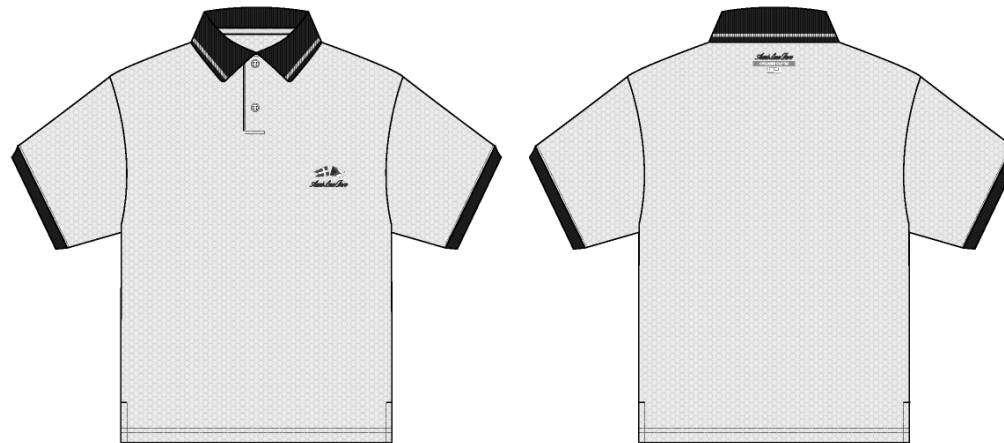


SS Racing Polo

Name	SS Racing Polo
Style No.	SS26CT112
Division	Mens
Category	Polos
Season	Spring/Summer
Year	2026
Size Scale	<div>M</div> -Sample size <div><div>XS</div><div>S</div><div>M</div><div>L</div><div>XL</div><div>XXL</div></div>
Style Status	Adopted
Factory	UN-AVAILABLE
Designer Name	Nils
TD Name	Anastasiya
Created by/Author	11/12/2025 Jeni Fitzgerald jeni.fitzgerald@aimeleondore.com



1_B+W-1

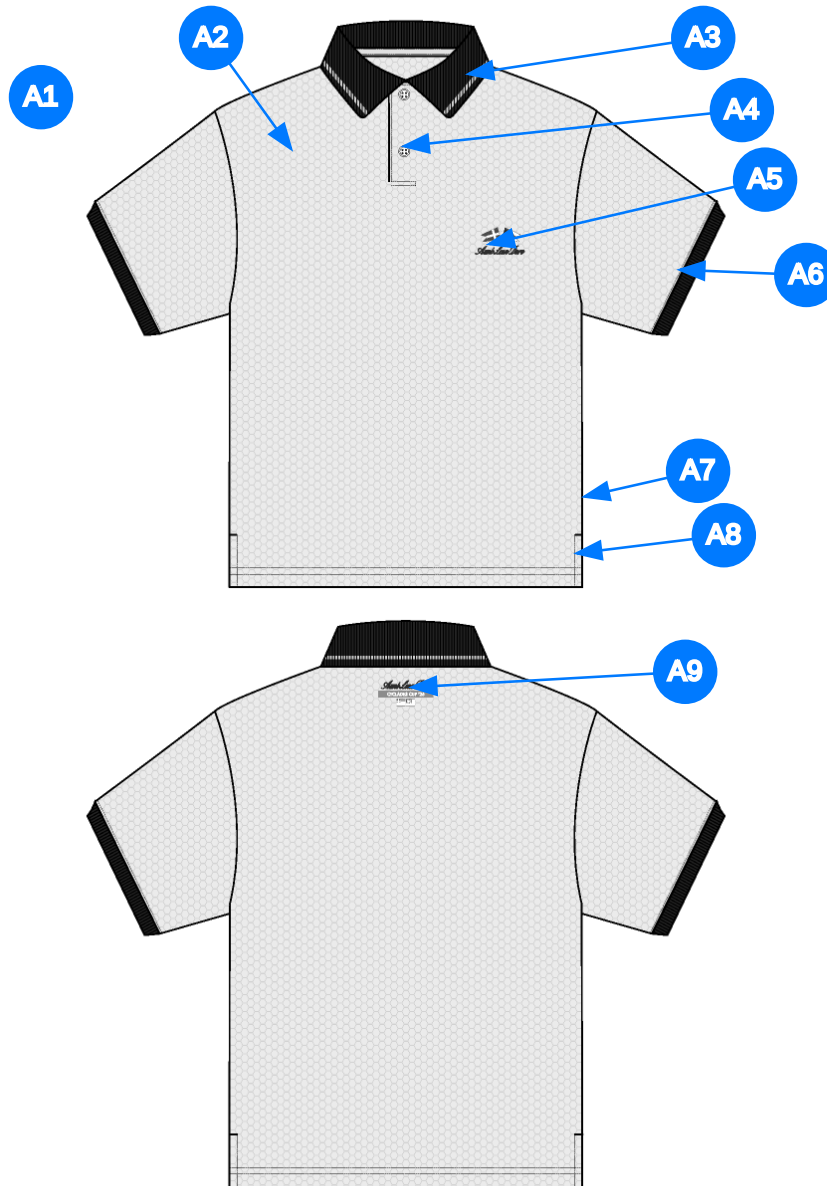


BODY: WISPY CLOUDS: 11-3900 TCX
COLLAR: MARITIME BLUE: 19-3831 TCX
RIBBING: MARITIME BLUE: 19-3831 TCX



BODY: MARITIME BLUE: 19-3831 TCX
COLLAR: MARITIME BLUE: 19-3831 TCX
RIBBING: MARITIME BLUE: 19-3831 TCX

2_CLR-1



3_CONSTRUCTION DETAILS-1

Comments (9)

- A1** FIT: SS Golf Polo SS26CT031
- A2** PRINTED ARTWORK @ BODY & SLEEVES - SEE SEPARATE FILE FOR ARTWORK DETAILS
- A3** FLAT KNIT RIB @ COLLAR - SAME QUALITY AS "SS GOLF POLO" - SEE FOLLOWING PAGES FOR ARTWORK DETAILS
- A4** - COTTON/POLY TAPE ALONG BACK NECK
- A5** GROWN ON PLACKET W/ BUTTON CLOSURE - 3X
- A6** BUTTONS TOTAL; 2 @ CF, 1. EXTRA - SIZE: 20L - BUTTONHOLE VERTICAL
- A7** ARTWORK @ WL CHEST - SEE SEPARATE FILE FOR ARTWORK DETAILS
- A8** 1X1 RIB @ SLEEVE CUFF - QUALITY SHOULD MATCH COLLAR
- A9** ALD LABEL @ SIDE SEAM
- A8** VENT @ SIDE SEAMS
- A9** EMBROIDERED ARTWORK @ CB NECK - SEE SEPARATE FILE FOR ARTWORK DETAILS

1. fit: tham khảo SS26CT031

2. in tại thân và tay

3. rib cổ giống chất lượng mã SS26CT031 - dây tape viền cổ sau

4. nút size 20L, 2 nút tại nếp giữa trước + 1 nút tại nhãn thành phần - thùy khuy dọc

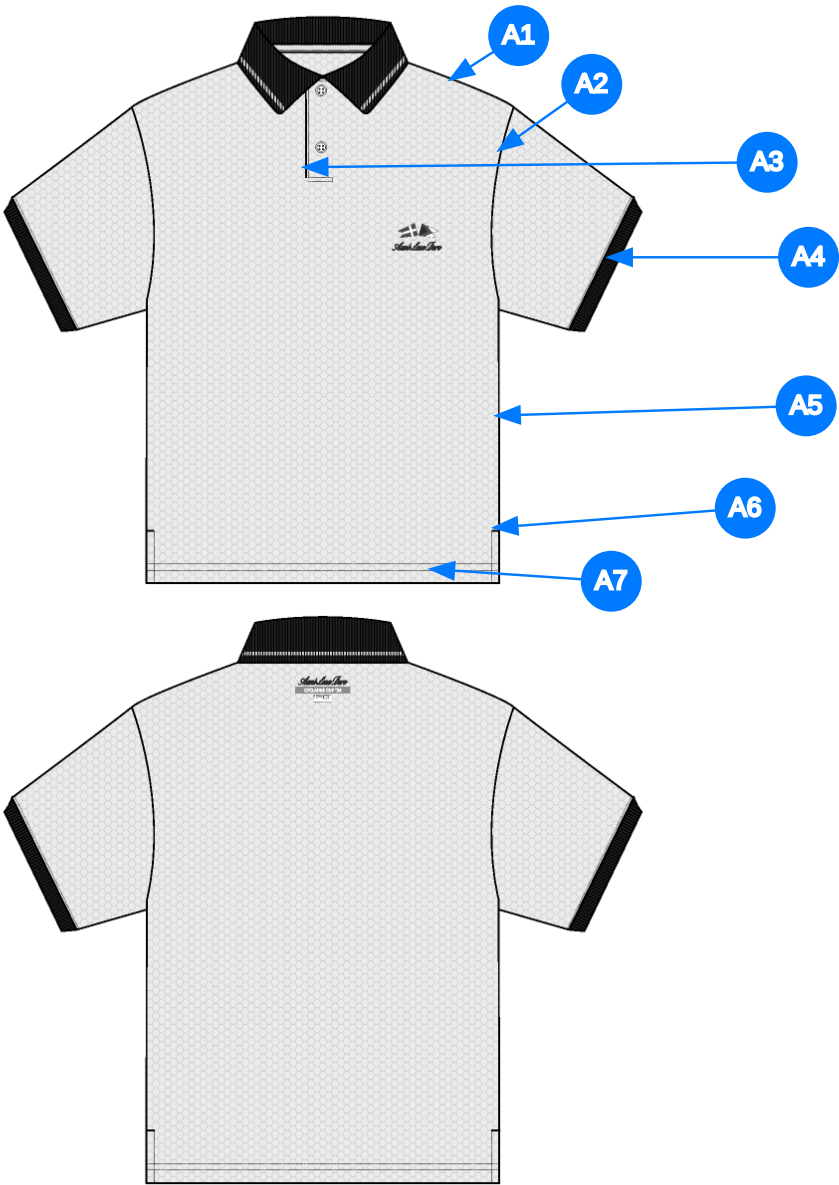
5. Artwork tại ngực trái

6. rib tại lai tay - giống chất lượng bo cổ

7. nhãn cờ tại sườn ngoài

8. xẻ lai

9. hình thêu tại cổ sau



4_STITCHING DETAILS-1

Comments (7)

- A1 STRADDLE STITCH @ SHOULDER
- A2 CLEAN SEAM FINISH @ ARMHOLE
- A3 1/8" SN TS @ PLACKET
- A4 1/8" SN TS @ SLEEVE CUFFS
- A5 CLEAN SEAM FINISH @ SIDE SEAMS
- A6 1/8" SN TS @ VENT - ADD BAR TACK @ TOP OF VENT
- A7 1/4" DN TS @ BOTTOM HEM - TURN BACK W/ COVERLOCK STITCH

- 1. điều rẽ tại vai
- 2. may sạch tại nách
- 3. điều 1 kim 1/8" tại nếp giữa trước
- 4. điều 1 kim 1/8" tại lai tay
- 5. may sạch tại đường may sườn
- 6. điều 1 kim 1/8" tại xẻ lai - thêm bộ tại đỉnh xẻ lai
- 7. điều 2 kim 1/4" tại lai áo

Sample Size: M

POINT OF MEASURE	CODE	HOW TO MEASURE	CRITICAL	TYPE	TOLERANCE	M
Front Body Length	S&K01	HPS to bottom edge	true	Full	1/4 in	28 1/2 in
Back Body Length	S&K02	CB neck seam to bottom edge	true	Full	1/4 in	28 in
Shoulder Seam Forward	S&K07	HPS to seam	false	Full	1/8 in	3/8 in
Shoulder Slope	S&K08	Shoulder point perpendicular to HPS	false	Full	1/4 in	2 in
Front Neck Drop	S&K04	HPS to neck seam	false	Full	1/8 in	3 1/2 in
Back Neck Drop	S&K05	HPS to neck seam	false	Full	1/8 in	1/2 in
Back Neck Width	S&K06	Seam to seam at back neck, at HPS point	false	Full	1/4 in	6 1/4 in
Across Shoulder	S&K09	Seam to seam	false	Half	1/4 in	17 3/4 in
Across Front/Across Back Position from HPS	eos7YR		true	Full	0 in	7 in
Across Front	S&K010	Down from HPS, Seam to seam	false	Half	1/4 in	16 in
Across Back	S&K011	Down from HPS, Seam to Seam	false	Half	1/4 in	16 3/4 in
Chest Width	S&K012	1" Below armhole- edge to edge	true	Half	1/4 in	21 1/2 in
Bottom Opening Width- At Edge	S&K013	At bottom edge	true	Half	1/4 in	21 1/2 in
Bottom Hem Height	S&K014	Bottom edge to stitch line or trim seam	false	Full	1/8 in	3/4 in
Sleeve Length from CB Neck	S&K032	3-point measure from CB Neck to shoulder point to sleeve edge	true	Full	1/2 in	18 3/4 in
Armhole Drop	S&K016	Below HPS - measure perpendicular	false	Full	1/4 in	11 1/2 in
Bicep Width	S&K017	1" below armhole- edge to edge	false	Half	1/4 in	8 in
Sleeve Opening Width- At Edge	S&K73	At edge	false	Half	1/4 in	6 1/4 in
Cuff Height	S&K36	Cuff edge to seam	false	Full	1/8 in	1/2 in
Collar Point Length	S&K024	Neck seam to collar point, along edge	false	Full	1/8 in	2 1/2 in
Collar Height at CB	S&K025	Neck seam to collar edge at CB	false	Full	1/8 in	3 in
Collar Length along the edge	S&K026	Collar point to collar point, along the edge	false	Full	3/8 in	16 1/2 in
CF Placket Length	S&K81	CF neck drop to bottom of placket	true	Full	1/8 in	5 in
CF Placket Width	S&K82	Width of placket edge to edge	false	Full	1/8 in	1 1/4 in
1st Button Below Neck Seam	S&K276	From top of placket edge to center of 1st Button	false	Full	1/8 in	3/8 in
2nd Button Placement from Placket Edge	tHPC04	To Placket edge to center of button	true	Full	0 in	2 in
Side Slit Height	S&K093	From bottom edge to top of slit	false	Full	1/8 in	1 1/2 in
WL Chest Logo Placement from HPS	S&K416		true	Full	1/8 in	8 in
WL Chest Logo Placement out from the CF Line	S&K022		false	Full	1/8 in	3 1/4 in
CB Artwork Placement below CB Neck Seam	S&K109	From CB neck seam to top Artwork	false	Full	1/8 in	1 in

Development Notes - Sarah Tota

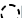

CREATED ON NOV 7, 2025 8:25 PM

SS26CT111 SS Racing Polo

Date: 11/7/24
Status: Request 1st Proto
TD: Sarah

Fit: SS26CT031

COMPONENT		QTY	1.  PROTO
FABRIC			
1	PIQUE MESH (AAG) CODE: MPTS006 Placement: BODY, SLEEVES Notes: FOLLOW ARTWORK FILE FOR AOP Supplier: Ming Sheng ZhiYuan Textile Co., LTD Width: 160cm Weight: 190g Country of Origin: CHINA		-  Undefined Price: 0.00
2	1-0408B44-S0074 CODE: UA FLAT KNIT RIB - COLLAR Placement: COLLAR Notes: FOLLOW ARTWORK FILE FOR STRIPE Supplier: UNAVAILABLE		-  Undefined Price: 0.00
3	1-0408B45-S0074 CODE: UA FLAT KNIT RIB - CUFFS Placement: CUFFS Supplier: UNAVAILABLE		-  Maritime Blue Custom Code: 19-3831 TCX Price: 0.00
4	2-24162A002-S0010 CODE: UA 3/8" Poly Neck Tape Placement: CB INTERIOR NECK Supplier: UNAVAILABLE Country of Origin: VIETNAM		-  Undefined Price: 0.00
5	Trocha Shell Full Logo'd 4H Button CODE: NT-12183b Placement: 2PC @ PLACKET + 1PC EXTRA AT CARE LABEL Supplier: Nice Trim		-  WHITE TROCHA SIZE: 20L Price: 0.00
6	ARTWORK CODE: AS CORRESPONDING FILE Placement: BODY, SLEEVES Notes: FOLLOW ARTWORK FILE AND POM Supplier: Factory Sourced		- ARTWORK Price: 0.00
7	ARTWORK CODE: AS CORRESPONDING FILE Placement: @ WL CHEST Notes: FOLLOW ARTWORK FILE AND POM Supplier: Factory Sourced		- ARTWORK Price: 0.00
8	ARTWORK CODE: AS CORRESPONDING FILE Placement: @ CB NECK Notes: FOLLOW ARTWORK FILE AND POM Supplier: Factory Sourced		- ARTWORK Price: 0.00
LABEL AND TRIM PACKAGE			
9	ALD Woven Loop Label CODE: ALD-ML02 Placement: WL SIDE SEAM Notes: FOLLOW POM Supplier: Colonial	1	-  Parmesan Base / Gold Text Price: 0.00
10	ALD Woven Main Label W/ Size CODE: ALD-ML03 Placement: INTERIOR CENTER BACK NECK Supplier: Colonial Country of Origin: CHINA	1 Piece	- ALD Woven Main Label W/ Size Price: 0.079
11	ALD Hangtag CODE: ALD-T06P Placement: WEARER'S LEFT ARMHOLE ABOVE SIDE SEAM Supplier: Colonial Country of Origin: CHINA	1 Piece	- ALD Hangtag Price: 0.22
12	ALD Branded Poly Bag - 12" X 15" (RECYLCED) CODE: ALD-PB01-R Supplier: Colonial Country of Origin: CHINA	1 Piece	- ALD Branded Poly bag - 12" x 15" (RECYLCED) Price: 0.21
13	ALD Woven Care + Content + COO Label CODE: ALD-COO-XXX Placement: INTERIOR WEARER'S LEFT SIDE SEAM, 5" ABOVE BODY HEM Supplier: Colonial Country of Origin: CHINA	1 Piece	- ALD Woven Care + Content + COO Label Price: 0.058

COMPONENT		QTY	1.  PROTO
14	UPC Sticker CODE:  UPC Placement: POLY BAG; BACK SIDE, UPPER RIGHT HAND CORNER Supplier: Factory Sourced	1	- UPC Sticker Price: 0.00
Components 14			Total 0.567