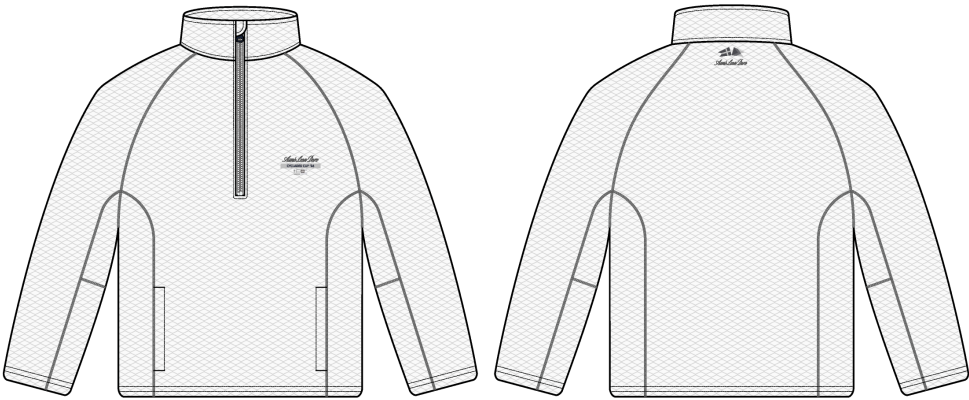


Racing Half Zip

Name	Racing Half Zip
Style No.	SS26CS022
Division	Mens
Category	Sweatshirts
Season	Spring/Summer
Year	2026
Size Scale	<div>M</div> -Sample size <div><div>XS</div><div>S</div><div>M</div><div>L</div><div>XL</div><div>XXL</div></div>
Style Status	Adopted
Factory	UN-AVAILABLE
Designer Name	Nils
TD Name	Anastasiya
Created by/Author	11/12/2025 Jeni Fitzgerald jeni.fitzgerald@aimeleondore.com

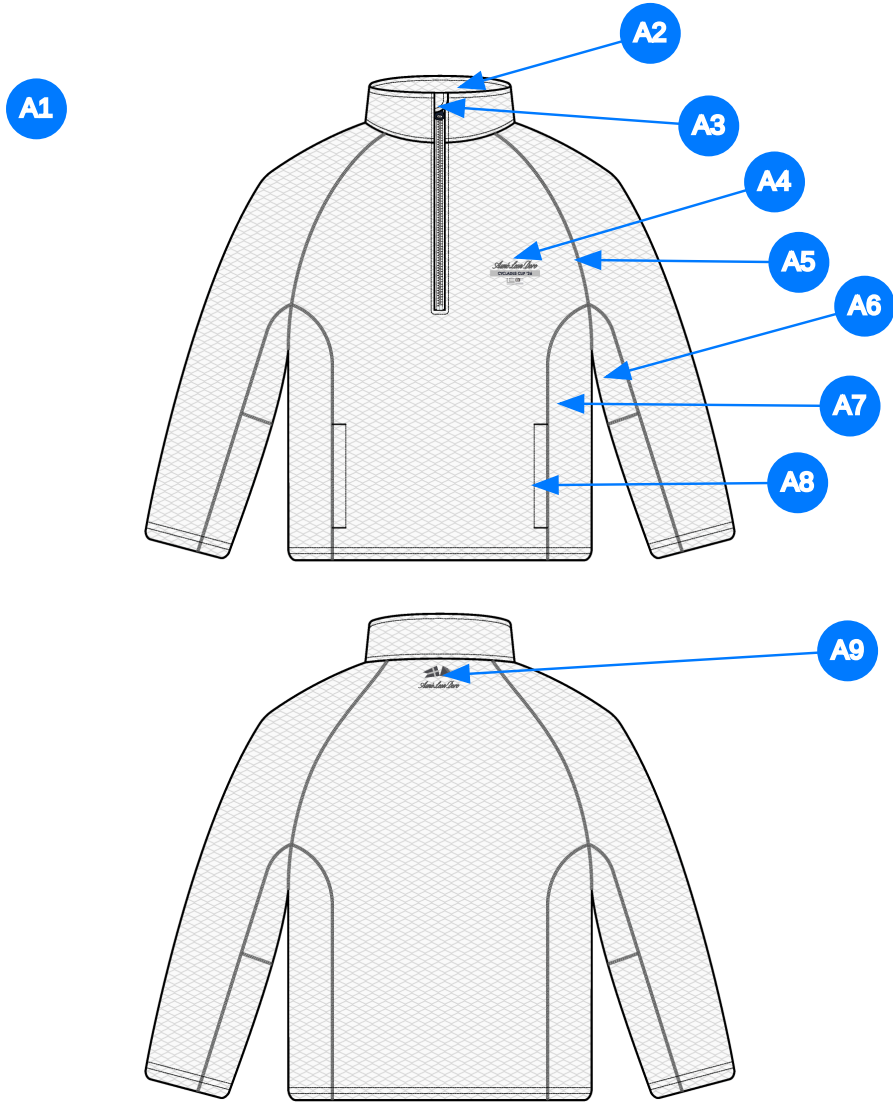


1_B+W-1



BODY: MARITIME BLUE: 19-3831 TCX
FLAT LOCK STITCH: AQUARIUS 16-4530 TCX

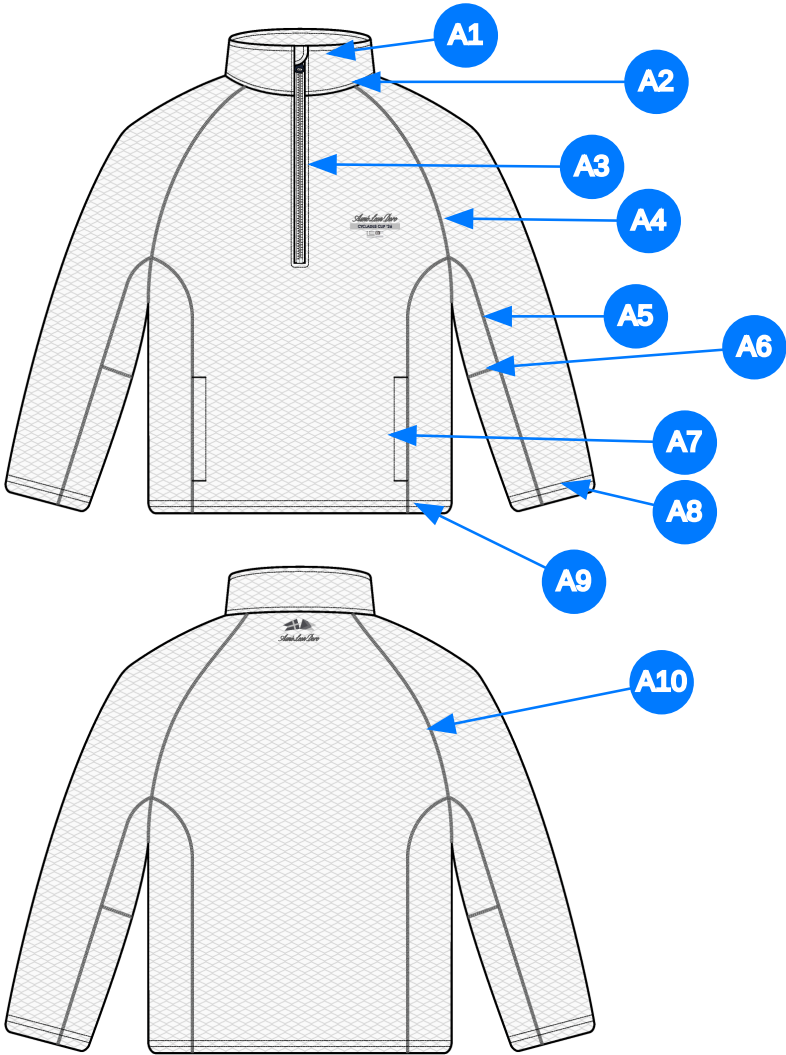
2_CLR-1



Comments (9)

- A1 FIT: FW25WJ082 NB 991 Fleece Half Zip Pullover
- A2 DOUBLE SELF COLLAR
- A3 ZIPPER @ CF W/ STORM GUARD @ WEARERS RIGHT SIDE - SELF FABRIC
- A4 EMBROIDERED ARTWORK @ WEARER'S LEFT OF CF ZIPPER
- A5 RAGLAN SLEEVE CONSTRUCTION
- A6 SLEEVE PANEL
- A7 SIDE PANEL
- A8 (PRINCESS) SEAM POCKETS - USE SELF FOR POCKET BAGS
- A9 EMBROIDERED ARTWORK @ CB NECK

3_CONSTRUCTION DETAILS-1



Comments (10)

- A1 1/4" SN TS @ TOP NECK
- A2 1/4" SN TS @ NECK
- A3 1/4" SN TS @ CF ZIPPER
- A4 COVERSTITCH @ RAGLAN SLEEVE
- A5 COVERSTITCH @ SLEEVE PANEL
- A6 COVERSTITCH @ SEAM SPLIT
- A7 1/4" SN TS @ SEAM POCKET - SEEM TACKS AT POCKET EDGE
- A8 1/4" DN TS @ SLEEVE HEM
- A9 1/4" DN TS @ HEM
- A10 COVERSTITCH @ RAGLAN SLEEVE

4_STITCHING DETAILS-1

BODY REFERENCE



BODY REFERENCE-1

COLLAR FACING + STORM GUARD REFERENCE



COLLAR + STORM GUARD REFERENCE-1

Sample Size: M

POINT OF MEASURE	CODE	HOW TO MEASURE	CRITICAL	TYPE	TOLERANCE	M
Front Body Length	S&K01	HPS to bottom edge	true	Full	1/4 in	27 in
Back Body Length	S&K02	CB neck seam to bottom edge	true	Full	1/4 in	26 1/2 in
CF Zipper Length	S&K03	From neck to bottom edge	false	Full	1/4 in	11 in
WR CF Storm guard width	4oO4wy		false	Full	1/8 in	1 1/4 in
Front Neck Drop	S&K04	HPS to neck seam	false	Full	1/8 in	4 in
Back Neck Drop	S&K05	HPS to neck seam	false	Full	1/8 in	1/2 in
Back Neck Width	S&K06	Seam to seam at back neck, at HPS point	false	Full	1/4 in	7 1/2 in
Front Raglan Seam Placement at Neck	S&K038	HPS to raglan seam straight down	false	Full	1/8 in	1 3/4 in
Back Raglan Seam Placement at Neck	S&K039	HPS to raglan seam straight down	false	Full	1/8 in	1 3/4 in
Shoulder Slope	S&K08	Shoulder point perpendicular to HPS	false	Full	1/4 in	2 1/2 in
Across Front/Across Back Position from HPS	eos7YR		true	Full	0 in	7 in
Across Front	S&K010	Down from HPS, Seam to seam	false	Half	1/4 in	16 1/2 in
Across Back	S&K011	Down from HPS, Seam to Seam	false	Half	1/4 in	17 in
Chest Width	S&K012	1" Below armhole- edge to edge	true	Half	1/4 in	22 3/4 in
Bottom Opening Width- At Edge	S&K013	At bottom edge	true	Half	1/4 in	21 3/4 in
Collar Height at CF	S&K025	Neck seam to collar edge at CB	false	Full	1/8 in	3 in
Armhole Drop	S&K016	Below HPS - measure perpendicular	false	Full	1/4 in	11 3/4 in
Sleeve Length from CB Neck	S&K032	3-point measure from CB Neck to shoulder point to sleeve edge	true	Full	1/2 in	34 in
Bicep Width	S&K017	1" below armhole- edge to edge	false	Half	1/4 in	8 1/4 in
Forearm Width	S&K350	9" up from sleeve edge	false	Full	1/4 in	6 1/2 in
Sleeve Opening Width- At Edge	S&K73	At edge	false	Half	1/4 in	4 3/4 in
Sleeve Turnback Height	S&K36	Cuff edge to seam	false	Full	1/8 in	3/4 in
Collar Height at CB	S&K025	Neck seam to collar edge at CB	false	Full	1/8 in	2 7/8 in
Collar Length Along Edge	S&K228	Along collar edge from point to point	false	Full	1/8 in	17 5/8 in
Bottom Hem Height	S&K83	Bottom edge to top of trim	false	Full	1/8 in	3/4 in
side onseam pocket position above bottom hem	924nWF		false	Full	1/8 in	3 1/2 in
Side Onseam Pocket Zipper Length	uT9IoR		false	Full	0 in	7 in
Side Panel Width, Total	ErgmQe		false	Full	1/4 in	6 3/4 in
Sleeve inseam panel width at sleeve opening, total	RclZFk		false	Full	1/8 in	4 in
Sleeve horizontal cut seam from sleeve hem	n9IQbw		false	Full	1/4 in	12 in
side onseam pocket welt width	1cDLKL		false	Full	1/16 in	5/8 in
WL Chest Artwork Placement from HPS to Top Edge	S&K103		true	Full	1/8 in	7 1/2 in
WL Chest Artwork Placement Out from CF Line	S&K252		false	Full	1/8 in	2 1/2 in

Development Notes - Sarah Tota

CREATED ON NOV 7, 2025 9:59 PM

SS26CS022 Racing Half Zip

Date: 11/12/24

Status: Requesting 1st proto

TD: Sarah

Fit: Follow reference of FW25WJ082 sent with the following revisions:

- 1. Add contrast flatlock to seams
- 2. Follow attached photo of reference for fit intent and construction



Screenshot 2025-11-07 at 4.59.17 PM.jpg

COMPONENT		QTY	1. PROTO
FABRIC			
1	DIAMOND JACQUARD (AAG) CODE: HX32008 / UC0AI / WNS127 Placement: BODY, SLEEVES, SLEEVE PANELS, SIDE PANELS, DOUBLED AT NECK TRIM, ZIPPER END GARAGE, STORM GUARD, POCKET BAGS Supplier: GuangDong Golden Horizon Industry Co.,Ltd Width: 150 Weight: 270gsm Country of Origin: CHINA		- Undefined Price: 0.00
2	EBN244 CODE: AAG Poly Binding Placement: CF ZIPPER TAPE Notes: POLY BINDING Supplier: Active Apparel Group		- Undefined Price: 0.00
3	YKK COIL CLOSED END ZIPPER CODE: TBD Placement: CF NECK, SIDE SEAM POCKETS Supplier: YKK		- YKK COIL CLOSED END ZIPPER SIZE: 5GG Price: 0.00
4	YKK Zipper Tape CODE: YKK Placement: CF NECK, SIDE SEAM POCKETS		- Undefined Price: 0.00
5	YKK Branded Zipper Slider CODE: DA8AED01 Placement: CF NECK, SIDE SEAM POCKETS Supplier: YKK Country of Origin: CHINA		- MATTE ENAMEL Custom Code: EF Price: 0.00
6	ARTWORK CODE: AS CORRESPONDING FILE Placement: WL CHEST Notes: FOLLOW ARTWORK FILE AND POM Supplier: Factory Sourced		- ARTWORK Price: 0.00
7	ARTWORK CODE: AS CORRESPONDING FILE Placement: CB NECK Notes: FOLLOW ARTWORK FILE AND POM Supplier: Factory Sourced		- ARTWORK Price: 0.00
LABEL AND TRIM PACKAGE			
8	ALD Woven Main Label W/ Size CODE: ALD-ML03 Placement: INTERIOR CENTER BACK NECK Supplier: Colonial Country of Origin: CHINA	1 Piece	- ALD Woven Main Label W/ Size Price: 0.079
9	ALD Hangtag CODE: ALD-T06P Placement: WEARER'S LEFT ARMHOLE ABOVE SIDE SEAM Supplier: Colonial Country of Origin: CHINA	1 Piece	- ALD Hangtag Price: 0.22
10	ALD Branded Poly Bag - 15" X 18" (RECYCLED) CODE: ALD-PB02-R Supplier: Colonial Country of Origin: CHINA	1 Piece	- ALD Branded Poly bag - 15" x 18" (RECYCLED) Price: 0.29
11	ALD Woven Care + Content + COO Label CODE: ALD-COO-XXX Placement: INTERIOR WEARER'S LEFT SIDE SEAM, 5" ABOVE BODY HEM Supplier: Colonial Country of Origin: CHINA	1 Piece	- ALD Woven Care + Content + COO Label Price: 0.058
12	UPC Sticker CODE: UPC Placement: POLY BAG; BACK SIDE, UPPER RIGHT HAND CORNER Supplier: Factory Sourced	1	- UPC Sticker Price: 0.00
Components 12			Total 0.647