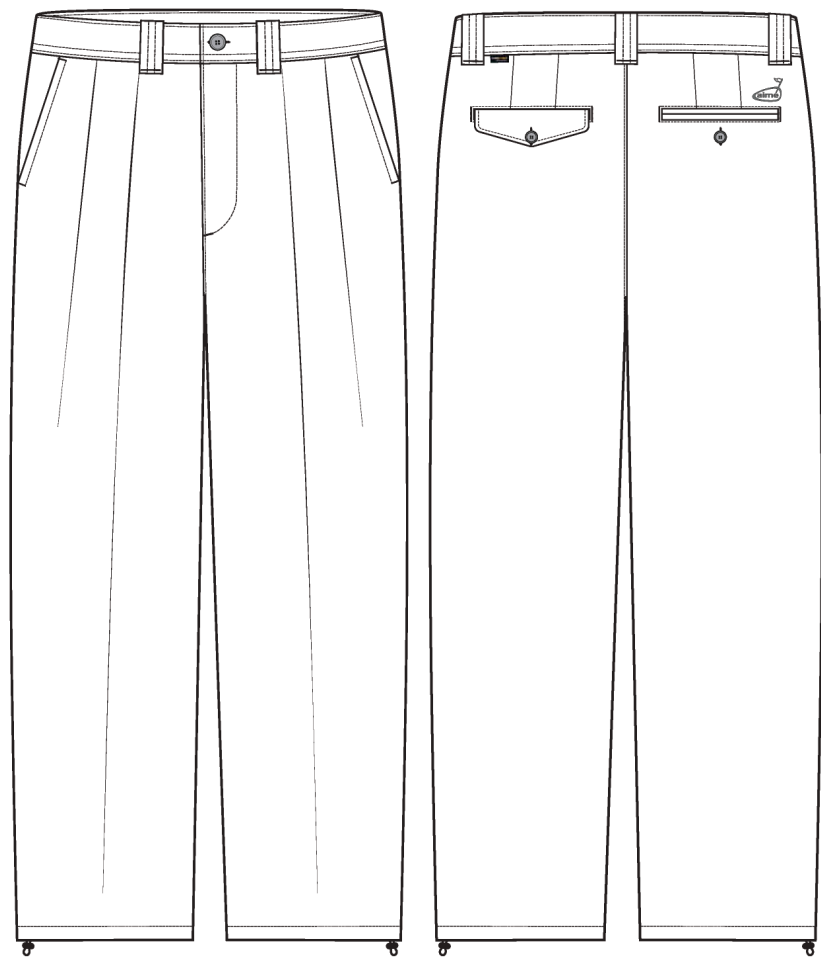


Golf Cordura Double Pleated Pant

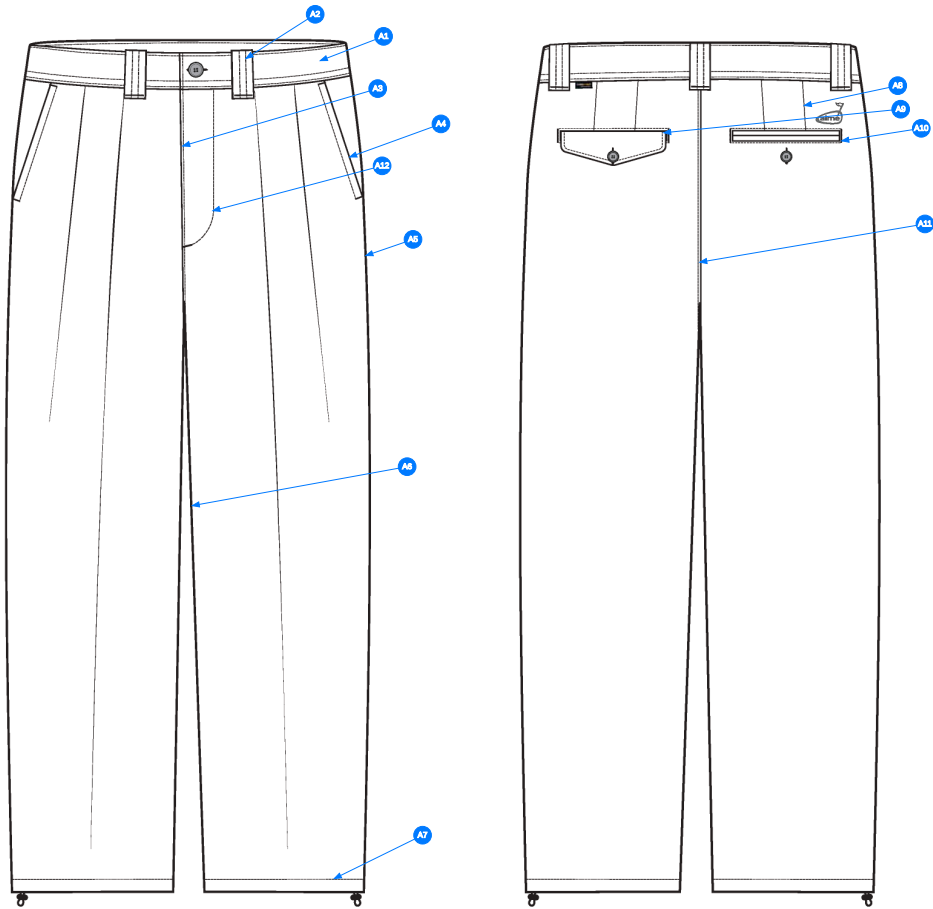
Name	Golf Cordura Double Pleated Pant
Style No.	SS26WP024
Division	Mens
Category	Pants
Season	Spring/Summer
Year	2026
Size Scale	<div><div>32</div>-Sample size<div><div>28</div><div>30</div><div>32</div><div>34</div><div>36</div><div>38</div></div></div>
Style Status	Development
Designer Name	Quinton
Created by/Author	4/18/2025 Cristina Loukopoulos cristina@aimeleondore.com



01_BLACK AND WHITE SKETCH-1



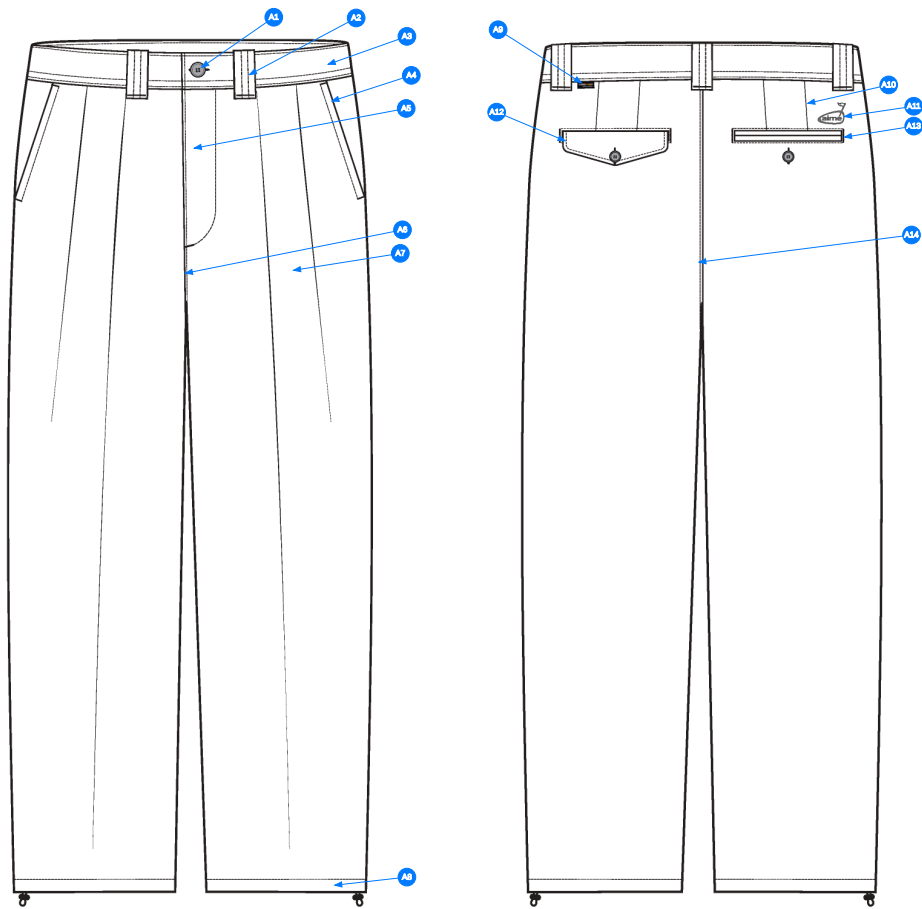
02_COLOR-1



Comments (12)

- A1 EDGESTITCH @ TOP OF WB AND 1/4" DN TS @ BOTTOM OF WB
- A2 1/4" DN TS @ CENTER OF BELT LOOPS WITH BARTACK REINFORCEMENT
- A3 EDGESTITCH @ CF
- A4 3/8" SN TS @ HAND POCKETS WITH BARTACK REINFORCEMENTS
- A5 CLEAN FINISH @ OUTSEAM
- A6 EDGESTITCH @ INSEAM
- A7 3/4" SN TS @ HEM
- A8 CLEAN FINISH @ BACK DARTS
- A9 EDGESTITCH @ WL BACK WELT POCKET AND 1/8" SN TS @ POCKET FLAP - BARTACK REINFORCEMENTS AT SIDES OF WELT
- A10 EDGESTITCH @ WR BACK WELT POCKET - BARTACK REINFORCEMENTS AT SIDES OF WELT
- A11 EDGESTITCH @ CB
- A12 SN TS @ J-STITCH w/ BARTACK REINFORCEMENT

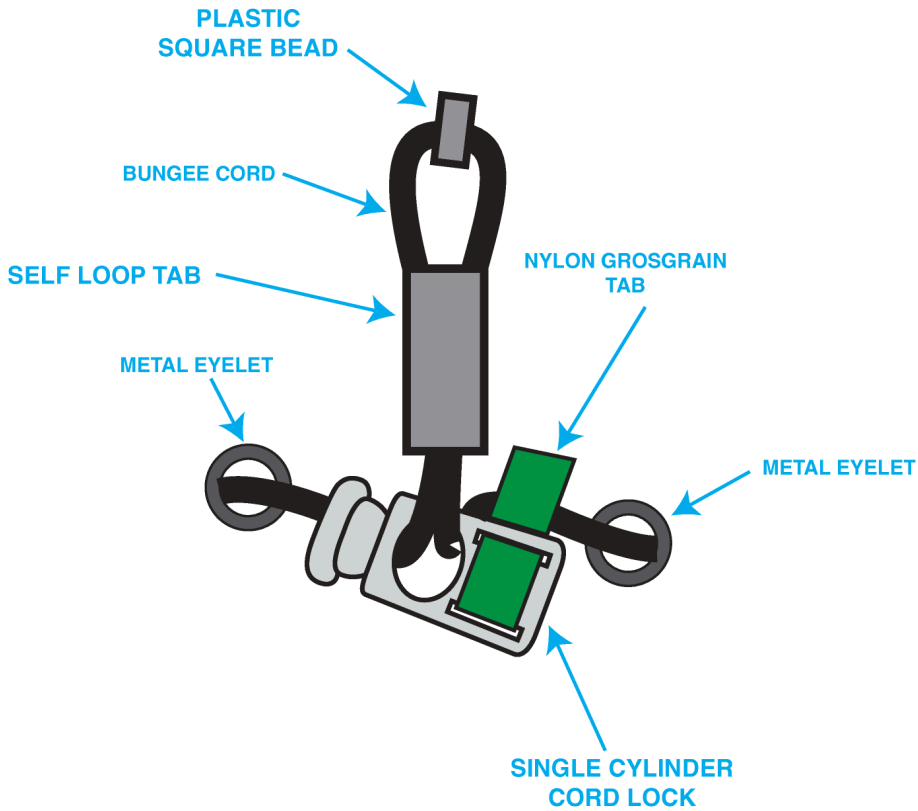
04_STITCH DETAIL-1



Comments (14)

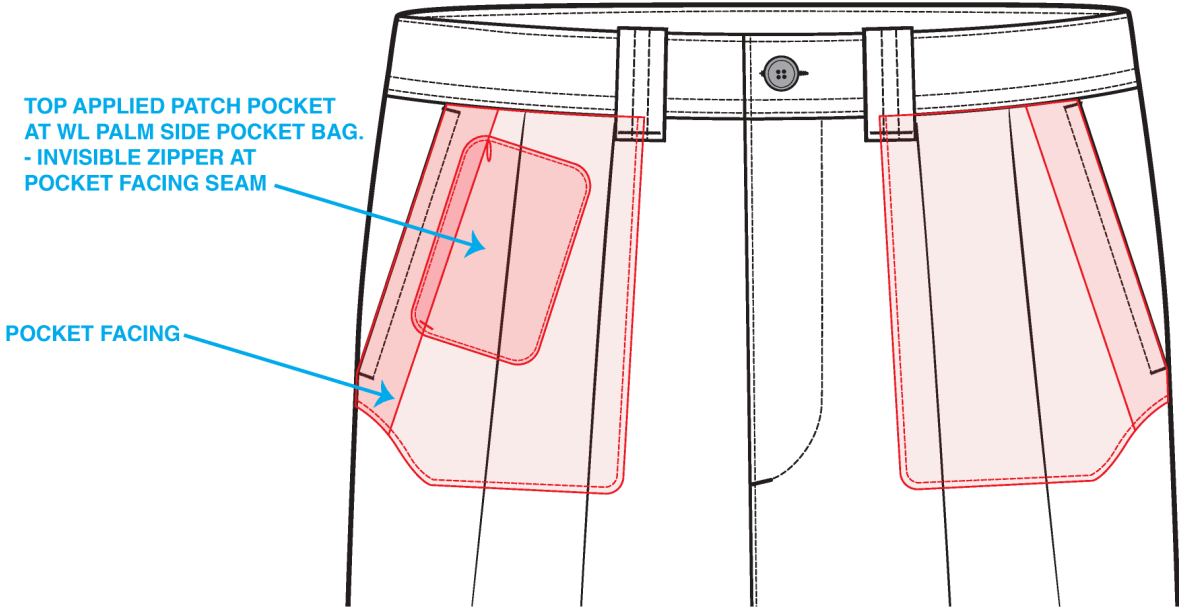
- A1 BUTTON CLOSURE @ CF WAISTBAND
- A2 5 BELTS LOOPS @ WB
- A3 FIXED WAISTBAND CONSTRUCTION WITH FUSIBLE
- A4 SLASH HAND POCKETS
- A5 FUNCTIONAL ZIPPER FLY CONSTRUCTION
- A6 CF RISE
- A7 DOUBLE PLEAT CONSTRUCTION @ FRONT LEGS
- A8 BUNGEE AND CORD-LOCK CONSTRUCTION @ BOTH HEMS
- A9 CORDURA WOVEN LOOP LABEL @ WL BACK WAISTBAND
- A10 DOUBLE DART CONSTRUCTION @ BACK WAIST
- A11 TBD DIRECT EMBROIDERED ARTWORK @ WR BACK
- A12 DOUBLE WELT POCKET WITH POCKET FLAP AND BUTTON CLOSURE @ WL BACK
- A13 DOUBLE WELT POCKET WITH BUTTON CLOSURE @ WR BACK
- A14 CB RISE

05_CONSTRUCTION DETAIL-1



06_BUNGEE CONSTRUCTION-1

FRONT POCKET DETAIL VIEW



07_DETAIL-1

Sample Size: 32

POINT OF MEASURE	CODE	HOW TO MEASURE	CRITICAL	TYPE	TOLERANCE	32
WAISTBAND HEIGHT	WV101		true	Full	1/8 in	1 1/2 in
WAIST CIRCUMFERENCE AT TOP EDGE	DQSI32		true	Full	1/2 in	33 1/2 in
FRONT RISE FROM CROTCH SM TO TOP EDGE	WV105	FROM FRONT CROTCH SEAM TO TOP EDGE OF FRONT WAISTBAND	true	Full	1/4 in	13 in
BACK RISE FROM CROTCH SM TO TOP EDGE	WV106	FROM BACK CROTCH SEAM TO TOP EDGE OF BACK WAISTBAND	true	Full	1/4 in	17 3/4 in
LOW HIP POSITION BELOW WB TOP EDGE	WV107	MEAS. X" DOWN FROM TOP EDGE OF WAISTBAND	true	Full	0 in	8 in
LOW HIP CIRCUMFERENCE	WV	3PT MEAS. - FROM WR SIDE SEAM, CF, TO WL SIDE SEAM	true	Full	1/2 in	45 1/4 in
THIGH CIRC. AT 1" BELOW CROTCH SM	WV109	MEAS. AT 1" BELOW CROTCH, ACROSS TO SIDE SEAM	true	Full	3/8 in	29 in
KNEE CIRC. AT 12" BELOW CROTCH SM	WV110	MEAS. AT 12" BELOW CROTCH, ACROSS TO SIDE SEAM	true	Full	1/4 in	23 3/4 in
LEG OPENING CIRC. AT BOTTOM EDGE	WV111	MEASURE AT LEG EDGE	true	Full	1/4 in	20 1/2 in
INSEAM LENGTH	WV112	MEAS. ALONG THE INSEAM FROM CF CROTCH SEAM TO LEG EDGE	true	Full	1/2 in	30 in
"J" STITCH LENGTH AT CF	WV		false	Full	1/4 in	6 3/4 in
"J" STITCH WIDTH	WV		false	Full	1/8 in	1 3/8 in
CF ZIPPER LENGTH	WV003	FROM ZIPPER TIP TO TIP	false	Full	1/4 in	6 1/4 in
BELT LOOP LENGTH	WV118		false	Full	1/8 in	2 1/8 in
BELT LOOP WIDTH	WV117		false	Full	1/8 in	3/4 in
FRONT POCKET OPENING FROM SIDE SEAM ALONG WAIST SEAM	WV		false	Full	1/8 in	1 1/4 in
FRONT POCKET OPENING LENGTH	WV	MEAS. ALONG SIDE SEAM FROM WAISTBAND SEAM	false	Full	1/4 in	6 1/2 in
FRONT POCKET BAG LENGTH	WV121	MEAS. FROM SEAM TO POCKET BAG EDGE – FACTORY GRADE FOR PRODUCTION	false	Full	1/4 in	11 3/4 in
FRONT POCKET BAG WIDTH	WV122	MEASURE FROM SEAM TO WIDEST EDGE – FACTORY GRADE FOR PRODUCTION	false	Full	1/4 in	6 1/2 in
BACK POCKET PLACEMENT FROM WAISTBAND SEAM	xB0dxi		false	Full	1/8 in	2 1/4 in
BACK POCKET PLACEMENT FROM CB	WV		false	Full	1/8 in	2 1/2 in
BACK POCKET WELT HEIGHT, TOTAL	OcRc2V		false	Full	1/8 in	1/2 in
BACK WELT POCKET OPENING LENGTH	WV127		false	Full	1/8 in	5 1/2 in
BACK POCKET BAG LENGTH	WV	FROM SEAM TO EDGE	false	Full	1/4 in	9 1/2 in
BACK POCKET FLAP WIDTH AT TOP	WV		false	Full	1/4 in	5 1/2 in
BACK POCKET FLAP HEIGHT AT CENTER	WV	MEASURE AT CENTER FROM WELT SEAM	false	Full	1/8 in	2 1/4 in
BACK POCKET FLAP HEIGHT AT SIDES	WV		false	Full	1/8 in	1 1/2 in
1ST PLEAT POSITION FROM TRUE CF	WV	FACTORY GRADE FOR PRODUCTION	false	Full	1/4 in	4 1/4 in
1ST PLEAT DEPTH	WV		false	Half	1/8 in	1 in
2ND PLEAT DEPTH	WV		false	Half	1/8 in	3/4 in
PLEAT SPACING	WV	FACTORY GRADE FOR PRODUCTION	false	Full	1/8 in	1 5/8 in

Development - 1st Proto Request - Kilsy Morocho

CREATED ON APR 14, 2025 5:11 PM

Status: Submit 1st Proto

Development Notes:

- 1. Create a pattern using the measurements and sketch provided.

INTERNAL NOTES

- 1. *Overall fit base: FW25 Officer Pant with double pleats and new design details.*

Golf Cordura Double Pleated Pant - Style #SS26WP024

Mens, Pants, Spring/Summer, 2026

BOM > Set 1 of 1

04-18-2025

COMPONENT		QTY	1. NO COLOR ASSIGNED
1	1044110 CODE: 1044110 Placement: BODY / POCKET BAGS / TAB INTERIOR BUNGEE Supplier: Takisada Width: 142CM Weight: 162GSM Country of Origin: JAPAN		Not used
2	IN DEV CODE: TBD Placement: WB FACING Notes: MESH 100% POLYESTER QUALITY, AROUND 60 GSM IN WEIGHT, PLEASE SEND OPTIONS FOR APPROVAL		Not used
3	ALD Faux Horn Button - Edge – COLORED CODE: IT11459 Placement: 1 @ CF / 1 SPARE @ COO LABEL Supplier: ITS Country of Origin: CHINA		Not used SIZE: 28L
4	ALD Faux Horn Button - Face – COLORED CODE: IT11458 Placement: 1 @ EACH BACK POCKET / 1 SPARE @ COO LABEL Supplier: ITS Country of Origin: CHINA		Not used SIZE: Undefined
5	YKK COIL CLOSED END ZIPPER CODE: TBD Placement: CF Supplier: YKK Country of Origin: China		Not used SIZE: 5GG
6	YKK Zipper Tape CODE: YKK Placement: CF ZIPPER		Not used
7	YKK DS6 Zipper Slider CODE: DS6 Placement: CF ZIPPER Supplier: YKK		Not used
8	IN DEV CODE: TBD Placement: @ EACH INTERIOR LEG HEM Notes: TBD 2.5MM ELASTIC BUNGEE; PLEASE SEND LOCAL OPTIONS FOR APPROVAL		Not used
9	IN DEV CODE: TBD Placement: 1 @ EACH BUNGEE END Notes: TBD CYLINDER CORD LOCK; PLEASE FOLLOW REF PHOTO AND SEND LOCAL OPTIONS FOR APPROVAL		Not used
10	IN DEV CODE: TBD Placement: 1 @ EACH BUNGEE END Notes: TBD PLASTIC SQUARE BEAD; PLEASE FOLLOW REF PHOTO AND SEND LOCAL OPTIONS FOR APPROVAL		Not used
11	IN DEV CODE: TBD Placement: @ CYLINDER CORD LOCK Notes: TBD 1/4" NYLON GROSGRAIN; SEND LOCAL OPTIONS FOR APPROVAL		Not used
12	IN DEV CODE: TBD Placement: 1 @ EACH BUNGEE EXIT Notes: TBD 14L METAL EYELET; PLS SEND LOCAL OPTIONS FOR APPROVAL		Not used
13	THREAD CODE: THREAD Placement: @ ENTIRE BODY Notes: 100% POLY THREAD; TEX SIZE: T-40 SPI: 8-10 Supplier: Factory Sourced		Not used
Components 13			Total 0.00