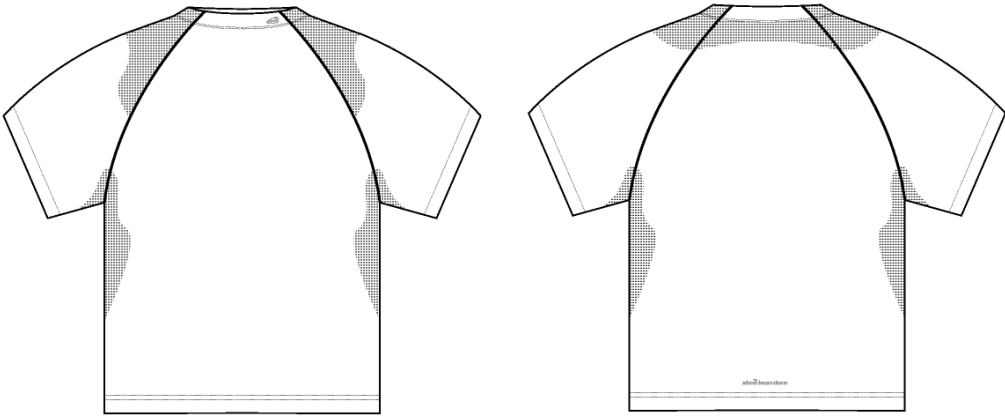
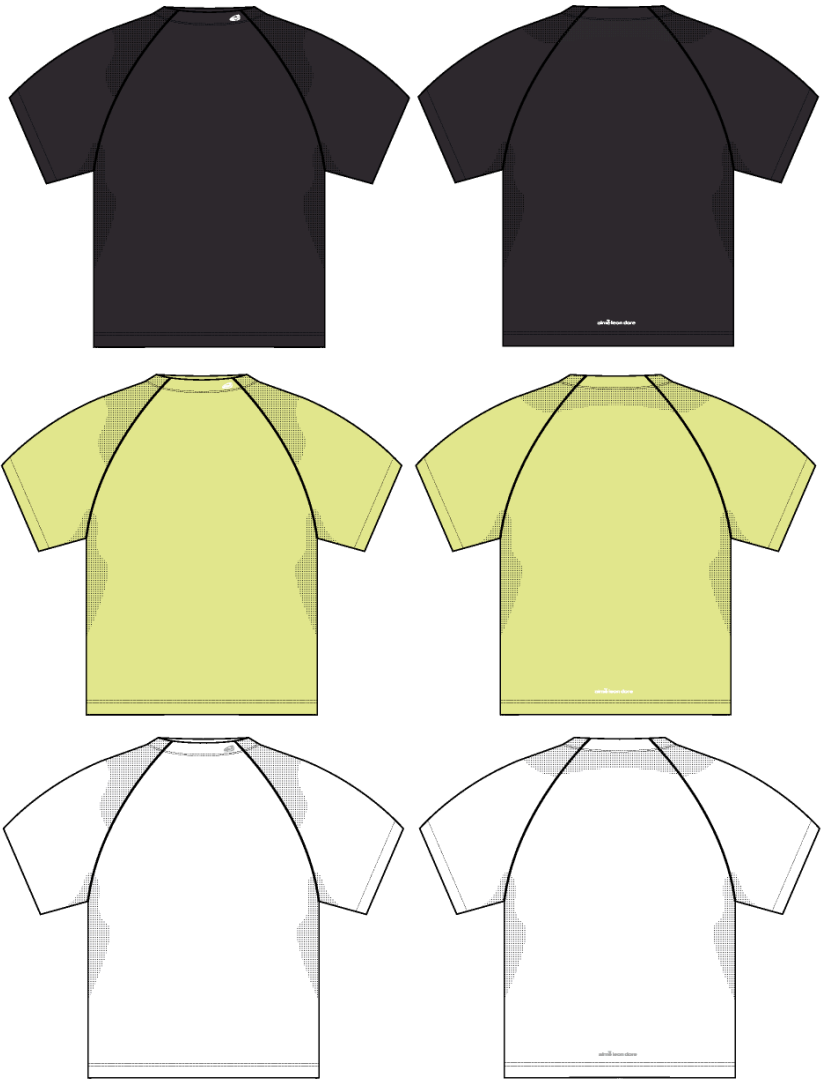


SS Golf Performance Tee

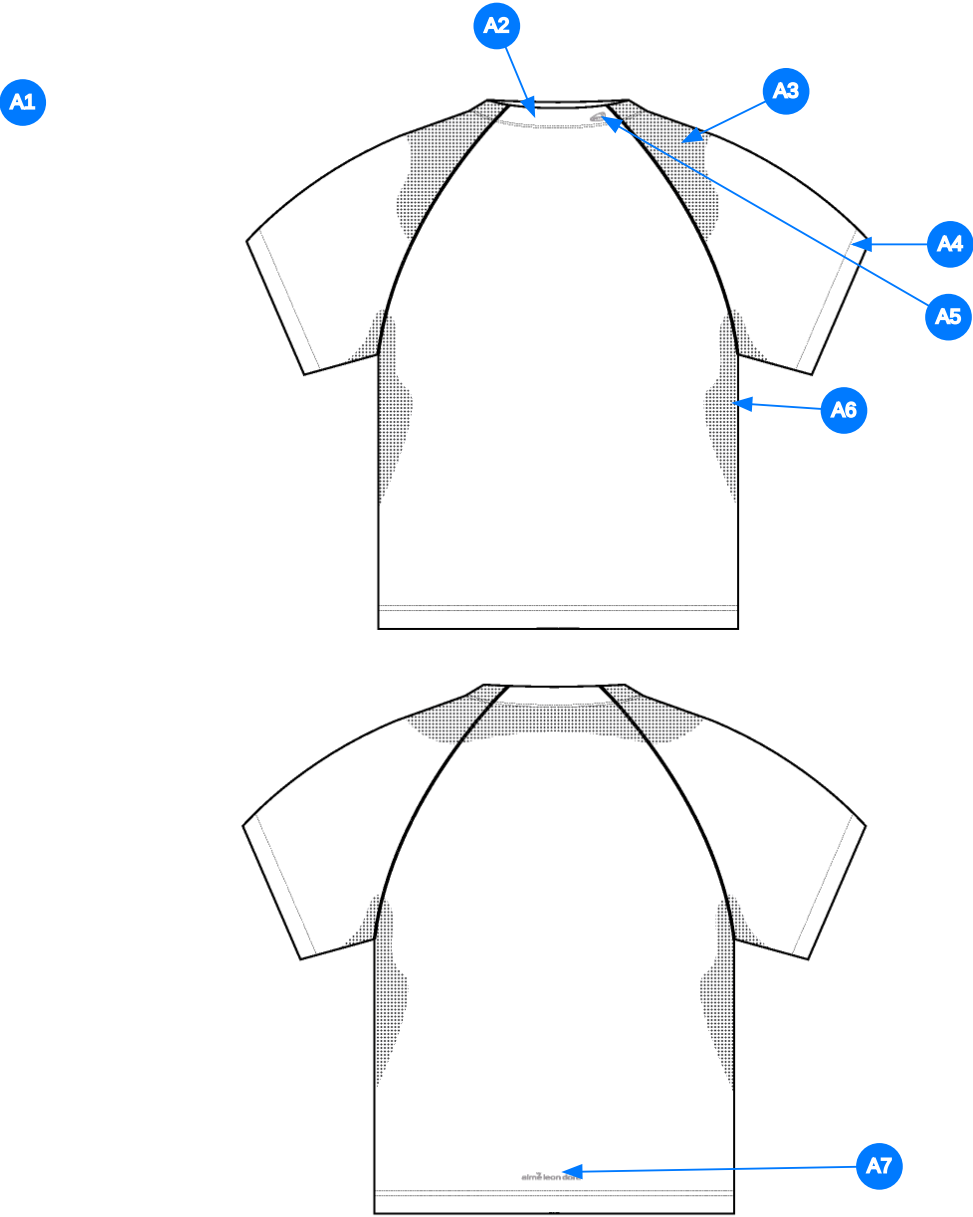
Name	SS Golf Performance Tee
Style No.	SS26CT033
Division	Mens
Category	Tees
Season	Spring/Summer
Year	2026
Size Scale	<div>M</div> -Sample size <div><div>XS</div><div>S</div><div>M</div><div>L</div><div>XL</div><div>XXL</div></div>
Style Status	Adopted
Factory	UN-AVAILABLE
Drop	Golf
Designer Name	Wes
TD Name	Anastasiya
Created by/Author	9/5/2025 Anastasiya Zolotova anastasiya.zolotova@aimeleondore.com



1_B&W-1



2_CLR-1

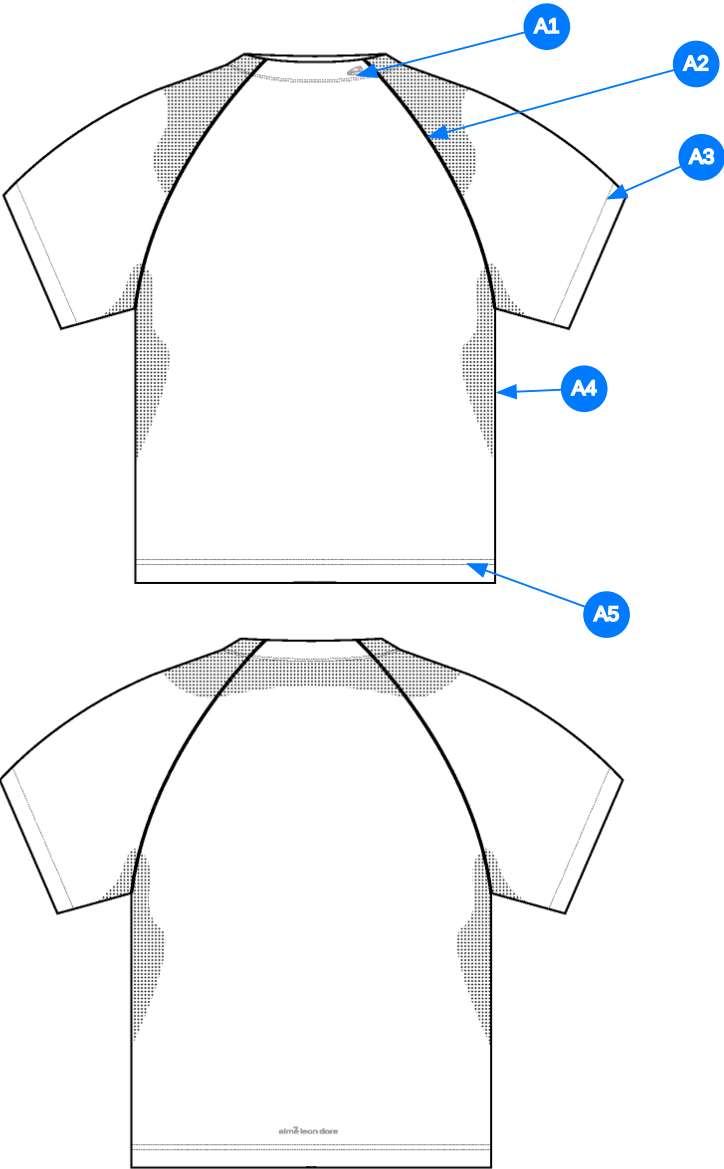


Comments (7)

- A1 FIT: SS25CT041
- A2 SELF FABRIC COLLAR @ NECK TRIM - POLY TAPE ALONG NECK
- A3 LASERCUT PERFORATION @ SLEEVE - SEE FOLLOWING PAGE FOR EXECUTION REFERENCE
- A4 SELF FABRIC @ SLEEVE CUFF
- A5 ARTWORK @ NECK - SEEE SEPARATE FILE FOR ARTWORK DETAILS.
- A6 LASERCUT PERFORATION @ SIDE SEAM
- A7 ARTWORK @ BACK BODY -SEE SEPARATE FILE FOR ARTWORK DETAILS.

- 1. fit: SS25CT041
- 2. cổ bằng vải chính - dây tape viền cổ sau
- 3. laser cut tại tay
- 4. vải chính tại lai tay
- 5. hình in tại cổ trước
- 6. laser cut tại sườn
- 7. hình in thân sau

3_Construction Details-1



Comments (5)

- A1 CLEAN FINISH @ NECK (SNES AT NECK INTERIOR)
BONDED SEAMS THROUGHOUT
- A2 BONDED SEAMS @ FRONT + BACK RAGLAN SEAM
- A3 1/4" DN TS @ SLEEVE CUFF
- A4 CLEAN SEAM FINISH @ SIDE SEAM
- A5 1/4" DN TS @ BOTTOM HEM

- 1. điều 2 kim 1/4" tại cổ
- 2. vắt sổ tại đường may raglan
- 3. điều 2 kim 1/4" tại lai tay
- 4. may sạch tại đường may sườn
- 5. điều 2 kim 1/4" tại lai áo

4_Stitching Details-1

Measured Size: M

POINT OF MEASURE	HOW TO MEASURE	CRITICAL	TYPE	TOLERANCE	EXPECTED	1ST PROTO - RCVD	VARIANCE	ADJUST BY +/-	REVISED SPEC	MEASUREMENT NOTES
Front Body Length	HPS to bottom edge	true	Full	1/2 in	27 in	27 1/4 in	1/4 in	0 in	27 in	
Back Body Length	CB neck seam to bottom edge	true	Full	1/2 in	26 1/4 in	26 1/4 in	0 in	0 in	26 1/4 in	
Front Neck Drop	HPS to neck seam	false	Full	1/8 in	3 1/4 in	3 3/8 in	1/8 in	0 in	3 1/4 in	
Back Neck Drop	HPS to neck seam	false	Full	1/8 in	3/4 in	3/4 in	0 in	0 in	3/4 in	
Back Neck Width	Seam to seam at back neck, at HPS point	false	Full	1/4 in	7 1/2 in	8 in	1/2 in	1/4 in	7 3/4 in	Follow Revised
Neck Trim Height	Neck Seam to trim edge (before folded)	false	Full	1/8 in	1 3/8 in	1 1/4 in	-1/8 in	0 in	1 3/8 in	
Collar Width at Top Edge		false	Full	1/8 in	7 3/4 in	8 in	1/4 in	0 in	7 3/4 in	Back to Spec
Front Raglan Seam Placement at Neck	HPS to raglan seam along the neckline	false	Full	1/8 in	2 3/8 in	2 3/4 in	3/8 in	3/8 in	2 3/4 in	Keep As Sample
Back Raglan Seam Placement at Neck	HPS to raglan seam along neckline	false	Full	1/8 in	1 1/2 in	2 1/4 in	3/4 in	3/4 in	2 1/4 in	Keep As Sample
Raglan Shoulder Slope	9 1/2" From CB	false	Full	1/4 in	2 in	0 in	0 in	0 in	2 in	
Across Front/Across Back Position from HPS		true	Full	0 in	7 in	7 in	0 in	0 in	7 in	
Across Front	Down from HPS, Seam to seam	false	Half	3/8 in	13 1/4 in	13 3/4 in	1/2 in	1/2 in	13 3/4 in	Keep As Sample
Across Back	Down from HPS, Seam to Seam	false	Half	3/8 in	14 in	13 3/4 in	-1/4 in	0 in	14 in	
Chest Width	1" Below armhole- edge to edge	true	Half	1/2 in	20 1/4 in	20 1/4 in	0 in	0 in	20 1/4 in	
Bottom Opening Width- At Edge	At bottom edge	true	Half	1/2 in	20 in	20 in	0 in	0 in	20 in	
Bottom Hem Height	Bottom edge to stitch line or trim seam	false	Full	1/8 in	3/4 in	3/4 in	0 in	0 in	3/4 in	
Sleeve Length from CB Neck	3-point measure from CB Neck to shoulder point to sleeve edge	true	Full	1/2 in	17 1/2 in	17 3/4 in	1/4 in	0 in	17 1/2 in	
Armhole Drop	Below HPS - measure perpendicular	false	Full	1/4 in	11 3/8 in	11 1/8 in	-1/4 in	0 in	11 3/8 in	
Bicep Width	1" below armhole- edge to edge	false	Half	1/4 in	8 in	8 in	0 in	0 in	8 in	
Sleeve Opening Width- At Edge	At edge	false	Half	1/4 in	6 1/2 in	6 1/2 in	0 in	0 in	6 1/2 in	
Armhole Hem Height	Edge to seam- trim width	false	Full	1/8 in	3/4 in	3/4 in	0 in	0 in	3/4 in	
WL Collar Artwork Placement from CF		true	Full	1/8 in	1 3/4 in	1 3/4 in	0 in	0 in	1 3/4 in	
WL Collar Placement Centered on Collar Height		true	Full	1/8 in	0 in	0 in	0 in	0 in	0 in	
Back Artwork Position Above Hem Edge		false	Full	1/8 in	1 1/2 in	1 1/2 in	0 in	0 in	1 1/2 in	

1st Proto - Anastasiya Zolotova

CREATED ON SEP 5, 2025 6:08 PM

1ST PROTO: SIZE:M, CREATED AT: 09-04-2025

SS26CT033 SS Golf Performance Tee

FITTING DATE: 9/4/25**MODEL/ATTENDEES:** Jessica, Cal, Anthony, Megan, Jeni, Anastasiya, Sarah**STATUS:** 1st Proto Approved to PPS**Construction/Workmanship:**

1. Please use lighter quality neck tape, current quality is too thick.
2. Please improve internal neck stitching, see image.
3. The thread quality used in reference sample is softer and stretchier more suitable for this athletic fabric. Are there threads you recommend that have more stretch?
4. SPI is much greater on reference because of the thread quality being used.

Fit Comments:

1. Follow revised neck width of 7 3/4"
2. Collar width at top edge came in +1/4", go back to spec.
3. Front raglan seam placement came in 2 3/4", keep as sample
4. Back raglan seam placement came in 2 1/4" keep as sample
5. Keep across front as sample at 13 3/4"

cấu trúc:

1. sử dụng dây tape cổ mỏng hơn, dây tape hiện tại quá dày
2. cải thiện đường diều bên trong cổ, xem hình
3. chỉ sử dụng trên mẫu tham khảo mềm và co giãn hơn phù hợp với vải thể thao. sử dụng chỉ co giãn hơn
4. SPI lớn hơn nhiều trên tham khảo bởi vì chất lượng chỉ được sử dụng.

fit comments:

1. thay đổi rộng cổ 7 3/4"
2. rộng cổ tại cạnh trên +1/4", điều chỉnh thông số trong dung sai
3. vị trí đường may raglan trước dư 2 3/4", giữ như mẫu
4. vị trí đường may raglan sau dư 2 1/4", giữ như mẫu
5. giữ ngang thân trước như mẫu 13 3/4"



Screen Shot 2025-09-05 at 8.46.33 AM.jpg

SS26CT033 SS Golf Performance Tee

Please improve internal neck stitching, see image.

cải thiện đường diều bên trong cổ như hình

1st proto mẫu proto
reference mẫu tham khảo

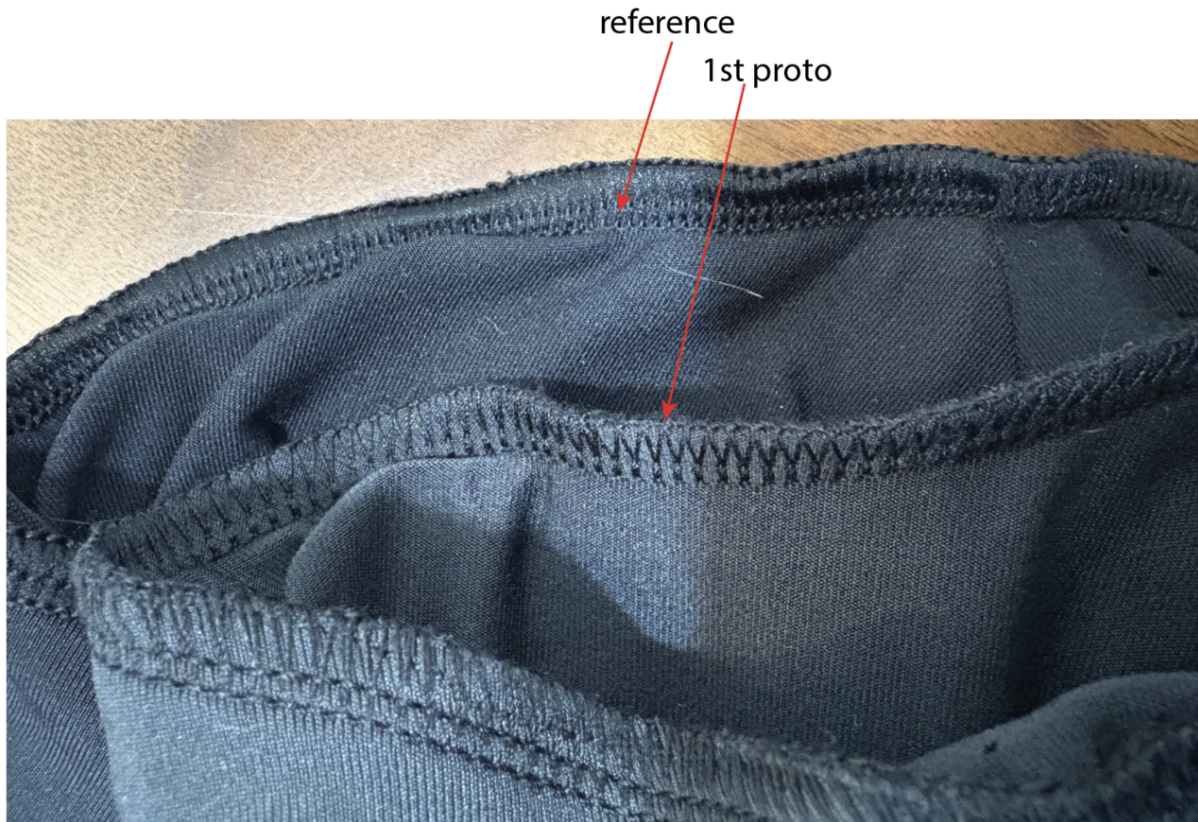


Screen Shot 2025-09-05 at 3.32.12 PM.jpg

1. chỉ sử dụng trên mẫu tham khảo mềm và co giãn hơn phù hợp với vải thể thao. sử dụng chỉ co giãn hơn
2. SPI lớn hơn nhiều trên tham khảo bởi vì chất lượng chỉ được sử dụng.

SS26CT033 SS Golf Performance Tee

1. The thread quality used in reference sample is softer and stretchier more suitable for this athletic fabric.
Are there threads you recommend that have more stretch?
2. SPI is much greater on reference because of the thread quality being used.



Screen Shot 2025-09-05 at 4.44.27 PM.jpg