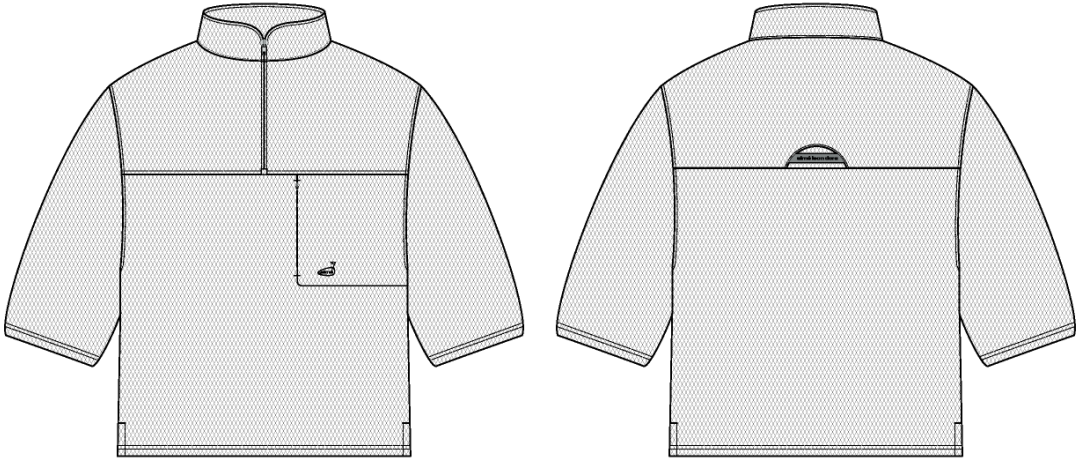
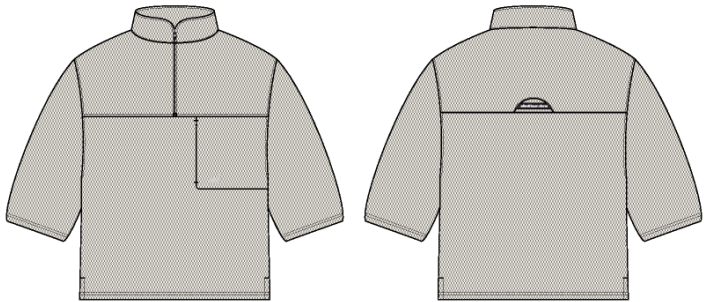


Golf Quarter Zip

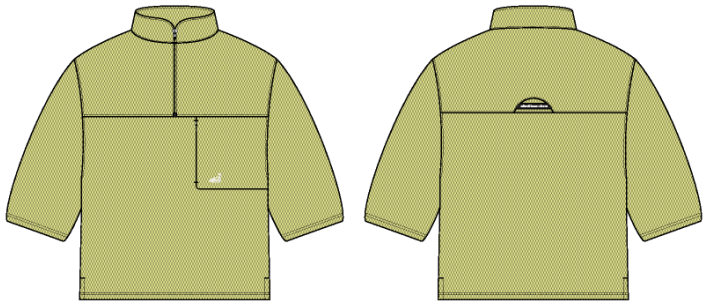
Name	Golf Quarter Zip
Style No.	SS26CS021
Division	Mens
Category	Sweatshirts
Season	Spring/Summer
Year	2026
Size Scale	<div>M</div> -Sample size <div><div>XS</div><div>S</div><div>M</div><div>L</div><div>XL</div><div>XXL</div></div>
Style Status	Adopted
Factory	UN-AVAILABLE
Drop	Golf
Designer Name	Wes
TD Name	Anastasiya
Created by/Author	10/14/2025 Anastasiya Zolotova anastasiya.zolotova@aimeleondore.com



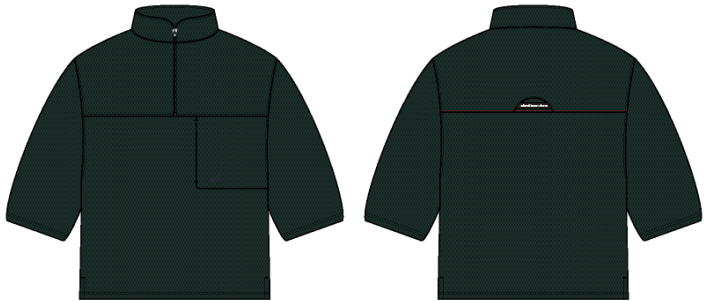
1_B&W-1



COCONUT MILK

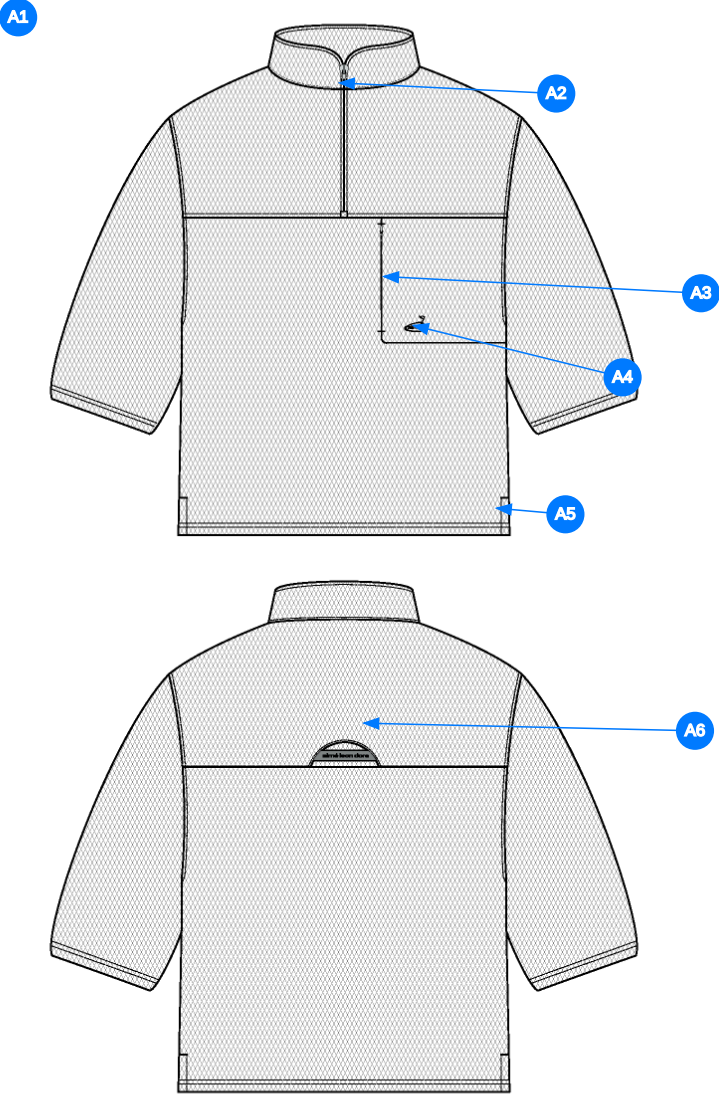


CHARLOCK



PINE GROVE

2_CLR 9-1

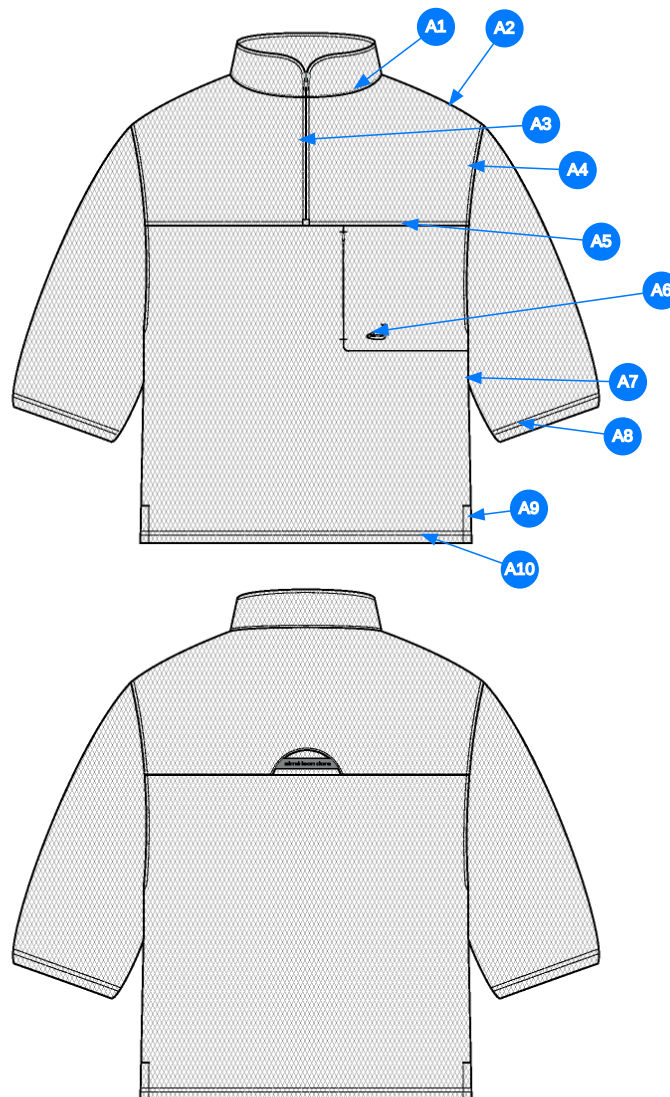


Comments (6)

- A1** FIT: NB 860 Cropped Quarter Zip (NB23CS000)
- A2** KISSING WELT W/ ZIPPER @ CF - ZIPPER: #5 YKK CLOSED. END COIL ZIPPER - SLIDER: DSYG
- A3** INVISIBLE ZIPPER @ WL CHEST -ZIPPER: YKK INVISIBLE CLOSED END COIL ZIPPER - SLIDER: DA4Q1
- A4** ARTWORK @ WL CHEST - SEE SEPARATE FILE FOR ARTWORK DETAILS
- A5** VENT @ SIDE SEAM - TURNBACK W/ COVERSTITCH
- A6** YOKE W/ SET IN LABEL @ BACK -SEE FOLLOWING PAGES FOR CONSTRUCTION

- 1. fit tham khảo NB23CS000
- 2. dây kéo răng 5 giữa cổ trước
- 3. dây kéo ẩn tại túi
- 4. hình thêu tại túi ngực trái
- 5. xẻ lai tại sườn
- 6. nhãn tại đò sau

3_Construction Details-1



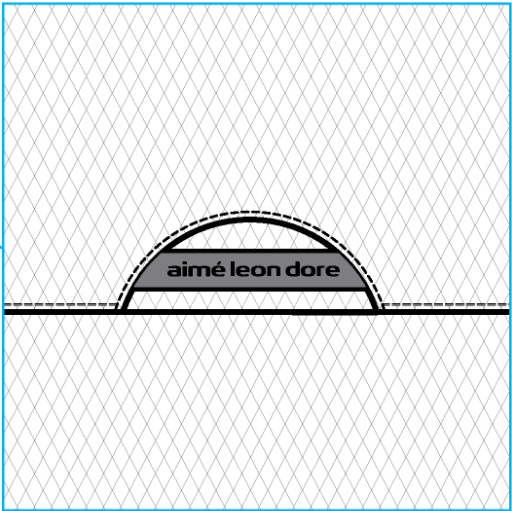
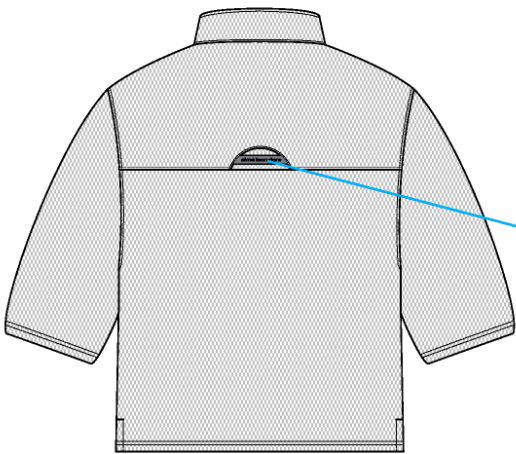
Comments (10)

- A1** STRADDLE STITCH @ SHOULDER SEAM
- A2** 1/8" SN TS @ NECK
- A3** EDGE STITCH @ BINDING
- A4** 1/4" SN TS @ ARMHOLE
- A5** 1/4" SN TS @ SEAM
- A6** CLEAN SEAM FINISH @ POCKET - ADD BAR TACKS @ TOP AND BOTTOM OF OPENING
- A7** CLEAN SEAM FINISH @ SIDE SEAM
- A8** 1/4" DN TS @ SLEEVE OPENING - TURNBACK W/ COVERLOCK STITCH
- A9** 1/8" SN TS @ VENT - ADD BAR TACK @ TOP OF VENT
- A10** 1/4" DN TS @ BOTTOM OPENING - TURNBACK W/ COVERLOCK STITCHING

1. điều rã tại đường may vai
2. điều 1 kim 1/8" tại cổ
3. mí điều tại viền cổ + dây kéo
4. điều 1 kim 1/4" tại nách
5. điều 1 kim 1/4" tại đường may đô trước
6. may sạch tại túi ngực - bộ cạnh trên + cạnh dưới miệng túi
7. may sạch tại đường may sườn
8. điều 2 kim 1/4" tại lại tay
9. điều 1 kim 1/8" tại xẻ lai - bộ tại đỉnh xẻ lai
10. điều 2 kim 1/4" tại lại áo

4_Stitching Details-1

LABEL/YOKE CONSTRUCTION



Yoke Construction-1

Measured Size: M

POINT OF MEASURE	HOW TO MEASURE	CRITICAL	TYPE	TOLERANCE	EXPECTED	1ST PROTO - RCVD	VARIANCE	ADJUST BY +/-	REVISED SPEC	MEASUREMENT NOTES
Front Body Length	HPS to bottom edge	true	Full	1/4 in	27 1/2 in	27 1/2 in	0 in	0 in	27 1/2 in	
Back Body Length	CB neck seam to bottom edge	true	Full	1/4 in	26 3/4 in	26 3/4 in	0 in	0 in	26 3/4 in	
Shoulder Seam Forward	HPS to seam	false	Full	1/8 in	1/2 in	3/8 in	-1/8 in	0 in	1/2 in	
Front Yoke Placement from HPS		true	Full	1/4 in	10 1/8 in	10 in	-1/8 in	0 in	10 1/8 in	
Back Yoke Seam Placement from CB Neck Seam		true	Full	1/8 in	8 in	8 1/4 in	1/4 in	0 in	8 in	Back to Spec
Shoulder Slope	Shoulder point perpendicular to HPS	false	Full	1/4 in	2 in	2 1/8 in	1/8 in	0 in	2 in	
Front Neck Drop	HPS to neck seam	false	Full	1/8 in	3 3/4 in	3 3/4 in	0 in	0 in	3 3/4 in	
Back Neck Drop	HPS to neck seam	false	Full	1/8 in	3/4 in	3/4 in	0 in	0 in	3/4 in	
Back Neck Width	Seam to seam at back neck, at HPS point	false	Full	1/4 in	7 in	7 in	0 in	0 in	7 in	
CF Zipper Length	From neck to bottom edge	false	Full	1/4 in	8 1/4 in	8 1/4 in	0 in	0 in	8 1/4 in	
Collar Height at CB	Neck seam to collar edge at CB	false	Full	1/8 in	2 1/4 in	2 1/2 in	1/4 in	0 in	2 1/4 in	Back to Spec
Across Shoulder	Edge to edge	false	Half	1/4 in	19 in	19 in	0 in	0 in	19 in	
Across Front/Across Back Position from HPS		true	Full	0 in	7 in	7 in	0 in	0 in	7 in	
Across Front	Down from HPS, Seam to seam	false	Half	1/4 in	17 1/2 in	17 3/4 in	1/4 in	0 in	17 1/2 in	
Across Back	Down from HPS, Seam to Seam	false	Half	1/4 in	18 in	0 in	0 in	0 in	18 in	
Chest Width	1" Below armhole- edge to edge	true	Half	1/4 in	22 1/2 in	22 1/2 in	0 in	0 in	22 1/2 in	
Bottom Opening Width- At Edge	At bottom edge	true	Half	1/4 in	22 1/2 in	22 1/2 in	0 in	0 in	22 1/2 in	
Bottom Hem Height	Bottom edge to top of trim	false	Full	1/8 in	1 in	1 in	0 in	0 in	1 in	
Sleeve Length from CB Neck	3-point measure from CB Neck to shoulder point to sleeve edge	true	Full	1/2 in	22 1/2 in	22 3/4 in	1/4 in	0 in	22 1/2 in	
Armhole Drop	Below HPS - measure perpendicular	false	Full	1/4 in	11 3/4 in	11 1/2 in	-1/4 in	0 in	11 3/4 in	
Bicep Width	1" below armhole- edge to edge	false	Half	1/4 in	9 5/8 in	9 1/2 in	-1/8 in	0 in	9 5/8 in	
Sleeve Opening Width- At Edge	At edge	false	Half	1/4 in	7 3/4 in	7 3/4 in	0 in	0 in	7 3/4 in	
Sleeve Turnback Height	Cuff edge to seam	false	Full	1/8 in	1 in	1 in	0 in	0 in	1 in	
Side Slit Height	From bottom edge to top of slit	false	Full	1/8 in	2 in	1 7/8 in	-1/8 in	0 in	2 in	
WL Chest Pocket Height		true	Full	1/4 in	6 3/4 in	6 5/8 in	-1/8 in	0 in	6 3/4 in	
WL Chest Pocket Width	To Armhole Seam	true	Full	1/4 in	9 3/8 in	9 1/2 in	1/8 in	0 in	9 3/8 in	
WL Chest Pocket Zipper Length		true	Full	1/8 in	5 3/4 in	5 1/2 in	-1/4 in	0 in	5 3/4 in	Back to Spec
WL Chest Pocket Placement from CF Line		false	Full	1/8 in	2 in	2 in	0 in	0 in	2 in	
Artwork Placement at WL Chest Pocket from Bottom Edge		true	Full	1/8 in	1/2 in	1/2 in	0 in	0 in	1/2 in	
Artwork Placement At WL Chest Pocket from Side of Pocket		true	Full	1/8 in	3/8 in	3/8 in	0 in	0 in	3/8 in	

1st Proto - Anastasiya Zolotova

CREATED ON OCT 14, 2025 9:10 PM
1ST PROTO: SIZE:M, CREATED AT: 10-06-2025

SS26CS021 Golf Quarter Zip
FITTING DATE: 10/7/25
MODEL/ATTENDEES: Anthony, Jessica, Cal, Jeni, Anastasiya, Hyeyoung, Sarah
STATUS: 1st Proto Approved to 1st Fit

- Construction/Workmanship:**
- 1. Please use performance thread approved in mock up for SS26CT033 SS Golf Performance Tee for seams all over.
 - 2. The back cut out detail is small separate panel. See image. There should not be a cut out with no fabric.

- Fit Comments:**
- 1. Back yoke seam came in +1/4", go back to spec.
 - 2. Collar height at CB came in +1/4", go back to spec.
 - 3. WL chest pocket zipper length came in -1/4", go back to spec.

- cấu trúc:**
- 1. sử dụng chỉ tơ như mockup duyệt chỉ mã SS26CT033 cho tất cả đường may
 - 2. miếng BTP nhỏ ở nhãn đỏ sau là miếng btp nhỏ rời. Xem hình bên dưới. Không nên có phần cắt ra mà không có vải.
- fit comment:**
- 1. đường may đỏ sau +1/4", điều chỉnh thông số trong dung sai
 - 2. cao cổ tại giữa sau +1/4", điều chỉnh thông số trong dung sai
 - 3. dài dây kéo túi ngực trái -1/4", điều chỉnh thông số trong dung sai



Screen Shot 2025-10-10 at 12.51.10 PM.jpg



Screen Shot 2025-10-14 at 5.24.11 PM.jpg