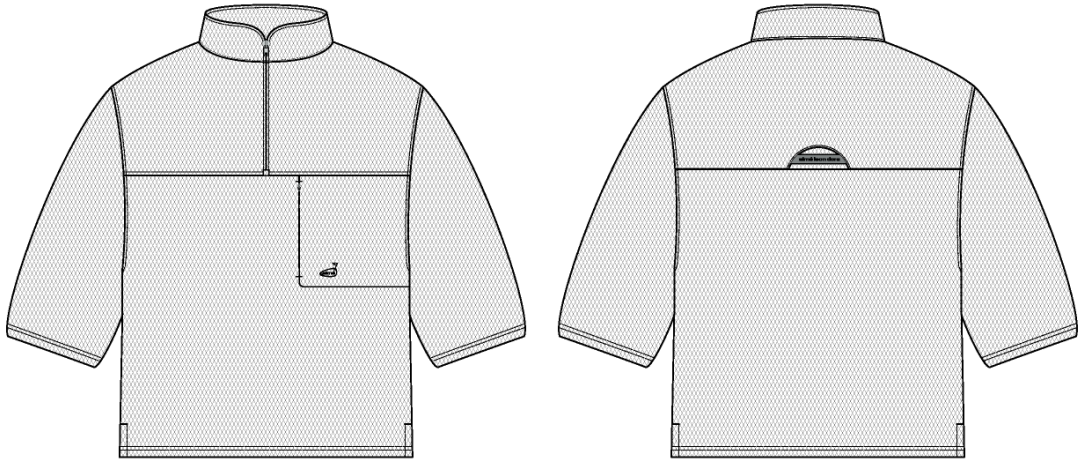
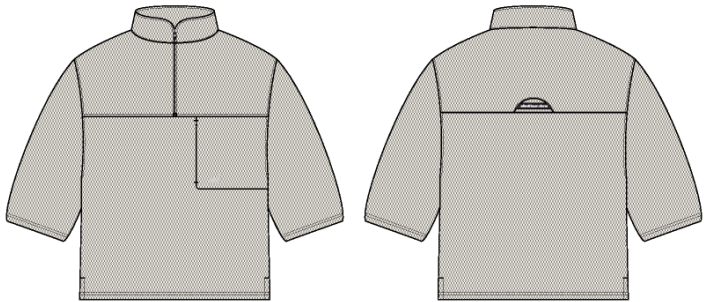


Golf Quarter Zip

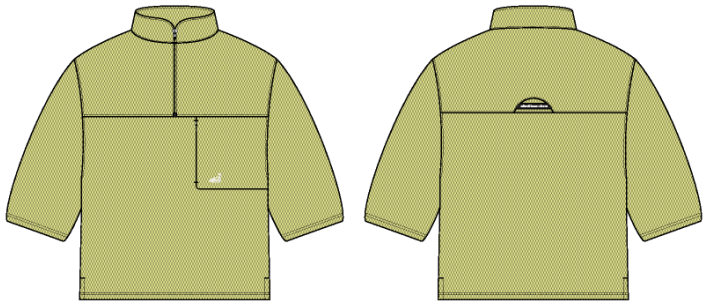
|                   |   |
|-------------------|---|
| Name              | Golf Quarter Zip  |
| Style No.         | SS26CS021   |
| Division          | Mens  |
| Category          | Sweatshirts   |
| Season            | Spring/Summer   |
| Year              | 2026  |
| Size Scale        | <div>M</div> -Sample size <div><div>XS</div><div>S</div><div>M</div><div>L</div><div>XL</div><div>XXL</div></div> |
| Style Status      | Adopted   |
| Factory           | UN-AVAILABLE  |
| Drop              | Golf  |
| Designer Name     | Wes   |
| TD Name           | Anastasiya  |
| Created by/Author | 8/20/2025<br>Jeni Fitzgerald<br>jeni.fitzgerald@aimeleondore.com  |



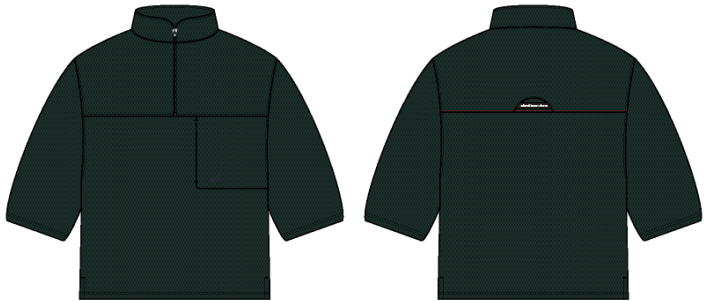
1\_B&W-1



COCONUT MILK

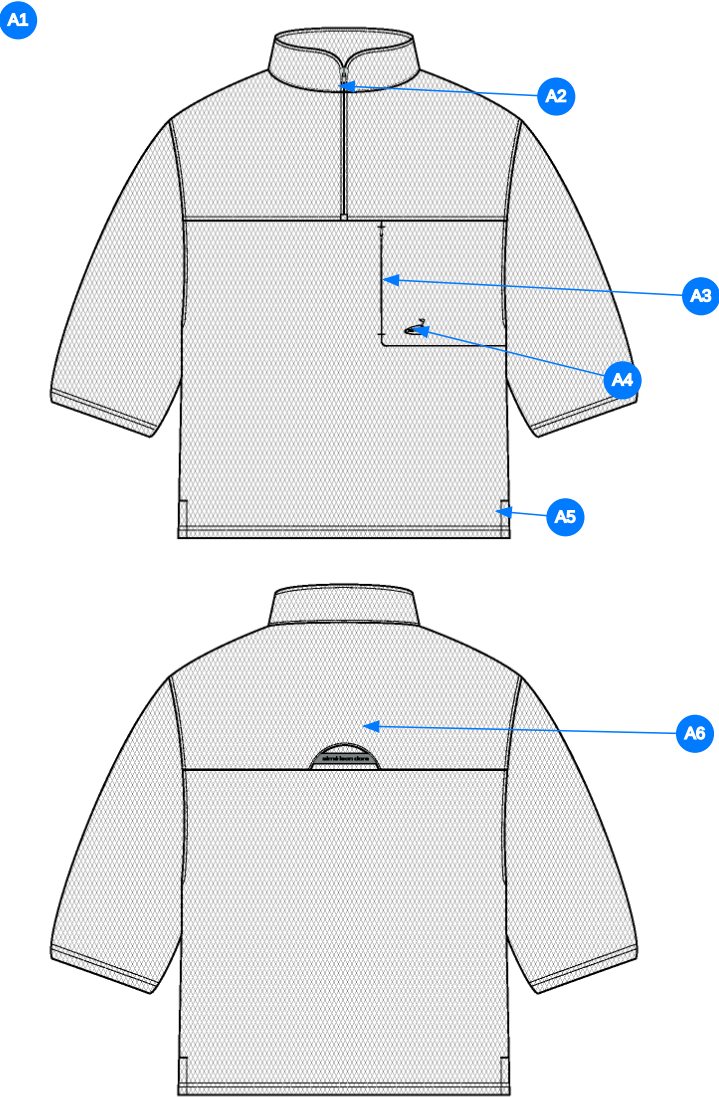


CHARLOCK



PINE GROVE

2\_CLR 9-1

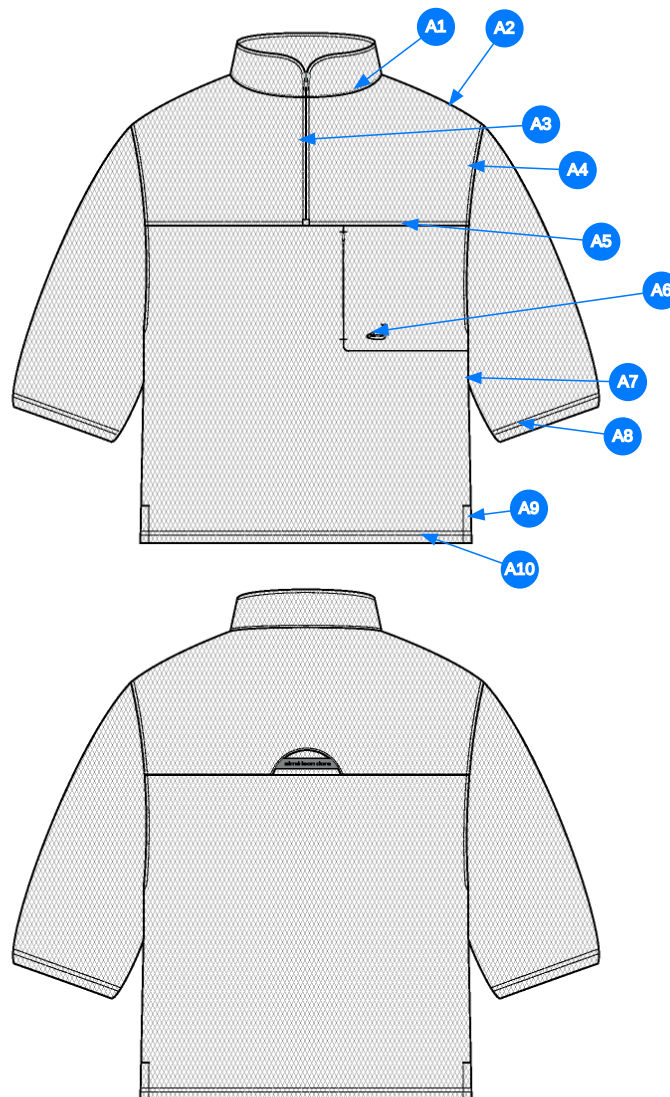


Comments (6)

- A1 FIT: NB 860 Cropped Quarter Zip (NB23CS000)
- A2 KISSING WELT W/ ZIPPER @ CF - ZIPPER: #5 YKK CLOSED. END COIL ZIPPER - SLIDER: DSYG
- A3 INVISIBLE ZIPPER @ WL CHEST - ZIPPER: YKK INVISIBLE CLOSED END COIL ZIPPER - SLIDER: DA4Q1
- A4 ARTWORK @ WL CHEST - SEE SEPARATE FILE FOR ARTWORK DETAILS
- A5 VENT @ SIDE SEAM - TURNBACK W/ COVERSTITCH
- A6 YOKE W/ SET IN LABEL @ BACK -SEE FOLLOWING PAGES FOR CONSTRUCTION

1. tham khảo NB23CS000
2. dây kéo coil đóng răng 5 đầu DSYG tại giữa trước
3. dây kéo ẩn tại túi ngực trái
4. artwork tại ngực trái
5. xẻ lai
6. đồ + nhãn tại thân sau

3\_Construction Details-1



Comments (10)

- A1** STRADDLE STITCH @ SHOULDER SEAM
- A2** 1/8" SN TS @ NECK
- A3** EDGE STITCH @ BINDING
- A4** 1/4" SN TS @ ARMHOLE
- A5** 1/4" SN TS @ SEAM
- A6** CLEAN SEAM FINISH @ POCKET - ADD BAR TACKS @ TOP AND BOTTOM OF OPENING
- A7** CLEAN SEAM FINISH @ SIDE SEAM
- A8** 1/4" DN TS @ SLEEVE OPENING - TURNBACK W/ COVERLOCK STITCH
- A9** 1/8" SN TS @ VENT - ADD BAR TACK @ TOP OF VENT
- A10** 1/4" DN TS @ BOTTOM OPENING - TURNBACK W/ COVERLOCK STITCHING

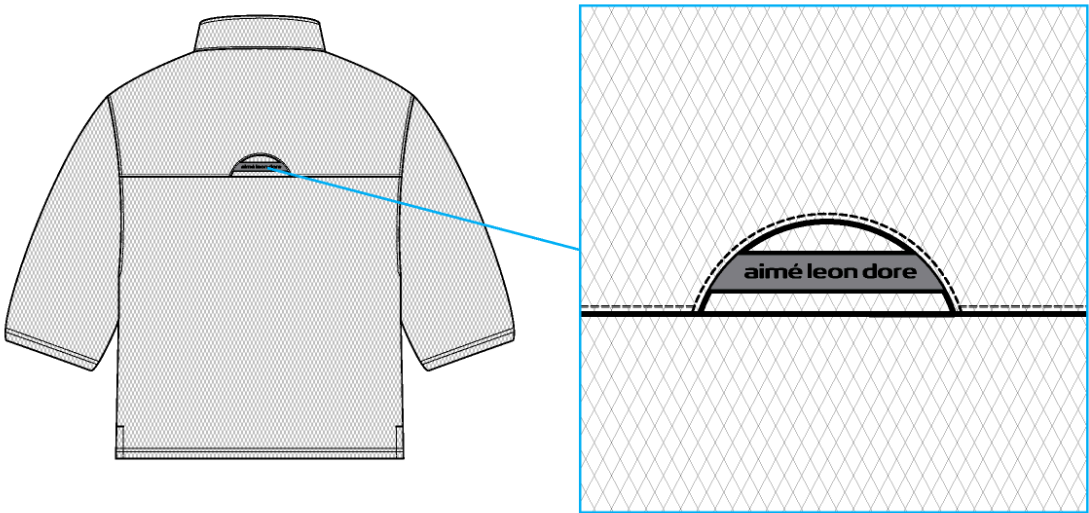
1. điều rẽ tại đường may vai
2. điều 1 kim 1/8" tại cổ
3. mí điều tại dây kéo
4. điều 1 kim 1/4" nách
5. điều 1 kim 1/4" tại đường may đô thân trước
6. may sạch tại túi - thêm bộ tại cạnh trên cạnh dưới miệng túi
7. may sạch tại đường may sườn
8. điều 2 kim 1/4" tại lai tay
9. điều 1 kim 1/8" tại xẻ lai - thêm bộ tại đỉnh xẻ lai
10. điều 2 kim 1/4" tại lai áo

4\_Stitching Details-1



cấu trúc nhãn đô sau

LABEL/YOKE CONSTRUCTION



Yoke Construction-1

Sample Size: M

| POINT OF MEASURE   | CODE   | HOW TO MEASURE  | CRITICAL | TYPE | TOLERANCE | M         |
|--|--------|---|----------|------|-----------|-----------|
| Front Body Length  | S&K01  | HPS to bottom edge  | true     | Full | 1/4 in    | 27 1/2 in |
| Back Body Length   | S&K02  | CB neck seam to bottom edge                                   | true     | Full | 1/4 in    | 26 3/4 in |
| Shoulder Seam Forward                                    | S&K007 | HPS to seam   | false    | Full | 1/8 in    | 1/2 in    |
| Front Yoke Placement from HPS                            | vyrPxM |   | true     | Full | 1/4 in    | 10 1/8 in |
| Back Yoke Seam Placement from CB Neck Seam               | BBd19O |   | true     | Full | 1/8 in    | 8 in      |
| Shoulder Slope   | S&K08  | Shoulder point perpendicular to HPS                           | false    | Full | 1/4 in    | 2 in      |
| Front Neck Drop  | S&K04  | HPS to neck seam  | false    | Full | 1/8 in    | 3 3/4 in  |
| Back Neck Drop   | S&K05  | HPS to neck seam  | false    | Full | 1/8 in    | 3/4 in    |
| Back Neck Width  | S&K06  | Seam to seam at back neck, at HPS point                       | false    | Full | 1/4 in    | 7 in      |
| CF Zipper Length   | S&K03  | From neck to bottom edge                                      | false    | Full | 1/4 in    | 8 1/4 in  |
| Collar Height at CB                                      | S&K025 | Neck seam to collar edge at CB                                | false    | Full | 1/8 in    | 2 1/4 in  |
| Across Shoulder  | S&K09  | Edge to edge  | false    | Half | 1/4 in    | 19 in     |
| Across Front/Across Back Position from HPS               | eos7YR |   | true     | Full | 0 in      | 7 in      |
| Across Front   | S&K010 | Down from HPS, Seam to seam                                   | false    | Half | 1/4 in    | 17 1/2 in |
| Across Back  | S&K011 | Down from HPS, Seam to Seam                                   | false    | Half | 1/4 in    | 18 in     |
| Chest Width  | S&K012 | 1" Below armhole- edge to edge                                | true     | Half | 1/4 in    | 22 1/2 in |
| Bottom Opening Width- At Edge                            | S&K013 | At bottom edge  | true     | Half | 1/4 in    | 22 1/2 in |
| Bottom Hem Height  | S&K83  | Bottom edge to top of trim                                    | false    | Full | 1/8 in    | 1 in      |
| Sleeve Length from CB Neck                               | S&K032 | 3-point measure from CB Neck to shoulder point to sleeve edge | true     | Full | 1/2 in    | 22 1/2 in |
| Armhole Drop   | S&K016 | Below HPS - measure perpendicular                             | false    | Full | 1/4 in    | 11 3/4 in |
| Bicep Width  | S&K017 | 1" below armhole- edge to edge                                | false    | Half | 1/4 in    | 9 5/8 in  |
| Sleeve Opening Width- At Edge                            | S&K73  | At edge   | false    | Half | 1/4 in    | 7 3/4 in  |
| Sleeve Turnback Height                                   | S&K36  | Cuff edge to seam   | false    | Full | 1/8 in    | 1 in      |
| Side Slit Height   | S&K93  | From bottom edge to top of slit                               | false    | Full | 1/8 in    | 2 in      |
| WL Chest Pocket Height                                   | jD7WwJ |   | true     | Full | 1/4 in    | 6 3/4 in  |
| WL Chest Pocket Width                                    | HjCwLM | To Armhole Seam   | true     | Full | 1/4 in    | 9 3/8 in  |
| WL Chest Pocket Zipper Length                            | 6UtkNV |   | true     | Full | 1/8 in    | 5 3/4 in  |
| WL Chest Pocket Placement from CF Line                   | S&K401 |   | false    | Full | 1/8 in    | 2 in      |
| Artwork Placement at WL Chest Pocket from Bottom Edge    | 4vvbf2 |   | true     | Full | 1/8 in    | 1/2 in    |
| Artwork Placement At WL Chest Pocket from Side of Pocket | kwBZyV |   | true     | Full | 1/8 in    | 3/8 in    |

Development Notes - Anastasiya Zolotova

CREATED ON AUG 18, 2025 2:49 PM

SS26CS021 Golf Quarter Zip  
Date: 8/18/25  
TD: Anastasiya























Fit: Follow reference sample, measurement page, and design sketch to make 1st proto. (SS25CS011 Golf Quarter Zip-Reference Image)




fit: tham khảo mẫu tham khảo, trang thông số và sketch để làm mẫu proto. (mẫu tham khảo mã SS25CS011 - hình đính kèm)





Screen Shot 2025-08-18 at 10.48.19 AM.jpg

| COMPONENT              |   | QTY     | 1.  COCONUT MILK<br>CODE: 11-0608 TCX   | 2.  CHARLOCK<br>CODE: 12-0530 TCX   | 3.  PINE GROVE<br>CODE: 19-5406 TCX   |
|------------------------|---|---------|--|--|--|
| FABRIC                 |   |         |  |  |  |
| 1                      | <b>DIAMOND JACQUARD (AAG)</b><br>CODE: HX32008 / UC0AI / WNS127<br>Placement: BODY, ZIPPER END GARAGE Supplier: Guangdong Golden Horizon Industry Co.,Ltd Width: 150<br>Weight: 270gsm Country of Origin: CHINA |         | -  Coconut Milk<br>Custom Code: 11-0608 TCX<br>Price: 0.00                    | -  Charlock<br>Custom Code: 12-0530 TCX<br>Price: 0.00                    | -  Pine Grove<br>Custom Code: 19-5406 TCX<br>Price: 0.00                    |
| 2                      | <b>IN DEV</b><br>CODE: TBD<br>Placement: CF ZIPPER TAPE Notes: DTM POLY BINDING AS REFERENCE SAMPLE, PLS ADVISE ART #   |         | - IN DEV<br>Price: 0.00  | - IN DEV<br>Price: 0.00  | - IN DEV<br>Price: 0.00  |
| 3                      | <b>YKK COIL CLOSED END ZIPPER</b><br>CODE: TBD<br>Placement: @ CF Supplier: YKK   |         | -  Coconut Milk<br>Custom Code: 11-0608 TCX<br>SIZE: 5GG<br>Price: 0.00       | -  Charlock<br>Custom Code: 12-0530 TCX<br>SIZE: 5GG<br>Price: 0.00       | -  Pine Grove<br>Custom Code: 19-5406 TCX<br>SIZE: 5GG<br>Price: 0.00       |
| 4                      | <b>YKK Zipper Tape</b><br>CODE: YKK   |         | -  030<br>Custom Code: COCONUT MILK 11-0608 TCX<br>Price: 0.00                | Not used   | -  017<br>Custom Code: PINE GROVE 19-5406 TCX<br>Price: 0.00                |
| 5                      | <b>YKK DSYG Zipper Slider</b><br>CODE: DSYG<br>Placement: @ CF ZIPPER   |         | -  Coconut Milk<br>Custom Code: 11-0608 TCX<br>Price: 0.00                    | -  Jet Black<br>Custom Code: 19-0303 TCX<br>Price: 0.00                   | -  Undefined<br>Price: 0.00   |
| 6                      | <b>YKK INVISIBLE ZIPPER</b><br>CODE: TBD<br>Placement: @ WL CHEST Supplier: YKK   |         | -  Coconut Milk<br>Custom Code: 11-0608 TCX<br>SIZE: Undefined<br>Price: 0.00 | -  Charlock<br>Custom Code: 12-0530 TCX<br>SIZE: Undefined<br>Price: 0.00 | -  Pine Grove<br>Custom Code: 19-5406 TCX<br>SIZE: Undefined<br>Price: 0.00 |
| 7                      | <b>YKK Zipper Tape</b><br>CODE: YKK   |         | -  030<br>Custom Code: COCONUT MILK 11-0608 TCX<br>Price: 0.00               | Not used   | -  017<br>Custom Code: PINE GROVE 19-5406 TCX<br>Price: 0.00               |
| 8                      | <b>YKK DA4Q1 Zipper Slider</b><br>CODE: DA4Q1<br>Placement: @ WL CHEST ZIPPER Supplier: YKK   |         | -  Coconut Milk<br>Custom Code: 11-0608 TCX<br>Price: 0.00                  | -  Charlock<br>Custom Code: 12-0530 TCX<br>Price: 0.00                  | -  Pine Grove<br>Custom Code: 19-5406 TCX<br>Price: 0.00                  |
| 9                      | <b>ARTWORK</b><br>CODE: EMBROIDERY<br>Placement: @ WL CHEST Notes: EMBROIDERY, FOLLOW ARTWORK FILE AND POM Supplier: Factory Sourced  |         | - ARTWORK<br>Price: 0.00   | - ARTWORK<br>Price: 0.00   | - ARTWORK<br>Price: 0.00   |
| LABEL AND TRIM PACKAGE |   |         |  |  |  |
| 10                     | <b>ALD Golf Hat Label (Small)</b><br>CODE: 2024100016<br>Placement: CB YOKE Supplier: Shining   | 1 Piece | - ALD Golf Hat Label (small)<br>Price: 0.36  | - ALD Golf Hat Label (small)<br>Price: 0.36  | - ALD Golf Hat Label (small)<br>Price: 0.36  |
| 11                     | <b>ALD Golf Shirt Label</b><br>CODE: 2024100014<br>Placement: CB NECK INTERIOR Supplier: Shining  | 1 Piece | - ALD Golf Shirt Label<br>Price: 0.62  | - ALD Golf Shirt Label<br>Price: 0.62  | - ALD Golf Shirt Label<br>Price: 0.62  |

| COMPONENT     |  | QTY     | 1.  COCONUT MILK<br>CODE: 11-0608 TCX | 2.  CHARLOCK<br>CODE: 12-0530 TCX | 3.  PINE GROVE<br>CODE: 19-5406 TCX |
|---------------|--|---------|--|--|--|
| 12            | <b>ALD Golf Hang Tag</b><br>CODE: ALD-T40P<br>Supplier: Colonial   | 1 M     | -<br>ALD Golf Hang Tag<br>Price: 325.00  | -<br>ALD Golf Hang Tag<br>Price: 325.00  | -<br>ALD Golf Hang Tag<br>Price: 325.00  |
| 13            | <b>ALD Golf Poly Bag Large 18" X 15"</b><br>CODE: ALD-PB157-R<br>Supplier: Colonial  | 1       | -<br>ALD Golf Poly Bag Large 18" x 15"<br>Price: 0.00  | -<br>ALD Golf Poly Bag Large 18" x 15"<br>Price: 0.00  | -<br>ALD Golf Poly Bag Large 18" x 15"<br>Price: 0.00  |
| 14            | <b>ALD Woven Care + Content + COO Label</b><br>CODE: ALD-COO-XXX<br>Placement: INTERIOR WEARER'S LEFT SIDE SEAM, 5"<br>ABOVE BODY HEM Supplier: Colonial Country of Origin:<br>CHINA | 1 Piece | -<br>ALD Woven Care + Content + COO Label<br>Price: 0.058  | -<br>ALD Woven Care + Content + COO Label<br>Price: 0.058  | -<br>ALD Woven Care + Content + COO Label<br>Price: 0.058  |
| 15            | <b>UPC Sticker</b><br>CODE: UPC<br>Placement: POLY BAG; BACK SIDE, UPPER RIGHT HAND<br>CORNER Supplier: Factory Sourced  | 1       | -<br>UPC Sticker<br>Price: 0.00  | -<br>UPC Sticker<br>Price: 0.00  | -<br>UPC Sticker<br>Price: 0.00  |
| Components 15 |  |         | Total 326.038  | Total 326.038  | Total 326.038  |