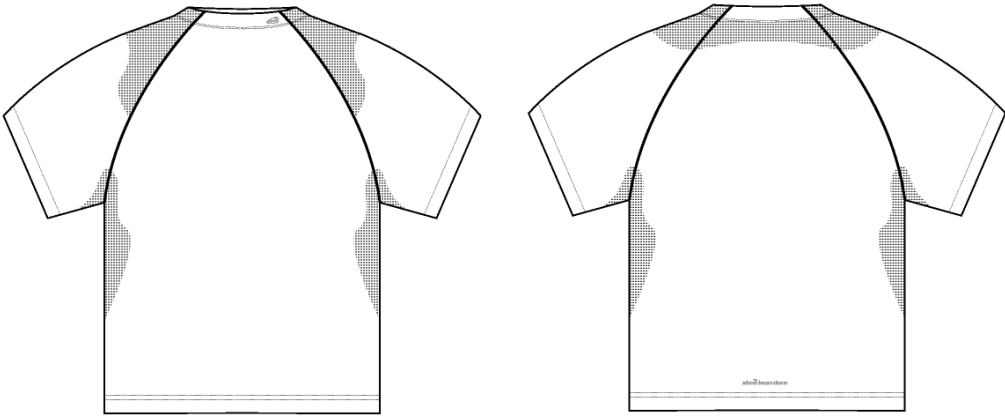


Name	SS Golf Performance Tee
Style No.	SS26CT033
Division	Mens
Category	Tees
Season	Spring/Summer
Year	2026
Size Scale	<div>M</div> -Sample size
	<div>XS</div> <div>S</div> <div>M</div> <div>L</div> <div>XL</div> <div>XXL</div>
Style Status	Development
Factory	UN-AVAILABLE
Designer Name	Wes
TD Name	Anastasiya
Created by/Author	5/28/2025 Jeni Fitzgerald jeni.fitzgerald@aimeleondore.com

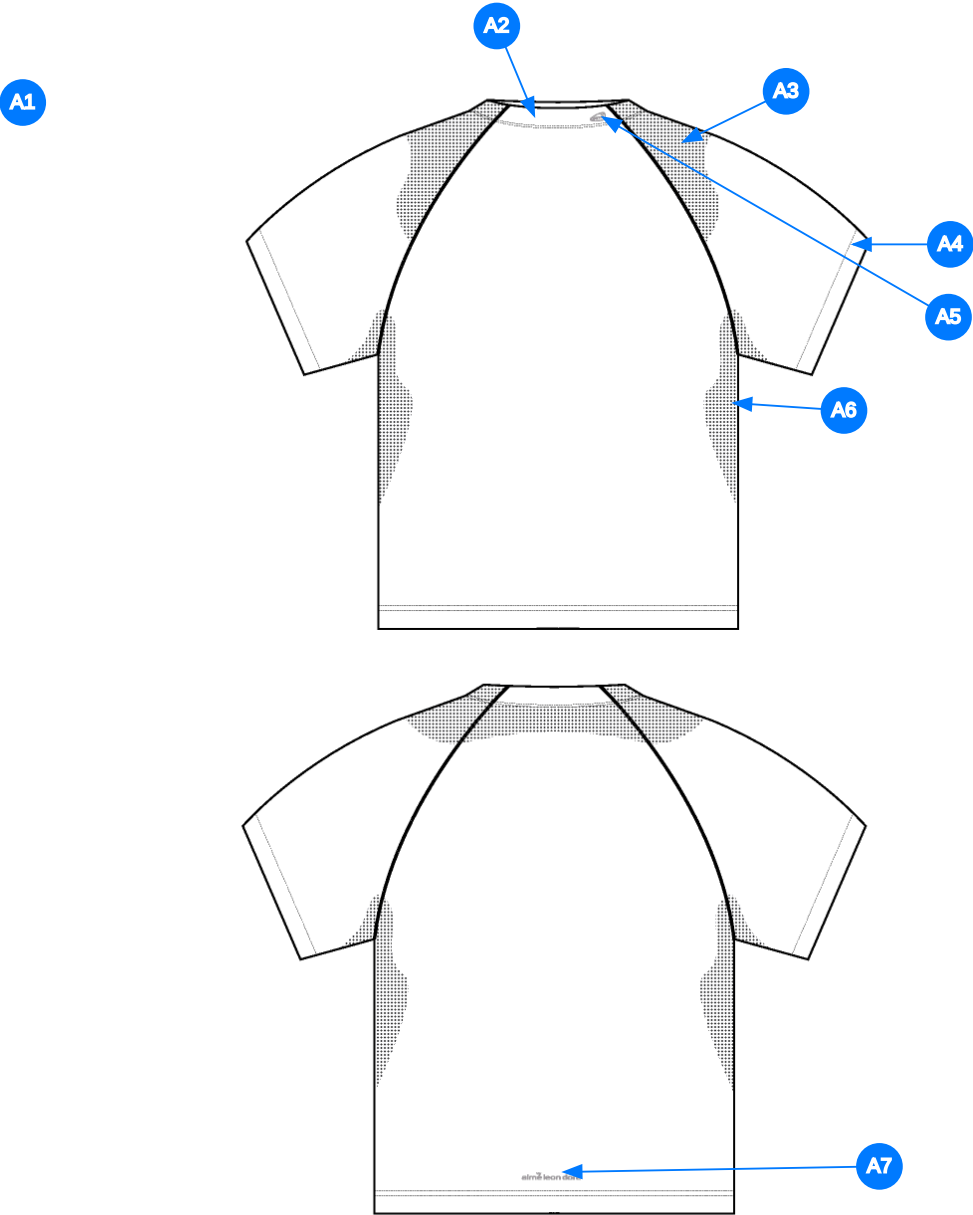
SS Golf Performance Tee



1_B&W-1



2_CLR-1

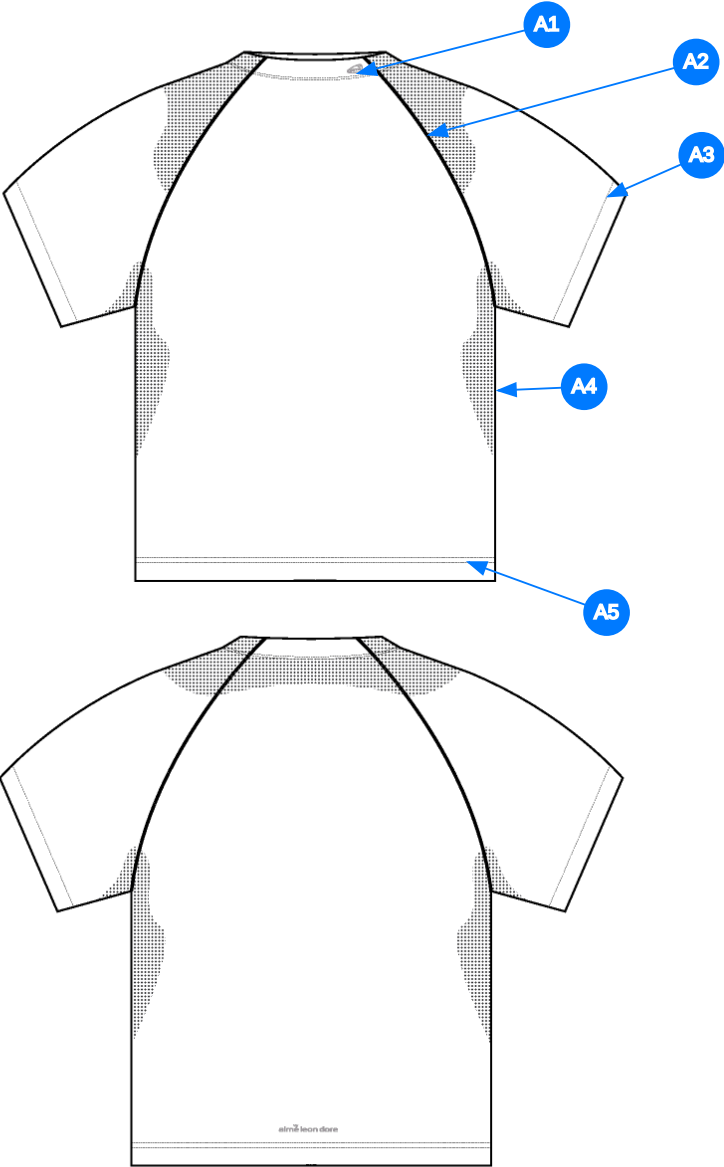


3_Construction Details-1

Comments (7)

- A1 FIT: SS25CT041
- A2 SELF FABRIC COLLAR @ NECK TRIM - POLY TAPE ALONG NECK
- A3 LASERCUT PERFORATION @ SLEEVE - SEE FOLLOWING PAGE FOR EXECUTION REFERENCE
- A4 SELF FABRIC @ SLEEVE CUFF
- A5 ARTWORK @ NECK - SEEE SEPARATE FILE FOR ARTWORK DETAILS.
- A6 LASERCUT PERFORATION @ SIDE SEAM
- A7 ARTWORK @ BACK BODY -SEE SEPARATE FILE FOR ARTWORK DETAILS.

1. Fit:
2. cổ bằng vải chính - dây tape poly dọc viền cổ sau
3. cắt lasercut tại tay - tham khảo áo mẫu
4. lai tay bằng vải chính
5. hình in tại cổ
6. cắt lasercut tại sườn - tham khảo áo mẫu
7. hình in tại thân sau



4_Stitching Details-1

Comments (5)

- A1 1/4" DN TS @ NECK
- A2 COVERLOCK STITCHING @ RAGLAN SEAM
- A3 1/4" DN TS @ SLEEVE CUFF
- A4 CLEAN SEAM FINISH @ SIDE SEAM
- A5 1/4" DN TS @ BOTTOM HEM

- 1. điều 2 kim 1/4" tại cổ
- 2. vắt sổ tại đường may raglan
- 3. điều 2 kim 1/4" tại lai tay
- 4. may sạch tại sườn
- 5. điều 2 kim 1/4" tại lai áo

Sample Size: M

POINT OF MEASURE	CODE	HOW TO MEASURE	CRITICAL	TYPE	TOLERANCE	M
Front Body Length	S&K01	HPS to bottom edge	true	Full	1/2 in	27 in
Back Body Length	S&K02	CB neck seam to bottom edge	true	Full	1/2 in	26 1/4 in
Front Neck Drop	S&K04	HPS to neck seam	false	Full	1/8 in	3 1/4 in
Back Neck Drop	S&K05	HPS to neck seam	false	Full	1/8 in	3/4 in
Back Neck Width	S&K06	Seam to seam at back neck, at HPS point	false	Full	1/4 in	7 1/2 in
Neck Trim Height	S&K254	Neck Seam to trim edge (before folded)	false	Full	1/8 in	1 3/8 in
Collar Width at Top Edge	S&K228		false	Full	1/8 in	7 3/4 in
Front Raglan Seam Placement at Neck	S&K038	HPS to raglan seam along the neckline	false	Full	1/8 in	2 3/8 in
Back Raglan Seam Placement at Neck	S&K039	HPS to raglan seam along neckline	false	Full	1/8 in	1 1/2 in
Raglan Shoulder Slope	S&K08	9 1/2" From CB	false	Full	1/4 in	2 in
Across Front/Across Back Position from HPS	eos7YR		true	Full	0 in	7 in
Across Front	S&K010	Down from HPS, Seam to seam	false	Half	3/8 in	13 1/4 in
Across Back	S&K011	Down from HPS, Seam to Seam	false	Half	3/8 in	14 in
Chest Width	S&K012	1" Below armhole- edge to edge	true	Half	1/2 in	20 1/4 in
Bottom Opening Width- At Edge	S&K013	At bottom edge	true	Half	1/2 in	20 in
Bottom Hem Height	S&K014	Bottom edge to stitch line or trim seam	false	Full	1/8 in	3/4 in
Sleeve Length from CB Neck	S&K032	3-point measure from CB Neck to shoulder point to sleeve edge	true	Full	1/2 in	17 1/2 in
Armhole Drop	S&K016	Below HPS - measure perpendicular	false	Full	1/4 in	11 3/8 in
Bicep Width	S&K017	1" below armhole- edge to edge	false	Half	1/4 in	8 in
Sleeve Opening Width- At Edge	S&K73	At edge	false	Half	1/4 in	6 1/2 in
Armhole Hem Height	S&K019	Edge to seam- trim width	false	Full	1/8 in	3/4 in
WL Collar Artwork Placement from CF	mKRtpL		true	Full	1/8 in	1 3/4 in
WL Collar Placement Centered on Collar Height	XeLmss		true	Full	1/8 in	0 in
Back Artwork Position Above Hem Edge	S&K381		false	Full	1/8 in	1 1/2 in

Development Notes - Anastasiya Zolotova

CREATED ON APR 16, 2025 7:02 PM

SS26CT033 SS Golf Performance Tee

Date: 4/16/25

Status: 1st Proto

TD: Anastasiya

Fit: Please follow reference pattern to create 1st proto. **fit: tham khảo rập khách gửi làm mẫu proto**

1st Proto Remake: Please let me know if UA cant accommodate any of these changes.

-Please bond front and back raglan seams and neck trim as reference sample.

-1st Proto from UA did not get over the head, please utilize bonding at collar seams and use an elasticated merrow for internal seams so that the sample can meet requested 11 1/2" minimum stretch . See thread quality on reference sample at neck interior.

-Remove top stitching at neck, follow reference sample to have only SNES at neck collar interior

-Add laser artwork at panels following reference sample

Làm lại mẫu proto: vui lòng phản hồi lại nếu không thể làm được bất kỳ thay đổi gì bên dưới:

- thêm ép nhiệt tại đường may raglan trước và sau, và tại cổ như mẫu tham khảo

- mẫu 1st proto khách không chui đầu qua được, vui lòng sử dụng ép nhiệt tại các đường may cổ áo và dùng loại chỉ merrow co giãn ở các đường may bên trong, để mẫu có thể đạt yêu cầu co giãn tối thiểu là 11 1/2 inch. Tham khảo chất lượng chỉ trên mẫu tham khảo ở phần bên trong cổ áo.

- bỏ đường diễu tại cổ, tham khảo mẫu tham khảo chỉ mí diễu mặt trong cổ

- thêm lasercut tại tham khảo mẫu tham khảo.

COMPONENT		QTY	1.  PROTO
FABRIC			
1	HMSY2906 INTERLOCK CODE: HMSY2906 Placement: BODY, NECK TRIM, SLEEVE CUFFS Supplier: UNAVAILABLE Weight: 200 GSM Country of Origin: VIETNAM		-  Undefined Price: 0.00
2	IN DEV CODE: TBD Placement: @ BACK NECK Notes: POLY NECK TAPE; PLS ADVISE ARTICLE #		- IN DEV Price: 0.00
3	ARTWORK CODE: AS CORRESPONDING FILE Placement: @ WL NECK Notes: FOLLOW ARTWORK FILE AND POM Supplier: Factory Sourced		- ARTWORK Price: 0.00
4	ARTWORK CODE: AS CORRESPONDING FILE Placement: @ CB HEM Notes: FOLLOW ARTWORK FILE AND POM Supplier: Factory Sourced		- ARTWORK Price: 0.00
5	ARTWORK CODE: AS CORRESPONDING FILE Placement: @ SLEEVE AND SIDE SEAM Notes: LASER CUT PERFORATION, FOLLOW ARTWORK AND POM Supplier: Factory Sourced		- ARTWORK Price: 0.00
LABEL AND TRIM PACKAGE			
Components 5			Total 0.00