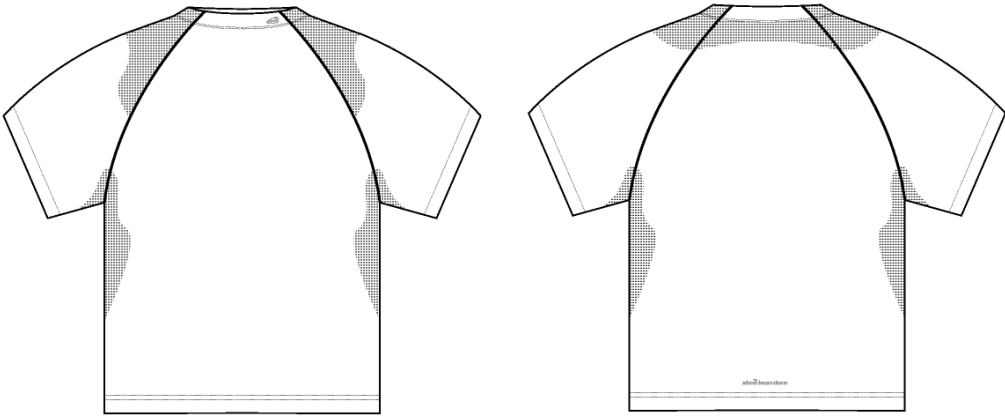


Name	SS Golf Performance Tee
Style No.	SS26CT033
Division	Mens
Category	Tees
Season	Spring/Summer
Year	2026
Size Scale	<div>M</div> -Sample size <div><div>XS</div><div>S</div><div>M</div><div>L</div><div>XL</div><div>XXL</div></div>
Style Status	Development
Factory	UN-AVAILABLE
Designer Name	Wes
TD Name	Anastasiya
Created by/Author	4/18/2025 Jeni Fitzgerald jeni.fitzgerald@aimeleondore.com

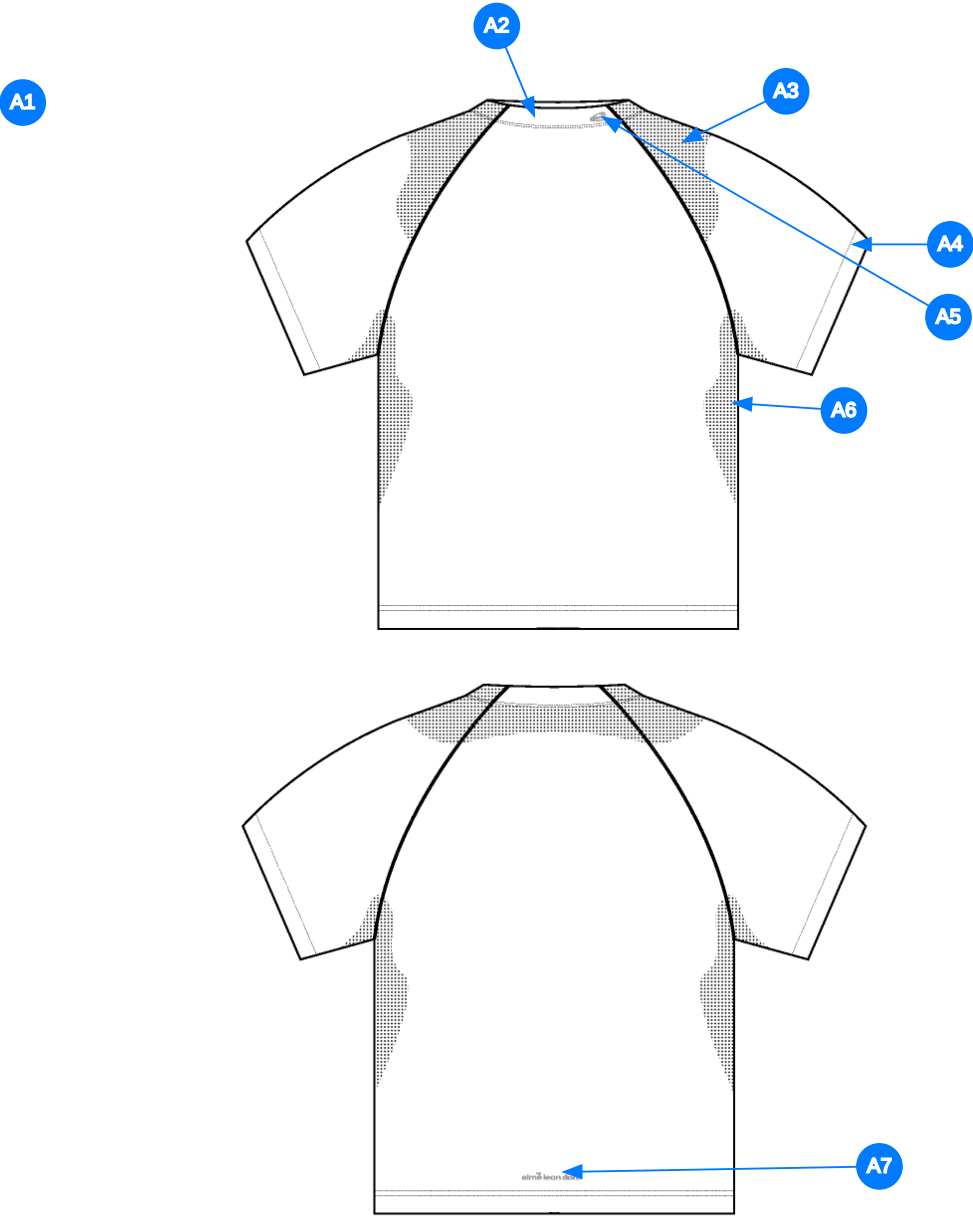
SS Golf Performance Tee



1_B&W-1



2_CLR-1

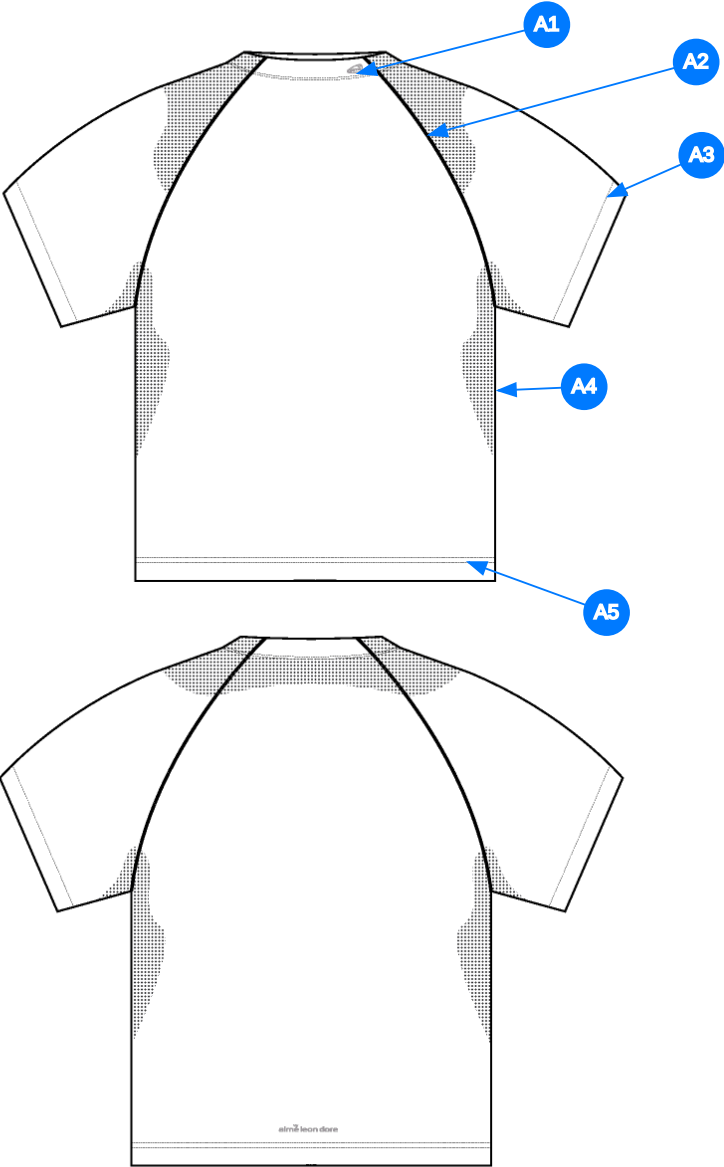


Comments (7)

- A1 FIT: NB 1000 MOCKNECK (NB24KS000)
- A2 SELF FABRIC COLLAR @ NECK TRIM - POLY TAPE ALONG NECK
- A3 LASERCUT PERFORATION @ SLEEVE - SEE FOLLOWING PAGE FOR EXECUTION REFERENCE
- A4 SELF FABRIC @ SLEEVE CUFF
- A5 ARTWORK @ NECK - SEEE SEPARATE FILE FOR ARTWORK DETAILS.
- A6 LASERCUT PERFORATION @ SIDE SEAM
- A7 ARTWORK @ BACK BODY -SEE SEPARATE FILE FOR ARTWORK DETAILS.

- 1. fit: tham khảo mã NB24KS000
- 2. lá cổ bằng vải chính - dây tape dọc viền cổ sau
- 3. lasercut tại tay
- 4. vải chính tại tay
- 5. con ép tại cổ sau
- 6. lasercut tại sườn
- 7. con ép tại thân sau

3_Construction Details-1



4_Stitching Details-1

Comments (5)

- A1 1/4" DN TS @ NECK
- A2 COVERLOCK STITCHING @ RAGLAN SEAM
- A3 1/4" DN TS @ SLEEVE CUFF
- A4 CLEAN SEAM FINISH @ SIDE SEAM
- A5 1/4" DN TS @ BOTTOM HEM

- 1. điều 2 kim 1/4" tại cổ
- 2. vắt sổ tại đường may raglan
- 3. điều 2 kim 1/4" tại lai tay
- 4. may sạch tại đường may sườn
- 5. điều 2 kim 1/4" tại lai áo

Sample Size: M

POINT OF MEASURE	CODE	HOW TO MEASURE	CRITICAL	TYPE	TOLERANCE	M
Front Body Length	S&K01	HPS to bottom edge	true	Full	1/2 in	27 in
Back Body Length	S&K02	CB neck seam to bottom edge	true	Full	1/2 in	26 1/4 in
Front Neck Drop	S&K04	HPS to neck seam	false	Full	1/8 in	3 1/4 in
Back Neck Drop	S&K05	HPS to neck seam	false	Full	1/8 in	3/4 in
Back Neck Width	S&K06	Seam to seam at back neck, at HPS point	false	Full	1/4 in	7 1/2 in
Neck Trim Height	S&K254	Neck Seam to trim edge (before folded)	false	Full	1/8 in	1 3/8 in
Collar Width at Top Edge	S&K228		false	Full	1/8 in	7 3/4 in
Front Raglan Seam Placement at Neck	S&K038	HPS to raglan seam along the neckline	false	Full	1/8 in	2 3/8 in
Back Raglan Seam Placement at Neck	S&K039	HPS to raglan seam along neckline	false	Full	1/8 in	1 1/2 in
Raglan Shoulder Slope	S&K08	9 1/2" From CB	false	Full	1/4 in	2 in
Across Front/Across Back Position from HPS	eos7YR		true	Full	0 in	7 in
Across Front	S&K010	Down from HPS, Seam to seam	false	Half	3/8 in	13 1/4 in
Across Back	S&K011	Down from HPS, Seam to Seam	false	Half	3/8 in	14 in
Chest Width	S&K012	1" Below armhole- edge to edge	true	Half	1/2 in	20 1/4 in
Bottom Opening Width- At Edge	S&K013	At bottom edge	true	Half	1/2 in	20 in
Bottom Hem Height	S&K014	Bottom edge to stitch line or trim seam	false	Full	1/8 in	3/4 in
Sleeve Length from CB Neck	S&K032	3-point measure from CB Neck to shoulder point to sleeve edge	true	Full	1/2 in	17 1/2 in
Armhole Drop	S&K016	Below HPS - measure perpendicular	false	Full	1/4 in	11 3/8 in
Bicep Width	S&K017	1" below armhole- edge to edge	false	Half	1/4 in	8 in
Sleeve Opening Width- At Edge	S&K73	At edge	false	Half	1/4 in	6 1/2 in
Armhole Hem Height	S&K019	Edge to seam- trim width	false	Full	1/8 in	3/4 in
WL Collar Artwork Placement from CF	mKRtpL		true	Full	1/8 in	1 3/4 in
WL Collar Placement Centered on Collar Height	XeLmss		true	Full	1/8 in	0 in
Back Artwork Position Above Hem Edge	S&K381		false	Full	1/8 in	1 1/2 in

Development Notes - Anastasiya Zolotova

CREATED ON APR 16, 2025 7:02 PM

SS26CT033 SS Golf Performance Tee
Date: 4/16/25
Status: 1st Proto
TD: Anastasiya

Fit: Please follow reference pattern to create 1st proto.

fit: tham khảo rập khách gửi làm mẫu proto

COMPONENT		QTY	1.  PROTO
FABRIC			
1	IN DEV CODE: TBD Placement: BODY, NECK TRIM, SLEEVE CUFFS Notes: FOLLOW REFERENCE QUALITY: 190 GSM 85% POLYESTER 15% ELASTANE		- IN DEV Price: 0.00
2	IN DEV CODE: TBD Placement: @ BACK NECK Notes: POLY NECK TAPE		- IN DEV Price: 0.00
3	ARTWORK CODE: AS CORRESPONDING FILE Placement: @ WL NECK Notes: FOLLOW ARTWORK FILE AND POM Supplier: Factory Sourced		- ARTWORK Price: 0.00
4	ARTWORK CODE: AS CORRESPONDING FILE Placement: @ CB HEM Notes: FOLLOW ARTWORK FILE AND POM Supplier: Factory Sourced		- ARTWORK Price: 0.00
5	ARTWORK CODE: AS CORRESPONDING FILE Placement: @ SLEEVE AND SIDE SEAM Notes: LASER CUT PERFORATION, FOLLOW ARTWORK AND POM Supplier: Factory Sourced		- ARTWORK Price: 0.00
LABEL AND TRIM PACKAGE			
Components 5			Total 0.00