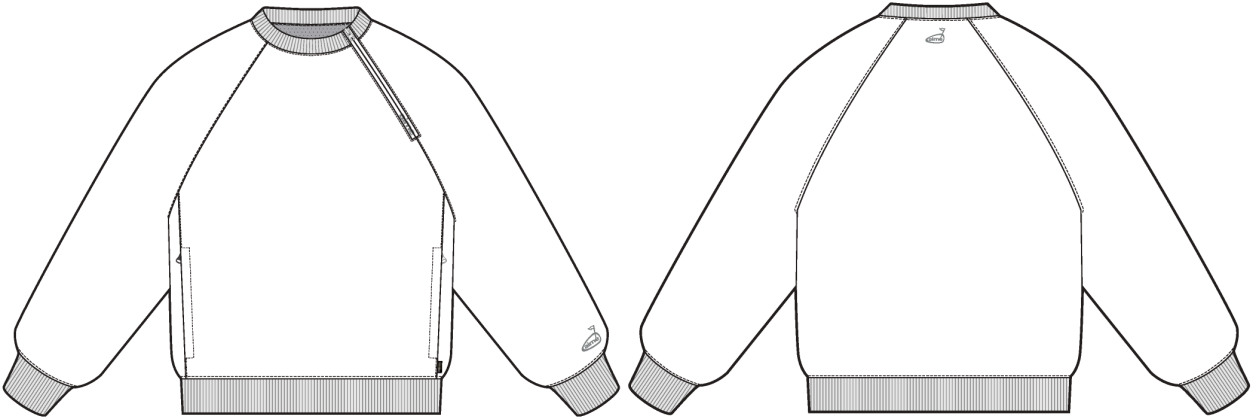
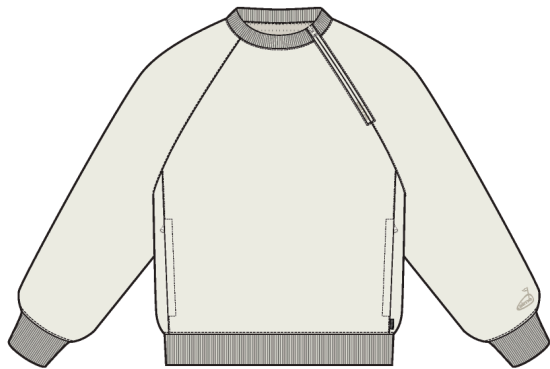


Golf Cordura Popover

Name	Golf Cordura Popover
Style No.	SS26WJ033
Division	Mens
Category	Outerwear
Season	Spring/Summer
Year	2026
Size Scale	M -Sample size <div>XS S M L XL XXL</div>
Designer Name	Quinton
Created by/Author	4/29/2025 Cristina Loukopoulos cristina@aimeleondore.com



01_BLACK AND WHITE SKETCH-1



COCONUT MILK



PINE GROVE

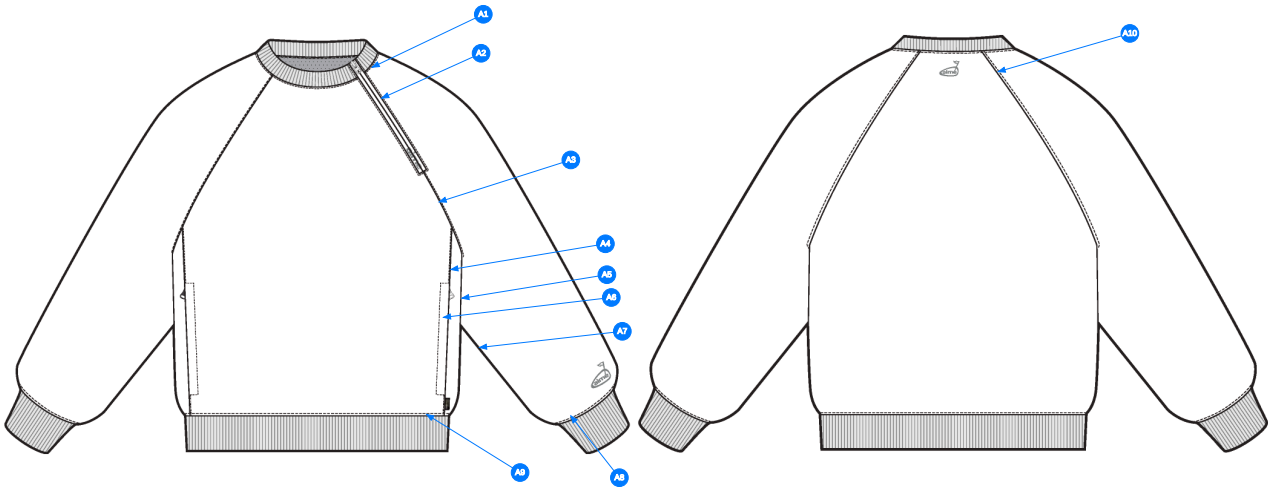


COFFEE BEAN

02_COLOR-1

Comments (10)

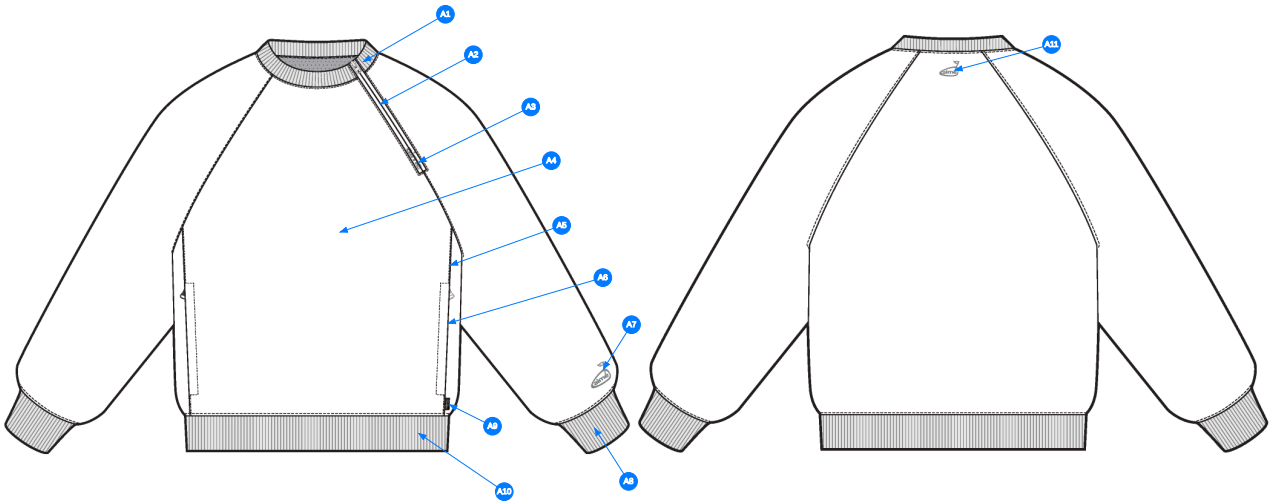
- A1 1/4" SN TS @ RIB COLLAR
- A2 EDGESTITCH @ WL SHOUDLER ZIPPER
- A3 1/4" SN TS @ RAGLAN SLEEVES
- A4 EDGESTITCH @ FRONT BODY PANEL SEAM
- A5 1/4" DN TS @ SIDE SEAM
- A6 3/8" SN TS @ ZIPPER HAND POCKETS
- A7 1/4" DN TS @ SLEEVE SEAM
- A8 1/4" SN TS @ SLEEVE HEM
- A9 1/4" SN TS @ BODY HEM
- A10 1/4" SN TS @ BACK RAGLAN SEAMS



04_STITCH DETAIL-1

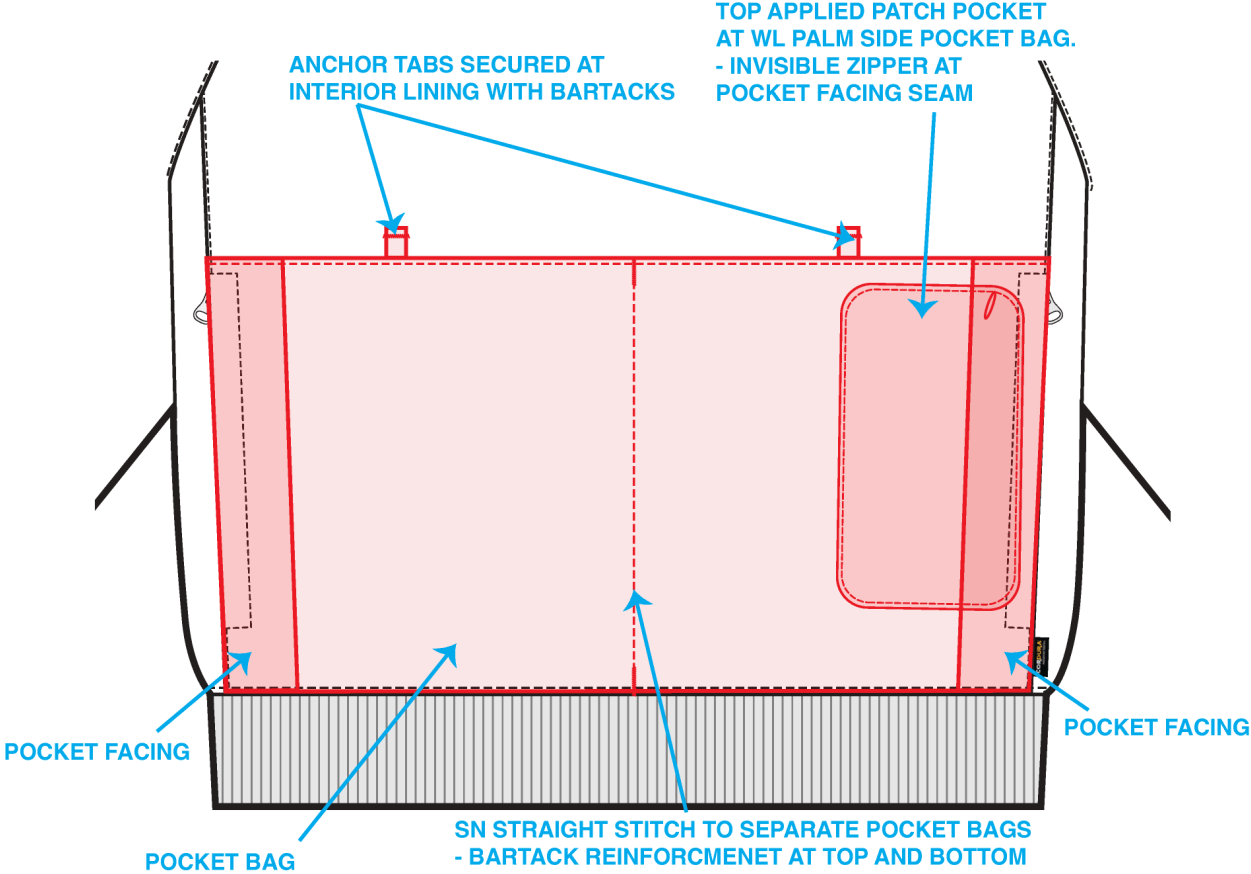
Comments (11)

- A1 RIB COLLAR w/ ZIPPER CLOSURE @ WL FRONT SHOULDER SEAM
- A2 ZIPPER CLOSURE @ WL FRONT SHOULDER SEAM
- A3 PRINTED ARTWORK @ WL SHOULDER ZIPPER - SEE CALLOUT PAGES FOR DETAILS
- A4 GARMENT IS MESH LINED
- A5 FRONT SIDE BODY PANEL CONSTRUCTION
- A6 ON SEAM HAND ZIPPER POCKETS
- A7 DIRECT EMBROIDERY ARTWORK @ WL SLEEVE HEM
- A8 RIB @ SLEEVE CUFF
- A9 CORDURA WOVEN LOOP LABEL @ WL FRONT BODY SEAM
- A10 RIB @ BODY HEM
- A11 DIRECT EMBROIDERY @ CB NECK



05_CONSTRUCTION DETAIL-1

FRONT POCKET DETAIL VIEW



07_DETAIL-1

ARTWORK PAGE

- ARTWORK TECHNIQUE IS DIRECT EMBROIDERY
AT BOTH WL SLEEVE CUFF AND CB NECK



COCONUT MILK COLORWAY



SERAFIL: #380

PINE GROVE COLORWAY



SERAFIL: #7863

COFFEE BEAN COLORWAY



SERAFIL: #7863

08_DETAIL-1

ARTWORK PAGE

- ARTWORK IS TECHNIQUE IS DIGITAL PRINT
- OPTION #1: PRINTED ON REVERSE COIL ZIPPER TAPE
- OPTION #2: PRINTED ON SELF FABRIC DOUBLE WELT



COCONUT MILK COLORWAY



PLAZA TAUPE (16-1105 TCX)

PINE GROVE COLORWAY



COCONUT MILK (11-0608 TCX)

COFFEE BEAN COLORWAY



COCONUT MILK (11-0608 TCX)

09_DETAIL-1

RIB COLLAR ARTWORK
- ARTWORK IS NOT SHOWN TO SCALE BELOW



COCONUT MILK
COLORWAY



RIB COLORS

BASE COLOR : COCONUT MILK (11-0608 TCX)

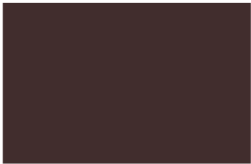
PINE GROVE
COLORWAY



RIB COLORS

BASE COLOR : PINE GROVE (19-5406 TCX)

COFFEE BEAN
COLORWAY



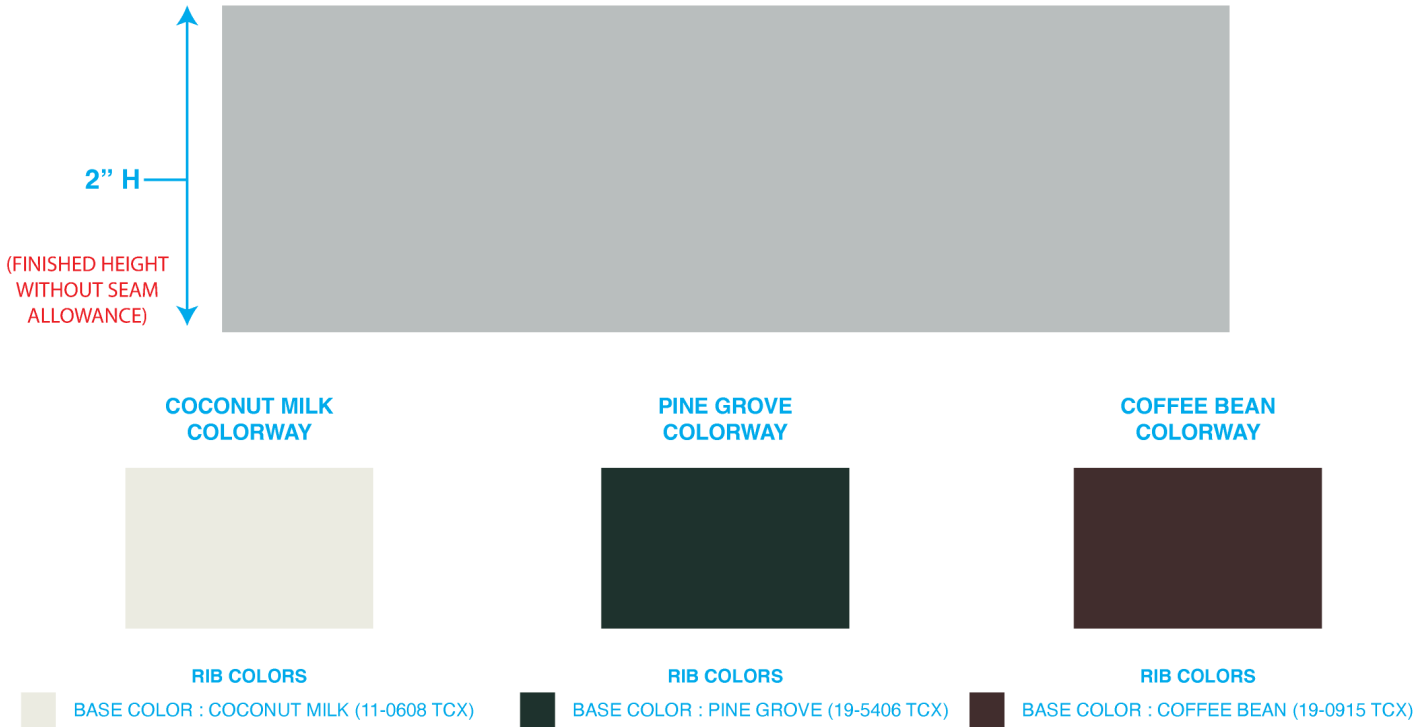
RIB COLORS

BASE COLOR : COFFEE BEAN (19-0915 TCX)

Artboard 22-1

SLEEVE CUFF AND WAISTBAND ARTWORK

- ARTWORK IS NOT SHOWN TO SCALE BELOW



Artboard 23-1

Sample Size: M

POINT OF MEASURE	CODE	HOW TO MEASURE	CRITICAL	TYPE	TOLERANCE	M
FRONT BODY LENGTH	WV001	FROM HPS TO BOTTOM EDGE	true	Full	1/2 in	27 in
BACK BODY LENGTH	WV002	FROM CB NECK SEAM TO BOTTOM EDGE	true	Full	1/2 in	26 1/8 in
FRONT NECK DROP	WV004	FROM HPS LEVEL STRAIGHT DOWN TO CF NECK SEAM	true	Full	1/8 in	4 1/4 in
BACK NECK DROP	WV005	FROM HPS LEVEL STRAIGHT DOWN TO CB NECK SEAM	true	Full	1/8 in	7/8 in
BACK NECK WIDTH	WV006	FROM SEAM TO SEAM AT BACK PANEL	true	Full	1/4 in	7 3/4 in
FRONT RAGLAN SEAM FORWARD FROM HPS	WV		false	Full	1/8 in	2 1/2 in
BACK RAGLAN SEAM BACKWARD FROM HPS	WV		false	Full	1/8 in	1 3/4 in
SHOULDER SLOPE - RAGLAN	WVRAG	MEAS. AT IMAG. SHOUDLER POINT 9 1/2" FROM CB, FTY GRADE POS. FOR ALL OTHER SIZES	true	Full	1/8 in	2 1/4 in
ACROSS FRONT	WV010	MEASURE FROM A/H SEAM TO SEAM, 7" FROM HPS FOR M SIZE, FACTORY GRADE POS. FOR ALL OTHER SIZES	true	Full	1/4 in	14 1/4 in
ACROSS BACK	WV011	MEASURE FROM A/H SEAM TO SEAM, 7" FROM HPS FOR M SIZE, FACTORY GRADE POS. FOR ALL OTHER SIZES	true	Full	1/4 in	16 3/8 in
CHEST CIRCUMFERENCE	WV012	MEASURE 1" BELOW ARMHOLE	true	Full	1/2 in	49 1/2 in
BOTTOM OPENING CIRCUMFERENCE, STRETCHED	WV014	MEASURE AT BOTTOM HEM SEAM, STRETCHED	true	Full	1/2 in	45 in
BOTTOM OPENING CIRCUMFERENCE, RELAXED	WV015	MEASURE AT BOTTOM EDGE, RELAXED	true	Full	1/2 in	36 1/2 in
BOTTOM HEM HEIGHT	WV016		false	Full	1/8 in	2 in
ARMHOLE DROP	WV017	FROM HPS LEVEL STRAIGHT DOWN TO UNDERARM SEAM	true	Full	1/4 in	12 1/2 in
BICEP CIRCUMFERENCE	WV018	MEASURE AT 1" BELOW ARMHOLE	true	Full	1/4 in	19 1/2 in
FOREARM CIRCUMFERENCE	WV019	MEASURE AT 9" ABOVE SLEEVE HEM EDGE	true	Full	1/4 in	15 3/4 in
SLEEVE OPENING CIRCUMFERENCE, STRETCHED	WV020-1	MEASURE AT SLEEVE EDGE	true	Full	1/4 in	12 1/2 in
KNIT RIB SLEEVE OPENING CIRCUMFERENCE, RELAXED	WV020		true	Full	1/4 in	8 in
SLEEVE HEM HEIGHT	WV021		false	Full	1/8 in	2 in
SLEEVE LENGTH	WV026	3PT MEAS. FROM CB NECK, ARMHOLE TO SLEEVE HEM EDGE	true	Full	1/2 in	35 in
COLLAR RIB WIDTH	WV		false	Full	1/8 in	1 in
FRONT POCKET PLACEMENT UP FROM BOTTOM HEM SEAM	JC015		false	Full	1/8 in	2 in
FRONT POCKET ZIPPER LENGTH	WV		false	Full	1/4 in	7 in
SHOULDER ZIPPER LENGTH	AFC3N9		false	Full	1/4 in	6 in
W/L INTERIOR POCKET BAG ZIPPER LENGTH	auBgn0		false	Full	1/4 in	5 1/2 in
BACK ARTWORK BELOW CB NECK SEAM	l4bv0s		false	Full	1/16 in	0 in
W/L SLEEVE ARTWORK ABOVE SLEEVE HEM SEAM	jbLwWu		false	Full	1/16 in	0 in

Development - Hyeyoung Cho

CREATED ON APR 21, 2025 3:17 PM

Date : 4/21/25

TD : Hyeyoung Cho

Status : Submit 1st Proto

Development notes :

1. Please use the S25WJ033 pattern saved in the folder for overall body silhouette with below adjustments.
2. Shift the side seam forward by 1 1/2", and add on-seam pockets.
3. Change the neck shape following sketch.
4. Change to rib hem at bottom opening.



Fit reference.jpg

Golf Cordura Popover - Style #SS26WJ033

Mens, Outerwear, Spring/Summer, 2026

BOM > Set 1 of 1

04-29-2025

COMPONENT		QTY	1. NO COLOR ASSIGNED
1	1044308 CODE: 1044308 Placement: BODY / SLEEVES / SIDE BODY PANEL Supplier: Takisada Width: 145cm Weight: 117g/sqm Country of Origin: CHINA		Not used
2	IN DEV CODE: TBD Placement: LINING Notes: 100% POLYESTER MESH QUALITY, AROUND 60 GSM; PLEASE SEND LOACL OPTIONS FOR APPROVAL		Not used
3	YKK COIL CLOSED END ZIPPER CODE: TBD Placement: @ W/L FRONT SHOULDER SEAM Notes: *REVERSE* Supplier: YKK Country of Origin: China		Not used SIZE: 5GG
4	YKK Zipper Tape CODE: YKK Placement: @ W/L FRONT SHOULDER SEAM ZIPPER		Not used
5	YKK DS6 Zipper Slider CODE: DS6 Placement: @ W/L FRONT SHOULDER SEAM ZIPPER Supplier: YKK		Not used
6	YKK COIL CLOSED END ZIPPER CODE: TBD Placement: 1 @ EACH HAND POCKET Notes: *REVERSE* Supplier: YKK Country of Origin: China		Not used SIZE: 5GG
7	YKK Zipper Tape CODE: YKK Placement: 1 @ EACH HAND POCKET ZIPPER		Not used
8	YKK Branded Zipper Slider CODE: DA8AED01 Placement: 1 @ EACH HAND POCKET ZIPPER Supplier: YKK Country of Origin: CHINA		Not used
9	CORDURA LOOP LABEL CODE: CORDURA LOOP LABEL Placement: @ W/L FRONT BODY PANEL SEAM		Not used
10	IN DEV CODE: TBD Placement: @ HEM / SLEEVE CUFFS Notes: TBD 1X1 FLAT KNIT TUBULAR RIB; PLEASE FOLLOW REFERENCE AND SEND SIMILAR OPTIONS FOR APPROVAL		Not used
11	THREAD CODE: THREAD Placement: @ ENTIRE BODY Notes: 100% POLYESTER TEX SIZE:T-60 SPI: 8-10 Supplier: Factory Sourced		Not used
12	ARTWORK CODE: EMBROIDERY Placement: @ W/L HEM Notes: TBD A/W Supplier: Factory Sourced		Not used
13	ARTWORK CODE: AS CORRESPONDING FILE Placement: @ W/L ZIPPER Notes: TBD A/W Supplier: Factory Sourced		Not used
Components 13			Total 0.00