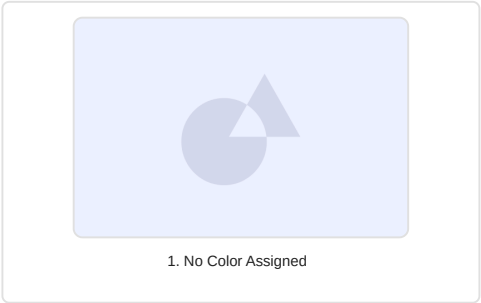
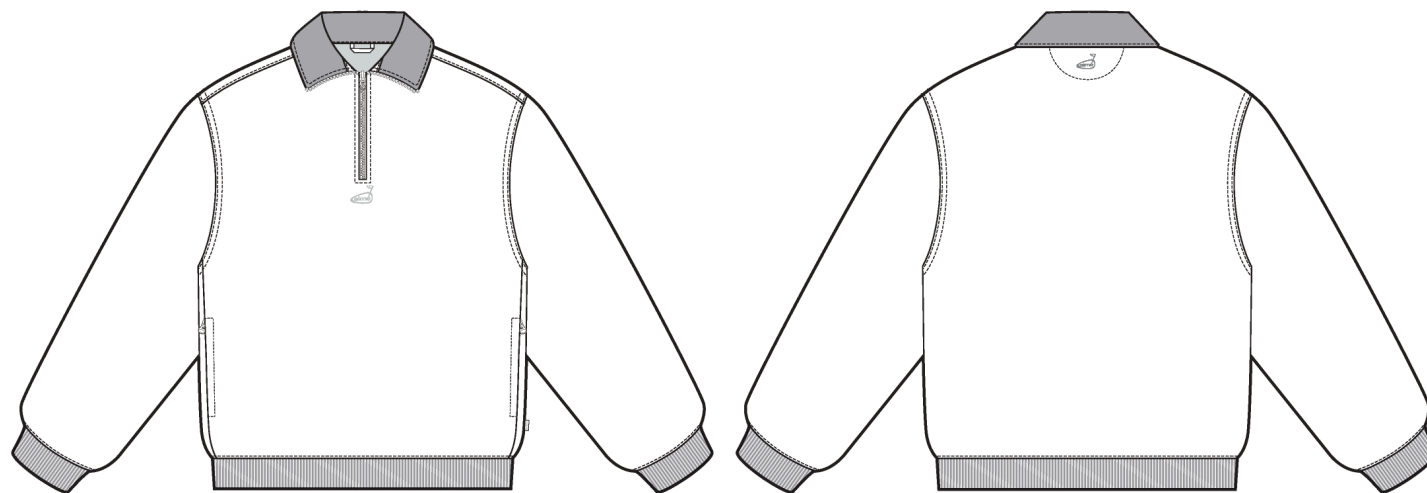


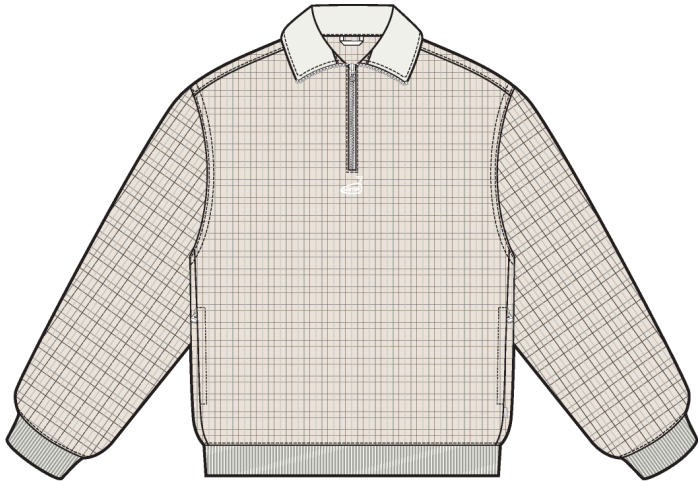
Golf Gore-Tex Half Zip Pullover

Name	Golf Gore-Tex Half Zip Pullover
Style No.	SS26WJ034
Division	Mens
Category	Outerwear
Season	Spring/Summer
Year	2026
Size Scale	M -Sample size <div>XS S M L XL XXL</div>
Designer Name	Quinton
Created by/Author	4/22/2025 Cristina Loukopoulos cristina@aimeleondore.com





01_BLACK AND WHITE SKETCH-1



COCONUT MILK /
TATTERSAIL PRINT



JET BLACK /
TATTERSAIL PRINT

02_COLOR-1

FABRIC / TRIM LEGEND:

FABRIC LEGEND:

PRINTED SELF FABRIC: AT BODY / SLEEVES /
INTERIOR HALF MOON
MILL: GORETEX
ARTICLE NUMBER: bnrEL NINO-PG 3L
QUANTITY: FTY TO ADVISE

CONTRAST MESH LINING: AT INTERIOR BODY
MILL: LEVER
ARTICLE NUMBER: 1KAK001220002
QUANTITY: FTY TO ADVISE

CONTRAST COLOR SELF FABRIC: AT COLLAR / UNDERCOLLAR /
FRONT POCKET BAG / INTERIOR LOCKER LOOP
MILL: GORETEX
ARTICLE NUMBER: bnrEL NINO-PG 3L
QUANTITY: FTY TO ADVISE

TRIM LEGEND:

CF ZIPPER TAPE:
VENDOR: YKK
ARTICLE NUMBER: YKK - COLOR TBD
QUANTITY: 01

WINDSTOPPER WOVEN LOOP LABEL: AT WL BACK WAISTBAND
VENDOR: GORE-TEX
ARTICLE NUMBER: TBD
QUANTITY: 01

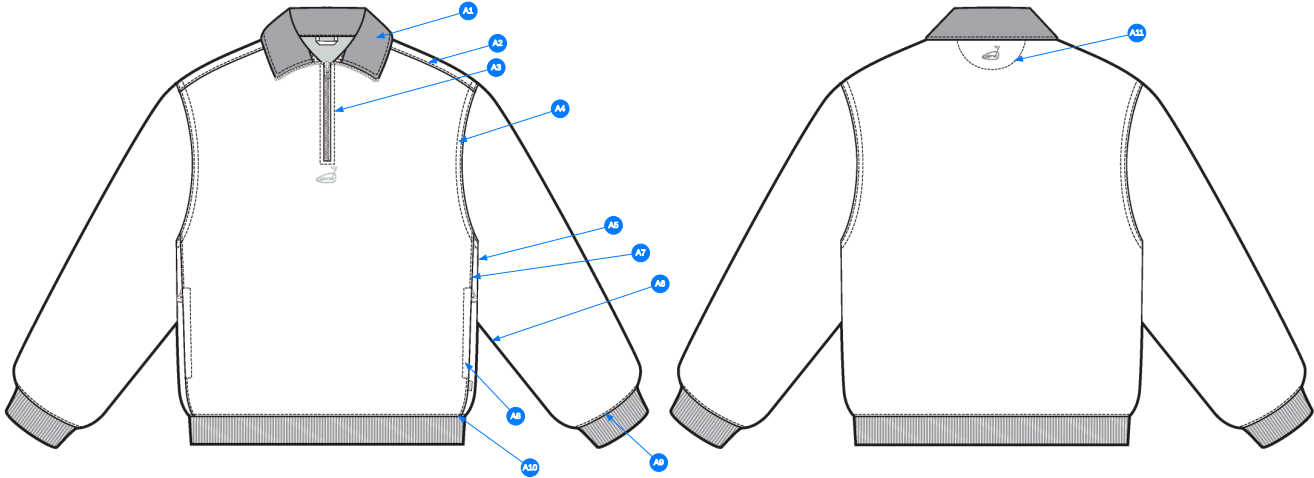
CF ZIPPER SLIDER: AT CF
VENDOR: YKK
ARTICLE NUMBER: YKK #5 DS6
QUANTITY: 01

DIRECT EMBROIDERY ARTWORK: AT CF / AT CB NECK
VENDOR: TBD
ARTICLE NUMBER: TBD
QUANTITY: 01

CF ZIPPER TEETH: AT CF
VENDOR: YKK
ARTICLE NUMBER: YKK #5 COIL CLOSED END ZIPPER
QUANTITY: 01

1X1 FLAT KNIT TUBULAR RIB: AT EACH SLEEVE HEM / AT BODY HEM
VENDOR: FACTORY SOURCED
ARTICLE NUMBER: PLEASE REFERENCE FW25WJ007 RIB QUALITY
QUANTITY: FACTORY TO ADVISE

POLY THREAD: AT ENTIRE BODY
TEX SIZE: T-40
SPI: 8-10



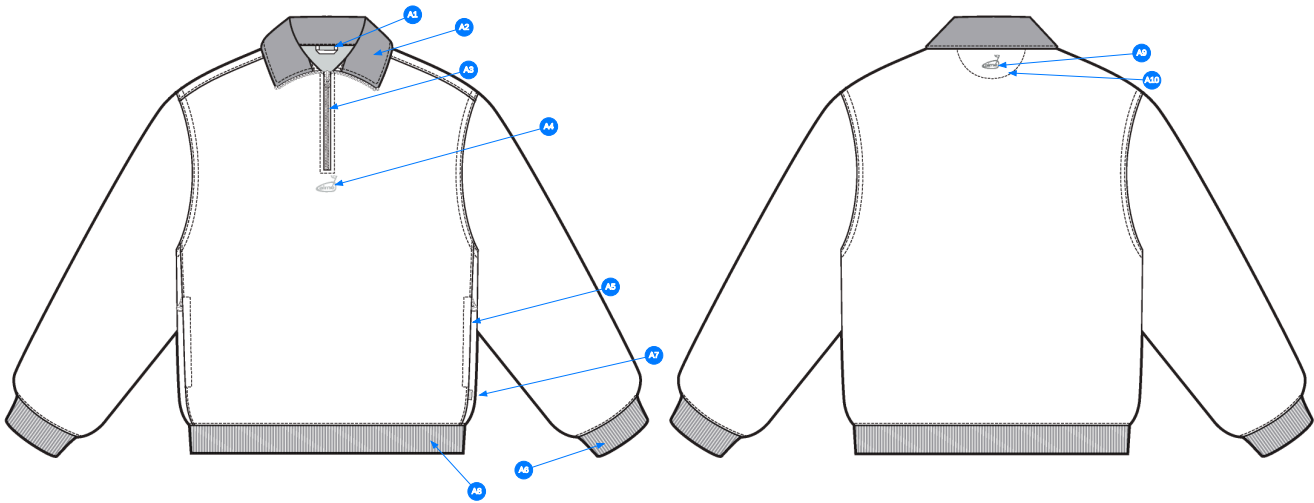
Comments (11)

- A1 1/4" SN TS @ COLLAR
- A2 EDGESTITCH @ SHOULDER SEAM
- A3 1/4" SN TS @ CF ZIPPER
- A4 1/4" DN TS @ ARMHOLE
- A5 1/4" DN TS @ SIDE SEAM
- A6 1/4" DN TS @ SLEEVE SEAM
- A7 CLEAN FINISH @ FRONT BODY SEAM
- A8 3/8" SN TS @ ZIPPER POCKETS
- A9 1/4" SN TS @ SLEEVE HEM
- A10 1/4" SN TS @ BODY HEM
- A11 SINGLE NEEDLE TS @ CB HALF MOON

04_STITCH DETAIL-1

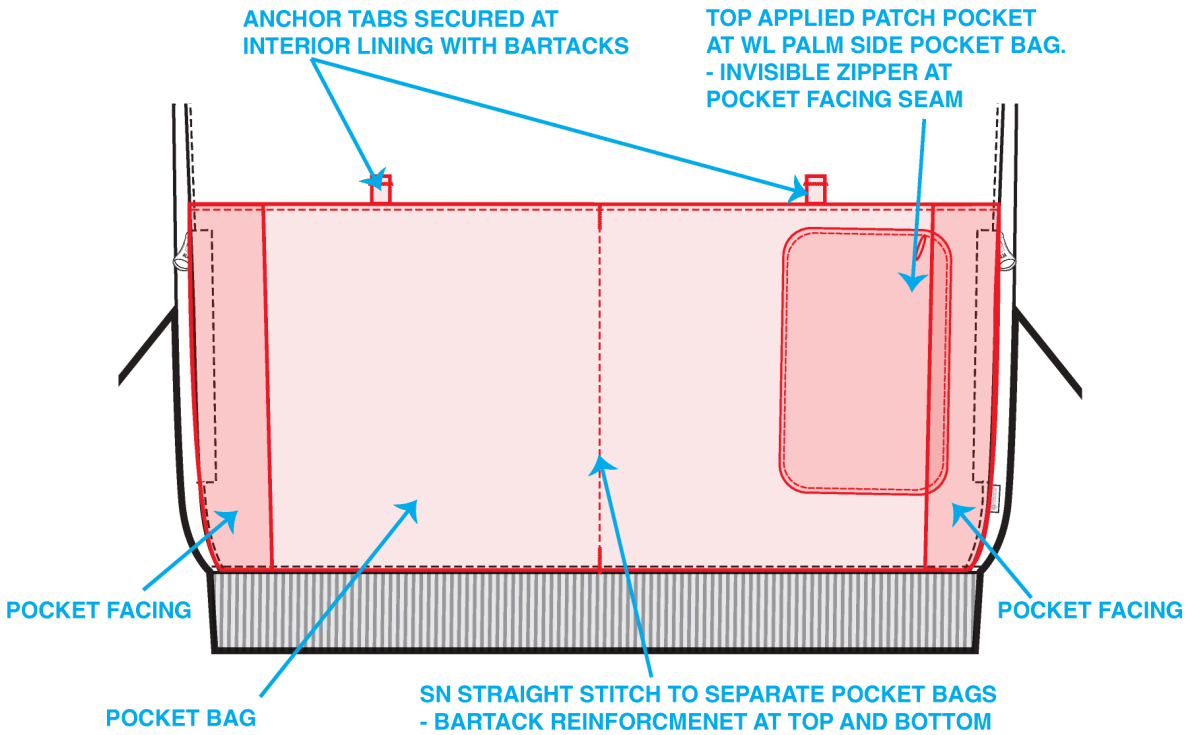
Comments (10)

- A1 LOCKER LOOP @ INTERIOR CB NECK
- A2 COLLAR CONSTRUCTION w/ CONTRAST SELF FABRIC AT TOP COLLAR AND SELF COLOR FABRIC AT UNDERCOLLAR - SEE CALLOUT PAGE FOR DETAILS
- A3 ZIPPER CLOSURE @ CF
- A4 DIRECT EMBROIDERY ARTWORK - SEE CALLOUT PAGE FOR DETAILS
- A5 ZIPPER POCKETS @ SIDE SEAMS
- A6 RIB CUFF @ SLEEVE HEM
- A7 WINDSTOPPER LOOP LABEL @ WL SIDE SEAM
- A8 RIB @ BODY HEM
- A9 DIRECT EMBROIDERY ARTWORK @ CB NECK
- A10 INTERIOR HALF MOON @ CB NECK



05_CONSTRUCTION DETAIL-1

FRONT POCKET DETAIL VIEW



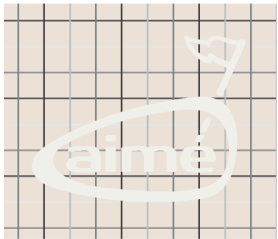
Artboard 1 copy 10-1

ARTWORK PAGE

- ARTWORK IS TECHNIQUE IS DIRECT EMBROIDERY

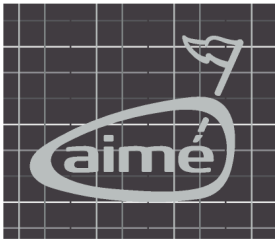


COCONUT MILK / TATTERSAIL COLORWAY



SERAFIL: #TBD

JET BLACK / TATTERSAIL COLORWAY



SERAFIL: #TBD

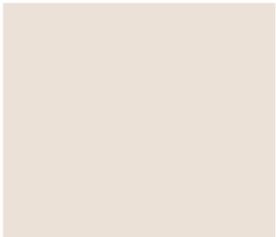
08_DETAIL-1

SLEEVE CUFF AND WAISTBAND ARTWORK

- ARTWORK IS NOT SHOWN TO SCALE BELOW



COCONUT MILK / TATTERSAIL
COLORWAY



RIB COLORS



BASE COLOR : COCONUT MILK (11-0608 TCX)

JET BLACK / TATTERSAIL
COLORWAY



RIB COLORS



BASE COLOR : JET BLACK (19-0303 TCX)

Artboard 23-1

Sample Size: M

POINT OF MEASURE	CODE	HOW TO MEASURE	CRITICAL	TYPE	TOLERANCE	M
FRONT BODY LENGTH	WV001	FROM HPS TO BOTTOM EDGE	true	Full	1/2 in	27 in
BACK BODY LENGTH	WV002	FROM CB NECK SEAM TO BOTTOM EDGE	true	Full	1/2 in	26 1/8 in
CF ZIPPER LENGTH	WV003	FROM ZIPPER TIP TO TIP	true	Full	1/4 in	7 1/2 in
FRONT NECK DROP	WV004	FROM HPS LEVEL STRAIGHT DOWN TO CF NECK SEAM	true	Full	1/8 in	4 in
BACK NECK DROP	WV005	FROM HPS LEVEL STRAIGHT DOWN TO CB NECK SEAM	true	Full	1/8 in	3/4 in
BACK NECK WIDTH	WV006	FROM SEAM TO SEAM AT BACK PANEL	true	Full	1/4 in	6 3/4 in
SHOULDER SEAM FORWARD	WV007	FROM HPS TO SHOUDLER SEAM AT NECK	false	Full	1/8 in	1 in
SHOULDER SLOPE	WV008	FROM HPS LEVEL STRAIGHT DOWN TO TOP OF ARMHOLE SM	true	Full	1/8 in	2 1/4 in
ACROSS SHOULDER	WV009	FROM ARMHOLE SEAM TO SEAM AT BACK PANEL	true	Full	1/4 in	19 in
ACROSS FRONT	WV010	MEASURE FROM A/H SEAM TO SEAM, 7" FROM HPS FOR M SIZE, FACTORY GRADE POS. FOR ALL OTHER SIZES	true	Full	1/4 in	17 in
ACROSS BACK	WV011	MEASURE FROM A/H SEAM TO SEAM, 7" FROM HPS FOR M SIZE, FACTORY GRADE POS. FOR ALL OTHER SIZES	true	Full	1/4 in	18 1/2 in
CHEST CIRCUMFERENCE	WV012	MEASURE 1" BELOW ARMHOLE	true	Full	1/2 in	49 1/2 in
BOTTOM OPENING CIRCUMFERENCE, STRETCHED	WV014	MEASURE AT BOTTOM HEM SEAM, STRETCHED	true	Full	1/2 in	45 in
BOTTOM OPENING CIRCUMFERENCE, RELAXED	WV015	MEASURE AT BOTTOM EDGE, RELAXED	true	Full	1/2 in	36 1/2 in
BOTTOM HEM HEIGHT	WV016		false	Full	1/8 in	2 in
ARMHOLE DROP	WV017	FROM HPS LEVEL STRAIGHT DOWN TO UNDERARM SEAM	true	Full	1/4 in	12 1/2 in
BICEP CIRCUMFERENCE	WV018	MEASURE AT 1" BELOW ARMHOLE	true	Full	1/4 in	19 in
FOREARM CIRCUMFERENCE	WV019	MEASURE AT 9" ABOVE SLEEVE HEM EDGE	true	Full	1/4 in	16 in
SLEEVE OPENING CIRCUMFERENCE, STRETCHED	WV020-1	MEASURE AT SLEEVE EDGE	true	Full	1/4 in	12 1/2 in
SLEEVE OPENING CIRCUMFERENCE, RELAXED	WV020		true	Full	1/4 in	8 in
SLEEVE HEM HEIGHT	WV021		false	Full	1/8 in	2 in
SLEEVE LENGTH	WV026	3PT MEAS. FROM CB NECK, ARMHOLE TO SLEEVE HEM EDGE	true	Full	1/2 in	35 in
COLLAR POINT	WV022		false	Full	1/8 in	3 1/2 in
COLLAR HEIGHT AT CB	vMNYhn		false	Full	1/8 in	3 3/4 in
COLLAR LENGTH ALONG OUTER EDGE	WV025	MEASURE AT UNDER COLLAR SIDE	false	Full	1/4 in	19 in
FRONT POCKET PLACEMENT UP FROM BOTTOM HEM SEAM	JC015		false	Full	1/8 in	3 in
FRONT POCKET ZIPPER LENGTH	WV		false	Full	1/4 in	7 in
CB ARTWORK BELOW CB NECK SEAM	l4bv0s		false	Full	1/16 in	0 in
CF ARTWORK BELOW CF ZIPPER END	jblwWu		false	Full	1/16 in	0 in

Development - Hyeyoung Cho

CREATED ON APR 21, 2025 4:03 PM

Date : 4/21/25

TD : Hyeyoung Cho

Status : Submit 1st Proto

Development notes :

1. Please use the S25WJ033 pattern saved in the folder for overall body silhouette with below adjustments.
2. Change to set in sleeves.
3. Shift the side seam forward by 1 1/2", and add on-seam pockets.
4. Adjust the neck and collar as spec.
5. Change to rib bottom hem.

Golf Gore-Tex Half Zip Pullover - Style #SS26WJ034

Mens, Outerwear, Spring/Summer, 2026

BOM > Set 1 of 1

04-22-2025

COMPONENT		QTY	1. NO COLOR ASSIGNED
1	BnrEL NINO-PG 3L CODE: bnrEL NINO-PG 3L Placement: BODY / SLEEVES / INTERIOR HALF MOON Supplier: GORE-TEX Country of Origin: CHINA		Not used
2	BnrEL NINO-PG 3L CODE: bnrEL NINO-PG 3L Placement: COLLAR / UNDERCOLLAR / FRONT POCKET BAGS / INTERIOR LOCKER LOOP Supplier: GORE-TEX Country of Origin: CHINA		Not used
3	IN DEV CODE: TBD Placement: LINING Notes: TBD 100% POLY MESH, AROUND 60GSM; PLEASE SEND LOCAL OPTIONS FOR APPROVAL		Not used
4	YKK COIL CLOSED END ZIPPER CODE: TBD Placement: CF Supplier: YKK Country of Origin: China		Not used SIZE: 5GG
5	YKK Zipper Tape CODE: YKK Placement: CF ZIPPER		Not used
6	YKK DS6 Zipper Slider CODE: DS6 Placement: CF ZIPPER Supplier: YKK		Not used
7	IN DEV CODE: TBD Placement: @ HEM / SLEEVE CUFFS Notes: 1X1 FLAT KNIT TUBULAR RIB; FOLLOW REFERENCE PHOTO AND SEND SIMILAR OPTIONS FOR APPROVAL		Not used
8	THREAD CODE: THREAD Placement: @ ENTIRE BODY Notes: 100% POLY TEX SIZE: T-40 SPI: 8-10 Supplier: Factory Sourced		Not used
9	Gore-Tex Windstopper Woven Label CODE: ELU4221L29 Placement: @ W/L BACK WB Supplier: GORE-TEX		Not used
10	ARTWORK CODE: EMBROIDERY Placement: @ CF Notes: TBD A/W Supplier: Factory Sourced		Not used
11	ARTWORK CODE: EMBROIDERY Placement: @CB Notes: TBD A/W Supplier: Factory Sourced		Not used
Components 11			Total 0.00