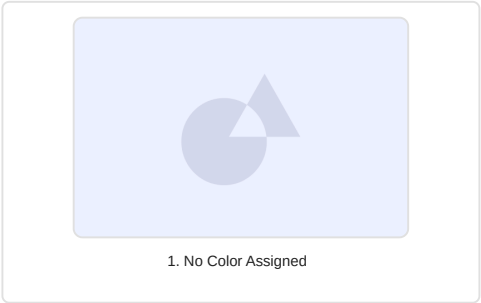
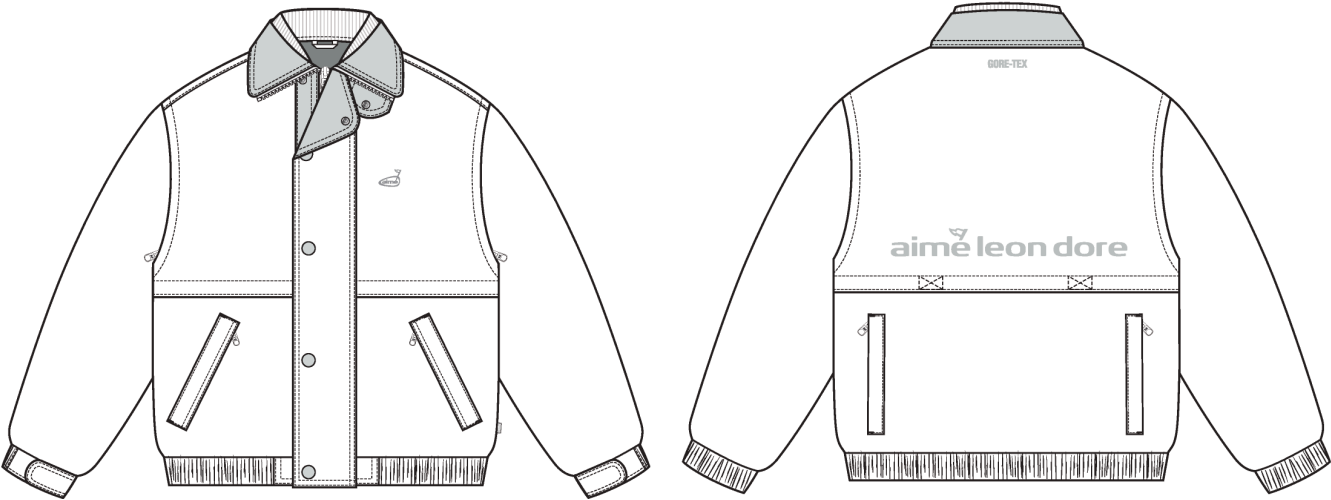


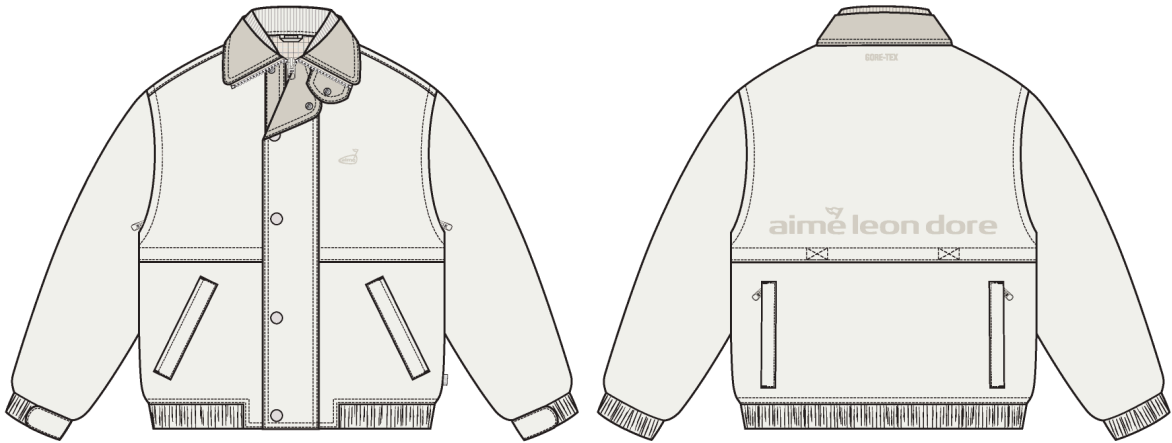
Golf Windstopper Convertible Jacket

Name	Golf Windstopper Convertible Jacket
Style No.	SS26WJ035
Division	Mens
Category	Outerwear
Season	Spring/Summer
Year	2026
Size Scale	<b>M</b> -Sample size
	<div>XS S M L XL XXL</div>
Style Status	Development
Designer Name	Quinton
Created by/Author	5/5/2025 Cristina Loukopoulos cristina@aimeleondore.com





01\_BLACK AND WHITE SKETCH-1



COCONUT MILK



PINE GROVE

02\_COLOR-1

FABRIC / TRIM LEGEND:

FABRIC LEGEND:

**SELF FABRIC:** AT BODY / UNDERCOLLAR / COLLAR  
TAB / CF PLACKET / SLEEVE CUFF / SLEEVE TAB / FRONT  
POCKET WELTS / BACK POCKET WELTS / WAISTBAND  
**MILL:** GORETEX  
**ARTICLE NUMBER:** bnrEL NINO-PG 3L  
**QUANTITY:** FTY TO ADVISE

**CONTRAST COLOR SELF FABRIC:** AT TOP COLLAR /  
COLLAR PANEL / COLLAR TAB FACING / CF PLACKET FACING /  
CF APPLIED PANEL / SLEEVE TAB FACINGS / AT INTERIOR BACK YOKE  
SEAM / BINDING OF INTERIOR DROP-IN POCKETS /  
INTERIOR MAIN LABEL ANCHOR PATCH / INTERIOR CB LOCKER LOOP  
**MILL:** GORETEX  
**ARTICLE NUMBER:** bnrEL NINO-PG 3L  
**QUANTITY:** FTY TO ADVISE

TRIM LEGEND:

**RIB COLLAR:** AT SECONDARY COLLAR  
**VENDOR:** LEVER  
**ARTICLE NUMBER:** H2053H - 1X1 FLAT KNIT RIB  
**QUANTITY:** FTY TO ADVISE

**ZIPPER TAPE:** AT CF / FRONT HAND POCKETS / BACK HAND  
POCKETS / ARMHOLE  
**VENDOR:** YKK  
**ARTICLE NUMBER:** 5G AQUAGUARD VISLON PU 2WO LEFT INSERT  
**QUANTITY:** 07

**ZIPPER TEETH:** AT CF / FRONT HAND POCKETS / BACK HAND  
POCKETS / ARMHOLE  
**VENDOR:** YKK  
**ARTICLE NUMBER:** 5G AQUAGUARD VISLON PU 2WO LEFT INSERT  
**QUANTITY:** 07

**ZIPPER HEADS:** AT CHEST / ARMHOLE / HAND POCKETS /  
BACK POCKETS  
**VENDOR:** YKK  
**ARTICLE NUMBER:** TBD - COMPATIBLE ZIPPER HEAD FOR  
5G AQUAGUARD VISLON PU 2WO LEFT INSERT  
**QUANTITY:** 03

**15MM WIDTH WATERPROOF SEAM TAPE:**  
**VENDOR:** TBD  
**ARTICLE NUMBER:** TBD  
**QUANTITY:** FTY TO ADVISE

**BONDING FILM:**  
**VENDOR:** TBD  
**ARTICLE NUMBER:** TBD  
**QUANTITY:** FTY TO ADVISE

**CONTRAST MESH LINING:** AT INTERIOR FRONT AND  
BACK BODY  
**MILL:** LEVER  
**ARTICLE NUMBER:** TBD  
**QUANTITY:** FTY TO ADVISE

**CONTRAST SLEEVE LINING:** AT INTERIOR SLEEVES  
**MILL:** LEVER  
**ARTICLE NUMBER:** SATIN BEMBERG LINING - TBD  
**QUANTITY:** FTY TO ADVISE

**CONTRAST PRINTED LINING:** AT INTERIOR BACK YOKE / FRONT  
POCKET BAGS / BACK POCKET BAGS  
**MILL:** LEVER  
**ARTICLE NUMBER:** HJ-N043  
**QUANTITY:** FTY TO ADVISE

**CF COLLAR TAB / CF PLACKET SNAPS:**  
**VENDOR:** LEVER  
**ARTICLE NUMBER:** TBD - 28L  
**QUANTITY:** 06

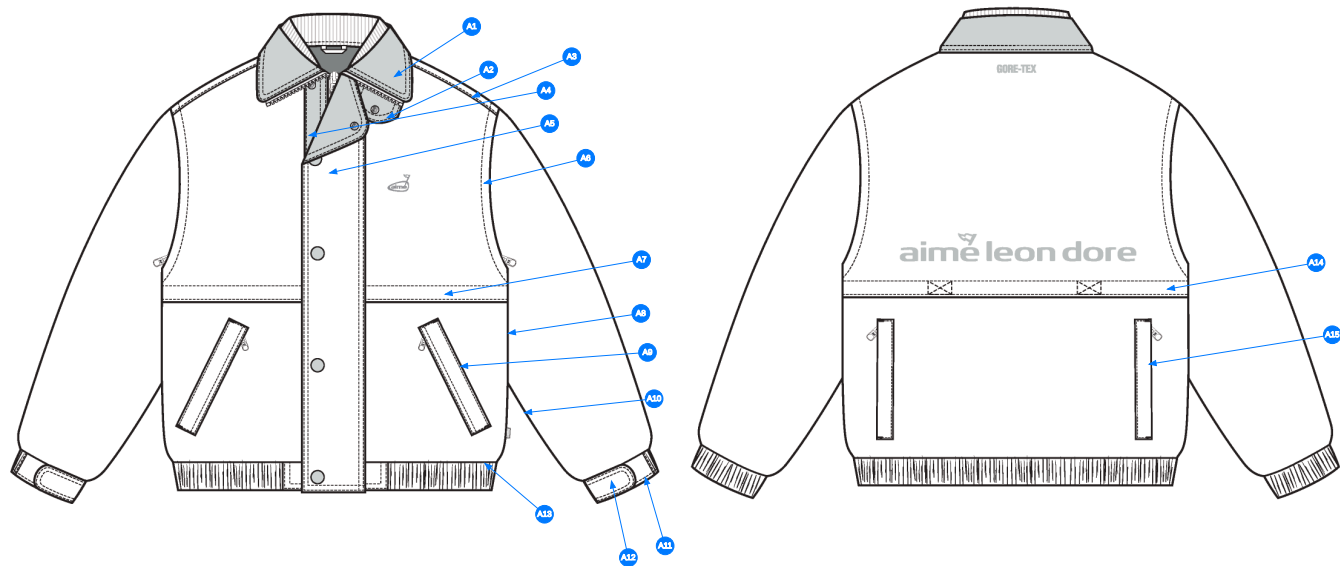
**SLEEVE CUFF ELASTIC:**  
**VENDOR:** LEVER  
**ARTICLE NUMBER:** TBD - COMPARABLE SIZE TO CUFF HEIGHT  
**QUANTITY:** FTY TO ADVISE

**WAISTBAND ELASTIC:**  
**VENDOR:** LEVER  
**ARTICLE NUMBER:** TBD - COMPARABLE SIZE TO HEM HEIGHT  
**QUANTITY:** FTY TO ADVISE

**VELCRO:** AT SLEEVE TAB AND SLEEVE CUFF  
**VENDOR:** LEVER  
**ARTICLE NUMBER:** 3VLC003240009 - VELCRO HOOK SIDE L-3A  
**QUANTITY:** FTY TO ADVISE

**GORE-TEX WOVEN LOOP LABEL:** AT WL SIDE SEAM  
**VENDOR:** LEVER  
**ARTICLE NUMBER:** ELU3201L29  
**QUANTITY:** 01

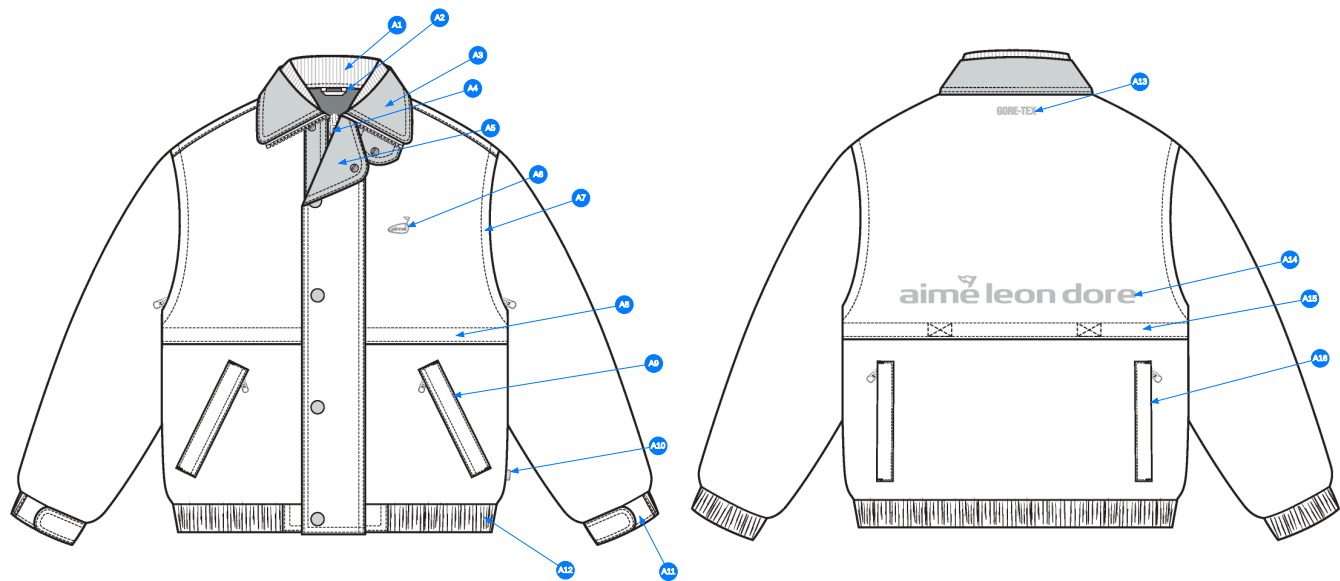
**POLY THREAD:** AT ENTIRE BODY  
**TEX SIZE:** T-60  
**SPI:** 8-10



Comments (15)

- A1 1/4" DN TS @ COLLAR
- A2 1/4" DN TS @ COLLAR TAB
- A3 1/4" DN TS @ SHOULDER SEAMS
- A4 SEE CALLOUT PAGE FOR DETAILS
- A5 1/4" DN TS @ CF PLACKET
- A6 3/4" SN TS @ ARMHOLE
- A7 1" SN TS @ FRONT FLANGE AND 1/8" SN TS @ FLANGE EDGE
- A8 1/4" DN TS @ SIDE SEAM
- A9 SEE CALLOUT PAGE FOR STITCHING DETAILS
- A10 1/4" DN TS @ SLEEVE SEAM
- A11 1/8" SN TS @ SLEEVE CUFF BOTTOM EDGE AND CLEAN FINISH @ TOP EDGE
- A12 SEE CALLOUT PAGE FOR DETAILS
- A13 CLEAN FINISH @ ELASTICATED WAISTBAND
- A14 1" SN TS @ BACK FLANGE AND 1/8' SN TS @ FLANGE EDGE - SEE CALLOUT PAGE FOR DETAILS
- A15 SEE CALLOUT PAGE FOR DETAILS

04\_STITCH DETAIL-1

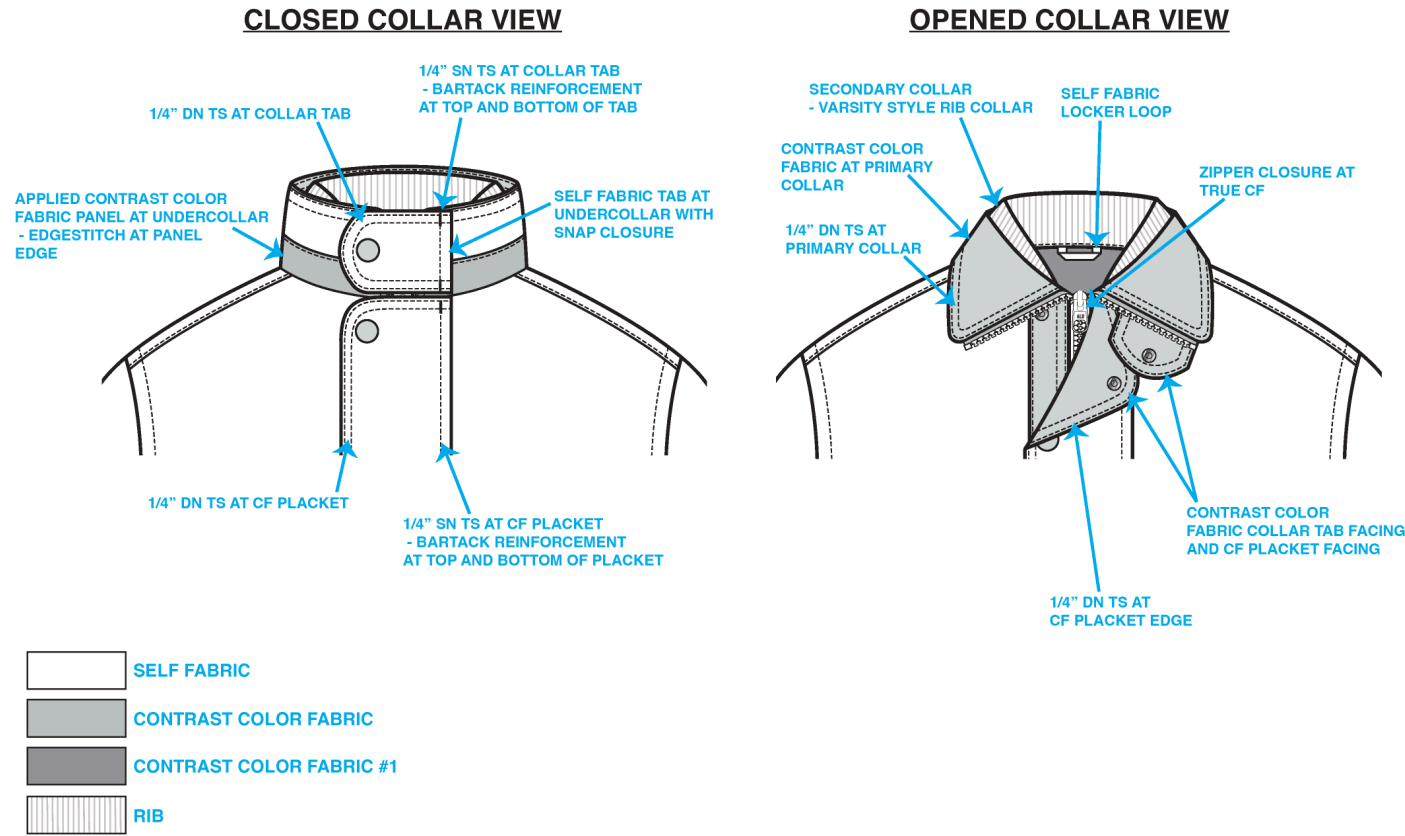


Comments (16)

- A1 1X1 FLAT KNIT RIB SECONDARY COLLAR - SEE CALLOUT PAGE FOR DETAILS
- A2 LOCKER LOOP @ INTERIOR CB NECK
- A3 SELF FABRIC COLLAR WITH CONTRAST COLOR FABRIC AND SNAP COLLAR TAB. - SEE CALLOUT PAGE FOR DETAILS
- A4 2WAY ZIPPER CLOSURE @ TRUE CENTER FRONT - CONTRAST COLOR TOP APPLIED SELF FABRIC PANEL AT WR SIDE OF ZIPPER
- A5 TOP APPLIED CF PLACKET WITH SNAPS AND CONTRAST COLOR SELF FABRIC FACING
- A6 TBD DIRECT EMBROIDERED ARTWORK @ WL CHEST - SEE SEPARATE ARTWORK FILES FOR DETAILS
- A7 CONVERTIBLE SLEEVE WITH ZIPPER CLOSURE - SEE CALLOUT PAGE FOR DETAILS
- A8 FRONT FLANGE CONSTRUCTION - SEE CALLOUT PAGE FOR DETAILS
- A9 APPLIED WELT POCKET WITH ZIPPER CLOSURE - SEE CALLOUT PAGE FOR DETAILS
- A10 GORE-TEX WOVEN LOOP LABEL @ WL SIDE SEAM
- A11 HALF ELASTICATED SET-IN SLEEVE CUFF WITH SELF FABRIC SLEEVE TAB. CONTRAST COLOR FABRIC AT TAB FACING - SEE CALLOUT PAGE FOR DETAILS
- A12 SET-IN ELASTICATED WAISTBAND - SEE CALLOUT PAGE FOR DETAILS
- A13 TBD DIRECT EMBROIDERED ARTWORK @ CB NECK
- A14 TBD DIRECT EMBROIDERED ARTWORK @ BACK FLANGE
- A15 BACK FLANGE CONSTRUCTION - SEE CALLOUT PAGE FOR DETAILS
- A16 BACK WELT POCKETS WITH ZIPPER CLOSURE - SEE CALLOUT PAGE FOR DETAILS

05\_CONSTRUCTION DETAIL-1

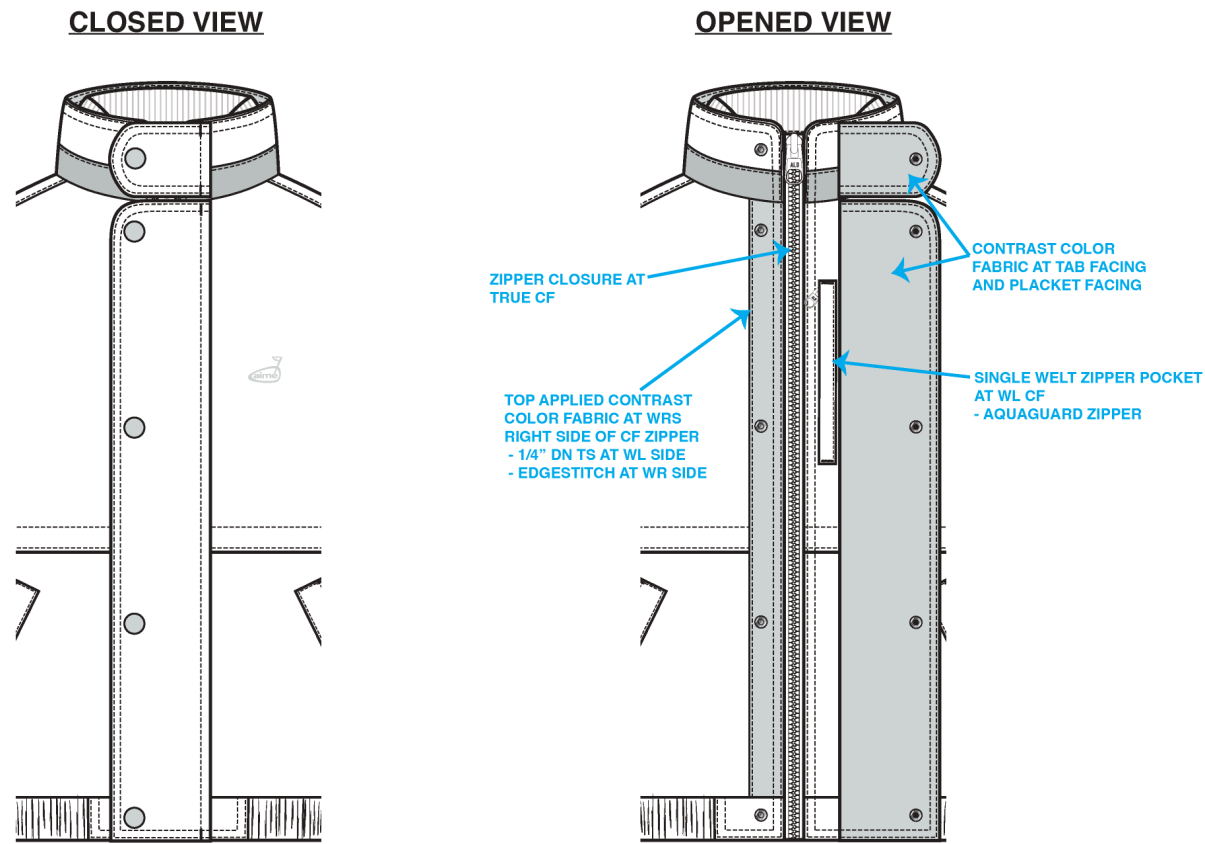
COLLAR CONSTRUCTION DETAIL VIEW



06\_COLLAR DETAIL VIEW

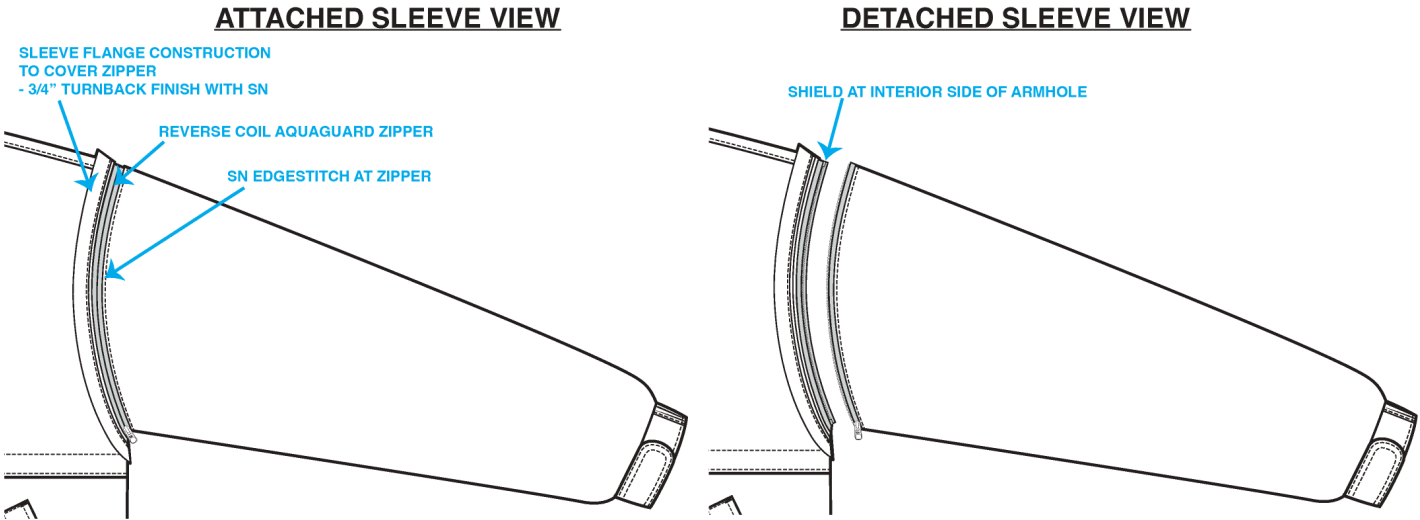


CENTER FRONT PLACKET DETAIL VIEW



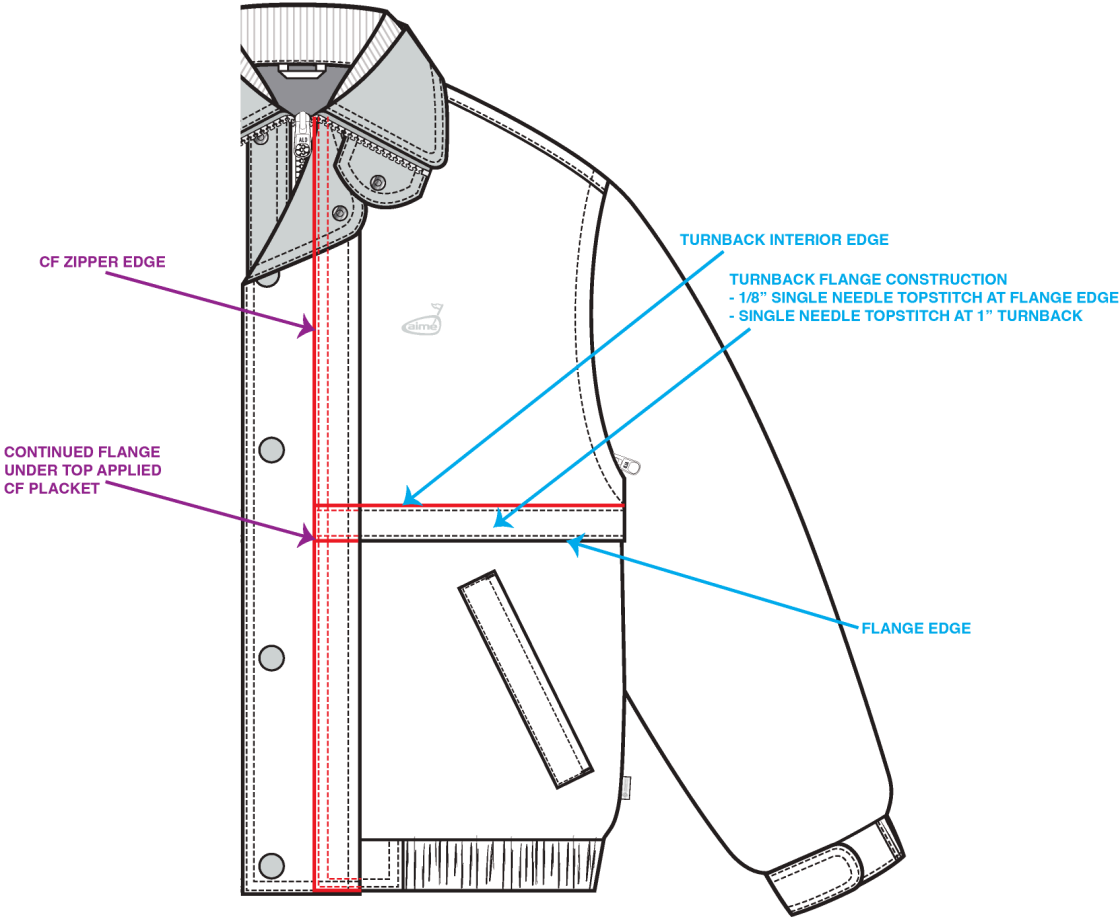
07\_DETAIL-1

CONVERTIBLE SLEEVE DETAIL VIEW



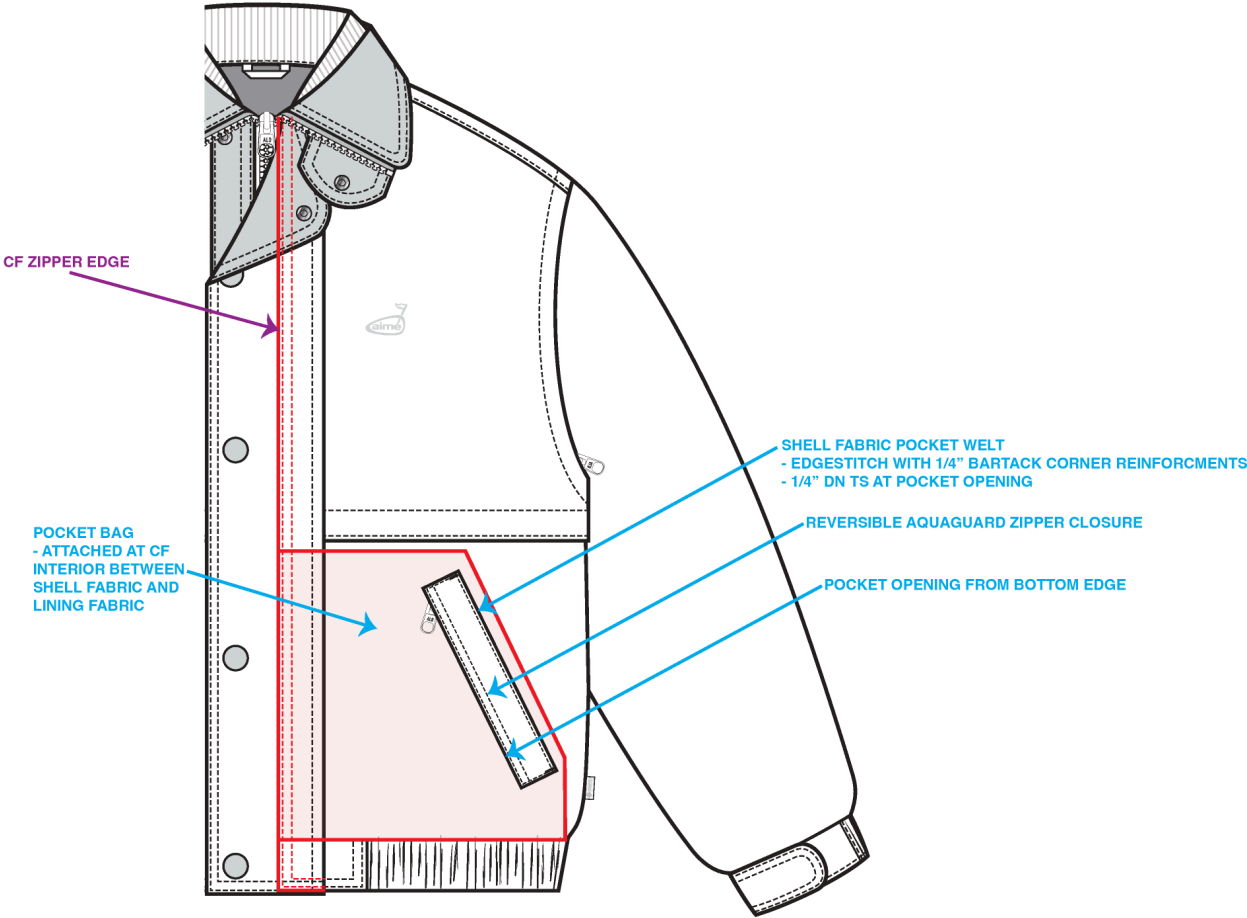
08\_DETAIL-1

FRONT FLANGE DETAIL VIEW



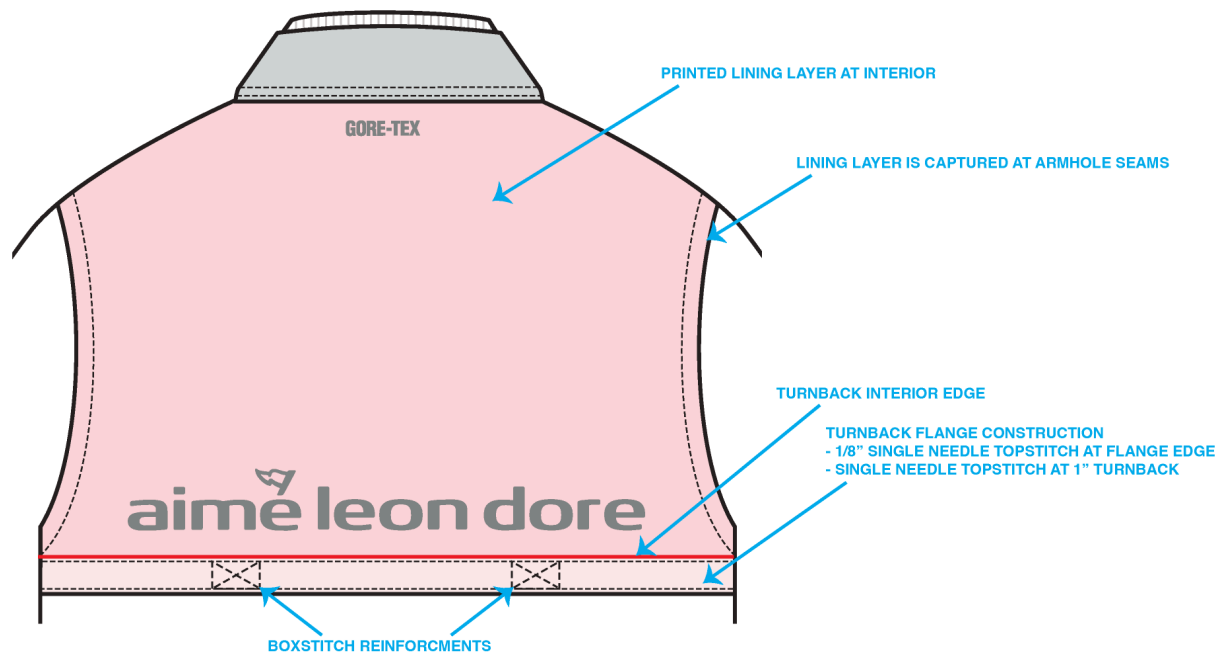
09\_DETAIL-1

FRONT POCKET DETAIL VIEW



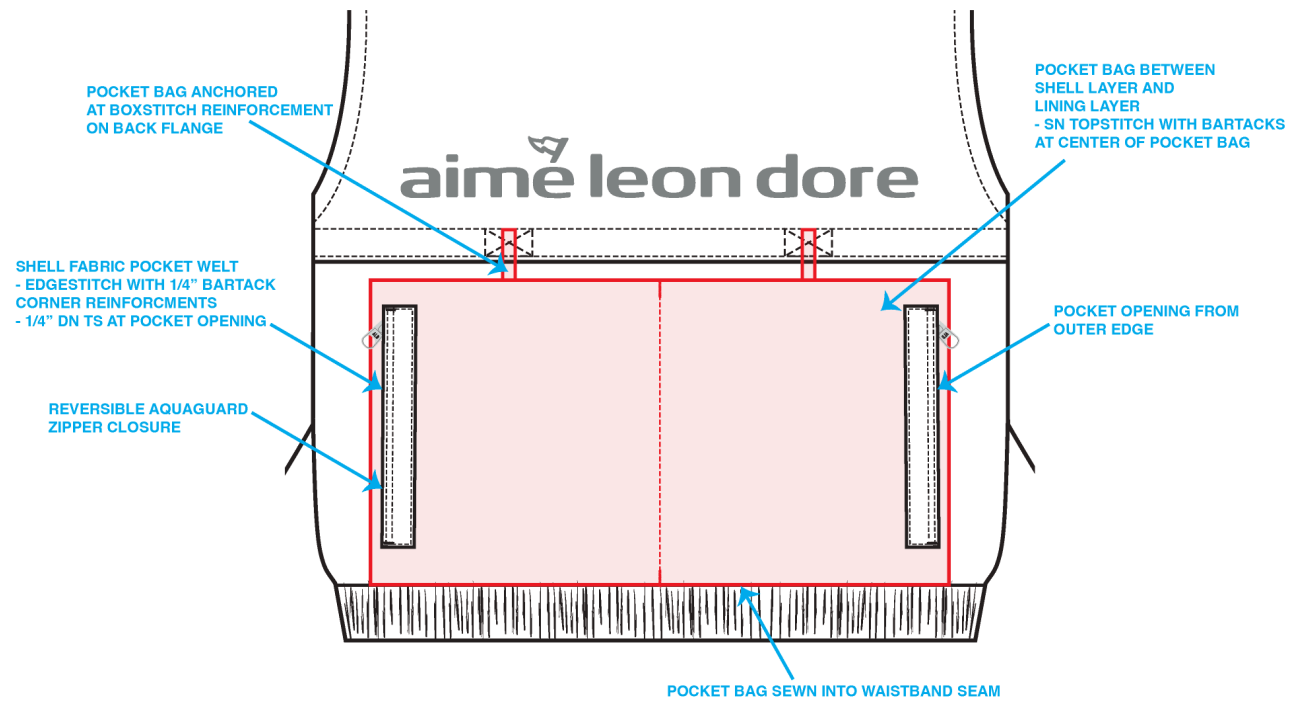
10\_DETAIL-1

BACK FLANGE DETAIL VIEW



11\_DETAIL-1

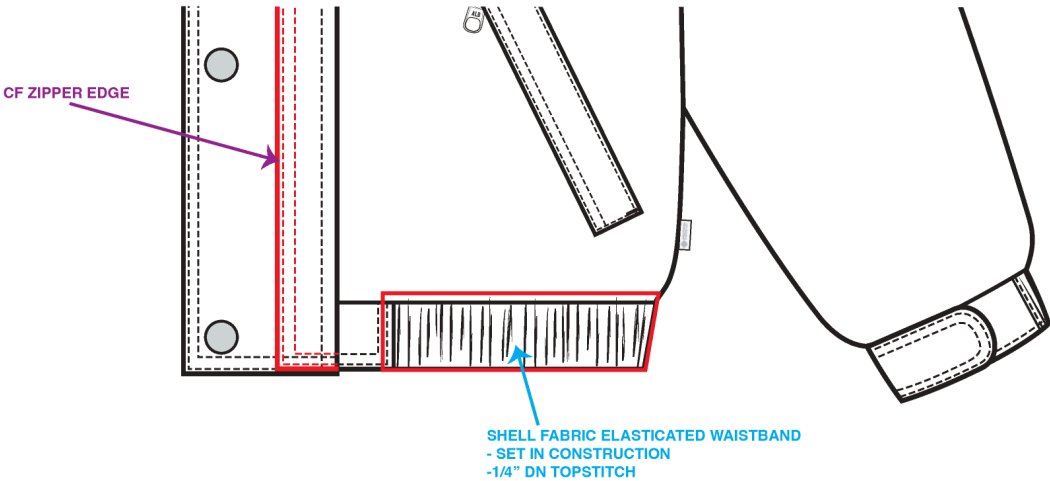
BACK POCKET DETAIL VIEW



12\_DETAIL-1

WAISTBAND DETAIL VIEW

FRONT WAISTBAND VIEW

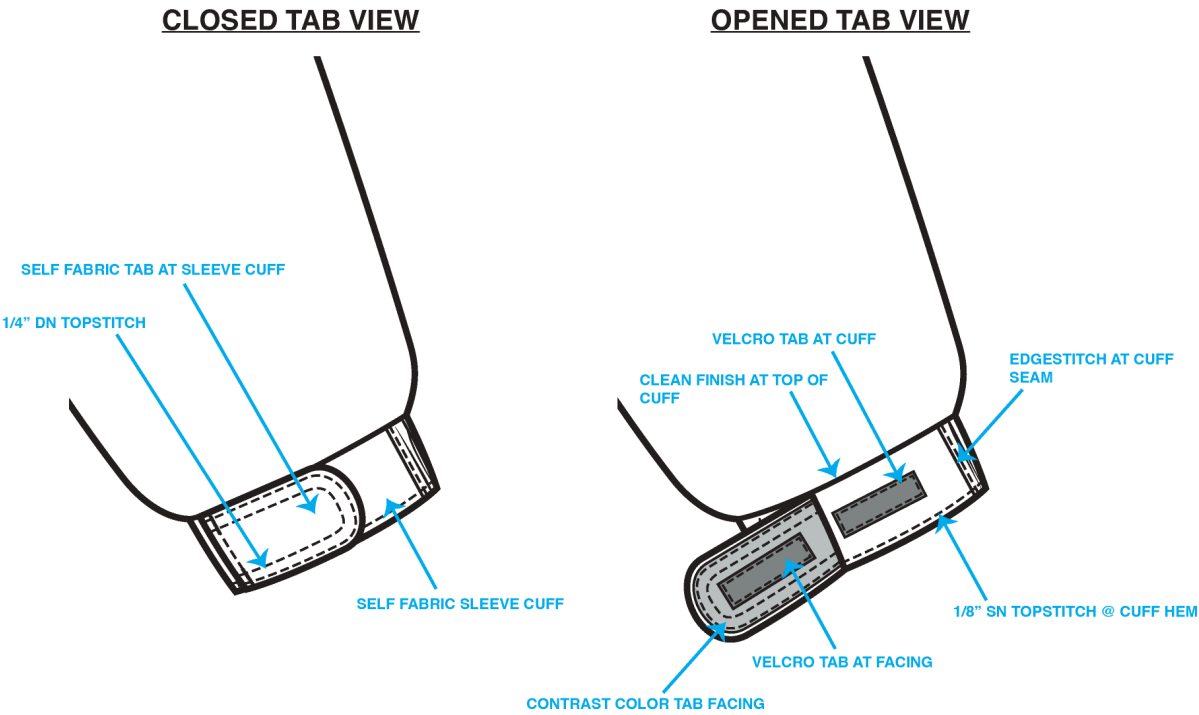


BACK WAISTBAND VIEW



13\_DETAIL-1

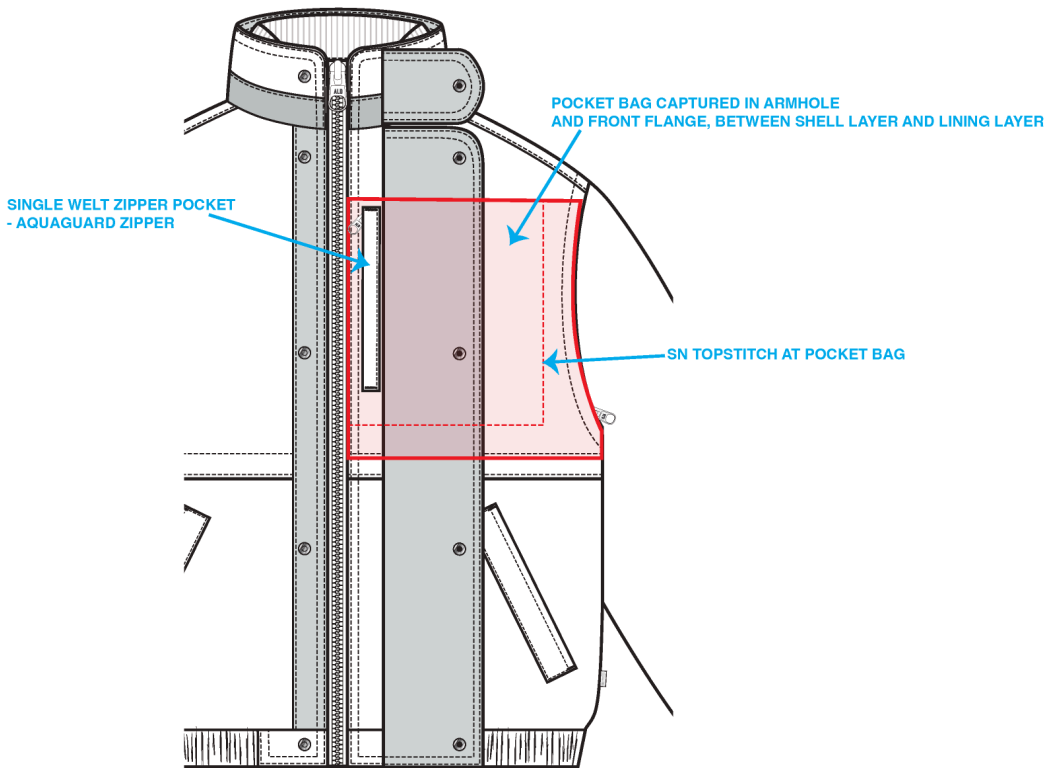
SLEEVE DETAIL VIEW



14\_DETAIL-1

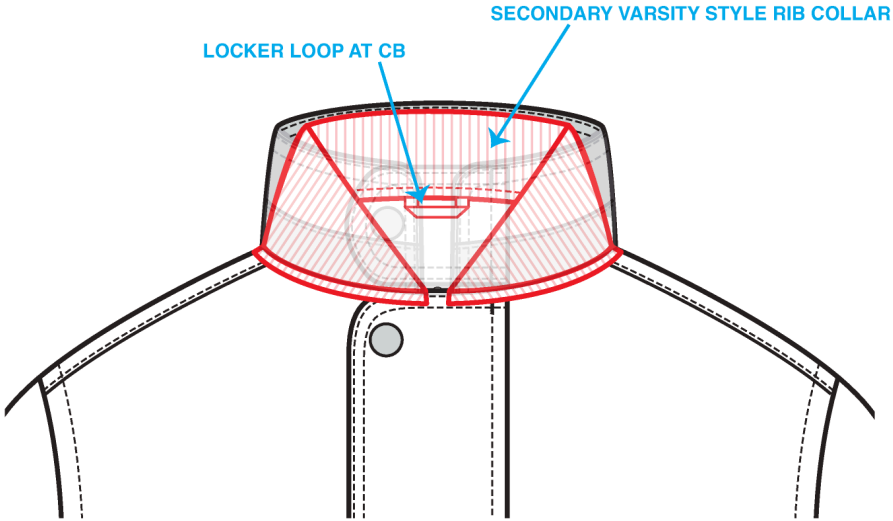


WL CHEST ZIPPER POCKET DETAIL VIEW



15\_DETAIL-1

SECONDARY RIB COLLAR DETAIL VIEW



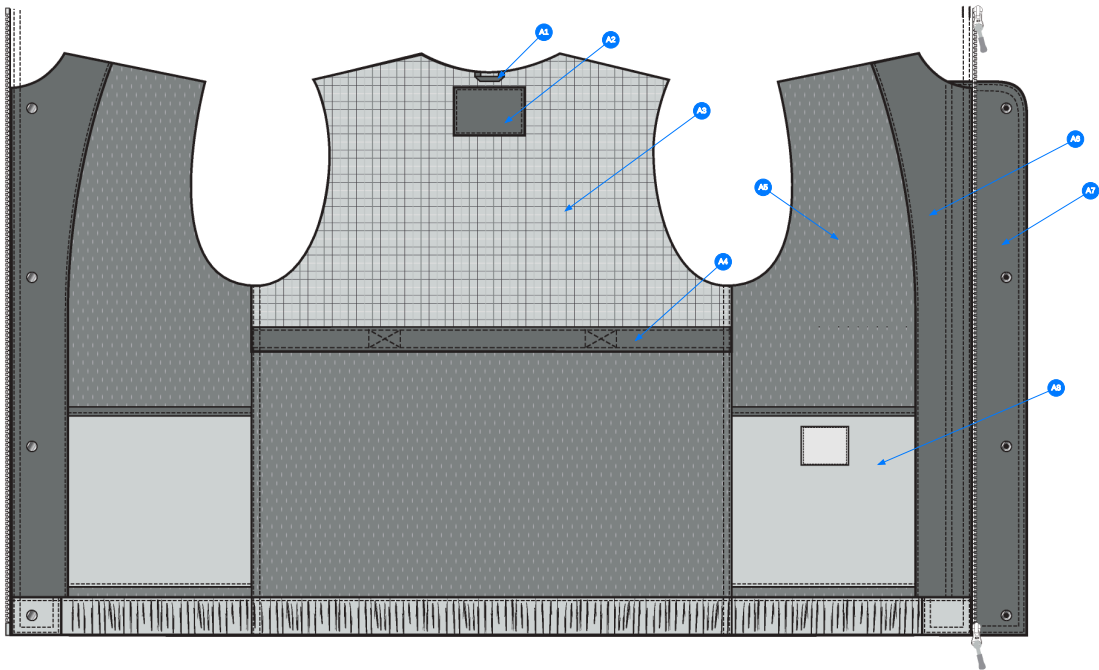
REFERENCE FOR RIB COLLAR SHAPE



16\_DETAIL-1

- SELF FABRIC
- CONTRAST COLOR SELF FABRIC
- CONTRAST COLOR SELF FABRIC

INTERIOR VIEW



Comments (8)

- A1 CONTRAST FABRIC LOCKER LOOP @ CB NECK
- A2 CONTRAST COLOR SELF FABRIC @ MAIN LABEL ANCHOR PATCH
- A3 CONTRAST PRINTED LINING @ INTERIOR BACK YOKE
- A4 CONTRAST COLOR SELF FABRIC @ TOP APPLIED PANEL AT INTEIOR BACK YOKE SEAM
- A5 MESH LINING @ INTEROR FRONT AND BACK BODY
- A6 CONTRAST COLOR SELF FABRIC @ INTERIOR FACING
- A7 CONTRAST COLOR SELF FABRIC @ CF PLACKET FACING
- A8 SELF FABRIC @ DROP-IN TOP APPLIED POCKET - TBD ARTWORK AT WL POCKET

17\_INTERIOR VIEW-1

ARTWORK PAGE

- ARTWORK IS TECHNIQUE IS DIRECT EMBROIDERY



COCONUT MILK COLORWAY



SERAFIL: #380

PINE GROVE COLORWAY



SERAFIL: #825

18\_ARTWORK-1

ARTWORK PAGE

- ARTWORK IS TECHNIQUE IS DIRECT EMBROIDERY



COCONUT MILK COLORWAY



SERAFIL: #380

PINE GROVE COLORWAY



SERAFIL: #825

19\_ARTWORK 2-1

ARTWORK PAGE

- ARTWORK IS TECHNIQUE IS DIRECT EMBROIDERY



COCONUT MILK COLORWAY



SERAFIL: #380

PINE GROVE COLORWAY



SERAFIL: #825

20\_ARTWORK 3-1

Sample Size: M

POINT OF MEASURE	CODE	HOW TO MEASURE	CRITICAL	TYPE	TOLERANCE	M
FRONT BODY LENGTH	WV001	FROM HPS TO BOTTOM EDGE	true	Full	1/2 in	27 in
BACK BODY LENGTH	WV002	FROM CB NECK SEAM TO BOTTOM EDGE	true	Full	1/2 in	26 1/4 in
CF ZIPPER LENGTH	WV003	FROM ZIPPER TIP TO TIP	true	Full	1/4 in	25 in
FRONT NECK DROP	WV004	FROM HPS LEVEL STRAIGHT DOWN TO CF NECK SEAM	true	Full	1/8 in	5 1/2 in
BACK NECK DROP	WV005	FROM HPS LEVEL STRAIGHT DOWN TO CB NECK SEAM	true	Full	1/8 in	1/2 in
BACK NECK WIDTH	WV006	FROM SEAM TO SEAM AT BACK PANEL HPS LEVEL	true	Full	1/4 in	7 1/2 in
SHOULDER SEAM FORWARD	WV007	FROM HPS TO SHOUDLER SEAM AT NECK	false	Full	1/8 in	1 3/4 in
SHOULDER SLOPE	WV008	FROM HPS LEVEL STRAIGHT DOWN TO TOP OF ARMHOLE SM	true	Full	1/8 in	2 5/8 in
ACROSS SHOULDER	WV009	FROM ARMHOLE SEAM TO SEAM AT BACK PANEL	true	Full	1/4 in	23 in
ACROSS FRONT	WV010	MEASURE FROM A/H SEAM TO SEAM, 7" FROM HPS FOR M SIZE, FACTORY GRADE POS. FOR ALL OTHER SIZES	true	Full	1/4 in	22 in
ACROSS BACK	WV011	MEASURE FROM A/H SEAM TO SEAM, 7" FROM HPS FOR M SIZE, FACTORY GRADE POS. FOR ALL OTHER SIZES	true	Full	1/4 in	22 1/4 in
CHEST CIRCUMFERENCE	WV012	MEASURE 1" BELOW ARMHOLE	true	Full	1/2 in	53 in
BOTTOM OPENING CIRCUMFERENCE, STRETCHED	WV014	MEASURE AT BOTTOM HEM SEAM, STRETCHED	true	Full	1/2 in	51 in
BOTTOM OPENING CIRCUMFERENCE, RELAXED	WV015	MEASURE AT BOTTOM EDGE, RELAXED	true	Full	1/2 in	40 in
BOTTOM HEM HEIGHT	WV016		false	Full	1/8 in	1 1/2 in
ARMHOLE DROP	WV017	FROM HPS LEVEL STRAIGHT DOWN TO UNDERARM SEAM	true	Full	1/4 in	14 1/2 in
BICEP CIRCUMFERENCE	WV018	MEASURE AT 1" BELOW ARMHOLE	true	Full	1/4 in	24 1/2 in
FOREARM CIRCUMFERENCE	WV019	MEASURE AT 9" ABOVE SLEEVE HEM EDGE	true	Full	1/4 in	18 in
SLEEVE OPENING CIRCUMFERENCE, STRETCHED	WV020-1	MEASURE AT SLEEVE EDGE	true	Full	1/4 in	13 in
SLEEVE OPENING CIRCUMFERENCE, RELAXED	WV020		true	Full	1/4 in	10 in
SLEEVE LENGTH	WV026	3PT MEAS. FROM CB NECK, ARMHOLE TO SLEEVE HEM EDGE	true	Full	1/2 in	36 in
SLEEVE HEM HEIGHT	WV021		false	Full	1/8 in	2 in
ARMHOLE ZIPPER LENGTH	bVbgvm		false	Full	3/8 in	25 1/2 in
COLLAR HEIGHT AT CF	WV022		false	Full	1/8 in	3 1/4 in
COLLAR HEIGHT AT CB	WV023		false	Full	1/8 in	3 3/4 in
COLLAR LENGTH ALONG OUTER EDGE	WV025	INCLUDING ZIPPER WIDTH	false	Full	1/4 in	24 in
KNIT COLLAR HEIGHT AT CB	Tmq28o		false	Full	1/8 in	2 1/4 in
FLAP HEIGHT AT SIDE SEAM	rMR81G		false	Full	1/8 in	1 1/2 in
FRONT POCKET POSITION ABOVE BOTTOM HEM SEAM	WV	AT SIDE BY SIDE SEAM	false	Full	1/8 in	2 1/4 in
FRONT POCKET POSITION FROM SIDE SEAM TO TOP EDGE	mMnAOY		false	Full	1/8 in	5 in
FRONT POCKET POSITION FROM SIDE SEAM TO BOTTOM EDGE	zTVNnm		false	Full	1/8 in	2 in
FRONT POCKET WELT WIDTH	UgybMy		false	Full	1/16 in	1 1/8 in

FRONT POCKET WELT LENGTH	HpwwdY		false	Full	1/4 in	7 in
FRONT POCKET ZIPPER LENGTH	gBZD1c		false	Full	1/4 in	6 3/4 in
BACK POCKET POSITION ABOVE BOTTOM HEM SEAM	ZJoc1u		false	Full	1/8 in	1 1/2 in
BACK POCKET POSITION FROM SIDE SEAM	5ZUUhA		false	Full	1/8 in	5 in
BACK POCKET WELT WIDTH	Rmw5Ff		false	Full	1/16 in	1 1/8 in
BACK POCKET WELT LENGTH	huZpmz		false	Full	1/4 in	7 in
BACK POCKET ZIPPER LENGTH	oX0dlC		false	Full	1/4 in	6 3/4 in
CF PLACKET WIDTH	1x73Lw		false	Full	1/8 in	3 in
UNDER PLACKET WELT POCKET ZIPPER LENGTH	FkmM1A		false	Full	1/4 in	6 in
1ST CF SNAP POSITION BELOW FRONT NECK SEAM	OOZDsP		false	Full	1/8 in	3/4 in
LAST CF SNAP POSITION FROM BOTTOM EDGE	pntPTz		false	Full	1/8 in	1 in



## Development - UA - Hyeyoung Cho

CREATED ON APR 23, 2025 4:46 PM

Date : 4/21/25

TD : Hyeyoung Cho

Status : Submit 1st Proto

Development notes :

- 1. Create a pattern following the sketches and spec measurements.

COMPONENT		QTY	1. NO COLOR ASSIGNED
1	<b>BnrEL NINO-PG 3L</b> CODE: bnrEL NINO-PG 3L Placement: BODY / UNDERCOLLAR / COLLAR TAB / CF PLACKET / SLEEVE CUFF / SLEEVE TAB / FRONT POCKET WELTS / BACK POCKET WELTS / WAISTBAND Supplier: GORE-TEX Country of Origin: CHINA		Not used
2	<b>BnrEL NINO-PG 3L</b> CODE: bnrEL NINO-PG 3L Placement: TOP COLLAR / COLLAR PANEL / COLLAR TAB FACING / CF PLACKET FACING / CF APPLIED PANEL / SLEEVE TAB FACINGS / @ INTERIOR BACK YOKE SEAM / BINDING OF INTERIOR DROP-IN POCKETS / INTERIOR MAIN LABEL ANCHOR PATCH / INTERIOR CB LOCKER LOOP Supplier: GORE-TEX Country of Origin: CHINA		Not used
3	<b>IN DEV</b> CODE: TBD Placement: @ INTERIOR FRONT + BACK BODY Notes: TBD MESH LINING QUALITY		Not used
4	<b>BEMBERG LINING</b> CODE: BEMBERG LINING Placement: @ INTERIOR SLEEVES Supplier: Factory Sourced		Not used
5	<b>SEAM SEAL TAPE</b> CODE: SEAM SEAL TAPE Placement: @ ALL INTERIOR SEAMS Notes: 15MM Supplier: Factory Sourced		Not used
6	<b>IN DEV</b> CODE: TBD Placement: @ SECONDARY COLLAR Notes: 1X1 FLAT KNIT COTTON RIB - PLEASE SEND LOCAL OPTIONS FOR APPROVAL		Not used
7	<b>YKK AQUAGUARD 2-WAY VISLON OPEN END ZIPPER</b> CODE: YKK AQUAGUARD 2-WAY VISLON OPEN END ZIPPER Placement: @ CF Supplier: YKK Country of Origin: CHINA		Not used SIZE: 5GG
8	<b>YKK AQUAGUARD T10 MATTE Zipper Tape</b> CODE: YKK AQUAGUARD T10 MATTE Zipper Tape Placement: @ CF ZIPPER		Not used
9	<b>IN DEV</b> CODE: TBD Placement: @ CF ZIPPER Notes: TBD ZIPPER SLIDER; PLEASE PROCEED WITH A COMPATIBLE ZIPPER SLIDER FOR 1ST PROTO		Not used
10	<b>YKK AQUAGUARD 2-WAY VISLON OPEN END ZIPPER</b> CODE: YKK AQUAGUARD 2-WAY VISLON OPEN END ZIPPER Placement: 1 @ EACH FRONT HAND POCKET Supplier: YKK Country of Origin: CHINA		Not used SIZE: 5GG
11	<b>YKK AQUAGUARD T10 MATTE Zipper Tape</b> CODE: YKK AQUAGUARD T10 MATTE Zipper Tape Placement: 1 @ EACH FRONT HAND POCKET ZIPPER		Not used
12	<b>IN DEV</b> CODE: TBD Placement: 1 @ EACH FRONT HAND POCKET ZIPPER Notes: TBD ZIPPER SLIDER; PLEASE PROCEED WITH A COMPATIBLE ZIPPER SLIDER FOR 1ST PROTO		Not used
13	<b>YKK AQUAGUARD 2-WAY VISLON OPEN END ZIPPER</b> CODE: YKK AQUAGUARD 2-WAY VISLON OPEN END ZIPPER Placement: 1 @ EACH BACK POCKET Supplier: YKK Country of Origin: CHINA		Not used SIZE: 5GG
14	<b>YKK AQUAGUARD T10 MATTE Zipper Tape</b> CODE: YKK AQUAGUARD T10 MATTE Zipper Tape Placement: 1 @ EACH BACK POCKET ZIPPER		Not used
15	<b>IN DEV</b> CODE: TBD Placement: 1 @ EACH BACK POCKET ZIPPER Notes: TBD ZIPPER SLIDER; PLEASE PROCEED WITH A COMPATIBLE ZIPPER SLIDER FOR 1ST PROTO		Not used

COMPONENT		QTY	1. NO COLOR ASSIGNED
16	<b>YKK AQUAGUARD 2-WAY VISLON OPEN END ZIPPER</b> CODE: YKK AQUAGUARD 2-WAY VISLON OPEN END ZIPPER Placement: 1 @ EACH ARMHOLE Supplier: YKK Country of Origin: CHINA		Not used SIZE: 5GG
17	<b>YKK AQUAGUARD T10 MATTE Zipper Tape</b> CODE: YKK AQUAGUARD T10 MATTE Zipper Tape Placement: 1 @ EACH ARMHOLE ZIPPER		Not used
18	<b>IN DEV</b> CODE: TBD Placement: 1 @ EACH ARMHOLE ZIPPER Notes: TBD ZIPPER SLIDER; PLEASE PROCEED WITH A COMPATIBLE ZIPPER SLIDER FOR 1ST PROTO		Not used
19	<b>IN DEV</b> CODE: TBD Placement: 6 @ CF Notes: TBD 28L METAL SNAP; PLEASE SEND LOCAL OPTIONS FOR APPROVAL		Not used
20	<b>ELASTIC</b> CODE: ELASTIC Placement: @ INTERIOR SLEEVE CUFFS Notes: COMPARABLE SIZE TO SLEEVE HEIGHT Supplier: Factory Sourced		Not used WIDTH: Undefined
21	<b>ELASTIC</b> CODE: ELASTIC Placement: @ INTERIOR WB Notes: COMPARABLE SIZE TO HEM HEIGHT Supplier: Factory Sourced		Not used WIDTH: Undefined
22	<b>IN DEV</b> CODE: TBD Placement: @ EACH SLEEVE TAB + SLEEVE CUFF Notes: TBD VELCRO; PLEASE PROCEED WITH LOCAL OPTION		Not used
23	<b> Gore-Tex Woven Loop Label</b> CODE: ELU3201L29 Placement: @ W/L SIDE SEAM		Not used
24	<b>THREAD</b> CODE: THREAD Placement: @ ENTIRE BODY Notes: 100% POLYESTER TEX SIZE: T-60 SPI:8-10 Supplier: Factory Sourced		Not used
Components		24	Total 0.00