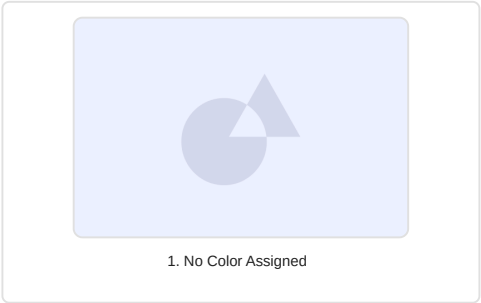


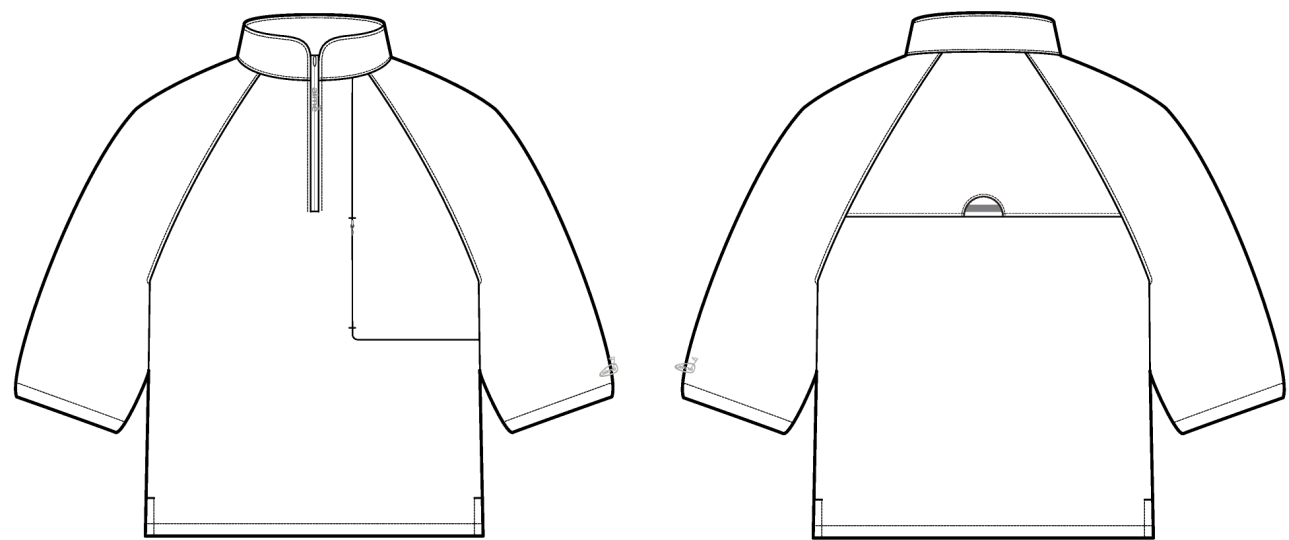
Golf Quarter Zip

Name	Golf Quarter Zip
Style No.	SS26WJ036
Division	Mens
Category	Outerwear
Season	Spring/Summer
Year	2026
Size Scale	M -Sample size

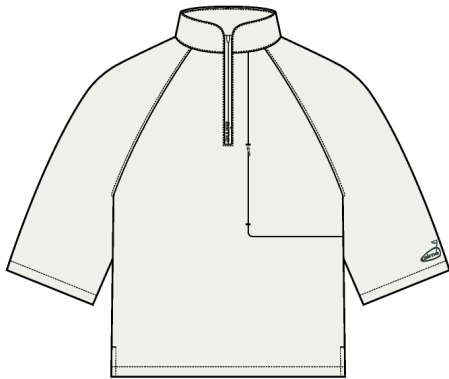
XS S M L XL XXL

Designer Name	Quinton
Created by/Author	4/22/2025 Cristina Loukopoulos cristina@aimeleondore.com





01\_BLACK AND WHITE SKETCH-1



COCONUT MILK



PINE GROVE



NAVAL ACADEMY

02\_COLOR-1

FABRIC / TRIM LEGEND:

FABRIC LEGEND:

SELF FABRIC OPTION A: AT BODY / COLLAR / SLEEVES /  
POCKET BAGS  
MILL: LEVERSTYLE  
ARTICLE NUMBER: 1WTT008220184  
QUANTITY: FTY TO ADVISE

CONTRAST MESH LINING: AT INTERIOR BODY  
MILL: LEVER  
ARTICLE NUMBER: 1KAK001220002  
QUANTITY: FTY TO ADVISE

TRIM LEGEND:

CF ZIPPER TAPE: AT CF  
VENDOR: YKK  
ARTICLE NUMBER: YKK - COLOR TBD  
QUANTITY: 01

CF ZIPPER SLIDER: AT CF  
VENDOR: YKK  
ARTICLE NUMBER: YKK #5 DSYG  
QUANTITY: 01

CF ZIPPER TEETH: AT CF  
VENDOR: YKK  
ARTICLE NUMBER: YKK #5 COIL CLOSED END ZIPPER  
QUANTITY: 01

ZIPPER TAPE: AT FRONT CHEST POCKET  
VENDOR: YKK  
ARTICLE NUMBER: YKK - COLOR TBD  
QUANTITY: 01

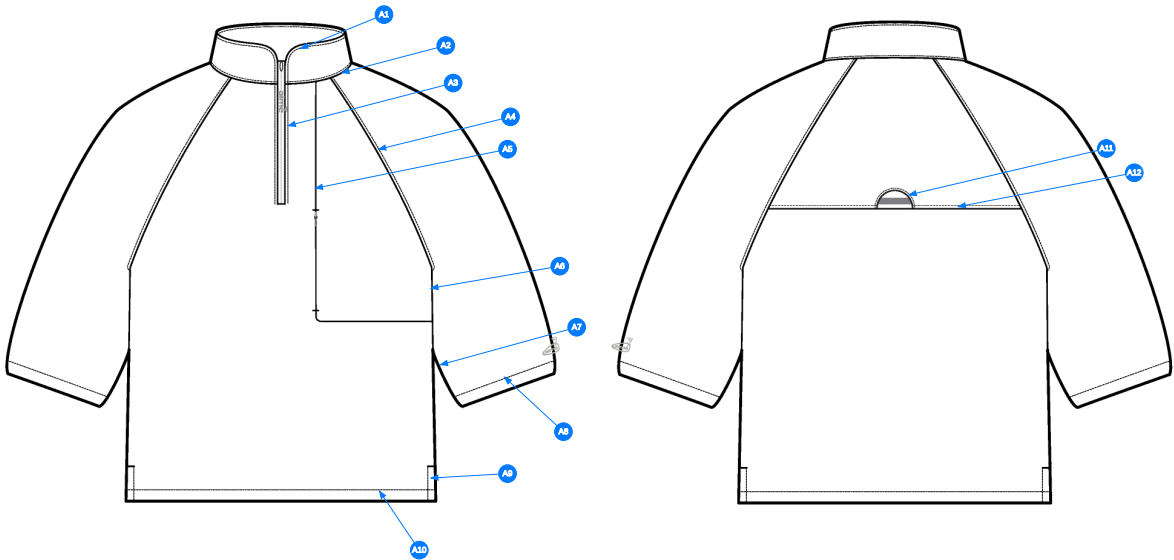
ZIPPER SLIDER: AT FRONT CHEST POCKET  
VENDOR: YKK  
ARTICLE NUMBER: YKK #3 INVISIBLE TEARDROP ZIPPER  
QUANTITY: 01

ZIPPER TEETH: AT FRONT CHEST POCKET  
VENDOR: YKK  
ARTICLE NUMBER: YKK #3 INVISIBLE ZIPPER  
QUANTITY: 01

ALD GOLF HAT LABEL: SET-IN LABEL @ BACK YOKE  
VENDOR: SHINING  
ARTICLE NUMBER: 2024100016  
QUANTITY: 01

ARTWORK: WL LOWER LEFT SLEEVE  
VENDOR: FTY SOURCED  
ARTICLE NUMBER: TBD  
QUANTITY: 01

TBD ARTWORK: AT WL ZIPPER  
VENDOR: TBD  
ARTICLE NUMBER: TBD  
QUANTITY: 01



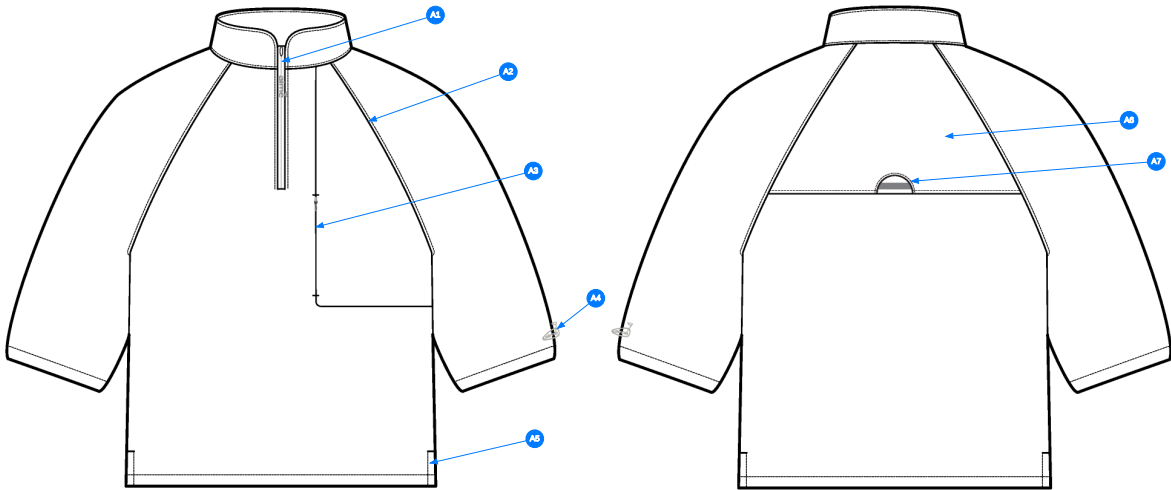
Comments (12)

- A1 EDGESTITCH @ COLLAR
- A2 EDGESTITCH @ NECK SEAM
- A3 EDGESTITCH @ CF ZIPPER
- A4 EDGESTITCH @ RAGLAN SLEEVES
- A5 CLEAN FINISH @ CHEST POCKET SEAM
- A6 EDGESTITCH @ SIDE SEAM
- A7 EDGESTITCH @ SLEEVE SEAM
- A8 1" SN TS @ SLEEVE HEM
- A9 1/4" SN TS @ SIDE VENT w/ BARTACK REINFORCEMENT
- A10 1" SN TS @ HEM
- A11 EDGESTITCH @ BACK YOKE SET-IN LABEL
- A12 EDGESTITCH @ BACK YOKE

04\_STITCH DETAIL-1

Comments (7)

- A1 REVERSE COIL ZIPPER @ CF - PRINTED ARTWORK AT ZIPPER TAPE
- A2 RAGLAN SLEEVE CONSTRUCTION
- A3 INVISIBLE ZIPPER POCKET @ WL CHEST POCKET
- A4 DIRECT EMBROIDERY @ WL SLEEVE HEM
- A5 VENT CONSTRUCTION @ SIDE SEAM HEM
- A6 BACK YOKE CONSTRUCTION
- A7 BRANDED SET-IN LABEL @ CENTE BACK YOKE - SEE CALLOUT PAGE FOR DETAILS



05\_CONSTRUCTION DETAIL-1

ARTWORK PAGE

- ARTWORK IS TECHNIQUE IS DIRECT EMBROIDERY



COCONUT MILK COLORWAY



 SERAFIL: #TBD

PINE GROVE COLORWAY



 SERAFIL: #TBD

NAVAL ACADEMY COLORWAY



 SERAFIL: #TBD

07\_DETAIL-1



ARTWORK PAGE

- ARTWORK IS TECHNIQUE IS DIRECT EMBROIDERY



COCONUT MILK COLORWAY



 SERAFIL: #TBD

PINE GROVE COLORWAY



 SERAFIL: #TBD

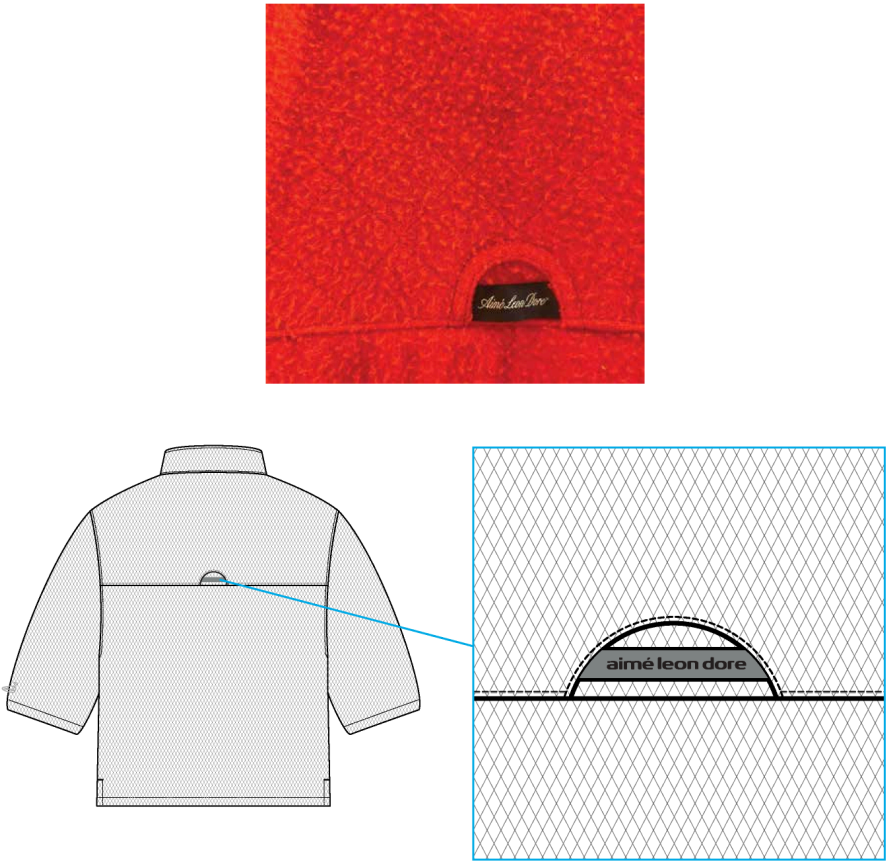
NAVAL ACADEMY COLORWAY



 SERAFIL: #TBD

08\_DETAIL-1

SET IN LABEL DETAIL VIEW



Artboard 1 copy 10-1

Sample Size: M

POINT OF MEASURE	CODE	HOW TO MEASURE	CRITICAL	TYPE	TOLERANCE	M
FRONT BODY LENGTH	WV001	FROM HPS TO BOTTOM EDGE	true	Full	1/2 in	27 1/2 in
BACK BODY LENGTH	WV002	FROM CB NECK SEAM TO BOTTOM EDGE	true	Full	1/2 in	26 7/8 in
CF ZIPPER LENGTH	WV003	FROM ZIPPER TIP TO TIP	true	Full	1/4 in	8 1/4 in
FRONT NECK DROP	WV004	FROM HPS LEVEL STRAIGHT DOWN TO CF NECK SEAM	true	Full	1/8 in	3 3/4 in
BACK NECK DROP	WV005	FROM HPS LEVEL STRAIGHT DOWN TO CB NECK SEAM	true	Full	1/8 in	5/8 in
BACK NECK WIDTH	WV006	FROM SEAM TO SEAM AT BACK PANEL HPS LEVEL	true	Full	1/4 in	7 in
SHOULDER SLOPE - RAGLAN	WVRAG	MEAS. AT IMAG. SHOUDLER POINT 9 1/2" FROM CB, FTY GRADE POS. FOR ALL OTHER SIZES	true	Full	1/8 in	2 in
FRONT RAGLAN SEAM FORWARD FROM HPS	WV		false	Full	1/8 in	2 1/2 in
BACK RAGLAN SEAM BACKWARD FROM HPS	WV		false	Full	1/8 in	2 1/4 in
ACROSS FRONT	WV010	MEASURE FROM A/H SEAM TO SEAM, 7" FROM HPS FOR M SIZE, FACTORY GRADE POS. FOR ALL OTHER SIZES	true	Full	1/4 in	14 1/2 in
ACROSS BACK	WV011	MEASURE FROM A/H SEAM TO SEAM, 7" FROM HPS FOR M SIZE, FACTORY GRADE POS. FOR ALL OTHER SIZES	true	Full	1/4 in	15 1/2 in
CHEST CIRCUMFERENCE	WV012	MEASURE 1" BELOW ARMHOLE	true	Full	1/2 in	45 in
BOTTOM OPENING CIRCUMFERENCE	WV	MEASURE AT BOTTOM HEM EDGE	true	Full	1/2 in	45 in
ARMHOLE DROP	WV017	FROM HPS LEVEL STRAIGHT DOWN TO UNDERARM SEAM	true	Full	1/4 in	12 in
BICEP CIRCUMFERENCE	WV018	MEASURE AT 1" BELOW ARMHOLE	true	Full	1/4 in	19 1/2 in
SLEEVE OPENING CIRCUMFERENCE	WV		true	Full	1/4 in	16 1/4 in
SLEEVE LENGTH	WV026	3PT MEAS. FROM CB NECK, ARMHOLE TO SLEEVE HEM EDGE	true	Full	1/2 in	22 1/2 in
COLLAR HEIGHT AT CB	WV023		false	Full	1/8 in	2 1/4 in
COLLAR LENGTH ALONG TOP EDGE	EJpPnF	FROM COLLAR TOP EDGE TO TOP EDGE	false	Full	1/4 in	16 3/4 in
W/L CHEST INSET POCKET POSITION FROM TRUE CF	WV		false	Full	1/8 in	1 1/4 in
W/L CHEST INSET POCKET HEIGHT AT SIDE BY CF	FwbmVn		false	Full	1/4 in	12 1/2 in
W/L CHEST INSET POCKET ZIPPER LENGTH	A4gO4I		false	Full	1/4 in	6 in
BACK YOKE HEIGHT AT CB	WVYOKE	FROM CB NECK SEAM TO YOKE SEAM	false	Full	1/4 in	8 in
SIDE SLIT LENGTH	rY53dZ		false	Full	1/8 in	2 1/2 in
W/L SLEEVE EMB. ARTWORK POSITION ABOVE THE SLEEVE HEM EDGE	30ElmQ		false	Full	1/8 in	1 1/4 in

## Development - Hyeyoung Cho

CREATED ON APR 21, 2025 4:51 PM

Date : 4/21/25

TD : Hyeyoung Cho

Status : Submit 1st Proto

Development notes :

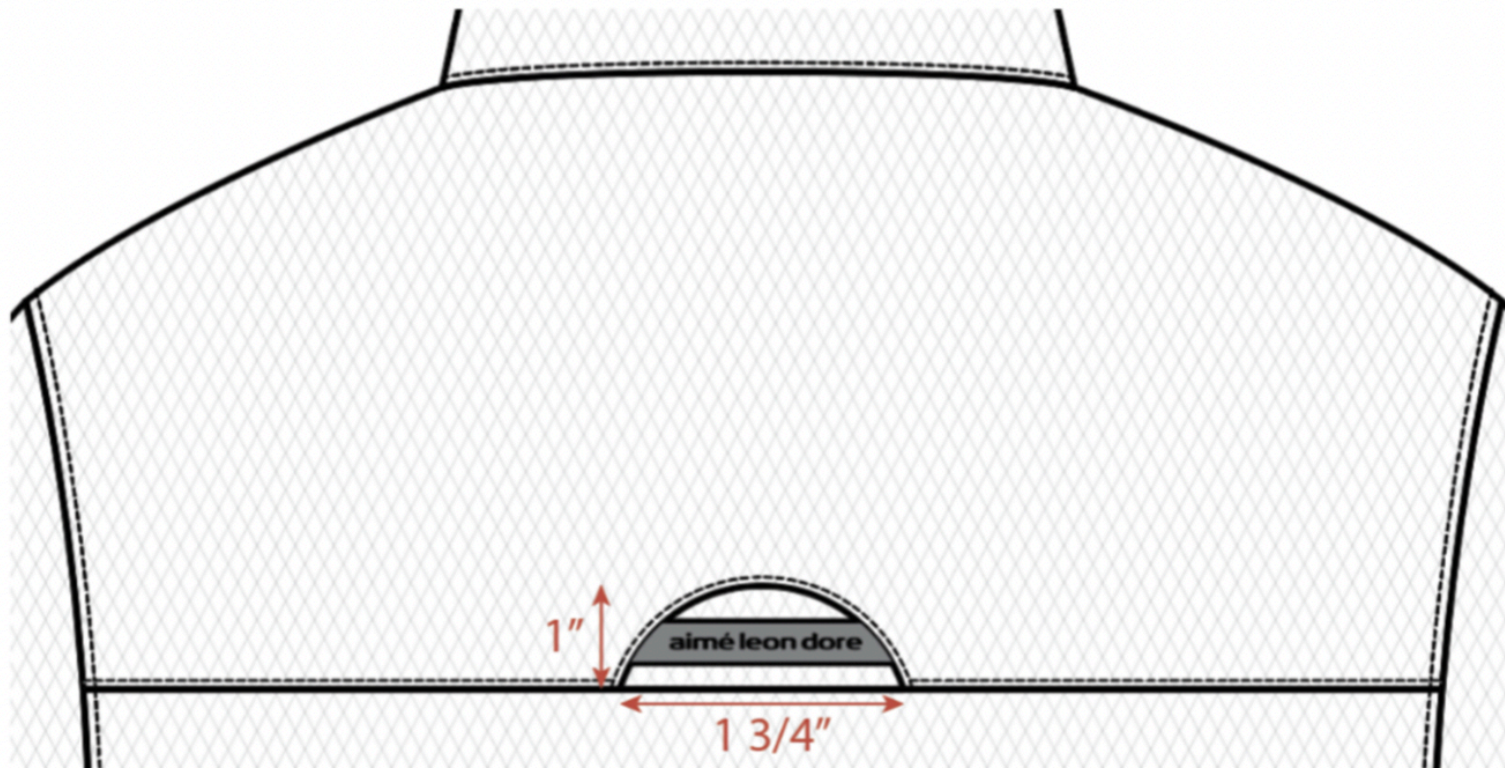
1. Create a pattern following sketches and spec.
2. See diagram for sleeve artwork position and CB inserted label construction.



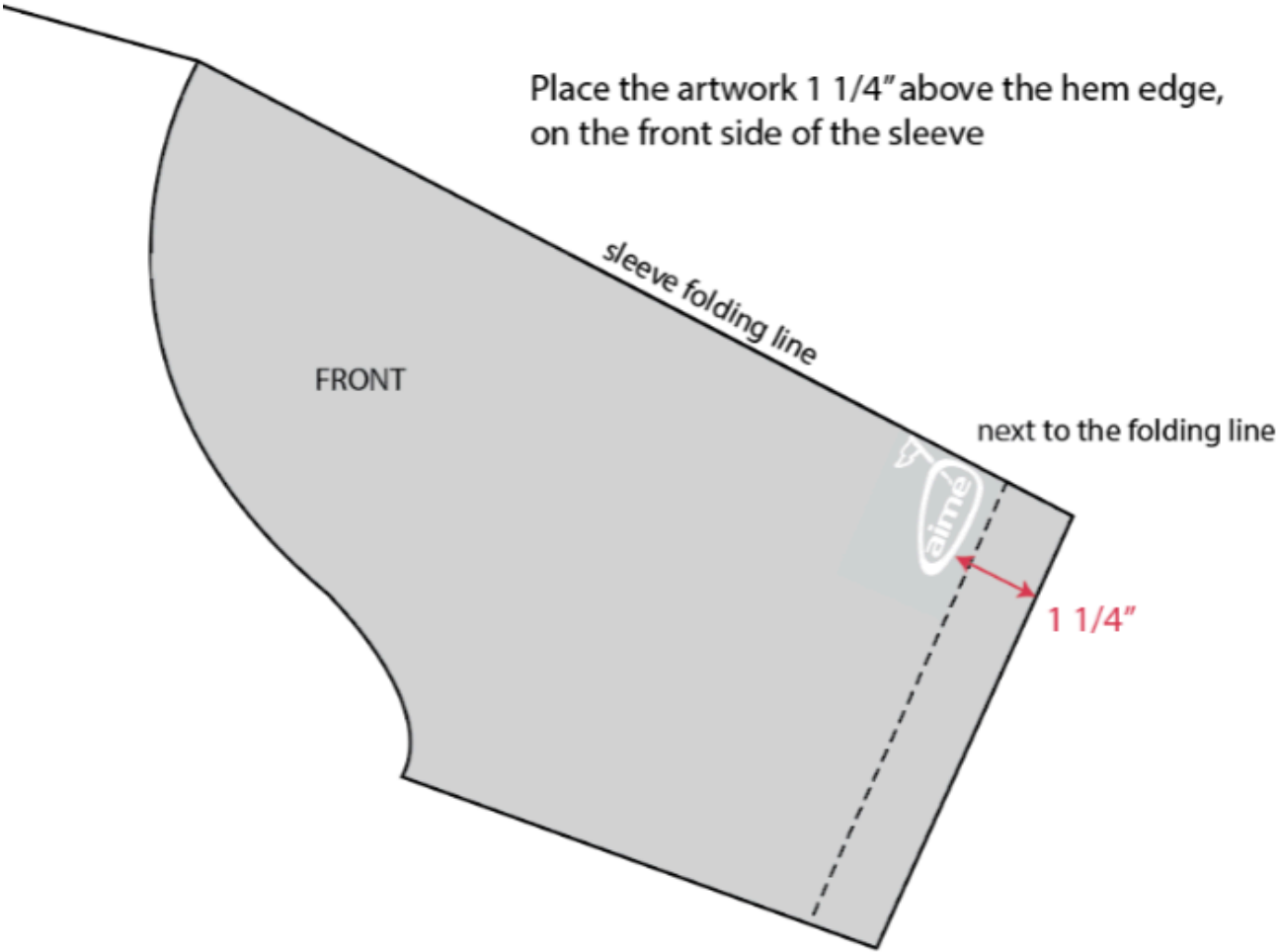
Fit reference image.jpg

## CB label construction

- Insert the label into the cut out window



CB label construction.jpg



sleeve artwork pos..jpg



COMPONENT		QTY	1. NO COLOR ASSIGNED
1	<b>IN DEV</b> CODE: TBD Placement: BODY / COLLAR SLEEVES / POCKET BAGS Notes: TBD BODY QUALITY; PLEASE FOLLOW REFERENCE CUTTING AND SEND COMPARABLE OPTIONS FOR APPROVAL		Not used
2	<b>IN DEV</b> CODE: TBD Placement: LINING @ INTERIOR BODY Notes: TBD MESH QUALITY; PLEASE FOLLOW REFERENCE CUTTING AND SEND COMPARABLE OPTIONS FOR APPROVAL		Not used
3	<b>YKK COIL CLOSED END ZIPPER</b> CODE: TBD Placement: @ CF Supplier: YKK Country of Origin: China		Not used SIZE: 5GG
4	<b>YKK Zipper Tape</b> CODE: YKK Placement: @ CF ZIPPER		Not used
5	<b>YKK DSYG Zipper Slider</b> CODE: DSYG Placement: @ CF ZIPPER		Not used
6	<b>YKK INVISIBLE ZIPPER</b> CODE: TBD Placement: @ FRONT CHEST POCKET Notes: TEARDROP SLIDER Supplier: YKK		Not used SIZE: 3GG
7	<b>YKK Zipper Tape</b> CODE: YKK Placement: @ FRONT CHEST POCKET ZIPPER		Not used
8	<b>ALD Golf Hat Label (Small)</b> CODE: 2024100016 Placement: @ BACK YOKE Supplier: Shining		Not used
9	<b>ARTWORK</b> CODE: AS CORRESPONDING FILE Placement: @ W/L LOWER LEFT SLEEVE Notes: TBD A/W Supplier: Factory Sourced		Not used
10	<b>ARTWORK</b> CODE: AS CORRESPONDING FILE Placement: @ W/L ZIPPER Notes: TBD A/W Supplier: Factory Sourced		Not used
Components		10	Total 0.00