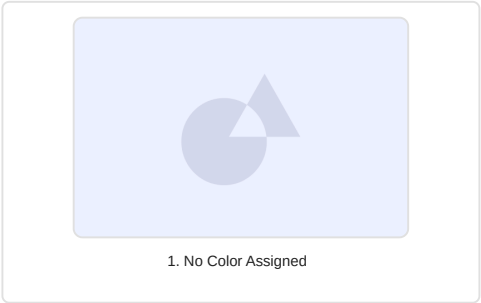


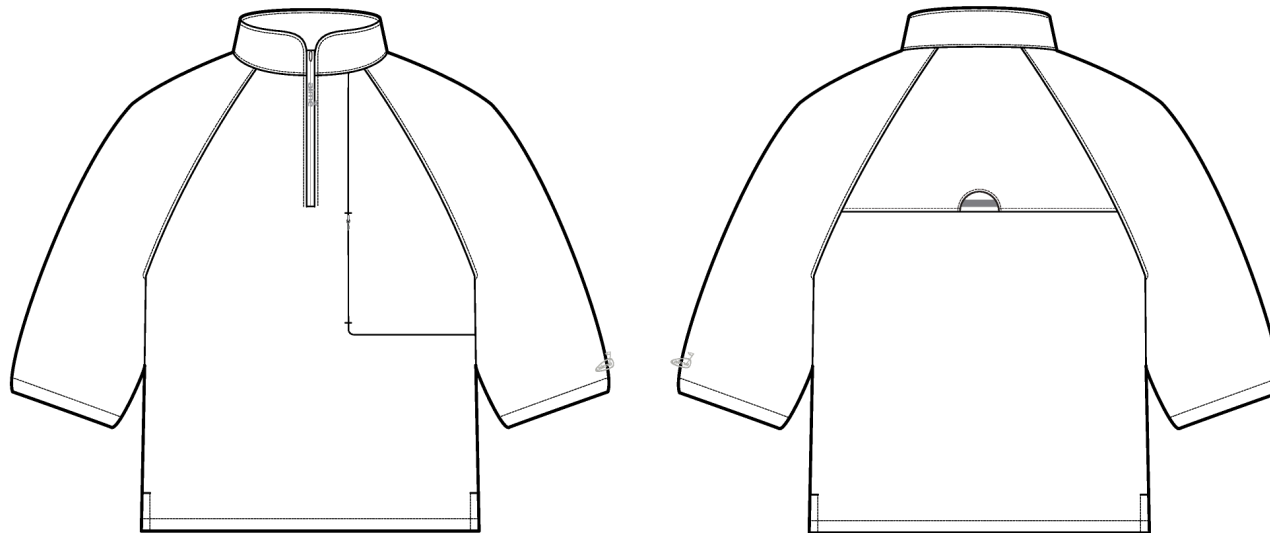
Golf Quarter Zip

Name	Golf Quarter Zip
Style No.	SS26WJ036
Division	Mens
Category	Outerwear
Season	Spring/Summer
Year	2026
Size Scale	M -Sample size

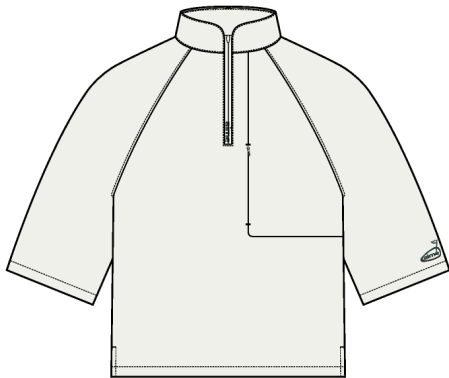
XS S M L XL XXL

Designer Name	Quinton
Created by/Author	4/22/2025 Cristina Loukopoulos cristina@aimeleondore.com





01\_BLACK AND WHITE SKETCH-1



COCONUT MILK



PINE GROVE



NAVAL ACADEMY

02\_COLOR-1

FABRIC / TRIM LEGEND:

FABRIC LEGEND:

SELF FABRIC OPTION A: AT BODY / COLLAR / SLEEVES /  
POCKET BAGS  
MILL: LEVERSTYLE  
ARTICLE NUMBER: 1WTT008220184  
QUANTITY: FTY TO ADVISE

CONTRAST MESH LINING: AT INTERIOR BODY  
MILL: LEVER  
ARTICLE NUMBER: 1KAK001220002  
QUANTITY: FTY TO ADVISE

TRIM LEGEND:

CF ZIPPER TAPE: AT CF  
VENDOR: YKK  
ARTICLE NUMBER: YKK - COLOR TBD  
QUANTITY: 01

CF ZIPPER SLIDER: AT CF  
VENDOR: YKK  
ARTICLE NUMBER: YKK #5 DSYG  
QUANTITY: 01

CF ZIPPER TEETH: AT CF  
VENDOR: YKK  
ARTICLE NUMBER: YKK #5 COIL CLOSED END ZIPPER  
QUANTITY: 01

ZIPPER TAPE: AT FRONT CHEST POCKET  
VENDOR: YKK  
ARTICLE NUMBER: YKK - COLOR TBD  
QUANTITY: 01

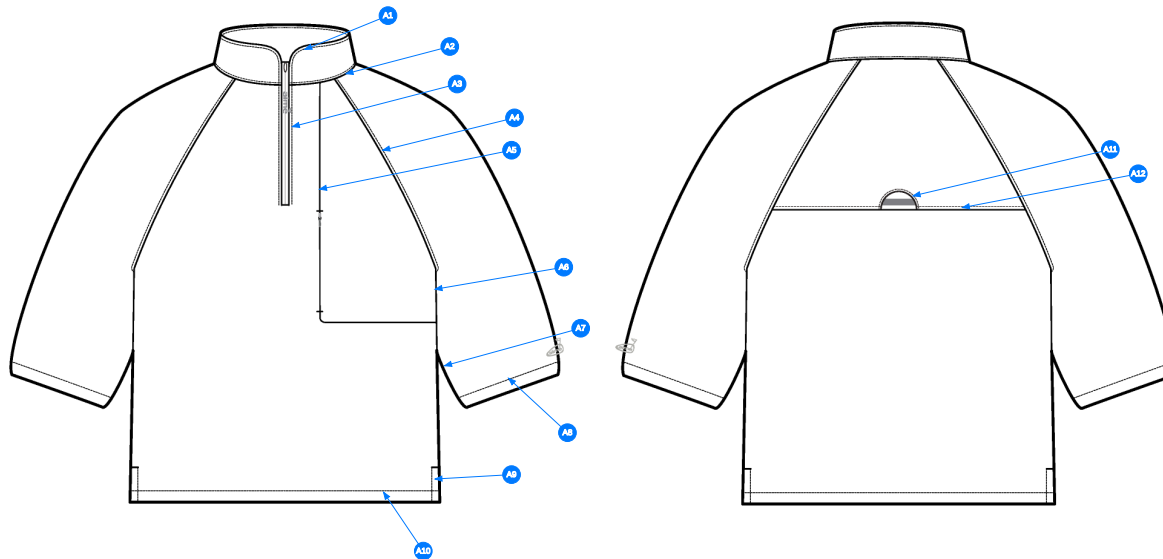
ZIPPER SLIDER: AT FRONT CHEST POCKET  
VENDOR: YKK  
ARTICLE NUMBER: YKK #3 INVISIBLE TEARDROP ZIPPER  
QUANTITY: 01

ZIPPER TEETH: AT FRONT CHEST POCKET  
VENDOR: YKK  
ARTICLE NUMBER: YKK #3 INVISIBLE ZIPPER  
QUANTITY: 01

ALD GOLF HAT LABEL: SET-IN LABEL @ BACK YOKE  
VENDOR: SHINING  
ARTICLE NUMBER: 2024100016  
QUANTITY: 01

ARTWORK: WL LOWER LEFT SLEEVE  
VENDOR: FTY SOURCED  
ARTICLE NUMBER: TBD  
QUANTITY: 01

TBD ARTWORK: AT WL ZIPPER  
VENDOR: TBD  
ARTICLE NUMBER: TBD  
QUANTITY: 01



Comments (12)

- A1 EDGESTITCH @ COLLAR
- A2 EDGESTITCH @ NECK SEAM
- A3 EDGESTITCH @ CF ZIPPER
- A4 EDGESTITCH @ RAGLAN SLEEVES
- A5 CLEAN FINISH @ CHEST POCKET SEAM
- A6 EDGESTITCH @ SIDE SEAM
- A7 EDGESTITCH @ SLEEVE SEAM
- A8 1" SN TS @ SLEEVE HEM
- A9 1/4" SN TS @ SIDE VENT W/ BARTACK REINFORCEMENT
- A10 1" SN TS @ HEM
- A11 EDGESTITCH @ BACK YOKE SET-IN LABEL
- A12 EDGESTITCH @ BACK YOKE

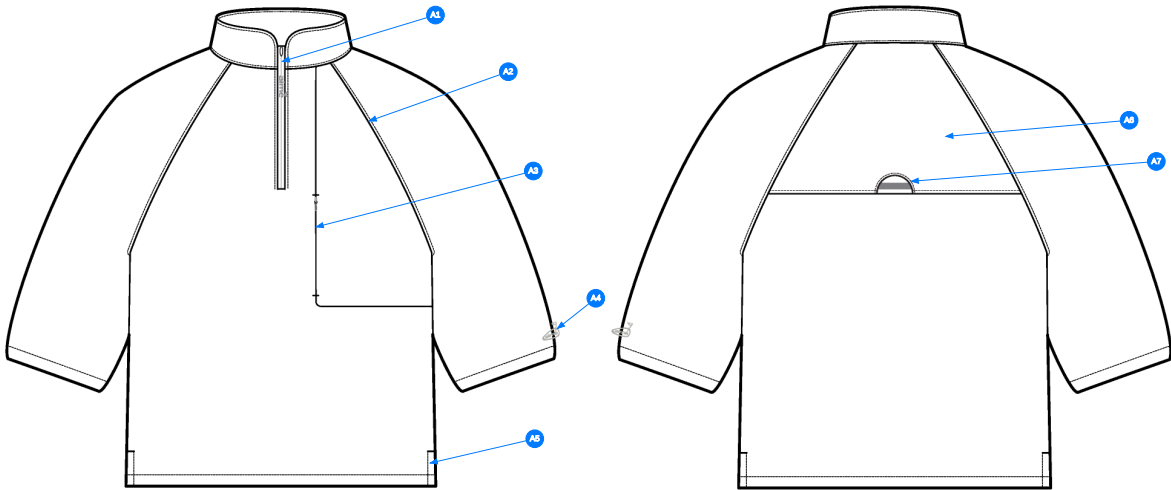
1. mí điều tại lá cổ
2. mí điều tại đường may cổ
3. mí điều dây kéo giữa trước
4. mí điều tại đường may raglan tay
5. may sạch tại đường may túi ngực
6. mí điều tại đường may sườn
7. mí điều tại đường may tay
8. điều 1 kim 1" tại lai tay
9. điều 1 kim 1/4" tại xẻ tà với bộ đỉnh xẻ tà
10. điều 1 kim 1" tại lai áo
11. mí điều tại nhãn đồ sau
12. mí điều tại đồ sau

04\_STITCH DETAIL-1

Comments (7)

- A1 REVERSE COIL ZIPPER @ CF - PRINTED ARTWORK AT ZIPPER TAPE
- A2 RAGLAN SLEEVE CONSTRUCTION
- A3 INVISIBLE ZIPPER POCKET @ WL CHEST POCKET
- A4 DIRECT EMBROIDERY @ WL SLEEVE HEM
- A5 VENT CONSTRUCTION @ SIDE SEAM HEM
- A6 BACK YOKE CONSTRUCTION
- A7 BRANDED SET-IN LABEL @ CENTE BACK YOKE - SEE CALLOUT PAGE FOR DETAILS

- 1. dây kéo tại giữa trước
- 2. cấu trúc tay raglan
- 3. dây kéo ẩn tại túi ngực trái
- 4. hình thêu tại lai tay trái
- 5. xẻ tà tại đường may sườn
- 6. cấu trúc đô sau
- 7. nhãn tại giữa đô sau



05\_CONSTRUCTION DETAIL-1

ARTWORK PAGE

- ARTWORK IS TECHNIQUE IS DIRECT EMBROIDERY



COCONUT MILK COLORWAY



 SERAFIL: #TBD

PINE GROVE COLORWAY



 SERAFIL: #TBD

NAVAL ACADEMY COLORWAY



 SERAFIL: #TBD

07\_DETAIL-1



ARTWORK PAGE

- ARTWORK IS TECHNIQUE IS DIRECT EMBROIDERY



COCONUT MILK COLORWAY



 SERAFIL: #TBD

PINE GROVE COLORWAY



 SERAFIL: #TBD

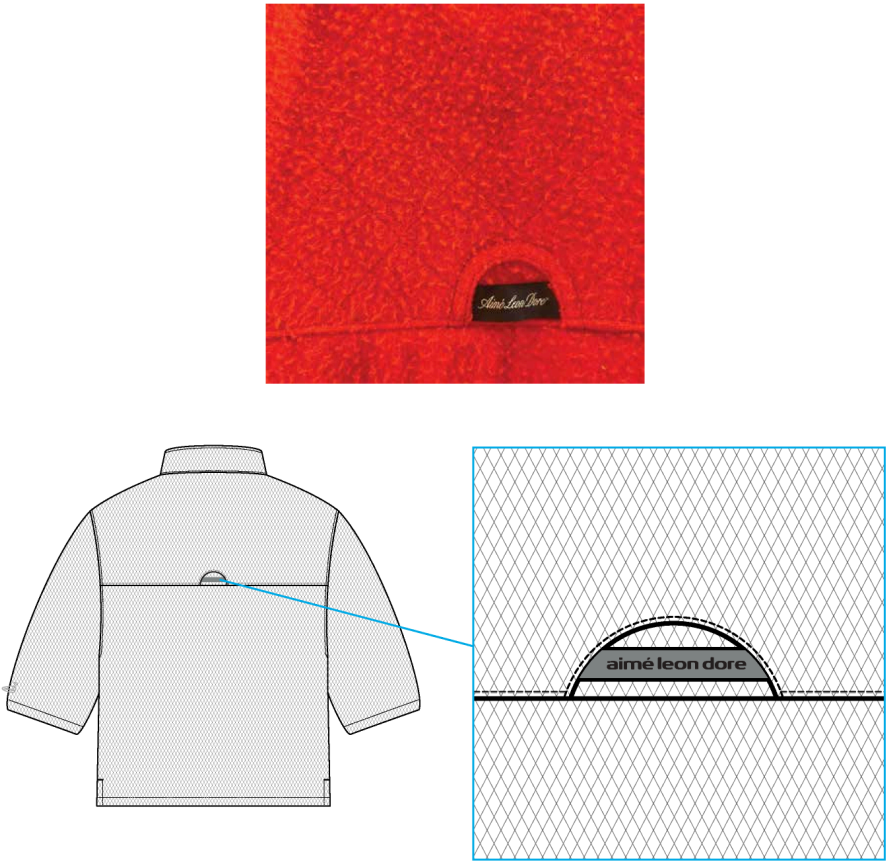
NAVAL ACADEMY COLORWAY



 SERAFIL: #TBD

08\_DETAIL-1

SET IN LABEL DETAIL VIEW



Artboard 1 copy 10-1

Sample Size: M

POINT OF MEASURE	CODE	HOW TO MEASURE	CRITICAL	TYPE	TOLERANCE	M
FRONT BODY LENGTH	WV001	FROM HPS TO BOTTOM EDGE	true	Full	1/2 in	27 1/2 in
BACK BODY LENGTH	WV002	FROM CB NECK SEAM TO BOTTOM EDGE	true	Full	1/2 in	26 7/8 in
CF ZIPPER LENGTH	WV003	FROM ZIPPER TIP TO TIP	true	Full	1/4 in	8 1/4 in
FRONT NECK DROP	WV004	FROM HPS LEVEL STRAIGHT DOWN TO CF NECK SEAM	true	Full	1/8 in	3 3/4 in
BACK NECK DROP	WV005	FROM HPS LEVEL STRAIGHT DOWN TO CB NECK SEAM	true	Full	1/8 in	5/8 in
BACK NECK WIDTH	WV006	FROM SEAM TO SEAM AT BACK PANEL HPS LEVEL	true	Full	1/4 in	7 in
SHOULDER SLOPE - RAGLAN	WVRAG	MEAS. AT IMAG. SHOUDLER POINT 9 1/2" FROM CB, FTY GRADE POS. FOR ALL OTHER SIZES	true	Full	1/8 in	2 in
FRONT RAGLAN SEAM FORWARD FROM HPS	WV		false	Full	1/8 in	2 1/2 in
BACK RAGLAN SEAM BACKWARD FROM HPS	WV		false	Full	1/8 in	2 1/4 in
ACROSS FRONT	WV010	MEASURE FROM A/H SEAM TO SEAM, 7" FROM HPS FOR M SIZE, FACTORY GRADE POS. FOR ALL OTHER SIZES	true	Full	1/4 in	14 1/2 in
ACROSS BACK	WV011	MEASURE FROM A/H SEAM TO SEAM, 7" FROM HPS FOR M SIZE, FACTORY GRADE POS. FOR ALL OTHER SIZES	true	Full	1/4 in	15 1/2 in
CHEST CIRCUMFERENCE	WV012	MEASURE 1" BELOW ARMHOLE	true	Full	1/2 in	45 in
BOTTOM OPENING CIRCUMFERENCE	WV	MEASURE AT BOTTOM HEM EDGE	true	Full	1/2 in	45 in
ARMHOLE DROP	WV017	FROM HPS LEVEL STRAIGHT DOWN TO UNDERARM SEAM	true	Full	1/4 in	12 in
BICEP CIRCUMFERENCE	WV018	MEASURE AT 1" BELOW ARMHOLE	true	Full	1/4 in	19 1/2 in
SLEEVE OPENING CIRCUMFERENCE	WV		true	Full	1/4 in	16 1/4 in
SLEEVE LENGTH	WV026	3PT MEAS. FROM CB NECK, ARMHOLE TO SLEEVE HEM EDGE	true	Full	1/2 in	22 1/2 in
COLLAR HEIGHT AT CB	WV023		false	Full	1/8 in	2 1/4 in
COLLAR LENGTH ALONG TOP EDGE	EJpPnF	FROM COLLAR TOP EDGE TO TOP EDGE	false	Full	1/4 in	16 3/4 in
W/L CHEST INSET POCKET POSITION FROM TRUE CF	WV		false	Full	1/8 in	1 1/4 in
W/L CHEST INSET POCKET HEIGHT AT SIDE BY CF	FwbmVn		false	Full	1/4 in	12 1/2 in
W/L CHEST INSET POCKET ZIPPER LENGTH	A4gO4I		false	Full	1/4 in	6 in
BACK YOKE HEIGHT AT CB	WVYOKE	FROM CB NECK SEAM TO YOKE SEAM	false	Full	1/4 in	8 in
SIDE SLIT LENGTH	rY53dZ		false	Full	1/8 in	2 1/2 in
W/L SLEEVE EMB. ARTWORK POSITION ABOVE THE SLEEVE HEM EDGE	30ElmQ		false	Full	1/8 in	1 1/4 in

## Development - Hyeyoung Cho

CREATED ON APR 21, 2025 4:51 PM

Date : 4/21/25

TD : Hyeyoung Cho

Status : Submit 1st Proto

Development notes :

1. Create a pattern following sketches and spec.
2. See diagram for sleeve artwork position and CB inserted label construction.

1. làm rập theo sketch và thông số

2. xem sketch cho vị trí artwork ở tay và cấu trúc may nhãn đồ sau

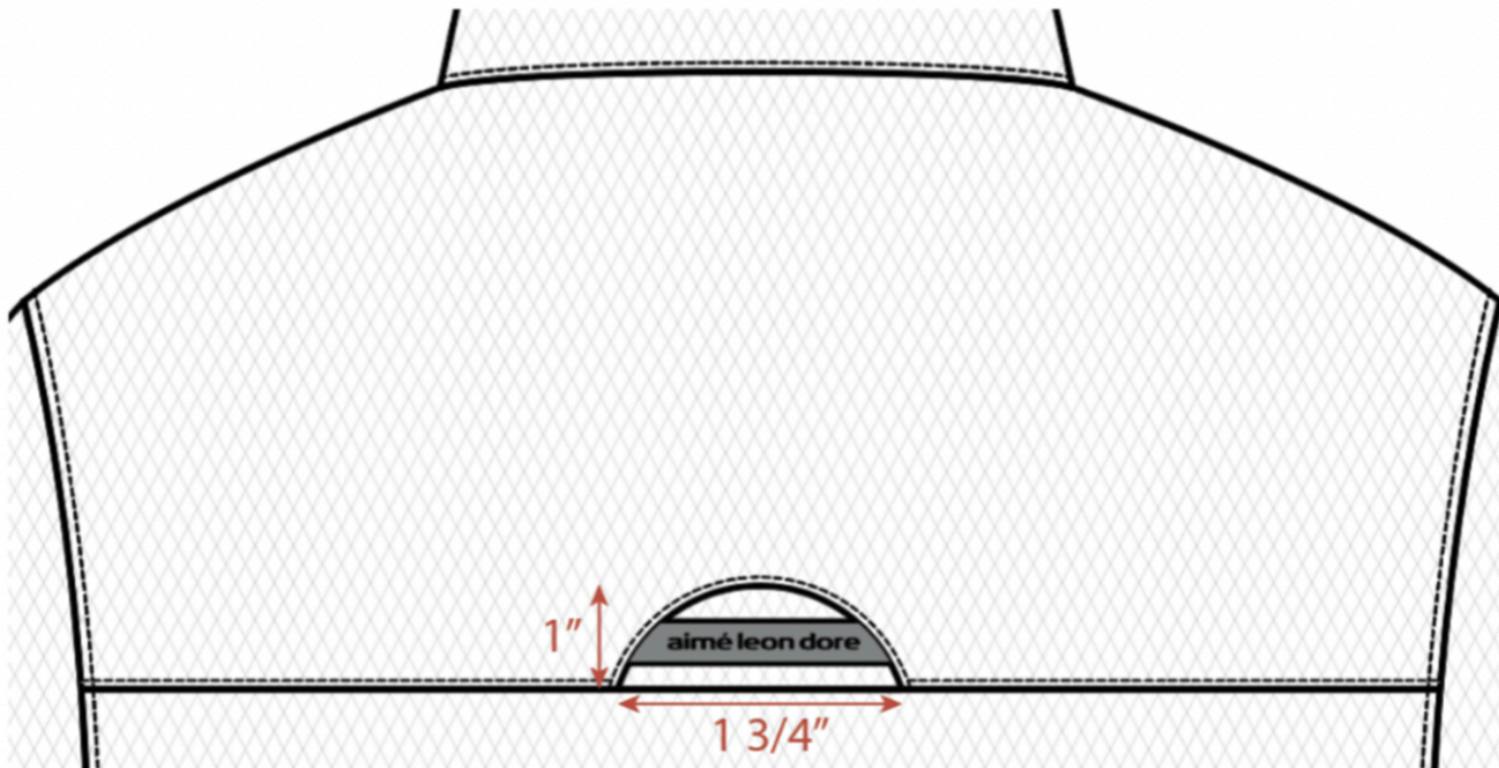


Fit reference image.jpg

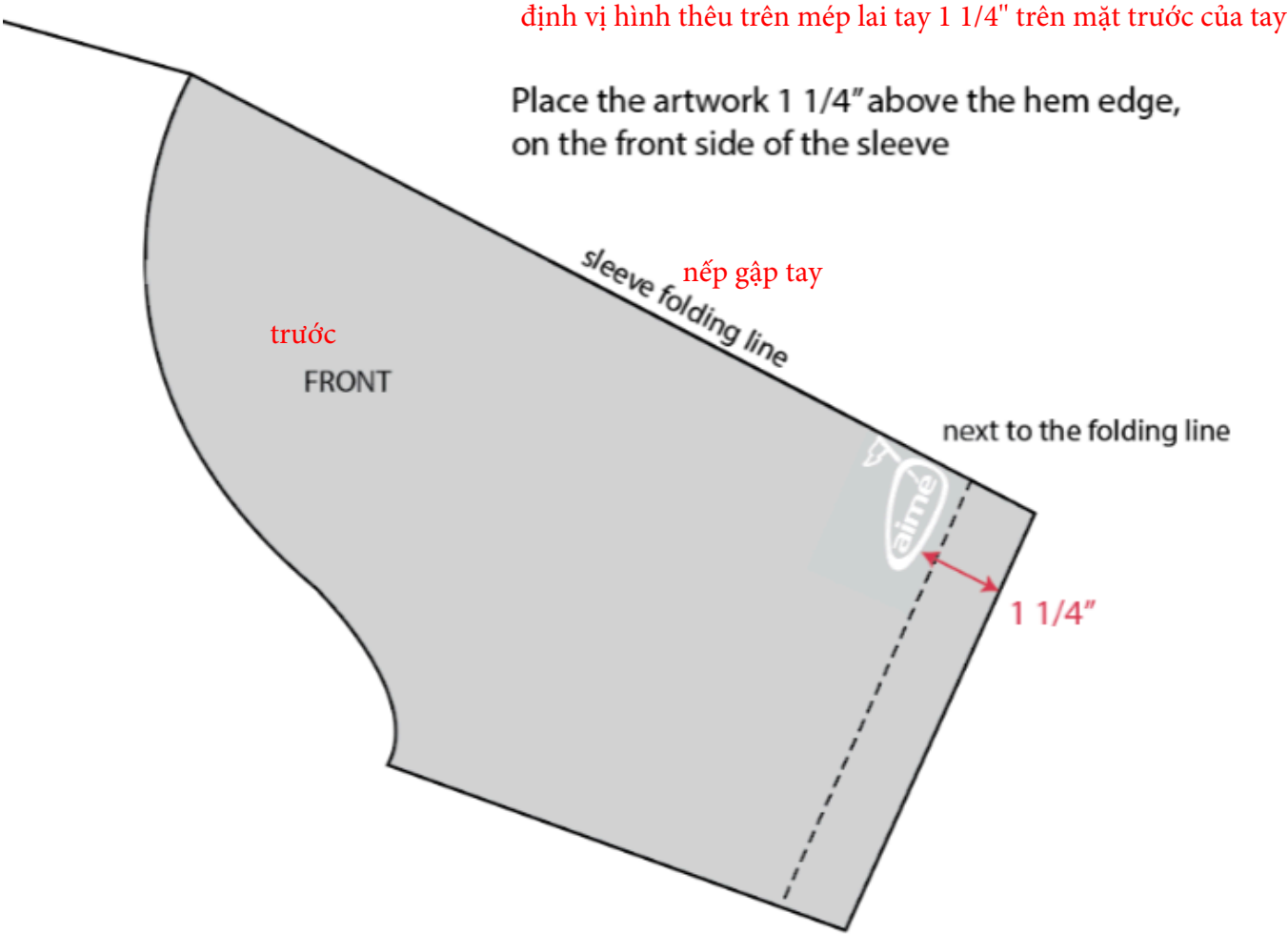
cấu trúc nhãn thân sau

## CB label construction

- Insert the label into the cut out window chèn nhãn vào đồ sau như sketch



CB label construction.jpg



sleeve artwork pos..jpg



COMPONENT		QTY	1. NO COLOR ASSIGNED
1	<b>IN DEV</b> CODE: TBD Placement: BODY / COLLAR SLEEVES / POCKET BAGS Notes: TBD BODY QUALITY; PLEASE FOLLOW REFERENCE CUTTING AND SEND COMPARABLE OPTIONS FOR APPROVAL		Not used
2	<b>IN DEV</b> CODE: TBD Placement: LINING @ INTERIOR BODY Notes: TBD MESH QUALITY; PLEASE FOLLOW REFERENCE CUTTING AND SEND COMPARABLE OPTIONS FOR APPROVAL		Not used
3	<b>YKK COIL CLOSED END ZIPPER</b> CODE: TBD Placement: @ CF Supplier: YKK Country of Origin: China		Not used SIZE: 5GG
4	<b>YKK Zipper Tape</b> CODE: YKK Placement: @ CF ZIPPER		Not used
5	<b>YKK DSYG Zipper Slider</b> CODE: DSYG Placement: @ CF ZIPPER		Not used
6	<b>YKK INVISIBLE ZIPPER</b> CODE: TBD Placement: @ FRONT CHEST POCKET Notes: TEARDROP SLIDER Supplier: YKK		Not used SIZE: 3GG
7	<b>YKK Zipper Tape</b> CODE: YKK Placement: @ FRONT CHEST POCKET ZIPPER		Not used
8	<b>ALD Golf Hat Label (Small)</b> CODE: 2024100016 Placement: @ BACK YOKE Supplier: Shining		Not used
9	<b>ARTWORK</b> CODE: AS CORRESPONDING FILE Placement: @ W/L LOWER LEFT SLEEVE Notes: TBD A/W Supplier: Factory Sourced		Not used
10	<b>ARTWORK</b> CODE: AS CORRESPONDING FILE Placement: @ W/L ZIPPER Notes: TBD A/W Supplier: Factory Sourced		Not used
Components		10	Total 0.00