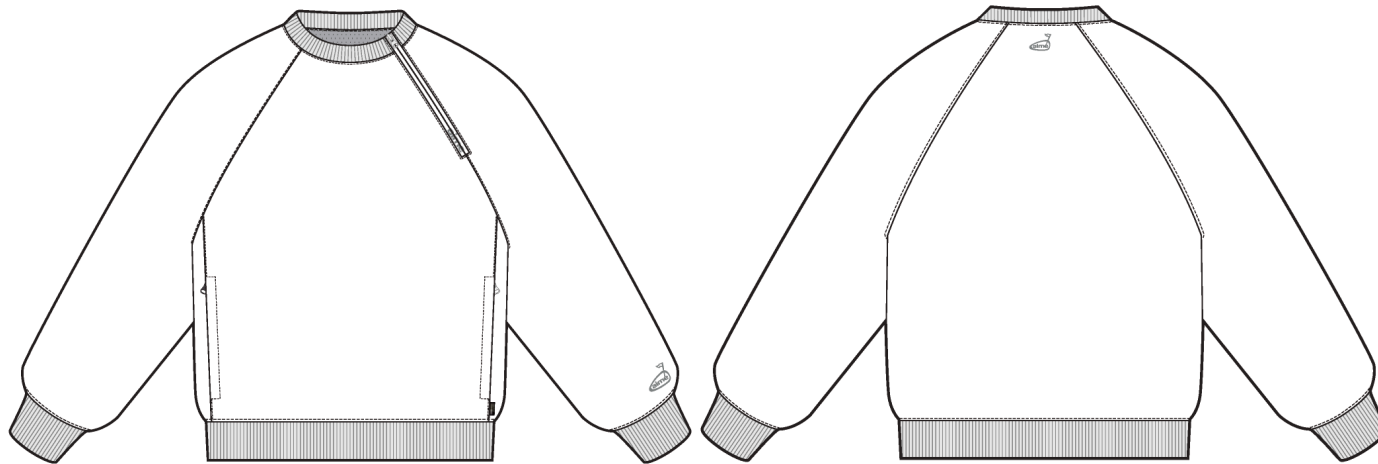


Printed Golf Cordura Popover

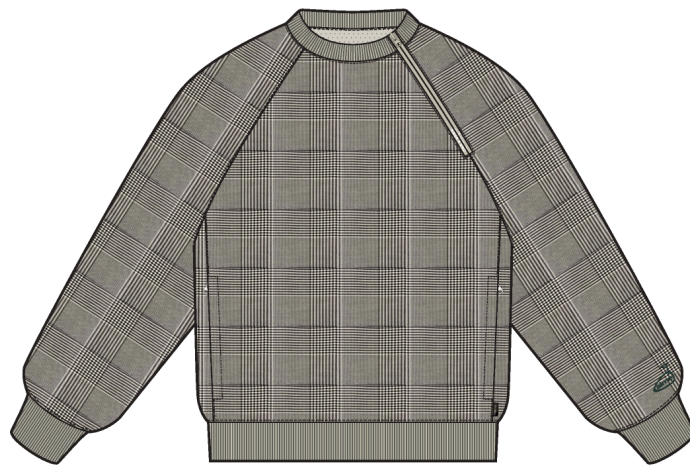
Name	Printed Golf Cordura Popover
Style No.	SS26WJ037
Division	Mens
Category	Outerwear
Season	Spring/Summer
Year	2026
Size Scale	M -Sample size

☐XS☒S☐M☐L☐XL☐XXL

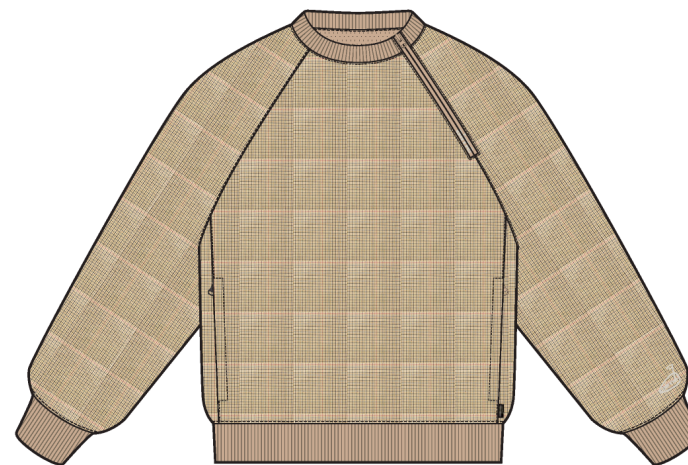
Designer Name	Quinton
Created by/Author	4/29/2025 Cristina Loukopoulos cristina@aimeleondore.com



01_BLACK AND WHITE SKETCH-1

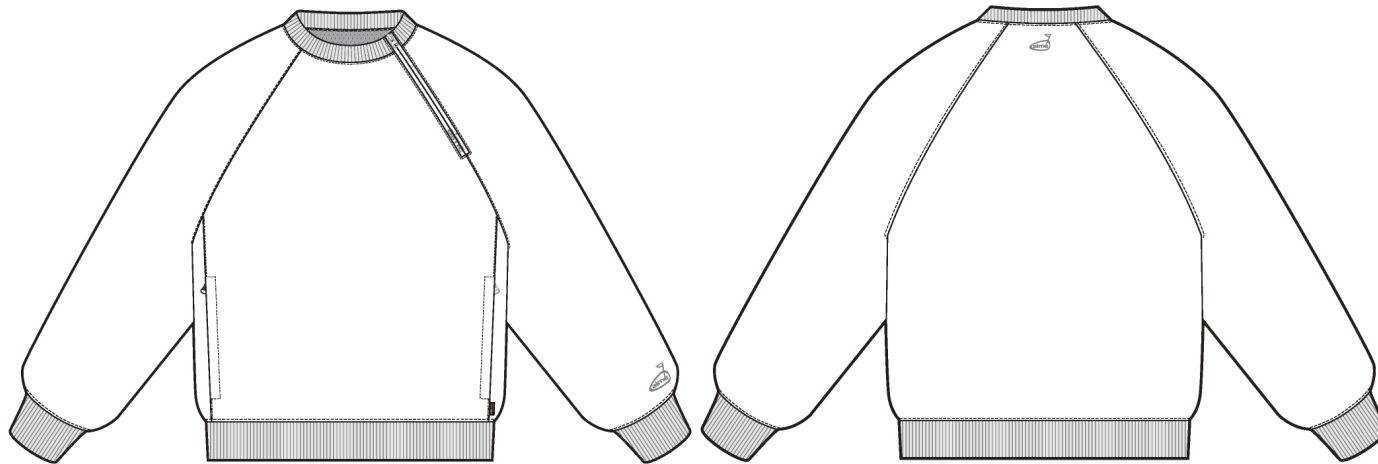


GLEN PLAID - #1

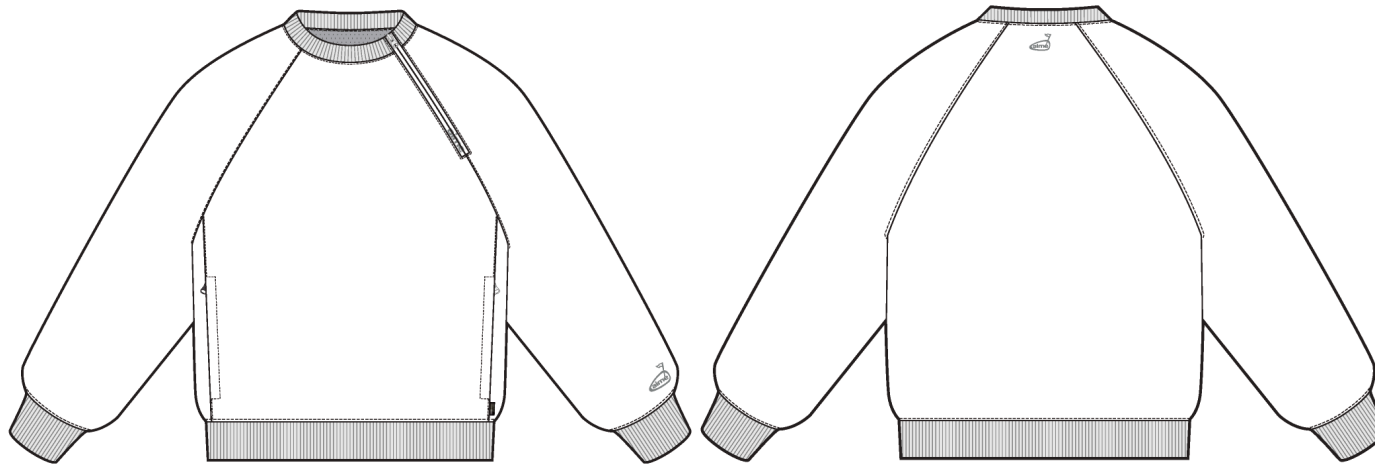


TATTERSAIL - #4

02_COLOR-1

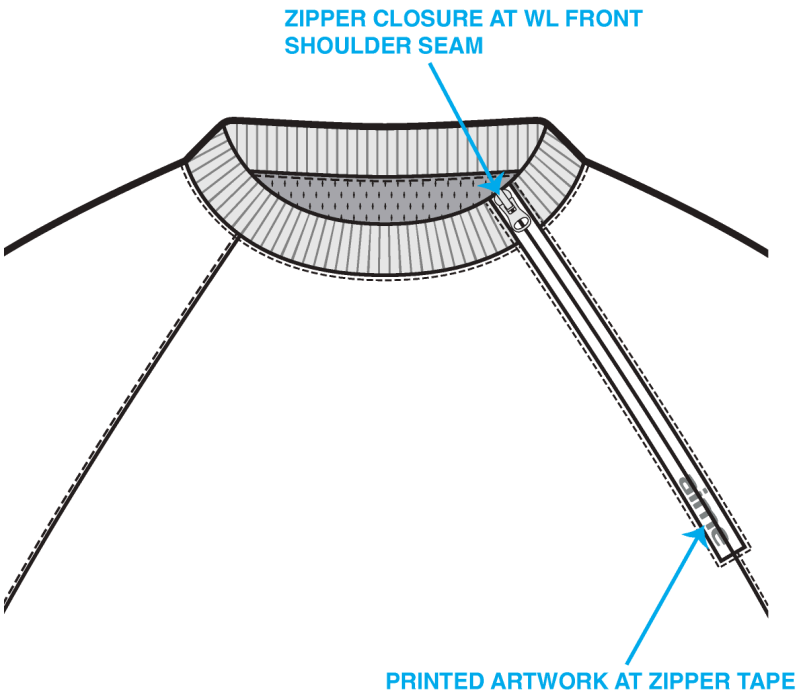


04_STITCH DETAIL-1



05_CONSTRUCTION DETAIL-1

FRONT SHOULDER ZIPPER DETAIL VIEW

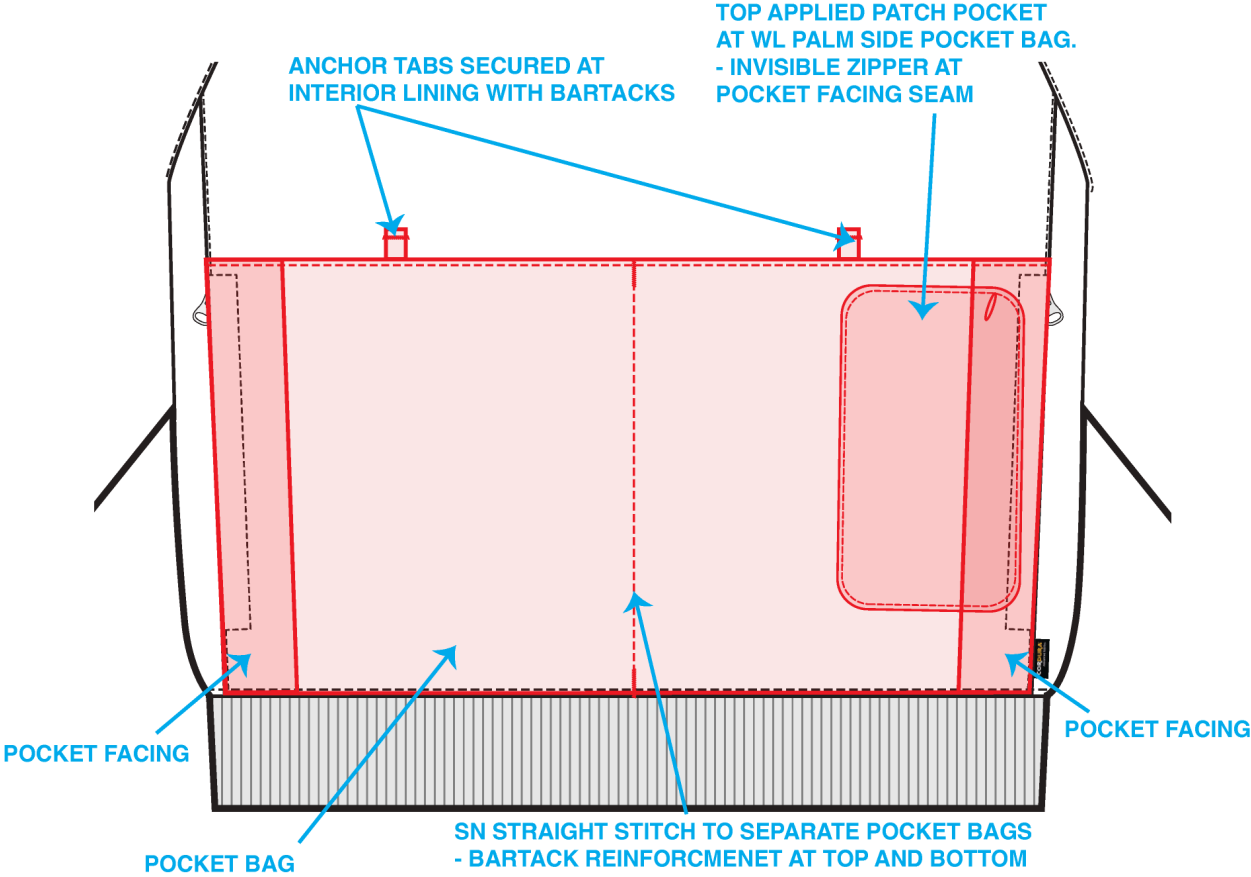


REFERENCE IMAGE



06_DETAIL-1

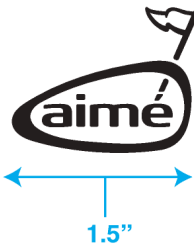
FRONT POCKET DETAIL VIEW



07_DETAIL-1

ARTWORK PAGE

- ARTWORK TECHNIQUE IS DIRECT EMBROIDERY
AT BOTH WL SLEEVE CUFF AND CB NECK



GLEN PLAID COLORWAY



SERAFIL: #7863

TATTERSAIL COLORWAY



SERAFIL: #7863

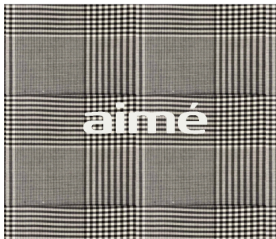
08_DETAIL-1

ARTWORK PAGE

- ARTWORK TECHNIQUE IS DIGITAL PRINT
- OPTION #1: PRINTED ON REVERSE COIL ZIPPER TAPE
- OPTION #2: PRINTED ON SELF FABRIC DOUBLE WELT



GLEN PLAID ZIPPER TAPE COLORWAY



COCONUT MILK (11-0608 TCX)

TATTERSAIL ZIPPER TAPE COLORWAY



COCONUT MILK (11-0608 TCX)

09_DETAIL-1

Sample Size: M

POINT OF MEASURE	CODE	HOW TO MEASURE	CRITICAL	TYPE	TOLERANCE	M
FRONT BODY LENGTH	WV001	FROM HPS TO BOTTOM EDGE	true	Full	1/2 in	27 in
BACK BODY LENGTH	WV002	FROM CB NECK SEAM TO BOTTOM EDGE	true	Full	1/2 in	26 1/8 in
FRONT NECK DROP	WV004	FROM HPS LEVEL STRAIGHT DOWN TO CF NECK SEAM	true	Full	1/8 in	4 1/4 in
BACK NECK DROP	WV005	FROM HPS LEVEL STRAIGHT DOWN TO CB NECK SEAM	true	Full	1/8 in	7/8 in
BACK NECK WIDTH	WV006	FROM SEAM TO SEAM AT BACK PANEL	true	Full	1/4 in	7 3/4 in
FRONT RAGLAN SEAM FORWARD FROM HPS	WV		false	Full	1/8 in	2 1/2 in
BACK RAGLAN SEAM BACKWARD FROM HPS	WV		false	Full	1/8 in	1 3/4 in
SHOULDER SLOPE - RAGLAN	WVRAG	MEAS. AT IMAG. SHOUDLER POINT 9 1/2" FROM CB, FTY GRADE POS. FOR ALL OTHER SIZES	true	Full	1/8 in	2 1/4 in
ACROSS FRONT	WV010	MEASURE FROM A/H SEAM TO SEAM, 7" FROM HPS FOR M SIZE, FACTORY GRADE POS. FOR ALL OTHER SIZES	true	Full	1/4 in	14 1/4 in
ACROSS BACK	WV011	MEASURE FROM A/H SEAM TO SEAM, 7" FROM HPS FOR M SIZE, FACTORY GRADE POS. FOR ALL OTHER SIZES	true	Full	1/4 in	16 3/8 in
CHEST CIRCUMFERENCE	WV012	MEASURE 1" BELOW ARMHOLE	true	Full	1/2 in	49 1/2 in
BOTTOM OPENING CIRCUMFERENCE, STRETCHED	WV014	MEASURE AT BOTTOM HEM SEAM, STRETCHED	true	Full	1/2 in	45 in
BOTTOM OPENING CIRCUMFERENCE, RELAXED	WV015	MEASURE AT BOTTOM EDGE, RELAXED	true	Full	1/2 in	36 1/2 in
BOTTOM HEM HEIGHT	WV016		false	Full	1/8 in	2 in
ARMHOLE DROP	WV017	FROM HPS LEVEL STRAIGHT DOWN TO UNDERARM SEAM	true	Full	1/4 in	12 1/2 in
BICEP CIRCUMFERENCE	WV018	MEASURE AT 1" BELOW ARMHOLE	true	Full	1/4 in	19 1/2 in
FOREARM CIRCUMFERENCE	WV019	MEASURE AT 9" ABOVE SLEEVE HEM EDGE	true	Full	1/4 in	15 3/4 in
SLEEVE OPENING CIRCUMFERENCE, STRETCHED	WV020-1	MEASURE AT SLEEVE EDGE	true	Full	1/4 in	12 1/2 in
KNIT RIB SLEEVE OPENING CIRCUMFERENCE, RELAXED	WV020		true	Full	1/4 in	9 3/4 in
SLEEVE HEM HEIGHT	WV021		false	Full	1/8 in	2 in
SLEEVE LENGTH	WV026	3PT MEAS. FROM CB NECK, ARMHOLE TO SLEEVE HEM EDGE	true	Full	1/2 in	35 in
COLLAR RIB WIDTH	WV		false	Full	1/8 in	1 in
FRONT POCKET PLACEMENT UP FROM BOTTOM HEM SEAM	JC015		false	Full	1/8 in	2 in
FRONT POCKET ZIPPER LENGTH	WV		false	Full	1/4 in	7 in
SHOULDER ZIPPER LENGTH	AFC3N9		false	Full	1/4 in	6 in
W/L INTERIOR POCKET BAG ZIPPER LENGTH	pk5Jvf		false	Full	1/4 in	0 in
BACK ARTWORK BELOW CB NECK SEAM	l4bv0s		false	Full	1/16 in	0 in
W/L SLEEVE ARTWORK ABOVE SLEEVE HEM SEAM	jblWwu		false	Full	1/16 in	0 in

Development - Hyeyoung Cho

CREATED ON APR 21, 2025 3:32 PM

Date : 4/21/25

TD : Hyeyoung Cho

Status : Submit 1st Proto

Development notes :

1. Please use the S25WJ033 pattern saved in the folder for overall body silhouette with below adjustments.
2. Shift the side seam forward by 1 1/2", and add on-seam pockets.
3. Change the neck shape following sketch.
4. Change to rib hem at bottom opening.



Fit reference.jpg

COMPONENT		QTY	1. NO COLOR ASSIGNED
1	91-KC-3521 CODE: 91-KC-3521 Placement: BODY / SLEEVES / SIDE BODY PANEL Notes: OPTION 1 Supplier: STYLEM		Not used
2	IN DEV CODE: TBD Placement: LINING @ INTERIOR BODY Notes: TBD 100% POLY MESH QUALITY, AROUND 60 GSM; PLEASE SEND LOCAL OPTIONS FOR APPROVAL		Not used
3	YKK COIL CLOSED END ZIPPER CODE: TBD Placement: @ W/L FRONT SHOULDER SEAM Notes: *REVERSE* Supplier: YKK Country of Origin: China		Not used SIZE: 5GG
4	YKK Zipper Tape CODE: YKK Placement: @ W/L FRONT SHOULDER SEAM ZIPPER		Not used
5	YKK DS6 Zipper Slider CODE: DS6 Placement: @ W/L FRONT SHOULDER SEAM ZIPPER Supplier: YKK		Not used
6	YKK COIL CLOSED END ZIPPER CODE: TBD Placement: 1 @ EACH FRONT HAND POCKET Supplier: YKK Country of Origin: China		Not used SIZE: 5GG
7	YKK Zipper Tape CODE: YKK Placement: 1 @ EACH FRONT HAND POCKET ZIPPER		Not used
8	YKK Branded Zipper Slider CODE: DA8AED01 Placement: 1 @ EACH FRONT HAND POCKET ZIPPER Supplier: YKK Country of Origin: CHINA		Not used
9	IN DEV CODE: TBD Placement: @ EACH SLEEVE HEM / BODY HEM Notes: 1X1 FLAT KNIT TUBULAR RIB; PROCEED WITH LOCAL OPTION FOR APPROVAL		Not used
10	CORDURA LOOP LABEL CODE: CORDURA LOOP LABEL Placement: @ W/L FRONT BODY PANEL SEAM		Not used
11	THREAD CODE: THREAD Placement: @ ENTIRE BODY Notes: 100% POLY THREAD TEX SIZE: T-60 SPI: 8-10 Supplier: Factory Sourced		Not used
12	ARTWORK CODE: AS CORRESPONDING FILE Placement: @ W/L SLEEVE HEM Notes: TBD A/W Supplier: Factory Sourced		Not used
13	ARTWORK CODE: AS CORRESPONDING FILE Placement: @ W/L ZIPPER Notes: TBD A/W Supplier: Factory Sourced		Not used
Components		13	Total 0.00