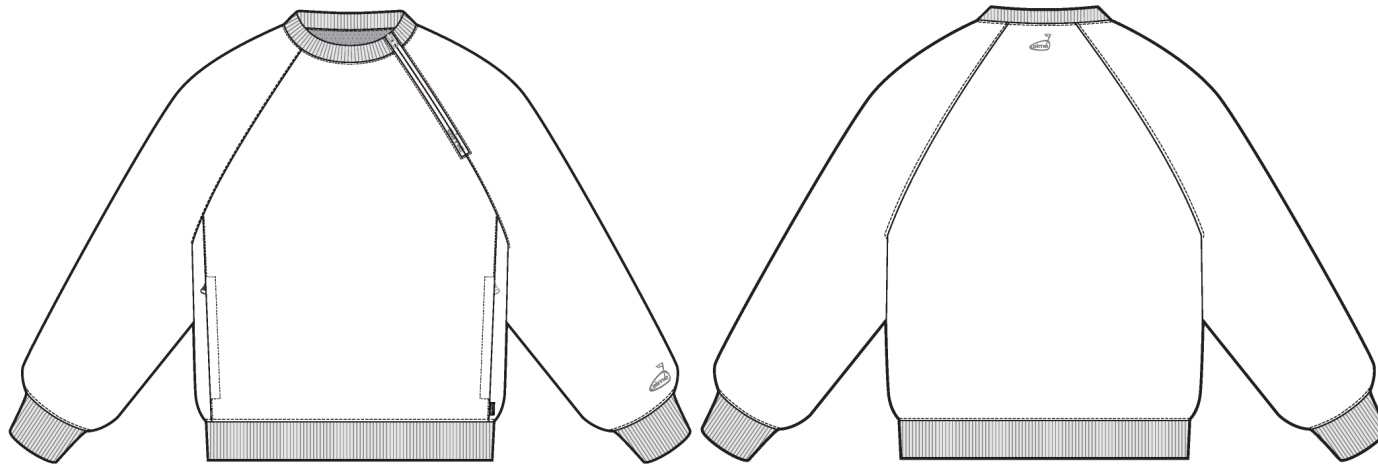


Printed Golf Cordura Popover

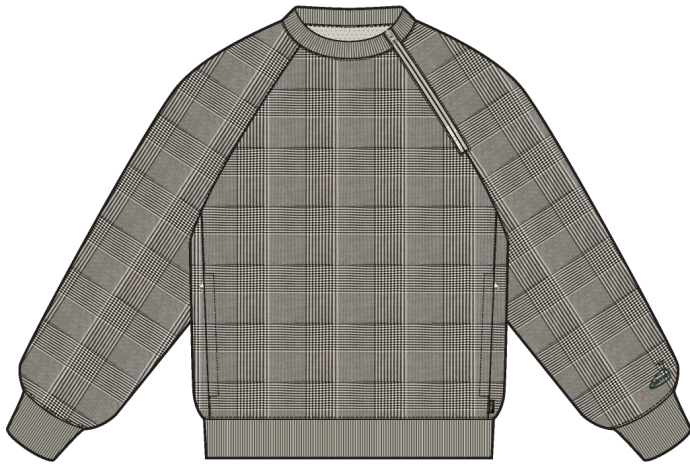
| | |
|------------|------------------------------|
| Name | Printed Golf Cordura Popover |
| Style No. | SS26WJ037 |
| Division | Mens |
| Category | Outerwear |
| Season | Spring/Summer |
| Year | 2026 |
| Size Scale | M -Sample size |

☐XS☐S☒M☐L☐XL☐XXL

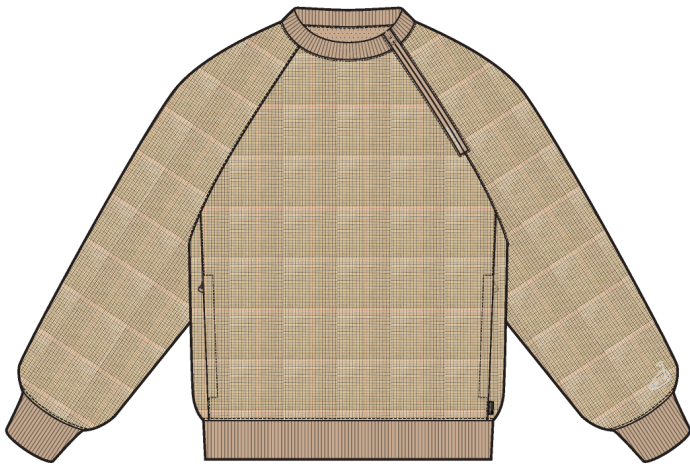
| | |
|-------------------|--|
| Designer Name | Quinton |
| Created by/Author | 4/29/2025 Cristina Loukopoulos cristina@aimeleondore.com |



01_BLACK AND WHITE SKETCH-1

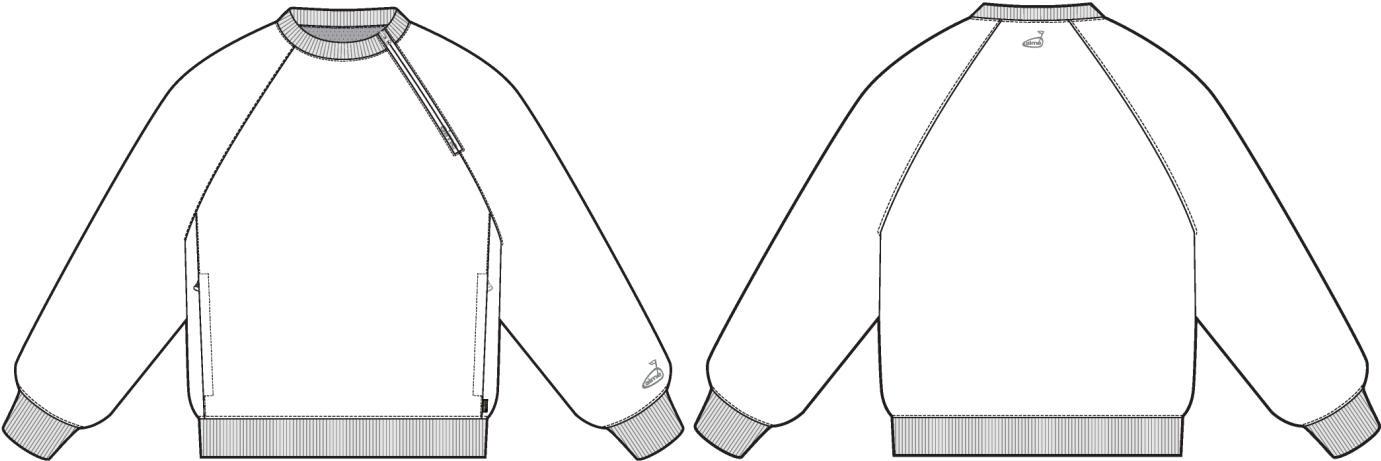


GLEN PLAID - #1

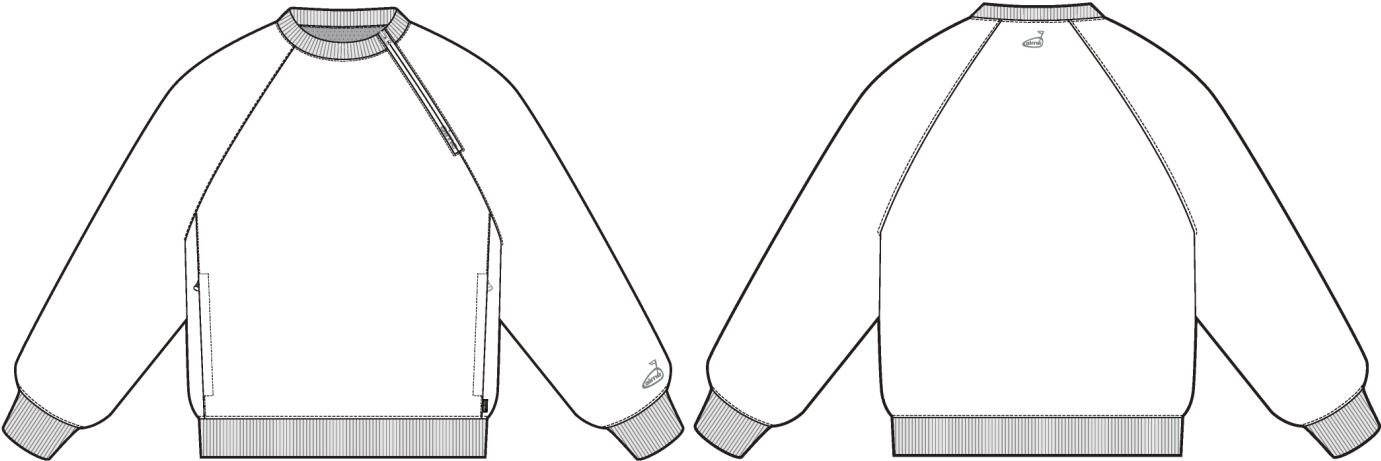


TATTERSAIL - #4

02_COLOR-1



04_STITCH DETAIL-1

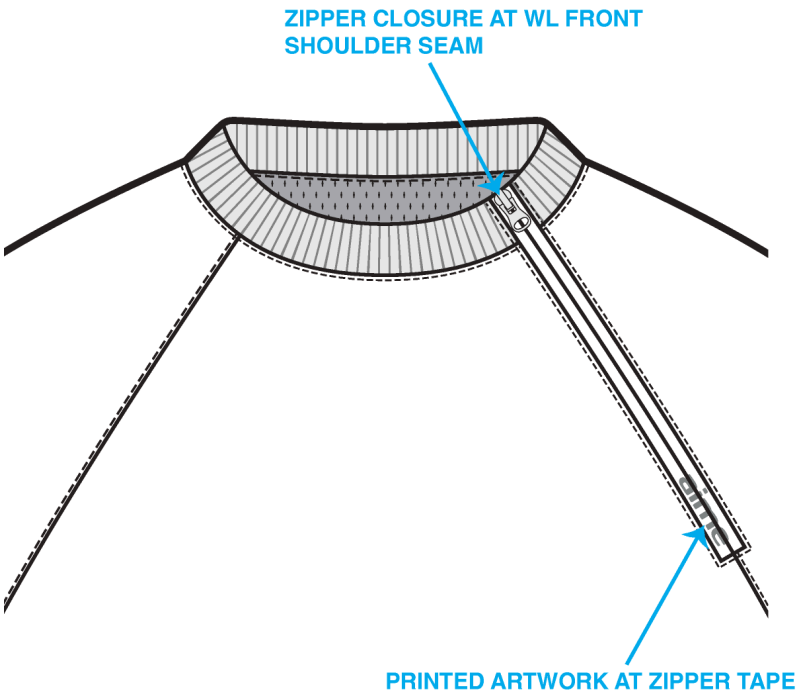


05_CONSTRUCTION DETAIL-1

chi tiết dây kéo vai

FRONT SHOULDER ZIPPER DETAIL VIEW

dây kéo đóng tại đường may vai trái trước



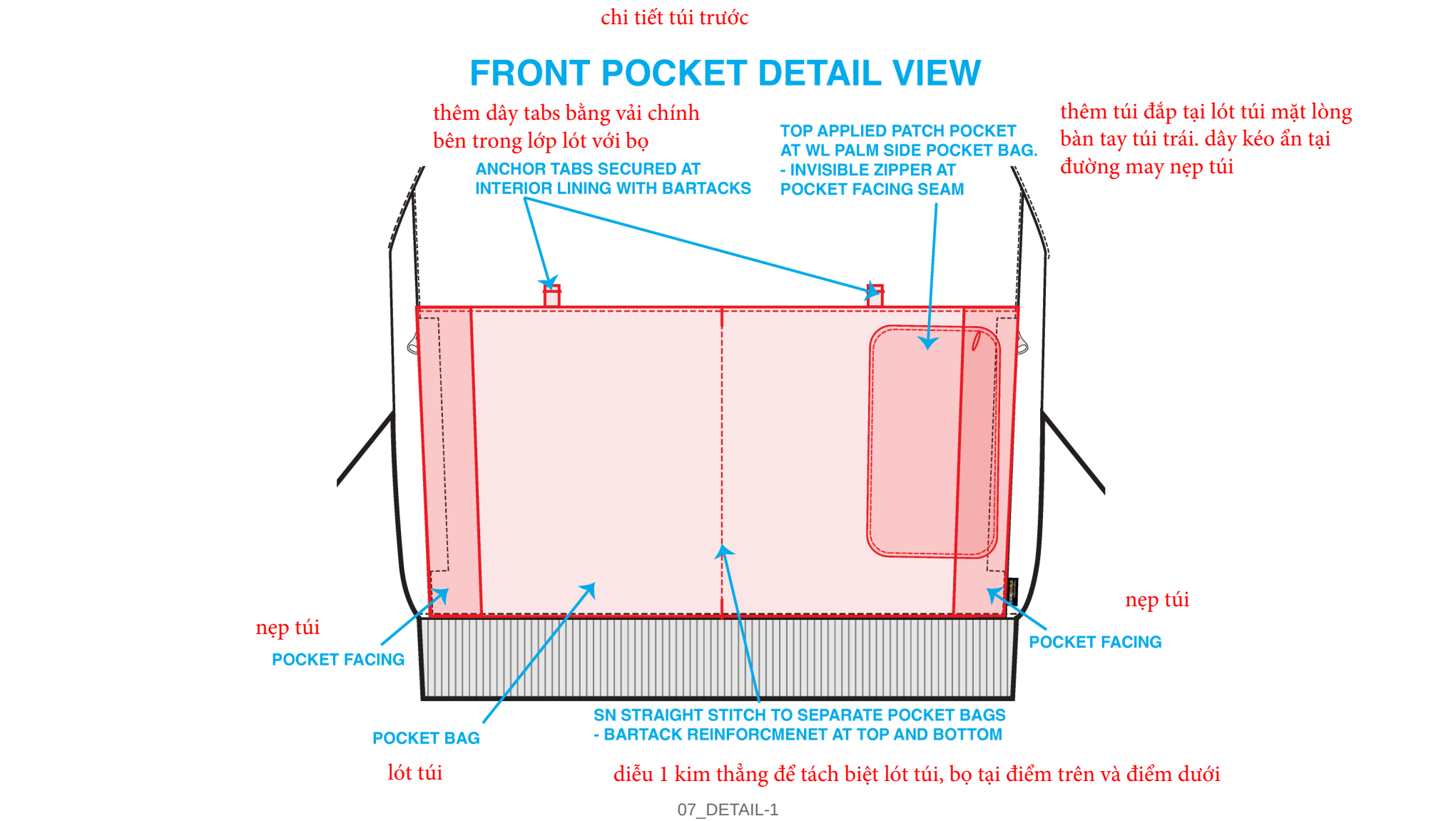
hình in tại tape dây kéo

mẫu tham khảo

REFERENCE IMAGE



06_DETAIL-1



ARTWORK PAGE

- ARTWORK TECHNIQUE IS DIRECT EMBROIDERY
AT BOTH WL SLEEVE CUFF AND CB NECK



GLEN PLAID COLORWAY



SERAFIL: #7863

TATTERSAIL COLORWAY



SERAFIL: #7863

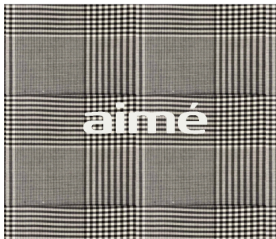
08_DETAIL-1

ARTWORK PAGE

- ARTWORK TECHNIQUE IS DIGITAL PRINT
- OPTION #1: PRINTED ON REVERSE COIL ZIPPER TAPE
- OPTION #2: PRINTED ON SELF FABRIC DOUBLE WELT



GLEN PLAID ZIPPER TAPE COLORWAY



COCONUT MILK (11-0608 TCX)

TATTERSAIL ZIPPER TAPE COLORWAY



COCONUT MILK (11-0608 TCX)

09_DETAIL-1

Sample Size: M

| POINT OF MEASURE | CODE | HOW TO MEASURE | CRITICAL | TYPE | TOLERANCE | M |
|--|---------|---|----------|------|-----------|-----------|
| FRONT BODY LENGTH | WV001 | FROM HPS TO BOTTOM EDGE | true | Full | 1/2 in | 27 in |
| BACK BODY LENGTH | WV002 | FROM CB NECK SEAM TO BOTTOM EDGE | true | Full | 1/2 in | 26 1/8 in |
| FRONT NECK DROP | WV004 | FROM HPS LEVEL STRAIGHT DOWN TO CF NECK SEAM | true | Full | 1/8 in | 4 1/4 in |
| BACK NECK DROP | WV005 | FROM HPS LEVEL STRAIGHT DOWN TO CB NECK SEAM | true | Full | 1/8 in | 7/8 in |
| BACK NECK WIDTH | WV006 | FROM SEAM TO SEAM AT BACK PANEL | true | Full | 1/4 in | 7 3/4 in |
| FRONT RAGLAN SEAM FORWARD FROM HPS | WV | | false | Full | 1/8 in | 2 1/2 in |
| BACK RAGLAN SEAM BACKWARD FROM HPS | WV | | false | Full | 1/8 in | 1 3/4 in |
| SHOULDER SLOPE - RAGLAN | WVRAG | MEAS. AT IMAG. SHOUDLER POINT 9 1/2" FROM CB, FTY GRADE POS. FOR ALL OTHER SIZES | true | Full | 1/8 in | 2 1/4 in |
| ACROSS FRONT | WV010 | MEASURE FROM A/H SEAM TO SEAM, 7" FROM HPS FOR M SIZE, FACTORY GRADE POS. FOR ALL OTHER SIZES | true | Full | 1/4 in | 14 1/4 in |
| ACROSS BACK | WV011 | MEASURE FROM A/H SEAM TO SEAM, 7" FROM HPS FOR M SIZE, FACTORY GRADE POS. FOR ALL OTHER SIZES | true | Full | 1/4 in | 16 3/8 in |
| CHEST CIRCUMFERENCE | WV012 | MEASURE 1" BELOW ARMHOLE | true | Full | 1/2 in | 49 1/2 in |
| BOTTOM OPENING CIRCUMFERENCE, STRETCHED | WV014 | MEASURE AT BOTTOM HEM SEAM, STRETCHED | true | Full | 1/2 in | 45 in |
| BOTTOM OPENING CIRCUMFERENCE, RELAXED | WV015 | MEASURE AT BOTTOM EDGE, RELAXED | true | Full | 1/2 in | 36 1/2 in |
| BOTTOM HEM HEIGHT | WV016 | | false | Full | 1/8 in | 2 in |
| ARMHOLE DROP | WV017 | FROM HPS LEVEL STRAIGHT DOWN TO UNDERARM SEAM | true | Full | 1/4 in | 12 1/2 in |
| BICEP CIRCUMFERENCE | WV018 | MEASURE AT 1" BELOW ARMHOLE | true | Full | 1/4 in | 19 1/2 in |
| FOREARM CIRCUMFERENCE | WV019 | MEASURE AT 9" ABOVE SLEEVE HEM EDGE | true | Full | 1/4 in | 15 3/4 in |
| SLEEVE OPENING CIRCUMFERENCE, STRETCHED | WV020-1 | MEASURE AT SLEEVE EDGE | true | Full | 1/4 in | 12 1/2 in |
| KNIT RIB SLEEVE OPENING CIRCUMFERENCE, RELAXED | WV020 | | true | Full | 1/4 in | 9 3/4 in |
| SLEEVE HEM HEIGHT | WV021 | | false | Full | 1/8 in | 2 in |
| SLEEVE LENGTH | WV026 | 3PT MEAS. FROM CB NECK, ARMHOLE TO SLEEVE HEM EDGE | true | Full | 1/2 in | 35 in |
| COLLAR RIB WIDTH | WV | | false | Full | 1/8 in | 1 in |
| FRONT POCKET PLACEMENT UP FROM BOTTOM HEM SEAM | JC015 | | false | Full | 1/8 in | 2 in |
| FRONT POCKET ZIPPER LENGTH | WV | | false | Full | 1/4 in | 7 in |
| SHOULDER ZIPPER LENGTH | AFC3N9 | | false | Full | 1/4 in | 6 in |
| W/L INTERIOR POCKET BAG ZIPPER LENGTH | pk5Jvf | | false | Full | 1/4 in | 0 in |
| BACK ARTWORK BELOW CB NECK SEAM | l4bv0s | | false | Full | 1/16 in | 0 in |
| W/L SLEEVE ARTWORK ABOVE SLEEVE HEM SEAM | jblWwu | | false | Full | 1/16 in | 0 in |

Development - Hyeyoung Cho

CREATED ON APR 21, 2025 3:32 PM

Date : 4/21/25

TD : Hyeyoung Cho

Status : Submit 1st Proto

Development notes :

1. Please use the S25WJ033 pattern saved in the folder for overall body silhouette with below adjustments.
2. Shift the side seam forward by 1 1/2", and add on-seam pockets.
3. Change the neck shape following sketch.
4. Change to rib hem at bottom opening.

1. sử dụng rập S25WJ033 khách gửi lưu trên hệ thống cho tổng thể thân áo và điều chỉnh bên dưới:
2. Dời đường sườn về phía trước 1 1/2 inch và thêm túi trong đường may
3. thay đổi hình dáng cổ như sketch
4. thay đổi rib tại lai áo



Fit reference.jpg

| | COMPONENT | QTY | 1. NO COLOR ASSIGNED |
|---------------|---|-----|-----------------------|
| 1 | 91-KC-3521 CODE: 91-KC-3521 Placement: BODY / SLEEVES / SIDE BODY PANEL Notes: OPTION 1 Supplier: STYLEM | | Not used |
| 2 | IN DEV CODE: TBD Placement: LINING @ INTERIOR BODY Notes: TBD 100% POLY MESH QUALITY, AROUND 60 GSM; PLEASE SEND LOCAL OPTIONS FOR APPROVAL | | Not used |
| 3 | YKK COIL CLOSED END ZIPPER CODE: TBD Placement: @ W/L FRONT SHOULDER SEAM Notes: *REVERSE* Supplier: YKK Country of Origin: China | | Not used SIZE: 5GG |
| 4 | YKK Zipper Tape CODE: YKK Placement: @ W/L FRONT SHOULDER SEAM ZIPPER | | Not used |
| 5 | YKK DS6 Zipper Slider CODE: DS6 Placement: @ W/L FRONT SHOULDER SEAM ZIPPER Supplier: YKK | | Not used |
| 6 | YKK COIL CLOSED END ZIPPER CODE: TBD Placement: 1 @ EACH FRONT HAND POCKET Supplier: YKK Country of Origin: China | | Not used SIZE: 5GG |
| 7 | YKK Zipper Tape CODE: YKK Placement: 1 @ EACH FRONT HAND POCKET ZIPPER | | Not used |
| 8 | YKK Branded Zipper Slider CODE: DA8AED01 Placement: 1 @ EACH FRONT HAND POCKET ZIPPER Supplier: YKK Country of Origin: CHINA | | Not used |
| 9 | IN DEV CODE: TBD Placement: @ EACH SLEEVE HEM / BODY HEM Notes: 1X1 FLAT KNIT TUBULAR RIB; PROCEED WITH LOCAL OPTION FOR APPROVAL | | Not used |
| 10 | CORDURA LOOP LABEL CODE: CORDURA LOOP LABEL Placement: @ W/L FRONT BODY PANEL SEAM | | Not used |
| 11 | THREAD CODE: THREAD Placement: @ ENTIRE BODY Notes: 100% POLY THREAD TEX SIZE: T-60 SPI: 8-10 Supplier: Factory Sourced | | Not used |
| 12 | ARTWORK CODE: AS CORRESPONDING FILE Placement: @ W/L SLEEVE HEM Notes: TBD A/W Supplier: Factory Sourced | | Not used |
| 13 | ARTWORK CODE: AS CORRESPONDING FILE Placement: @ W/L ZIPPER Notes: TBD A/W Supplier: Factory Sourced | | Not used |
| Components 13 | | | Total 0.00 |