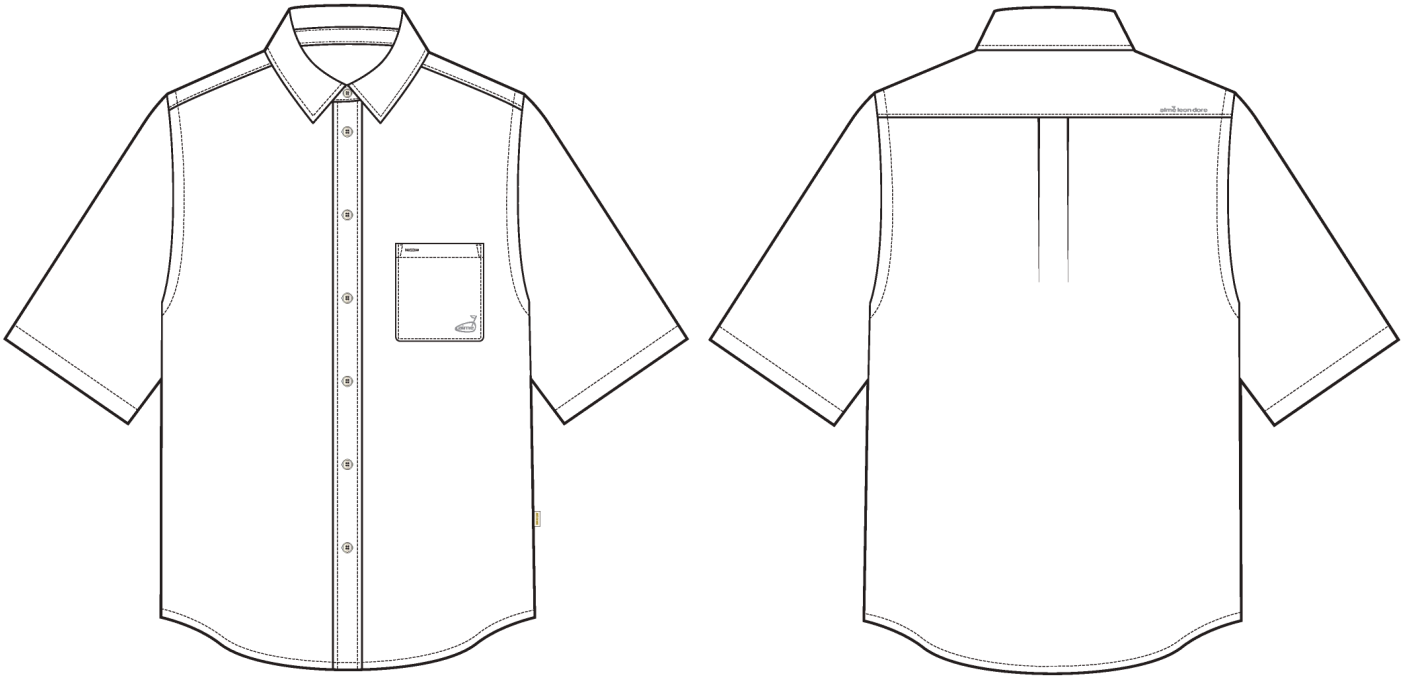


SS Printed Golf Shirt

Name	SS Printed Golf Shirt
Style No.	SS26WT031
Division	Mens
Category	Shirting
Season	Spring/Summer
Year	2026
Size Scale	<div>M</div> -Sample size <div><div>XS</div><div>S</div><div>M</div><div>L</div><div>XL</div><div>XXL</div></div>
Style Status	Development
Designer Name	Quinton
Created by/Author	5/7/2025 Cristina Loukopoulos cristina@aimeleondore.com

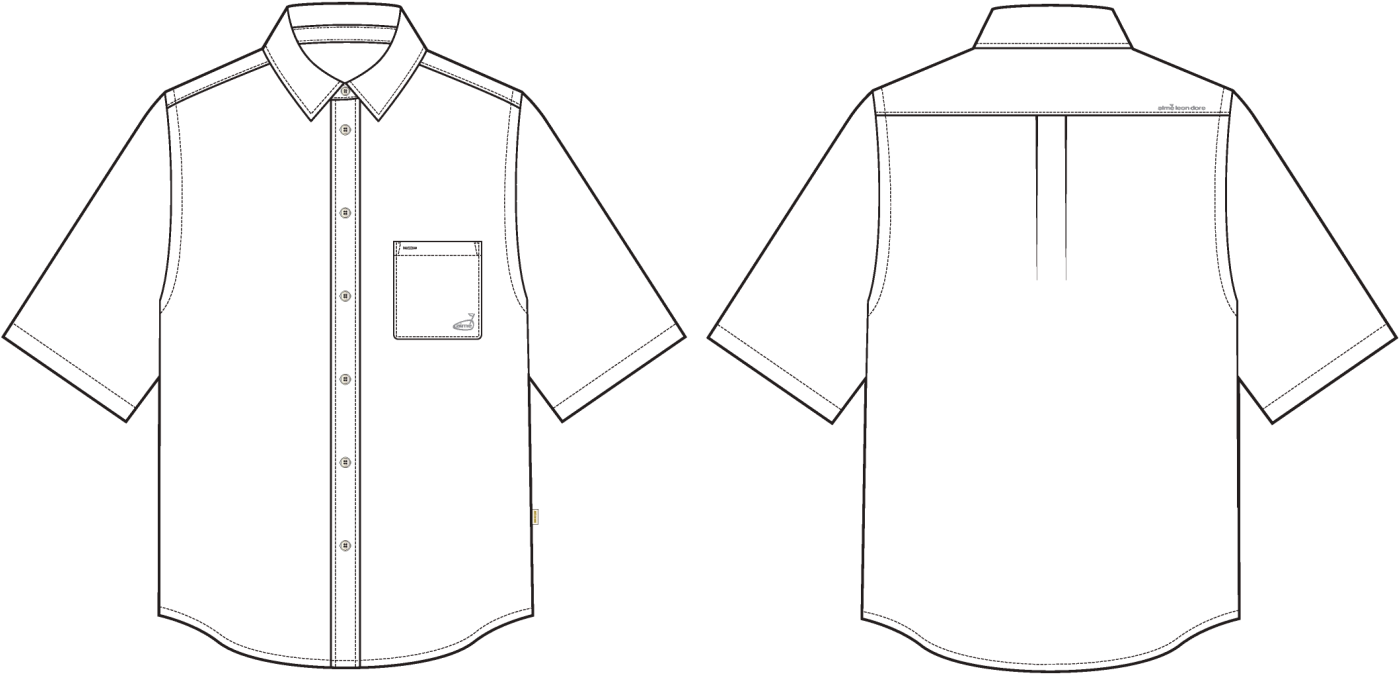


01_BLACK AND WHITE SKETCH-1

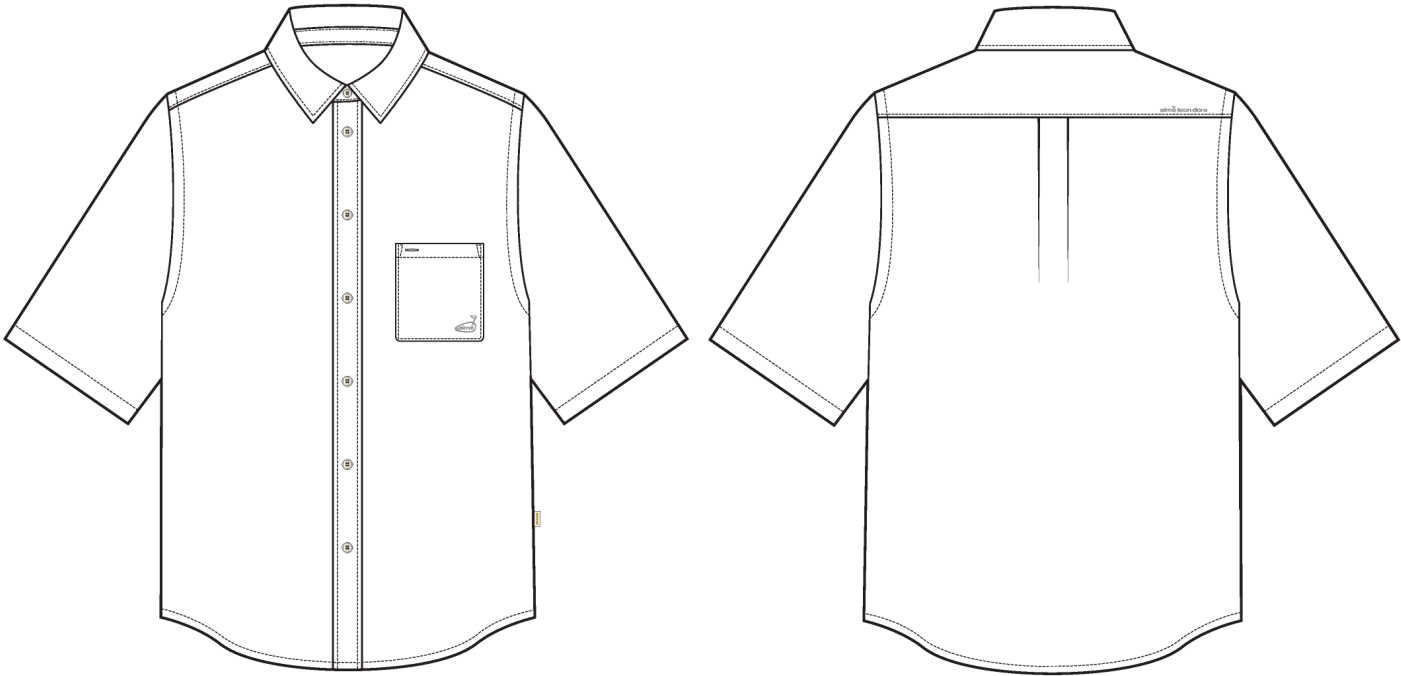


TBD

02_COLOR-1

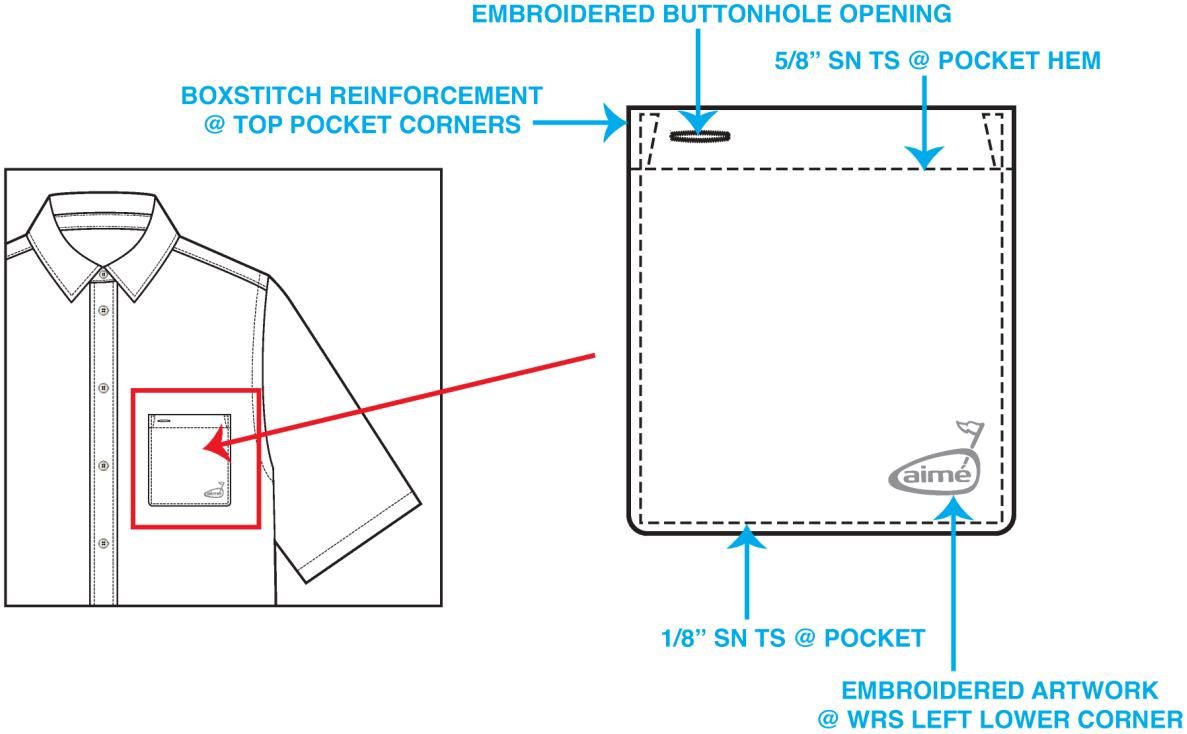


05_CONSTRUCTION DETAIL-1



04_STITCH DETAIL-1

POCKET CALLOUT PAGE



Artboard 1 copy 10-1

ARTWORK PAGE

- ARTWORK IS TECHNIQUE IS DIRECT EMBROIDERY



TBD COLORWAY



☐ SERAFIL: #TBD

07_DETAIL-1

ARTWORK PAGE

- ARTWORK IS TECHNIQUE IS DIRECT EMBROIDERY



TBD COLORWAY



08_DETAIL-1

Sample Size: M

POINT OF MEASURE	CODE	HOW TO MEASURE	CRITICAL	TYPE	TOLERANCE	M
FRONT BODY LENGTH	WV001	FROM HPS TO BOTTOM EDGE	true	Full	1/2 in	30 5/8 in
BACK BODY LENGTH	WV002	FROM CB NECK SEAM TO BOTTOM EDGE	true	Full	1/2 in	30 in
FRONT NECK DROP	WV004	FROM HPS LEVEL STRAIGHT DOWN TO CF NECK SEAM	true	Full	1/8 in	3 1/2 in
BACK NECK DROP	WV005	FROM HPS LEVEL STRAIGHT DOWN TO CB NECK SEAM	true	Full	1/8 in	5/8 in
BACK NECK WIDTH	WV006	FROM SEAM TO SEAM AT BACK PANEL	true	Full	1/4 in	6 1/2 in
SHOULDER SEAM FORWARD	WV007	FROM HPS TO SHOUDLER SEAM AT NECK	false	Full	1/8 in	3/4 in
SHOULDER SLOPE	WV008	FROM HPS LEVEL STRAIGHT DOWN TO TOP OF ARMHOLE SM	true	Full	1/8 in	2 1/2 in
ACROSS SHOULDER	WV009	FROM ARMHOLE SEAM TO SEAM AT BACK PANEL	true	Full	1/4 in	22 in
ACROSS FRONT	WV010	FROM ARMHOLE SEAM TO SEAM, 7" BELOW HPS	true	Full	1/4 in	19 1/2 in
ACROSS BACK ALONG YOKE SEAM	WV011		true	Full	1/4 in	21 in
CHEST CIRCUMFERENCE, WITH PLEAT OPEN	WV012	MEASURE 1" BELOW ARMHOLE	true	Full	1/2 in	50 in
BOTTOM OPENING CIRCUMFERENCE, RELAXED	WV015	MEASURE AT BOTTOM EDGE, RELAXED	true	Full	1/2 in	48 1/2 in
SHIRT TAIL HEIGHT	WV SHIRT	MEASURE FROM BOTTOM EDGE AT SIDE SEAM POINT TO BOTTOM EDGE OF SHIRT	false	Full	1/8 in	3 3/8 in
ARMHOLE DROP (SHIRT)	WVSHT	FROM HPS LEVEL STRAIGHT DOWN TO UNDERARM SEAM	true	Full	1/4 in	11 3/4 in
BICEP CIRCUMFERENCE (S/SLV)	WVSSHT	MEASURE 1"BELOW ARMHOLE	true	Full	1/4 in	19 1/2 in
SLEEVE OPENING CIRCUMFERENCE (S/SLV)	WVSSHT		true	Full	1/4 in	16 in
SLEEVE LENGTH (S/SLV)	WVSHT	3PT MEAS. FROM CB NECK, ARMHOLE TO SLEEVE HEM EDGE	true	Full	3/8 in	22 in
COLLAR POINT	WV022		false	Full	1/8 in	2 3/4 in
COLLAR STAND HEIGHT AT CF	WV		false	Full	1/8 in	7/8 in
COLLAR HEIGHT AT CB	WV023		false	Full	1/8 in	1 7/8 in
COLLAR STAND HEIGHT AT CB	WV		false	Full	1/8 in	1 1/4 in
COLLAR LENGTH ALONG OUTER EDGE	WV025		false	Full	1/4 in	18 in
1ST CF BUTTON POSITION FROM CF NECK SEAM	WV		false	Full	1/8 in	2 in
LAST CF BUTTON POSITION FROM BOTTOM HEM	WV		false	Full	1/4 in	5 1/4 in
BACK YOKE HEIGHT AT CB	WVYOKE	FROM CB NECK SEAM TO YOKE SEAM	false	Full	1/4 in	3 3/4 in
CF PLACKET WIDTH	WV027		false	Full	1/8 in	1 3/8 in
W/L SIDE SEAM LABEL POSITION FROM BOTTOM HEM	WVLB		false	Full	1/4 in	5 5/8 in
CB BOX PLEAT WIDTH	WV		false	Full	1/8 in	1 1/2 in
CHEST POCKET POSITION FROM HPS	WV		false	Full	1/4 in	10 1/4 in
CHEST POCKET POSITION FROM TRUE CF	WV		false	Full	1/8 in	2 in
CHEST POCKET HEIGHT AT CENTER	WV		false	Full	1/4 in	6 in
CHEST POCKET WIDTH AT TOP EDGE	WV		false	Full	1/4 in	5 1/2 in

Development - 1st Proto Request (UA) - Kilsy Morocho

CREATED ON MAY 2, 2025 4:03 PM

Status: Submit 1st Proto

Development Notes:

- 1. Please create a pattern based on the measurements and sketch provided.

COMPONENT		QTY	1. NO COLOR ASSIGNED
1	IN DEV CODE: TBD Placement: @ BODY / COLLAR STAND / COLLAR / UNDER COLLAR / SLEEVES / CF PLACKET / BACK YOKE Notes: TBD PRINTABLE BASE QUALITY; PLEASE FOLLOW CUTTING AND SEND OPTIONS FOR APPROVAL		Not used
2	IN DEV CODE: TBD Placement: 1 @ CF NECK / 6 @ CF PLACKET / 1 SPARE @ COO LABEL Notes: TBD 18L BUTTON; PROCEED WITH SUB FOR 1ST PROTO		Not used
3	FUSIBLE CODE: FUSIBLE Placement: @ UNDER COLLAR / COLLAR STAND / CF PLACKET Supplier: Factory Sourced		Not used
Components 3			Total 0.00