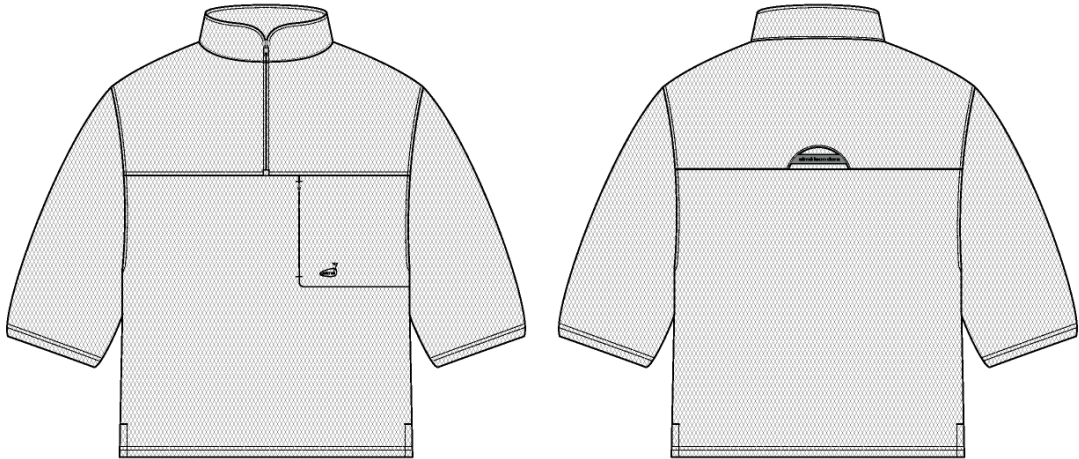
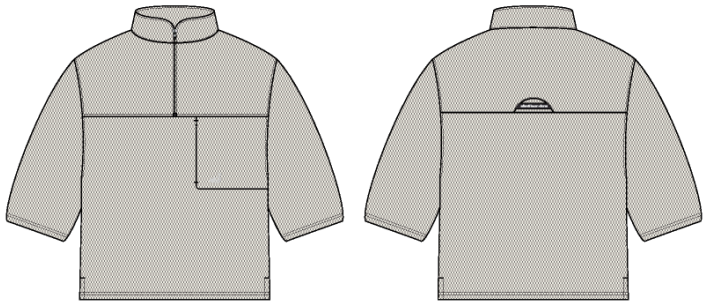


Golf Quarter Zip

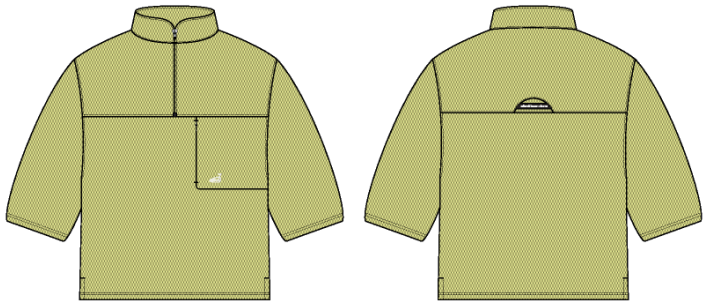
Name	Golf Quarter Zip
Style No.	SS26CS021
Division	Mens
Category	Sweatshirts
Season	Spring/Summer
Year	2026
Size Scale	<div>M</div> -Sample size <div><div>XS</div><div>S</div><div>M</div><div>L</div><div>XL</div><div>XXL</div></div>
Style Status	Adopted
Factory	UN-AVAILABLE
Drop	Golf
Designer Name	Wes
TD Name	Anastasiya
Created by/Author	1/8/2026 Anastasiya Zolotova anastasiya.zolotova@aimeleondore.com



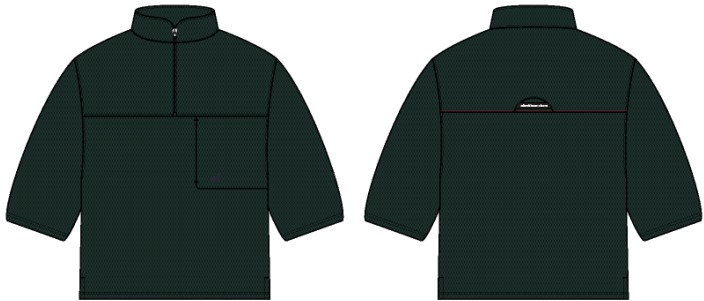
1_B&W-1



COCONUT MILK

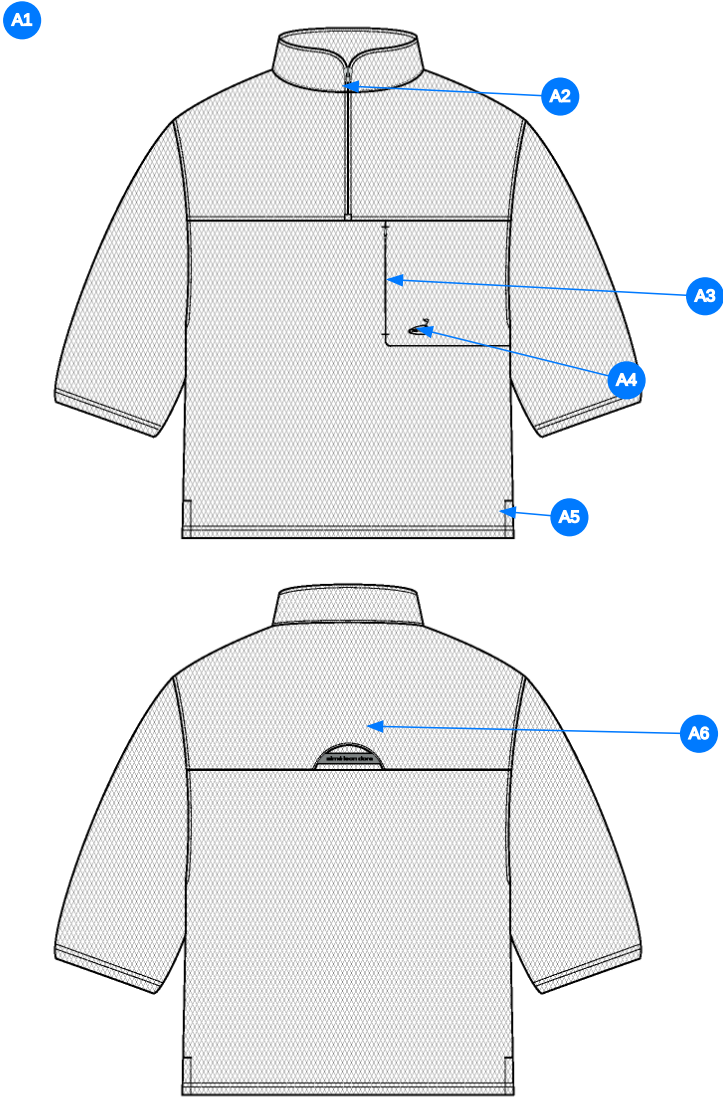


CHARLOCK



PINE GROVE

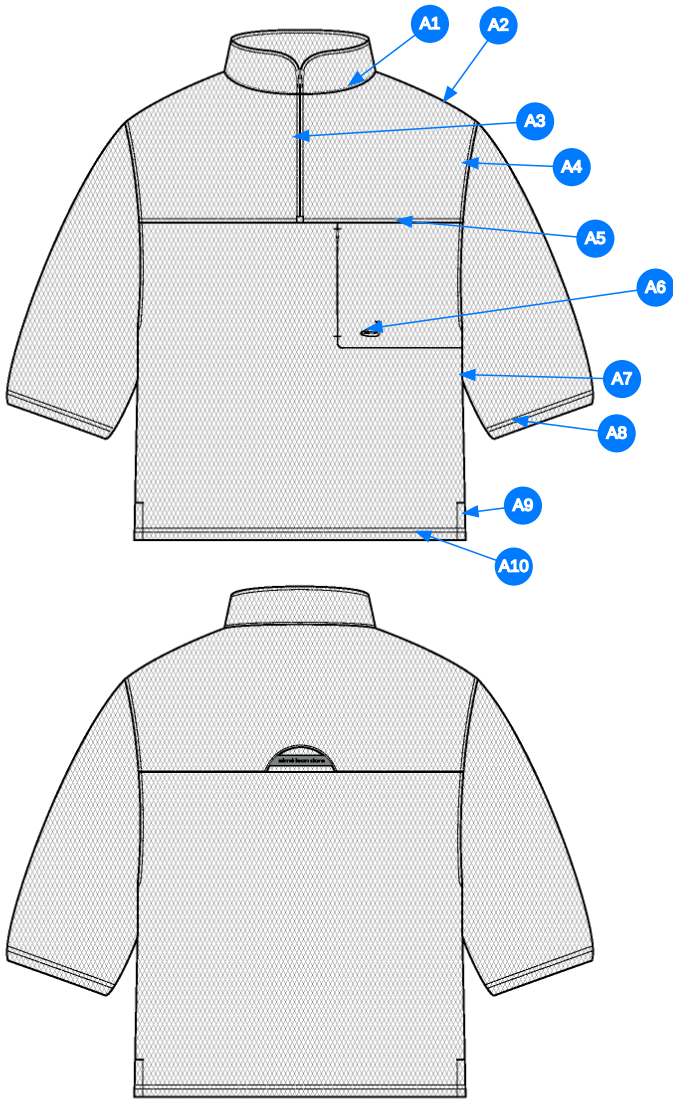
2_CLR 9-1



Comments (6)

- A1** FIT: NB 860 Cropped Quarter Zip (NB23CS000)
- A2** KISSING WELT W/ ZIPPER @ CF - ZIPPER: #5 YKK CLOSED. END COIL ZIPPER - SLIDER: DSYG
- A3** INVISIBLE ZIPPER @ WL CHEST -ZIPPER: YKK INVISIBLE CLOSED END COIL ZIPPER - SLIDER: DA4Q1
- A4** ARTWORK @ WL CHEST - SEE SEPARATE FILE FOR ARTWORK DETAILS
- A5** VENT @ SIDE SEAM - TURNBACK W/ COVERSTITCH
- A6** YOKE W/ SET IN LABEL @ BACK -SEE FOLLOWING PAGES FOR CONSTRUCTION

3_Construction Details-1



Comments (10)

- A1** STRADDLE STITCH @ SHOULDER SEAM
- A2** 1/8" SN TS @ NECK
- A3** EDGE STITCH @ BINDING
- A4** 1/4" SN TS @ ARMHOLE
- A5** 1/4" SN TS @ SEAM
- A6** CLEAN SEAM FINISH @ POCKET - ADD BAR TACKS @ TOP AND BOTTOM OF OPENING
- A7** CLEAN SEAM FINISH @ SIDE SEAM
- A8** 1/4" DN TS @ SLEEVE OPENING - TURNBACK W/ COVERLOCK STITCH
- A9** 1/8" SN TS @ VENT - ADD BAR TACK @ TOP OF VENT
- A10** 1/4" DN TS @ BOTTOM OPENING - TURNBACK W/ COVERLOCK STITCHING

4_Stitching Details-1

Sample Size: M

POINT OF MEASURE	HOW TO MEASURE	CRITICAL	TYPE	TOLERANCE	XS	S	M	L	XL	XXL
Front Body Length	HPS to bottom edge	true	Full	1/2 in	-7/8 in	-7/8 in	27 1/2 in	7/8 in	7/8 in	7/8 in
Back Body Length	CB neck seam to bottom edge	true	Full	1/2 in	-7/8 in	-7/8 in	26 3/4 in	7/8 in	7/8 in	7/8 in
Shoulder Seam Forward	HPS to seam	false	Full	1/8 in	0 in	0 in	1/2 in	0 in	0 in	0 in
Front Yoke Placement from HPS		true	Full	1/4 in	-1/8 in	-3/8 in	10 1/8 in	1/8 in	3/8 in	1/8 in
Back Yoke Seam Placement from CB Neck Seam		true	Full	1/8 in	-1/8 in	-3/8 in	8 in	1/8 in	3/8 in	1/8 in
Shoulder Slope	Shoulder point perpendicular to HPS	false	Full	1/4 in	0 in	0 in	2 in	0 in	0 in	0 in
Front Neck Drop	HPS to neck seam	false	Full	1/8 in	-1/8 in	-1/8 in	3 3/4 in	1/8 in	1/8 in	1/8 in
Back Neck Drop	HPS to neck seam	false	Full	1/8 in	0 in	0 in	3/4 in	0 in	0 in	0 in
Back Neck Width	Seam to seam at back neck, at HPS point	false	Full	1/4 in	-1/4 in	-1/4 in	7 in	1/4 in	1/4 in	1/4 in
CF Zipper Length	From neck to bottom edge	false	Full	1/4 in	0 in	-1/4 in	8 1/4 in	0 in	1/4 in	0 in
Collar Height at CB	Neck seam to collar edge at CB	false	Full	1/8 in	0 in	0 in	2 1/4 in	0 in	0 in	0 in
Across Shoulder	Edge to edge	false	Half	1/4 in	-3/4 in	-3/4 in	19 in	3/4 in	1 in	1 in
Across Front/Across Back Position from HPS		true	Full	0 in	-1/4 in	-1/4 in	7 in	1/4 in	1/4 in	1/4 in
Across Front	Down from HPS, Seam to seam	false	Half	1/4 in	-3/4 in	-3/4 in	17 1/2 in	3/4 in	1 in	1 in
Across Back	Down from HPS, Seam to Seam	false	Half	1/4 in	-3/4 in	-3/4 in	18 in	3/4 in	1 in	1 in
Chest Width	1" Below armhole- edge to edge	true	Half	1/4 in	-1 in	-1 in	22 1/2 in	1 in	1 1/2 in	1 1/2 in
Bottom Opening Width- At Edge	At bottom edge	true	Half	1/4 in	-1 in	-1 in	22 1/2 in	1 in	1 1/2 in	1 1/2 in
Bottom Hem Height	Bottom edge to top of trim	false	Full	1/8 in	0 in	0 in	1 in	0 in	0 in	0 in
Sleeve Length from CB Neck	3-point measure from CB Neck to shoulder point to sleeve edge	true	Full	1/2 in	-3/4 in	-3/4 in	22 1/2 in	3/4 in	1 in	1 in
Armhole Drop	Below HPS - measure perpendicular	false	Full	1/4 in	-3/8 in	-3/8 in	11 3/4 in	3/8 in	1/2 in	1/2 in
Bicep Width	1" below armhole- edge to edge	false	Half	1/4 in	-3/8 in	-3/8 in	9 5/8 in	3/8 in	1/2 in	1/2 in
Sleeve Opening Width- At Edge	At edge	false	Half	1/4 in	-1/4 in	-1/4 in	7 3/4 in	1/4 in	3/8 in	3/8 in
Sleeve Turnback Height	Cuff edge to seam	false	Full	1/8 in	0 in	0 in	1 in	0 in	0 in	0 in
Side Slit Height	From bottom edge to top of slit	false	Full	1/8 in	0 in	0 in	2 in	0 in	0 in	0 in
WL Chest Pocket Height		true	Full	1/4 in	0 in	-1/4 in	6 3/4 in	0 in	1/4 in	0 in
WL Chest Pocket Width	To Armhole Seam	true	Full	1/4 in	-3/8 in	-3/8 in	9 3/8 in	3/8 in	5/8 in	5/8 in
WL Chest Pocket Zipper Length		true	Full	1/8 in	0 in	-1/4 in	5 3/4 in	0 in	1/4 in	0 in
WL Chest Pocket Placement from CF Line		false	Full	1/8 in	-1/8 in	-1/8 in	2 in	1/8 in	1/8 in	1/8 in
Artwork Placement at WL Chest Pocket from Bottom Edge		true	Full	1/8 in	0 in	0 in	1/2 in	0 in	0 in	0 in
Artwork Placement At WL Chest Pocket from Side of Pocket		true	Full	1/8 in	0 in	0 in	3/8 in	0 in	0 in	0 in

Sample Size: M

POINT OF MEASURE	HOW TO MEASURE	CRITICAL	TYPE	TOLERANCE	XS	S	M	L	XL	XXL
Front Body Length	HPS to bottom edge	true	Full	1/2 in	25 3/4 in	26 5/8 in	27 1/2 in	28 3/8 in	29 1/4 in	30 1/8 in
Back Body Length	CB neck seam to bottom edge	true	Full	1/2 in	25 in	25 7/8 in	26 3/4 in	27 5/8 in	28 1/2 in	29 3/8 in
Shoulder Seam Forward	HPS to seam	false	Full	1/8 in	1/2 in	1/2 in	1/2 in	1/2 in	1/2 in	1/2 in
Front Yoke Placement from HPS		true	Full	1/4 in	9 5/8 in	9 3/4 in	10 1/8 in	10 1/4 in	10 5/8 in	10 3/4 in
Back Yoke Seam Placement from CB Neck Seam		true	Full	1/8 in	7 1/2 in	7 5/8 in	8 in	8 1/8 in	8 1/2 in	8 5/8 in
Shoulder Slope	Shoulder point perpendicular to HPS	false	Full	1/4 in	2 in	2 in	2 in	2 in	2 in	2 in
Front Neck Drop	HPS to neck seam	false	Full	1/8 in	3 1/2 in	3 5/8 in	3 3/4 in	3 7/8 in	4 in	4 1/8 in
Back Neck Drop	HPS to neck seam	false	Full	1/8 in	3/4 in	3/4 in	3/4 in	3/4 in	3/4 in	3/4 in
Back Neck Width	Seam to seam at back neck, at HPS point	false	Full	1/4 in	6 1/2 in	6 3/4 in	7 in	7 1/4 in	7 1/2 in	7 3/4 in
CF Zipper Length	From neck to bottom edge	false	Full	1/4 in	8 in	8 in	8 1/4 in	8 1/4 in	8 1/2 in	8 1/2 in
Collar Height at CB	Neck seam to collar edge at CB	false	Full	1/8 in	2 1/4 in	2 1/4 in	2 1/4 in	2 1/4 in	2 1/4 in	2 1/4 in
Across Shoulder	Edge to edge	false	Half	1/4 in	17 1/2 in	18 1/4 in	19 in	19 3/4 in	20 3/4 in	21 3/4 in
Across Front/Across Back Position from HPS		true	Full	0 in	6 1/2 in	6 3/4 in	7 in	7 1/4 in	7 1/2 in	7 3/4 in
Across Front	Down from HPS, Seam to seam	false	Half	1/4 in	16 in	16 3/4 in	17 1/2 in	18 1/4 in	19 1/4 in	20 1/4 in
Across Back	Down from HPS, Seam to Seam	false	Half	1/4 in	16 1/2 in	17 1/4 in	18 in	18 3/4 in	19 3/4 in	20 3/4 in
Chest Width	1" Below armhole- edge to edge	true	Half	1/4 in	20 1/2 in	21 1/2 in	22 1/2 in	23 1/2 in	25 in	26 1/2 in
Bottom Opening Width- At Edge	At bottom edge	true	Half	1/4 in	20 1/2 in	21 1/2 in	22 1/2 in	23 1/2 in	25 in	26 1/2 in
Bottom Hem Height	Bottom edge to top of trim	false	Full	1/8 in	1 in	1 in	1 in	1 in	1 in	1 in
Sleeve Length from CB Neck	3-point measure from CB Neck to shoulder point to sleeve edge	true	Full	1/2 in	21 in	21 3/4 in	22 1/2 in	23 1/4 in	24 1/4 in	25 1/4 in
Armhole Drop	Below HPS - measure perpendicular	false	Full	1/4 in	11 in	11 3/8 in	11 3/4 in	12 1/8 in	12 5/8 in	13 1/8 in
Bicep Width	1" below armhole- edge to edge	false	Half	1/4 in	8 7/8 in	9 1/4 in	9 5/8 in	10 in	10 1/2 in	11 in
Sleeve Opening Width- At Edge	At edge	false	Half	1/4 in	7 1/4 in	7 1/2 in	7 3/4 in	8 in	8 3/8 in	8 3/4 in
Sleeve Turnback Height	Cuff edge to seam	false	Full	1/8 in	1 in	1 in	1 in	1 in	1 in	1 in
Side Slit Height	From bottom edge to top of slit	false	Full	1/8 in	2 in	2 in	2 in	2 in	2 in	2 in
WL Chest Pocket Height		true	Full	1/4 in	6 1/2 in	6 1/2 in	6 3/4 in	6 3/4 in	7 in	7 in
WL Chest Pocket Width	To Armhole Seam	true	Full	1/4 in	8 5/8 in	9 in	9 3/8 in	9 3/4 in	10 3/8 in	11 in
WL Chest Pocket Zipper Length		true	Full	1/8 in	5 1/2 in	5 1/2 in	5 3/4 in	5 3/4 in	6 in	6 in
WL Chest Pocket Placement from CF Line		false	Full	1/8 in	1 3/4 in	1 7/8 in	2 in	2 1/8 in	2 1/4 in	2 3/8 in
Artwork Placement at WL Chest Pocket from Bottom Edge		true	Full	1/8 in	1/2 in	1/2 in	1/2 in	1/2 in	1/2 in	1/2 in
Artwork Placement At WL Chest Pocket from Side of Pocket		true	Full	1/8 in	3/8 in	3/8 in	3/8 in	3/8 in	3/8 in	3/8 in

Measured Size: M

POINT OF MEASURE	HOW TO MEASURE	CRITICAL	TYPE	TOLERANCE	EXPECTED	PPS - RCVD	VARIANCE	ADJUST BY +/-	REVISED SPEC	MEASUREMENT NOTES
Front Body Length	HPS to bottom edge	true	Full	1/2 in	27 1/2 in	27 1/2 in	0 in	0 in	27 1/2 in	
Back Body Length	CB neck seam to bottom edge	true	Full	1/2 in	26 3/4 in	27 in	1/4 in	0 in	26 3/4 in	
Shoulder Seam Forward	HPS to seam	false	Full	1/8 in	1/2 in	1/16 in	-7/16 in	0 in	1/2 in	go back to spec
Front Yoke Placement from HPS		true	Full	1/4 in	10 1/8 in	10 1/8 in	0 in	0 in	10 1/8 in	
Back Yoke Seam Placement from CB Neck Seam		true	Full	1/8 in	8 in	8 in	0 in	0 in	8 in	
Shoulder Slope	Shoulder point perpendicular to HPS	false	Full	1/4 in	2 in	2 1/4 in	1/4 in	0 in	2 in	
Front Neck Drop	HPS to neck seam	false	Full	1/8 in	3 3/4 in	3 1/2 in	-1/4 in	0 in	3 3/4 in	go back to spec
Back Neck Drop	HPS to neck seam	false	Full	1/8 in	3/4 in	1 in	1/4 in	0 in	3/4 in	go back to spec
Back Neck Width	Seam to seam at back neck, at HPS point	false	Full	1/4 in	7 in	7 3/8 in	3/8 in	0 in	7 in	go back to spec
CF Zipper Length	From neck to bottom edge	false	Full	1/4 in	8 1/4 in	8 3/8 in	1/8 in	0 in	8 1/4 in	
Collar Height at CB	Neck seam to collar edge at CB	false	Full	1/8 in	2 1/4 in	2 3/8 in	1/8 in	0 in	2 1/4 in	
Across Shoulder	Edge to edge	false	Half	1/4 in	19 in	19 in	0 in	0 in	19 in	
Across Front/Across Back Position from HPS		true	Full	0 in	7 in	7 in	0 in	0 in	7 in	
Across Front	Down from HPS, Seam to seam	false	Half	1/4 in	17 1/2 in	17 1/2 in	0 in	0 in	17 1/2 in	
Across Back	Down from HPS, Seam to Seam	false	Half	1/4 in	18 in	18 in	0 in	0 in	18 in	
Chest Width	1" Below armhole- edge to edge	true	Half	1/4 in	22 1/2 in	22 1/2 in	0 in	0 in	22 1/2 in	
Bottom Opening Width- At Edge	At bottom edge	true	Half	1/4 in	22 1/2 in	22 1/4 in	-1/4 in	0 in	22 1/2 in	
Bottom Hem Height	Bottom edge to top of trim	false	Full	1/8 in	1 in	1 in	0 in	0 in	1 in	
Sleeve Length from CB Neck	3-point measure from CB Neck to shoulder point to sleeve edge	true	Full	1/2 in	22 1/2 in	22 3/8 in	-1/8 in	0 in	22 1/2 in	
Armhole Drop	Below HPS - measure perpendicular	false	Full	1/4 in	11 3/4 in	11 1/2 in	-1/4 in	0 in	11 3/4 in	
Bicep Width	1" below armhole- edge to edge	false	Half	1/4 in	9 5/8 in	9 1/2 in	-1/8 in	0 in	9 5/8 in	
Sleeve Opening Width- At Edge	At edge	false	Half	1/4 in	7 3/4 in	7 3/4 in	0 in	0 in	7 3/4 in	
Sleeve Turnback Height	Cuff edge to seam	false	Full	1/8 in	1 in	1 in	0 in	0 in	1 in	
Side Slit Height	From bottom edge to top of slit	false	Full	1/8 in	2 in	2 in	0 in	0 in	2 in	
WL Chest Pocket Height		true	Full	1/4 in	6 3/4 in	6 3/4 in	0 in	0 in	6 3/4 in	
WL Chest Pocket Width	To Armhole Seam	true	Full	1/4 in	9 3/8 in	9 1/4 in	-1/8 in	0 in	9 3/8 in	
WL Chest Pocket Zipper Length		true	Full	1/8 in	5 3/4 in	5 5/8 in	-1/8 in	0 in	5 3/4 in	
WL Chest Pocket Placement from CF Line		false	Full	1/8 in	2 in	2 in	0 in	0 in	2 in	
Artwork Placement at WL Chest Pocket from Bottom Edge		true	Full	1/8 in	1/2 in	1/2 in	0 in	0 in	1/2 in	
Artwork Placement At WL Chest Pocket from Side of Pocket		true	Full	1/8 in	3/8 in	3/8 in	0 in	0 in	3/8 in	

PPS - Sarah Tota

CREATED ON JAN 8, 2026 8:40 PM

PPS: SIZE:M, CREATED AT: 01-05-2026

SS26CS021 Golf Quarter Zip

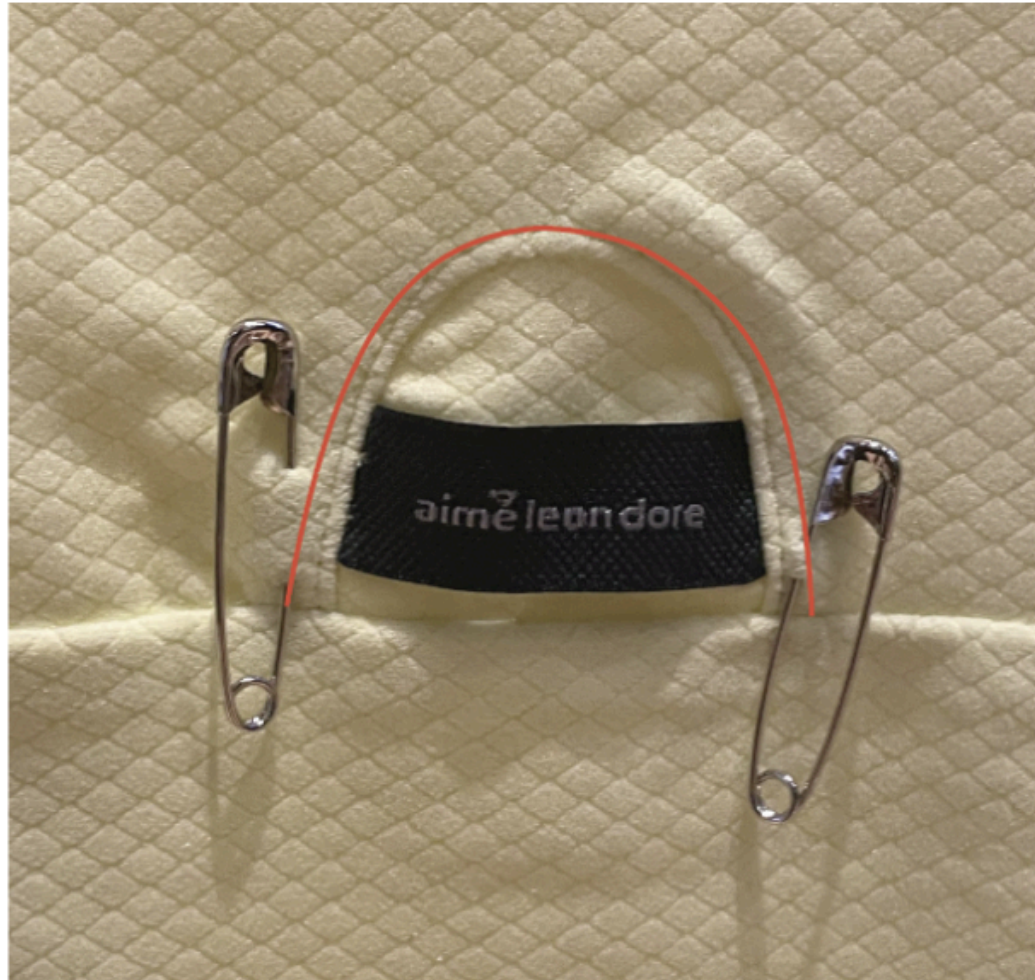
FITTING DATE: 1/8/2025**MODEL/ATTENDEES:** Anastasiya, Hyeyoung, Jeni, Lombardo, Cal**STATUS:** PPS approved to TOP**Fit Comments:**

1. Shoulder seam forward came in -7/16, go back to spec -> **Chôm vai -7/16, vui lòng đảm bảo thông số yêu cầu**
2. Front neck drop came in -1/4", go back to spec -> **Hạ cổ trước bị -1/4", vui lòng đảm bảo thông số yêu cầu**
3. Back neck drop came in +1/4", go back to spec -> **Hạ cổ sau bị +1/4", vui lòng đảm bảo thông số yêu cầu**
4. Back neck width came in +3/8", go back to spec -> **Rộng cổ sau bị +3/8", vui lòng đảm bảo thông số yêu cầu**
5. Increase width of half moon for logo on CB by 1/4" total - see photo -> **Tăng rộng bán nguyệt thân sau mỗi bên 1/8" - xem hình ảnh**
6. Zipper looks too long - zipper is wavy bc it looks shoved into the seam and is pushing into the horizontal cut seam
-> **Khóa kéo giữa thân trước trông quá dài – khóa kéo bị gợn/sóng do có vẻ bị nhét vào đường may, làm đầy và chèn vào đường cắt ngang(xem hình ảnh). Phòng kỹ thuật vui lòng điều chỉnh và cải thiện cho sản xuất.**

-> Tăng rộng bán nguyệt thân sau mỗi bên 1/8", vẫn giữ thông số cao bán nguyệt- xem hình ảnh

SS26CS021 GOLF QUARTER ZIP

- Increase width of half moon by 1/8" on each side while maintaining height

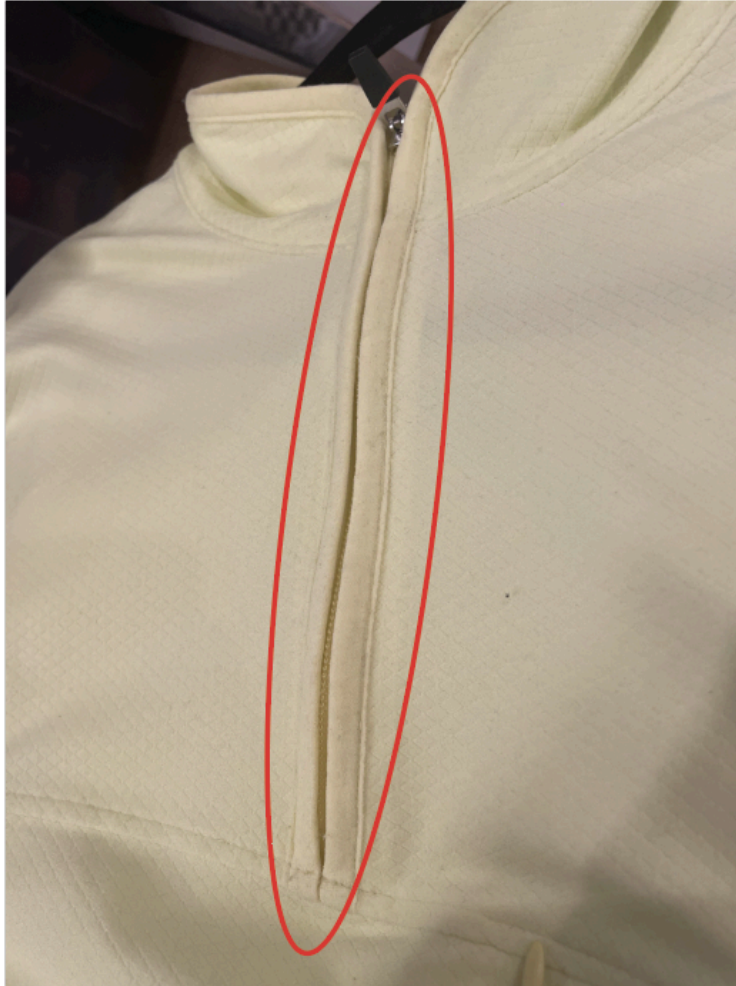


Screenshot 2026-01-08 at 5.54.21 PM.jpg

->Khóa kéo giữa thân trước trông quá dài – khóa kéo bị gợn/sóng do có vẻ bị nhét vào đường may, làm đầy và chèn vào đường cắt ngang(xem hình ảnh). Phòng kỹ thuật vui lòng điều chỉnh và cải thiện cho sản xuất.

SS26CS021 GOLF QUARTER ZIP

- Zipper looks too long - the zipper is wavy because it seems shoved into the seam and its pushing down on the horizontal cut seam



Screenshot 2026-01-08 at 3.54.40 PM.jpg