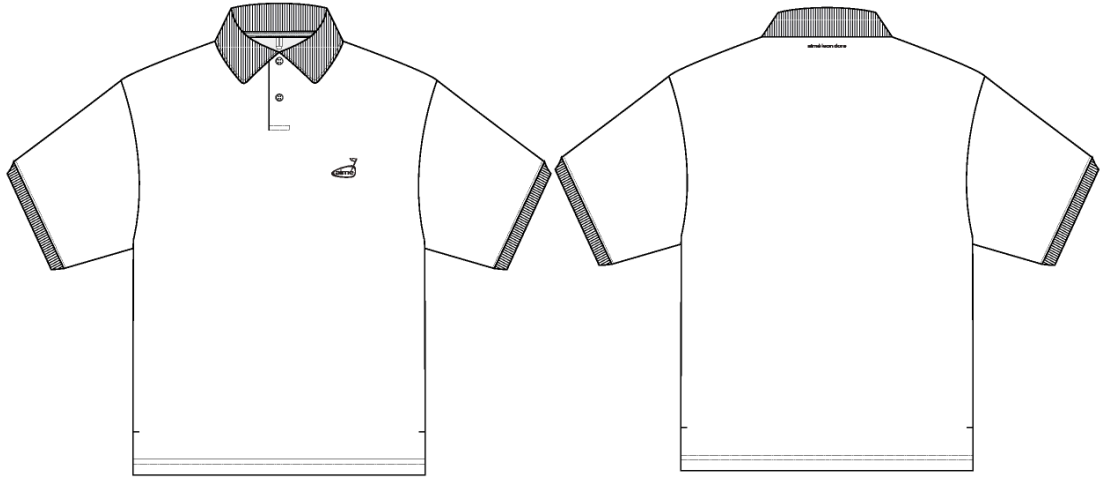


Golf Easy Polo

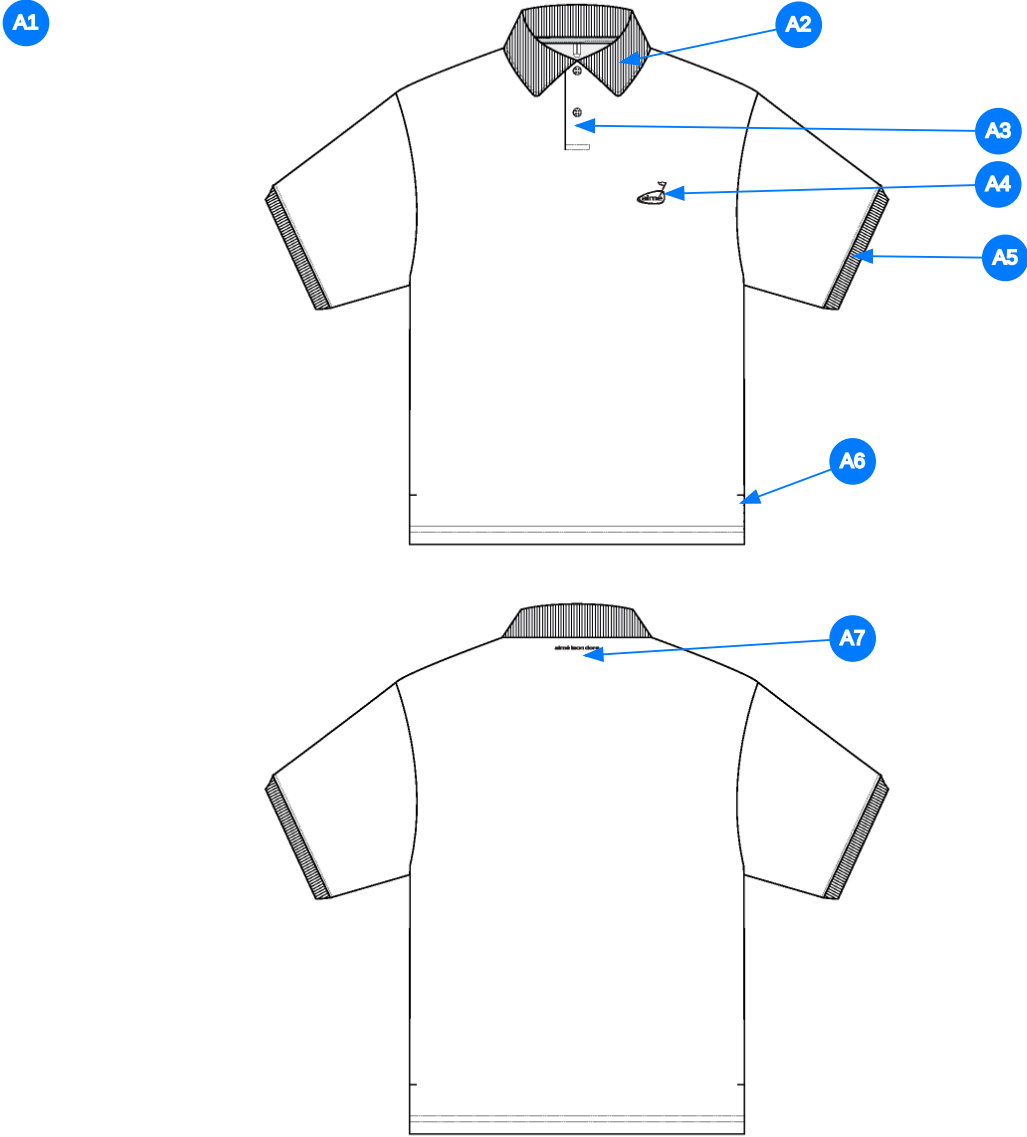
Name	Golf Easy Polo
Style No.	SS26CT031
Division	Mens
Category	Polos
Season	Spring/Summer
Year	2026
Size Scale	<div>M</div> -Sample size
	<div>XS</div> <div>S</div> <div>M</div> <div>L</div> <div>XL</div> <div>XXL</div>
Style Status	Adopted
Factory	UN-AVAILABLE
Drop	Golf
Designer Name	Wes
TD Name	Anastasiya
Created by/Author	1/22/2026 Anastasiya Zolotova anastasiya.zolotova@aimeleondore.com



1\_B&W-1



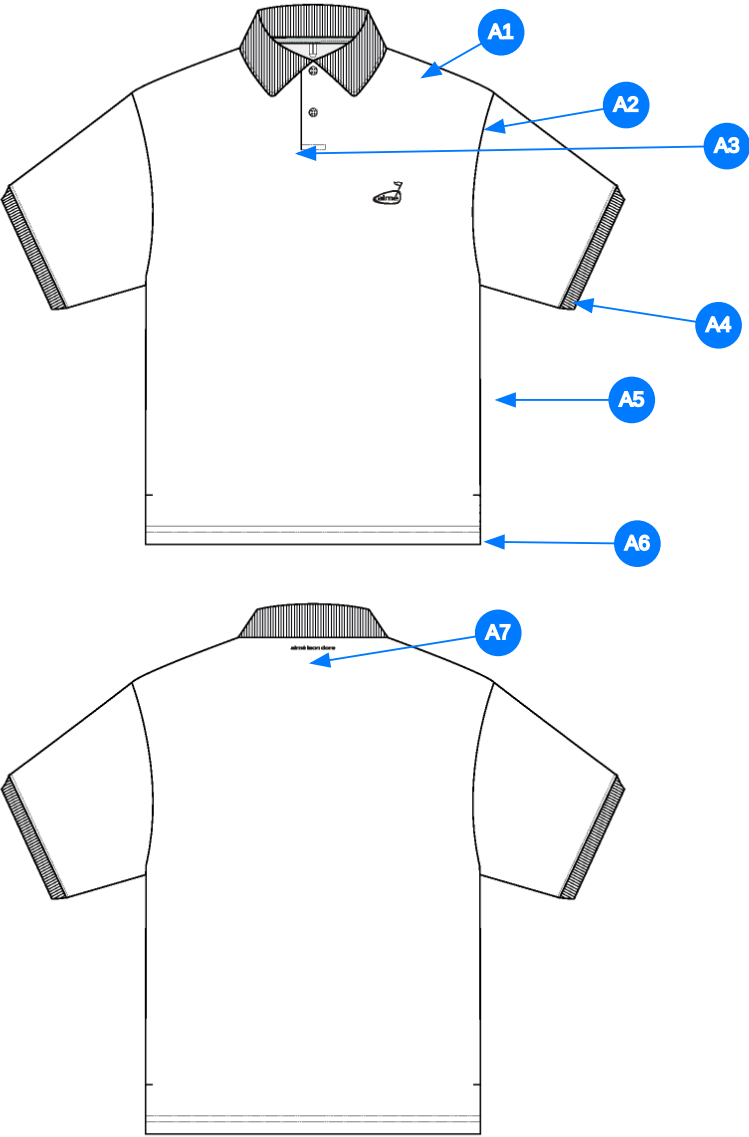
2\_CLR-1



Comments (7)

- A1** FIT: SS PRINTED GOLF POLO (SS25CT042)
- A2** COLLAR: RIB @ COLLAR - COTTON/POLY TAPE ALONG BACK NECK
- A3** GROWN ON PLACKET W/ BUTTON CLOSURE - 3X  
BUTTONS TOTAL; 2 @ CF, 1. EXTRA - SIZE: 20L
- A4** EMBROIDERED ARTWORK @ WL CHEST - SEE SEPARATE  
FILE FOR ARTWORK DETAILS
- A5** 1X1 RIB @ SLEEVE OPENING
- A6** VENT @ SIDE SEAMS
- A7** EMBROIDERED ARTWORK @ CB NECK - SEE ADDITIONAL  
FILE FOR ARTWORK DETAILS

3\_Construction Details-1



Comments (7)

- A1** STRADDLE STITCH @ SHOULDER
- A2** CLEAN SEAM @ ARMHOLE
- A3** 1/8" SN TS @ PLACKET
- A4** 1/8" SN TS @ SLEEVE CUFFS
- A5** CLEAN SEAM FINISH @ SIDE SEAMS
- A6** 1/4" DN TS @ BOTTOM HEM - TURN BACK W/ COVERLOCK STITCH
- A7** EDGESTITCH @ HALF MOON

4\_Stitching Details-1

Sample Size: M

POINT OF MEASURE	HOW TO MEASURE	CRITICAL	TYPE	TOLERANCE	M
Front Body Length	HPS to bottom edge	true	Full	1/4 in	28 1/2 in
Back Body Length	CB neck seam to bottom edge	true	Full	1/4 in	28 in
Shoulder Seam Forward	HPS to seam	false	Full	1/8 in	3/8 in
Shoulder Slope	Shoulder point perpendicular to HPS	false	Full	1/4 in	1 7/8 in
Front Neck Drop	HPS to neck seam	false	Full	1/8 in	3 3/4 in
Back Neck Drop	HPS to neck seam	false	Full	1/8 in	1/2 in
Back Neck Width	Seam to seam at back neck, at HPS point	false	Full	1/4 in	6 1/2 in
Across Shoulder	Seam to seam	false	Half	1/4 in	17 3/4 in
Across Front/Across Back Position from HPS		true	Full	0 in	7 in
Across Front	Down from HPS, Seam to seam	false	Half	1/4 in	16 in
Across Back	Down from HPS, Seam to Seam	false	Half	1/4 in	16 3/4 in
Chest Width	1" Below armhole- edge to edge	true	Half	1/4 in	21 1/2 in
Bottom Opening Width- At Edge	At bottom edge	true	Half	1/4 in	21 1/2 in
Bottom Hem Height	Bottom edge to stitch line or trim seam	false	Full	1/8 in	3/4 in
Sleeve Length from CB Neck	3-point measure from CB Neck to shoulder point to sleeve edge	true	Full	1/2 in	19 in
Armhole Drop	Below HPS - measure perpendicular	false	Full	1/4 in	11 1/2 in
Bicep Width	1" below armhole- edge to edge	false	Half	1/4 in	8 in
Sleeve Opening Width- At Edge	At edge	false	Half	1/4 in	6 1/4 in
Cuff Height	Cuff edge to seam	false	Full	1/8 in	1/2 in
Collar Point Length	Neck seam to collar point, along edge	false	Full	1/8 in	2 1/2 in
Collar Height at CB	Neck seam to collar edge at CB	false	Full	1/8 in	3 in
Collar Length along the edge	Collar point to collar point, along the edge	false	Full	3/8 in	18 in
CF Placket Length	CF neck drop to bottom of placket	true	Full	1/8 in	5 in
CF Placket Width	Width of placket edge to edge	false	Full	1/8 in	1 1/4 in
1st Button Below Neck Seam	From top of placket edge to center of 1st Button	false	Full	1/8 in	3/8 in
2nd Button Placement from 1st Button Center	To Center of 2nd Button	true	Full	0 in	2 in
Side Slit Height	From bottom edge to top of slit	false	Full	1/8 in	1 1/2 in
WL Chest Logo Placement from HPS		true	Full	1/8 in	7 in
WL Chest Logo Placement out from the CF Line		false	Full	1/8 in	3 1/8 in
CB Artwork Placement below CB Neck Seam	From CB neck seam to top Artwork	false	Full	1/8 in	1 1/4 in
Half Moon Height at CB		false	Full	1/8 in	2 3/4 in
Half Moon Width		false	Full	1/8 in	5 1/4 in

Sample Size: M

POINT OF MEASURE	HOW TO MEASURE	CRITICAL	TYPE	TOLERANCE	M
Front Body Length	HPS to bottom edge	true	Full	1/4 in	28 1/2 in
Back Body Length	CB neck seam to bottom edge	true	Full	1/4 in	28 in
Shoulder Seam Forward	HPS to seam	false	Full	1/8 in	3/8 in
Shoulder Slope	Shoulder point perpendicular to HPS	false	Full	1/4 in	1 7/8 in
Front Neck Drop	HPS to neck seam	false	Full	1/8 in	3 3/4 in
Back Neck Drop	HPS to neck seam	false	Full	1/8 in	1/2 in
Back Neck Width	Seam to seam at back neck, at HPS point	false	Full	1/4 in	6 1/2 in
Across Shoulder	Seam to seam	false	Half	1/4 in	17 3/4 in
Across Front/Across Back Position from HPS		true	Full	0 in	7 in
Across Front	Down from HPS, Seam to seam	false	Half	1/4 in	16 in
Across Back	Down from HPS, Seam to Seam	false	Half	1/4 in	16 3/4 in
Chest Width	1" Below armhole- edge to edge	true	Half	1/4 in	21 1/2 in
Bottom Opening Width- At Edge	At bottom edge	true	Half	1/4 in	21 1/2 in
Bottom Hem Height	Bottom edge to stitch line or trim seam	false	Full	1/8 in	3/4 in
Sleeve Length from CB Neck	3-point measure from CB Neck to shoulder point to sleeve edge	true	Full	1/2 in	19 in
Armhole Drop	Below HPS - measure perpendicular	false	Full	1/4 in	11 1/2 in
Bicep Width	1" below armhole- edge to edge	false	Half	1/4 in	8 in
Sleeve Opening Width- At Edge	At edge	false	Half	1/4 in	6 1/4 in
Cuff Height	Cuff edge to seam	false	Full	1/8 in	1/2 in
Collar Point Length	Neck seam to collar point, along edge	false	Full	1/8 in	2 1/2 in
Collar Height at CB	Neck seam to collar edge at CB	false	Full	1/8 in	3 in
Collar Length along the edge	Collar point to collar point, along the edge	false	Full	3/8 in	18 in
CF Placket Length	CF neck drop to bottom of placket	true	Full	1/8 in	5 in
CF Placket Width	Width of placket edge to edge	false	Full	1/8 in	1 1/4 in
1st Button Below Neck Seam	From top of placket edge to center of 1st Button	false	Full	1/8 in	3/8 in
2nd Button Placement from 1st Button Center	To Center of 2nd Button	true	Full	0 in	2 in
Side Slit Height	From bottom edge to top of slit	false	Full	1/8 in	1 1/2 in
WL Chest Logo Placement from HPS		true	Full	1/8 in	7 in
WL Chest Logo Placement out from the CF Line		false	Full	1/8 in	3 1/8 in
CB Artwork Placement below CB Neck Seam	From CB neck seam to top Artwork	false	Full	1/8 in	1 1/4 in
Half Moon Height at CB		false	Full	1/8 in	2 3/4 in
Half Moon Width		false	Full	1/8 in	5 1/4 in

Measured Size: M

POINT OF MEASURE	HOW TO MEASURE	CRITICAL	TYPE	TOLERANCE	EXPECTED	PPS - RCVD	VARIANCE	ADJUST BY +/-	REVISED SPEC	MEASUREMENT NOTES
Front Body Length	HPS to bottom edge	true	Full	1/4 in	28 1/2 in	28 1/2 in	0 in	0 in	28 1/2 in	
Back Body Length	CB neck seam to bottom edge	true	Full	1/4 in	28 in	28 5/8 in	5/8 in	0 in	28 in	Back to Spec
Shoulder Seam Forward	HPS to seam	false	Full	1/8 in	3/8 in	3/8 in	0 in	0 in	3/8 in	
Shoulder Slope	Shoulder point perpendicular to HPS	false	Full	1/4 in	1 7/8 in	2 in	1/8 in	0 in	1 7/8 in	
Front Neck Drop	HPS to neck seam	false	Full	1/8 in	3 3/4 in	3 3/4 in	0 in	0 in	3 3/4 in	
Back Neck Drop	HPS to neck seam	false	Full	1/8 in	1/2 in	3/8 in	-1/8 in	0 in	1/2 in	
Back Neck Width	Seam to seam at back neck, at HPS point	false	Full	1/4 in	6 3/4 in	7 in	1/4 in	-1/4 in	6 1/2 in	Follow Revised
Across Shoulder	Seam to seam	false	Half	1/4 in	17 3/4 in	17 3/4 in	0 in	0 in	17 3/4 in	
Across Front/Across Back Position from HPS		true	Full	0 in	7 in	7 in	0 in	0 in	7 in	
Across Front	Down from HPS, Seam to seam	false	Half	1/4 in	16 in	16 1/4 in	1/4 in	0 in	16 in	
Across Back	Down from HPS, Seam to Seam	false	Half	1/4 in	16 3/4 in	16 3/4 in	0 in	0 in	16 3/4 in	
Chest Width	1" Below armhole- edge to edge	true	Half	1/4 in	21 1/2 in	21 3/4 in	1/4 in	0 in	21 1/2 in	
Bottom Opening Width- At Edge	At bottom edge	true	Half	1/4 in	21 1/2 in	21 1/4 in	-1/4 in	0 in	21 1/2 in	
Bottom Hem Height	Bottom edge to stitch line or trim seam	false	Full	1/8 in	3/4 in	3/4 in	0 in	0 in	3/4 in	
Sleeve Length from CB Neck	3-point measure from CB Neck to shoulder point to sleeve edge	true	Full	1/2 in	19 in	19 3/8 in	3/8 in	0 in	19 in	
Armhole Drop	Below HPS - measure perpendicular	false	Full	1/4 in	11 1/2 in	11 3/4 in	1/4 in	0 in	11 1/2 in	
Bicep Width	1" below armhole- edge to edge	false	Half	1/4 in	8 in	8 in	0 in	0 in	8 in	
Sleeve Opening Width- At Edge	At edge	false	Half	1/4 in	6 1/4 in	6 in	-1/4 in	0 in	6 1/4 in	
Cuff Height	Cuff edge to seam	false	Full	1/8 in	1/2 in	1/2 in	0 in	0 in	1/2 in	
Collar Point Length	Neck seam to collar point, along edge	false	Full	1/8 in	2 1/2 in	2 1/2 in	0 in	0 in	2 1/2 in	
Collar Height at CB	Neck seam to collar edge at CB	false	Full	1/8 in	3 in	3 in	0 in	0 in	3 in	
Collar Length along the edge	Collar point to collar point, along the edge	false	Full	3/8 in	18 in	18 in	0 in	0 in	18 in	
CF Placket Length	CF neck drop to bottom of placket	true	Full	1/8 in	5 in	4 7/8 in	-1/8 in	0 in	5 in	
CF Placket Width	Width of placket edge to edge	false	Full	1/8 in	1 1/4 in	1 3/8 in	1/8 in	0 in	1 1/4 in	
1st Button Below Neck Seam	From top of placket edge to center of 1st Button	false	Full	1/8 in	3/8 in	1/2 in	1/8 in	0 in	3/8 in	
2nd Button Placement from 1st Button Center	To Center of 2nd Button	true	Full	0 in	2 in	2 1/2 in	1/2 in	0 in	2 in	Back to Spec
Side Slit Height	From bottom edge to top of slit	false	Full	1/8 in	1 1/2 in	1 1/2 in	0 in	0 in	1 1/2 in	
WL Chest Logo Placement from HPS		true	Full	1/8 in	7 1/2 in	7 in	-1/2 in	-1/2 in	7 in	Keep As Sample
WL Chest Logo Placement out from the CF Line		false	Full	1/8 in	3 1/4 in	3 1/4 in	0 in	-1/8 in	3 1/8 in	Follow Revised
CB Artwork Placement below CB Neck Seam	From CB neck seam to top Artwork	false	Full	1/8 in	1 1/2 in	1 1/4 in	-1/4 in	-1/4 in	1 1/4 in	Keep As Sample
Half Moon Height at CB		false	Full	1/8 in	3 in	3 in	0 in	-1/4 in	2 3/4 in	Reduce
Half Moon Width		false	Full	1/8 in	5 1/4 in	5 3/4 in	1/2 in	0 in	5 1/4 in	Back to Spec



## PPS - Anastasiya Zolotova

CREATED ON JAN 22, 2026 6:22 PM

PPS: SIZE:M, CREATED AT: 01-21-2026

SS26CT031 Easy Golf Polo

**FITTING DATE:** 1/22/25**MODEL/ATTENDEES:** Bigs, Cal, Lombardo, Anastasiya, Hyeyoung, Jeni, Sarah**STATUS:** PPS Approved to TOP**Fit Comments:**

1. Back body length came in +5/8", go back to spec. -> Dài thân sau out +5/8", vui lòng đảm bảo TS yêu cầu
2. Reduce neck width to 6 1/2" -> Giảm rộng cổ còn 6 1/2"
3. 2nd button placement changed POM to be measured from center of 1st button to center of 2nd. Came in +1/2", go back to spec.
4. WL Chest artwork placement from HPS came in at 7", keep as sample
5. WL chest artwork placement from CF move in to be 3 1/8" from CF.
6. Keep CB artwork placement as sample at 1 1/4" from CB neck seam.
7. Reduce half moon height to 2 3/4"
8. Reduce half moon width from sample to 5 1/4" (back to spec.)

**Construction/Workmanship:**

1. Please remove locker loop at CB neck. See image. -> Vui lòng bỏ dây treo ở giữa cổ trong
2. Please clean finish half moon at interior w/SNES. See image. -> May sạch mép may bán nguyệt (xem hình ảnh trang sau, điểm số 2 )
3. Improve placket edge, coming in wavy. See image. -> Nẹp cổ bị cong vênh, vui lòng cải thiện thẳng đẹp
4. WL chest artwork is crooked, please ensure artwork is parallel to hem -> Hình ép ngực trái đang bị lệch, vui lòng chỉnh lại để artwork song song với lai áo.

**FIT COMMENT:**

1. Dài thân sau out +5/8", vui lòng đảm bảo TS yêu cầu
2. Giảm rộng cổ còn 6 1/2"
3. Vị trí nút thứ 2 đã thay đổi, đo từ giữa nút thứ nhất đến giữa nút thứ 2, vui lòng theo dõi BTS ( xem hình ảnh trang sau)
4. Định vị hình ép ngực trái thân trước 7" từ HPS, như mẫu
5. Định vị hình ép ngực trái thân trước 3 1/8" từ giữa thân trước
7. Giảm cao bán nguyệt còn 2 3/4"
8. Giảm rộng bán nguyệt thành 5 1/4" (theo dõi BTS)

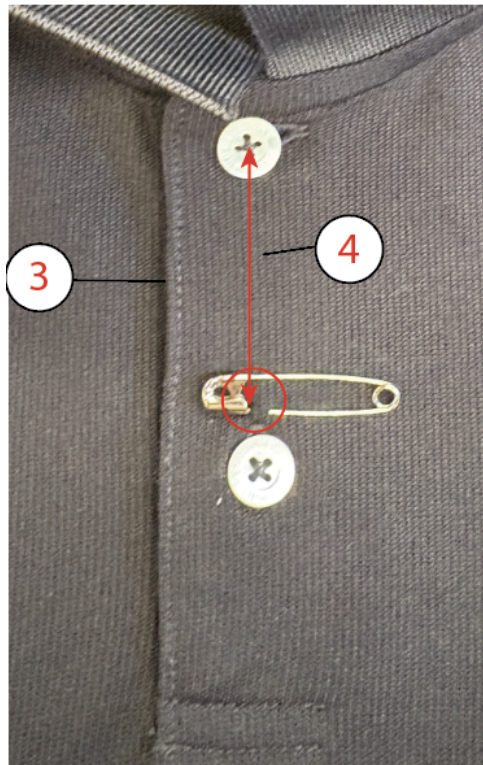


Screen Shot 2026-01-22 at 1.08.51 PM.jpg



## SS26CT031 Easy Golf Polo

1. Please remove locker loop at CB neck. -> Vui lòng bỏ dây treo ở giữa cổ trong
2. Please clean finish half moon at interior w/SNES. -> May sạch đường vắt sổ bán nguyệt w/SNES
3. Improve placket edge, coming in wavy. -> Cải thiện cạnh nẹp không bị cong vênh
4. 2nd button placement changed POM to be measured from center of 1st button to center of 2nd. Came in +1/2", go back to spec.  
-> Vị trí nút thứ 2 đã thay đổi, đo từ giữa nút thứ nhất đến giữa nút thứ 2, vui lòng theo dõi BTS ( xem hình ảnh trang sau)



Screen Shot 2026-01-22 at 1.46.00 PM.jpg