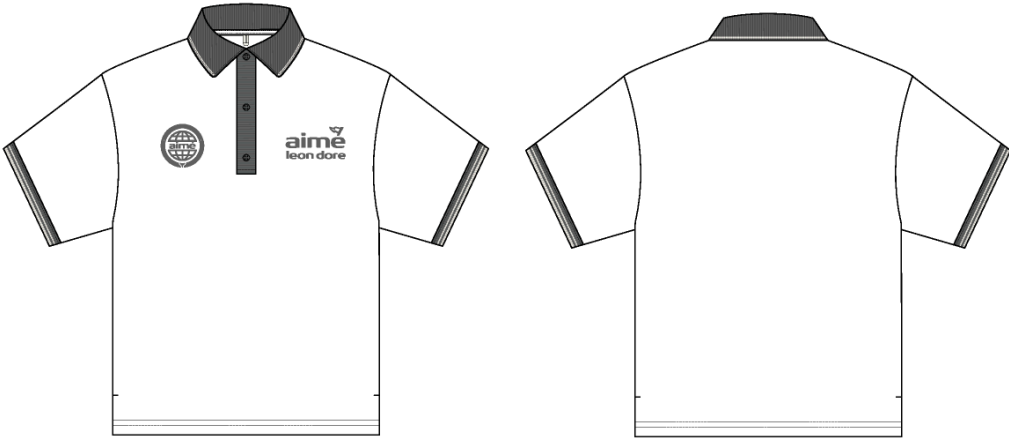


Golf Sport Polo

Name	Golf Sport Polo
Style No.	SS26CT032
Division	Mens
Category	Polos
Season	Spring/Summer
Year	2026
Size Scale	<div>M</div> -Sample size <div><div>XS</div><div>S</div><div>M</div><div>L</div><div>XL</div><div>XXL</div></div>
Style Status	Adopted
Factory	UN-AVAILABLE
Drop	Golf
Designer Name	Wes
TD Name	Anastasiya
Created by/Author	1/15/2026 Anastasiya Zolotova anastasiya.zolotova@aimeleondore.com



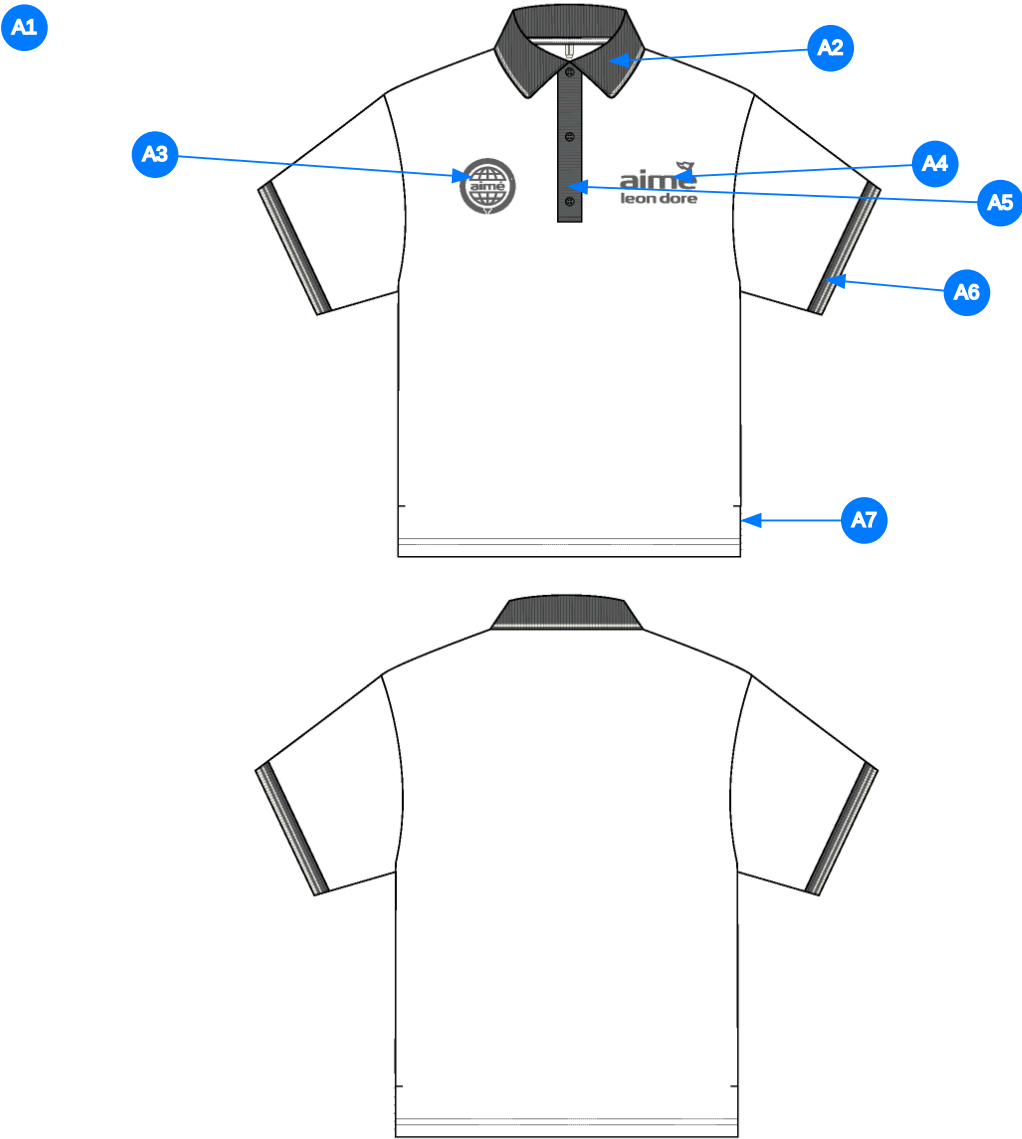
1_B&W-1



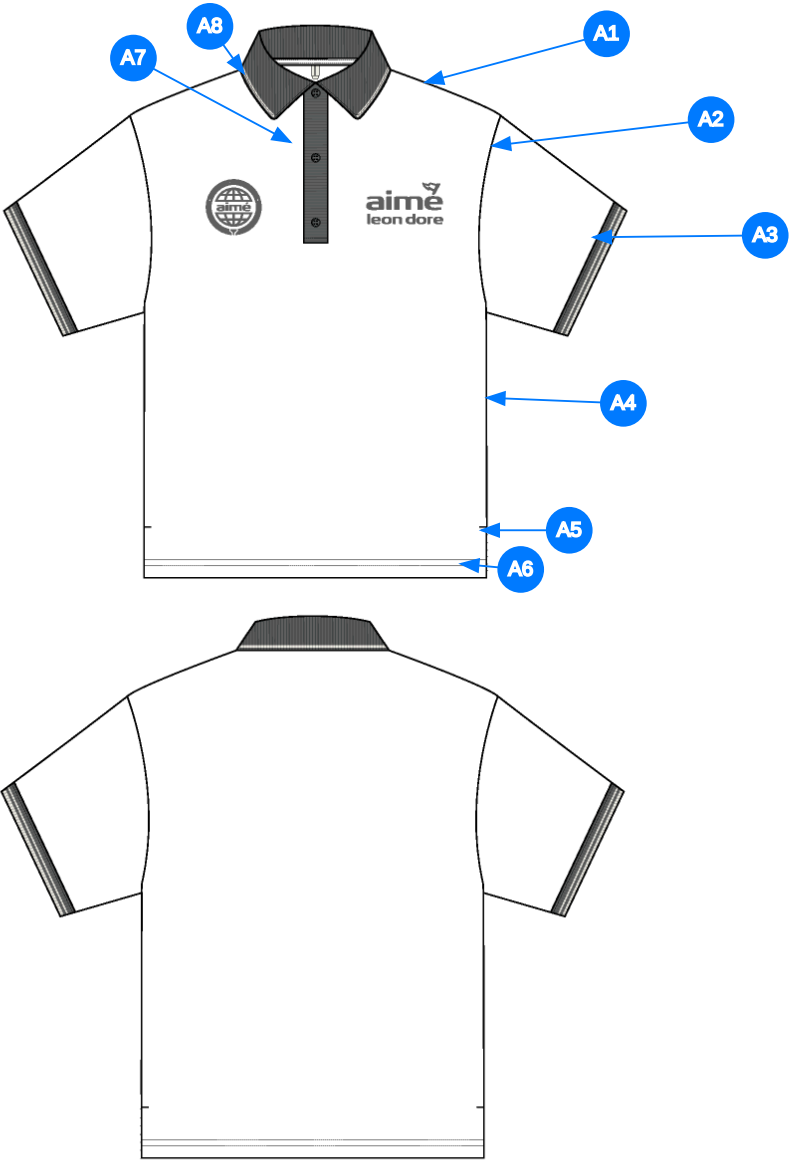
2_CLR-1

Comments (7)

- A1** FIT: SS GOLF ZIP POLO (SS25CT043)
- A2** RIB @ COLLAR - SEE FOLLOWING PAGES FOR ARTWORK DETAILS - COTTON/POLY TAPE ALONG BACK NECK
- A3** ARTWORK @ WR CHEST - SEE SEPARATE FILE FOR ARTWORK DETAILS
- A4** ARTWORK @ WL CHEST - SEE SEPARATE FILE FOR ARTWORK DETAILS
- A5** PIECED ON PLACKET W/ BUTTON CLOSURE -PLACKET IN SAME MATERIAL AS COLLAR - 4X BUTTONS TOTAL; 3 @ CF, 1, EXTRA - SIZE: 20L
- A6** 1X1 RIB @ SLEEVE CUFF - SEE ADDITIONAL FILE FOR STRIPE ARTWORK DETAILS - QUALITY SHOULD MATCH COLLAR
- A7** BEND BACK VENT @ SIDE SEAMS -BARTACK @ TOP EDGE



3_Construction Details-1



Comments (8)

- A1** STRADDLE STITCH @ SHOULDER
- A2** 1/4" SN TS @ ARMHOLE
- A3** 1/4" SN TS @ SLEEVE CUFFS
- A4** CLEAN SEAM FINISH @ SIDE SEAMS
- A5** 1/4" SN TS @ VENT - ADD BAR TACK @ TOP OF VENT
- A6** 1/4" DN TS @ BOTTOM HEM - TURN BACK W/ COVERLOCK STITCH
- A7** SNES @ PLACKET
- A8** 1/4" SNTS @ NECK

4_Stitching Details-1

Sample Size: M

POINT OF MEASURE	HOW TO MEASURE	CRITICAL	TYPE	TOLERANCE	XS	S	M	L	XL	XXL
Front Body Length	HPS to bottom edge	true	Full	1/2 in	-7/8 in	-7/8 in	28 1/2 in	7/8 in	7/8 in	7/8 in
Back Body Length	CB neck seam to bottom edge	true	Full	1/2 in	-7/8 in	-7/8 in	28 in	7/8 in	7/8 in	7/8 in
Shoulder Seam Forward	HPS to seam	false	Full	1/8 in	0 in	0 in	1/2 in	0 in	0 in	0 in
Shoulder Slope	Shoulder point perpendicular to HPS	false	Full	1/4 in	0 in	0 in	1 7/8 in	0 in	0 in	0 in
Front Neck Drop	HPS to neck seam	false	Full	1/8 in	-1/8 in	-1/8 in	3 3/4 in	1/8 in	1/8 in	1/8 in
Back Neck Drop	HPS to neck seam	false	Full	1/8 in	0 in	0 in	1/2 in	0 in	0 in	0 in
Back Neck Width	Seam to seam at back neck, at HPS point	false	Full	1/4 in	-1/4 in	-1/4 in	6 3/4 in	1/4 in	1/4 in	1/4 in
Across Shoulder	Seam to seam	false	Half	1/4 in	-3/4 in	-3/4 in	18 1/4 in	3/4 in	1 in	1 in
Across Front/Across Back Position from HPS		true	Full	0 in	-1/4 in	-1/4 in	7 in	1/4 in	1/4 in	1/4 in
Across Front	Down from HPS, Seam to seam	false	Half	1/4 in	-3/4 in	-3/4 in	16 3/4 in	3/4 in	1 in	1 in
Across Back	Down from HPS, Seam to Seam	false	Half	1/4 in	-3/4 in	-3/4 in	17 1/4 in	3/4 in	1 in	1 in
Chest Width	1" Below armhole- edge to edge	true	Half	1/4 in	-1 in	-1 in	21 1/2 in	1 in	1 1/2 in	1 1/2 in
Bottom Opening Width- At Edge	At bottom edge	true	Half	1/4 in	-1 in	-1 in	21 1/2 in	1 in	1 1/2 in	1 1/2 in
Bottom Hem Height	Bottom edge to stitch line or trim seam	false	Full	1/8 in	0 in	0 in	3/4 in	0 in	0 in	0 in
Sleeve Length from CB Neck	3-point measure from CB Neck to shoulder point to sleeve edge	true	Full	3/8 in	-3/4 in	-3/4 in	18 3/4 in	3/4 in	1 in	1 in
Armhole Drop	Below HPS - measure perpendicular	false	Full	1/4 in	-3/8 in	-3/8 in	11 1/2 in	3/8 in	1/2 in	1/2 in
Bicep Width	1" below armhole- edge to edge	false	Half	1/4 in	-3/8 in	-3/8 in	8 in	3/8 in	1/2 in	1/2 in
Sleeve Opening Width- At Edge	At edge	false	Half	1/4 in	-3/8 in	-3/8 in	6 3/4 in	3/8 in	3/8 in	3/8 in
Cuff Height	Cuff edge to seam	false	Full	1/8 in	0 in	0 in	1/2 in	0 in	0 in	0 in
Collar Point Length	Neck seam to collar point, along edge	false	Full	1/8 in	0 in	0 in	2 3/4 in	0 in	0 in	0 in
Collar Height at CB	Neck seam to collar edge at CB	false	Full	1/8 in	0 in	0 in	3 1/8 in	0 in	0 in	0 in
Collar Length along the edge	Collar point to collar point, along the edge	false	Full	3/8 in	-5/8 in	-5/8 in	18 in	5/8 in	5/8 in	5/8 in
CF Placket Length	CF neck drop to bottom of placket	true	Full	1/8 in	0 in	0 in	6 3/4 in	0 in	0 in	0 in
CF Placket Width	Width of placket edge to edge	false	Full	1/8 in	0 in	0 in	1 1/4 in	0 in	0 in	0 in
1st Button Below Neck Seam	From top of placket edge to center of 1st Button	false	Full	1/8 in	0 in	0 in	5/8 in	0 in	0 in	0 in
Last Button Placement from Placket Edge	To Placket edge to center of button	true	Full	0 in	0 in	0 in	1 3/4 in	0 in	0 in	0 in
Side Slit Height	From bottom edge to top of slit	false	Full	1/8 in	0 in	0 in	1 1/2 in	0 in	0 in	0 in
Center WL Artwork on WR Artwork (Not Including Flag)		true	Full	1/8 in	0 in	0 in	0 in	0 in	0 in	0 in
WL Chest Logo Placement out from the CF Line		false	Full	1/8 in	-1/8 in	-1/8 in	1 7/8 in	1/8 in	1/8 in	1/8 in
WR Chest Artwork Placement from HPS		true	Full	1/8 in	-1/4 in	-1/4 in	7 in	1/4 in	1/4 in	1/4 in
WR Chest Artwork Placement Out from CF Line		false	Full	1/8 in	0 in	0 in	2 1/2 in	0 in	0 in	0 in

Sample Size: M

POINT OF MEASURE	HOW TO MEASURE	CRITICAL	TYPE	TOLERANCE	XS	S	M	L	XL	XXL
Front Body Length	HPS to bottom edge	true	Full	1/2 in	26 3/4 in	27 5/8 in	28 1/2 in	29 3/8 in	30 1/4 in	31 1/8 in
Back Body Length	CB neck seam to bottom edge	true	Full	1/2 in	26 1/4 in	27 1/8 in	28 in	28 7/8 in	29 3/4 in	30 5/8 in
Shoulder Seam Forward	HPS to seam	false	Full	1/8 in	1/2 in	1/2 in	1/2 in	1/2 in	1/2 in	1/2 in
Shoulder Slope	Shoulder point perpendicular to HPS	false	Full	1/4 in	1 7/8 in	1 7/8 in	1 7/8 in	1 7/8 in	1 7/8 in	1 7/8 in
Front Neck Drop	HPS to neck seam	false	Full	1/8 in	3 1/2 in	3 5/8 in	3 3/4 in	3 7/8 in	4 in	4 1/8 in
Back Neck Drop	HPS to neck seam	false	Full	1/8 in	1/2 in	1/2 in	1/2 in	1/2 in	1/2 in	1/2 in
Back Neck Width	Seam to seam at back neck, at HPS point	false	Full	1/4 in	6 1/4 in	6 1/2 in	6 3/4 in	7 in	7 1/4 in	7 1/2 in
Across Shoulder	Seam to seam	false	Half	1/4 in	16 3/4 in	17 1/2 in	18 1/4 in	19 in	20 in	21 in
Across Front/Across Back Position from HPS		true	Full	0 in	6 1/2 in	6 3/4 in	7 in	7 1/4 in	7 1/2 in	7 3/4 in
Across Front	Down from HPS, Seam to seam	false	Half	1/4 in	15 1/4 in	16 in	16 3/4 in	17 1/2 in	18 1/2 in	19 1/2 in
Across Back	Down from HPS, Seam to Seam	false	Half	1/4 in	15 3/4 in	16 1/2 in	17 1/4 in	18 in	19 in	20 in
Chest Width	1" Below armhole- edge to edge	true	Half	1/4 in	19 1/2 in	20 1/2 in	21 1/2 in	22 1/2 in	24 in	25 1/2 in
Bottom Opening Width- At Edge	At bottom edge	true	Half	1/4 in	19 1/2 in	20 1/2 in	21 1/2 in	22 1/2 in	24 in	25 1/2 in
Bottom Hem Height	Bottom edge to stitch line or trim seam	false	Full	1/8 in	3/4 in	3/4 in	3/4 in	3/4 in	3/4 in	3/4 in
Sleeve Length from CB Neck	3-point measure from CB Neck to shoulder point to sleeve edge	true	Full	3/8 in	17 1/4 in	18 in	18 3/4 in	19 1/2 in	20 1/2 in	21 1/2 in
Armhole Drop	Below HPS - measure perpendicular	false	Full	1/4 in	10 3/4 in	11 1/8 in	11 1/2 in	11 7/8 in	12 3/8 in	12 7/8 in
Bicep Width	1" below armhole- edge to edge	false	Half	1/4 in	7 1/4 in	7 5/8 in	8 in	8 3/8 in	8 7/8 in	9 3/8 in
Sleeve Opening Width- At Edge	At edge	false	Half	1/4 in	6 in	6 3/8 in	6 3/4 in	7 1/8 in	7 1/2 in	7 7/8 in
Cuff Height	Cuff edge to seam	false	Full	1/8 in	1/2 in	1/2 in	1/2 in	1/2 in	1/2 in	1/2 in
Collar Point Length	Neck seam to collar point, along edge	false	Full	1/8 in	2 3/4 in	2 3/4 in	2 3/4 in	2 3/4 in	2 3/4 in	2 3/4 in
Collar Height at CB	Neck seam to collar edge at CB	false	Full	1/8 in	3 1/8 in	3 1/8 in	3 1/8 in	3 1/8 in	3 1/8 in	3 1/8 in
Collar Length along the edge	Collar point to collar point, along the edge	false	Full	3/8 in	16 3/4 in	17 3/8 in	18 in	18 5/8 in	19 1/4 in	19 7/8 in
CF Placket Length	CF neck drop to bottom of placket	true	Full	1/8 in	6 3/4 in	6 3/4 in	6 3/4 in	6 3/4 in	6 3/4 in	6 3/4 in
CF Placket Width	Width of placket edge to edge	false	Full	1/8 in	1 1/4 in	1 1/4 in	1 1/4 in	1 1/4 in	1 1/4 in	1 1/4 in
1st Button Below Neck Seam	From top of placket edge to center of 1st Button	false	Full	1/8 in	5/8 in	5/8 in	5/8 in	5/8 in	5/8 in	5/8 in
Last Button Placement from Placket Edge	To Placket edge to center of button	true	Full	0 in	1 3/4 in	1 3/4 in	1 3/4 in	1 3/4 in	1 3/4 in	1 3/4 in
Side Slit Height	From bottom edge to top of slit	false	Full	1/8 in	1 1/2 in	1 1/2 in	1 1/2 in	1 1/2 in	1 1/2 in	1 1/2 in
Center WL Artwork on WR Artwork (Not Including Flag)		true	Full	1/8 in	0 in	0 in	0 in	0 in	0 in	0 in
WL Chest Logo Placement out from the CF Line		false	Full	1/8 in	1 5/8 in	1 3/4 in	1 7/8 in	2 in	2 1/8 in	2 1/4 in
WR Chest Artwork Placement from HPS		true	Full	1/8 in	6 1/2 in	6 3/4 in	7 in	7 1/4 in	7 1/2 in	7 3/4 in
WR Chest Artwork Placement Out from CF Line		false	Full	1/8 in	2 1/2 in	2 1/2 in	2 1/2 in	2 1/2 in	2 1/2 in	2 1/2 in

Measured Size: M

POINT OF MEASURE	HOW TO MEASURE	CRITICAL	TYPE	TOLERANCE	EXPECTED	PPS - RCVD	VARIANCE	ADJUST BY +/-	REVISED SPEC	MEASUREMENT NOTES
Front Body Length	HPS to bottom edge	true	Full	1/2 in	28 1/2 in	28 5/8 in	1/8 in	0 in	28 1/2 in	
Back Body Length	CB neck seam to bottom edge	true	Full	1/2 in	28 in	28 1/4 in	1/4 in	0 in	28 in	
Shoulder Seam Forward	HPS to seam	false	Full	1/8 in	1/2 in	1/2 in	0 in	0 in	1/2 in	
Shoulder Slope	Shoulder point perpendicular to HPS	false	Full	1/4 in	1 7/8 in	2 in	1/8 in	0 in	1 7/8 in	
Front Neck Drop	HPS to neck seam	false	Full	1/8 in	3 3/4 in	4 in	1/4 in	0 in	3 3/4 in	Back to Spec
Back Neck Drop	HPS to neck seam	false	Full	1/8 in	1/2 in	1/2 in	0 in	0 in	1/2 in	
Back Neck Width	Seam to seam at back neck, at HPS point	false	Full	1/4 in	6 3/4 in	6 5/8 in	-1/8 in	0 in	6 3/4 in	
Across Shoulder	Seam to seam	false	Half	1/4 in	18 1/4 in	18 in	-1/4 in	0 in	18 1/4 in	
Across Front/Across Back Position from HPS		true	Full	0 in	7 in	7 in	0 in	0 in	7 in	
Across Front	Down from HPS, Seam to seam	false	Half	1/4 in	16 3/4 in	16 3/8 in	-3/8 in	0 in	16 3/4 in	Back to Spec
Across Back	Down from HPS, Seam to Seam	false	Half	1/4 in	17 1/4 in	17 1/8 in	-1/8 in	0 in	17 1/4 in	
Chest Width	1" Below armhole- edge to edge	true	Half	1/4 in	21 1/2 in	21 1/4 in	-1/4 in	0 in	21 1/2 in	
Bottom Opening Width- At Edge	At bottom edge	true	Half	1/4 in	21 1/2 in	21 1/4 in	-1/4 in	0 in	21 1/2 in	
Bottom Hem Height	Bottom edge to stitch line or trim seam	false	Full	1/8 in	3/4 in	3/4 in	0 in	0 in	3/4 in	
Sleeve Length from CB Neck	3-point measure from CB Neck to shoulder point to sleeve edge	true	Full	3/8 in	18 3/4 in	18 1/2 in	-1/4 in	0 in	18 3/4 in	
Armhole Drop	Below HPS - measure perpendicular	false	Full	1/4 in	11 1/2 in	11 1/2 in	0 in	0 in	11 1/2 in	
Bicep Width	1" below armhole- edge to edge	false	Half	1/4 in	8 in	8 in	0 in	0 in	8 in	
Sleeve Opening Width- At Edge	At edge	false	Half	1/4 in	6 3/4 in	6 3/4 in	0 in	0 in	6 3/4 in	
Cuff Height	Cuff edge to seam	false	Full	1/8 in	1/2 in	1/2 in	0 in	0 in	1/2 in	
Collar Point Length	Neck seam to collar point, along edge	false	Full	1/8 in	2 3/4 in	2 3/4 in	0 in	0 in	2 3/4 in	
Collar Height at CB	Neck seam to collar edge at CB	false	Full	1/8 in	3 1/8 in	3 1/8 in	0 in	0 in	3 1/8 in	
Collar Length along the edge	Collar point to collar point, along the edge	false	Full	3/8 in	18 in	18 in	0 in	0 in	18 in	
CF Placket Length	CF neck drop to bottom of placket	true	Full	1/8 in	6 3/4 in	6 3/4 in	0 in	0 in	6 3/4 in	
CF Placket Width	Width of placket edge to edge	false	Full	1/8 in	1 1/4 in	1 1/4 in	0 in	0 in	1 1/4 in	
1st Button Below Neck Seam	From top of placket edge to center of 1st Button	false	Full	1/8 in	5/8 in	5/8 in	0 in	0 in	5/8 in	
Last Button Placement from Placket Edge	To Placket edge to center of button	true	Full	0 in	1 3/4 in	1 3/4 in	0 in	0 in	1 3/4 in	
Side Slit Height	From bottom edge to top of slit	false	Full	1/8 in	1 1/2 in	1 1/2 in	0 in	0 in	1 1/2 in	
Center WL Artwork on WR Artwork (Not Including Flag)		true	Full	1/8 in	7 in	0 in	0 in	-7 in	0 in	
WL Chest Logo Placement out from the CF Line		false	Full	1/8 in	1 7/8 in	1 3/4 in	-1/8 in	0 in	1 7/8 in	
WR Chest Artwork Placement from HPS		true	Full	1/8 in	7 in	6 3/4 in	-1/4 in	0 in	7 in	Back to Spec
WR Chest Artwork Placement Out from CF Line		false	Full	1/8 in	2 1/2 in	2 1/2 in	0 in	0 in	2 1/2 in	

PPS - Anastasiya Zolotova

CREATED ON JAN 15, 2026 5:14 PM

PPS: SIZE:M, CREATED AT: 01-12-2026

SS26CT032 Golf Sport Polo

FITTING DATE: 1/13/25**MODEL/ATTENDEES:** Bigs, Cal, Lombardo, Anastasiya, Hyeyoung, Jeni, Sarah**STATUS:** PPS Approved to TOP**Fit Comments:**

1. Front neck drop came in +1/4", go back to spec. See image neck is visibly low on fit model.
2. Across front came in -3/8", go back to spec.
3. Go back to spec on WR artwork from HPS should be 7".
4. Center WL artwork (not including flag) on WR artwork. See image. Updated POM

Construction/Workmanship:

1. There is pulling at placket bottom edge please improve workmanship and ensure the rib isn't holding the body fabric .
2. The neck tape extends into the rib placket, can fty stop neck tape before placket?
3. Due to neck tape extending over placket there is a visible contrast top stitch on placket and the team wants to stop the 1/4 SNTS before placket.
4. Team doesn't want to see contrast thread color is it possible to see a mock up image for both options:
 - DTM thread to rib there to see if it shows on exterior
 - Clean finish rib placket edge by top applying neck tape (not binding) worried this option will add too much bulk.

FIT COMMENT

1. Hạ cổ trước bị out thông số +1/4". Xem hình ảnh model, vui lòng đảm bảo thông số.
2. Ngang trước bị -3/8", vui lòng đảm bảo thông số
3. Đảm bảo hình thêu ngực phải định vị 7" từ HPS
4. Giữa của hình thêu ngực phải cân đối giữa với hình ép ngực trái (không bao gồm lá cờ). Vui lòng xem hình ảnh



Screen Shot 2026-01-14 at 5.10.39 PM.jpg

SS26CT032 Golf Sport Polo

1. Go back to spec on WR artwork from HPS should be 7". -> Đảm bảo định vị hình thêu ngực phải 7" từ HPS
2. Center WL artwork (not including flag) on WR artwork. See image. Updated POM

Giữa của hình thêu ngực phải cân đối giữa với hình ép ngực trái (không bao gồm lá cờ). Vui lòng xem hình ảnh



Screen Shot 2026-01-15 at 2.40.40 PM.jpg

1. Tape cổ may trên nếp cổ, có thể may kết thúc trước đường may nếp không?

2. Vui lòng điều chỉnh chỉ tệp màu với màu rib, điều chỉnh 2 option:

- Chỉ tệp màu với rib nhưng không bị lộ màu chỉ trên nền vải chính bên ngoài
- May sạch cạnh nếp cổ (không phải viền) SS26CT032 Golf Sport Polo

1. The neck tape extends into the rib placket, can fty stop neck tape before placket?

2. Team doesn't want to see contrast thread color is it possible to see a mock up image for both options:

- DTM thread to rib there to see if it shows on exterior
- Clean finish rib placket edge by top applying neck tape (not binding) worried this option will add too much bulk.



Screen Shot 2026-01-15 at 2.45.28 PM.jpg