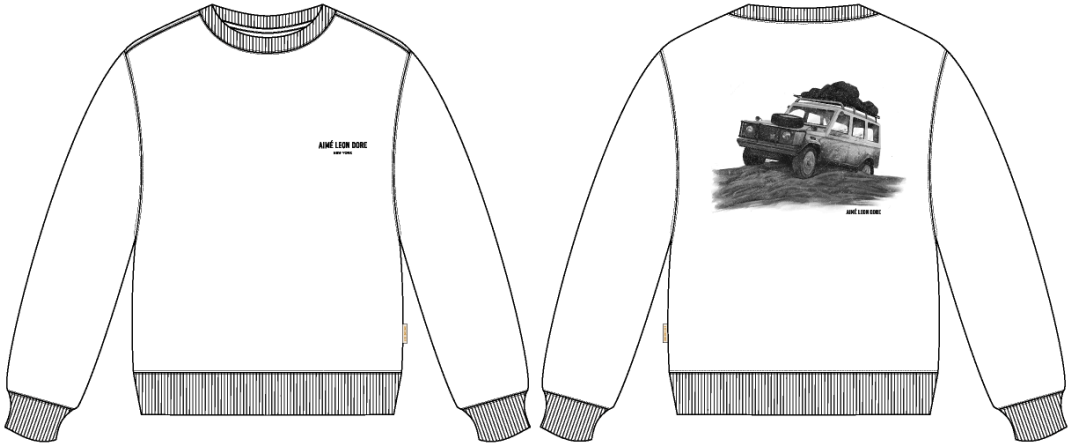


| | |
|-------------------|---|
| Name | ALD Safari Crewneck |
| Style No. | SS26CS011 |
| Division | Mens |
| Category | Sweatshirts |
| Season | Spring/Summer |
| Year | 2026 |
| Size Scale | <div>M</div> -Sample size <div><div>XS</div><div>S</div><div>M</div><div>L</div><div>XL</div><div>XXL</div></div> |
| Style Status | Adopted |
| Factory | UN-AVAILABLE |
| Designer Name | Wes |
| TD Name | Anastasiya |
| Created by/Author | 8/27/2025 Anastasiya Zolotova anastasiya.zolotova@aimeleondore.com |

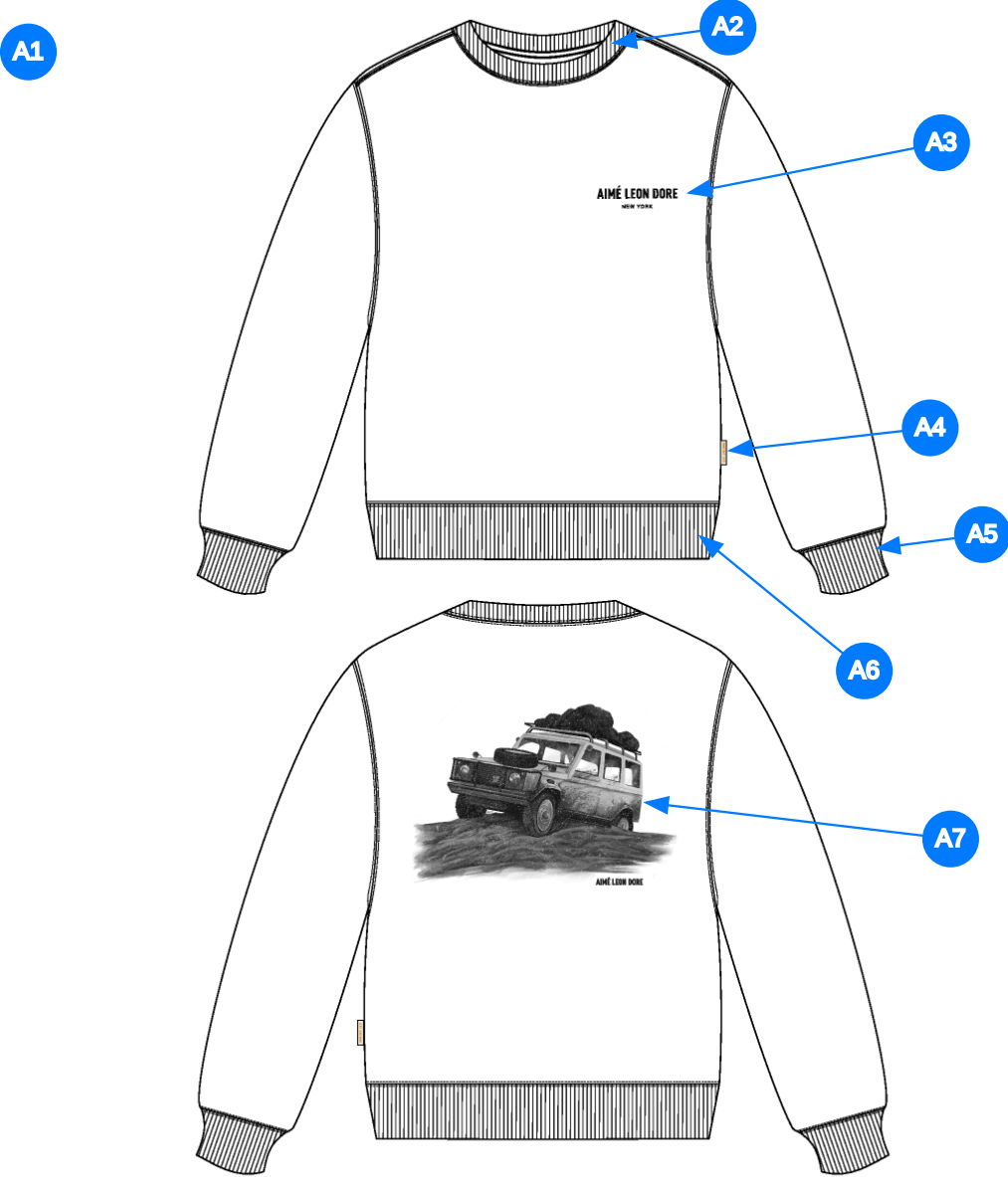
ALD Safari Crewneck



1_B&W-1



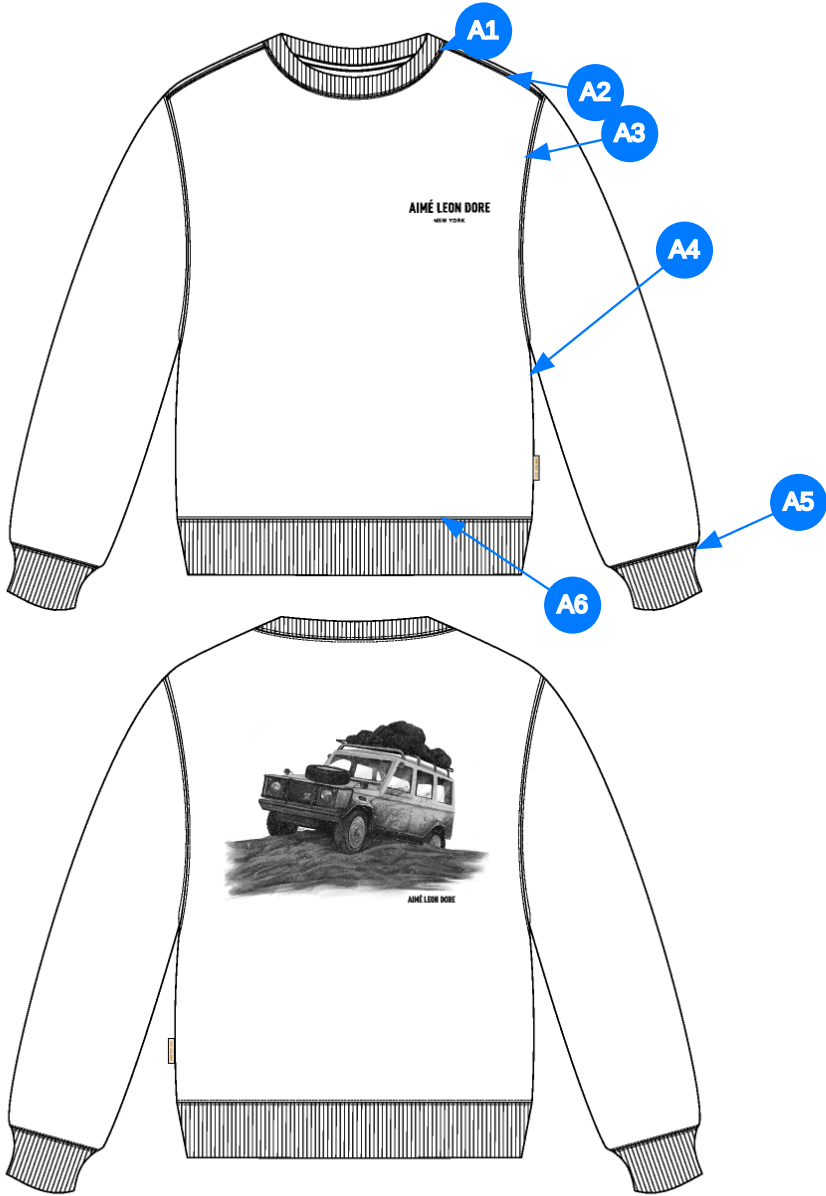
2_CLR-1



Comments (7)

- A1** FIT: CREWNECK BLOCK
- A2** 2X2 RIB DOUBLED @ COLLAR - HERRINGBONE TAPE ALONG NECK
- A3** ARTWORK @ WL CHEST - SEE SEPARATE ARTWORK FILE FOR DETAILS
- A4** ALD WOVEN LABEL @ SIDE SEAM
- A5** 2X2 RIB DOUBLED @ SLEEVE CUFF
- A6** 2X2 RIB DOUBLED @ BOTTOM HEM
- A7** ARTWORK @ CENTER BACK - SEE SEPARATE FILE FOR ARTWORK DETAILS

3_Construction Details-1



Comments (6)

- A1** STRADDLE STITCH @ NECK
- A2** STRADDLE STITCH @ SHOULDER
- A3** STRADDLE STITCH @ ARMHOLE
- A4** CLEAN SEAM FINISH @ SIDE SEAM
- A5** STRADDLE STITCH @ SLEEVE CUFF
- A6** STRADDLE STITCH @ BOTTOM HEM

4_Stiching Details-1

Sample Size: M

| POINT OF MEASURE | HOW TO MEASURE | CRITICAL | TYPE | TOLERANCE | XS | S | M | L | XL | XXL |
|---|---|----------|------|-----------|---------|---------|-----------|--------|----------|----------|
| Front Body Length | HPS to bottom edge | true | Full | 1/2 in | -7/8 in | -7/8 in | 27 in | 7/8 in | 7/8 in | 7/8 in |
| Back Body Length | CB neck seam to bottom edge | true | Full | 1/2 in | -7/8 in | -7/8 in | 25 3/4 in | 7/8 in | 7/8 in | 7/8 in |
| Shoulder Seam Forward | HPS to seam | false | Full | 1/8 in | 0 in | 0 in | 1/2 in | 0 in | 0 in | 0 in |
| Shoulder Slope | Shoulder point perpendicular to HPS | false | Full | 1/4 in | 0 in | 0 in | 2 in | 0 in | 0 in | 0 in |
| Front Neck Drop | HPS to neck seam | false | Full | 1/8 in | -1/8 in | -1/8 in | 4 in | 1/8 in | 1/8 in | 1/8 in |
| Back Neck Drop | HPS to neck seam | false | Full | 1/8 in | 0 in | 0 in | 1 1/4 in | 0 in | 0 in | 0 in |
| Back Neck Width | Seam to seam at back neck, at HPS point | false | Full | 1/4 in | -1/4 in | -1/4 in | 7 3/4 in | 1/4 in | 1/4 in | 1/4 in |
| Neck Trim Height | Neck Seam to trim edge | false | Full | 1/8 in | 0 in | 0 in | 13/16 in | 0 in | 0 in | 0 in |
| Minimum Neck Stretch | | true | Half | 0 in | 0 in | 0 in | 11 1/2 in | 0 in | 0 in | 0 in |
| Across Shoulder | Seam to seam | false | Half | 1/4 in | -3/4 in | -3/4 in | 20 1/2 in | 3/4 in | 1 in | 1 in |
| Across Front/Across Back Position from HPS | | true | Full | 0 in | -1/4 in | -1/4 in | 7 in | 1/4 in | 1/4 in | 1/4 in |
| Across Front | Down from HPS, Seam to seam | false | Half | 1/4 in | -3/4 in | -3/4 in | 19 in | 3/4 in | 1 in | 1 in |
| Across Back | Down from HPS, Seam to Seam | false | Half | 1/4 in | -3/4 in | -3/4 in | 19 1/2 in | 3/4 in | 1 in | 1 in |
| Chest Width | 1" Below armhole- edge to edge | true | Half | 1/4 in | -1 in | -1 in | 22 3/4 in | 1 in | 1 1/2 in | 1 1/2 in |
| Bottom Opening 2" Above Rib Knit Seam | Straight, Extended (Pattern Measurement) | true | Half | 1/4 in | -1 in | -1 in | 21 3/4 in | 1 in | 1 1/2 in | 1 1/2 in |
| Bottom Opening Width- At Seam | Straight with seam relaxed | true | Half | 1/4 in | -1 in | -1 in | 20 1/4 in | 1 in | 1 1/2 in | 1 1/2 in |
| Bottom Opening Width- At Edge | At bottom edge | true | Half | 1/4 in | -1 in | -1 in | 17 in | 1 in | 1 1/2 in | 1 1/2 in |
| Bottom Hem Height | Bottom edge to stitch line or trim seam | false | Full | 1/8 in | 0 in | 0 in | 2 3/4 in | 0 in | 0 in | 0 in |
| Sleeve Length from CB Neck | 3-point measure from CB Neck to shoulder point to sleeve edge | true | Full | 1/2 in | -1 in | -1 in | 35 in | 1 in | 1 in | 1 in |
| Armhole Drop | Below HPS - measure perpendicular | false | Full | 1/4 in | -3/8 in | -3/8 in | 12 1/2 in | 3/8 in | 1/2 in | 1/2 in |
| Bicep Width | 1" below armhole- edge to edge | false | Half | 1/8 in | -3/8 in | -3/8 in | 9 1/2 in | 3/8 in | 1/2 in | 1/2 in |
| Forearm Width | 9" up from sleeve cuff edge | false | Half | 1/8 in | -1/4 in | -1/4 in | 7 1/4 in | 1/4 in | 3/8 in | 3/8 in |
| Sleeve Opening Width 1" Above Rib Knit Seam | Straight, Extended (Pattern Measurement) | false | Half | 1/8 in | -1/4 in | -1/4 in | 5 3/8 in | 1/4 in | 3/8 in | 3/8 in |
| Sleeve Opening Width- At Seam | Width at Seam | false | Half | 1/4 in | -1/4 in | -1/4 in | 4 3/4 in | 1/4 in | 3/8 in | 3/8 in |
| Sleeve Opening Width- At Edge | At edge | false | Half | 1/8 in | -1/4 in | -1/4 in | 3 3/4 in | 1/4 in | 1/4 in | 1/4 in |
| Sleeve Cuff Height | Cuff edge to seam | false | Full | 1/8 in | 0 in | 0 in | 2 3/4 in | 0 in | 0 in | 0 in |
| WL Chest Artwork Placement from HPS to Top Edge | | true | Full | 1/8 in | -1/8 in | -1/8 in | 7 3/4 in | 1/8 in | 1/8 in | 1/8 in |
| WL Artwork Placement Out from CF Line | | false | Full | 1/8 in | -1/8 in | -1/8 in | 2 1/2 in | 1/8 in | 1/8 in | 1/8 in |
| CB Artwork Placement below CB Neck Seam | From CB Neck Seam to Top Edge of Artwork | false | Full | 1/8 in | 0 in | 0 in | 3 1/2 in | 0 in | 0 in | 0 in |
| Loop Label Placement at Sideseam | Bottom edge to bottom of loop label, at the WL side seam | false | Full | 1/8 in | 0 in | 0 in | 7 in | 0 in | 0 in | 0 in |

Sample Size: M

| POINT OF MEASURE | HOW TO MEASURE | CRITICAL | TYPE | TOLERANCE | XS | S | M | L | XL | XXL |
|---|---|----------|------|-----------|-----------|-----------|-----------|-----------|-----------|-----------|
| Front Body Length | HPS to bottom edge | true | Full | 1/2 in | 25 1/4 in | 26 1/8 in | 27 in | 27 7/8 in | 28 3/4 in | 29 5/8 in |
| Back Body Length | CB neck seam to bottom edge | true | Full | 1/2 in | 24 in | 24 7/8 in | 25 3/4 in | 26 5/8 in | 27 1/2 in | 28 3/8 in |
| Shoulder Seam Forward | HPS to seam | false | Full | 1/8 in | 1/2 in | 1/2 in | 1/2 in | 1/2 in | 1/2 in | 1/2 in |
| Shoulder Slope | Shoulder point perpendicular to HPS | false | Full | 1/4 in | 2 in | 2 in | 2 in | 2 in | 2 in | 2 in |
| Front Neck Drop | HPS to neck seam | false | Full | 1/8 in | 3 3/4 in | 3 7/8 in | 4 in | 4 1/8 in | 4 1/4 in | 4 3/8 in |
| Back Neck Drop | HPS to neck seam | false | Full | 1/8 in | 1 1/4 in | 1 1/4 in | 1 1/4 in | 1 1/4 in | 1 1/4 in | 1 1/4 in |
| Back Neck Width | Seam to seam at back neck, at HPS point | false | Full | 1/4 in | 7 1/4 in | 7 1/2 in | 7 3/4 in | 8 in | 8 1/4 in | 8 1/2 in |
| Neck Trim Height | Neck Seam to trim edge | false | Full | 1/8 in | 13/16 in | 13/16 in | 13/16 in | 13/16 in | 13/16 in | 13/16 in |
| Minimum Neck Stretch | | true | Half | 0 in | 11 1/2 in | 11 1/2 in | 11 1/2 in | 11 1/2 in | 11 1/2 in | 11 1/2 in |
| Across Shoulder | Seam to seam | false | Half | 1/4 in | 19 in | 19 3/4 in | 20 1/2 in | 21 1/4 in | 22 1/4 in | 23 1/4 in |
| Across Front/Across Back Position from HPS | | true | Full | 0 in | 6 1/2 in | 6 3/4 in | 7 in | 7 1/4 in | 7 1/2 in | 7 3/4 in |
| Across Front | Down from HPS, Seam to seam | false | Half | 1/4 in | 17 1/2 in | 18 1/4 in | 19 in | 19 3/4 in | 20 3/4 in | 21 3/4 in |
| Across Back | Down from HPS, Seam to Seam | false | Half | 1/4 in | 18 in | 18 3/4 in | 19 1/2 in | 20 1/4 in | 21 1/4 in | 22 1/4 in |
| Chest Width | 1" Below armhole- edge to edge | true | Half | 1/4 in | 20 3/4 in | 21 3/4 in | 22 3/4 in | 23 3/4 in | 25 1/4 in | 26 3/4 in |
| Bottom Opening 2" Above Rib Knit Seam | Straight, Extended (Pattern Measurement) | true | Half | 1/4 in | 19 3/4 in | 20 3/4 in | 21 3/4 in | 22 3/4 in | 24 1/4 in | 25 3/4 in |
| Bottom Opening Width- At Seam | Straight with seam relaxed | true | Half | 1/4 in | 18 1/4 in | 19 1/4 in | 20 1/4 in | 21 1/4 in | 22 3/4 in | 24 1/4 in |
| Bottom Opening Width- At Edge | At bottom edge | true | Half | 1/4 in | 15 in | 16 in | 17 in | 18 in | 19 1/2 in | 21 in |
| Bottom Hem Height | Bottom edge to stitch line or trim seam | false | Full | 1/8 in | 2 3/4 in | 2 3/4 in | 2 3/4 in | 2 3/4 in | 2 3/4 in | 2 3/4 in |
| Sleeve Length from CB Neck | 3-point measure from CB Neck to shoulder point to sleeve edge | true | Full | 1/2 in | 33 in | 34 in | 35 in | 36 in | 37 in | 38 in |
| Armhole Drop | Below HPS - measure perpendicular | false | Full | 1/4 in | 11 3/4 in | 12 1/8 in | 12 1/2 in | 12 7/8 in | 13 3/8 in | 13 7/8 in |
| Bicep Width | 1" below armhole- edge to edge | false | Half | 1/8 in | 8 3/4 in | 9 1/8 in | 9 1/2 in | 9 7/8 in | 10 3/8 in | 10 7/8 in |
| Forearm Width | 9" up from sleeve cuff edge | false | Half | 1/8 in | 6 3/4 in | 7 in | 7 1/4 in | 7 1/2 in | 7 7/8 in | 8 1/4 in |
| Sleeve Opening Width 1" Above Rib Knit Seam | Straight, Extended (Pattern Measurement) | false | Half | 1/8 in | 4 7/8 in | 5 1/8 in | 5 3/8 in | 5 5/8 in | 6 in | 6 3/8 in |
| Sleeve Opening Width- At Seam | Width at Seam | false | Half | 1/4 in | 4 1/4 in | 4 1/2 in | 4 3/4 in | 5 in | 5 3/8 in | 5 3/4 in |
| Sleeve Opening Width- At Edge | At edge | false | Half | 1/8 in | 3 1/4 in | 3 1/2 in | 3 3/4 in | 4 in | 4 1/4 in | 4 1/2 in |
| Sleeve Cuff Height | Cuff edge to seam | false | Full | 1/8 in | 2 3/4 in | 2 3/4 in | 2 3/4 in | 2 3/4 in | 2 3/4 in | 2 3/4 in |
| WL Chest Artwork Placement from HPS to Top Edge | | true | Full | 1/8 in | 7 1/2 in | 7 5/8 in | 7 3/4 in | 7 7/8 in | 8 in | 8 1/8 in |
| WL Artwork Placement Out from CF Line | | false | Full | 1/8 in | 2 1/4 in | 2 3/8 in | 2 1/2 in | 2 5/8 in | 2 3/4 in | 2 7/8 in |
| CB Artwork Placement below CB Neck Seam | From CB Neck Seam to Top Edge of Artwork | false | Full | 1/8 in | 3 1/2 in | 3 1/2 in | 3 1/2 in | 3 1/2 in | 3 1/2 in | 3 1/2 in |
| Loop Label Placement at Sideseam | Bottom edge to bottom of loop label, at the WL side seam | false | Full | 1/8 in | 7 in | 7 in | 7 in | 7 in | 7 in | 7 in |

Measured Size: M

| POINT OF MEASURE | HOW TO MEASURE | CRITICAL | TYPE | TOLERANCE | EXPECTED | PPS - RCVD | VARIANCE | ADJUST BY +/- | REVISED SPEC | MEASUREMENT NOTES |
|---|---|----------|------|-----------|-----------|------------|----------|---------------|--------------|-------------------|
| Front Body Length | HPS to bottom edge | true | Full | 1/2 in | 27 in | 27 in | 0 in | 0 in | 27 in | |
| Back Body Length | CB neck seam to bottom edge | true | Full | 1/2 in | 25 3/4 in | 26 in | 1/4 in | 0 in | 25 3/4 in | |
| Shoulder Seam Forward | HPS to seam | false | Full | 1/8 in | 1/2 in | 1/2 in | 0 in | 0 in | 1/2 in | |
| Shoulder Slope | Shoulder point perpendicular to HPS | false | Full | 1/4 in | 1 3/4 in | 1 7/8 in | 1/8 in | 1/4 in | 2 in | Follow Revised |
| Front Neck Drop | HPS to neck seam | false | Full | 1/8 in | 4 in | 4 in | 0 in | 0 in | 4 in | |
| Back Neck Drop | HPS to neck seam | false | Full | 1/8 in | 1 1/4 in | 1 1/4 in | 0 in | 0 in | 1 1/4 in | |
| Back Neck Width | Seam to seam at back neck, at HPS point | false | Full | 1/4 in | 7 3/4 in | 7 5/8 in | -1/8 in | 0 in | 7 3/4 in | |
| Neck Trim Height | Neck Seam to trim edge | false | Full | 1/8 in | 7/8 in | 7/8 in | 0 in | -1/16 in | 13/16 in | Follow Revised |
| Minimum Neck Stretch | | true | Half | 0 in | 11 1/2 in | 0 in | 0 in | 0 in | 11 1/2 in | |
| Across Shoulder | Seam to seam | false | Half | 1/4 in | 18 1/2 in | 18 1/2 in | 0 in | 2 in | 20 1/2 in | Follow Revised |
| Across Front/Across Back Position from HPS | | true | Full | 0 in | 7 in | 7 in | 0 in | 0 in | 7 in | |
| Across Front | Down from HPS, Seam to seam | false | Half | 1/4 in | 17 1/4 in | 17 1/4 in | 0 in | 1 3/4 in | 19 in | Follow Revised |
| Across Back | Down from HPS, Seam to Seam | false | Half | 1/4 in | 17 3/4 in | 17 3/4 in | 0 in | 1 3/4 in | 19 1/2 in | Follow Revised |
| Chest Width | 1" Below armhole- edge to edge | true | Half | 1/4 in | 22 3/4 in | 22 1/2 in | -1/4 in | 0 in | 22 3/4 in | |
| Bottom Opening 2" Above Rib Knit Seam | Straight, Extended (Pattern Measurement) | true | Half | 1/4 in | 21 3/4 in | 21 3/4 in | 0 in | 0 in | 21 3/4 in | |
| Bottom Opening Width- At Seam | Straight with seam relaxed | true | Half | 1/4 in | 19 1/2 in | 19 1/2 in | 0 in | 3/4 in | 20 1/4 in | Follow Revised |
| Bottom Opening Width- At Edge | At bottom edge | true | Half | 1/4 in | 17 in | 17 1/2 in | 1/2 in | 0 in | 17 in | Back to Spec |
| Bottom Hem Height | Bottom edge to stitch line or trim seam | false | Full | 1/8 in | 2 3/4 in | 2 3/4 in | 0 in | 0 in | 2 3/4 in | |
| Sleeve Length from CB Neck | 3-point measure from CB Neck to shoulder point to sleeve edge | true | Full | 1/2 in | 35 in | 34 1/2 in | -1/2 in | 0 in | 35 in | |
| Armhole Drop | Below HPS - measure perpendicular | false | Full | 1/4 in | 12 1/2 in | 12 3/4 in | 1/4 in | 0 in | 12 1/2 in | |
| Bicep Width | 1" below armhole- edge to edge | false | Half | 1/8 in | 9 in | 9 1/4 in | 1/4 in | 1/2 in | 9 1/2 in | Follow Revised |
| Forearm Width | 9" up from sleeve cuff edge | false | Half | 1/8 in | 7 1/8 in | 7 3/8 in | 1/4 in | 1/8 in | 7 1/4 in | Follow Revised |
| Sleeve Opening Width 1" Above Rib Knit Seam | Straight, Extended (Pattern Measurement) | false | Half | 1/8 in | 5 3/8 in | 5 1/4 in | -1/8 in | 0 in | 5 3/8 in | |
| Sleeve Opening Width- At Seam | Width at Seam | false | Half | 1/4 in | 4 3/4 in | 4 3/4 in | 0 in | 0 in | 4 3/4 in | |
| Sleeve Opening Width- At Edge | At edge | false | Half | 1/8 in | 3 3/4 in | 3 3/4 in | 0 in | 0 in | 3 3/4 in | |
| Sleeve Cuff Height | Cuff edge to seam | false | Full | 1/8 in | 2 3/4 in | 2 5/8 in | -1/8 in | 0 in | 2 3/4 in | |
| WL Chest Artwork Placement from HPS to Top Edge | | true | Full | 1/8 in | 7 3/4 in | 7 3/4 in | 0 in | 0 in | 7 3/4 in | |
| WL Artwork Placement Out from CF Line | | false | Full | 1/8 in | 2 1/2 in | 2 1/4 in | -1/4 in | 0 in | 2 1/2 in | Back to Spec |
| CB Artwork Placement below CB Neck Seam | From CB Neck Seam to Top Edge of Artwork | false | Full | 1/8 in | 3 1/2 in | 3 3/8 in | -1/8 in | 0 in | 3 1/2 in | |
| Loop Label Placement at Sideseam | Bottom edge to bottom of loop label, at the WL side seam | false | Full | 1/8 in | 7 in | 7 1/4 in | 1/4 in | 0 in | 7 in | Back To Spec |

PPS - Anastasiya Zolotova

CREATED ON AUG 25, 2025 9:13 PM
PPS: SIZE:M, CREATED AT: 08-25-2025

SS26CS011 ALD Safari Crewneck
FITTING DATE: 8/26/25
MODEL/ATTENDEES: Jessica, Anthony, Jeni, Anastasiya
STATUS: PPS Approved to TOP

Wrong block was used, please follow NOSCS002 Micro Din Crewneck. All measurements updated to reflect.
Sai block, vui lòng làm theo mã NOSCS002 Micro Din Crewneck, tất cả thông số đã được cập nhật

Fit Comments:

- | | |
|---|---|
| 1. Follow revised shoulder slope of 2" | 1. Xuôi vai: Làm theo số đo xuôi vai đã điều chỉnh là 2 inch. |
| 2. Follow revised neck trim height of 13/16" | 2. Chiều cao viền cổ: Làm theo số đo chiều cao viền cổ đã điều chỉnh là 13/16 inch. |
| 3. Follow revised across shoulder of 20 1/2" | 3. Ngang vai: Làm theo số đo ngang vai đã điều chỉnh là 20 1/2 inch. |
| 4. Follow revised across front of 19" | 4. Ngang thân trước: Làm theo số đo ngang thân trước đã điều chỉnh là 19 inch. |
| 5. Follow revised across back of 19 1/2" | 5. Ngang thân sau: Làm theo số đo ngang thân sau đã điều chỉnh là 19 1/2 inch. |
| 6. Follow revised bottom opening at seam of 20 1/4" | 6. Vòng lai (đường may): Làm theo số đo vòng lai tại đường may đã điều chỉnh là 20 1/4 inch. |
| 7. Bottom opening at rib edge came in +1/2", go back to spec. | 7. Vòng lai (mép bo): Số đo vòng lai tại mép bo bị dư 1/2 inch, vui lòng làm lại theo đúng thông số kỹ thuật. |
| 8. Follow revised bicep of 9 1/2" | 8. Vòng bắp tay: Làm theo số đo vòng bắp tay đã điều chỉnh là 9 1/2 inch. |
| 9. Follow revised forearm of 7 1/4" | 9. Vòng cẳng tay: Làm theo số đo vòng cẳng tay đã điều chỉnh là 7 1/4 inch. |
| 10. WL artwork from CF came in -1/4", go back to spec. | 10. Hình in bên trái người mặc: Vị trí hình in bên trái người mặc so với đường giữa thân trước bị thiếu 1/4 inch, vui lòng làm lại theo đúng thông số kỹ thuật. |
| 11. Loop label came in +1/4", go back to spec. | 11. Nhãn Loop: Số đo nhãn Loop bị dư 1/4 inch, vui lòng làm lại theo đúng thông số kỹ thuật. |



Screen Shot 2025-08-27 at 12.16.21 PM.jpg