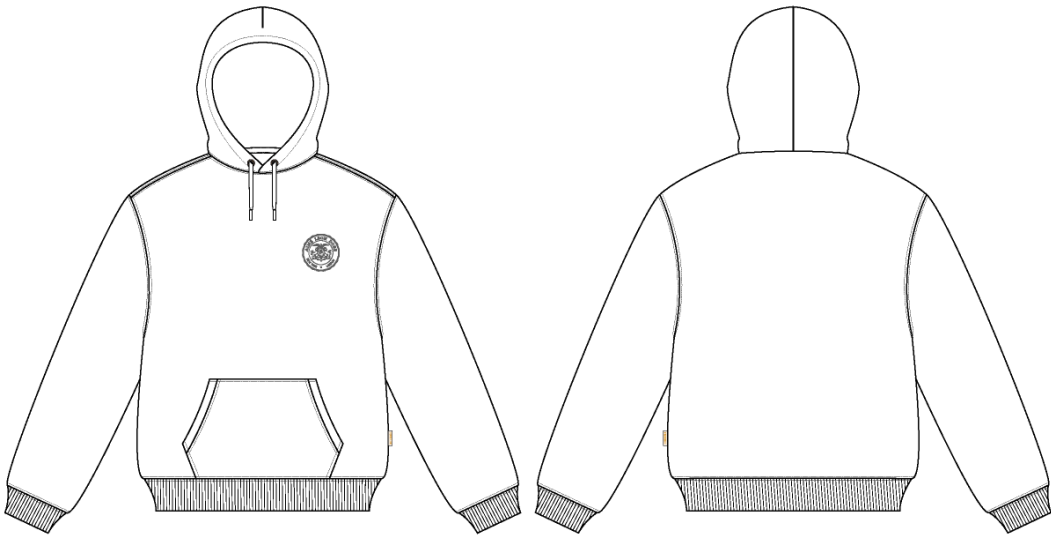


ALD Republic Hoodie

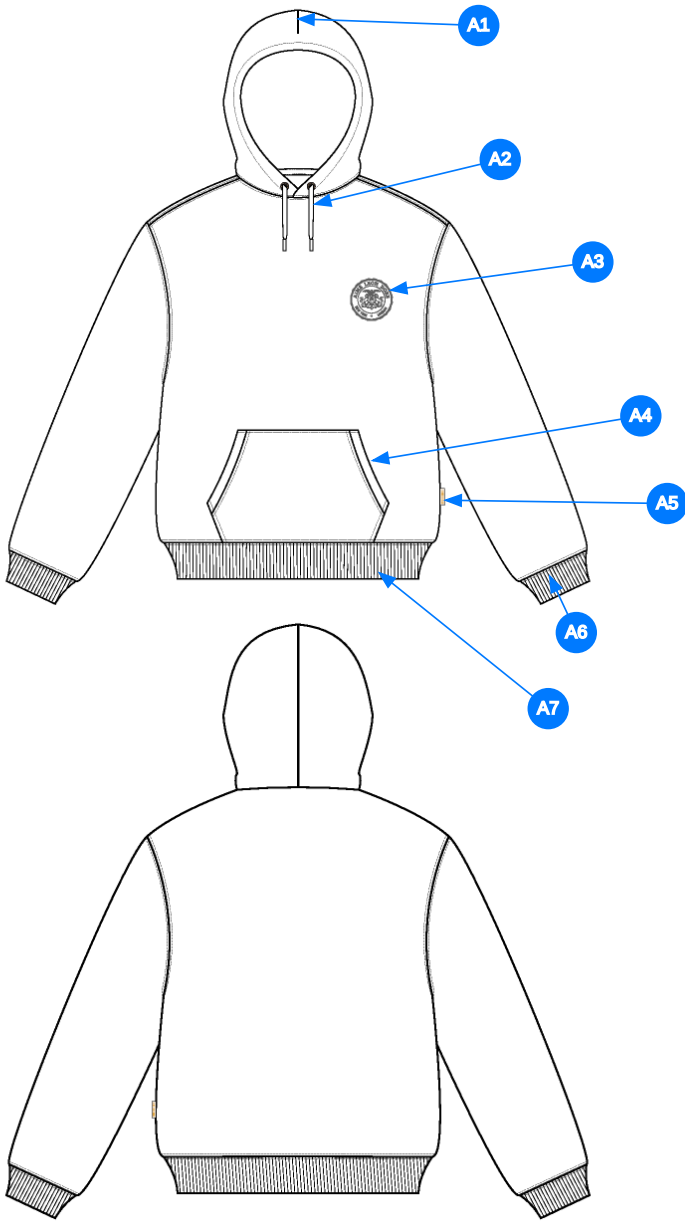
Name	ALD Republic Hoodie
Style No.	SS26CH010
Division	Mens
Category	Hoodies
Season	Spring/Summer
Year	2026
Size Scale	<div>M</div> -Sample size
	<div>XS</div> <div>S</div> <div>M</div> <div>L</div> <div>XL</div> <div>XXL</div>
Style Status	Adopted
Factory	UN-AVAILABLE
Designer Name	Wes
TD Name	Anastasiya
Created by/Author	9/10/2025 Anastasiya Zolotova anastasiya.zolotova@aimeleondore.com



Artboard 1



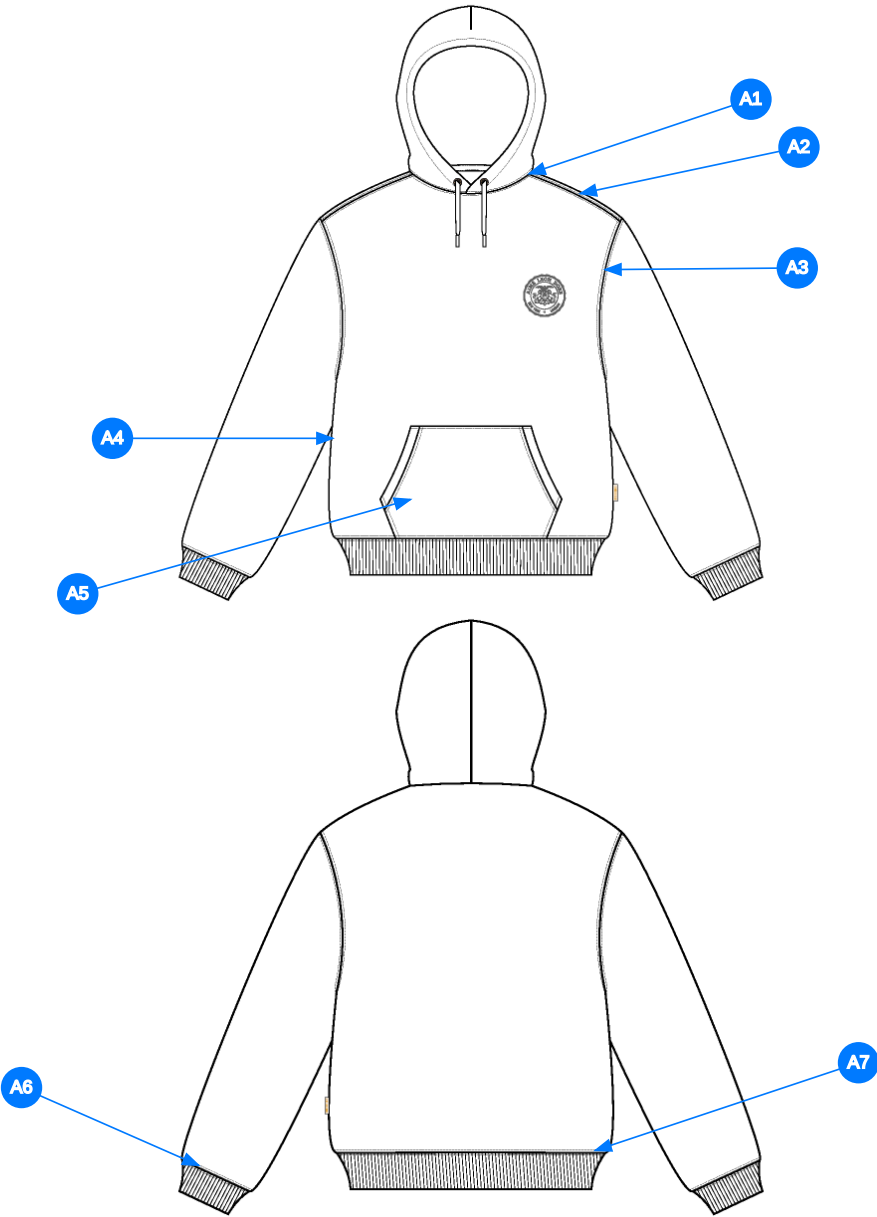
Artboard 1



Artboard 1

Comments (7)

- A1 DART @ HOOD
- A2 THREAD EYELETS W/ DRAWCORD @ HOOD - FLAT BRAIDED DRAWCORDS W/ TURN BACK FINISH
- A3 ARTWORK @ WEARERS' LEFT CHEST - SEE FOLLOWING PAGE FOR ARTWORK DETAILS
- A4 KANGAROO POCKET @ FRONT BODY
- A5 ALD WOVEN LABEL @ SIDE SEAM
- A6 2X2 RIB DOUBLED @ SLEEVE CUFFS
- A7 2X2 RIB DOUBLED @ HEM



Artboard 1

Comments (7)

- A1 STRADDLE STITCH @ NECK
- A2 STRADDLE STITCH @ SHOULDER SEAM
- A3 STRADDLE STITCH @ ARMHOLE
- A4 CLEAN SEAM FINISH @ SIDE SEAM
- A5 1/8" SN TS @ POCKET - APPLIES TO TOP AND BOTTOM EDGES - 1/4" DN TS @ OPENINGS
- A6 STRADDLE STITCH @ SLEEVE CUFF
- A7 STRADDLE STITCH @ BOTTOM HEM

Sample Size: M

POINT OF MEASURE	HOW TO MEASURE	CRITICAL	TYPE	TOLERANCE	XS	S	M	L	XL	XXL
Front Body Length	HPS to bottom edge	true	Full	1/2 in	-7/8 in	-7/8 in	27 in	7/8 in	7/8 in	7/8 in
Back Body Length	CB neck seam to bottom edge	true	Full	1/2 in	-7/8 in	-7/8 in	26 1/4 in	7/8 in	7/8 in	7/8 in
Shoulder Seam Forward	HPS to seam	false	Full	1/8 in	0 in	0 in	1/2 in	0 in	0 in	0 in
Shoulder Slope	Shoulder point perpendicular to HPS	false	Full	1/4 in	0 in	0 in	2 1/2 in	0 in	0 in	0 in
Front Neck Drop	HPS to neck seam	false	Full	1/8 in	0 in	-1/8 in	3 1/2 in	1/8 in	1/8 in	1/8 in
Back Neck Drop	HPS to neck seam	false	Full	1/8 in	0 in	0 in	3/4 in	0 in	0 in	0 in
Back Neck Width	Seam to seam at back neck, at HPS point	false	Full	1/4 in	0 in	-1/4 in	9 in	1/4 in	1/4 in	1/4 in
Minimum Neck Stretch		true	Half	0 in	0 in	0 in	11 1/2 in	0 in	0 in	0 in
Across Shoulder Width- Seam to seam	Seam to Seam	false	Full	1/4 in	-1 in	-1 in	22 1/2 in	1 in	1 1/2 in	1 1/2 in
Across Front/Across Back Position from HPS		true	Full	0 in	-1/4 in	-1/4 in	7 in	1/4 in	1/4 in	1/4 in
Across Front	Down from HPS, Seam to seam	false	Half	1/4 in	-1 in	-1 in	20 1/2 in	1 in	1 1/2 in	1 1/2 in
Across Back	Down from HPS, Seam to Seam	false	Half	1/4 in	-1 in	-1 in	21 in	1 in	1 1/2 in	1 1/2 in
Chest Width	1" Below armhole- edge to edge	true	Half	1/4 in	-1 in	-1 in	22 1/2 in	1 in	1 1/2 in	1 1/2 in
Bottom Opening 2" Above Rib Knit Seam	At bottom edge	true	Half	1/4 in	-1 in	-1 in	20 in	1 in	1 1/2 in	1 1/2 in
Bottom Opening Width- At Seam	Straight with seam relaxed	true	Half	1/4 in	-1 in	-1 in	19 1/2 in	1 in	1 1/2 in	1 1/2 in
Bottom Opening Width- At Edge	At bottom edge	true	Half	1/4 in	-1 in	-1 in	17 1/2 in	1 in	1 1/2 in	1 1/2 in
Bottom Hem Height	Bottom edge to stitch line or trim seam	false	Full	1/8 in	0 in	0 in	2 1/2 in	0 in	0 in	0 in
Sleeve Length from CB Neck	3-point measure from CB Neck to shoulder point to sleeve edge	true	Full	1/2 in	-1 in	-1 in	35 in	1 in	1 in	1 in
Armhole Drop	Below HPS - measure perpendicular	false	Full	1/4 in	-3/8 in	-3/8 in	13 in	3/8 in	1/2 in	1/2 in
Bicep Width	1" below armhole- edge to edge	false	Half	1/4 in	-3/8 in	-3/8 in	10 1/4 in	3/8 in	1/2 in	1/2 in
Forearm Width	9" up from sleeve cuff edge	false	Half	1/4 in	-1/4 in	-1/4 in	7 3/4 in	1/4 in	3/8 in	3/8 in
Sleeve Opening Width 1" Above Rib Knit Seam	At edge	false	Half	1/4 in	-1/4 in	-1/4 in	5 3/8 in	1/4 in	3/8 in	3/8 in
Sleeve Opening Width- At Seam	Width at Seam	false	Half	1/4 in	-1/4 in	-1/4 in	4 3/4 in	1/4 in	3/8 in	3/8 in
Sleeve Opening Width- At Edge	At edge	false	Half	1/4 in	-1/4 in	-1/4 in	3 3/4 in	1/4 in	1/4 in	1/4 in
Sleeve Cuff Height	Cuff edge to seam	false	Full	1/8 in	0 in	0 in	2 1/2 in	0 in	0 in	0 in
Hood Height at CF	From neck seam to top edge	false	Half	3/8 in	0 in	-1/4 in	15 in	0 in	1/4 in	0 in
Hood Height at HPS		false	Full	1/8 in	0 in	-1/4 in	13 1/2 in	0 in	1/4 in	0 in
Hood Width 6" Below Top Edge	Straight from CF edge to CB seam- 6" down	false	Half	3/8 in	0 in	-1/4 in	11 in	1/4 in	1/4 in	1/4 in
Exposed Drawcord Length		false	Full	1/2 in	0 in	0 in	10 in	0 in	0 in	0 in
Hood Tunnel Height		false	Full	1/8 in	0 in	0 in	1 in	0 in	0 in	0 in
Hood Overlap Width at CF Neck		false	Full	1/8 in	0 in	0 in	1 in	0 in	0 in	0 in
Drawcord Opening Placement up from Neck Seam		false	Full	1/8 in	0 in	0 in	1 1/2 in	0 in	0 in	0 in
Kangaroo Pocket Height At Center	Height at center	false	Full	1/4 in	-1/4 in	-1/4 in	8 1/2 in	1/4 in	1/4 in	1/4 in
Kangaroo Pocket Height at Sides		false	Full	1/8 in	-1/8 in	-1/8 in	3 in	1/8 in	1/8 in	1/8 in
Kangaroo Pocket Width at Top Edge	Width at top edge	false	Full	1/4 in	-1/4 in	-1/4 in	9 1/2 in	1/4 in	1/4 in	1/4 in
Kangaroo Pocket Width at Bottom	Width at Bottom Edge - Extended	false	Full	1/4 in	-1/4 in	-1/4 in	12 3/4 in	1/4 in	1/4 in	1/4 in
Kangaroo Pocket Opening		false	Full	1/8 in	-1/4 in	-1/4 in	6 1/4 in	1/4 in	1/4 in	1/4 in
Kangaroo Pocket Hem Height	Edge to stitch line	false	Full	1/8 in	0 in	0 in	3/4 in	0 in	0 in	0 in
WL Chest Artwork Placement from HPS to Top Edge		true	Full	1/8 in	-1/4 in	-1/4 in	7 1/8 in	1/4 in	1/4 in	1/4 in
WL Chest Artwork Placement Out from CF Line		false	Full	1/8 in	-1/8 in	-1/8 in	2 3/8 in	1/8 in	1/8 in	1/8 in

Loop Label Placement at Sideseam	Bottom edge to bottom of loop label, at the WL side seam	false	Full	1/8 in	0 in	0 in	7 in	0 in	0 in	0 in
----------------------------------	--	-------	------	--------	------	------	------	------	------	------

Sample Size: M

POINT OF MEASURE	HOW TO MEASURE	CRITICAL	TYPE	TOLERANCE	XS	S	M	L	XL	XXL
Front Body Length	HPS to bottom edge	true	Full	1/2 in	25 1/4 in	26 1/8 in	27 in	27 7/8 in	28 3/4 in	29 5/8 in
Back Body Length	CB neck seam to bottom edge	true	Full	1/2 in	24 1/2 in	25 3/8 in	26 1/4 in	27 1/8 in	28 in	28 7/8 in
Shoulder Seam Forward	HPS to seam	false	Full	1/8 in	1/2 in	1/2 in	1/2 in	1/2 in	1/2 in	1/2 in
Shoulder Slope	Shoulder point perpendicular to HPS	false	Full	1/4 in	2 1/2 in	2 1/2 in	2 1/2 in	2 1/2 in	2 1/2 in	2 1/2 in
Front Neck Drop	HPS to neck seam	false	Full	1/8 in	3 3/8 in	3 3/8 in	3 1/2 in	3 5/8 in	3 3/4 in	3 7/8 in
Back Neck Drop	HPS to neck seam	false	Full	1/8 in	3/4 in	3/4 in	3/4 in	3/4 in	3/4 in	3/4 in
Back Neck Width	Seam to seam at back neck, at HPS point	false	Full	1/4 in	8 3/4 in	8 3/4 in	9 in	9 1/4 in	9 1/2 in	9 3/4 in
Minimum Neck Stretch		true	Half	0 in	11 1/2 in	11 1/2 in	11 1/2 in	11 1/2 in	11 1/2 in	11 1/2 in
Across Shoulder Width- Seam to seam	Seam to Seam	false	Full	1/4 in	20 1/2 in	21 1/2 in	22 1/2 in	23 1/2 in	25 in	26 1/2 in
Across Front/Across Back Position from HPS		true	Full	0 in	6 1/2 in	6 3/4 in	7 in	7 1/4 in	7 1/2 in	7 3/4 in
Across Front	Down from HPS, Seam to seam	false	Half	1/4 in	18 1/2 in	19 1/2 in	20 1/2 in	21 1/2 in	23 in	24 1/2 in
Across Back	Down from HPS, Seam to Seam	false	Half	1/4 in	19 in	20 in	21 in	22 in	23 1/2 in	25 in
Chest Width	1" Below armhole- edge to edge	true	Half	1/4 in	20 1/2 in	21 1/2 in	22 1/2 in	23 1/2 in	25 in	26 1/2 in
Bottom Opening 2" Above Rib Knit Seam	At bottom edge	true	Half	1/4 in	18 in	19 in	20 in	21 in	22 1/2 in	24 in
Bottom Opening Width- At Seam	Straight with seam relaxed	true	Half	1/4 in	17 1/2 in	18 1/2 in	19 1/2 in	20 1/2 in	22 in	23 1/2 in
Bottom Opening Width- At Edge	At bottom edge	true	Half	1/4 in	15 1/2 in	16 1/2 in	17 1/2 in	18 1/2 in	20 in	21 1/2 in
Bottom Hem Height	Bottom edge to stitch line or trim seam	false	Full	1/8 in	2 1/2 in	2 1/2 in	2 1/2 in	2 1/2 in	2 1/2 in	2 1/2 in
Sleeve Length from CB Neck	3-point measure from CB Neck to shoulder point to sleeve edge	true	Full	1/2 in	33 in	34 in	35 in	36 in	37 in	38 in
Armhole Drop	Below HPS - measure perpendicular	false	Full	1/4 in	12 1/4 in	12 5/8 in	13 in	13 3/8 in	13 7/8 in	14 3/8 in
Bicep Width	1" below armhole- edge to edge	false	Half	1/4 in	9 1/2 in	9 7/8 in	10 1/4 in	10 5/8 in	11 1/8 in	11 5/8 in
Forearm Width	9" up from sleeve cuff edge	false	Half	1/4 in	7 1/4 in	7 1/2 in	7 3/4 in	8 in	8 3/8 in	8 3/4 in
Sleeve Opening Width 1" Above Rib Knit Seam	At edge	false	Half	1/4 in	4 7/8 in	5 1/8 in	5 3/8 in	5 5/8 in	6 in	6 3/8 in
Sleeve Opening Width- At Seam	Width at Seam	false	Half	1/4 in	4 1/4 in	4 1/2 in	4 3/4 in	5 in	5 3/8 in	5 3/4 in
Sleeve Opening Width- At Edge	At edge	false	Half	1/4 in	3 1/4 in	3 1/2 in	3 3/4 in	4 in	4 1/4 in	4 1/2 in
Sleeve Cuff Height	Cuff edge to seam	false	Full	1/8 in	2 1/2 in	2 1/2 in	2 1/2 in	2 1/2 in	2 1/2 in	2 1/2 in
Hood Height at CF	From neck seam to top edge	false	Half	3/8 in	14 3/4 in	14 3/4 in	15 in	15 in	15 1/4 in	15 1/4 in
Hood Height at HPS		false	Full	1/8 in	13 1/4 in	13 1/4 in	13 1/2 in	13 1/2 in	13 3/4 in	13 3/4 in
Hood Width 6" Below Top Edge	Straight from CF edge to CB seam- 6" down	false	Half	3/8 in	10 3/4 in	10 3/4 in	11 in	11 1/4 in	11 1/2 in	11 3/4 in
Exposed Drawcord Length		false	Full	1/2 in	10 in	10 in	10 in	10 in	10 in	10 in
Hood Tunnel Height		false	Full	1/8 in	1 in	1 in	1 in	1 in	1 in	1 in
Hood Overlap Width at CF Neck		false	Full	1/8 in	1 in	1 in	1 in	1 in	1 in	1 in
Drawcord Opening Placement up from Neck Seam		false	Full	1/8 in	1 1/2 in	1 1/2 in	1 1/2 in	1 1/2 in	1 1/2 in	1 1/2 in
Kangaroo Pocket Height At Center	Height at center	false	Full	1/4 in	8 in	8 1/4 in	8 1/2 in	8 3/4 in	9 in	9 1/4 in
Kangaroo Pocket Height at Sides		false	Full	1/8 in	2 3/4 in	2 7/8 in	3 in	3 1/8 in	3 1/4 in	3 3/8 in
Kangaroo Pocket Width at Top Edge	Width at top edge	false	Full	1/4 in	9 in	9 1/4 in	9 1/2 in	9 3/4 in	10 in	10 1/4 in
Kangaroo Pocket Width at Bottom	Width at Bottom Edge - Extended	false	Full	1/4 in	12 1/4 in	12 1/2 in	12 3/4 in	13 in	13 1/4 in	13 1/2 in
Kangaroo Pocket Opening		false	Full	1/8 in	5 3/4 in	6 in	6 1/4 in	6 1/2 in	6 3/4 in	7 in
Kangaroo Pocket Hem Height	Edge to stitch line	false	Full	1/8 in	3/4 in	3/4 in	3/4 in	3/4 in	3/4 in	3/4 in
WL Chest Artwork Placement from HPS to Top Edge		true	Full	1/8 in	6 5/8 in	6 7/8 in	7 1/8 in	7 3/8 in	7 5/8 in	7 7/8 in
WL Chest Artwork Placement Out from CF Line		false	Full	1/8 in	2 1/8 in	2 1/4 in	2 3/8 in	2 1/2 in	2 5/8 in	2 3/4 in

Loop Label Placement at Sideseam	Bottom edge to bottom of loop label, at the WL side seam	false	Full	1/8 in	7 in	7 in	7 in	7 in	7 in	7 in
----------------------------------	--	-------	------	--------	------	------	------	------	------	------

Measured Size: M

POINT OF MEASURE	HOW TO MEASURE	CRITICAL	TYPE	TOLERANCE	EXPECTED	PPS - RCVD	VARIANCE	ADJUST BY +/-	REVISED SPEC	MEASUREMENT NOTES
Front Body Length	HPS to bottom edge	true	Full	1/2 in	27 in	27 in	0 in	0 in	27 in	
Back Body Length	CB neck seam to bottom edge	true	Full	1/2 in	26 1/4 in	26 1/4 in	0 in	0 in	26 1/4 in	
Shoulder Seam Forward	HPS to seam	false	Full	1/8 in	1/2 in	1/4 in	-1/4 in	0 in	1/2 in	go back to spec
Shoulder Slope	Shoulder point perpendicular to HPS	false	Full	1/4 in	2 1/2 in	2 5/8 in	1/8 in	0 in	2 1/2 in	
Front Neck Drop	HPS to neck seam	false	Full	1/8 in	3 1/2 in	3 1/2 in	0 in	0 in	3 1/2 in	
Back Neck Drop	HPS to neck seam	false	Full	1/8 in	3/4 in	1 in	1/4 in	0 in	3/4 in	go back to spec
Back Neck Width	Seam to seam at back neck, at HPS point	false	Full	1/4 in	9 in	9 1/4 in	1/4 in	0 in	9 in	
Minimum Neck Stretch		true	Half	0 in	11 1/2 in	11 1/2 in	0 in	0 in	11 1/2 in	
Across Shoulder Width- Seam to seam	Seam to Seam	false	Full	1/4 in	22 1/2 in	22 5/8 in	1/8 in	0 in	22 1/2 in	
Across Front/Across Back Position from HPS		true	Full	0 in	7 in	7 in	0 in	0 in	7 in	
Across Front	Down from HPS, Seam to seam	false	Half	1/4 in	20 1/2 in	20 5/8 in	1/8 in	0 in	20 1/2 in	
Across Back	Down from HPS, Seam to Seam	false	Half	1/4 in	21 in	21 in	0 in	0 in	21 in	
Chest Width	1" Below armhole- edge to edge	true	Half	1/4 in	22 1/2 in	22 3/4 in	1/4 in	0 in	22 1/2 in	
Bottom Opening 2" Above Rib Knit Seam	At bottom edge	true	Half	1/4 in	20 in	20 1/2 in	1/2 in	0 in	20 in	go back to spec
Bottom Opening Width- At Seam	Straight with seam relaxed	true	Half	1/4 in	19 1/2 in	19 3/4 in	1/4 in	0 in	19 1/2 in	
Bottom Opening Width- At Edge	At bottom edge	true	Half	1/4 in	17 1/2 in	17 3/4 in	1/4 in	0 in	17 1/2 in	
Bottom Hem Height	Bottom edge to stitch line or trim seam	false	Full	1/8 in	2 1/2 in	2 1/2 in	0 in	0 in	2 1/2 in	
Sleeve Length from CB Neck	3-point measure from CB Neck to shoulder point to sleeve edge	true	Full	1/2 in	35 in	34 5/8 in	-3/8 in	0 in	35 in	
Armhole Drop	Below HPS - measure perpendicular	false	Full	1/4 in	13 in	13 in	0 in	0 in	13 in	
Bicep Width	1" below armhole- edge to edge	false	Half	1/4 in	10 1/4 in	10 1/2 in	1/4 in	0 in	10 1/4 in	
Forearm Width	9" up from sleeve cuff edge	false	Half	1/4 in	7 1/2 in	7 1/2 in	0 in	1/4 in	7 3/4 in	Follow Revised
Sleeve Opening Width 1" Above Rib Knit Seam	At edge	false	Half	1/4 in	5 1/4 in	5 3/8 in	1/8 in	1/8 in	5 3/8 in	Follow Revised
Sleeve Opening Width- At Seam	Width at Seam	false	Half	1/4 in	4 3/4 in	4 3/4 in	0 in	0 in	4 3/4 in	
Sleeve Opening Width- At Edge	At edge	false	Half	1/4 in	3 3/4 in	3 3/4 in	0 in	0 in	3 3/4 in	
Sleeve Cuff Height	Cuff edge to seam	false	Full	1/8 in	2 1/2 in	2 1/2 in	0 in	0 in	2 1/2 in	
Hood Height at CF	From neck seam to top edge	false	Half	3/8 in	15 in	15 1/4 in	1/4 in	0 in	15 in	
Hood Height at HPS		false	Full	1/8 in	13 1/2 in	13 1/2 in	0 in	0 in	13 1/2 in	
Hood Width 6" Below Top Edge	Straight from CF edge to CB seam- 6" down	false	Half	3/8 in	11 in	10 3/4 in	-1/4 in	0 in	11 in	
Exposed Drawcord Length		false	Full	1/2 in	10 in	0 in	0 in	0 in	10 in	Missing
Hood Tunnel Height		false	Full	1/8 in	1 in	1 in	0 in	0 in	1 in	
Hood Overlap Width at CF Neck		false	Full	1/8 in	1 in	1 in	0 in	0 in	1 in	
Drawcord Opening Placement up from Neck Seam		false	Full	1/8 in	1 1/2 in	1 1/4 in	-1/4 in	0 in	1 1/2 in	go back to spec
Kangaroo Pocket Height At Center	Height at center	false	Full	1/4 in	8 1/2 in	8 1/2 in	0 in	0 in	8 1/2 in	
Kangaroo Pocket Height at Sides		false	Full	1/8 in	3 in	3 in	0 in	0 in	3 in	
Kangaroo Pocket Width at Top Edge	Width at top edge	false	Full	1/4 in	9 1/2 in	9 5/8 in	1/8 in	0 in	9 1/2 in	

Kangaroo Pocket Width at Bottom	Width at Bottom Edge - Extended	false	Full	1/4 in	12 3/4 in	12 7/8 in	1/8 in	0 in	12 3/4 in	
Kangaroo Pocket Opening		false	Full	1/8 in	6 1/4 in	6 1/4 in	0 in	0 in	6 1/4 in	
Kangaroo Pocket Hem Height	Edge to stitch line	false	Full	1/8 in	3/4 in	3/4 in	0 in	0 in	3/4 in	
WL Chest Artwork Placement from HPS to Top Edge		true	Full	1/8 in	7 3/4 in	7 3/8 in	-3/8 in	-5/8 in	7 1/8 in	follow revised
WL Chest Artwork Placement Out from CF Line		false	Full	1/8 in	2 3/4 in	2 5/8 in	-1/8 in	-3/8 in	2 3/8 in	follow revised
Loop Label Placement at Sideseam	Bottom edge to bottom of loop label, at the WL side seam	false	Full	1/8 in	7 in	7 in	0 in	0 in	7 in	

PPS - Sarah Tota

CREATED ON SEP 9, 2025 8:21 PM

PPS: SIZE:M, CREATED AT: 09-09-2025

SS26CH010 ALD Republic Hoodie

FITTING DATE: 09/09/2024**MODEL/ATTENDEES:** Jessica, Cal, Anthony, Jeni, Anastasiya, Sarah, Hyeyoung, Wes**STATUS:** PPS Approved to TOP**Fit Comments:**

1. Shoulder seam forward came in -1/4", go back to spec
2. Back neck drop came in +1/4", go back to spec
3. Bottom opening 2" above rib knit seam came in +1/2", go back to spec
4. Increase forearm to 7 3/4", pattern measures 7 5/8" -see image (same correction as SS26CH017)
5. Increase sleeve opening 1" above rib knit to 5 3/8"-see image (same correction as SS26CH017)
6. Drawcord opening placement up from neck seam came in -1/4", go back to spec
7. Follow revised measurement for WL chest artwork placement from HPS of 7 1/8"
8. Follow revised measurement for WL chest artwork placement out from CF of 2 3/8"

Construction/Workmanship:

1. Fty added a bar tack at hood dart finish , we normally dont add this on any of our hoodies. Is this a fty suggestion, is there some risk to not bartacking. Team would prefer no additional bar tack here.

Bỏ bỏ ở nón

1. Đường may vai phía trước bị hụt 1/4 inch, vui lòng điều chỉnh lại đúng với thông số kỹ thuật ban đầu.
2. Hạ cổ sau bị dư 1/4 inch, vui lòng điều chỉnh lại đúng với thông số kỹ thuật ban đầu.
3. rộng gấu áo (đo cách đường may bo gấu 2 inch) bị rộng hơn 1/2 inch, điều chỉnh lại đúng với thông số kỹ thuật ban đầu.
4. Tăng kích thước cẳng tay lên 7 3/4 inch, hiện tại rập chỉ đo được 7 5/8 inch (xem hình) (chỉnh sửa tương tự như mã SS26CH017 - C0012-HOD225).
5. Tăng độ rộng của tay áo lên 5 3/8 inch (đo cách bo tay 1 inch) (xem hình) (chỉnh sửa tương tự như mã SS26CH017).
6. Vị trí đặt lỗ dây luồn (đo từ đường may cổ) bị thấp hơn 1/4 inch, điều chỉnh lại đúng với thông số kỹ thuật ban đầu.
7. Tuân thủ số đo đã sửa đổi cho vị trí hình thêu ở ngực, khoảng cách từ đỉnh vai là 7 1/8 inch.
8. Tuân thủ số đo đã sửa đổi cho vị trí đặt hình thêu ở ngực, khoảng cách từ đường tâm thân trước là 2 3/8 inch.



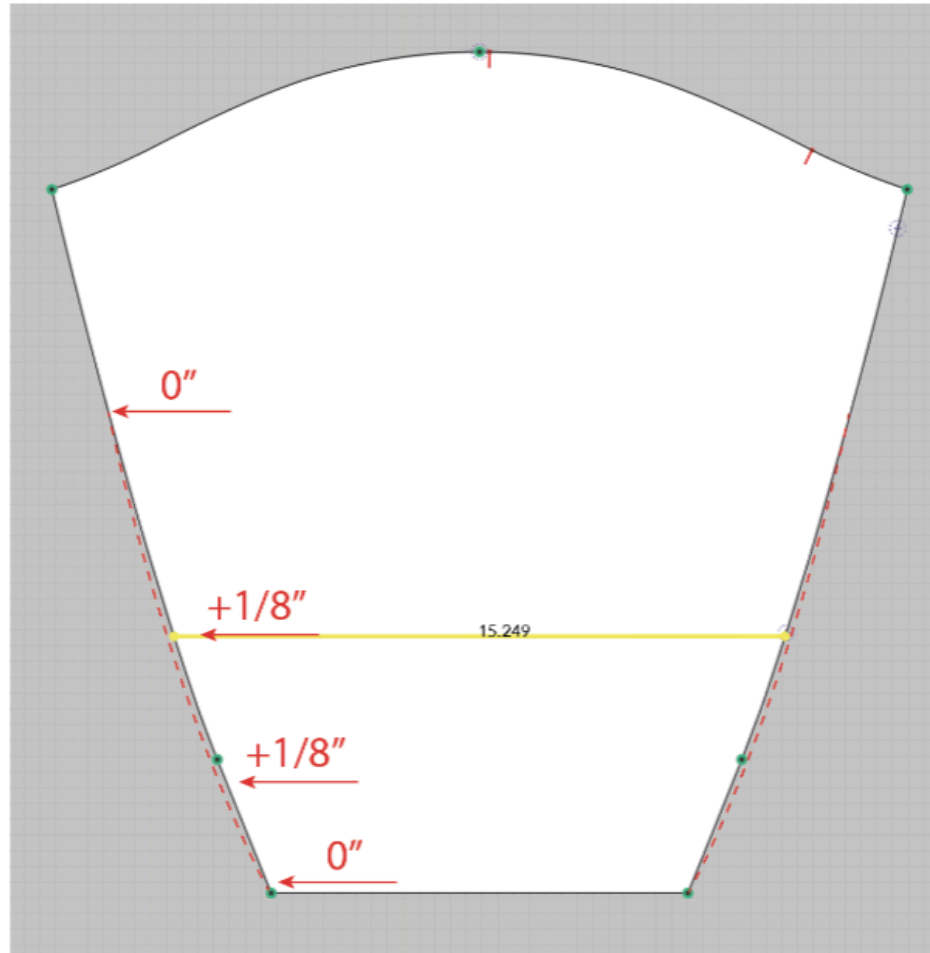
Untitled-80-0.jpg

Tăng kích thước cẳng tay lên $7 \frac{3}{4}$ inch, hiện tại rập chỉ đo được $7 \frac{5}{8}$ inch (xem hình)
(chỉnh sửa tương tự như mã SS26CH017 - C0012-HOD225).

5. Tăng độ rộng của tay áo lên $5 \frac{3}{8}$ inch (đo cách bo tay 1 inch); chỉnh sửa tương tự như mã
SS26CH017).

SS26CH017 Queens Crest Hoodie

- Increase forearm to $7 \frac{3}{4}$ ", pattern measures $7 \frac{5}{8}$ "
- Increase sleeve opening 1" above rib knit to $5 \frac{3}{8}$ "



Screen Shot 2025-09-10 at 4.07.12 PM.jpg

Bỏ bỏ nón

SS26CH010 ALD Republic Hoodie

Fty added a bar tack at hood dart finish , we normally dont add this on any of our hoodies.

Is this a fty suggestion, is there some risk to not bartacking? Team would prefer no additional bar tack here.



Screen Shot 2025-09-10 at 4.14.40 PM.jpg