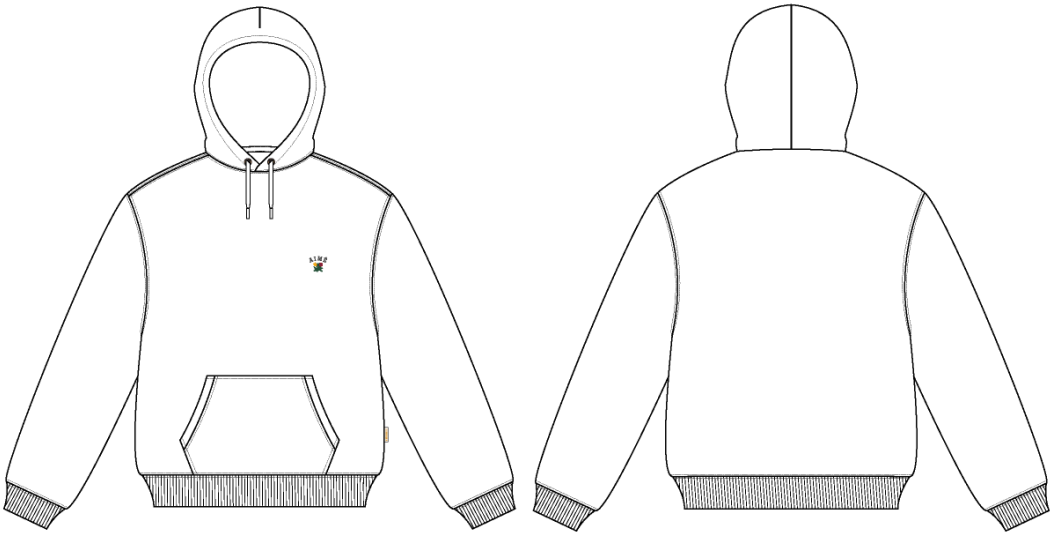


Name	Queens Crest Hoodie
Style No.	SS26CH017
Division	Mens
Category	Hoodies
Season	Spring/Summer
Year	2026
Size Scale	<div>M -Sample size</div> <div><div>XS</div><div>S</div><div>M</div><div>L</div><div>XL</div><div>XXL</div></div>
Style Status	Adopted
Factory	UN-AVAILABLE
Designer Name	Wes
TD Name	Anastasiya
Created by/Author	9/8/2025 Anastasiya Zolotova anastasiya.zolotova@aimeleondore.com

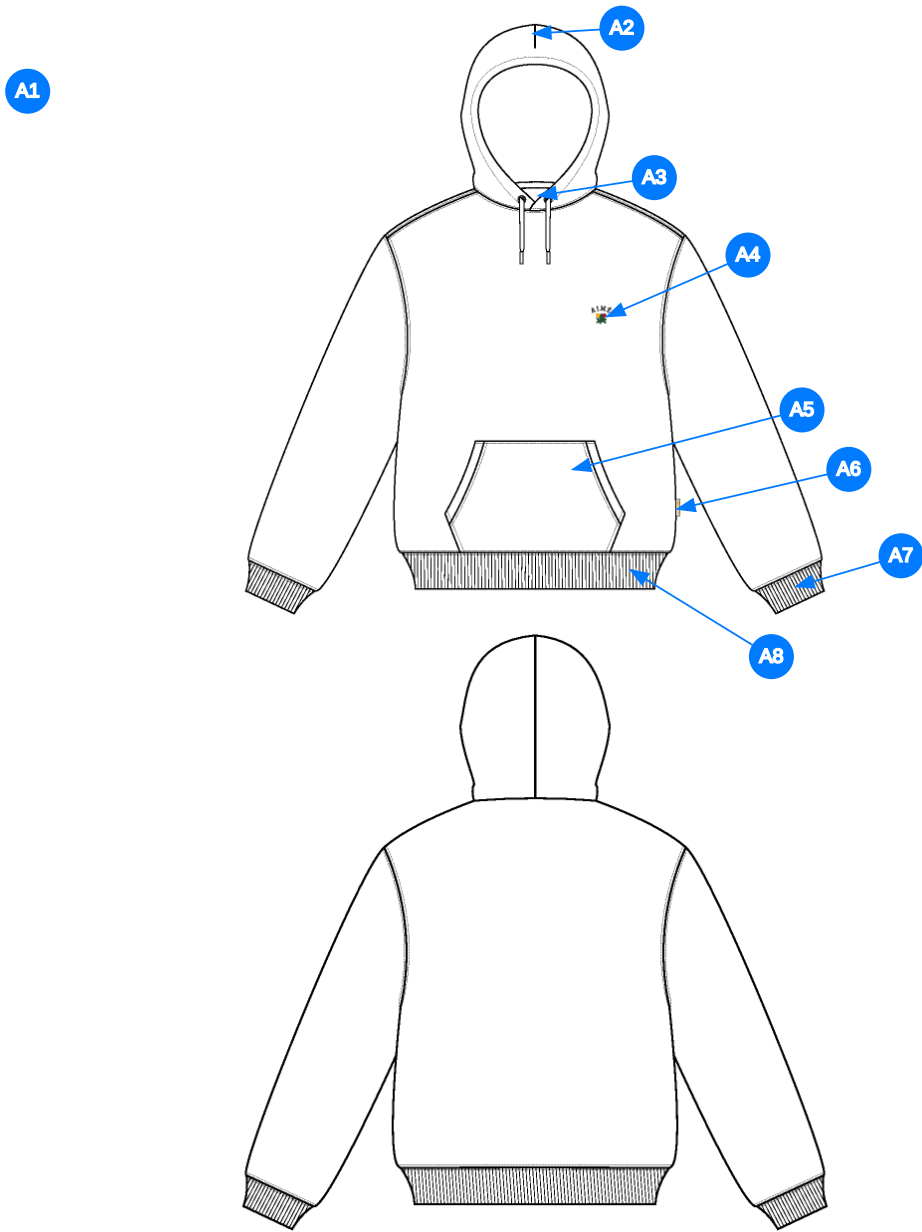
Queens Crest Hoodie



1_B&W-1



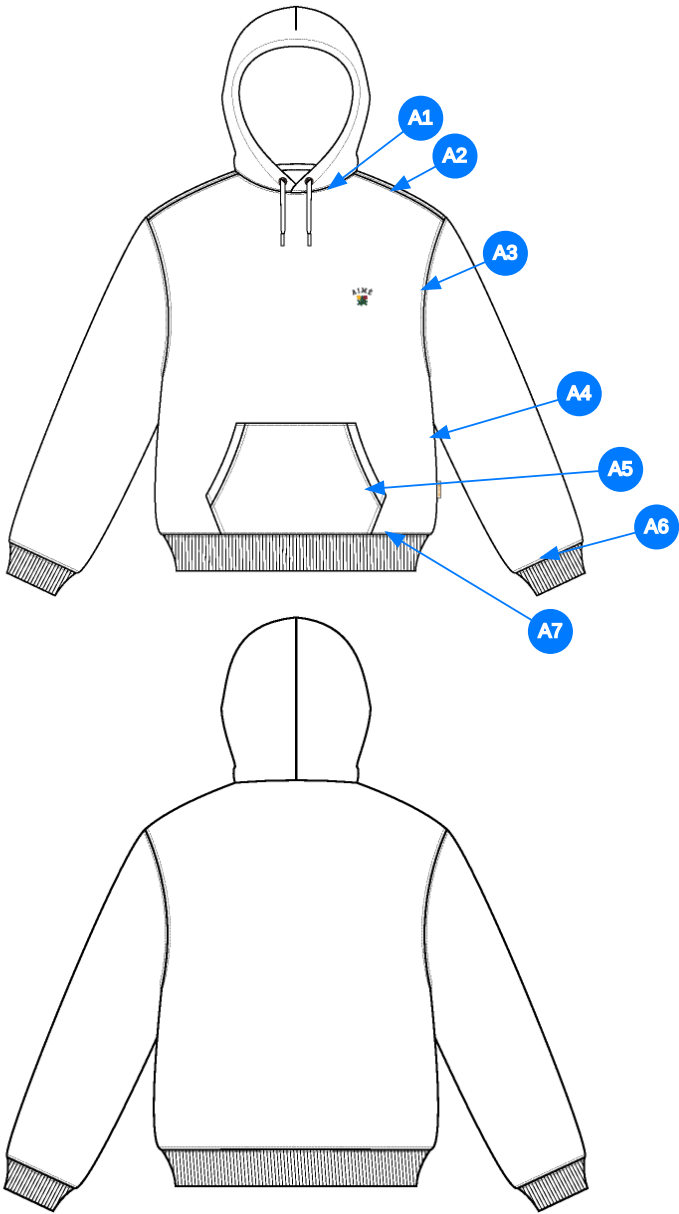
2_CLR-1



Comments (7)

- A1** FIT: REGULAR FIT HOODIE
- A2** DART @ HOOD
- A3** THREAD EYELETS W/ DRAWCORD @ HOOD - ROUND BRAIDED DRAWCORDS W/ KNOT AND FRAYED ENDS
- A4** ARTWORK @ WL CHEST - SEE ADDITIONAL FILE FOR ARTWORK DETAILS
- A5** KANGAROO POCKET @ FRONT BODY
- A6** ALD WOVEN LABEL @ SIDE SEAM
- A7** 2X2 RIB DOUBLED @ SLEEVE CUFF

3_Construction Details-1



Comments (7)

- A1 STRADDLE STITCH @ NECK
- A2 STRADDLE STITCH @ SHOULDER SEAM
- A3 STRADDLE STITCH @ ARMHOLE
- A4 CLEAN SEAM @ SIDE SEAM
- A5 1/8" SN TS @ POCKET - APPLIES TO TOP AND BOTTOM EDGES - 1/4" DN TS @ OPENINGS
- A6 STRADDLE STITCH @ SLEEVE CUFF
- A7 STRADDLE STITCH @ BOTTOM HEM

4_Stitching Details-1

Sample Size: M

POINT OF MEASURE	HOW TO MEASURE	CRITICAL	TYPE	TOLERANCE	XS	S	M	L	XL	XXL
Front Body Length	HPS to bottom edge	true	Full	1/2 in	-7/8 in	-7/8 in	27 in	7/8 in	7/8 in	7/8 in
Back Body Length	CB neck seam to bottom edge	true	Full	1/2 in	-7/8 in	-7/8 in	26 1/4 in	7/8 in	7/8 in	7/8 in
Shoulder Seam Forward	HPS to seam	false	Full	1/8 in	0 in	0 in	1/2 in	0 in	0 in	0 in
Shoulder Slope	Shoulder point perpendicular to HPS	false	Full	1/4 in	0 in	0 in	2 1/2 in	0 in	0 in	0 in
Front Neck Drop	HPS to neck seam	false	Full	1/8 in	0 in	-1/8 in	3 1/2 in	1/8 in	1/8 in	1/8 in
Back Neck Drop	HPS to neck seam	false	Full	1/8 in	0 in	0 in	3/4 in	0 in	0 in	0 in
Back Neck Width	Seam to seam at back neck, at HPS point	false	Full	1/4 in	0 in	-1/4 in	9 in	1/4 in	1/4 in	1/4 in
Minimum Neck Stretch		true	Half	0 in	0 in	0 in	11 1/2 in	0 in	0 in	0 in
Across Shoulder Width- Seam to seam	Seam to Seam	false	Full	1/4 in	-1 in	-1 in	22 1/2 in	1 in	1 1/2 in	1 1/2 in
Across Front/Across Back Position from HPS		true	Full	0 in	-1/4 in	-1/4 in	7 in	1/4 in	1/4 in	1/4 in
Across Front	Down from HPS, Seam to seam	false	Half	1/4 in	-1 in	-1 in	20 1/2 in	1 in	1 1/2 in	1 1/2 in
Across Back	Down from HPS, Seam to Seam	false	Half	1/4 in	-1 in	-1 in	21 in	1 in	1 1/2 in	1 1/2 in
Chest Width	1" Below armhole- edge to edge	true	Half	1/4 in	-1 in	-1 in	22 1/2 in	1 in	1 1/2 in	1 1/2 in
Bottom Opening 2" Above Rib Knit Seam	At bottom edge	true	Half	1/4 in	-1 in	-1 in	20 in	1 in	1 1/2 in	1 1/2 in
Bottom Opening Width- At Seam	Straight with seam relaxed	true	Half	1/4 in	-1 in	-1 in	19 1/2 in	1 in	1 1/2 in	1 1/2 in
Bottom Opening Width- At Edge	At bottom edge	true	Half	1/4 in	-1 in	-1 in	17 1/2 in	1 in	1 1/2 in	1 1/2 in
Bottom Hem Height	Bottom edge to stitch line or trim seam	false	Full	1/8 in	0 in	0 in	2 1/2 in	0 in	0 in	0 in
Sleeve Length from CB Neck	3-point measure from CB Neck to shoulder point to sleeve edge	true	Full	1/2 in	-1 in	-1 in	35 in	1 in	1 in	1 in
Armhole Drop	Below HPS - measure perpendicular	false	Full	1/4 in	-3/8 in	-3/8 in	13 in	3/8 in	1/2 in	1/2 in
Bicep Width	1" below armhole- edge to edge	false	Half	1/4 in	-3/8 in	-3/8 in	10 1/4 in	3/8 in	1/2 in	1/2 in
Forearm Width	9" up from sleeve cuff edge	false	Half	1/4 in	-1/4 in	-1/4 in	7 3/4 in	1/4 in	3/8 in	3/8 in
Sleeve Opening Width 1" Above Rib Knit Seam	At edge	false	Half	1/4 in	-1/4 in	-1/4 in	5 3/8 in	1/4 in	3/8 in	3/8 in
Sleeve Opening Width- At Seam	Width at Seam	false	Half	1/4 in	-1/4 in	-1/4 in	4 3/4 in	1/4 in	3/8 in	3/8 in
Sleeve Opening Width- At Edge	At edge	false	Half	1/4 in	-1/4 in	-1/4 in	3 3/4 in	1/4 in	1/4 in	1/4 in
Sleeve Cuff Height	Cuff edge to seam	false	Full	1/8 in	0 in	0 in	2 1/2 in	0 in	0 in	0 in
Hood Height at CF	From neck seam to top edge	false	Half	3/8 in	0 in	-1/4 in	15 in	0 in	1/4 in	0 in
Hood Height at HPS		false	Full	1/8 in	0 in	-1/4 in	13 1/2 in	0 in	1/4 in	0 in
Hood Width 6" Below Top Edge	Straight from CF edge to CB seam- 6" down	false	Half	3/8 in	0 in	-1/4 in	11 in	1/4 in	1/4 in	1/4 in
Exposed Drawcord Length		false	Full	1/2 in	0 in	0 in	10 in	0 in	0 in	0 in
Hood Tunnel Height		false	Full	1/8 in	0 in	0 in	1 in	0 in	0 in	0 in
Hood Overlap Width at CF Neck		false	Full	1/8 in	0 in	0 in	1 in	0 in	0 in	0 in
Drawcord Opening Placement up from Neck Seam		false	Full	1/8 in	0 in	0 in	1 1/2 in	0 in	0 in	0 in
Kangaroo Pocket Height At Center	Height at center	false	Full	1/4 in	-1/4 in	-1/4 in	8 1/2 in	1/4 in	1/4 in	1/4 in
Kangaroo Pocket Height at Sides		false	Full	1/8 in	-1/8 in	-1/8 in	3 in	1/8 in	1/8 in	1/8 in
Kangaroo Pocket Width at Top Edge	Width at top edge	false	Full	1/4 in	-1/4 in	-1/4 in	9 1/2 in	1/4 in	1/4 in	1/4 in
Kangaroo Pocket Width at Bottom	Width at Bottom Edge - Extended	false	Full	1/4 in	-1/4 in	-1/4 in	12 3/4 in	1/4 in	1/4 in	1/4 in
Kangaroo Pocket Opening		false	Full	1/8 in	-1/4 in	-1/4 in	6 1/4 in	1/4 in	1/4 in	1/4 in
Kangaroo Pocket Hem Height	Edge to stitch line	false	Full	1/8 in	0 in	0 in	3/4 in	0 in	0 in	0 in
WL Chest Artwork Placement from HPS to Top Edge		true	Full	1/8 in	-1/4 in	-1/4 in	7 3/4 in	1/4 in	1/4 in	1/4 in
WL Chest Artwork Placement Out from CF Line		false	Full	1/8 in	-1/8 in	-1/8 in	3 1/8 in	1/8 in	1/8 in	1/8 in

Loop Label Placement at Sideseam	Bottom edge to bottom of loop label, at the WL side seam	false	Full	1/8 in	0 in	0 in	7 in	0 in	0 in	0 in
----------------------------------	--	-------	------	--------	------	------	------	------	------	------

Sample Size: M

POINT OF MEASURE	HOW TO MEASURE	CRITICAL	TYPE	TOLERANCE	XS	S	M	L	XL	XXL
Front Body Length	HPS to bottom edge	true	Full	1/2 in	25 1/4 in	26 1/8 in	27 in	27 7/8 in	28 3/4 in	29 5/8 in
Back Body Length	CB neck seam to bottom edge	true	Full	1/2 in	24 1/2 in	25 3/8 in	26 1/4 in	27 1/8 in	28 in	28 7/8 in
Shoulder Seam Forward	HPS to seam	false	Full	1/8 in	1/2 in	1/2 in	1/2 in	1/2 in	1/2 in	1/2 in
Shoulder Slope	Shoulder point perpendicular to HPS	false	Full	1/4 in	2 1/2 in	2 1/2 in	2 1/2 in	2 1/2 in	2 1/2 in	2 1/2 in
Front Neck Drop	HPS to neck seam	false	Full	1/8 in	3 3/8 in	3 3/8 in	3 1/2 in	3 5/8 in	3 3/4 in	3 7/8 in
Back Neck Drop	HPS to neck seam	false	Full	1/8 in	3/4 in	3/4 in	3/4 in	3/4 in	3/4 in	3/4 in
Back Neck Width	Seam to seam at back neck, at HPS point	false	Full	1/4 in	8 3/4 in	8 3/4 in	9 in	9 1/4 in	9 1/2 in	9 3/4 in
Minimum Neck Stretch		true	Half	0 in	11 1/2 in	11 1/2 in	11 1/2 in	11 1/2 in	11 1/2 in	11 1/2 in
Across Shoulder Width- Seam to seam	Seam to Seam	false	Full	1/4 in	20 1/2 in	21 1/2 in	22 1/2 in	23 1/2 in	25 in	26 1/2 in
Across Front/Across Back Position from HPS		true	Full	0 in	6 1/2 in	6 3/4 in	7 in	7 1/4 in	7 1/2 in	7 3/4 in
Across Front	Down from HPS, Seam to seam	false	Half	1/4 in	18 1/2 in	19 1/2 in	20 1/2 in	21 1/2 in	23 in	24 1/2 in
Across Back	Down from HPS, Seam to Seam	false	Half	1/4 in	19 in	20 in	21 in	22 in	23 1/2 in	25 in
Chest Width	1" Below armhole- edge to edge	true	Half	1/4 in	20 1/2 in	21 1/2 in	22 1/2 in	23 1/2 in	25 in	26 1/2 in
Bottom Opening 2" Above Rib Knit Seam	At bottom edge	true	Half	1/4 in	18 in	19 in	20 in	21 in	22 1/2 in	24 in
Bottom Opening Width- At Seam	Straight with seam relaxed	true	Half	1/4 in	17 1/2 in	18 1/2 in	19 1/2 in	20 1/2 in	22 in	23 1/2 in
Bottom Opening Width- At Edge	At bottom edge	true	Half	1/4 in	15 1/2 in	16 1/2 in	17 1/2 in	18 1/2 in	20 in	21 1/2 in
Bottom Hem Height	Bottom edge to stitch line or trim seam	false	Full	1/8 in	2 1/2 in	2 1/2 in	2 1/2 in	2 1/2 in	2 1/2 in	2 1/2 in
Sleeve Length from CB Neck	3-point measure from CB Neck to shoulder point to sleeve edge	true	Full	1/2 in	33 in	34 in	35 in	36 in	37 in	38 in
Armhole Drop	Below HPS - measure perpendicular	false	Full	1/4 in	12 1/4 in	12 5/8 in	13 in	13 3/8 in	13 7/8 in	14 3/8 in
Bicep Width	1" below armhole- edge to edge	false	Half	1/4 in	9 1/2 in	9 7/8 in	10 1/4 in	10 5/8 in	11 1/8 in	11 5/8 in
Forearm Width	9" up from sleeve cuff edge	false	Half	1/4 in	7 1/4 in	7 1/2 in	7 3/4 in	8 in	8 3/8 in	8 3/4 in
Sleeve Opening Width 1" Above Rib Knit Seam	At edge	false	Half	1/4 in	4 7/8 in	5 1/8 in	5 3/8 in	5 5/8 in	6 in	6 3/8 in
Sleeve Opening Width- At Seam	Width at Seam	false	Half	1/4 in	4 1/4 in	4 1/2 in	4 3/4 in	5 in	5 3/8 in	5 3/4 in
Sleeve Opening Width- At Edge	At edge	false	Half	1/4 in	3 1/4 in	3 1/2 in	3 3/4 in	4 in	4 1/4 in	4 1/2 in
Sleeve Cuff Height	Cuff edge to seam	false	Full	1/8 in	2 1/2 in	2 1/2 in	2 1/2 in	2 1/2 in	2 1/2 in	2 1/2 in
Hood Height at CF	From neck seam to top edge	false	Half	3/8 in	14 3/4 in	14 3/4 in	15 in	15 in	15 1/4 in	15 1/4 in
Hood Height at HPS		false	Full	1/8 in	13 1/4 in	13 1/4 in	13 1/2 in	13 1/2 in	13 3/4 in	13 3/4 in
Hood Width 6" Below Top Edge	Straight from CF edge to CB seam- 6" down	false	Half	3/8 in	10 3/4 in	10 3/4 in	11 in	11 1/4 in	11 1/2 in	11 3/4 in
Exposed Drawcord Length		false	Full	1/2 in	10 in	10 in	10 in	10 in	10 in	10 in
Hood Tunnel Height		false	Full	1/8 in	1 in	1 in	1 in	1 in	1 in	1 in
Hood Overlap Width at CF Neck		false	Full	1/8 in	1 in	1 in	1 in	1 in	1 in	1 in
Drawcord Opening Placement up from Neck Seam		false	Full	1/8 in	1 1/2 in	1 1/2 in	1 1/2 in	1 1/2 in	1 1/2 in	1 1/2 in
Kangaroo Pocket Height At Center	Height at center	false	Full	1/4 in	8 in	8 1/4 in	8 1/2 in	8 3/4 in	9 in	9 1/4 in
Kangaroo Pocket Height at Sides		false	Full	1/8 in	2 3/4 in	2 7/8 in	3 in	3 1/8 in	3 1/4 in	3 3/8 in
Kangaroo Pocket Width at Top Edge	Width at top edge	false	Full	1/4 in	9 in	9 1/4 in	9 1/2 in	9 3/4 in	10 in	10 1/4 in
Kangaroo Pocket Width at Bottom	Width at Bottom Edge - Extended	false	Full	1/4 in	12 1/4 in	12 1/2 in	12 3/4 in	13 in	13 1/4 in	13 1/2 in
Kangaroo Pocket Opening		false	Full	1/8 in	5 3/4 in	6 in	6 1/4 in	6 1/2 in	6 3/4 in	7 in
Kangaroo Pocket Hem Height	Edge to stitch line	false	Full	1/8 in	3/4 in	3/4 in	3/4 in	3/4 in	3/4 in	3/4 in
WL Chest Artwork Placement from HPS to Top Edge		true	Full	1/8 in	7 1/4 in	7 1/2 in	7 3/4 in	8 in	8 1/4 in	8 1/2 in
WL Chest Artwork Placement Out from CF Line		false	Full	1/8 in	2 7/8 in	3 in	3 1/8 in	3 1/4 in	3 3/8 in	3 1/2 in

Loop Label Placement at Sideseam	Bottom edge to bottom of loop label, at the WL side seam	false	Full	1/8 in	7 in	7 in	7 in	7 in	7 in	7 in
----------------------------------	--	-------	------	--------	------	------	------	------	------	------

Measured Size: M

POINT OF MEASURE	HOW TO MEASURE	CRITICAL	TYPE	TOLERANCE	EXPECTED	PPS - RCVD	VARIANCE	ADJUST BY +/-	REVISED SPEC	MEASUREMENT NOTES
Front Body Length	HPS to bottom edge	true	Full	1/2 in	27 in	27 3/8 in	3/8 in	0 in	27 in	
Back Body Length	CB neck seam to bottom edge	true	Full	1/2 in	26 1/4 in	26 3/8 in	1/8 in	0 in	26 1/4 in	
Shoulder Seam Forward	HPS to seam	false	Full	1/8 in	1/2 in	1/4 in	-1/4 in	0 in	1/2 in	Back to Spec
Shoulder Slope	Shoulder point perpendicular to HPS	false	Full	1/4 in	2 1/2 in	2 3/8 in	-1/8 in	0 in	2 1/2 in	
Front Neck Drop	HPS to neck seam	false	Full	1/8 in	3 1/2 in	3 1/2 in	0 in	0 in	3 1/2 in	
Back Neck Drop	HPS to neck seam	false	Full	1/8 in	3/4 in	3/4 in	0 in	0 in	3/4 in	
Back Neck Width	Seam to seam at back neck, at HPS point	false	Full	1/4 in	9 in	9 1/4 in	1/4 in	0 in	9 in	
Minimum Neck Stretch		true	Half	0 in	11 1/2 in	11 1/2 in	0 in	0 in	11 1/2 in	
Across Shoulder Width- Seam to seam	Seam to Seam	false	Full	1/4 in	22 1/2 in	22 1/2 in	0 in	0 in	22 1/2 in	
Across Front/Across Back Position from HPS		true	Full	0 in	7 in	7 in	0 in	0 in	7 in	
Across Front	Down from HPS, Seam to seam	false	Half	1/4 in	20 1/2 in	20 1/2 in	0 in	0 in	20 1/2 in	
Across Back	Down from HPS, Seam to Seam	false	Half	1/4 in	21 in	21 in	0 in	0 in	21 in	
Chest Width	1" Below armhole- edge to edge	true	Half	1/4 in	22 1/2 in	22 1/2 in	0 in	0 in	22 1/2 in	
Bottom Opening 2" Above Rib Knit Seam	At bottom edge	true	Half	1/4 in	20 in	20 1/4 in	1/4 in	0 in	20 in	
Bottom Opening Width- At Seam	Straight with seam relaxed	true	Half	1/4 in	19 1/2 in	19 1/4 in	-1/4 in	0 in	19 1/2 in	
Bottom Opening Width- At Edge	At bottom edge	true	Half	1/4 in	17 1/2 in	17 1/2 in	0 in	0 in	17 1/2 in	
Bottom Hem Height	Bottom edge to stitch line or trim seam	false	Full	1/8 in	2 1/2 in	2 5/8 in	1/8 in	0 in	2 1/2 in	
Sleeve Length from CB Neck	3-point measure from CB Neck to shoulder point to sleeve edge	true	Full	1/2 in	35 in	34 3/4 in	-1/4 in	0 in	35 in	
Armhole Drop	Below HPS - measure perpendicular	false	Full	1/4 in	13 in	13 in	0 in	0 in	13 in	
Bicep Width	1" below armhole- edge to edge	false	Half	1/4 in	10 1/4 in	10 3/8 in	1/8 in	0 in	10 1/4 in	
Forearm Width	9" up from sleeve cuff edge	false	Half	1/4 in	7 1/2 in	7 3/8 in	-1/8 in	1/4 in	7 3/4 in	Increase
Sleeve Opening Width 1" Above Rib Knit Seam	At edge	false	Half	1/4 in	5 1/4 in	5 1/4 in	0 in	1/8 in	5 3/8 in	Increase
Sleeve Opening Width- At Seam	Width at Seam	false	Half	1/4 in	4 3/4 in	4 3/4 in	0 in	0 in	4 3/4 in	
Sleeve Opening Width- At Edge	At edge	false	Half	1/4 in	3 3/4 in	3 1/2 in	-1/4 in	0 in	3 3/4 in	
Sleeve Cuff Height	Cuff edge to seam	false	Full	1/8 in	2 1/2 in	2 3/4 in	1/4 in	0 in	2 1/2 in	Back to Spec
Hood Height at CF	From neck seam to top edge	false	Half	3/8 in	15 in	15 in	0 in	0 in	15 in	
Hood Height at HPS		false	Full	1/8 in	13 1/2 in	13 1/2 in	0 in	0 in	13 1/2 in	
Hood Width 6" Below Top Edge	Straight from CF edge to CB seam- 6" down	false	Half	3/8 in	11 in	11 in	0 in	0 in	11 in	
Exposed Drawcord Length		false	Full	1/2 in	10 in	0 in	0 in	0 in	10 in	
Hood Tunnel Height		false	Full	1/8 in	1 in	1 in	0 in	0 in	1 in	
Hood Overlap Width at CF Neck		false	Full	1/8 in	1 in	1 in	0 in	0 in	1 in	
Drawcord Opening Placement up from Neck Seam		false	Full	1/8 in	1 1/2 in	1 1/2 in	0 in	0 in	1 1/2 in	
Kangaroo Pocket Height At Center	Height at center	false	Full	1/4 in	8 1/2 in	8 5/8 in	1/8 in	0 in	8 1/2 in	
Kangaroo Pocket Height at Sides		false	Full	1/8 in	3 in	3 in	0 in	0 in	3 in	
Kangaroo Pocket Width at Top Edge	Width at top edge	false	Full	1/4 in	9 1/2 in	9 1/2 in	0 in	0 in	9 1/2 in	

Kangaroo Pocket Width at Bottom	Width at Bottom Edge - Extended	false	Full	1/4 in	12 3/4 in	12 1/2 in	-1/4 in	0 in	12 3/4 in	
Kangaroo Pocket Opening		false	Full	1/8 in	6 1/4 in	6 1/4 in	0 in	0 in	6 1/4 in	
Kangaroo Pocket Hem Height	Edge to stitch line	false	Full	1/8 in	3/4 in	3/4 in	0 in	0 in	3/4 in	
WL Chest Artwork Placement from HPS to Top Edge		true	Full	1/8 in	7 1/2 in	7 1/2 in	0 in	1/4 in	7 3/4 in	Follow Revised
WL Chest Artwork Placement Out from CF Line		false	Full	1/8 in	3 in	3 1/8 in	1/8 in	1/8 in	3 1/8 in	Keep As Sample
Loop Label Placement at Sideseam	Bottom edge to bottom of loop label, at the WL side seam	false	Full	1/8 in	7 in	7 1/4 in	1/4 in	0 in	7 in	Back to Spec

PPS - Anastasiya Zolotova

CREATED ON SEP 8, 2025 4:15 PM

PPS: SIZE:M, CREATED AT: 09-02-2025

SS26CH017 Queens Crest Hoodie

FITTING DATE: 9/4/25**MODEL/ATTENDEES:** Jessica, Cal, Anthony, Megan, Jeni, Anastasiya, Hyeyoung, Sarah**STATUS:** PPS Approved to TOP**Fit Comments:**

1. Shoulder seam forward came in -1/4", go back to spec.
2. Increase forearm to 7 3/4", pattern measures 7 5/8" -see image
3. Increase sleeve opening 1" above rib knit to 5 3/8"-see image
4. Sleeve cuff height came in +1/4", go back to spec.
5. Follow revised artwork placement from HPS to top edge of artwork to be 7 3/4"
6. Keep artwork placement from CF at 3 1/8"
7. Ensure loop label is within tolerance for production.

Construction/Workmanship:

1. Neck stitching is very wavy, please see image and improve workmanship.
2. Missing drawcords, please ensure to bar tack drawcords at hood top edge.

1. Đường may vai phía trước bị hụt 1/4 inch, vui lòng điều chỉnh lại đúng với thông số kỹ thuật ban đầu.
2. Tăng kích thước cẳng tay lên 7 3/4 inch, hiện tại rập chỉ đo được 7 5/8 inch (xem hình).
3. Tăng độ rộng của tay áo lên 5 3/8 inch (đo cách bo tay 1 inch) (xem hình).
4. Chiều cao bo tay bị dư 1/4 inch, vui lòng điều chỉnh lại đúng với thông số kỹ thuật ban đầu.
5. Tuân thủ vị trí đặt họa tiết đã chỉnh sửa, khoảng cách từ đỉnh vai đến mép trên của họa tiết là 7 3/4 inch.
6. Giữ nguyên vị trí đặt họa tiết cách đường tâm thân trước 3 1/8 inch.
7. Đảm bảo nhãn sườn nằm trong giới hạn dung sai cho sản xuất.

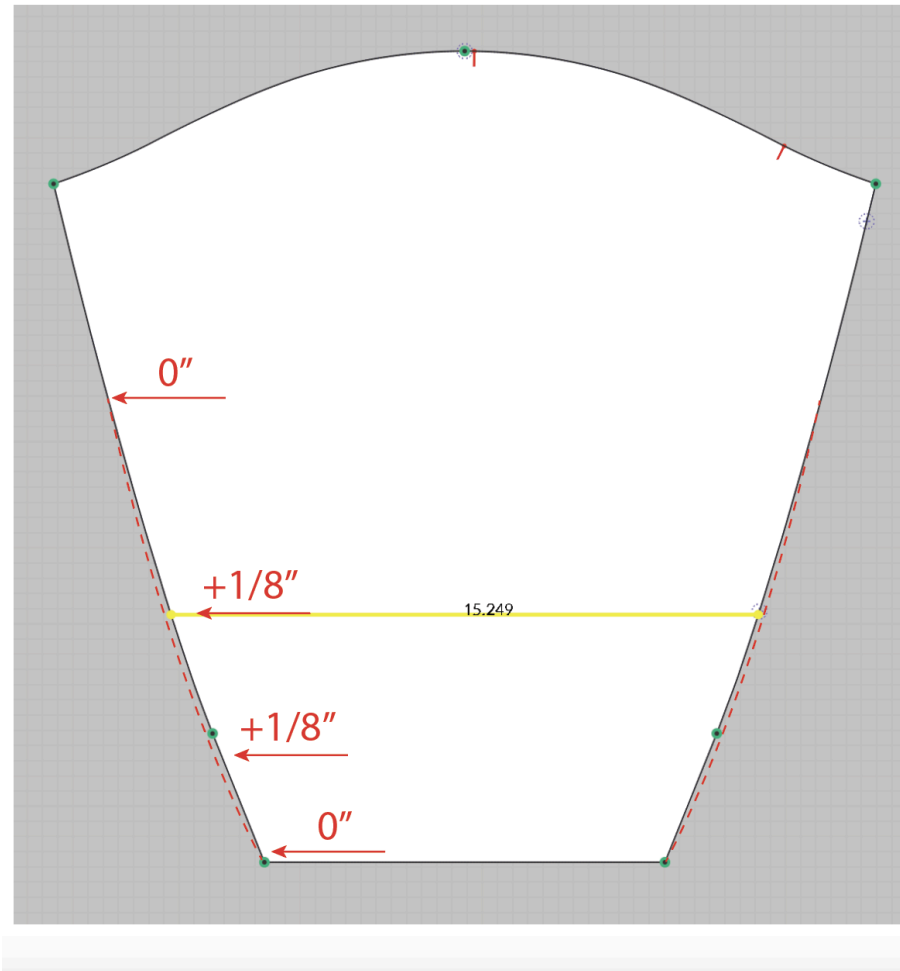
1. Đường may cổ rất lượn sóng, vui lòng xem hình và cải thiện tay nghề.
2. Thiếu dây luồn, vui lòng đảm bảo cố định dây rút bằng đường may chặn ở mép trên của mũ.



Screen Shot 2025-09-05 at 8.43.56 AM.jpg

- Tăng kích thước cẳng tay lên 7 3/4 inch, hiện tại rập chỉ đo được 7 5/8 inch
 - Tăng độ rộng cửa tay áo lên 5 3/8 inch (đo cách bo tay 1 inch)
- SS26CH017 Queens Crest Hoodie

-Increase forearm to 7 3/4", pattern measures 7 5/8"
-Increase sleeve opening 1" above rib knit to 5 3/8"



Screen Shot 2025-09-08 at 12.50.48 PM.jpg

SS26CH017 Queens Crest Hoodie

Đường may cổ rất lượn sóng, vui lòng xem hình và cải thiện tay nghề.

Neck stitching is very wavy, please see image and improve workmanship.



Screen Shot 2025-09-08 at 2.02.55 PM.jpg