

Queens Crest Sweatpant

Name	Queens Crest Sweatpant
Style No.	SS26CP002
Division	Mens
Category	Sweatpants
Season	Spring/Summer
Year	2026
Size Scale	<b>M</b> -Sample size
	<div>XS S M L XL XXL</div>
Style Status	Adopted
Factory	UN-AVAILABLE
Designer Name	Wes
TD Name	Anastasiya
Created by/Author	9/8/2025 Anastasiya Zolotova anastasiya.zolotova@aimeleondore.com



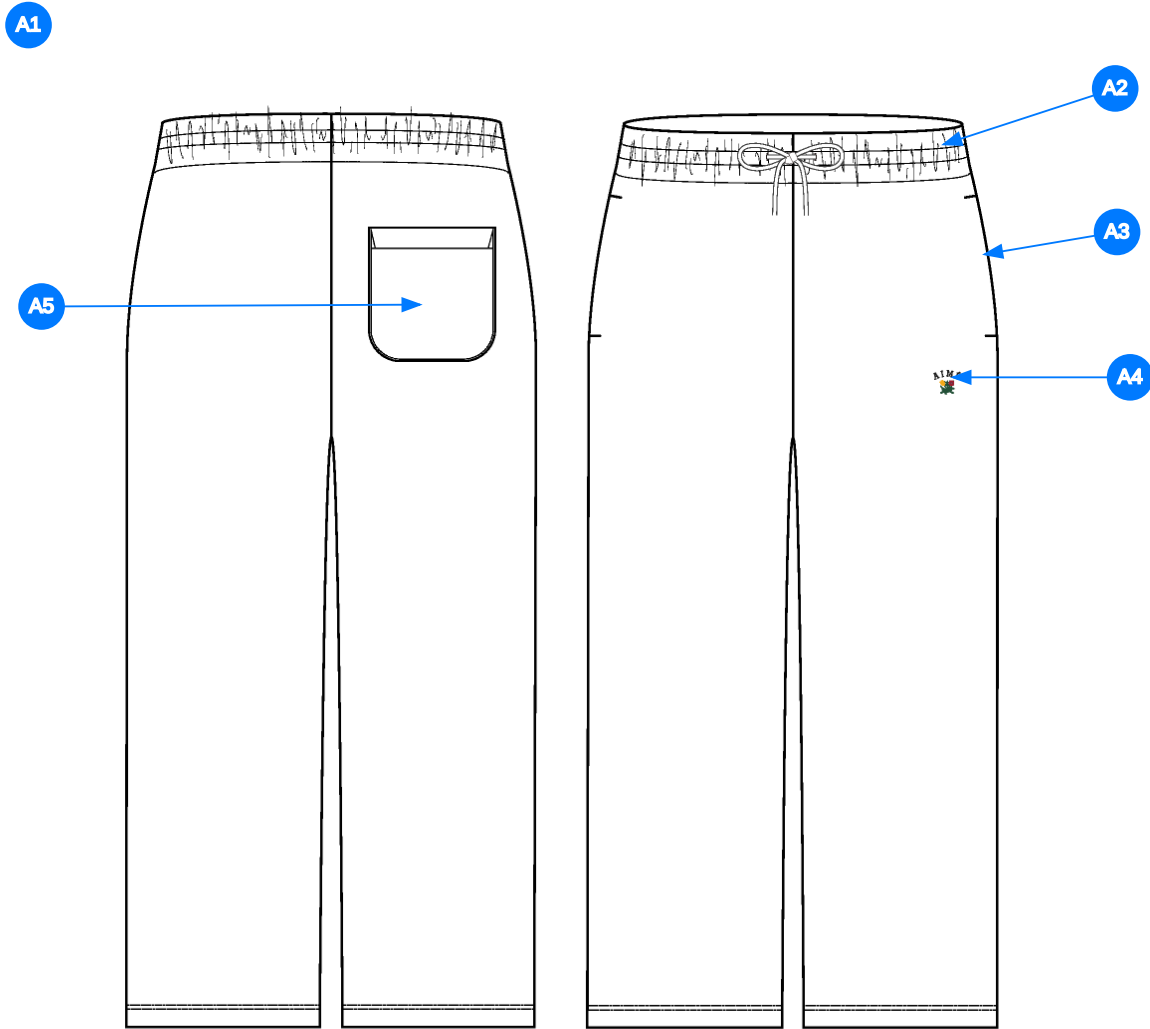
1\_B&W-1



PINE GROVE

NAVY BLAZER

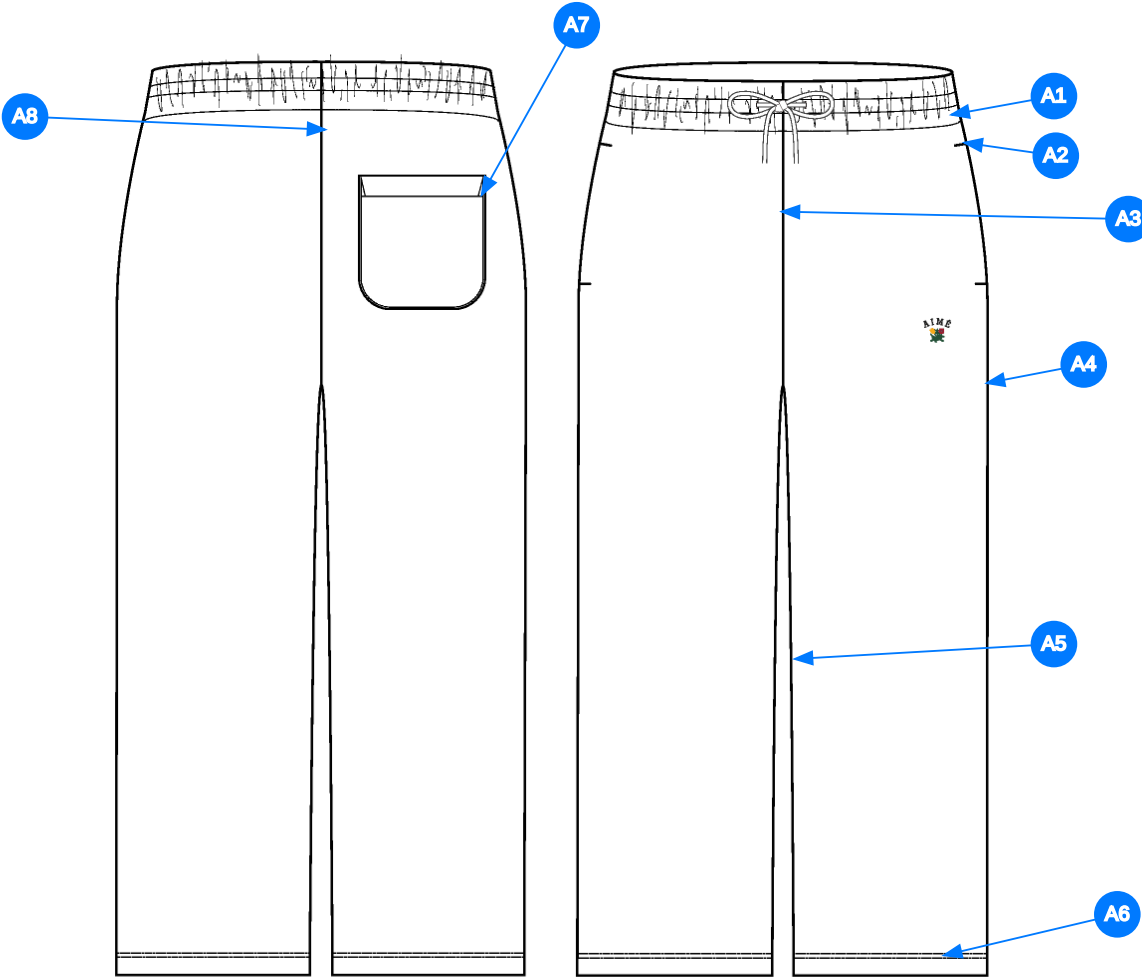
2\_CLR-1



Comments (5)

- A1 FIT: UNISPHERE SWEATPANT
- A2 GROWN ON ELASTICATED WAISTBAND W/ EXTERIOR  
DRAWCORDS - ROUND BRAIDED DRAWCORDS -  
KNOTTED FINISH W/ FRAYED ENDS
- A3 ON SEAM POCKETS @ SIDE SEAM - USE COTTON  
JERSEY FOR KNUCKLE SIDE - USE SELF FABRIC FOR  
PALM SIDE
- A4 ARTWORK @ WL LEG - SEE SEPARATE FILE FOR  
ARTWORK DETAILS
- A5 SELF FABRIC PATCH POCKET

3\_Construction Details-1



Comments (8)

- A1 1/4" DN TS @ WAISTBAND
- A2 SN EDGESTITCH @ POCKETS - BAR TACK @ TOP & BOTTOM
- A3 CLEAN SEAM FINISH @ FRONT RISE
- A4 CLEAN SEAM FINISH @ SIDE SEAM
- A5 CLEAN SEAM FINISH @ INSEAM
- A6 1/4 " DN TS @ BOTTOM HEM
- A7 EDGE STITCH @ PATCH POCKET
- A8 CLEAN SEAM FINISH @ BACK RISE SEAM

4\_Stitching Details-1

Sample Size: M

POINT OF MEASURE	HOW TO MEASURE	CRITICAL	TYPE	TOLERANCE	XS	S	M	L	XL	XXL
Waistband Height	Waist seam to top edge	false	Full	1/8 in	0 in	0 in	2 in	0 in	0 in	0 in
Waist Width Relaxed	Straight at top edge- garment relaxed	true	Half	1/2 in	-1 in	-1 in	15 3/8 in	1 in	1 in	1 in
Waist Width Extended	Straight, with waist or elastic stretched	true	Half	1/2 in	-1 in	-1 in	21 in	1 in	1 in	1 in
Distance Between Drawcord Exit		false	Full	1/8 in	0 in	0 in	1 1/2 in	0 in	0 in	0 in
Exposed Drawcord Length		false	Full	1/2 in	0 in	0 in	10 in	0 in	0 in	0 in
Front Rise	Crotch seam to waistband top edge	true	Half	3/8 in	-1/2 in	-1/2 in	13 1/4 in	1/2 in	1/2 in	1/2 in
Back Rise	Crotch seam to waistband top edge	true	Half	3/8 in	-1/2 in	-1/2 in	17 in	1/2 in	1/2 in	1/2 in
Low Hip Position Below Waistband Top Edge		true	Full	0 in	-1/4 in	-1/4 in	8 in	1/4 in	1/4 in	1/4 in
Low Hip Width	3-pt measurement taken 8" down from waistband top edge	true	Half	1/2 in	-1 in	-1 in	21 1/2 in	1 in	1 in	1 in
Thigh Width	1" below crotch point	false	Half	3/8 in	-5/8 in	-5/8 in	0 in	5/8 in	5/8 in	5/8 in
Knee Width	12" down from the crotch point	false	Half	3/8 in	-3/8 in	-3/8 in	11 1/2 in	3/8 in	3/8 in	3/8 in
Calf Width	Measured 18" down from Crotch point	false	Half	1/4 in	-3/8 in	-3/8 in	10 3/4 in	3/8 in	3/8 in	3/8 in
Leg Opening width at edge		false	Half	1/4 in	-1/4 in	-1/4 in	10 in	1/4 in	1/4 in	1/4 in
Inseam Length	Crotch point to leg opening, along seam	true	Full	1/2 in	0 in	0 in	29 1/2 in	0 in	1 in	0 in
Bottom Hem Height	Bottom edge to stitch line or trim seam	false	Full	1/8 in	0 in	0 in	1 in	0 in	0 in	0 in
Front Pocket Placement Below Waistband	Waistband seam to top of pocket	false	Full	1/4 in	0 in	0 in	3/4 in	0 in	0 in	0 in
Front Pocket Opening Length	Along opening edge	false	Full	1/4 in	0 in	-1/4 in	6 1/4 in	0 in	1/4 in	0 in
Pocket Bag Height	Top edge to bottom edge of pocket bag inside	false	Full	1/8 in	0 in	-1/4 in	11 1/2 in	0 in	1/4 in	0 in
Pocket Bag Width		false	Full	1/8 in	0 in	-1/4 in	7 in	0 in	1/4 in	0 in
WR Back Pocket Placement Below Waistband Seam Outer Corner	Waistband seam to top of pocket	false	Full	1/4 in	0 in	-1/4 in	2 1/4 in	0 in	1/4 in	0 in
WR Back Pocket Placement Below Waistband Seam Inner Corner		true	Full	1/8 in	0 in	-1/4 in	2 3/8 in	0 in	1/4 in	0 in
WR Back Pocket Placement from CB Rise	Inside edge of pocket to CB rise seam	false	Full	1/4 in	0 in	-1/8 in	2 1/4 in	0 in	1/8 in	0 in
WR Back Pocket Hem Height	Edge to stitch line	false	Full	1/8 in	0 in	0 in	3/4 in	0 in	0 in	0 in
WR Back Pocket Width	Width of pocket at widest	false	Full	1/4 in	0 in	-1/4 in	5 3/4 in	0 in	1/4 in	0 in
WR Back Pocket Height	Top edge to bottom edge	false	Full	1/4 in	0 in	-1/4 in	6 1/4 in	0 in	1/4 in	0 in
WL Front Artwork Placement Below Pocket Edge		true	Full	1/8 in	0 in	0 in	2 in	0 in	0 in	0 in
WL Front Artwork Forward From Outseam		true	Full	1/8 in	0 in	0 in	1 1/2 in	0 in	0 in	0 in

Measured Size: M

POINT OF MEASURE	HOW TO MEASURE	CRITICAL	TYPE	TOLERANCE	EXPECTED	PPS - RCVD	VARIANCE	ADJUST BY +/-	REVISED SPEC	MEASUREMENT NOTES
Waistband Height	Waist seam to top edge	false	Full	1/8 in	2 in	2 in	0 in	0 in	2 in	
Waist Width Relaxed	Straight at top edge-garment relaxed	true	Half	1/2 in	15 3/8 in	15 3/4 in	3/8 in	0 in	15 3/8 in	
Waist Width Extended	Straight, with waist or elastic stretched	true	Half	1/2 in	21 in	21 in	0 in	0 in	21 in	
Distance Between Drawcord Exit		false	Full	1/8 in	1 1/2 in	1 1/2 in	0 in	0 in	1 1/2 in	
Exposed Drawcord Length		false	Full	1/2 in	10 in	0 in	0 in	0 in	10 in	Missing
Front Rise	Crotch seam to waistband top edge	true	Half	3/8 in	13 1/4 in	13 1/2 in	1/4 in	0 in	13 1/4 in	
Back Rise	Crotch seam to waistband top edge	true	Half	3/8 in	16 1/2 in	16 3/4 in	1/4 in	1/2 in	17 in	Increase
Low Hip Position Below Waistband Top Edge		true	Full	0 in	8 in	8 in	0 in	0 in	8 in	
Low Hip Width	3-pt measurement taken 8" down from waistband top edge	true	Half	1/2 in	21 1/2 in	21 1/2 in	0 in	0 in	21 1/2 in	
Thigh Width	1" below crotch point	false	Half	3/8 in	13 1/4 in	13 1/4 in	0 in	-13 1/4 in	0 in	Fty to Advise
Knee Width	12" down from the crotch point	false	Half	3/8 in	11 1/2 in	11 3/8 in	-1/8 in	0 in	11 1/2 in	
Calf Width	Measured 18" down from Crotch point	false	Half	1/4 in	10 3/4 in	10 3/4 in	0 in	0 in	10 3/4 in	
Leg Opening width at edge		false	Half	1/4 in	10 in	9 3/4 in	-1/4 in	0 in	10 in	
Inseam Length	Crotch point to leg opening, along seam	true	Full	1/2 in	29 1/2 in	29 5/8 in	1/8 in	0 in	29 1/2 in	
Bottom Hem Height	Bottom edge to stitch line or trim seam	false	Full	1/8 in	1 in	1 in	0 in	0 in	1 in	
Front Pocket Placement Below Waistband	Waistband seam to top of pocket	false	Full	1/4 in	3/4 in	7/8 in	1/8 in	0 in	3/4 in	
Front Pocket Opening Length	Along opening edge	false	Full	1/4 in	6 1/4 in	6 1/4 in	0 in	0 in	6 1/4 in	
Pocket Bag Height	Top edge to bottom edge of pocket bag inside	false	Full	1/8 in	11 1/2 in	11 3/8 in	-1/8 in	0 in	11 1/2 in	
Pocket Bag Width		false	Full	1/8 in	7 in	7 in	0 in	0 in	7 in	
WR Back Pocket Placement Below Waistband Seam Outer Corner	Waistband seam to top of pocket	false	Full	1/4 in	2 1/4 in	2 3/8 in	1/8 in	0 in	2 1/4 in	
WR Back Pocket Placement Below Waistband Seam Inner Corner		true	Full	1/8 in	2 3/8 in	2 1/4 in	-1/8 in	0 in	2 3/8 in	
WR Back Pocket Placement from CB Rise	Inside edge of pocket to CB rise seam	false	Full	1/4 in	2 1/4 in	2 1/4 in	0 in	0 in	2 1/4 in	
WR Back Pocket Hem Height	Edge to stitch line	false	Full	1/8 in	3/4 in	3/4 in	0 in	0 in	3/4 in	
WR Back Pocket Width	Width of pocket at widest	false	Full	1/4 in	5 3/4 in	5 3/4 in	0 in	0 in	5 3/4 in	
WR Back Pocket Height	Top edge to bottom edge	false	Full	1/4 in	6 1/4 in	6 1/8 in	-1/8 in	0 in	6 1/4 in	
WL Front Artwork Placement Below Pocket Edge		true	Full	1/8 in	2 in	2 in	0 in	0 in	2 in	
WL Front Artwork Forward From Outseam		true	Full	1/8 in	1 1/2 in	1 1/2 in	0 in	0 in	1 1/2 in	

PPS - Anastasiya Zolotova

CREATED ON SEP 8, 2025 4:18 PM  
PPS: SIZE:M, CREATED AT: 09-02-2025

SS26CP002 Queens Crest Sweatpant

FITTING DATE: 9/4/25

MODEL/ATTENDEES: Jessica, Cal, Anthony, Megan, Jeni, Anastasiya, Hyeyoung, Sarah

STATUS: PPS Approved to TOP (Please send revised pattern prior to cutting)

Fit Comments:

- 1. Increase front rise angle 3/8" to 0" at low hip. Add back to outseam to keep waist the same.
- 2. Increase back rise angle 1/4" to 0" as pictured. Add back to outseam to keep waist + hip the same.
- 3. Increase back rise to 17".
- 4. Fty to advise revised thigh measurement due to above correction.
- 5. Scoop out front rise -1/8" to adjust hook shape.

Construction/Workmanship:

- 1. Sample is missing drawcords, please ensure to tack at CB waist for production
- 2. Please ensure back waistband seam is straight, too angled on PPS.

- 1. Mẫu bị thiếu dây rút, vui lòng đảm bảo may chặn cố định dây rút tại đường may giữa cạp sau cho sản xuất.
- 2. Đường may cạp sau phải thẳng, trên mẫu PPS thì nó quá xiên.

- 1. Tăng góc cạp trước thêm 3/8 inch thành 0 inch ở vị trí hông thấp. Bổ sung phần đã tăng vào sườn ngoài để giữ nguyên vòng eo.
- 2. Tăng góc cạp sau thêm 1/4 inch thành 0 inch như trong hình. Bổ sung phần đã tăng vào sườn ngoài để giữ nguyên vòng eo và vòng hông.
- 3. Tăng chiều cao cạp sau lên 17 inch.
- 4. Nhà máy cần thông báo số đo vòng đùi đã được điều chỉnh do các thay đổi trên.
- 5. Khoét cạp trước thêm 1/8 inch để chỉnh lại hình dáng móc.



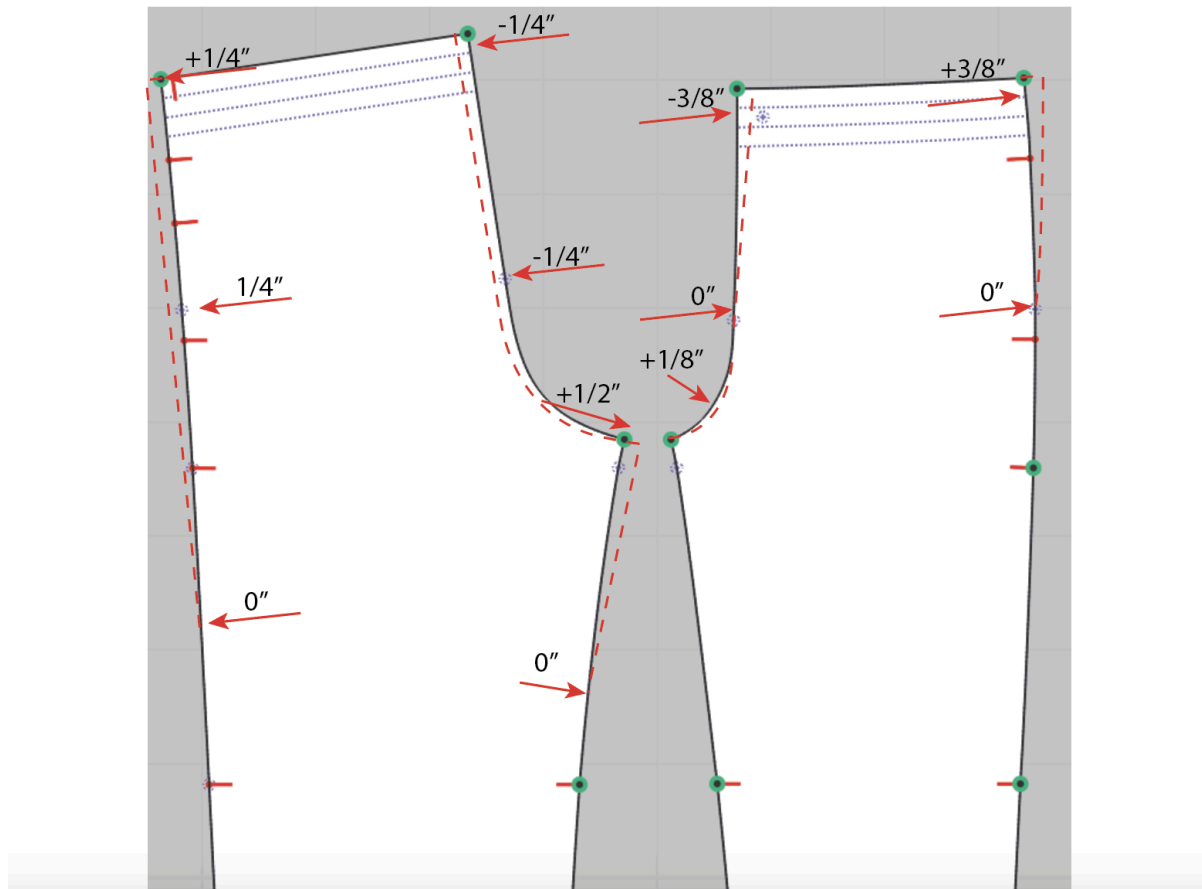


Screen Shot 2025-09-04 at 2.57.37 PM.jpg

1. Tăng góc cạp trước thêm  $\frac{3}{8}$  inch thành 0 inch ở vị trí hông thấp. Bổ sung phần đã tăng vào sườn ngoài để giữ nguyên vòng eo.
2. Tăng góc cạp sau thêm  $\frac{1}{4}$  inch thành 0 inch như trong hình. Bổ sung phần đã tăng vào sườn ngoài để giữ nguyên vòng eo và vòng hông.
3. Tăng chiều cao cạp sau lên 17 inch.
4. Khoét cạp trước thêm  $\frac{1}{8}$  inch để chỉnh lại hình dáng móc.

## SS26CP002 Queens Crest Sweatpant

1. Increase front rise angle  $\frac{3}{8}$ " to 0" at low hip. Add back to outseam to keep waist the same.
2. Increase back rise angle  $\frac{1}{4}$ " to 0" as pictured. Add back to outseam to keep waist + hip the same.
3. Increase back rise to 17", fty to advise revised thigh measurement.
4. Scoop out front rise  $-\frac{1}{8}$ " to adjust front hook shape.



Screen Shot 2025-09-08 at 3.07.09 PM.jpg