



Name	LS Rally Tee
Style No.	SS26CT025
Division	Mens
Category	Tees
Season	Spring/Summer
Year	2026
Size Scale	<div>M</div> -Sample size <div><div>XS</div><div>S</div><div>M</div><div>L</div><div>XL</div><div>XXL</div></div>
Style Status	Adopted
Factory	UN-AVAILABLE
Designer Name	Wes
TD Name	Anastasiya
Created by/Author	11/26/2025 Sarah Tota sarah.tota@aimeleondore.com

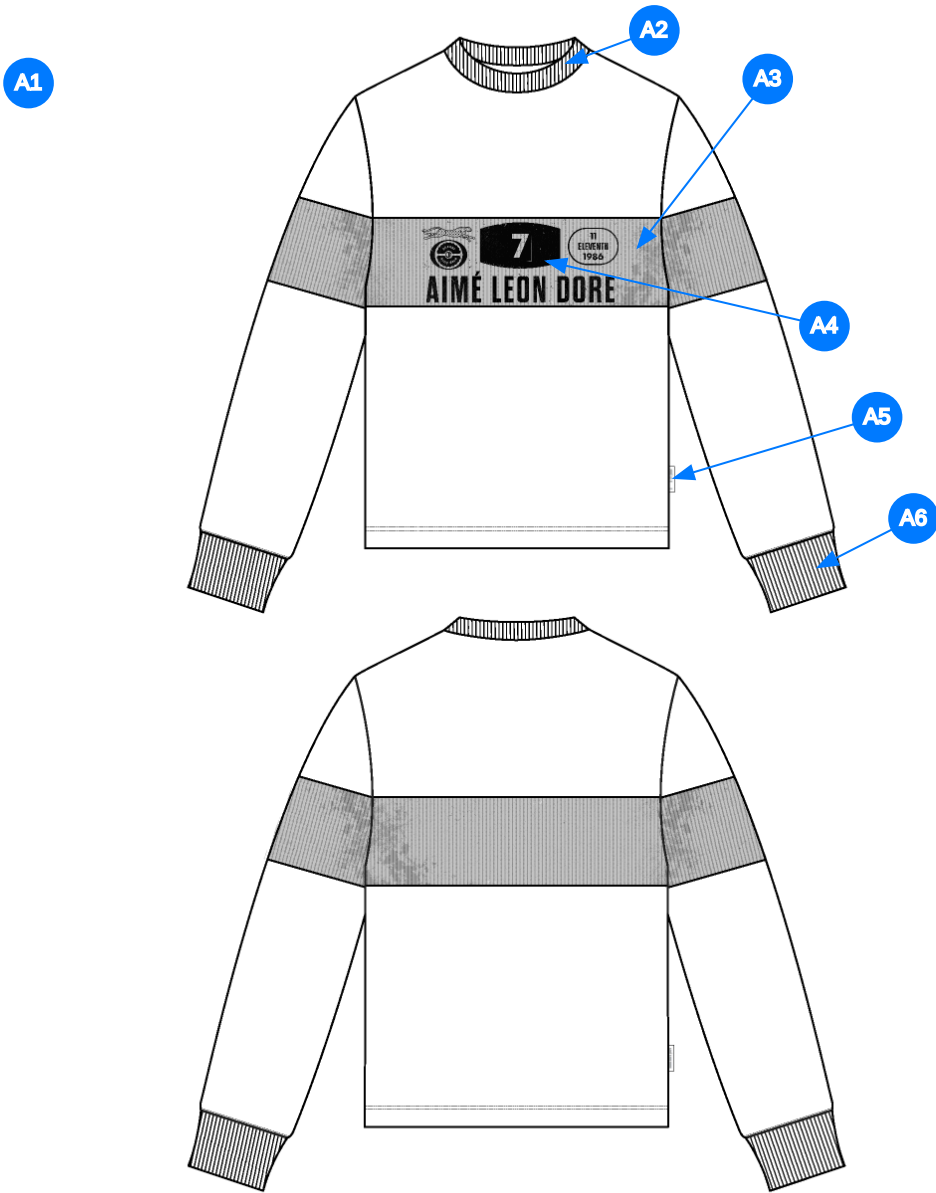
LS Rally Tee



1_B&W (3)-1



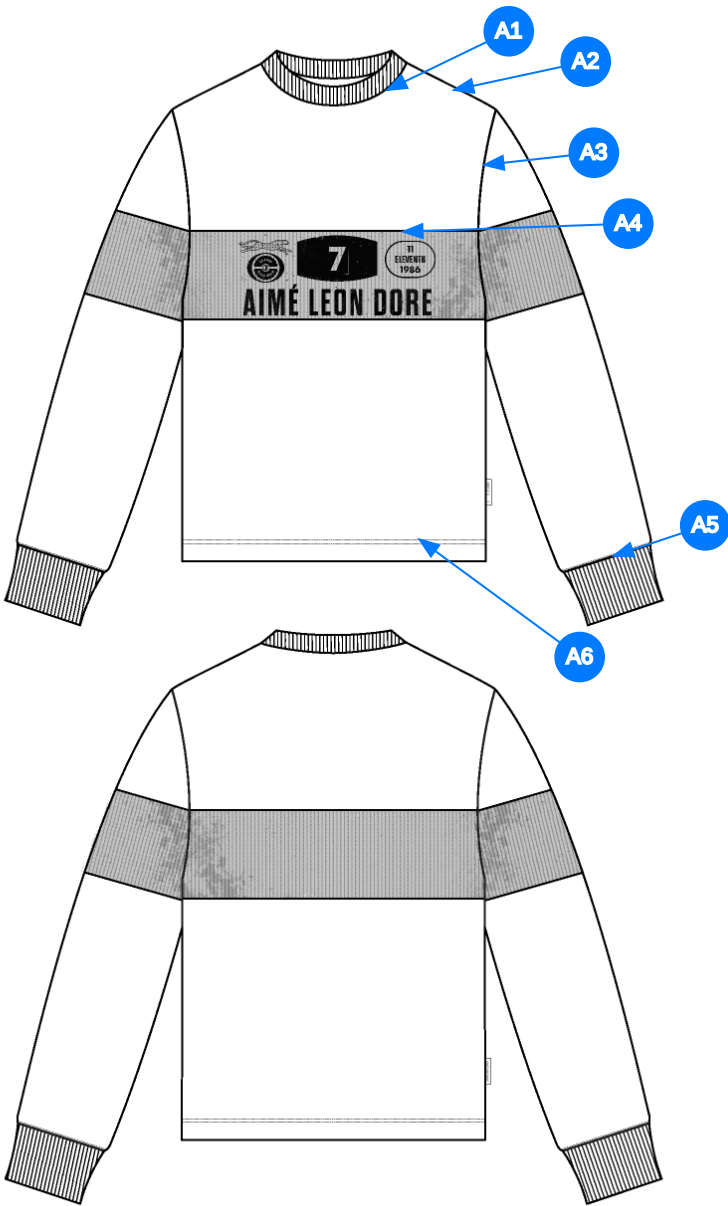
2_CLR (1)-1



Comments (6)

- A1** LS MOTO JERSEY (SS25CT031)
- A2** 1X1 RIB DOUBLED @ NECK
- A3** SET IN MESH PANEL @ BODY & SLEEVES
- A4** ARTWORK @ MESH PANEL
- A5** ALD WOVEN LABEL @ SIDE SEAM
- A6** 1X1 COTTON RIB DOUBLED @ SLEEVE CUFF

3_Construction Details-1



- Comments (6)
- A1** 1/4" SN TS @ NECK
 - A2** CLEAN SEAM @ SHOULDER
 - A3** CLEAN SEAM @ ARMHOLE
 - A4** SNES ON BODY SIDE @ PANEL
 - A5** CLEAN SEAM @ SLEEVE CUFF
 - A6** 1/4" DN TS @ BOTTOM HEM

4_Stitching Details-1

Sample Size: M

POINT OF MEASURE	CODE	HOW TO MEASURE	CRITICAL	TYPE	TOLERANCE	M
Front Body Length	S&K001	HPS to bottom edge	true	Full	1/2 in	27 1/2 in
Back Body Length	S&K002	CB neck seam to bottom edge	true	Full	1/2 in	26 3/4 in
Shoulder Seam Forward	S&K007	HPS to seam	false	Full	1/8 in	1/2 in
Shoulder Slope	S&K008	Shoulder point perpendicular to HPS	false	Full	1/4 in	2 in
Front Neck Drop	S&K004	HPS to neck seam	false	Full	1/8 in	3 3/4 in
Back Neck Drop	WV005	FROM HPS LEVEL STRAIGHT DOWN TO CB NECK SEAM	true	Full	1/8 in	3/4 in
Back Neck Width	S&K006	Seam to seam at back neck, at HPS point	false	Full	1/4 in	7 1/2 in
Neck Trim Height	S&K254	Neck Seam to trim edge (before folded)	false	Full	1/8 in	1 1/4 in
Minimum Neck Stretch	S&K199		true	Half	0 in	11 1/2 in
Across Shoulder Width- Seam to seam	S&K259	Seam to Seam	false	Full	1/4 in	18 in
Across Front/Across Back Position from HPS	eos7YR		true	Full	0 in	7 in
Across Front	S&K010	Straight Down from HPS, Seam Center to Seam Center	false	Half	1/4 in	15 3/4 in
Across Back	S&K011	Straight Down from HPS, Seam Center to Seam Center	false	Half	1/4 in	16 1/4 in
Chest Width	S&K012	1" Below armhole- edge to edge	true	Half	1/4 in	21 1/2 in
Bottom Opening Width- At Edge	S&K013	At bottom edge	true	Half	1/4 in	21 in
Bottom Hem Height	S&K014	Bottom edge to stitch line or trim seam	false	Full	1/8 in	1 in
Sleeve Length from CB Neck	S&K032	3-point measure from CB Neck to shoulder point to sleeve edge	true	Full	1/2 in	34 in
Armhole Drop	S&K016	Below HPS - measure perpendicular	false	Full	1/4 in	11 1/2 in
Bicep Width	S&K017	1" below armhole- edge to edge	false	Half	1/4 in	8 3/4 in
Forearm Width	S&K345	9" up from sleeve cuff edge	false	Half	1/4 in	6 1/2 in
Sleeve Opening Width 1" Above Rib Knit Seam	S&K		true	Half	1/4 in	5 1/4 in
Sleeve Opening Width- At Edge	S&K073	At edge	false	Half	1/4 in	3 3/4 in
Cuff Height	S&K036	Cuff edge to seam	false	Full	1/8 in	2 in
Side Slit Height	S&K093	From bottom edge to top of slit	false	Full	1/8 in	1 3/8 in
Panel Placement from HPS	SVX7VG		true	Full	1/8 in	8 3/4 in
Panel Height at Body and Sleeve	L8AcLL		true	Full	1/8 in	6 in
Center Artwork on Panel	ab7QVN		true	Full	1/8 in	0 in
Sleeve Panel Placement from Sleeve Cap	aPk6W2		true	Full	1/8 in	5 3/4 in
Loop Label Placement at Sideseam	S&K023	Bottom edge to bottom of loop label, at the WL side seam	false	Full	1/8 in	7 in

Sample Size: M

POINT OF MEASURE	CODE	HOW TO MEASURE	CRITICAL	TYPE	TOLERANCE	M
Front Body Length	S&K001	HPS to bottom edge	true	Full	1/2 in	27 1/2 in
Back Body Length	S&K002	CB neck seam to bottom edge	true	Full	1/2 in	26 3/4 in
Shoulder Seam Forward	S&K007	HPS to seam	false	Full	1/8 in	1/2 in
Shoulder Slope	S&K008	Shoulder point perpendicular to HPS	false	Full	1/4 in	2 in
Front Neck Drop	S&K004	HPS to neck seam	false	Full	1/8 in	3 3/4 in
Back Neck Drop	WV005	FROM HPS LEVEL STRAIGHT DOWN TO CB NECK SEAM	true	Full	1/8 in	3/4 in
Back Neck Width	S&K006	Seam to seam at back neck, at HPS point	false	Full	1/4 in	7 1/2 in
Neck Trim Height	S&K254	Neck Seam to trim edge (before folded)	false	Full	1/8 in	1 1/4 in
Minimum Neck Stretch	S&K199		true	Half	0 in	11 1/2 in
Across Shoulder Width- Seam to seam	S&K259	Seam to Seam	false	Full	1/4 in	18 in
Across Front/Across Back Position from HPS	eos7YR		true	Full	0 in	7 in
Across Front	S&K010	Straight Down from HPS, Seam Center to Seam Center	false	Half	1/4 in	15 3/4 in
Across Back	S&K011	Straight Down from HPS, Seam Center to Seam Center	false	Half	1/4 in	16 1/4 in
Chest Width	S&K012	1" Below armhole- edge to edge	true	Half	1/4 in	21 1/2 in
Bottom Opening Width- At Edge	S&K013	At bottom edge	true	Half	1/4 in	21 in
Bottom Hem Height	S&K014	Bottom edge to stitch line or trim seam	false	Full	1/8 in	1 in
Sleeve Length from CB Neck	S&K032	3-point measure from CB Neck to shoulder point to sleeve edge	true	Full	1/2 in	34 in
Armhole Drop	S&K016	Below HPS - measure perpendicular	false	Full	1/4 in	11 1/2 in
Bicep Width	S&K017	1" below armhole- edge to edge	false	Half	1/4 in	8 3/4 in
Forearm Width	S&K345	9" up from sleeve cuff edge	false	Half	1/4 in	6 1/2 in
Sleeve Opening Width 1" Above Rib Knit Seam	S&K		true	Half	1/4 in	5 1/4 in
Sleeve Opening Width- At Edge	S&K073	At edge	false	Half	1/4 in	3 3/4 in
Cuff Height	S&K036	Cuff edge to seam	false	Full	1/8 in	2 in
Side Slit Height	S&K093	From bottom edge to top of slit	false	Full	1/8 in	1 3/8 in
Panel Placement from HPS	SVX7VG		true	Full	1/8 in	8 3/4 in
Panel Height at Body and Sleeve	L8AcLL		true	Full	1/8 in	6 in
Center Artwork on Panel	ab7QVN		true	Full	1/8 in	0 in
Sleeve Panel Placement from Sleeve Cap	aPk6W2		true	Full	1/8 in	5 3/4 in
Loop Label Placement at Sideseam	S&K023	Bottom edge to bottom of loop label, at the WL side seam	false	Full	1/8 in	7 in

Measured Size: M

POINT OF MEASURE	CODE	HOW TO MEASURE	CRITICAL	TYPE	TOLERANCE	EXPECTED	PPS - RCVD	VARIANCE	ADJUST BY +/-	REVISED SPEC	MEASUREMENT NOTES
Front Body Length	S&K001	HPS to bottom edge	true	Full	1/2 in	27 1/2 in	27 in	-1/2 in	0 in	27 1/2 in	
Back Body Length	S&K002	CB neck seam to bottom edge	true	Full	1/2 in	26 3/4 in	25 3/4 in	-1 in	0 in	26 3/4 in	go back to spec
Shoulder Seam Forward	S&K007	HPS to seam	false	Full	1/8 in	1 1/2 in	1/4 in	-1/4 in	0 in	1 1/2 in	go back to spec
Shoulder Slope	S&K008	Shoulder point perpendicular to HPS	false	Full	1/4 in	2 in	1 3/4 in	-1/4 in	0 in	2 in	
Front Neck Drop	S&K004	HPS to neck seam	false	Full	1/8 in	3 3/4 in	3 3/4 in	0 in	0 in	3 3/4 in	
Back Neck Drop	WV005	FROM HPS LEVEL STRAIGHT DOWN TO CB NECK SEAM	true	Full	1/8 in	3/4 in	7/8 in	1/8 in	0 in	3/4 in	
Back Neck Width	S&K006	Seam to seam at back neck, at HPS point	false	Full	1/4 in	7 1/2 in	6 3/4 in	-3/4 in	0 in	7 1/2 in	go back to spec
Neck Trim Height	S&K254	Neck Seam to trim edge (before folded)	false	Full	1/8 in	1 1/4 in	1 1/8 in	-1/8 in	0 in	1 1/4 in	
Minimum Neck Stretch	S&K199		true	Half	0 in	0 in	11 1/2 in	11 1/2 in	0 in	0 in	
Across Shoulder Width- Seam to seam	S&K259	Seam to Seam	false	Full	1/4 in	18 in	17 1/2 in	-1/2 in	0 in	18 in	go back to spec
Across Front/Across Back Position from HPS	eos7YR		true	Full	0 in	7 in	7 in	0 in	0 in	7 in	
Across Front	S&K010	Straight Down from HPS, Seam Center to Seam Center	false	Half	1/4 in	15 3/4 in	15 7/8 in	1/8 in	0 in	15 3/4 in	
Across Back	S&K011	Straight Down from HPS, Seam Center to Seam Center	false	Half	1/4 in	16 1/4 in	16 in	-1/4 in	0 in	16 1/4 in	
Chest Width	S&K012	1" Below armhole- edge to edge	true	Half	1/4 in	21 1/2 in	20 3/4 in	-3/4 in	0 in	21 1/2 in	go back to spec
Bottom Opening Width- At Edge	S&K013	At bottom edge	true	Half	1/4 in	21 in	20 1/2 in	-1/2 in	0 in	21 in	go back to spec
Bottom Hem Height	S&K014	Bottom edge to stitch line or trim seam	false	Full	1/8 in	1 in	1 in	0 in	0 in	1 in	
Sleeve Length from CB Neck	S&K032	3-point measure from CB Neck to shoulder point to sleeve edge	true	Full	1/2 in	34 in	33 3/8 in	-5/8 in	0 in	34 in	go back to spec
Armhole Drop	S&K016	Below HPS - measure perpendicular	false	Full	1/4 in	11 1/2 in	11 in	-1/2 in	0 in	11 1/2 in	go back to spec
Bicep Width	S&K017	1" below armhole- edge to edge	false	Half	1/4 in	8 3/4 in	8 3/8 in	-3/8 in	0 in	8 3/4 in	go back to spec
Forearm Width	S&K345	9" up from sleeve cuff edge	false	Half	1/4 in	6 1/2 in	6 1/8 in	-3/8 in	0 in	6 1/2 in	go back to spec
Sleeve Opening Width 1" Above Rib Knit Seam	S&K		true	Half	1/4 in	5 1/4 in	5 1/8 in	-1/8 in	0 in	5 1/4 in	
Sleeve Opening Width- At Edge	S&K073	At edge	false	Half	1/4 in	3 3/4 in	3 3/4 in	0 in	0 in	3 3/4 in	
Cuff Height	S&K036	Cuff edge to seam	false	Full	1/8 in	2 in	1 7/8 in	-1/8 in	0 in	2 in	
Side Slit Height	S&K093	From bottom edge to top of slit	false	Full	1/8 in	1 3/8 in	1 1/4 in	-1/8 in	0 in	1 3/8 in	
Panel Placement from HPS	SVX7VG		true	Full	1/8 in	8 3/4 in	8 1/2 in	-1/4 in	0 in	8 3/4 in	go back to spec
Panel Height at Body and Sleeve	L8AcLL		true	Full	1/8 in	6 in	5 5/8 in	-3/8 in	0 in	6 in	go back to spec
Center Artwork on Panel	ab7QVN		true	Full	1/8 in	0 in	0 in	0 in	0 in	0 in	
Sleeve Panel Placement from Sleeve Cap	aPk6W2		true	Full	1/8 in	5 3/4 in	5 3/4 in	0 in	0 in	5 3/4 in	
Loop Label Placement at Sideseam	S&K023	Bottom edge to bottom of loop label, at the WL side seam	false	Full	1/8 in	7 in	6 3/4 in	-1/4 in	0 in	7 in	go back to spec

PPS - Sarah Tota

CREATED ON NOV 26, 2025 4:37 PM

PPS: SIZE:M, CREATED AT: 11-19-2025

SS26CT025 LS Rally Tee

FITTING DATE: 11/25/2025**MODEL/ATTENDEES:** Cal, Anastasiya, Sarah, Hyeyoung, Jeni, Wes, Lombardo, Bigio**STATUS:** Requesting 2nd PPS**Fit Comments:**

1. Back body length came in -1", go back to spec
2. Shoulder seam forward came in -1/4", go back to spec
3. Back neck width came in -3/4", go back to spec
4. Across shoulder came in -1/2", go back to spec
5. Chest came in -3/4", go back to spec
6. Bottom opening at edge came in -1/2", go back to spec
7. Sleeve length came in -5/8", go back to spec
8. Armhole drop came in -1/2", go back to spec
9. Bicep came in -3/8", go back to spec
10. Forearm came in -3/8", go back to spec
11. Panel placement from HPS came in -1/4", go back to spec
12. Panel height at body and sleeve came in -3/8", go back to spec
13. Loop label placement came in -1/4", go back to spec
14. Minimum neck stretch POM was added ensure minimum neck stretch is met for XS or let us know if grading needs to be revised

Construction/Artwork comments:

1. Remove paint splattering on yellow panel
2. Please ensure that you are accounting for shrinkage in wash
3. Please add a bar tack at the top edges of the side slit

1. Dài thân sau bị thiếu 1", quay lại thông số kỹ thuật.
2. Chỗ vai về phía trước bị thiếu 1/4", quay lại thông số kỹ thuật.
3. Rộng cổ sau bị thiếu 3/4", quay lại thông số kỹ thuật.
4. Ngang vai bị thiếu 1/2", quay lại thông số kỹ thuật.
5. Ngang ngực bị thiếu 3/4", quay lại thông số kỹ thuật.
6. Rộng lai tại mép bị thiếu 1/2", quay lại thông số kỹ thuật.
7. Dài tay áo bị thiếu 5/8", quay lại thông số kỹ thuật.
8. Hạ nách bị thiếu 1/2", quay lại thông số kỹ thuật.
9. Vòng bắp tay bị thiếu 3/8", quay lại thông số kỹ thuật.
10. Vòng cẳng tay bị thiếu 3/8", quay lại thông số kỹ thuật.
11. Vị trí miếng phối từ đỉnh vai bị thiếu 1/4", quay lại thông số kỹ thuật.
12. Chiều cao miếng phối ở thân và tay áo bị thiếu 3/8", quay lại thông số kỹ thuật.
13. Vị trí nhãn vòng bị thiếu 1/4", quay lại thông số kỹ thuật.
14. Đã thêm số đo độ căng cổ tối thiểu, đảm bảo đáp ứng độ căng cổ tối thiểu cho size XS hoặc cho chúng tôi biết nếu cần phải điều chỉnh cỡ nhảy size của cổ.

1. Loại bỏ các vết sơn bắn tung tóe trên miếng đắp màu vàng.
2. Vui lòng đảm bảo rằng bạn đã tính đến độ co rút sau khi giặt.
3. Vui lòng thêm một bộ ở các mép trên của đường xẻ tà bên hông



Screenshot 2025-11-26 at 11.42.02 AM.jpg