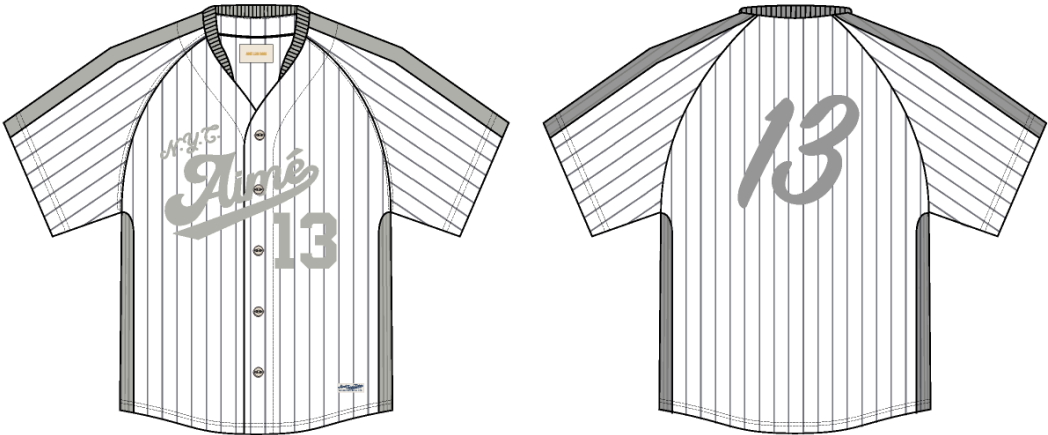


Baseball Jersey

| | |
|-------------------|---|
| Name | Baseball Jersey |
| Style No. | SS26CT015 |
| Division | Mens |
| Category | Tees |
| Season | Spring/Summer |
| Year | 2026 |
| Size Scale | <div>M</div> -Sample size <div>XS</div> <div>S</div> <div>M</div> <div>L</div> <div>XL</div> <div>XXL</div> |
| Style Status | Adopted |
| Factory | UN-AVAILABLE |
| Designer Name | Wes |
| TD Name | Anastasiya |
| Created by/Author | 1/8/2026 Anastasiya Zolotova anastasiya.zolotova@aimeleondore.com |



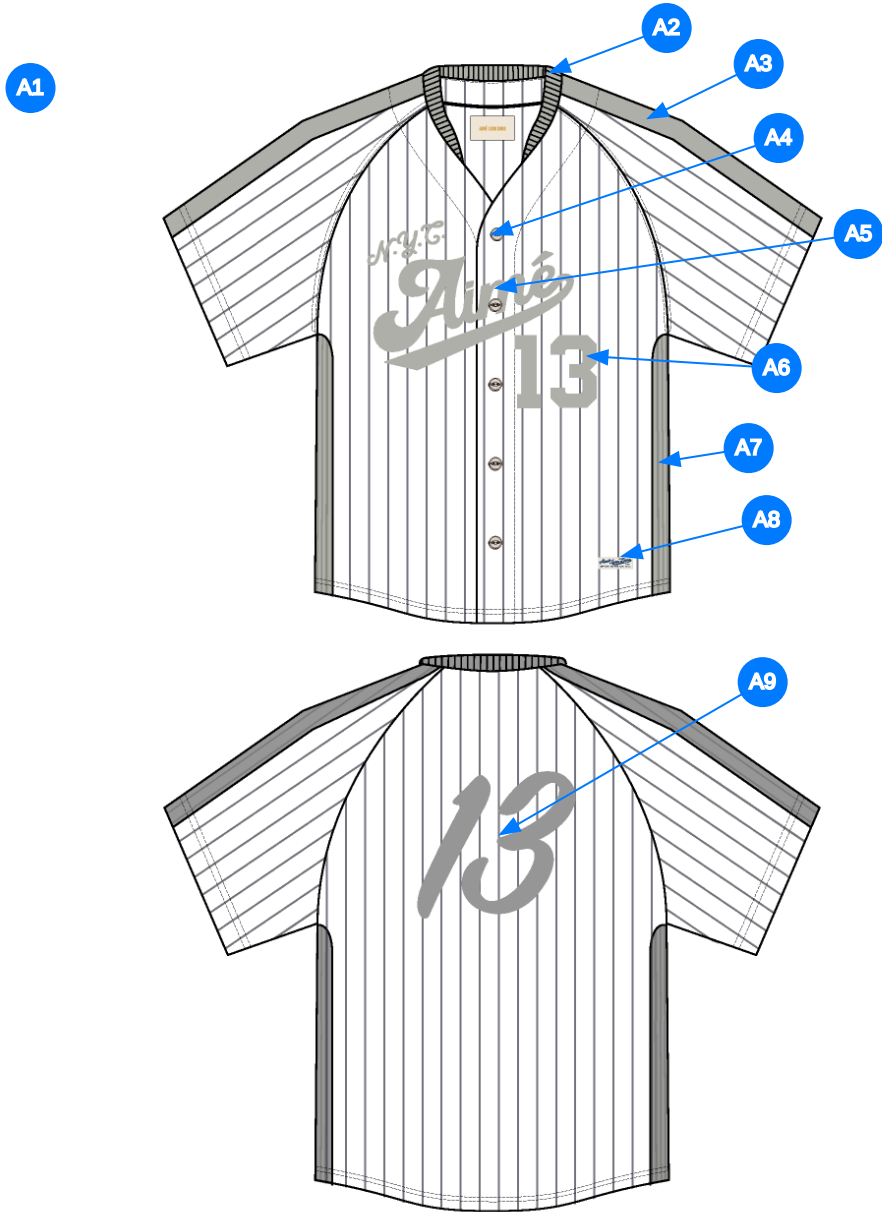
1_B&W-1



2_CLR-1



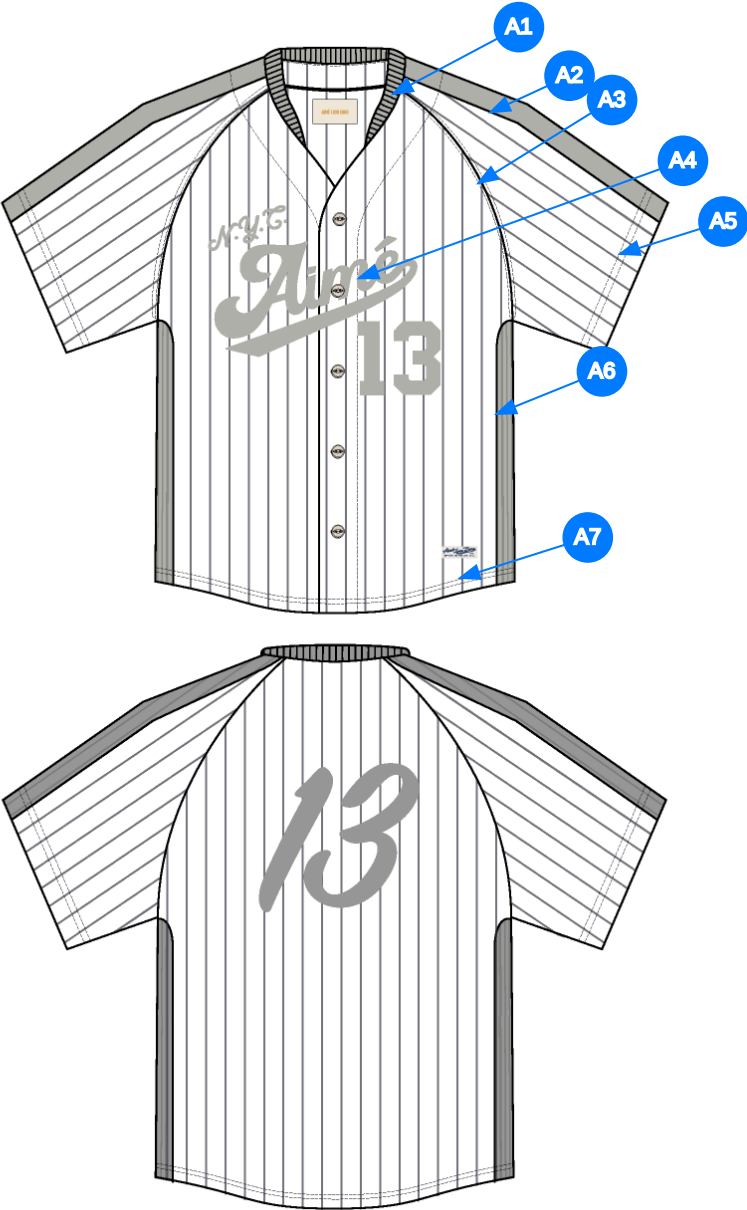
2_CLR-1



Comments (9)

- A1 FIT: SEE ATTACHED REFERENCE
- A2 1X1 RIB DOUBLED @ COLLAR
- A3 TOP APPLIED DROP NEEDLE PANELING @ SHOULDER
- A4 BUTTON CLOSURE @ CF - PLACKET FACING IN SELF
- A5 ARTWORK @ CF CHEST - SEE ADDITIONAL FILE FOR ARTWORK REFERENCE
- A6 ARTWORK @ CHEST - SEE ADDITIONAL FILE FOR ARTWORK DETAILS
- A7 TOP APPLIED DROP NEEDLE PANELING @ SIDE BODY
- A8 ALD SPORTSWEAR CO. LABEL @ WL BOTTOM HEM
- A9 ARTWORK @ CB - SEE ADDITIONAL FILE FOR ARTWORK DETAILS

3_Construction Details-1



Comments (7)

- A1** 1/8" SN TS @ NECK
- A2** SNES @ SHOULDER PANEL
- A3** STRADDLE STITCH @ ARMHOLE
- A4** SNES @ PLACKET
- A5** 1/4" DN TS @ SLEEVE OPENING
- A6** SNES @ SIDE BODY PANEL
- A7** 1/4" DN TS @ BOTTOM HEM

4_Stitching Details-1

Sample Size: M

| POINT OF MEASURE | HOW TO MEASURE | CRITICAL | TYPE | TOLERANCE | XS | S | M | L | XL | XXL |
|---|---|----------|------|-----------|---------|---------|-----------|--------|----------|----------|
| Front Body Length | HPS to bottom edge | true | Full | 1/2 in | -7/8 in | -7/8 in | 29 in | 7/8 in | 7/8 in | 7/8 in |
| Back Body Length | CB neck seam to bottom edge | true | Full | 1/2 in | -7/8 in | -7/8 in | 28 1/2 in | 7/8 in | 7/8 in | 7/8 in |
| Side Panel Forward At Shoulder | | true | Full | 1/8 in | 0 in | 0 in | 1 1/2 in | 0 in | 0 in | 0 in |
| Front Raglan Seam Placement at Neck | HPS to raglan seam along the neckline | false | Full | 1/8 in | -1/8 in | -1/8 in | 2 1/4 in | 1/8 in | 1/8 in | 1/8 in |
| Back Raglan Seam Placement at Neck | HPS to raglan seam along neckline | false | Full | 1/8 in | -1/8 in | -1/8 in | 1 1/4 in | 1/8 in | 1/8 in | 1/8 in |
| Raglan Shoulder Slope | 9 1/2" out from CB, at HPS line | false | Full | 1/8 in | 0 in | 0 in | 2 3/8 in | 0 in | 0 in | 0 in |
| Front Neck Drop - To Top Edge/Break | | false | Full | 1/8 in | -1/8 in | -1/8 in | 5 1/2 in | 1/8 in | 1/8 in | 1/8 in |
| Back Neck Drop | HPS to neck seam | false | Full | 1/8 in | 0 in | 0 in | 3/4 in | 0 in | 0 in | 0 in |
| Back Neck Width | Seam to seam at back neck, at HPS point | false | Full | 1/4 in | -1/4 in | -1/4 in | 6 7/8 in | 1/4 in | 1/4 in | 1/4 in |
| Across Front/Across Back Position from HPS | | true | Full | 0 in | -1/4 in | -1/4 in | 7 in | 1/4 in | 1/4 in | 1/4 in |
| Across Front | Down from HPS, Seam to seam | false | Half | 1/4 in | -3/4 in | -3/4 in | 13 3/4 in | 3/4 in | 1 in | 1 in |
| Across Back | Down from HPS, Seam to Seam | false | Half | 1/4 in | -3/4 in | -3/4 in | 15 in | 3/4 in | 1 in | 1 in |
| Chest Width | 1" Below armhole- edge to edge | true | Half | 1/4 in | -1 in | -1 in | 23 1/2 in | 1 in | 1 1/2 in | 1 1/2 in |
| Bottom Opening Width- At Edge | At bottom edge | true | Half | 1/4 in | -1 in | -1 in | 23 in | 1 in | 1 1/2 in | 1 1/2 in |
| Bottom Hem Height | Bottom edge to stitch line or trim seam | false | Full | 1/8 in | 0 in | 0 in | 3/8 in | 0 in | 0 in | 0 in |
| Sleeve Length from CB Neck | 3-point measure from CB Neck to shoulder point to sleeve edge | true | Full | 3/8 in | -3/4 in | -3/4 in | 19 1/8 in | 3/4 in | 1 in | 1 in |
| Armhole Drop | Below HPS - measure perpendicular | false | Full | 1/4 in | -3/8 in | -3/8 in | 12 1/2 in | 3/8 in | 1/2 in | 1/2 in |
| Bicep Width | 1" below armhole- edge to edge | false | Half | 1/4 in | -3/8 in | -3/8 in | 9 3/4 in | 3/8 in | 1/2 in | 1/2 in |
| Sleeve Opening Width- At Edge | At edge | false | Half | 1/4 in | -1/4 in | -1/4 in | 8 1/2 in | 1/4 in | 3/8 in | 3/8 in |
| Sleeve Hem Height | | false | Full | 1/8 in | 0 in | 0 in | 1 in | 0 in | 0 in | 0 in |
| CF Placket Width | Width of placket edge to edge | false | Full | 1/8 in | 0 in | 0 in | 1 3/4 in | 0 in | 0 in | 0 in |
| 1st Button Placement from CF Neck Edge to Button Center | | false | Full | 1/8 in | 0 in | 0 in | 1 1/2 in | 0 in | 0 in | 0 in |
| Last Button Placement Up from Hem | | false | Full | 1/8 in | 0 in | 0 in | 4 3/4 in | 0 in | 0 in | 0 in |
| Shirt Tail Height | | true | Full | 1/8 in | 0 in | 0 in | 2 1/2 in | 0 in | 0 in | 0 in |
| Top Applied Drop Needle Width | At Shoulder/Sleeve/Side Seam | true | Full | 1/8 in | 0 in | 0 in | 2 in | 0 in | 0 in | 0 in |
| Neck Trim Height | Neck Seam to trim edge (before folded) | false | Full | 1/8 in | 0 in | 0 in | 7/8 in | 0 in | 0 in | 0 in |
| CF Artwork Placement below Neck Top Edge | | false | Full | 1/8 in | 0 in | 0 in | 1 1/2 in | 0 in | 0 in | 0 in |
| CB Artwork Placement below CB Neck Seam | From CB Neck Seam to Top Edge of Artwork | false | Full | 1/8 in | 0 in | 0 in | 5 in | 0 in | 0 in | 0 in |
| WL Exterior Label from Side Seam | | false | Full | 1/8 in | 0 in | 0 in | 3 1/8 in | 0 in | 0 in | 0 in |
| WL Exterior Label from Hem | | true | Full | 1/8 in | 0 in | 0 in | 1 3/4 in | 0 in | 0 in | 0 in |

Sample Size: M

| POINT OF MEASURE | HOW TO MEASURE | CRITICAL | TYPE | TOLERANCE | XS | S | M | L | XL | XXL |
|---|---|----------|------|-----------|-----------|-----------|-----------|-----------|-----------|-----------|
| Front Body Length | HPS to bottom edge | true | Full | 1/2 in | 27 1/4 in | 28 1/8 in | 29 in | 29 7/8 in | 30 3/4 in | 31 5/8 in |
| Back Body Length | CB neck seam to bottom edge | true | Full | 1/2 in | 26 3/4 in | 27 5/8 in | 28 1/2 in | 29 3/8 in | 30 1/4 in | 31 1/8 in |
| Side Panel Forward At Shoulder | | true | Full | 1/8 in | 1 1/2 in | 1 1/2 in | 1 1/2 in | 1 1/2 in | 1 1/2 in | 1 1/2 in |
| Front Raglan Seam Placement at Neck | HPS to raglan seam along the neckline | false | Full | 1/8 in | 2 in | 2 1/8 in | 2 1/4 in | 2 3/8 in | 2 1/2 in | 2 5/8 in |
| Back Raglan Seam Placement at Neck | HPS to raglan seam along neckline | false | Full | 1/8 in | 1 in | 1 1/8 in | 1 1/4 in | 1 3/8 in | 1 1/2 in | 1 5/8 in |
| Raglan Shoulder Slope | 9 1/2" out from CB, at HPS line | false | Full | 1/8 in | 2 3/8 in | 2 3/8 in | 2 3/8 in | 2 3/8 in | 2 3/8 in | 2 3/8 in |
| Front Neck Drop - To Top Edge/Break | | false | Full | 1/8 in | 5 1/4 in | 5 3/8 in | 5 1/2 in | 5 5/8 in | 5 3/4 in | 5 7/8 in |
| Back Neck Drop | HPS to neck seam | false | Full | 1/8 in | 3/4 in | 3/4 in | 3/4 in | 3/4 in | 3/4 in | 3/4 in |
| Back Neck Width | Seam to seam at back neck, at HPS point | false | Full | 1/4 in | 6 3/8 in | 6 5/8 in | 6 7/8 in | 7 1/8 in | 7 3/8 in | 7 5/8 in |
| Across Front/Across Back Position from HPS | | true | Full | 0 in | 6 1/2 in | 6 3/4 in | 7 in | 7 1/4 in | 7 1/2 in | 7 3/4 in |
| Across Front | Down from HPS, Seam to seam | false | Half | 1/4 in | 12 1/4 in | 13 in | 13 3/4 in | 14 1/2 in | 15 1/2 in | 16 1/2 in |
| Across Back | Down from HPS, Seam to Seam | false | Half | 1/4 in | 13 1/2 in | 14 1/4 in | 15 in | 15 3/4 in | 16 3/4 in | 17 3/4 in |
| Chest Width | 1" Below armhole- edge to edge | true | Half | 1/4 in | 21 1/2 in | 22 1/2 in | 23 1/2 in | 24 1/2 in | 26 in | 27 1/2 in |
| Bottom Opening Width- At Edge | At bottom edge | true | Half | 1/4 in | 21 in | 22 in | 23 in | 24 in | 25 1/2 in | 27 in |
| Bottom Hem Height | Bottom edge to stitch line or trim seam | false | Full | 1/8 in | 3/8 in | 3/8 in | 3/8 in | 3/8 in | 3/8 in | 3/8 in |
| Sleeve Length from CB Neck | 3-point measure from CB Neck to shoulder point to sleeve edge | true | Full | 3/8 in | 17 5/8 in | 18 3/8 in | 19 1/8 in | 19 7/8 in | 20 7/8 in | 21 7/8 in |
| Armhole Drop | Below HPS - measure perpendicular | false | Full | 1/4 in | 11 3/4 in | 12 1/8 in | 12 1/2 in | 12 7/8 in | 13 3/8 in | 13 7/8 in |
| Bicep Width | 1" below armhole- edge to edge | false | Half | 1/4 in | 9 in | 9 3/8 in | 9 3/4 in | 10 1/8 in | 10 5/8 in | 11 1/8 in |
| Sleeve Opening Width- At Edge | At edge | false | Half | 1/4 in | 8 in | 8 1/4 in | 8 1/2 in | 8 3/4 in | 9 1/8 in | 9 1/2 in |
| Sleeve Hem Height | | false | Full | 1/8 in | 1 in | 1 in | 1 in | 1 in | 1 in | 1 in |
| CF Placket Width | Width of placket edge to edge | false | Full | 1/8 in | 1 3/4 in | 1 3/4 in | 1 3/4 in | 1 3/4 in | 1 3/4 in | 1 3/4 in |
| 1st Button Placement from CF Neck Edge to Button Center | | false | Full | 1/8 in | 1 1/2 in | 1 1/2 in | 1 1/2 in | 1 1/2 in | 1 1/2 in | 1 1/2 in |
| Last Button Placement Up from Hem | | false | Full | 1/8 in | 4 3/4 in | 4 3/4 in | 4 3/4 in | 4 3/4 in | 4 3/4 in | 4 3/4 in |
| Shirt Tail Height | | true | Full | 1/8 in | 2 1/2 in | 2 1/2 in | 2 1/2 in | 2 1/2 in | 2 1/2 in | 2 1/2 in |
| Top Applied Drop Needle Width | At Shoulder/Sleeve/Side Seam | true | Full | 1/8 in | 2 in | 2 in | 2 in | 2 in | 2 in | 2 in |
| Neck Trim Height | Neck Seam to trim edge (before folded) | false | Full | 1/8 in | 7/8 in | 7/8 in | 7/8 in | 7/8 in | 7/8 in | 7/8 in |
| CF Artwork Placement below Neck Top Edge | | false | Full | 1/8 in | 1 1/2 in | 1 1/2 in | 1 1/2 in | 1 1/2 in | 1 1/2 in | 1 1/2 in |
| CB Artwork Placement below CB Neck Seam | From CB Neck Seam to Top Edge of Artwork | false | Full | 1/8 in | 5 in | 5 in | 5 in | 5 in | 5 in | 5 in |
| WL Exterior Label from Side Seam | | false | Full | 1/8 in | 3 1/8 in | 3 1/8 in | 3 1/8 in | 3 1/8 in | 3 1/8 in | 3 1/8 in |
| WL Exterior Label from Hem | | true | Full | 1/8 in | 1 3/4 in | 1 3/4 in | 1 3/4 in | 1 3/4 in | 1 3/4 in | 1 3/4 in |

Measured Size: M

| POINT OF MEASURE | HOW TO MEASURE | CRITICAL | TYPE | TOLERANCE | EXPECTED | PPS - RCVD | VARIANCE | ADJUST BY +/- | REVISED SPEC | MEASUREMENT NOTES |
|---|---|----------|------|-----------|-----------|------------|----------|---------------|--------------|-------------------|
| Front Body Length | HPS to bottom edge | true | Full | 1/2 in | 29 in | 29 in | 0 in | 0 in | 29 in | |
| Back Body Length | CB neck seam to bottom edge | true | Full | 1/2 in | 28 1/2 in | 28 1/2 in | 0 in | 0 in | 28 1/2 in | |
| Side Panel Forward At Shoulder | | true | Full | 1/8 in | 1 1/2 in | 1 3/4 in | 1/4 in | 0 in | 1 1/2 in | Back to Spec |
| Front Raglan Seam Placement at Neck | HPS to raglan seam along the neckline | false | Full | 1/8 in | 2 1/4 in | 2 1/2 in | 1/4 in | 0 in | 2 1/4 in | Back to Spec |
| Back Raglan Seam Placement at Neck | HPS to raglan seam along neckline | false | Full | 1/8 in | 1 1/4 in | 1 1/4 in | 0 in | 0 in | 1 1/4 in | |
| Raglan Shoulder Slope | 9 1/2" out from CB, at HPS line | false | Full | 1/8 in | 0 in | 2 3/8 in | 2 3/8 in | 2 3/8 in | 2 3/8 in | Keep As Sample |
| Front Neck Drop - To Top Edge/Break | | false | Full | 1/8 in | 5 1/2 in | 5 3/4 in | 1/4 in | 0 in | 5 1/2 in | Back to Spec |
| Back Neck Drop | HPS to neck seam | false | Full | 1/8 in | 3/4 in | 1 in | 1/4 in | 0 in | 3/4 in | Back to Spec |
| Back Neck Width | Seam to seam at back neck, at HPS point | false | Full | 1/4 in | 6 7/8 in | 6 3/4 in | -1/8 in | 0 in | 6 7/8 in | |
| Across Front/Across Back Position from HPS | | true | Full | 0 in | 0 in | 0 in | 0 in | 7 in | 7 in | Add |
| Across Front | Down from HPS, Seam to seam | false | Half | 1/4 in | 13 3/4 in | 13 1/2 in | -1/4 in | 0 in | 13 3/4 in | |
| Across Back | Down from HPS, Seam to Seam | false | Half | 1/4 in | 15 in | 15 in | 0 in | 0 in | 15 in | |
| Chest Width | 1" Below armhole- edge to edge | true | Half | 1/4 in | 23 1/2 in | 23 1/4 in | -1/4 in | 0 in | 23 1/2 in | |
| Bottom Opening Width- At Edge | At bottom edge | true | Half | 1/4 in | 23 in | 22 3/4 in | -1/4 in | 0 in | 23 in | |
| Bottom Hem Height | Bottom edge to stitch line or trim seam | false | Full | 1/8 in | 3/8 in | 3/8 in | 0 in | 0 in | 3/8 in | |
| Sleeve Length from CB Neck | 3-point measure from CB Neck to shoulder point to sleeve edge | true | Full | 3/8 in | 19 in | 18 3/4 in | -1/4 in | 1/8 in | 19 1/8 in | Follow Revised |
| Armhole Drop | Below HPS - measure perpendicular | false | Full | 1/4 in | 12 1/2 in | 12 1/2 in | 0 in | 0 in | 12 1/2 in | |
| Bicep Width | 1" below armhole- edge to edge | false | Half | 1/4 in | 9 3/4 in | 9 3/4 in | 0 in | 0 in | 9 3/4 in | |
| Sleeve Opening Width- At Edge | At edge | false | Half | 1/4 in | 8 1/2 in | 8 1/2 in | 0 in | 0 in | 8 1/2 in | |
| Sleeve Hem Height | | false | Full | 1/8 in | 1 in | 1 in | 0 in | 0 in | 1 in | |
| CF Placket Width | Width of placket edge to edge | false | Full | 1/8 in | 1 3/4 in | 1 5/8 in | -1/8 in | 0 in | 1 3/4 in | |
| 1st Button Placement from CF Neck Edge to Button Center | | false | Full | 1/8 in | 1 1/2 in | 1 1/2 in | 0 in | 0 in | 1 1/2 in | |
| Last Button Placement Up from Hem | | false | Full | 1/8 in | 4 3/4 in | 4 3/4 in | 0 in | 0 in | 4 3/4 in | |
| Shirt Tail Height | | true | Full | 1/8 in | 2 1/2 in | 2 1/2 in | 0 in | 0 in | 2 1/2 in | |
| Top Applied Drop Needle Width | At Shoulder/Sleeve/Side Seam | true | Full | 1/8 in | 2 in | 2 in | 0 in | 0 in | 2 in | |
| Neck Trim Height | Neck Seam to trim edge (before folded) | false | Full | 1/8 in | 7/8 in | 7/8 in | 0 in | 0 in | 7/8 in | |
| CF Artwork Placement below Neck Top Edge | | false | Full | 1/8 in | 1 1/2 in | 1 1/2 in | 0 in | 0 in | 1 1/2 in | |
| CB Artwork Placement below CB Neck Seam | From CB Neck Seam to Top Edge of Artwork | false | Full | 1/8 in | 5 in | 5 in | 0 in | 0 in | 5 in | |
| WL Exterior Label from Side Seam | | false | Full | 1/8 in | 2 3/4 in | 3 in | 1/4 in | 3/8 in | 3 1/8 in | Follow Revised |
| WL Exterior Label from Hem | | true | Full | 1/8 in | 1 3/4 in | 1 3/4 in | 0 in | 0 in | 1 3/4 in | |

PPS - Anastasiya Zolotova

CREATED ON JAN 8, 2026 9:18 PM

PPS: SIZE:M, CREATED AT: 01-05-2026

SS26CT015 Baseball Jersey

FITTING DATE: 1/6/26**MODEL/ATTENDEES:** Bigs, Cal, Lombardo, Anastasiya, Hyeyoung, Jeni, Sarah**STATUS:** PPS Approved to TOP (Pending Mini Marker)

1. Vị trí mảnh phổi sườn chồm trước bị dư +1/4", yêu cầu làm đúng theo spec.
2. Vị trí đường may raglan thân trước bị dư +1/4", yêu cầu làm đúng theo spec.
3. Độ dốc vai raglan thực tế là 2 3/8", giữ nguyên theo mẫu.
4. Hạ cổ trước bị dư +1/4", làm đúng theo spec.
5. Hạ cổ sau bị dư +1/4", làm đúng theo spec.
6. Làm theo thông số dài tay đã sửa đổi là 19 1/8".
7. Làm theo vị trí nhãn ngoài (bên trái người mặc) cách đường sườn 3 1/8" như đã sửa đổi.

Fit Comments:

1. Side panel forward came in +1/4", go back to spec.
2. Front raglan seam placement came in +1/4", go back to spec.
3. Raglan shoulder slope came in 2 3/8", keep as sample.
4. Front neck drop came in +1/4", go back to spec.
5. Back neck drop came in +1/4", go back to spec.
6. Follow revised sleeve length of 19 1/8".
7. Follow revised WL exterior label from side seam to be 3 1/8"

1. Gửi sơ đồ mini marker cho tất cả các size, thể hiện rõ sọc và hình in trên các mảnh kèm các thay đổi dưới đây.
2. Dời sọc mảnh vào giữa nếp áo, cắt ngang tâm khuy. Khách không muốn sọc bị cắt mất ở mép nếp như mẫu PPS.
3. Sọc ở giữa tay áo phải được che bởi phần bo đắp đè lên trên (giống mẫu fit 1). Khách không muốn thấy sọc bị cắt sát mép bo.

Stripe:

1. Please send a mini marker for all sizes with stripe and artwork on panels w/below changes.
2. Shift thinner stripe to center of placket intersecting the center of the buttonhole. Team doesn't want the stripe cut off at placket edge as PPS.
3. Sleeve stripes @ sleeve center should be hidden by top applied rib as 1st fit. Team doesn't want to see stripes cut off close to top applied edge.

Construction/Workmanship:

1. Please be careful with pressing, hem was folded/pressed up.
1. Cần thận khi ủi, lai áo đang bị gấp ngược lên trên.

Grading:

1. Previously team suggested 1/4" jump grade 3/8" grading for across front/across back for FW24WT028 Baseball Jersey. Does UA suggest the same grading or keeping our regular grading as graded spec page?
1. Trước đây team đề xuất bước nhảy 1/4" và nhảy size 3/8" cho rộng ngực trước/sau của mẫu FW24WT028 Baseball Jersey. Phía UA có đồng ý cách nhảy size này hay giữ theo bảng spec chuẩn?



Screen Shot 2026-01-08 at 11.58.59 AM.jpg

Sọc ở giữa tay áo phải được che bởi phần bo đắp đè lên trên (giống mẫu fit 1). Khách không muốn thấy sọc bị cắt sát mép bo.

SS26CT015 Baseball Jersey

Sleeve stripes @ sleeve center should be hidden by top applied rib as 1st fit.
Team doesn't want to see stripes cut off close to top applied edge.



Screen Shot 2026-01-08 at 4.15.40 PM.jpg

Dời sọc mảnh vào giữa nếp áo, cắt ngang tâm khuy. Khách không muốn sọc bị cắt mất ở mép nếp như mẫu PPS.

SS26CT015 Baseball Jersey

Shift thinner stripe to center of placket intersecting the center of the buttonhole.
Team doesn't want to see the stripe cut off at placket edge.



Screen Shot 2026-01-08 at 4.17.08 PM.jpg