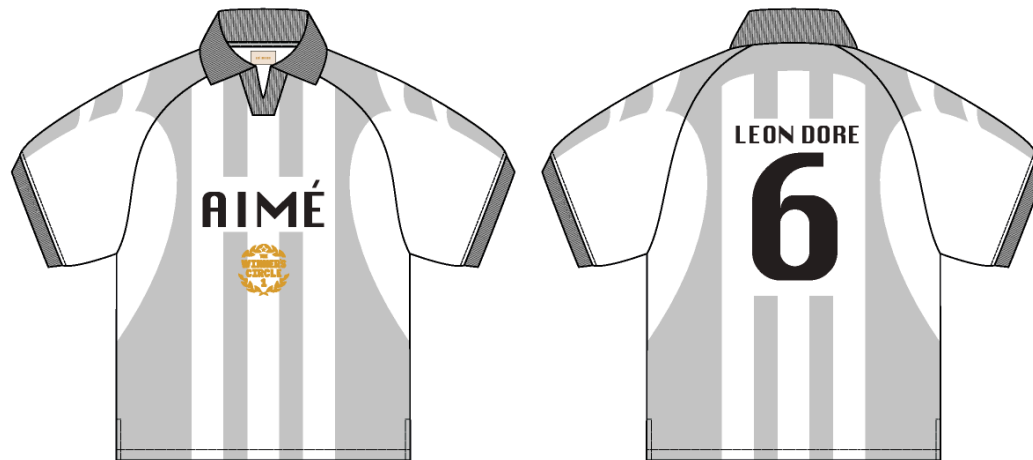


Soccer Jersey

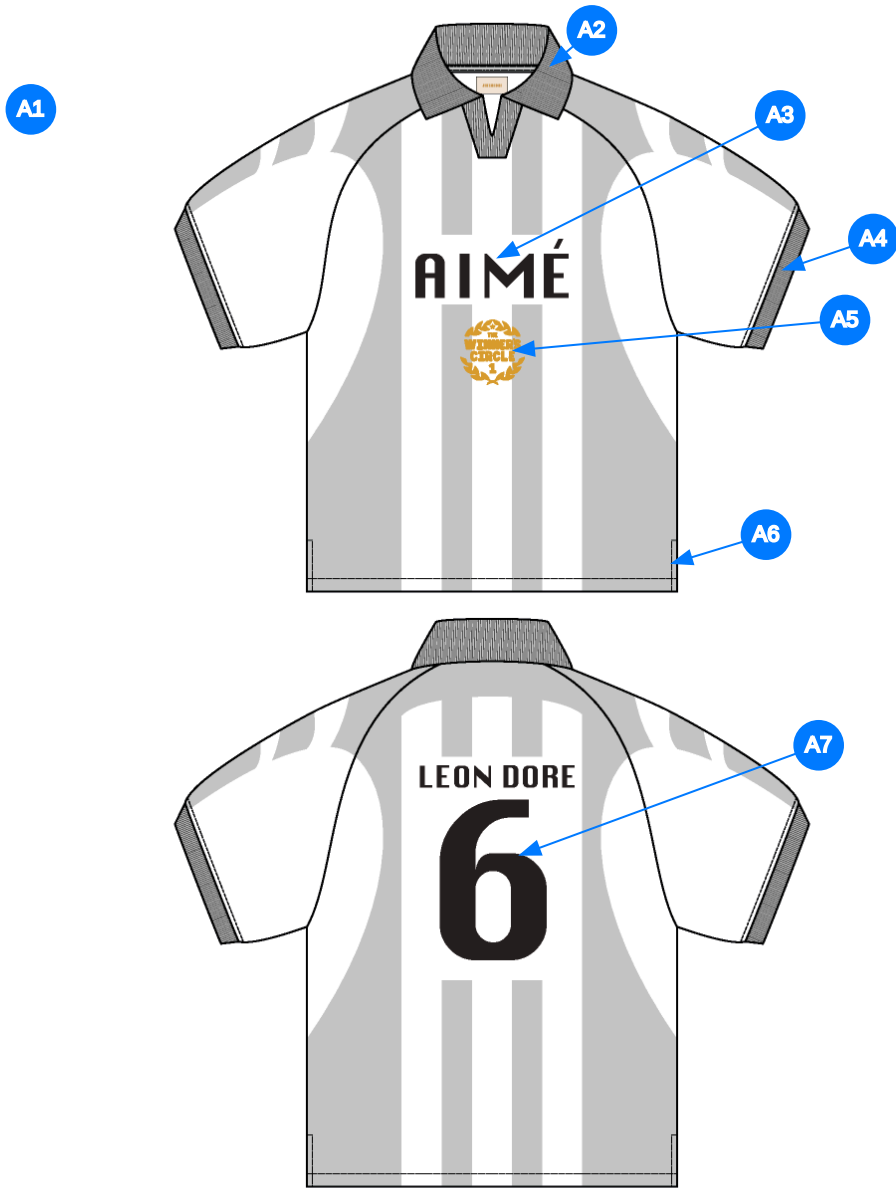
Name	Soccer Jersey
Style No.	SS26CT014
Division	Mens
Category	Tees
Season	Spring/Summer
Year	2026
Size Scale	<div>M</div> -Sample size <div>XS</div> <div>S</div> <div>M</div> <div>L</div> <div>XL</div> <div>XXL</div>
Style Status	Development
Factory	UN-AVAILABLE
Designer Name	Wes
TD Name	Anastasiya
Created by/Author	3/12/2025 Jeni Fitzgerald jeni.fitzgerald@aimeleondore.com



1\_B&W-1



2\_CLR-1



Comments (7)

- A1** FIT: NOVELTY JERSEY (SS24CT025)
- A2** 1X1 RIB DOUBLED @ NECK - SEE ADDITIONAL PAGE FOR COLLAR CONSTRUCTION DETAILS - POLY TAPE ALONG NECK
- A3** PRINTED ARTWORK @ BODY & SLEEVES - SEE ADDITIONAL FILE FOR ARTWORK DETAILS
- A4** 1X1 RIB DOUBLED @ COLLAR
- A5** ARTWORK @ CF - SEE ADDITIONAL FILE FOR ARTWORK DETAILS
- A6** VENT @ SIDE SEAM - TURNBACK W/ COVERLOCK
- A7** PRINTED ARTWORK @ BODY & SLEEVES - SEE ADDITIONAL FILE FOR LAYOUT DETAILS

3\_Construction Details-1



Comments (6)

- A1 1/4" SN TS @ NECK
- A2 CLEAN SEAM FINISH @ RAGLAN SEAM
- A3 1/8" SN TS @ SLEEVE CUFF
- A4 CLEAN SEAM @ SIDE SEAM
- A5 SN TS @ VENT
- A6 1/4" SN TS @ BOTTOM HEM

4\_Stitching Details-1

## COLLAR CONSTRUCTION REFERENCE



5\_Collar Construction-1

Sample Size: M

POINT OF MEASURE	CODE	HOW TO MEASURE	CRITICAL	TYPE	TOLERANCE	M
Front Body Length	S&K01	HPS to bottom edge	true	Full	1/4 in	27 1/4 in
Back Body Length	S&K02	CB neck seam to bottom edge	true	Full	1/4 in	26 1/4 in
Raglan Shoulder Slope	S&K37	9 1/2" out from CB, at HPS line	false	Full	1/8 in	2 in
Front Neck Drop	S&K04	HPS to neck seam	false	Full	1/8 in	6 1/2 in
Back Neck Drop	S&K05	HPS to neck seam	false	Full	1/8 in	3/4 in
Back Neck Width	S&K06	Seam to seam at back neck, at HPS point	false	Full	1/4 in	7 1/2 in
Minimum Neck Stretch	S&K199		true	Half	0 in	11 1/2 in
CF Placket Length	S&K081	CF neck drop to bottom of placket	true	Full	1/8 in	4 in
CF Placket Width @ Bottom Edge of Placket	S&K082		false	Full	1/8 in	1 3/4 in
Front Saddle Seam Placement at Neck	S&K38	HPS to saddle seam straight down	false	Full	1/8 in	2 1/4 in
Back Saddle Seam Placement at Neck	S&K39	HPS to saddle seam straight down	false	Full	1/8 in	2 in
Across Front	S&K010	7" dwn from HPS, Seam to seam	false	Half	1/4 in	13 1/2 in
Across Back	S&K011	7" dwn from HPS, Seam to Seam	false	Half	1/4 in	14 3/4 in
Chest Width	S&K012	1" Below armhole- edge to edge	true	Half	1/4 in	22 1/2 in
Bottom Opening Width- At Edge	S&K108	Straight with seam relaxed	true	Half	1/4 in	22 in
Sleeve Length from CB Neck	S&K032	3-point measure from CB Neck to shoulder point to sleeve edge	true	Full	1/2 in	19 1/2 in
Armhole Drop	S&K016	Below HPS - measure perpendicular	false	Full	1/4 in	11 3/4 in
Bicep Width	S&K017	1" below armhole- edge to edge	false	Half	1/4 in	9 in
Sleeve Opening Width- At Edge	S&K73	At edge	false	Half	1/4 in	6 1/2 in
Sleeve Hem Trim Height	S&K019	Edge to seam- trim width	false	Full	1/8 in	3/4 in
Collar Point Length	S&K024	Neck seam to collar point, along edge	false	Full	1/8 in	2 1/2 in
Collar Height at CB	S&K025	Neck seam to collar edge at CB	false	Full	1/8 in	3 1/2 in
Collar Length along the edge	S&K026	Collar point to collar point, along the edge	false	Full	3/8 in	15 1/2 in
CF Artwork Placement below CF Neckline	S&K112	From CF Neck Seam to Top Edge of Artwork	false	Full	1/8 in	5 1/2 in
CB Artwork Placement below CB Neck Seam	S&K109	From CB Neck Seam to Top Edge of Artwork	false	Full	1/8 in	4 1/2 in




Development Notes - Anastasiya Zolotova

CREATED ON MAR 7, 2025 11:15 PM

SS26CT014 Soccer Jersey  
Date: 3/7/24  
Status:Requesting 1st Proto  
TD: Anastasiya

Fit: Please follow FW24CT064 Porsche Soccer Jersey for fit with below changes.  
-No overlap on neck trim insert, see sketch  
-Follow revised neck width and front neck drop.



COMPONENT		QTY	1.  PROTO
1	<b>UA-MA037</b> CODE: <span></span> Placement: BODY AND SLEEVES Supplier: UNAVAILABLE		-  Undefined Price: 0.00
2	<b>IN DEV</b> CODE: <span>TBD</span> Placement: COLLAR, CF PLACKET, SLEEVE CUFFS Notes: 1X1 RIB, DOUBLED; PLS ADVISE ART. #; COLOR = RED		- IN DEV Price: 0.00
3	<b>UA-02PT</b> CODE: <span>UA Sport Poly Neck Tape</span> Placement: CB NECK INTERIOR Supplier: UNAVAILABLE		-  Undefined Price: 0.00
4	<b>ARTWORK</b> CODE: <span>AS CORRESPONDING FILE</span> Placement: ALL OVER PRINT Notes: FOLLOW ARTWORK FILE AND POM Supplier: Factory Sourced		- ARTWORK Price: 0.00
5	<b>ARTWORK</b> CODE: <span>AS CORRESPONDING FILE</span> Placement: CF CHEST Notes: FOLLOW ARTWORK FILE AND POM Supplier: Factory Sourced		- ARTWORK Price: 0.00
LABEL AND TRIM PACKAGE			
6	<b>ALD Woven Main Label W/ Size</b> CODE: <span>ALD-ML03</span> Placement: CB NECK INTERIOR Notes: FOLLOW POM Supplier: Colonial Country of Origin: CHINA	1 Piece	- ALD Woven Main Label W/ Size Price: 0.079
Components 6			Total 0.079