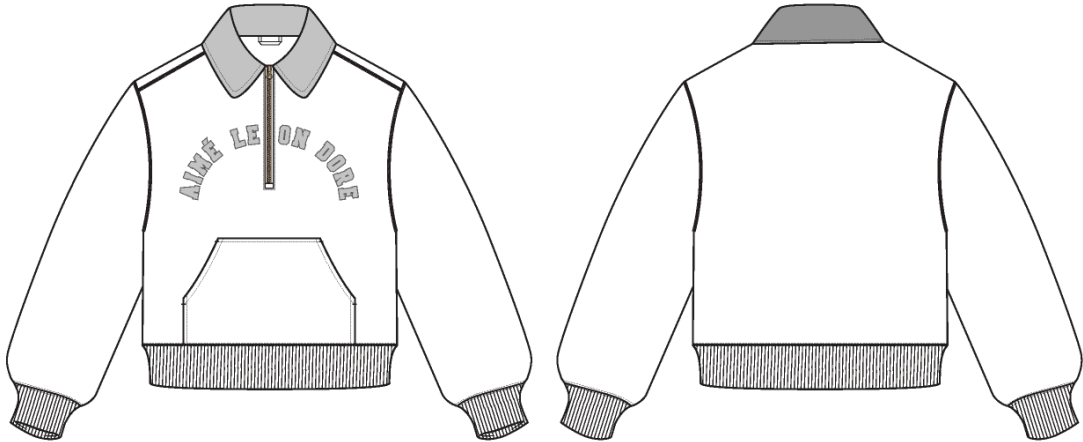


Aimé Sport Quarter Zip

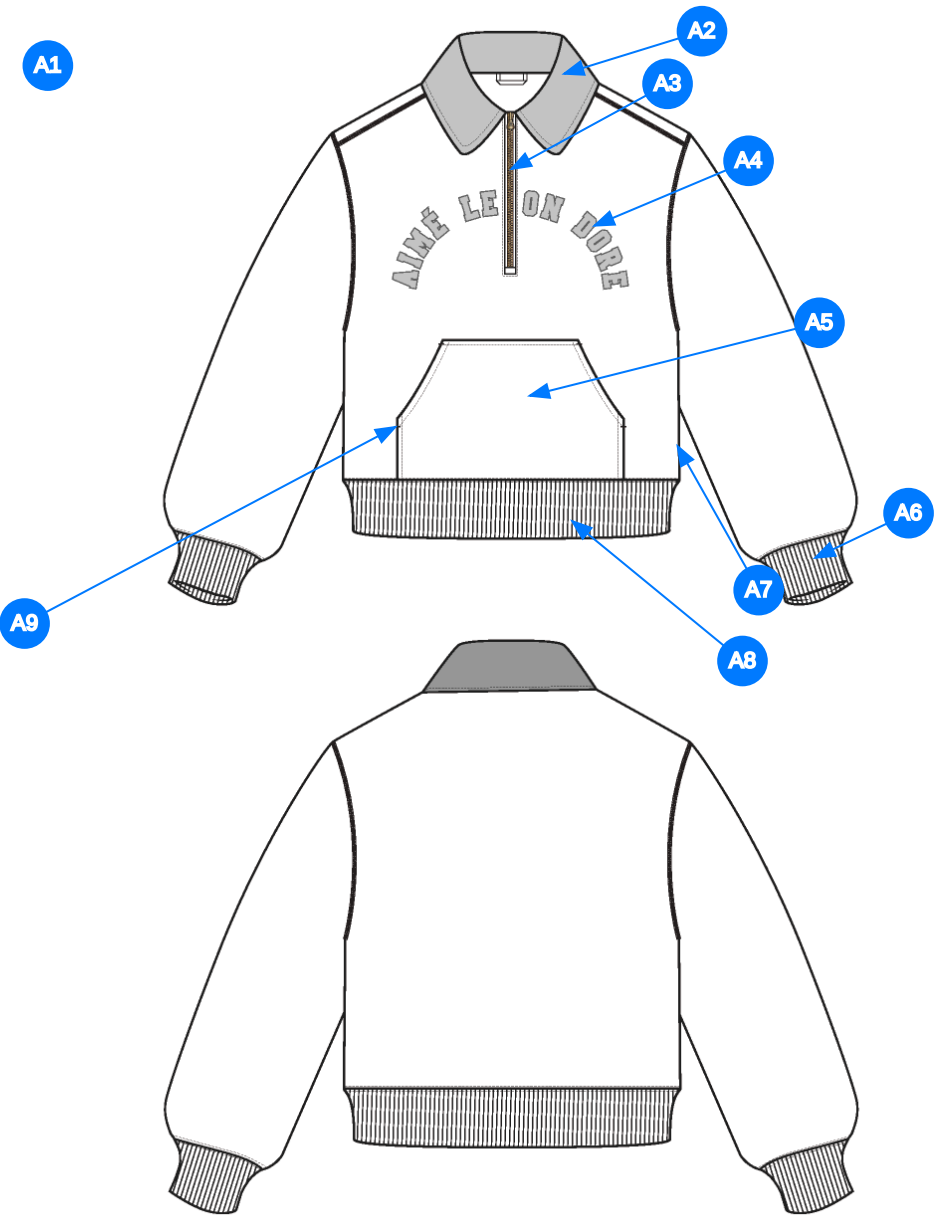
Name	Aimé Sport Quarter Zip
Style No.	SS26CS001
Division	Mens
Category	Sweatshirts
Season	Spring/Summer
Year	2026
Size Scale	<div>M</div> -Sample size <div><div>XS</div><div>S</div><div>M</div><div>L</div><div>XL</div><div>XXL</div></div>
Style Status	Adopted
Factory	UN-AVAILABLE
Designer Name	Wes
TD Name	Anastasiya
Created by/Author	6/27/2025 Anastasiya Zolotova anastasiya.zolotova@aimeleondore.com



1_B&W-1



2_CLR-1

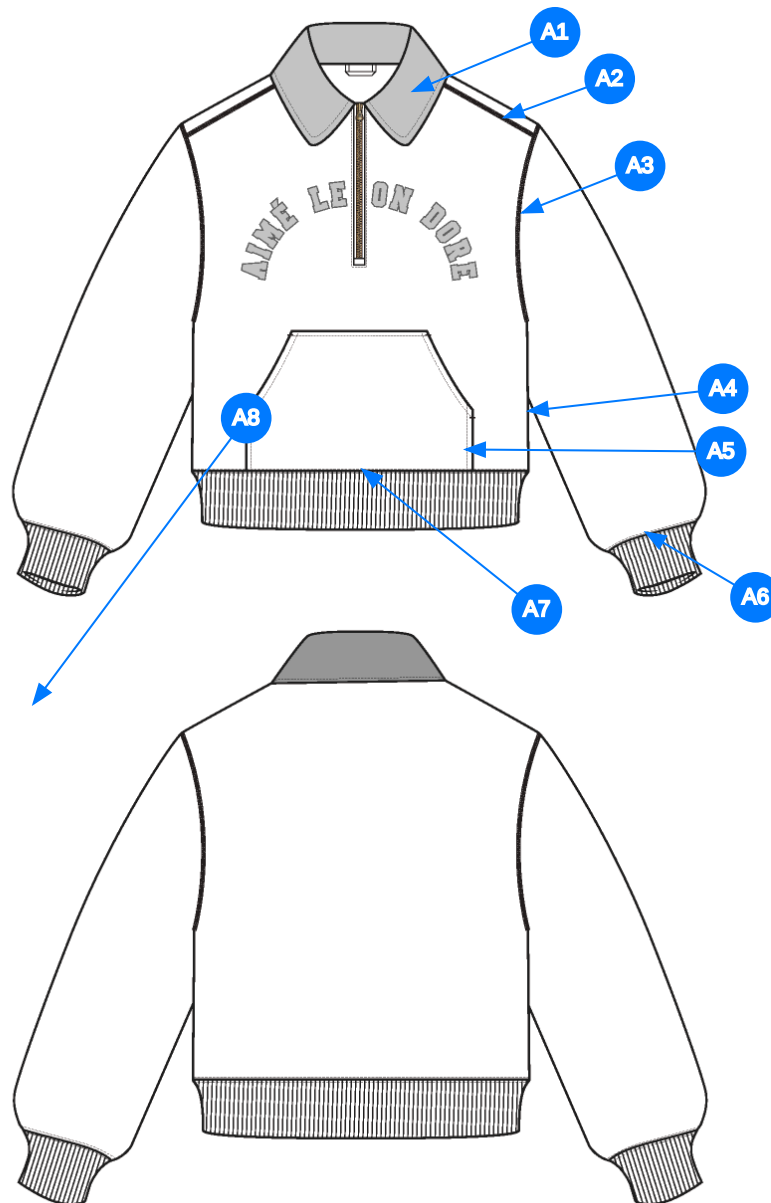


Comments (9)

- A1 FIT: METS VARSITY QUARTER ZIP (SS25CS020)
- A2 2X2 RIB DOUBLED @ COLLAR
- A3 ZIPPER CLOSURE @ CF
- A4 ARTWORK @ CF CHEST
- A5 KANGAROO POCKET @ FRONT BODY
- A6 2X2 RIB DOUBLED @ SLEEVE CUFF
- A7 ALD WOVEN LABEL @ SIDE SEAM
- A8 2X2 RIB DOUBLED @ BOTTOM HEM
- A9 BAR TACKS @ POCKET OPENINGS

- 1. fit tham khảo SS25CS020
- 2. rib 2x2 2 lớp tại lá cổ
- 3. dây kéo tại giữa trước
- 4. artwork tại giữa ngực
- 5. túi kangaroo tại giữa trước
- 6. rib 2x2 2 lớp tại lai tay
- 7. nhãn cò tại sườn ngoài
- 8. rib 2x2 tại lai áo
- 9. bộ tại miệng túi

3_Construction Details-1



Comments (8)

- A1** 1/4" SNTS @ COLLAR
- A2** STRADDLE STITCH @ SHOULDER SEAM
- A3** STRADDLE STITCH @ ARMHOLE
- A4** CLEAN SEAM @ SIDE SEAM
- A5** SNES @ KANGAROO POCKET
- A6** DOUBLE NEEDLE STRADDLE @ SLEEVE CUFF
- A7** OUBLE NEEDLE STRADDLE @ BOTTOM HEM
- A8** BAR TACKS @ POCKET OPENINGS

1. điều 1 kim 1/4" tại lá cổ
2. điều rẽ tại đường may vai
3. điều rẽ tại nách
4. may sạch tại đường may sườn
5. mí điều 1 kim tại túi kangaroo
6. điều rẽ 2 kim tại lai tay
7. điều rẽ 2 kim tại lai áo
8. bọ tại miệng túi

4_Stitching Details-1

Measured Size: M

POINT OF MEASURE	HOW TO MEASURE	CRITICAL	TYPE	TOLERANCE	EXPECTED	1ST PROTO - RCVD	VARIANCE	ADJUST BY +/-	REVISED SPEC	MEASUREMENT NOTES
Front Body Length	HPS to bottom edge	true	Full	1/2 in	26 3/4 in	27 3/8 in	5/8 in	0 in	26 3/4 in	Back to Spec
Back Body Length	CB neck seam to bottom edge	true	Full	1/2 in	26 in	26 5/8 in	5/8 in	0 in	26 in	Back to Spec
Front Neck Drop	HPS to neck seam	false	Full	1/8 in	3 3/4 in	4 1/4 in	1/2 in	1/4 in	4 in	Follow Revised
Back Neck Drop	HPS to neck seam	false	Full	1/8 in	3/4 in	7/8 in	1/8 in	0 in	3/4 in	
Back Neck Width	Seam to seam at back neck, at HPS point	false	Full	1/4 in	7 in	7 in	0 in	0 in	7 in	
CF Zipper Length		false	Full	1/4 in	9 in	9 in	0 in	0 in	9 in	
Shoulder Slope	Shoulder point perpendicular to HPS	false	Full	1/4 in	2 in	2 1/4 in	1/4 in	0 in	2 in	
Across Shoulder	Seam to seam	false	Half	1/4 in	21 1/2 in	21 3/4 in	1/4 in	0 in	21 1/2 in	
Across Front/Across Back Position from HPS		true	Full	0 in	7 in	7 in	0 in	0 in	7 in	
Across Front	7" dwn from HPS, Seam to seam	false	Half	1/4 in	19 in	19 1/8 in	1/8 in	0 in	19 in	
Across Back	7" dwn from HPS, Seam to Seam	false	Half	1/4 in	20 in	19 7/8 in	-1/8 in	0 in	20 in	
Chest Width	1" Below armhole- edge to edge	true	Half	1/4 in	23 in	23 in	0 in	0 in	23 in	
Bottom Opening Width- Along Seam Relaxed		true	Half	1/4 in	20 in	19 in	-1 in	0 in	20 in	Back to Spec
Bottom Opening Width- At Edge	At bottom edge	true	Half	1/4 in	17 1/2 in	17 1/8 in	-3/8 in	0 in	17 1/2 in	Back to Spec
Bottom Hem Height	Bottom edge to stitch line or trim seam	false	Full	1/8 in	2 3/4 in	3 in	1/4 in	0 in	2 3/4 in	Back to Spec
Sleeve Length from CB Neck	3-point measure from CB Neck to shoulder point to sleeve edge	true	Full	1/2 in	35 in	35 1/4 in	1/4 in	0 in	35 in	
Armhole Drop	Below HPS - measure perpendicular	false	Full	1/4 in	12 in	12 1/4 in	1/4 in	0 in	12 in	
Bicep Width	1" below armhole- edge to edge	false	Half	1/4 in	9 1/2 in	9 3/8 in	-1/8 in	0 in	9 1/2 in	
Forearm Width	9" up from sleeve cuff edge	false	Half	1/4 in	7 1/2 in	6 7/8 in	-5/8 in	0 in	7 1/2 in	Back to Spec
Sleeve Opening Width- At Seam	Width at Seam	false	Half	1/4 in	5 in	4 in	-1 in	0 in	5 in	Back to Spec
Sleeve Opening Width- At Edge	At edge	false	Half	1/4 in	3 3/4 in	3 3/4 in	0 in	0 in	3 3/4 in	
Sleeve Cuff Height	Cuff edge to seam	false	Full	1/8 in	2 3/4 in	2 7/8 in	1/8 in	0 in	2 3/4 in	
Collar Height at CB	Neck seam to collar edge at CB	false	Full	1/8 in	3 1/4 in	3 1/4 in	0 in	1/4 in	3 1/2 in	Increase
Collar Point Length	Neck seam to collar point, along edge	false	Full	1/8 in	2 3/4 in	2 3/4 in	0 in	1/4 in	3 in	Increase
Kangaroo Pocket Height At Center	Height at center	false	Full	1/4 in	9 3/4 in	9 7/8 in	1/8 in	-3/4 in	9 in	Reduce
Kangaroo Pocket Width at Top Edge	Width at top edge	false	Full	1/4 in	9 in	8 3/4 in	-1/4 in	0 in	9 in	
Kangaroo Pocket Width at Bottom	Width at Bottom Edge	false	Full	1/4 in	13 in	12 1/4 in	-3/4 in	-3/4 in	12 1/4 in	Keep As Sample
Kangaroo Pocket Opening		false	Full	1/8 in	6 1/2 in	6 1/2 in	0 in	0 in	6 1/2 in	
CF Artwork Placement below CF Neckline	From CF Neck Seam to Top Edge of Artwork	false	Full	1/8 in	2 1/2 in	0 in	0 in	1 1/2 in	4 in	Follow Revised
Loop Label Placement at Sideseam	Bottom edge to bottom of loop label, at the WL side seam	false	Full	1/8 in	7 in	7 in	0 in	0 in	7 in	

1st Proto - Anastasiya Zolotova

CREATED ON JUN 25, 2025 8:22 PM
1ST PROTO: SIZE:M, CREATED AT: 06-13-2025

SS26CS001 Aimé Sport Quarter Zip
FITTING DATE: 6/17/25
MODEL/ATTENDEES: Jessica, Cal, Anthony, Wes, Jeni, Anastasiya, Sarah
STATUS: 1st Proto Approved to 1st Fit

Fit Comments:

- 1. Front body length came in +5/8", go back to spec.
- 2. Back body length came in +5/8, go back to spec.
- 3. Follow revised front neck drop of 4".
- 4. Bottom opening width at seam relaxed is -1", go back to spec.
- 5. Bottom opening width at rib edge is -3/8", go back to spec.
- 6. Bottom rib height is +1/4", go back to spec.
- 7. Forearm width is -5/8", go back to spec.
- 8. Sleeve opening width at seam is -1", go back to spec.
- 9. Increase collar height to 3 1/2" at CB.
- 10. Increase collar point to 3".
- 11. Reduce pocket height to 9"
- 12. Keep pocket width at bottom at 12 1/4".
- 13. Move bottom pocket opening corner out 1/4" towards side seam, keeping bottom width the same
- 14. Follow revised CF artwork placement of 4" from CF neck seam to top edge of artwork.

Construction:

- 1. Remove self hanger loop at back neck
- 2. Add double needle straddle to sleeve opening and bottom opening
- 3. Add bar tacks to all pocket opening corners.

- 1. dài áo thân trước dư 5/8", điều chỉnh thông số trong dung sai
 - 2. dài áo thân sau dư 5/8", điều chỉnh thông số trong dung sai
 - 3. thay đổi thông số hạ cổ trước 4"
 - 4. rộng lai áo tại đường may đo êm -1", điều chỉnh thông số trong dung sai
 - 5. rộng lai áo tại mép rib -3/8", điều chỉnh thông số trong dung sai
 - 6. to bản lai áo dư +1/4", điều chỉnh thông số trong dung sai
 - 7. rộng cẳng tay -5/8", điều chỉnh thông số trong dung sai
 - 8. rộng lai tay tại đường may -1", điều chỉnh thông số trong dung sai
 - 9. tăng to bản lá cổ 3 1/2" tại giữa sau
 - 10. tăng điểm cổ 3"
 - 11. giảm cao túi 9"
 - 12. giữ rộng túi tại lai 12 1/4"
 - 13. Di chuyển góc miệng túi dưới ra ngoài 1/4" về phía đường may bên, giữ nguyên chiều cạnh dưới.
 - 14. thay đổi vị trí artwork giữa ngực 4" từ giữa đường may cổ đến đỉnh artwork
- cấu trúc:
- 1. bỏ dây treo tại giữa cổ sau
 - 2. thêm dấu rẽ 2 kim tại lai tay và lai áo
 - 3. thêm bộ tại tất cả các góc miệng túi



Screen Shot 2025-06-23 at 7.34.21 PM.jpg