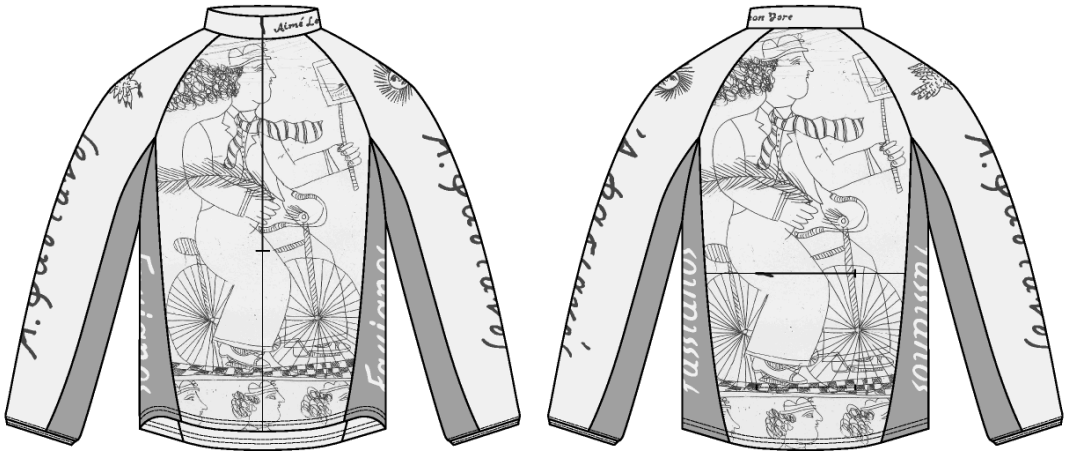
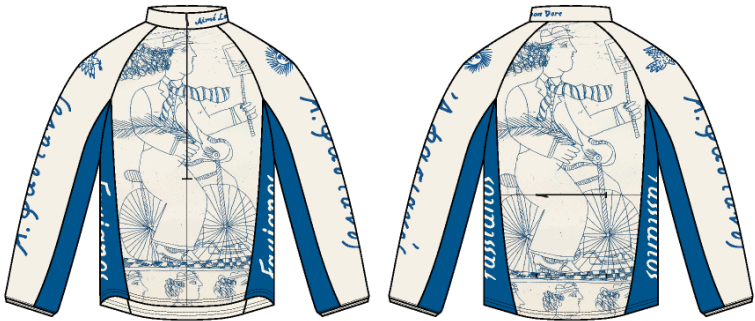


Alekos Poly Cycling Jersey

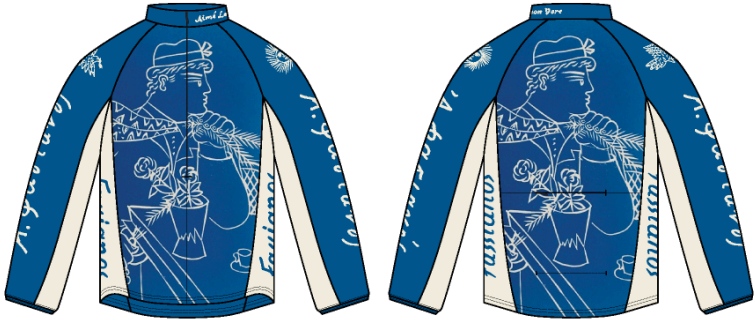
Name	Alekos Poly Cycling Jersey
Style No.	SS26CT068
Division	Mens
Category	Tees
Season	Spring/Summer
Year	2026
Size Scale	<div>M</div> -Sample size <div>XS</div> <div>S</div> <div>M</div> <div>L</div> <div>XL</div> <div>XXL</div>
Style Status	Adopted
Factory	UN-AVAILABLE
Designer Name	Wes
TD Name	Anastasiya
Created by/Author	7/9/2025 Anastasiya Zolotova anastasiya.zolotova@aimeleondore.com



1_B&W-1

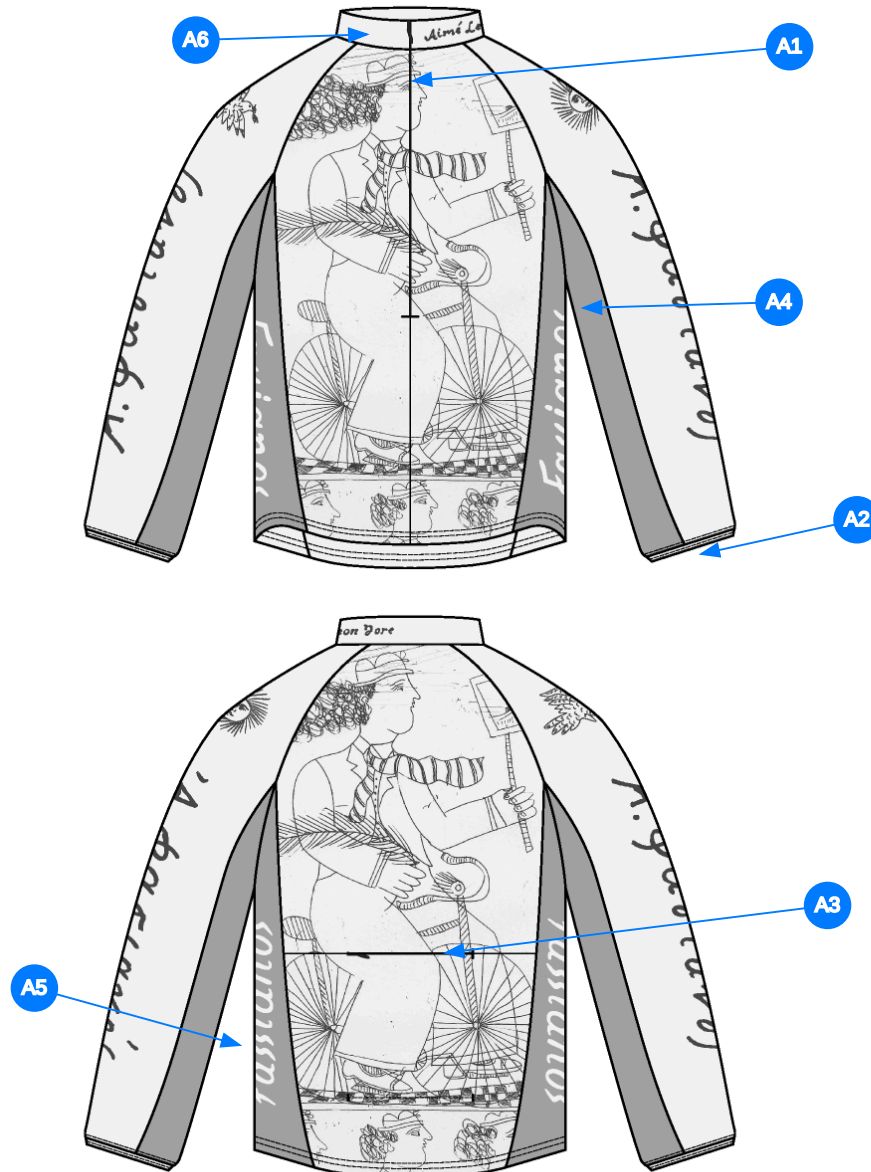


COCONUT MILK



SKY DIVER

2_CLR-1

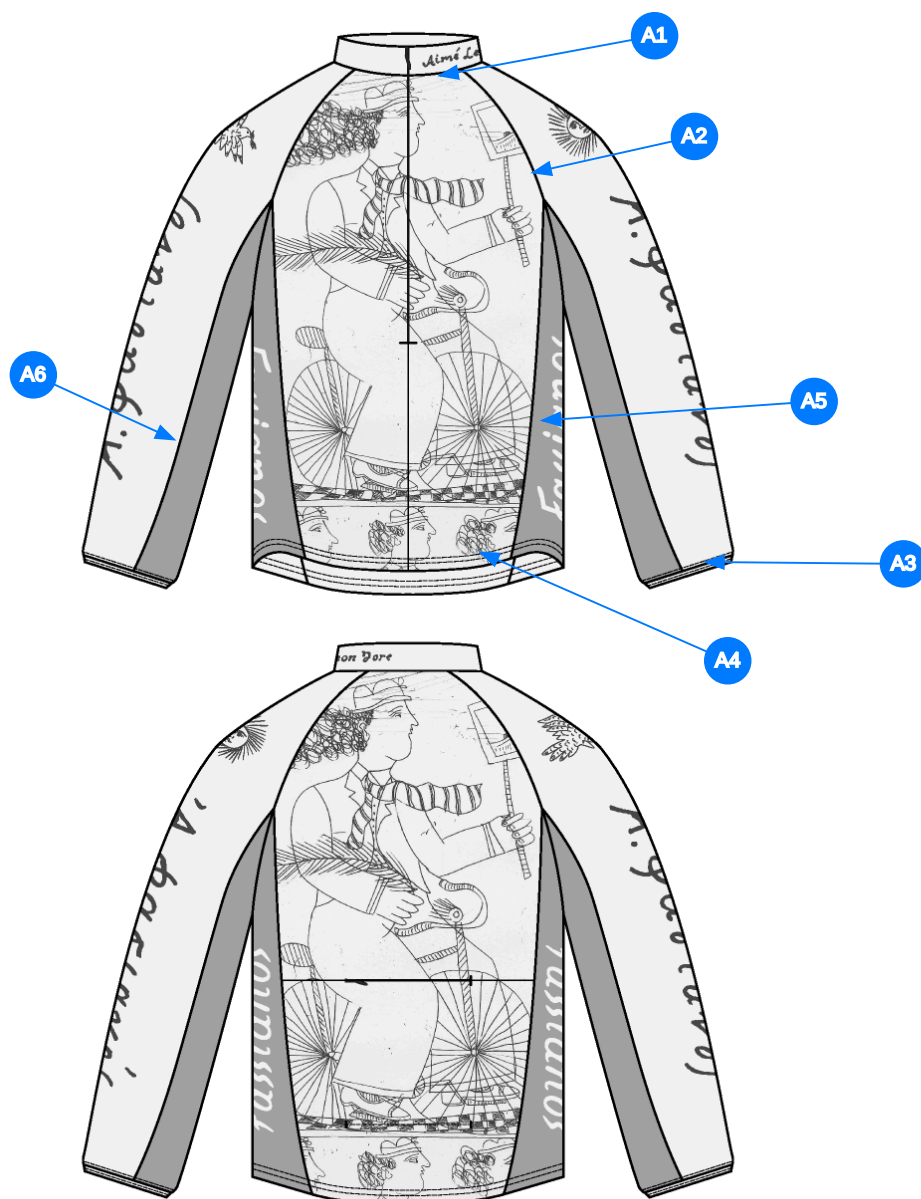


3_CONSTRUCTION DETAILS-1

Comments (6)

- A1** INVISIBLE ZIPPER @ CF
- A2** SELF TURNBACK W/ ELASTIC ENCASED
- A3** INVISIBLE ZIPPER @ BACK POCKET
- A4** SET IN MESH PANEL @ SLEEVE
- A5** SET IN MESH PANEL @ SIDE PANEL
- A6** SELF COLLAR ON FOLD

1. dây kéo ẩn tại giữa trước
2. lai tay gấp đôi bằng vải chính với thun bên trong
3. dây kéo ẩn tại túi sau
4. phối vải mesh tại tay
5. phối vải mesh tại sườn
6. cổ bằng vải chính



4_STITCHING DETAILS-1

Comments (6)

- A1** - SNES @ NECK BODY SIDE - CLEAN FINISH NECK W/COLLAR - ADD SELF BIB FACING TO HIDE THE ZIPPER TAPE
- A2** CLEAN SEAM FINISH @ RAGLAN SEAM
- A3** TURNBACK @ SLEEVE CUFF - 1/8" DN COVERSTITCH
- A4** TURNBACK HEM @ BOTTOM OPENING - 1/4" DN COVERSTITCH
- A5** CLEAN SEAM FINISH @ SIDE PANEL
- A6** CLEAN SEAM FINISH @ SLEEVE PANELING

1. mí diều tại đường may cổ bên thân áo - may sạch đường may lá cổ - thêm nẹp bằng vải chính để che dây kéo
2. may sạch tại đường may raglan
3. lai tay gấp đôi diều 2 kim 1/8"
4. lai áo gấp đôi diều 2 kim 1/4"
5. may sạch tại phối sườn
6. may sạch tại phối tay

Measured Size: M

POINT OF MEASURE	HOW TO MEASURE	CRITICAL	TYPE	TOLERANCE	EXPECTED	1ST PROTO - RCVD	VARIANCE	ADJUST BY +/-	REVISED SPEC	MEASUREMENT NOTES
Front Body Length	HPS to bottom edge	true	Full	1/4 in	26 1/2 in	26 1/4 in	-1/4 in	-1/4 in	26 1/4 in	Keep As Sample
Back Body Length	CB neck seam to bottom edge	true	Full	1/4 in	26 1/4 in	26 1/4 in	0 in	-3/4 in	25 1/2 in	Follow Revised
Shirt Tail Height		true	Full	1/8 in	0 in	1/2 in	1/2 in	1 1/2 in	1 1/2 in	Increase
Front Neck Drop	HPS to neck seam	false	Full	1/8 in	3 1/4 in	2 3/4 in	-1/2 in	0 in	3 1/4 in	Back to Spec
Back Neck Drop	HPS to neck seam	false	Full	1/8 in	3/4 in	3/4 in	0 in	0 in	3/4 in	
Back Neck Width	Seam to seam at back neck, at HPS point	false	Full	1/4 in	7 in	7 1/4 in	1/4 in	0 in	7 in	
Raglan Shoulder Slope	9 1/2" out from CB, at HPS line	false	Full	1/8 in	1 3/4 in	1 3/4 in	0 in	0 in	1 3/4 in	
Front Raglan Seam Placement at Neck	HPS to raglan seam along the neckline	false	Full	1/8 in	3 in	2 in	-1 in	-1 in	2 in	Keep As Sample
Back Raglan Seam Placement at Neck	HPS to raglan seam along neckline	false	Full	1/8 in	2 1/2 in	2 1/4 in	-1/4 in	-1/2 in	2 in	Follow Revised
CF Zipper Opening Length	From neck to bottom edge	false	Full	1/4 in	12 in	12 3/8 in	3/8 in	0 in	12 in	Back to Spec
Neck Trim Height @ CB	Neck Seam to trim edge (before folded)	false	Full	1/8 in	1 3/4 in	1 5/8 in	-1/8 in	-1/4 in	1 1/2 in	Follow Revised
Across Front/Across Back Position from HPS		true	Full	0 in	7 in	7 in	0 in	0 in	7 in	
Across Front	Down from HPS, Seam to seam	false	Half	1/4 in	13 1/2 in	14 in	1/2 in	-1 in	12 1/2 in	Follow Revised
Across Back	Down from HPS, Seam to Seam	false	Half	1/4 in	14 in	14 1/4 in	1/4 in	-1 in	13 in	Follow Revised
Chest Width	1" Below armhole- edge to edge	true	Half	1/4 in	23 in	23 in	0 in	-2 1/2 in	20 1/2 in	Reduce
Bottom Opening Width- At Edge	At bottom edge	true	Half	1/4 in	23 in	23 in	0 in	-2 1/2 in	20 1/2 in	Reduce
Bottom Hem Height	Bottom edge to stitch line or trim seam	false	Full	1/8 in	3/4 in	3/4 in	0 in	0 in	3/4 in	
Sleeve Length from CB Neck	3-point measure from CB Neck to shoulder point to sleeve edge	true	Full	1/2 in	34 in	34 1/2 in	1/2 in	0 in	34 in	
Armhole Drop	Below HPS - measure perpendicular	false	Full	1/4 in	11 3/4 in	11 1/4 in	-1/2 in	-3/4 in	11 in	Reduce
Bicep Width	1" below armhole- edge to edge	false	Half	1/4 in	8 1/4 in	9 1/2 in	1 1/4 in	0 in	8 1/4 in	Backt o Spec
Forearm Width	9" up from sleeve edge	false	Full	1/4 in	6 1/2 in	6 1/2 in	0 in	0 in	6 1/2 in	
Sleeve Opening Relaxed		false	Half	1/4 in	4 3/4 in	0 in	0 in	-1/2 in	4 1/4 in	Follow Revised
Sleeve Opening Extended		false	Half	1/4 in	3 3/8 in	0 in	0 in	1 5/8 in	5 in	Follow Revised
Cuff Height		false	Full	1/8 in	2 1/2 in	0 in	0 in	-2 in	1/2 in	Follow Revised
Back Pocket Zipper Length		true	Full	1/8 in	6 in	6 in	0 in	1 in	7 in	Increase
Back Pocket Zipper Placement Above Hem Edge		true	Full	1/8 in	8 in	7 1/2 in	-1/2 in	-1/2 in	7 1/2 in	Keep As Sample
Back Pocket Zipper Center on Back Body Panel		true	Full	1/8 in	0 in	0 in	0 in	0 in	0 in	
Artwork @ Side Panel Centered on Fold		true	Full	1/8 in	0 in	0 in	0 in	0 in	0 in	
Artwork @ Side Panel Placement from Hem Edge		true	Full	1/8 in	3 in	3 in	0 in	0 in	3 in	
Artwork @ Sleeve Centered on Sleeve Fold		true	Full	1/8 in	0 in	0 in	0 in	0 in	0 in	
Artwork @ Sleeve Placement from Neck Seam		true	Full	1/8 in	8 in	8 in	0 in	-4 in	4 in	Follow Revised
Artwork @ WL Collar Centered on Collar Height		true	Full	1/8 in	0 in	0 in	0 in	0 in	0 in	
Artwork @ WL Collar Centered on NHPS		true	Full	1/8 in	0 in	0 in	0 in	0 in	0 in	
Side Panel Width		true	Full	1/8 in	0 in	6 1/2 in	6 1/2 in	5 in	5 in	Reduce

1st Proto - Anastasiya Zolotova

CREATED ON JUL 9, 2025 9:54 PM

1ST PROTO: SIZE:M, CREATED AT: 07-07-2025

SS26CT068 Alekos Poly Cycling Jersey

FITTING DATE: 7/8/25**MODEL/ATTENDEES:** Jessica, Anthony, Wes, Jeni, Anastasiya, Sarah**STATUS:** 1st Proto Approved to 1st Fit**Fit Comments:**

1. Keep front body length as sample at 26 1/4".
2. Keep hem leveled follow revised back body length of 25 1/2".
3. Increase shirt tail height to 1 1/2".
4. Front neck drop came in -1/2", go back to spec.
5. Keep front raglan position as sample at 2".
6. Follow revised back raglan placement at 2".
7. Reduce across front to 12 1/2".
8. Reduce across back to 13".
9. Reduce chest to 20 1/2".
10. Reduce bottom opening to 20 1/2"
11. Reduce armhole drop to 11".
12. Bicep go back to spec to 8 1/4", sample came in +1 1/4".
13. Since changing sleeve opening to elasticated opening follow revised opening relaxed of 4 1/4"
14. Follow opening extended of 5".
15. Follow turn back height of 1/2".
16. Increase back zipper pocket opening to 7".
17. Keep back pocket placement as sample at 7 1/2" from hem edge.
18. Follow revise sleeve artwork placement to be 4" from neck
19. Reduce side panel to 5"(total)
20. Increase mesh sleeve panel at armhole to 4 1/4" (one side)
21. Keep mesh sleeve panel at sleeve opening at 3" (one side) as sample.

Construction:

1. Change body side panel to mesh fabrication
2. Change back pocket zipper to invisible, add horizontal seam to accommodate invisible zipper.
3. Change sleeve opening to elasticated opening. Turnback construction with elastic inside.

fit comment:

1. giữ dài áo thân trước như mẫu 26 1/4"
2. giữ lai áo phẳng đều, thay đổi dài áo thân sau 25 1/2"
3. tăng cao shirt tail 1 1/2"
4. hạ cổ trước -1/2", điều chỉnh thông số trong dung sai
5. giữ vị trí raglan trước như mẫu 2"
6. thay đổi vị trí raglan sau 2"
7. giảm ngang thân trước 12 1/2"
8. giảm ngang thân sau 13"
9. giảm rộng ngực 20 1/2"
10. giảm rộng lai 20 1/2"
11. giảm hạ nách 11"
12. điều chỉnh bắp tay trong dung sai thông số 8 1/4", mẫu dư 1 1/4"
13. thay đổi miệng lai tay bằng thun, lai tay đo êm 4 1/4"
14. lai tay đo căng 5"
15. gập lai tay 1/2"
16. tăng dài dây kéo túi sau 7"
17. giữ vị trí túi sau như mẫu 7 1/2" từ mép lai
18. thay đổi định vị hình in tại tay 4" từ cổ
19. giảm rộng phối sườn 5"
20. tăng btp phối lưới tay tại nách 4 1/4" (1 bên)
21. giữ btp phối lưới tay tại lai tay 3" (1 bên) như mẫu

cấu trúc

- 1.thay đổi phối thành vải lưới
2. thay đổi dây kéo ẩn túi sau, thêm đường may ngang dây kéo ẩn
3. thay đổi lai tay bằng vải chính gập lại thun bên trong

4. Zipper won't close because it gets stuck at neck seam
 - a. Reduce seam allowance at neck+collar interior.
 - b. Move zipper 1/16" farther from edge
5. Changing side panels to mesh.
6. Eliminate small set in panels @underarm and sleeve, see image.
7. Clean finish neck with collar so interior seam allowance is not visible.

4. dây kéo không khóa được vì bị kẹt ở đường may cổ
 - a. giảm đường may bên trong cổ và cổ áo
 - b. dời dây kéo ra xa mép 1/16"
5. thay đổi phối bằng vải lưới
6. bỏ các phối nhỏ ở nách dưới và tay, xem hình
7. may sạch đường may cổ để đường may bên trong không bị lộ

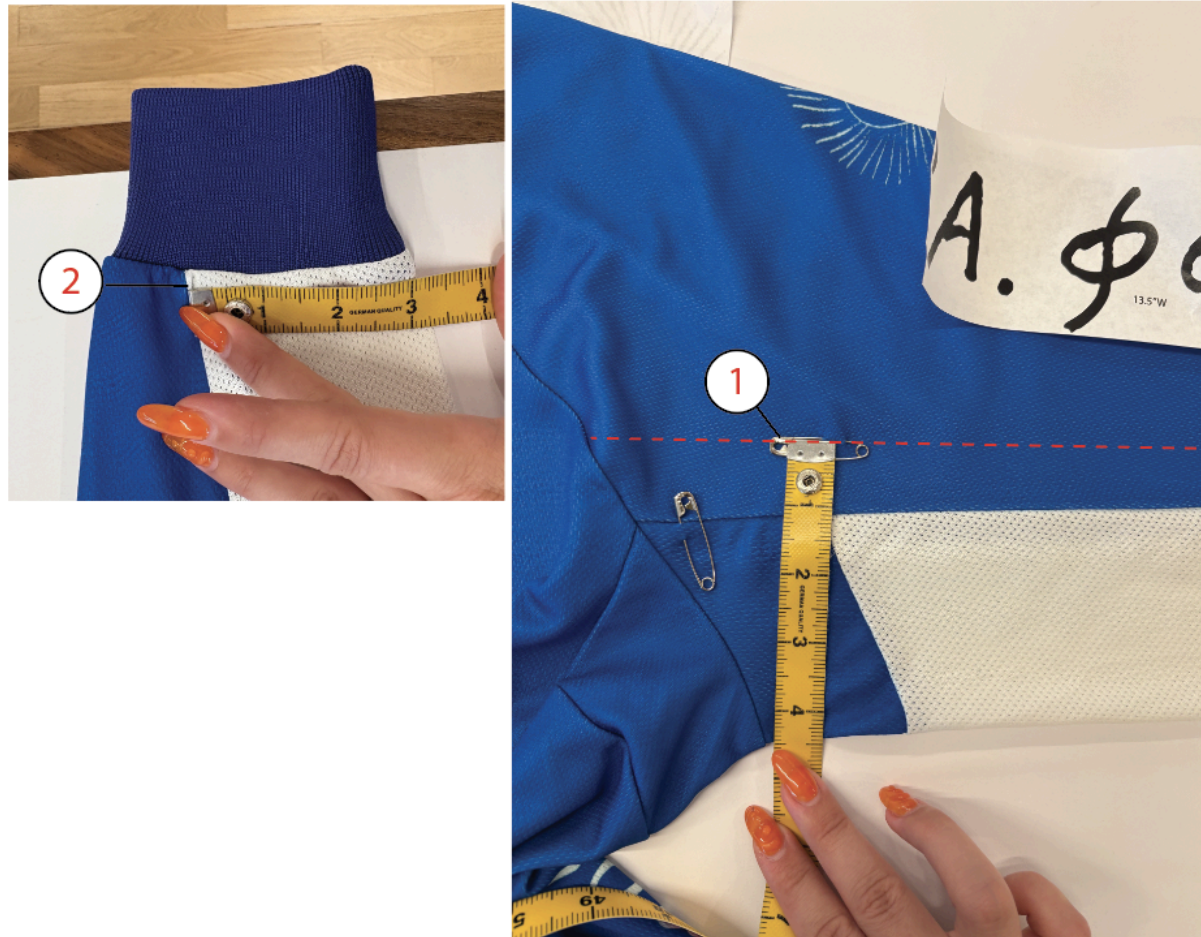


Screen Shot 2025-07-09 at 11.37.57 AM.jpg

1. tăng phối lưới tại nách 4 1/4" (1 bên)
2. giữ phối lưới tại lai tay 3" (1 bên) như mẫu

SS26CT068 Alekos Poly Cycling Jersey

1. Increase mesh sleeve panel at armhole to 4 1/4" (one side)
2. Keep mesh sleeve panel at sleeve opening at 3" (one side) as sample.

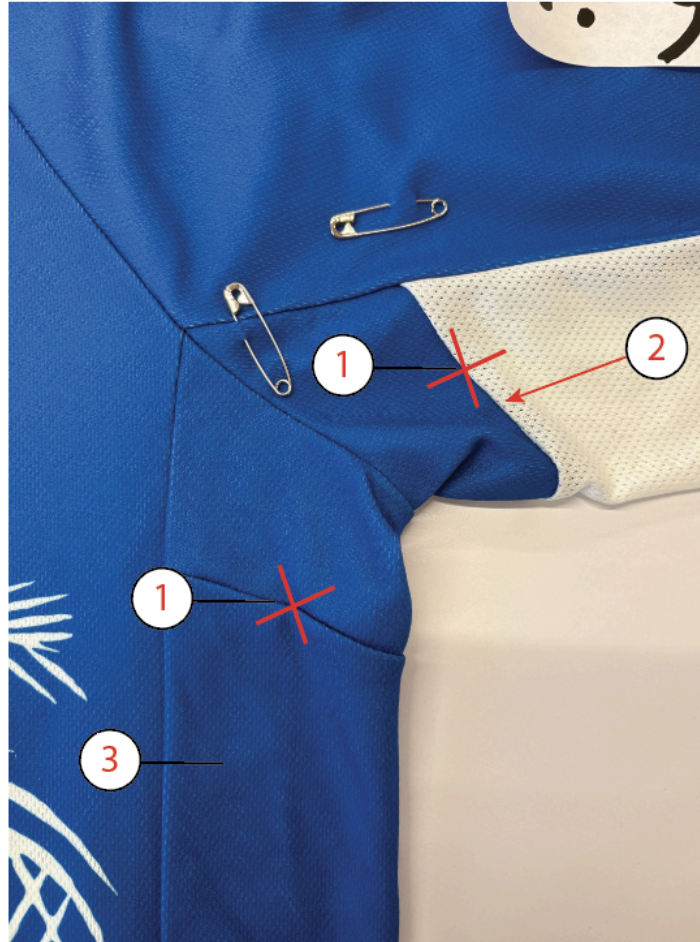


Screen Shot 2025-07-09 at 5.58.00 PM.jpg

1. bỏ các btp phối dưới nách và tay như mẫu
2. phối lưới tại raglan tay
3. thay đổi phối sườn bằng vải lưới

SS26CT068 Alekos Poly Cycling Jersey

1. Eliminate small set in panels @underarm and sleeve.
2. Extend mesh panel at sleeve to raglan
3. Change side panel to mesh



Screen Shot 2025-07-09 at 6.00.17 PM.jpg

- dây kéo không đóng được vì bị kẹt ở đường may cổ
- 1. giảm đường may tại cổ và bên trong cổ
- 2. dời dây kéo 1/16" từ mép

SS26CT068 Alekos Poly Cycling Jersey

- Zipper won't close because it gets stuck at neck seam
- 1. Reduce seam allowance at neck+collar interior.
- 2. Move zipper 1/16" farther from edge



Screen Shot 2025-07-09 at 6.01.20 PM.jpg