

Baseball Jersey

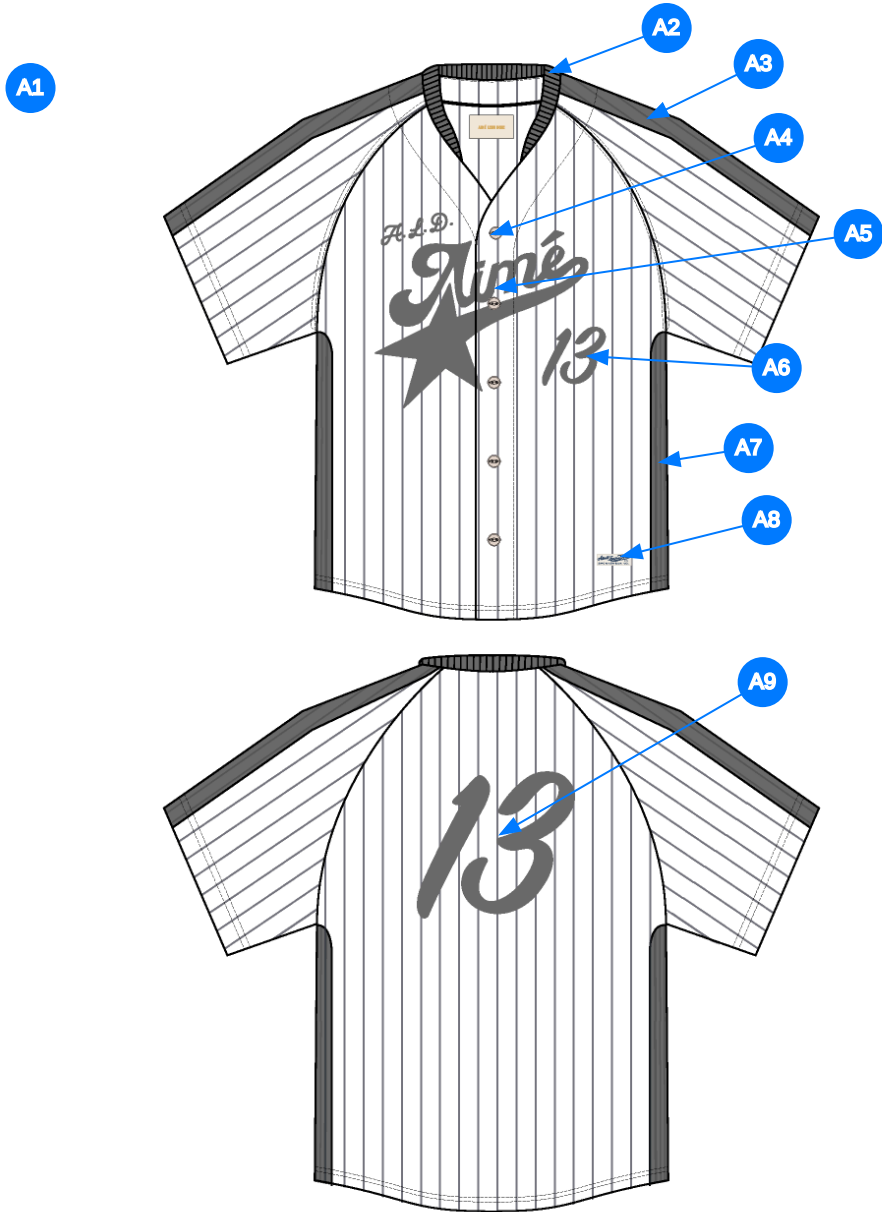
Name	Baseball Jersey
Style No.	SS26CT015
Division	Mens
Category	Tees
Season	Spring/Summer
Year	2026
Size Scale	<div>M</div> -Sample size <div><div>XS</div><div>S</div><div>M</div><div>L</div><div>XL</div><div>XXL</div></div>
Style Status	Adopted
Factory	UN-AVAILABLE
Designer Name	Wes
TD Name	Anastasiya
Created by/Author	7/7/2025 Anastasiya Zolotova anastasiya.zolotova@aimeleondore.com



1_B&W-1



2_CLR-1

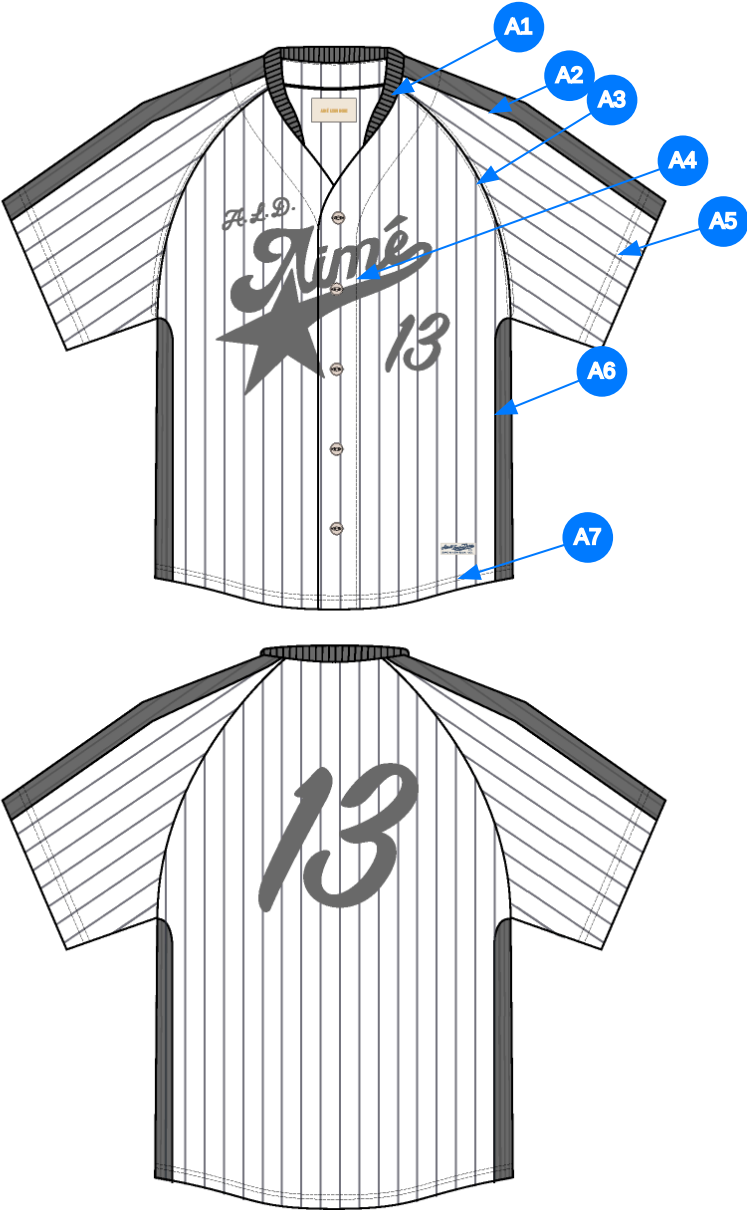


Comments (9)

- A1** FIT: SEE ATTACHED REFERENCE
- A2** 1X1 RIB DOUBLED @ COLLAR
- A3** TOP APPLIED DROP NEEDLE PANELING @ SHOULDER
- A4** BUTTON CLOSURE @ CF - PLACKET FACING IN SELF
- A5** ARTWORK @ CF CHEST - SEE ADDITIONAL FILE FOR ARTWORK REFERENCE
- A6** ARTWORK @ CHEST - SEE ADDITIONAL FILE FOR ARTWORK DETAILS
- A7** TOP APPLIED DROP NEEDLE PANELING @ SIDE BODY
- A8** ALD SPORTSWEAR CO. LABEL @ WL BOTTOM HEM
- A9** ARTWORK @ CB - SEE ADDITIONAL FILE FOR ARTWORK DETAILS

- 1.Fit: tham khảo mẫu chuyển cùng tác nghiệp
- 2. rib 1x1 2 lớp tại cổ
- 3. miếng đắp tại vai
- 4. nút tại nẹp giữa
- 5. artwork tại giữa trước
- 6. artwork tại ngực trái
- 7. miếng đắp tại sườn
- 8. nhãn trang trí tại lai trái
- 9. artwork tại giữa sau

3_Construction Details-1



Comments (7)

- A1** 1/8" SN TS @ COLLAR
- A2** SN TS @ SHOULDER PANEL
- A3** STRADDLE STITCH @ ARMHOLE
- A4** SN TS @ PLACKET
- A5** 1/4" DN TS @ ARMHOLE
- A6** SN TS @ SIDE BODY PANEL
- A7** 1/4" DN TS @ BOTTOM HEM

- 1. điều 1 kim 1/8" tại cổ
- 2. điều 1 kim tại vai
- 3. điều rẽ tại nách
- 4. điều 1 kim tại nẹp
- 5. điều 2 kim 1/4" tại nách
- 6. điều 1 kim tại sườn
- 7. điều 2 kim 1/4" tại lai áo

4_Stitching Details-1

Measured Size: M

POINT OF MEASURE	HOW TO MEASURE	CRITICAL	TYPE	TOLERANCE	EXPECTED	1ST PROTO - RCVD	VARIANCE	ADJUST BY +/-	REVISED SPEC	MEASUREMENT NOTES
Front Body Length	HPS to bottom edge	true	Full	1/2 in	29 in	29 1/2 in	1/2 in	0 in	29 in	
Back Body Length	CB neck seam to bottom edge	true	Full	1/2 in	28 1/2 in	28 3/4 in	1/4 in	0 in	28 1/2 in	
Side Panel Forward At Shoulder		true	Full	1/8 in	0 in	1 3/8 in	1 3/8 in	1 3/4 in	1 3/4 in	Bring Forward
Front Raglan Seam Placement at Neck	HPS to raglan seam along the neckline	false	Full	1/8 in	2 1/4 in	2 1/4 in	0 in	0 in	2 1/4 in	
Back Raglan Seam Placement at Neck	HPS to raglan seam along neckline	false	Full	1/8 in	1 1/4 in	1 1/4 in	0 in	0 in	1 1/4 in	
Raglan Shoulder Slope	9 1/2" out from CB, at HPS line	false	Full	1/8 in	0 in	0 in	0 in	0 in	0 in	
Front Neck Drop - To Top Edge/Break		false	Full	1/8 in	5 1/2 in	5 3/4 in	1/4 in	0 in	5 1/2 in	TO BREAK
Back Neck Drop	HPS to neck seam	false	Full	1/8 in	3/4 in	5/8 in	-1/8 in	0 in	3/4 in	
Back Neck Width	Seam to seam at back neck, at HPS point	false	Full	1/4 in	7 1/4 in	7 1/4 in	0 in	0 in	7 1/4 in	
Across Front	7" dwn from HPS, Seam to seam	false	Half	1/4 in	14 1/2 in	13 3/4 in	-3/4 in	-3/4 in	13 3/4 in	Keep As Sample
Across Back	7" dwn from HPS, Seam to Seam	false	Half	1/4 in	15 3/4 in	15 in	-3/4 in	-3/4 in	15 in	Keep As Sample
Chest Width	1" Below armhole- edge to edge	true	Half	1/4 in	24 in	23 1/4 in	-3/4 in	-1/2 in	23 1/2 in	Follow Revised
Bottom Opening Width- At Edge	At bottom edge	true	Half	1/4 in	24 in	23 1/2 in	-1/2 in	-1/2 in	23 1/2 in	Follow Revised
Bottom Hem Height	Bottom edge to stitch line or trim seam	false	Full	1/8 in	3/8 in	3/8 in	0 in	0 in	3/8 in	
Sleeve Length from CB Neck	3-point measure from CB Neck to shoulder point to sleeve edge	true	Full	3/8 in	19 in	18 3/4 in	-1/4 in	0 in	19 in	
Armhole Drop	Below HPS - measure perpendicular	false	Full	1/4 in	12 1/2 in	12 3/4 in	1/4 in	0 in	12 1/2 in	
Bicep Width	1" below armhole- edge to edge	false	Half	1/4 in	9 3/4 in	9 5/8 in	-1/8 in	0 in	9 3/4 in	
Sleeve Opening Width- At Edge	At edge	false	Half	1/4 in	8 1/2 in	8 1/4 in	-1/4 in	0 in	8 1/2 in	
Sleeve Hem Height		false	Full	1/8 in	1 in	1 in	0 in	0 in	1 in	
CF Placket Width	Width of placket edge to edge	false	Full	1/8 in	2 1/4 in	2 1/8 in	-1/8 in	-1/2 in	1 3/4 in	Reduce
1st Button Placement from CF Neck Edge to Button Center		false	Full	1/8 in	1 1/2 in	1 1/2 in	0 in	0 in	1 1/2 in	
Last Button Placement Up from Hem		false	Full	1/8 in	4 3/4 in	4 7/8 in	1/8 in	0 in	4 3/4 in	
Shirt Tail Height		true	Full	1/8 in	2 in	2 1/2 in	1/2 in	1/2 in	2 1/2 in	Keep As Sample
Top Applied Drop Needle Width	At Shoulder/Sleeve/Side Seam	true	Full	1/8 in	2 in	2 in	0 in	0 in	2 in	
Neck Trim Height	Neck Seam to trim edge (before folded)	false	Full	1/8 in	7/8 in	7/8 in	0 in	0 in	7/8 in	
CF Artwork Placement below Neck Top Edge		false	Full	1/8 in	2 in	0 in	0 in	-1/2 in	1 1/2 in	To Top Edge
CB Artwork Placement below CB Neck Seam	From CB Neck Seam to Top Edge of Artwork	false	Full	1/8 in	3 1/2 in	0 in	0 in	0 in	3 1/2 in	

1st Proto - Anastasiya Zolotova

CREATED ON JUL 3, 2025 9:15 PM

1ST PROTO: SIZE:M, CREATED AT: 06-27-2025

SS26CT015 Baseball Jersey

FITTING DATE: 6/30/25**MODEL/ATTENDEES:** Cal, Anthony, Wes, Jeni, Anastasiya, Hyeyoung**STATUS:** 1st Proto Approved to 1st Fit**Fit Comments:**

1. Side panel is 1 3/8" forward on 1st proto, revised to 1 3/4". See image.
2. Front neck drop came in +1/4", go back to spec. FND is measured to top edge of break. See image.
3. Extend the neck rib trim 1/2" closer to CF on both sides. See image.
4. Across front came in 13 3/4", keep as sample.
5. Across back came in 15", keep as sample.
6. Follow revised chest of 23 1/2".
7. Follow revised bottom opening of 23 1/2".
8. Reduce CF placket width/CF overlap to 1 3/4".
9. Please bring buttons 1/4" closer to CF edge. Button should measure 3/4" from CF edge to button center, see image.
10. Follow adjusted CF artwork placement.

Construction/Workmanship:

1. Rib was inserted and not top applied, please top apply rib panel on 1st fit.

1. rib may trên mẫu proto là tra không phải đắp, vui lòng may đắp trên mẫu fit

fit comment:

1. chồm phối vai 1 3/8" trên mẫu proto, thay đổi 1 3/4", xem hình bên dưới.
2. hạ cổ trước dư 1/4", điều chỉnh thông số trong dung sai. hạ cổ trước được đo từ mép trên đến chỗ gấp như hình bên dưới
3. kéo dài bo cổ thêm 1/2" tại giữa trước cho cả 2 bên, xem hình bên dưới
4. ngang thân trước 13 3/4, giữa như mẫu
5. ngang thân sau 15", giữa như mẫu
6. thay đổi rộng ngực 23 1/2
7. thay đổi rộng lai 23 1/2"
8. giảm rộng nếp giữa trước 1 3/4"
9. dời nút qua gần giữ trước thêm 1/4". nút được đo từ mép giữa trước giữa nút là 3/4". xem hình bên dưới
10. thay đổi vị trí artwork giữa trước



Screen Shot 2025-07-01 at 4.19.11 PM.jpg

SS26CT015 Baseball Jersey

Extend the neck rib trim 1/2" closer to CF on both sides. **tăng thêm chiều dài rib tại giữa giữa mỗi bên 1/2"**

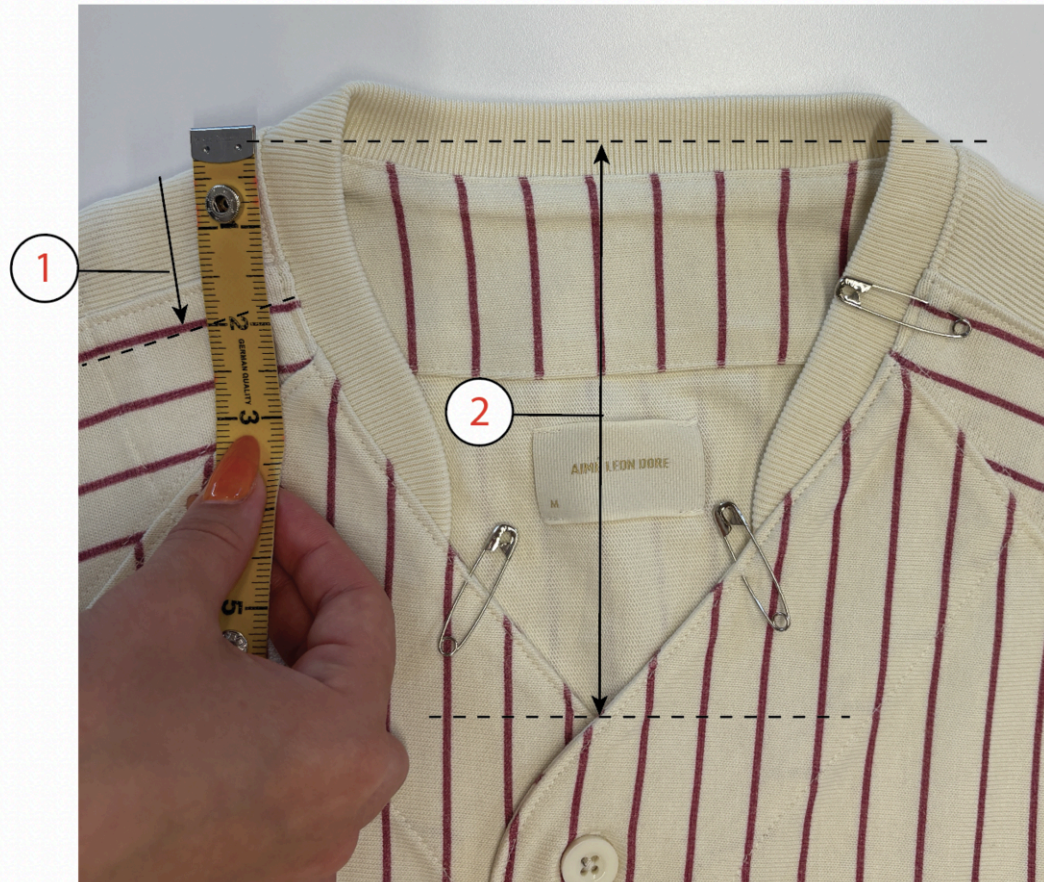


Screen Shot 2025-07-04 at 8.59.12 AM.jpg

1. chồm đắp vai trên mẫu proto là $1 \frac{3}{8}$ ", thay đổi $1 \frac{3}{4}$ "
2. hạ cổ trước dư $\frac{1}{4}$ ", điều chỉnh thông số trong dung sai, hạ cổ trước đo từ mép đến chỗ gấp như thể hiện số 2 bên dưới

SS26CT015 Baseball Jersey

1. Side panel is $1 \frac{3}{8}$ " forward on 1st proto, revised to $1 \frac{3}{4}$ ".
2. Front neck drop came in $+\frac{1}{4}$ ", go back to spec. FND is measured to top edge of break. See image.



Screen Shot 2025-07-04 at 9.20.07 AM.jpg

SS26CT015 Baseball Jersey

Rib was inserted and not top applied,
please top apply rib panel on 1st fit.

rib trên mẫu proto là tra không phải đắp, vui
lòng điều chỉnh thành đắp trên mẫu fit

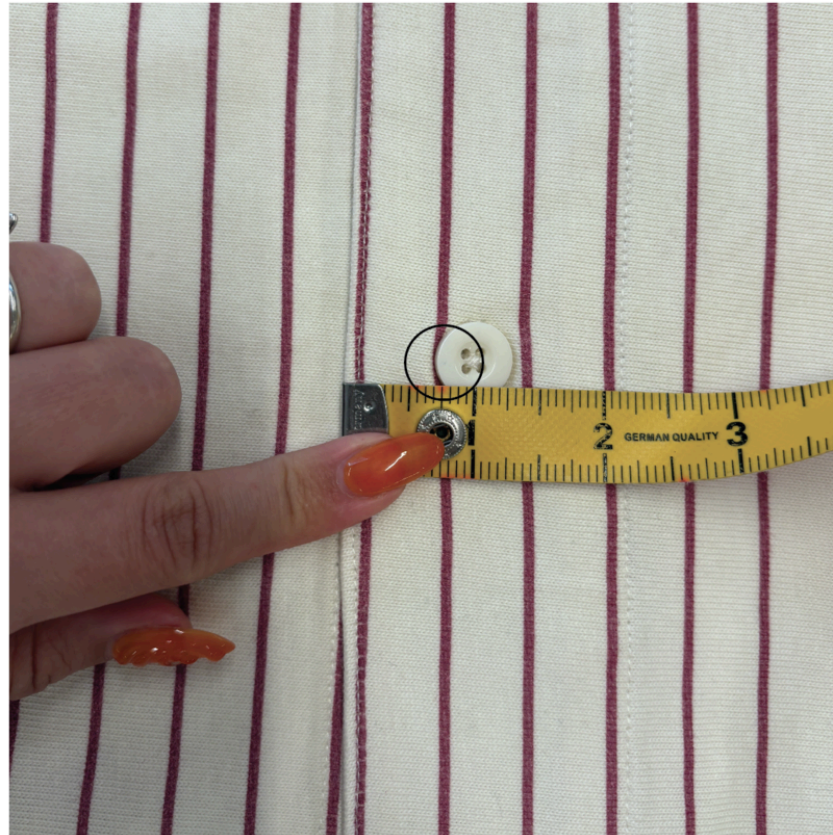


Screen Shot 2025-07-04 at 9.23.58 AM.jpg

SS26CT015 Baseball Jersey

dời nút qua gần giữa trước thêm 1/4", vị trí nút từ mép giữa trước đến giữa nút là 3/4"

Please bring buttons 1/4" closer to CF edge. Button should measure 3/4" from CF edge to button center



Screen Shot 2025-07-04 at 9.25.54 AM.jpg