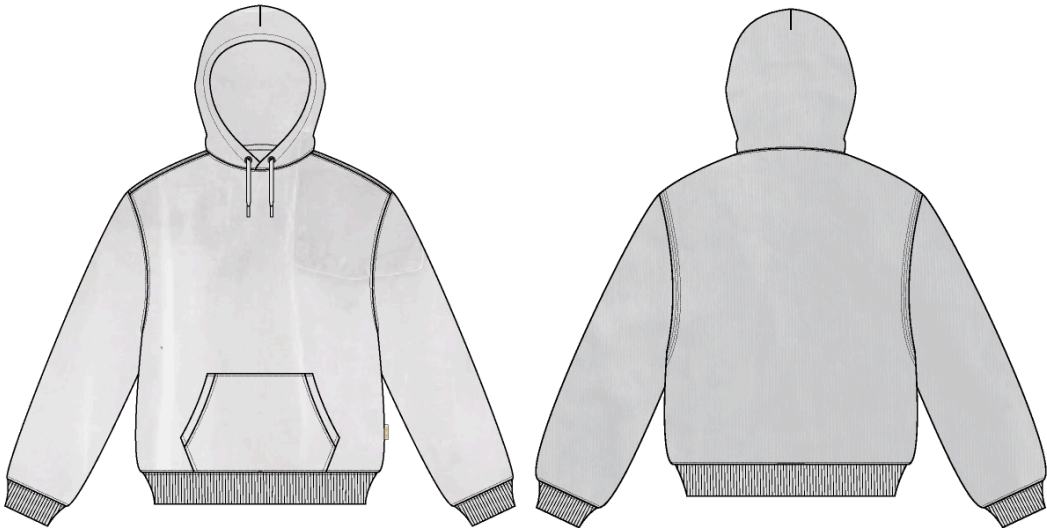


Sun Faded Hoodie

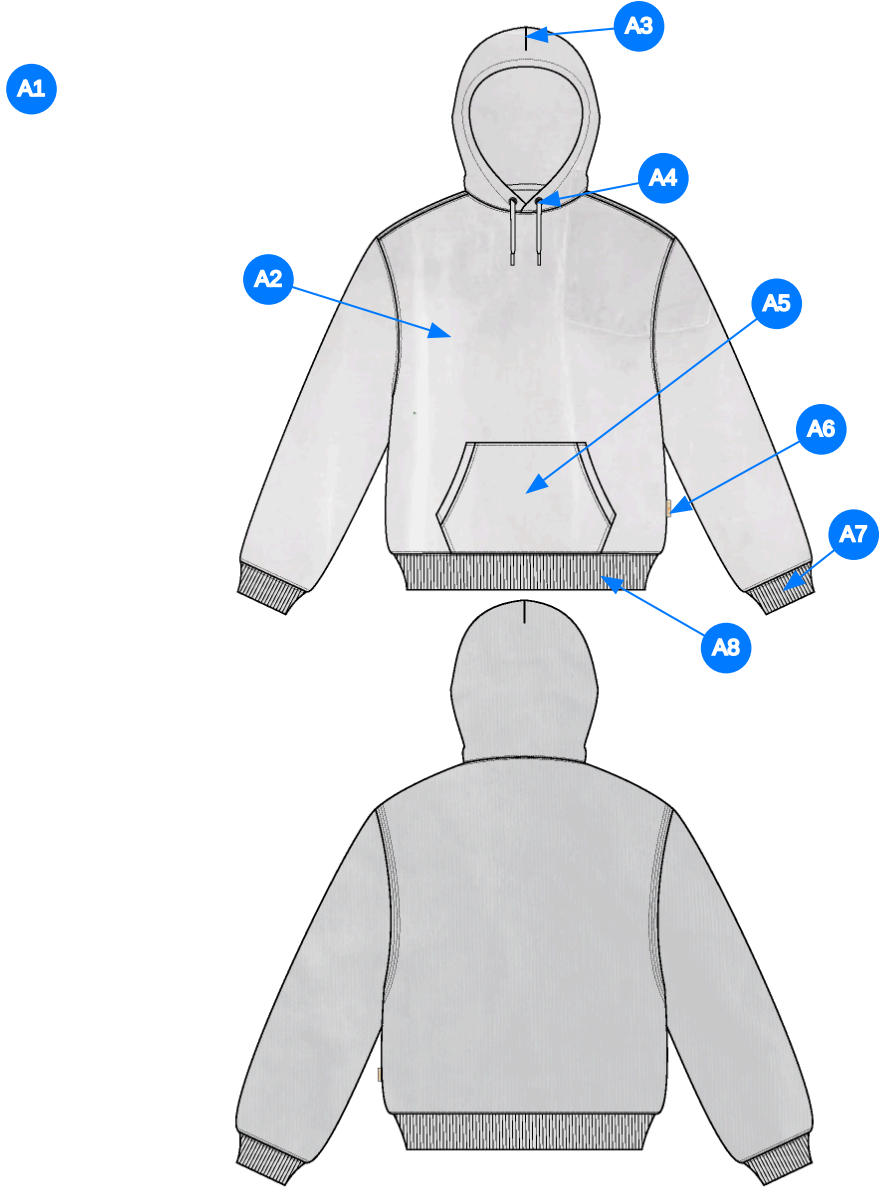
Name	Sun Faded Hoodie
Style No.	SS26CH003
Division	Mens
Category	Hoodies
Season	Spring/Summer
Year	2026
Size Scale	<div>M</div> -Sample size
	<div>XS</div> <div>S</div> <div>M</div> <div>L</div> <div>XL</div> <div>XXL</div>
Style Status	Development
Factory	UN-AVAILABLE
Designer Name	Wes
TD Name	Anastasiya
Created by/Author	3/12/2025 Jeni Fitzgerald jeni.fitzgerald@aimeleondore.com



1_B&W-1



2_CLR-1

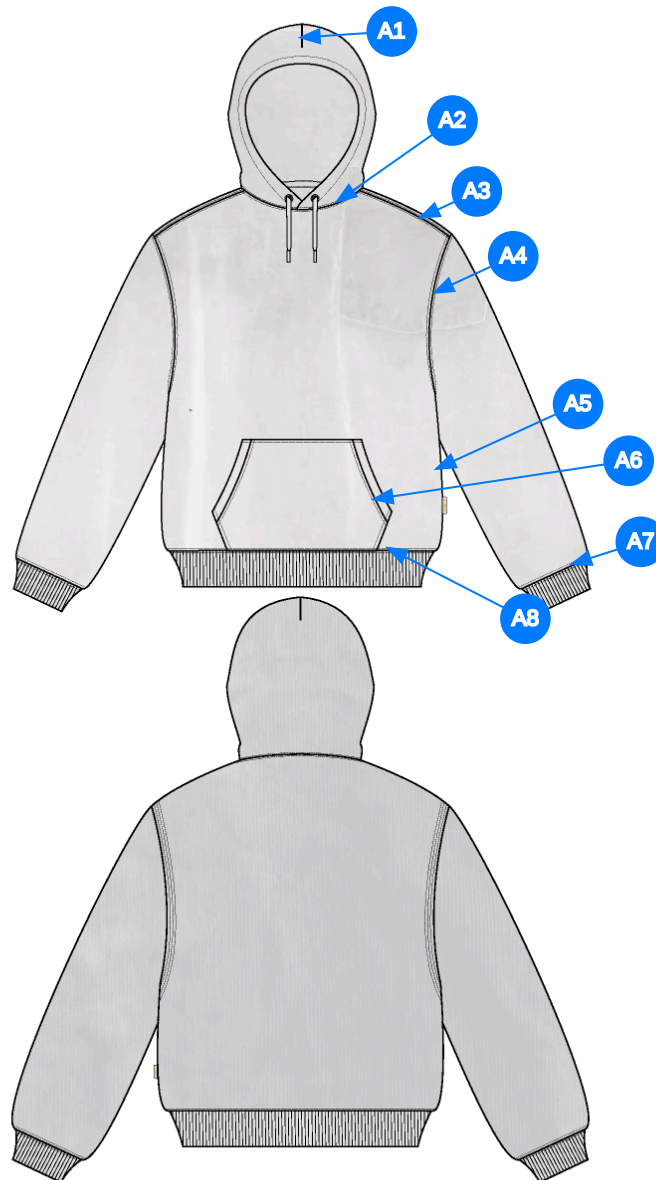


Comments (8)

- A1 FIT: HOODIE FIT BLOCK
- A2 ADD GARMENT WASH (SAME AS SS25 PAINT SPLATTER HOODIE)
- A3 DART @ HOOD
- A4 METAL EYELETS W/ DRAWCORD @ HOOD - FLAT BRAIDED DRAWCORDS W/ TURN BACK FINISH
- A5 KANGAROO POCKET @ FRONT BODY
- A6 WOVEN LABEL @ SIDE SEAM
- A7 2X2 RIB DOUBLED @ SLEEVE CUFF
- A8 2X2 RIB DOUBLED @ WAISTBAND

- 1. fit: tham khảo block fit hoodie
- 2. thêm wash (giống mã SS25CH000)
- 3. xẻ nón
- 4. mắt cáo với dây luồn đẹp gấp đầu tại nón
- 5. túi kangaroo tại thân trước
- 6. nhãn cờ tại sườn ngoài
- 7. rib tại lai tay
- 8. rib tại lai áo

3_Construction Details-1



Comments (7)

- A1** DART @ HOOD
- A2** STRADDLE STITCH @ NECK
- A3** STRADDLE STITCH @ SHOULDER SEAM
- A4** STRADDLE STITCH @ ARMHOLE
- A5** CLEAN SEAM @ SIDE SEAM
- A6** 1/8" SN TS @ POCKET - APPLIES TO TOP AND BOTTOM EDGES - 1/4" DN TS @ OPENINGS
- A7** STRADDLE STITCH @ SLEEVE CUFF

1. xẻ nón
2. điều rẽ tại cổ
3. điều rẽ tại vai
4. điều rẽ tại nách
5. may sạch tại đường may sườn
6. điều 1 kim 1/8" tại cạnh trên và cạnh dưới túi - điều 2 kim 1/4" tại miệng túi
7. điều rẽ tại lai tay

4_Stitching Details-1

Sample Size: M

POINT OF MEASURE	CODE	HOW TO MEASURE	CRITICAL	TYPE	TOLERANCE	M
Front Body Length	S&K01	HPS to bottom edge	true	Full	1/4 in	27 in
Back Body Length	S&K02	CB neck seam to bottom edge	true	Full	1/4 in	26 1/4 in
Shoulder Seam Forward	S&K	HPS to seam	false	Full	1/8 in	1/2 in
Shoulder Slope	S&K08	Shoulder point perpendicular to HPS	false	Full	1/4 in	2 1/2 in
Front Neck Drop	S&K04	HPS to neck seam	false	Full	1/8 in	3 1/2 in
Back Neck Drop	S&K05	HPS to neck seam	false	Full	1/8 in	3/4 in
Back Neck Width	S&K06	Seam to seam at back neck, at HPS point	false	Full	1/4 in	9 in
Minimum Neck Stretch	S&K199		true	Half	0 in	11 1/2 in
Across Shoulder Width- Seam to seam	S&K259	Seam to Seam	false	Full	1/4 in	22 1/2 in
Across Front/Across Back Position from HPS	eos7YR		true	Full	0 in	7 in
Across Front	S&K010	Down from HPS, Seam to seam	false	Half	1/4 in	20 1/2 in
Across Back	S&K011	Down from HPS, Seam to Seam	false	Half	1/4 in	21 in
Chest Width	S&K012	1" Below armhole- edge to edge	true	Half	1/4 in	22 1/2 in
Bottom Opening Width 2" Above Rib Seam	S&K	Straight, Extended (Pattern Measurement)	true	Half	1/2 in	20 in
Bottom Opening Width- At Seam	S&K108	Straight with seam relaxed	true	Half	1/4 in	19 1/2 in
Bottom Opening Width- At Edge	S&K013	At bottom edge	true	Half	1/4 in	17 1/2 in
Bottom Hem Height	S&K014	Bottom edge to stitch line or trim seam	false	Full	1/8 in	2 1/2 in
Sleeve Length from CB Neck	S&K032	3-point measure from CB Neck to shoulder point to sleeve edge	true	Full	1/4 in	35 in
Armhole Drop	S&K016	Below HPS - measure perpendicular	false	Full	1/4 in	13 in
Bicep Width	S&K017	1" below armhole- edge to edge	false	Half	1/8 in	10 1/4 in
Forearm Width	S&K033	9" up from sleeve cuff edge	false	Half	1/8 in	7 1/2 in
Sleeve Opening Width 1" Above Rib Knit Seam	S&K		true	Half	1/4 in	5 1/4 in
Sleeve Opening Width- At Seam	S&K034	Width at Seam	false	Half	1/8 in	4 3/4 in
Sleeve Opening Width- At Edge	S&K73	At edge	false	Half	1/8 in	3 3/4 in
Sleeve Cuff Height	S&K36	Cuff edge to seam	false	Full	1/8 in	2 1/2 in
Hood Height at CF	S&K40	From neck seam to top edge	false	Half	3/8 in	15 in
Hood Height at HPS	S&K170		false	Full	1/8 in	13 1/2 in
Hood Width 6" Below Top Edge	S&K41	Straight from CF edge to CB seam- 6" down	false	Half	3/8 in	11 in
Exposed Drawcord Length	JHqvA4		false	Full	1/2 in	10 in
Hood Tunnel Height	S&K183		false	Full	1/8 in	1 in
Hood Overlap Width at CF Neck	S&K174		false	Full	1/8 in	1 in
Drawcord Opening Placement up from Neck Seam	S&K212		false	Full	1/8 in	1 1/2 in
Kangaroo Pocket Height At Center	S&K44	Height at center	false	Full	1/4 in	8 1/2 in
Kangaroo Pocket Height at Sides	S&K384		false	Full	1/8 in	3 in
Kangaroo Pocket Width at Top Edge	S&K45	Width at top edge	false	Full	1/4 in	9 1/2 in
Kangaroo Pocket Width at Bottom	S&K46	Width at Bottom Edge - Extended	false	Full	1/4 in	12 3/4 in
Kangaroo Pocket Opening	S&K205		false	Full	1/8 in	6 1/4 in
Kangaroo Pocket Hem Height	S&K031	Edge to stitch line	false	Full	1/8 in	3/4 in
Loop Label Placement at Sideseam	S&K023	Bottom edge to bottom of loop label, at the WL side seam	false	Full	1/8 in	7 in








Development Notes - Anastasiya Zolotova

CREATED ON MAR 10, 2025 3:40 AM

SS26CH003 Sun Faded Hoodie
Date: 3/9/24
Status:Requesting 1st Proto
TD: Anastasiya

Fit: Please follow latest block pattern of "FB12 Hoodie Block - Drop Shoulder Fit"
-add wash on 1st proto
-add 2x2 rib at sleeve and hem

fit: tham khảo block FB012
-thêm wash trên mẫu 1st proto
-thêm rib tại lai tay và lai áo

COMPONENT		QTY	1.  PROTO
FABRIC			
1	UA Loop Back Heavy Fleece CODE: C2300234 French Terry Placement: BODY / PATCH POCKET/ DOUBLED AT HOOD Notes: FOLLOW SS25CH000 FOR SUN DYED WASH (NO PAINT SPLATTER) Supplier: UNAVAILABLE Weight: 560gsm		-  Evening Blue Custom Code: 19-3815 TCX Price: 0.00
2	UA 2x2 Terry Rib CODE: C2300246 Placement: CUFFS, HEM Notes: DOUBLED Supplier: UNAVAILABLE		-  Evening Blue Custom Code: 19-3815 TCX Price: 0.00
3	EY-GOLD1 CODE: UA Gold Generic Eyeletes Placement: DRAWCORD EXIT Notes: 21L Supplier: UNAVAILABLE		-  EY-GOLD1 Price: 0.00
4	SS24-CFDW CODE: UA Cotton Flat Drawcord Placement: DRAWCORD TUNNEL Notes: TURNBACK FINISH Supplier: UNAVAILABLE		-  Evening Blue Custom Code: 19-3815 TCX Price: 0.00
5	UA Herringbone Tape CODE: ALTAPE1 Placement: STRADDLED OVER BACK NECK SEAM F/ SH TO SH Supplier: UNAVAILABLE		-  Evening Blue Custom Code: 19-3815 TCX Width: Undefined Price: 0.00
LABEL AND TRIM PACKAGE			
6	ALD Woven Loop Label CODE: ALD-ML02 Placement: WL SIDE SEAM Notes: FOLLOW POM Supplier: Colonial	1	-  Parmesan Base / Gold Text Price: 0.00
7	ALD Woven Main Label W/ Size CODE: ALD-ML03 Placement: INTERIOR CENTER BACK NECK Supplier: Colonial Country of Origin: CHINA	1 Piece	- ALD Woven Main Label W/ Size Price: 0.079
Components 7			Total 0.079