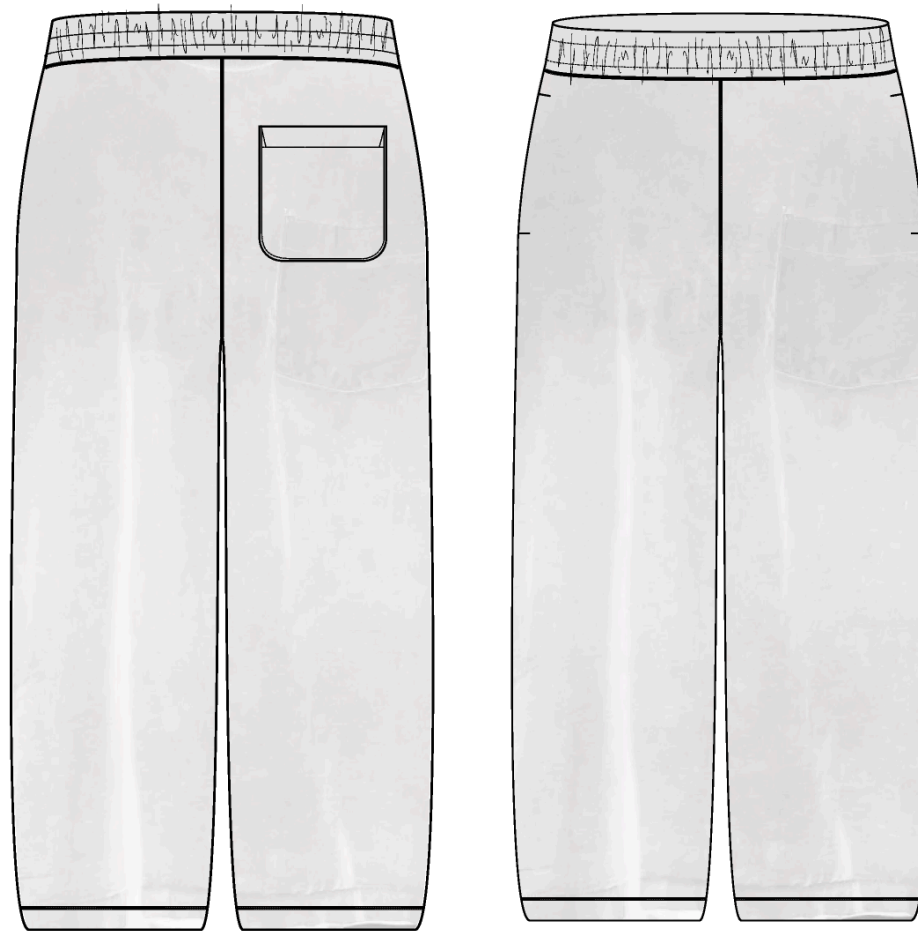


Sun Faded Sweatpant

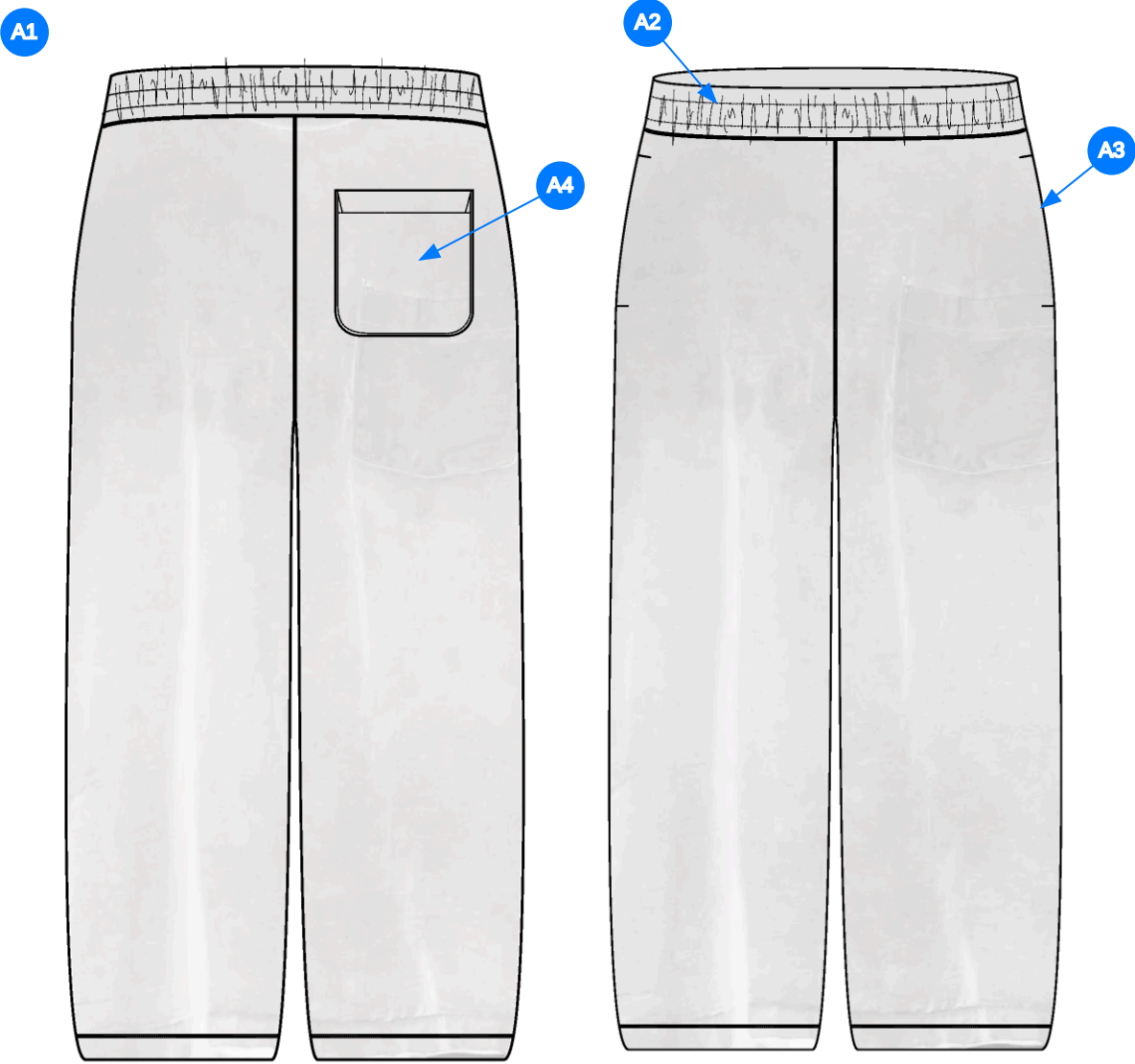
Name	Sun Faded Sweatpant
Style No.	SS26CP001
Division	Mens
Category	Sweatshirts
Season	Spring/Summer
Year	2026
Size Scale	<div>M</div> -Sample size <div><div>XS</div><div>S</div><div>M</div><div>L</div><div>XL</div><div>XXL</div></div>
Style Status	Development
Factory	UN-AVAILABLE
Designer Name	Wes
TD Name	Anastasiya
Created by/Author	3/12/2025 Jeni Fitzgerald jeni.fitzgerald@aimeleondore.com



1_B&W-1



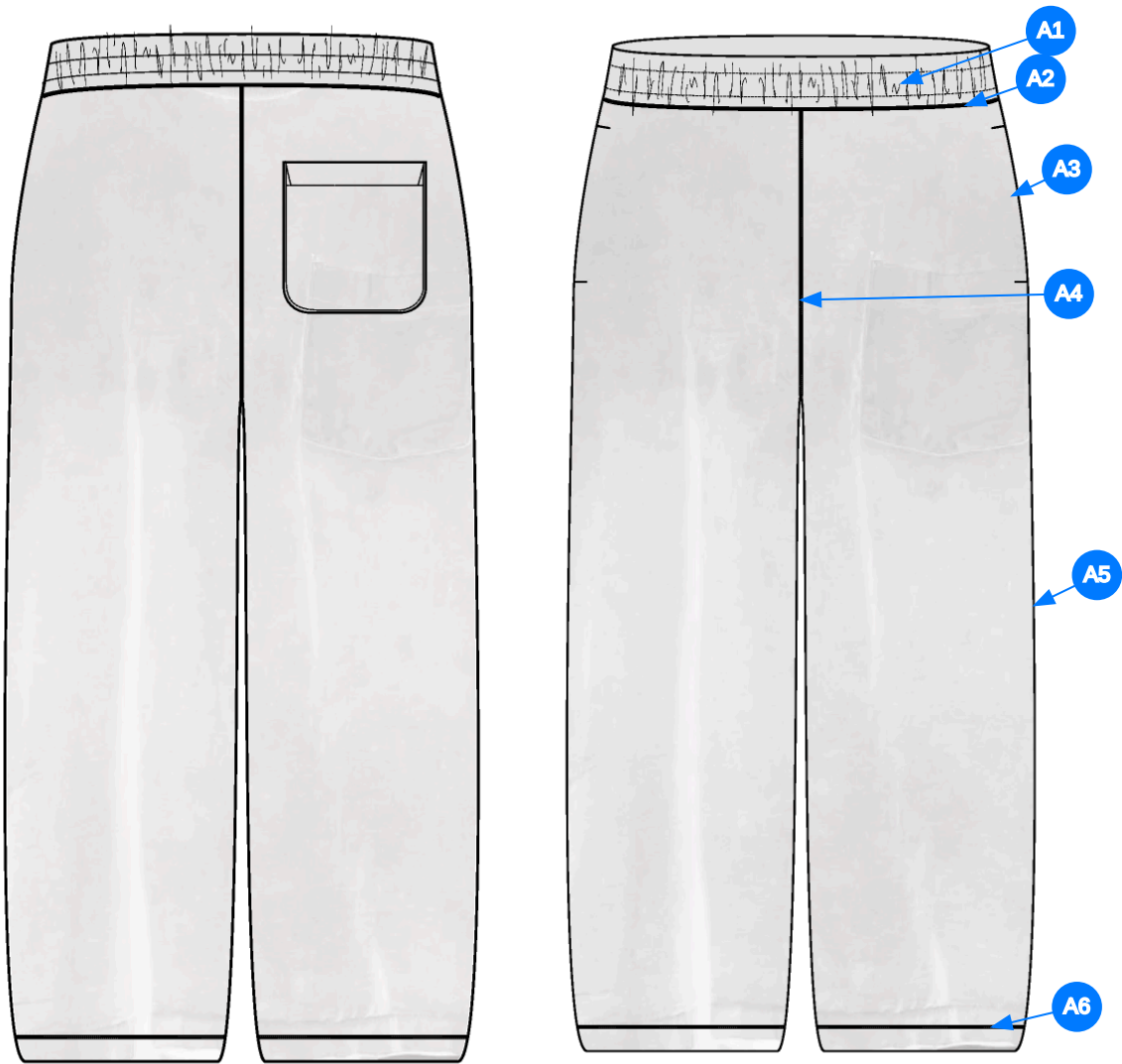
2_CLR-1



- Comments (4)
- A1** FIT: SWEATPANT FIT BLOCK - GARMENT WASH (SAME AS SS25 PAINT SPLATTER HOODIE)
PIECED ON ELASTICATED WAISTBAND W/ INTERIOR DRAWCORDS - COTTON FLAT BRAIDED DRAWCORD - TURN BACK FINISH - BUTTONHOLE EYELETS - FLAT ELASTIC INSERT
 - A2** ON SEAM POCKETS @ SIDE SEAM -KNUCKLE SIDE COTTON JERSEY - PALM SIDE SELF FABRIC
 - A3** SELF FABRIC PATCH POCKET @ BACK WR LEG
 - A4**

- 1. fit: tham khảo sweatpant fit block
- 2. lưng quần thun rời với dây luồn bên trong - dây luồn cotton đẹp gấp đầu - thùy khuy
- 3. túi sườn tại đường may sườn - sử dụng cotton jersey cho lót túi lòng bàn tay - sử dụng vải chính cho lót túi mặt còn lại
- 4. túi patch bằng vải chính tại quần phải sau người mặc

3_Construction Details-1



Comments (6)

- A1 3/4" DN TS @ DRAWCORD TUNNEL
- A2 COVERLOCK STITCH @ WAISTBAND
- A3 1/4" SN TS @ POCKETS -BAR TACKS @ TOP & BOTTOM EDGES
- A4 COVERLOCK STITCH @ FRONT RISE
- A5 CLEAN SEAM FINISH @ SIDE SEAM
- A6 COVERLOCK STITCH @ BOTTOM HEM

- 1. điều 2 kim 3/4" tại lưng quần
- 2. vắt sổ tại lưng quần
- 3. điều 1 kim 1/4" tại túi sườn - bộ tại cạnh trên và cạnh dưới túi
- 4. vắt sổ tại đáy trước
- 5. may sạch tại đường may sườn
- 6. vắt sổ tại lai

4_Stitching Details-1

Sample Size: M

POINT OF MEASURE	CODE	HOW TO MEASURE	CRITICAL	TYPE	TOLERANCE	M
Waistband Height	S&K49	Waist seam to top edge	false	Full	1/8 in	2 in
Waist Width Relaxed	S&K50	Straight at top edge- garment relaxed	true	Half	1/2 in	15 3/8 in
Waist Width Extended	S&K51	Straight, with waist or elastic stretched	true	Half	1/2 in	21 in
Distance Between Drawcord Exit	S&K294		false	Full	1/8 in	1 1/2 in
Exposed Drawcord Length	JHqvA4		false	Full	1/2 in	10 in
Front Rise	S&K53	Crotch seam to waistband top edge	true	Half	3/8 in	13 1/4 in
Back Rise	S&K54	Crotch seam to waistband top edge	true	Half	3/8 in	16 1/2 in
Low Hip Position Below Waistband Top Edge	S&K55		true	Full	0 in	8 in
Low Hip Width	S&K56	3-pt measurement taken 8" down from waistband top edge	true	Half	1/2 in	21 1/2 in
Thigh Width	S&K57	1" below crotch point	false	Half	3/8 in	13 1/4 in
Knee Width	S&K58	12" down from the crotch point	false	Half	3/8 in	11 1/2 in
Calf Width	S&K318	Measured 18" down from Crotch point	false	Half	1/4 in	10 3/4 in
Leg Opening width at edge	S&K421		false	Half	1/4 in	10 in
Inseam Length	S&K60	Crotch point to leg opening, along seam	true	Full	1/2 in	29 1/2 in
Bottom Hem Height	S&K014	Bottom edge to stitch line or trim seam	false	Full	1/8 in	1 in
Front Pocket Placement Below Waistband	S&K62	Waistband seam to top of pocket	false	Full	1/4 in	3/4 in
Front Pocket Opening Length	S&K63	Along opening edge	false	Full	1/4 in	6 1/4 in
Pocket Bag Height	S&K030	Top edge to bottom edge of pocket bag inside	false	Full	1/8 in	11 1/2 in
Pocket Bag Width	S&K199		false	Full	1/8 in	7 in
WR Back Pocket Placement Below Waistband Seam Outer Corner	S&K64	Waistband seam to top of pocket	false	Full	1/4 in	2 1/4 in
WR Back Pocket Placement Below Waistband Seam Inner Corner	s2eFRA		true	Full	1/8 in	2 3/8 in
WR Back Pocket Placement from CB Rise	S&K65	Inside edge of pocket to CB rise seam	false	Full	1/4 in	2 1/4 in
WR Back Pocket Hem Height	S&K031	Edge to stitch line	false	Full	1/8 in	3/4 in
WR Back Pocket Width	S&K66	Width of pocket at widest	false	Full	1/4 in	5 3/4 in
WR Back Pocket Height	S&K67	Top edge to bottom edge	false	Full	1/4 in	6 1/4 in







Development Notes - Anastasiya Zolotova

CREATED ON MAR 10, 2025 3:43 AM

SS26CP001 Sun Faded Sweatpant
Date: 3/9/24
Status:Requesting 1st Proto
TD: Anastasiya

Fit: Please follow pattern of NOSCP001 Unisphere Sweatpant
-add wash to 1st proto

fit: tham khảo rập mã NOSCP001
- thêm wash

COMPONENT		QTY	1.  PROTO
FABRIC			
1	UA Loop Back Heavy Fleece CODE: C2300234 French Terry Placement: BODY, PATCH POCKET, PALM SIDE SS POCKET INTERIOR, PIECED ON WAISTBAND Notes: FOLLOW SS25CH000 FOR SUN DYED WASH (NO PAINT SPLATTER) Supplier: UNAVAILABLE Weight: 560gsm		-  Red Clay Custom Code: 18-1454 TCX Price: 0.00
2	C2202550 SINGLE JERSEY CODE: xSmJM Placement: KNUCKLE SIDE SS POCKET INTERIOR Supplier: UNAVAILABLE		-  Red Clay Custom Code: 18-1454 TCX Price: 0.00
3	UA ELASTIC CODE: S24-ELASTIC Placement: WAISTBAND Supplier: UNAVAILABLE		-  Undefined Price: 0.00
4	SS24-CFDW CODE: UA Cotton Flat Drawcord Placement: WB TUNNEL Notes: TURN BACK FINISH Supplier: UNAVAILABLE		-  Red Clay Custom Code: 18-1454 TCX Price: 0.00
5	THREAD EYELET CODE: THREAD EYELET Placement: CF WB Notes: BUTTON HOLE SLIT, NOT ROUND Supplier: Factory Sourced		-  Red Clay Custom Code: 18-1454 TCX Price: 0.00
LABEL AND TRIM PACKAGE			
6	ALD WOVEN TOP INSERT LABEL (LARGE) CODE: ALD-ML134 Placement: INTERIOR WAISTBAND AT CENTER BACK Supplier: Colonial Country of Origin: CHINA	1 M	- ALD WOVEN TOP INSERT LABEL (LARGE) SIZE VARIANTS: ALPHA Price: 225.00
Components 6			Total 225.00