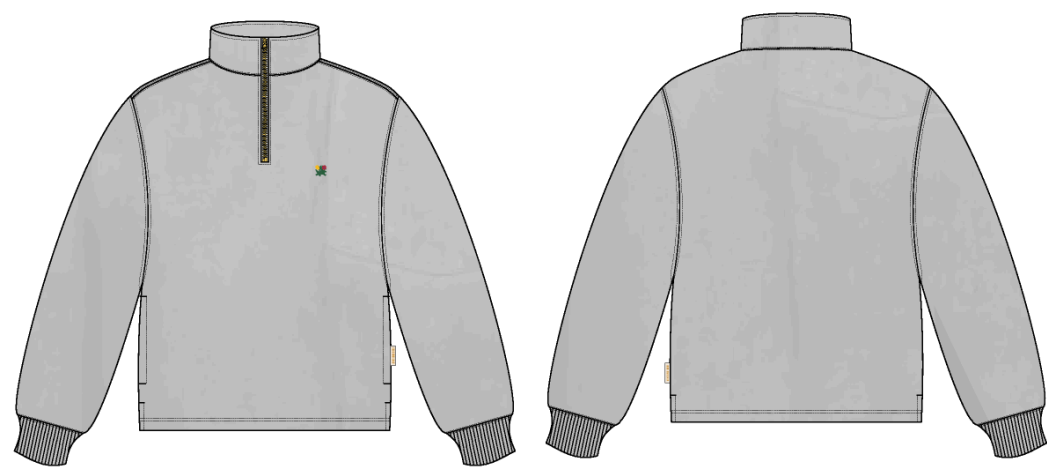


Sun Faded Quarter Zip

Name	Sun Faded Quarter Zip
Style No.	SS26CS019
Division	Mens
Category	Sweatshirts
Season	Spring/Summer
Year	2026
Size Scale	<div>M</div> -Sample size <div><div>XS</div><div>S</div><div>M</div><div>L</div><div>XL</div><div>XXL</div></div>
Style Status	Adopted
Factory	UN-AVAILABLE
Designer Name	Wes
TD Name	Anastasiya
Created by/Author	6/6/2025 Anastasiya Zolotova anastasiya.zolotova@aimeleondore.com



1_B&W-1



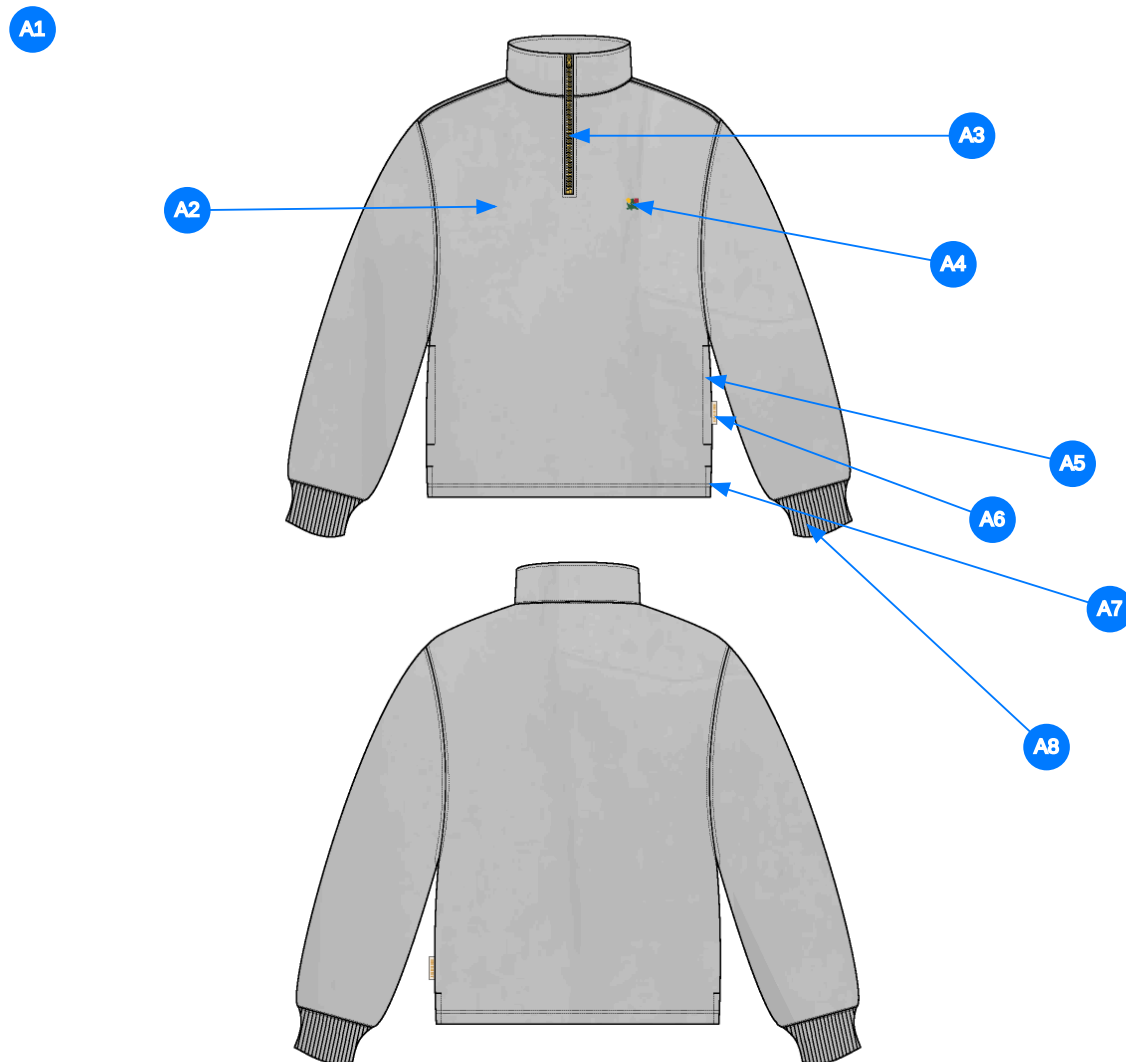
2_CLR-1

Comments (8)

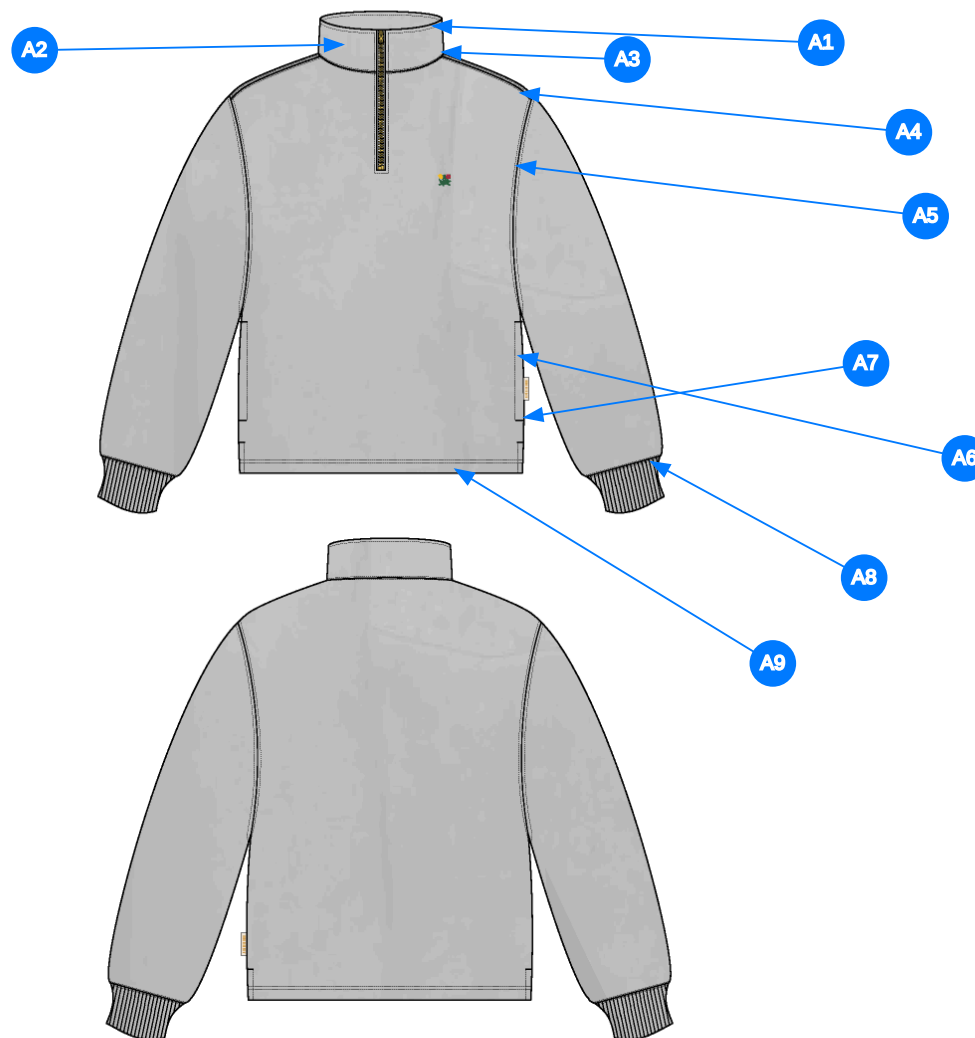
- A1** FIT: CREST QUARTER ZIP
- A2** ADD GARMENT WASH (SAME AS SS25 PAINT SPLATTER HOODIE)
- A3** ZIPPER CLOSURE @ CF - ZIPPER: #5 YKK CLOSED END METAL ZIPPER - SLIDER: DA8MDH
- A4** ARTWORK @ WL CHEST -SEE SEPARATE FILE FOR ARTWORK DETAILS
- A5** POCKET @ SIDE SEAM - USE COTTON JERSEY FOR POCKET BAGS
- A6** ALD WOVEN LABEL @ SIDE SEAM
- A7** VENT @ SIDE SEAM -ADD HERRINGBONE TAPE @ FACING
- A8** 1X1 RIB DOUBLED @ SLEEVE CUFF

fit:

- 2. thêm wash (giống mã C0012-HOD170)
- 3. dây kéo giữa trước, dây kéo metal răng 5 đầu DA8MDH
- 4. artwork tại ngực trái
- 5. túi tại đường may sườn - lót túi bằng vải single jersey
- 6. nhãn cò tại sườn ngoài
- 7. xẻ lai tại sườn - thêm dây tape xương cá tại xẻ lai
- 8. rib 1x1 2 lớp tại bo tay



3_Construction Details-1



Comments (9)

- A1** 1/4" SN TS @ COLLAR - APPLIES TO TOP EDGE ONLY
- A2** SN TS @ CF
- A3** STRADDLE STITCH @ NECK
- A4** STRADDLE STITCH @ SHOULDER SEAM
- A5** STRADDLE STITCH @ ARMHOLE
- A6** 1/4" SN TS @ WELT POCKETS - ADD BAR TACKS AT TOP AND BOTTOM EDGE
- A7** STRADDLE STITCH @ SIDE SEAM
- A8** STRADDLE STITCH @ SLEEVE CUFFS
- A9** 1/4" DN TS @ BOTTOM HEM - TURNBACK HEM WITH COVERLOCK

1. điều 1 kim 1/4" tại mép cổ trên
2. điều 1 kim tại giữ trước
3. điều rẽ tại cổ
4. điều rẽ tại đường may vai
5. điều rẽ tại đường may nách
6. điều 1 kim 1/4" coi túi - bộ tại cạnh trên và cạnh dưới túi
7. điều rẽ tại đường may sườn
8. điều rẽ tại lai tay
9. điều 2 kim 1/4" tại lai áo

4_Stitching Details-1

Sample Size: M

POINT OF MEASURE	HOW TO MEASURE	CRITICAL	TYPE	TOLERANCE	M
Front Body Length	HPS to bottom edge	true	Full	1/2 in	26 in
Back Body Length	CB neck seam to bottom edge	true	Full	1/2 in	25 in
Front Neck Drop	HPS to neck seam	false	Full	1/8 in	4 in
Back Neck Drop	HPS to neck seam	false	Full	1/8 in	1 in
Back Neck Width	Seam to seam at back neck, at HPS point	false	Full	1/4 in	7 in
Neck Width at Top @ Top Edge		false	Full	1/8 in	8 1/2 in
CF Zipper Length	From neck to bottom edge	false	Full	1/4 in	7 1/4 in
Shoulder Slope	Shoulder point perpendicular to HPS	false	Full	1/4 in	2 1/2 in
Across Shoulder	Edge to edge	false	Half	1/4 in	22 1/2 in
Across Front/Across Back Position from HPS		true	Full	0 in	0 in
Across Front	Down from HPS, Seam to seam	false	Half	1/4 in	20 1/2 in
Across Back	Down from HPS, Seam to Seam	false	Half	1/4 in	21 in
Chest Width	1" Below armhole- edge to edge	true	Half	1/4 in	22 1/2 in
Bottom Opening Width- At Edge	At bottom edge	true	Half	1/4 in	22 1/2 in
Bottom Hem Height	Bottom edge to top of trim	false	Full	1/8 in	1 in
Sleeve Length from CB Neck	3-point measure from CB Neck to shoulder point to sleeve edge	true	Full	1/4 in	35 in
Armhole Drop	Below HPS - measure perpendicular	false	Full	1/4 in	13 in
Bicep Width	1" below armhole- edge to edge	false	Half	1/4 in	10 1/4 in
Forearm Width	9" up from sleeve cuff edge	false	Half	1/4 in	7 1/4 in
Sleeve Opening Width- At Seam	Width at Seam	false	Half	1/4 in	4 1/2 in
Sleeve Opening Width- At Edge	At edge	false	Half	1/4 in	3 3/4 in
Sleeve Cuff Height	Cuff edge to seam	false	Full	1/8 in	2 1/4 in
Collar Height at CB	Neck seam to collar edge at CB	false	Full	1/8 in	3 in
On-seam Pocket Opening Length	Along opening edge	false	Full	1/4 in	6 1/4 in
On-Seam Pocket Placement from Bottom Edge		false	Full	1/8 in	4 in
Side Slit Height	From bottom edge to top of slit	false	Full	1/8 in	2 in
Sideseam Forward Placement		false	Full	1/8 in	1/2 in
WL Chest Artwork Placement from HPS to Top Edge		true	Full	1/8 in	7 3/4 in
WL Chest Artwork Placement Out from CF Line		false	Full	1/8 in	3 1/4 in
Loop Label Placement at Sideseam	Bottom edge to bottom of loop label, at the WL side seam	false	Full	1/8 in	7 in

Development Notes - Anastasiya Zolotova

CREATED ON JUN 6, 2025 4:52 AM

SS26CS019 Sun Faded Quarter Zip
Date: 6/6/25
Status: Requesting 1st Proto
TD: Anastasiya

Please follow measurement page, construction page, and design page to create 1st porto.(Internal following FW24CS002 Crest Quarter Zip)

tham khảo thông số, cấu trúc, và sketch để làm mẫu proto



Screen Shot 2025-06-06 at 1.44.44 PM.jpg