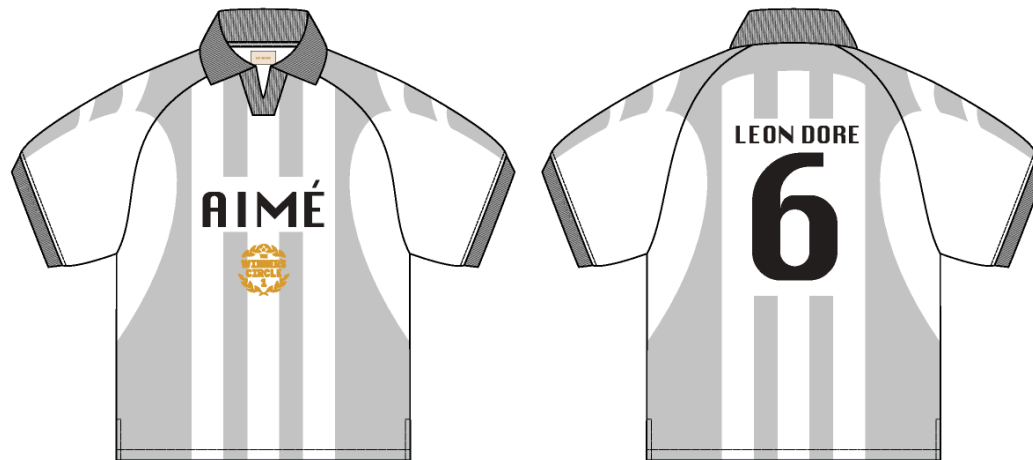


Soccer Jersey

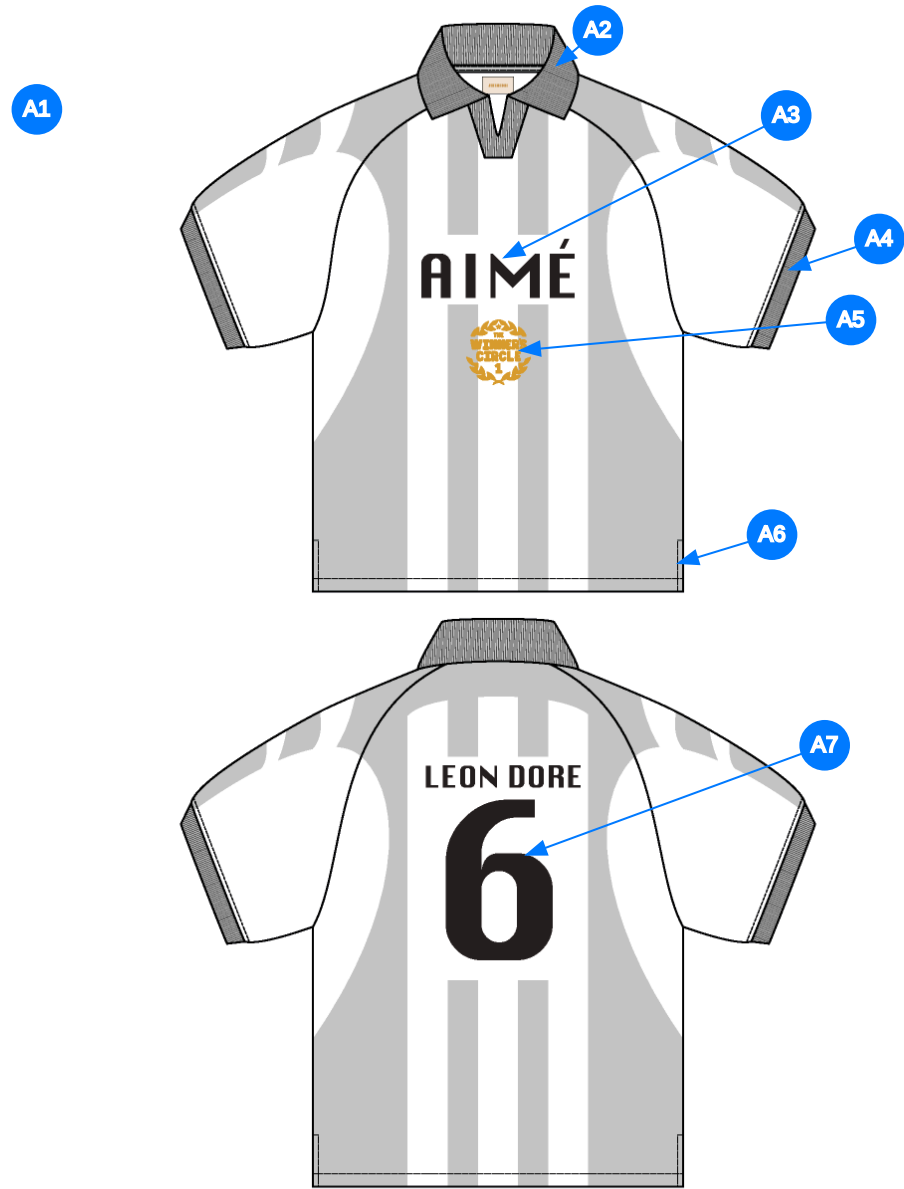
Name	Soccer Jersey
Style No.	SS26CT014
Division	Mens
Category	Tees
Season	Spring/Summer
Year	2026
Size Scale	<div>M</div> -Sample size <div><div>XS</div><div>S</div><div>M</div><div>L</div><div>XL</div><div>XXL</div></div>
Style Status	Development
Factory	UN-AVAILABLE
Designer Name	Wes
TD Name	Anastasiya
Created by/Author	3/12/2025 Jeni Fitzgerald jeni.fitzgerald@aimeleondore.com



1_B&W-1



2_CLR-1



3_Construction Details-1

Comments (7)

- A1 FIT: NOVELTY JERSEY (SS24CT025)
- A2 1X1 RIB DOUBLED @ NECK - SEE ADDITIONAL PAGE FOR COLLAR CONSTRUCTION DETAILS - POLY TAPE ALONG NECK
- A3 PRINTED ARTWORK @ BODY & SLEEVES - SEE ADDITIONAL FILE FOR ARTWORK DETAILS
- A4 1X1 RIB DOUBLED @ COLLAR
- A5 ARTWORK @ CF - SEE ADDITIONAL FILE FOR ARTWORK DETAILS
- A6 VENT @ SIDE SEAM - TURNBACK W/ COVERLOCK
- A7 PRINTED ARTWORK @ BODY & SLEEVES - SEE ADDITIONAL FILE FOR LAYOUT DETAILS

1. fit tham khảo SS25CT025
2. Rib tại cổ - dây tape poly viền cổ sau
3. in tại thân và tay
4. rib tại tay
5. in tại giữa thân trước
6. xẻ lai tại đường may sườn
7. in tại thân và tay



Comments (6)

- A1 1/4" SN TS @ NECK
- A2 CLEAN SEAM FINISH @ RAGLAN SEAM
- A3 1/8" SN TS @ SLEEVE CUFF
- A4 CLEAN SEAM @ SIDE SEAM
- A5 SN TS @ VENT
- A6 1/4" SN TS @ BOTTOM HEM

- 1. điều 1 kim 1/4" tại cổ
- 2. may sạch tại đường may raglan
- 3. điều 1 kim 1/8" tại lai tay
- 4. may sạch tại đường may sườn
- 5. điều 1 kim tại xẻ lai
- 6. điều 1 kim 1/4" tại lai áo

4_Stitching Details-1

cấu trúc cổ

COLLAR CONSTRUCTION REFERENCE



5_Collar Construction-1

Sample Size: M

POINT OF MEASURE	CODE	HOW TO MEASURE	CRITICAL	TYPE	TOLERANCE	M
Front Body Length	S&K01	HPS to bottom edge	true	Full	1/4 in	27 1/4 in
Back Body Length	S&K02	CB neck seam to bottom edge	true	Full	1/4 in	26 1/4 in
Raglan Shoulder Slope	S&K37	9 1/2" out from CB, at HPS line	false	Full	1/8 in	2 in
Front Neck Drop	S&K04	HPS to neck seam	false	Full	1/8 in	6 1/2 in
Back Neck Drop	S&K05	HPS to neck seam	false	Full	1/8 in	3/4 in
Back Neck Width	S&K06	Seam to seam at back neck, at HPS point	false	Full	1/4 in	7 1/2 in
Minimum Neck Stretch	S&K199		true	Half	0 in	11 1/2 in
CF Placket Length	S&K081	CF neck drop to bottom of placket	true	Full	1/8 in	4 in
CF Placket Width @ Bottom Edge of Placket	S&K082		false	Full	1/8 in	1 3/4 in
Front Saddle Seam Placement at Neck	S&K38	HPS to saddle seam straight down	false	Full	1/8 in	2 1/4 in
Back Saddle Seam Placement at Neck	S&K39	HPS to saddle seam straight down	false	Full	1/8 in	2 in
Across Front	S&K010	7" dwn from HPS, Seam to seam	false	Half	1/4 in	13 1/2 in
Across Back	S&K011	7" dwn from HPS, Seam to Seam	false	Half	1/4 in	14 3/4 in
Chest Width	S&K012	1" Below armhole- edge to edge	true	Half	1/4 in	22 1/2 in
Bottom Opening Width- At Edge	S&K108	Straight with seam relaxed	true	Half	1/4 in	22 in
Sleeve Length from CB Neck	S&K032	3-point measure from CB Neck to shoulder point to sleeve edge	true	Full	1/2 in	19 1/2 in
Armhole Drop	S&K016	Below HPS - measure perpendicular	false	Full	1/4 in	11 3/4 in
Bicep Width	S&K017	1" below armhole- edge to edge	false	Half	1/4 in	9 in
Sleeve Opening Width- At Edge	S&K73	At edge	false	Half	1/4 in	6 1/2 in
Sleeve Hem Trim Height	S&K019	Edge to seam- trim width	false	Full	1/8 in	3/4 in
Collar Point Length	S&K024	Neck seam to collar point, along edge	false	Full	1/8 in	2 1/2 in
Collar Height at CB	S&K025	Neck seam to collar edge at CB	false	Full	1/8 in	3 1/2 in
Collar Length along the edge	S&K026	Collar point to collar point, along the edge	false	Full	3/8 in	15 1/2 in
CF Artwork Placement below CF Neckline	S&K112	From CF Neck Seam to Top Edge of Artwork	false	Full	1/8 in	5 1/2 in
CB Artwork Placement below CB Neck Seam	S&K109	From CB Neck Seam to Top Edge of Artwork	false	Full	1/8 in	4 1/2 in

Development Notes - Anastasiya Zolotova

CREATED ON MAR 7, 2025 11:15 PM

SS26CT014 Soccer Jersey

Date: 3/7/24

Status:Requesting 1st Proto




TD: Anastasiya

Fit: Please follow FW24CT064 Porsche Soccer Jersey for fit with below changes.

- No overlap on neck trim insert, see sketch
- Follow revised neck width and front neck drop.

fit: tham khảo FW25CT064 và thay đổi bên dưới

- thay đổi cấu trúc trụ cổ không chồng lên nhau, tham khảo cấu trúc như sketch
- thay đổi rộng cổ và hạ cổ trước

COMPONENT		QTY	1.  PROTO
1	UA-MA037 CODE: Placement: BODY AND SLEEVES Supplier: UNAVAILABLE		-  Undefined Price: 0.00
2	IN DEV CODE: TBD Placement: COLLAR, CF PLACKET, SLEEVE CUFFS Notes: 1X1 RIB, DOUBLED; PLS ADVISE ART. #; COLOR = RED		- IN DEV Price: 0.00
3	UA-02PT CODE: UA Sport Poly Neck Tape Placement: CB NECK INTERIOR Supplier: UNAVAILABLE		-  Undefined Price: 0.00
4	ARTWORK CODE: AS CORRESPONDING FILE Placement: ALL OVER PRINT Notes: FOLLOW ARTWORK FILE AND POM Supplier: Factory Sourced		- ARTWORK Price: 0.00
5	ARTWORK CODE: AS CORRESPONDING FILE Placement: CF CHEST Notes: FOLLOW ARTWORK FILE AND POM Supplier: Factory Sourced		- ARTWORK Price: 0.00
LABEL AND TRIM PACKAGE			
6	ALD Woven Main Label W/ Size CODE: ALD-ML03 Placement: CB NECK INTERIOR Notes: FOLLOW POM Supplier: Colonial Country of Origin: CHINA	1 Piece	- ALD Woven Main Label W/ Size Price: 0.079
Components 6			Total 0.079