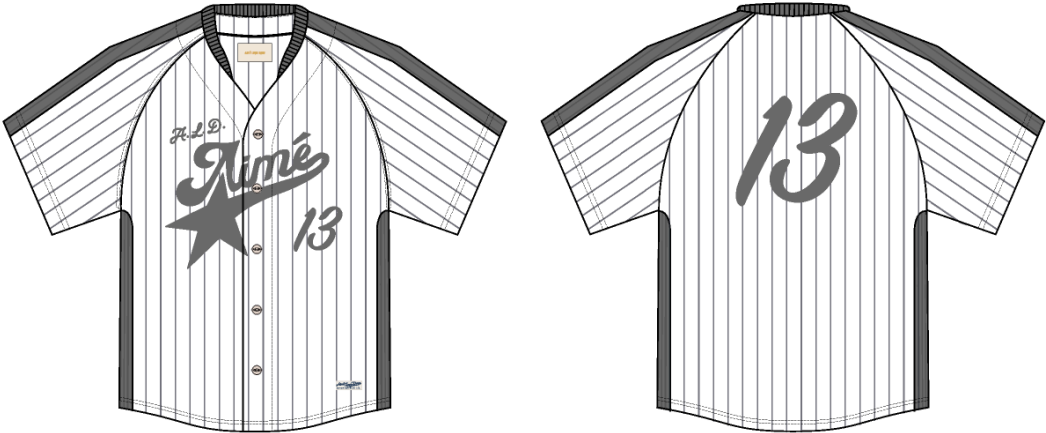


Baseball Jersey

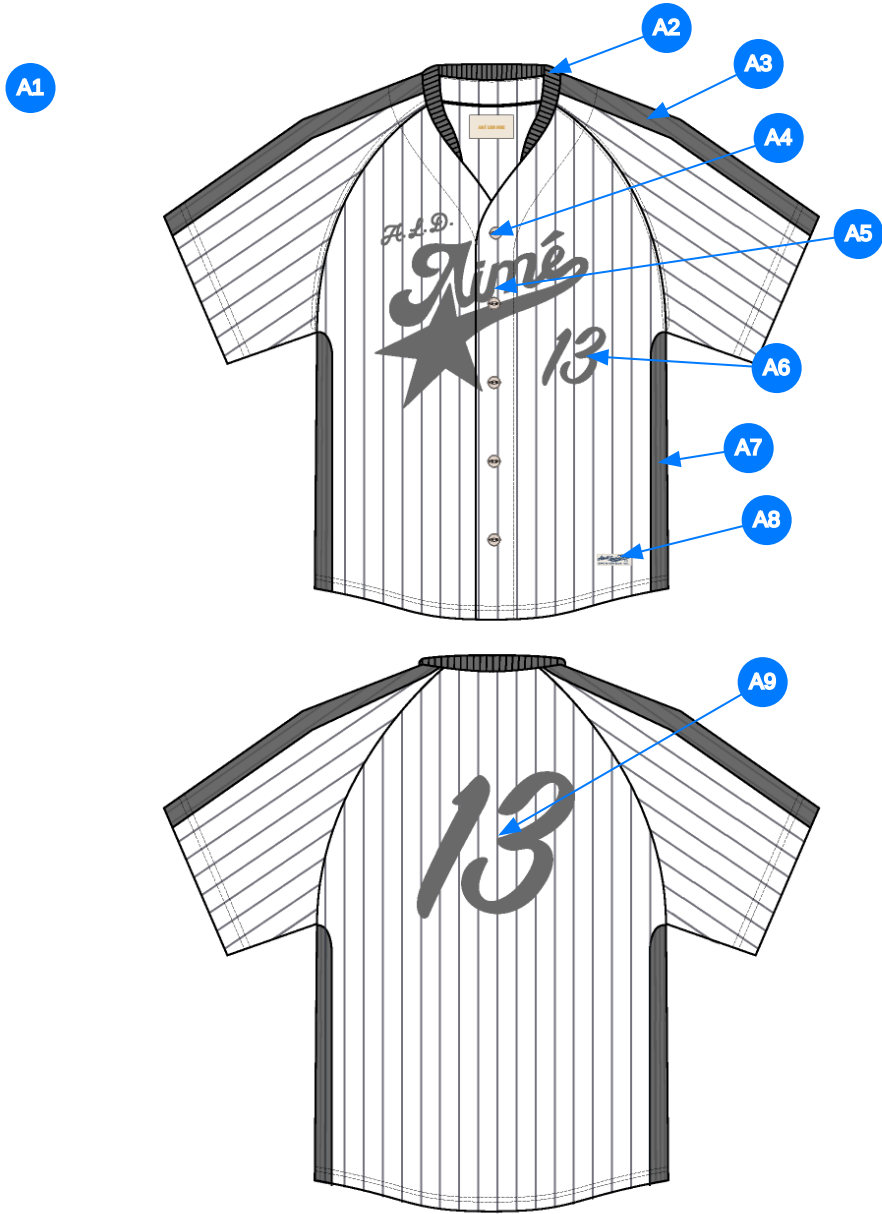
Name	Baseball Jersey
Style No.	SS26CT015
Division	Mens
Category	Tees
Season	Spring/Summer
Year	2026
Size Scale	<div>M</div> -Sample size <div><div>XS</div><div>S</div><div>M</div><div>L</div><div>XL</div><div>XXL</div></div>
Style Status	Development
Factory	UN-AVAILABLE
Designer Name	Wes
TD Name	Anastasiya
Created by/Author	3/12/2025 Jeni Fitzgerald jeni.fitzgerald@aimeleondore.com



1_B&W-1



2_CLR-1

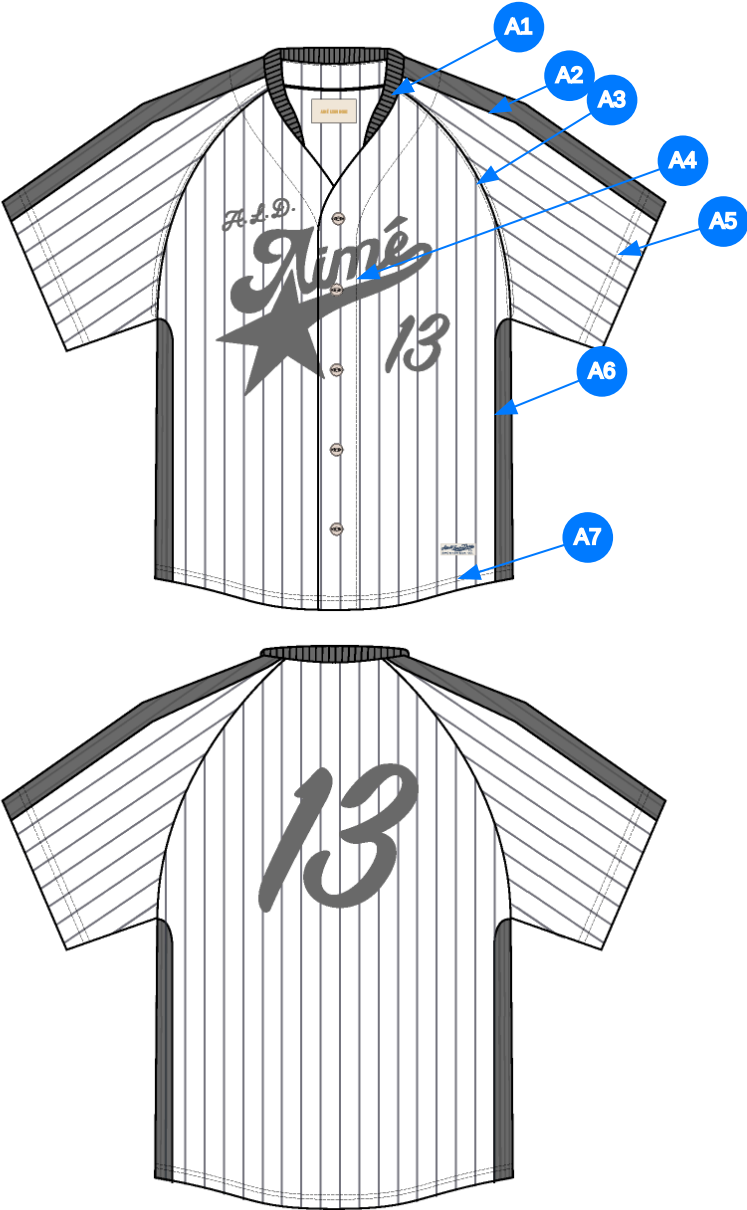


Comments (9)

- A1 FIT: SEE ATTACHED REFERENCE
- A2 1X1 RIB DOUBLED @ COLLAR
- A3 TOP APPLIED DROP NEEDLE PANELING @ SHOULDER
- A4 BUTTON CLOSURE @ CF - PLACKET FACING IN SELF
- A5 ARTWORK @ CF CHEST - SEE ADDITIONAL FILE FOR ARTWORK REFERENCE
- A6 ARTWORK @ CHEST - SEE ADDITIONAL FILE FOR ARTWORK DETAILS
- A7 TOP APPLIED DROP NEEDLE PANELING @ SIDE BODY
- A8 ALD SPORTSWEAR CO. LABEL @ WL BOTTOM HEM
- A9 ARTWORK @ CB - SEE ADDITIONAL FILE FOR ARTWORK DETAILS

- 1.fit: tham khảo mẫu hình đính kèm
- 2. rib tại bo cổ
- 3. miếng đắp phối tại vai
- 4. nút tại nếp giữa trước - nẹp bằng vải chính
- 5. artwork tại giữa trước
- 6. artwork tại giữa trước
- 7. miếng đắp phối tại sườn
- 8. nhãn trang trí tại lai trái
- 9. artwork tại thân sau

3_Construction Details-1



Comments (7)

- A1** 1/8" SN TS @ COLLAR
- A2** SN TS @ SHOULDER PANEL
- A3** STRADDLE STITCH @ ARMHOLE
- A4** SN TS @ PLACKET
- A5** 1/4" DN TS @ ARMHOLE
- A6** SN TS @ SIDE BODY PANEL
- A7** 1/4" DN TS @ BOTTOM HEM

- 1. điều 1 kim 1/8" tại cổ
- 2. điều 1 kim tại phối vai
- 3. điều rẽ tại nách
- 4. điều 1 kim tại nếp giữa trước
- 5. điều 2 kim 1/4" tại lai áo
- 6. điều 1 kim tại phối sườn
- 7. điều 2 kim 1/4" tại lai áo

4_Stitching Details-1

**BODY CONSTRUCTION REFERENCE
LOOKING FOR DROP NEEDLE PANELING**



5_Body Reference-1

Sample Size: M

POINT OF MEASURE	CODE	HOW TO MEASURE	CRITICAL	TYPE	TOLERANCE	M
Front Body Length	S&K01	HPS to bottom edge	true	Full	1/4 in	29 in
Back Body Length	S&K02	CB neck seam to bottom edge	true	Full	1/4 in	28 1/2 in
Front Raglan Seam Placement at Neck	S&K038	HPS to raglan seam along the neckline	false	Full	1/8 in	2 1/4 in
Back Raglan Seam Placement at Neck	S&K039	HPS to raglan seam along neckline	false	Full	1/8 in	1 1/4 in
Raglan Shoulder Slope	S&K037	9 1/2" out from CB, at HPS line	false	Full	1/8 in	0 in
Front Neck Drop	S&K04	HPS to neck seam	false	Full	1/8 in	5 1/2 in
Back Neck Drop	S&K05	HPS to neck seam	false	Full	1/8 in	3/4 in
Back Neck Width	S&K06	Seam to seam at back neck, at HPS point	false	Full	1/4 in	7 1/4 in
Across Front	S&K010	7" dwn from HPS, Seam to seam	false	Half	1/4 in	14 1/2 in
Across Back	S&K011	7" dwn from HPS, Seam to Seam	false	Half	1/4 in	15 3/4 in
Chest Width	S&K012	1" Below armhole- edge to edge	true	Half	1/4 in	24 in
Bottom Opening Width- At Edge	S&K013	At bottom edge	true	Half	1/4 in	24 in
Bottom Hem Height	S&K014	Bottom edge to stitch line or trim seam	false	Full	1/8 in	3/8 in
Sleeve Length from CB Neck	S&K032	3-point measure from CB Neck to shoulder point to sleeve edge	true	Full	1/2 in	19 in
Armhole Drop	S&K016	Below HPS - measure perpendicular	false	Full	1/4 in	12 1/2 in
Bicep Width	S&K017	1" below armhole- edge to edge	false	Half	1/4 in	9 3/4 in
Sleeve Opening Width- At Edge	S&K73	At edge	false	Half	1/4 in	8 1/2 in
Sleeve Hem Height	Ei5XWI		false	Full	1/8 in	1 in
CF Placket Width	S&K082	Width of placket edge to edge	false	Full	1/8 in	2 1/4 in
1st Button Placement from CF Neck Edge to Button Center	S&K177		false	Full	1/8 in	1 1/2 in
Last Button Placement Up from Hem	S&K374		false	Full	1/8 in	4 3/4 in
Shirt Tail Height	S&K099		true	Full	1/8 in	2 in
Top Applied Drop Needle Width	qFtwf2	At Shoulder/Sleeve/Side Seam	true	Full	1/8 in	2 in
Neck Trim Height	S&K254	Neck Seam to trim edge (before folded)	false	Full	1/8 in	7/8 in
CF Artwork Placement below Neck Top Edge	S&K112		false	Full	1/8 in	2 in
CB Artwork Placement below CB Neck Seam	S&K109	From CB Neck Seam to Top Edge of Artwork	false	Full	1/8 in	3 1/2 in

Development Notes - Anastasiya Zolotova

CREATED ON MAR 10, 2025 5:17 AM

SS26CT015 Baseball Jersey
Date: 3/9/24
Status:Requesting 1st Proto
TD: Anastasiya

- Fit: Please follow measurement page, design sketch, and construction page.
- Please ensure to have separate facing as image
 - Please ensure to have enough underarm width when creating pattern
 - Follow sketch for where rib trim stops at front neck

fit: tham khảo trang thôn số, trang sketch, và trang cấu trúc


- tham khảo nếp giữa như hình bên dưới
- đảm bảo có đủ rộng nách khi làm rập
- tham khảo sketch cho điểm kết thúc rib tại cổ trước

SS26CT015 Baseball Jersey

-Please ensure to have separate facing as image



Screen Shot 2025-03-10 at 1.33.11 AM.jpg

COMPONENT		QTY	1.  PROTO
FABRIC			
1	IN DEV CODE: TBD Placement: BODY, FACING Notes: FOLLOW REFERENCE SAMPLE		- IN DEV Price: 0.00
2	IN DEV CODE: TBD Placement: TOP APPLIED SHOULDER AND SIDE BODY PANELS Notes: DROP NEEDLE, FOLLOW REFERENCE SAMPLE		- IN DEV Price: 0.00
3	IN DEV CODE: TBD Placement: NECK TRIM Notes: 1X1 RIB, DOUBLED; PLS ADVISE ARTICLE #		- IN DEV Price: 0.00
4	Cateye Shell Button CODE: ALD-SHL-104 Placement: CF PLACKET Notes: 5PC + 1 EXTRA Supplier: Titan	6	- Cateye Shell Button SIZE: 28L Price: 0.00
5	ARTWORK CODE: AS CORRESPONDING FILE Placement: CF CHEST Notes: FOLLOW ARTWORK FILE AND POM Supplier: Factory Sourced		- ARTWORK Price: 0.00
6	ARTWORK CODE: AS CORRESPONDING FILE Placement: CB BODY Notes: FOLLOW ARTWORK FILE AND POM Supplier: Factory Sourced		- ARTWORK Price: 0.00
LABEL AND TRIM PACKAGE			
7	ALD Woven Main Label W/ Size CODE: ALD-ML03 Placement: INTERIOR CENTER BACK NECK Notes: FOLLOW POM Supplier: Colonial Country of Origin: CHINA	1 Piece	- ALD Woven Main Label W/ Size Price: 0.079
8	Queens, NY Sportswear Co. ALD Label CODE: 2024070180 Placement: WL HEM Notes: FOLLOW POM Supplier: Shining	2 Piece	- Queens, NY Sportswear Co. ALD Label Price: 0.46
Components 8			Total 0.999