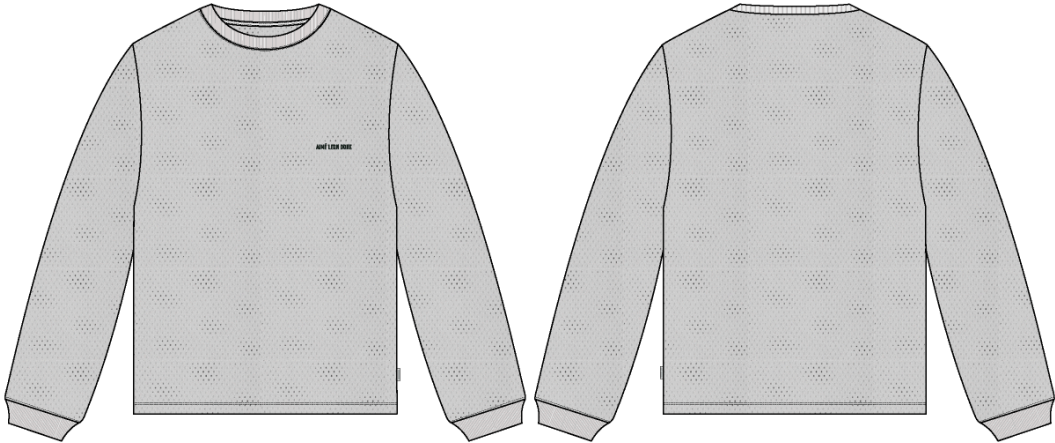


Mesh LS Tee

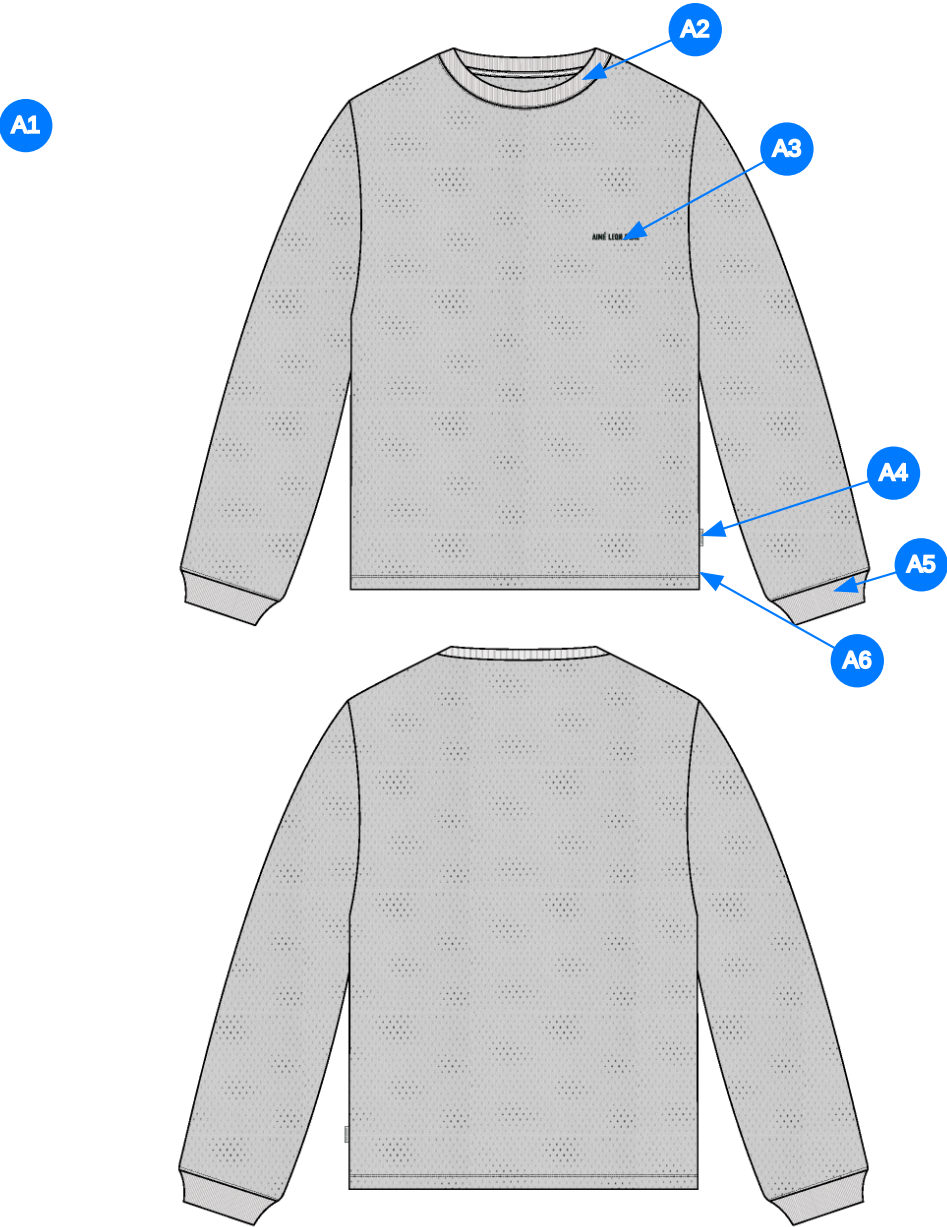
Name	Mesh LS Tee
Style No.	SS26CT019
Division	Mens
Category	Tees
Season	Spring/Summer
Year	2026
Size Scale	<div>M</div> -Sample size <div><div>XS</div><div>S</div><div>M</div><div>L</div><div>XL</div><div>XXL</div></div>
Style Status	Development
Factory	UN-AVAILABLE
Designer Name	Wes
TD Name	Anastasiya
Created by/Author	3/12/2025 Jeni Fitzgerald jeni.fitzgerald@aimeleondore.com



1_B&W-1



2_CLR-1

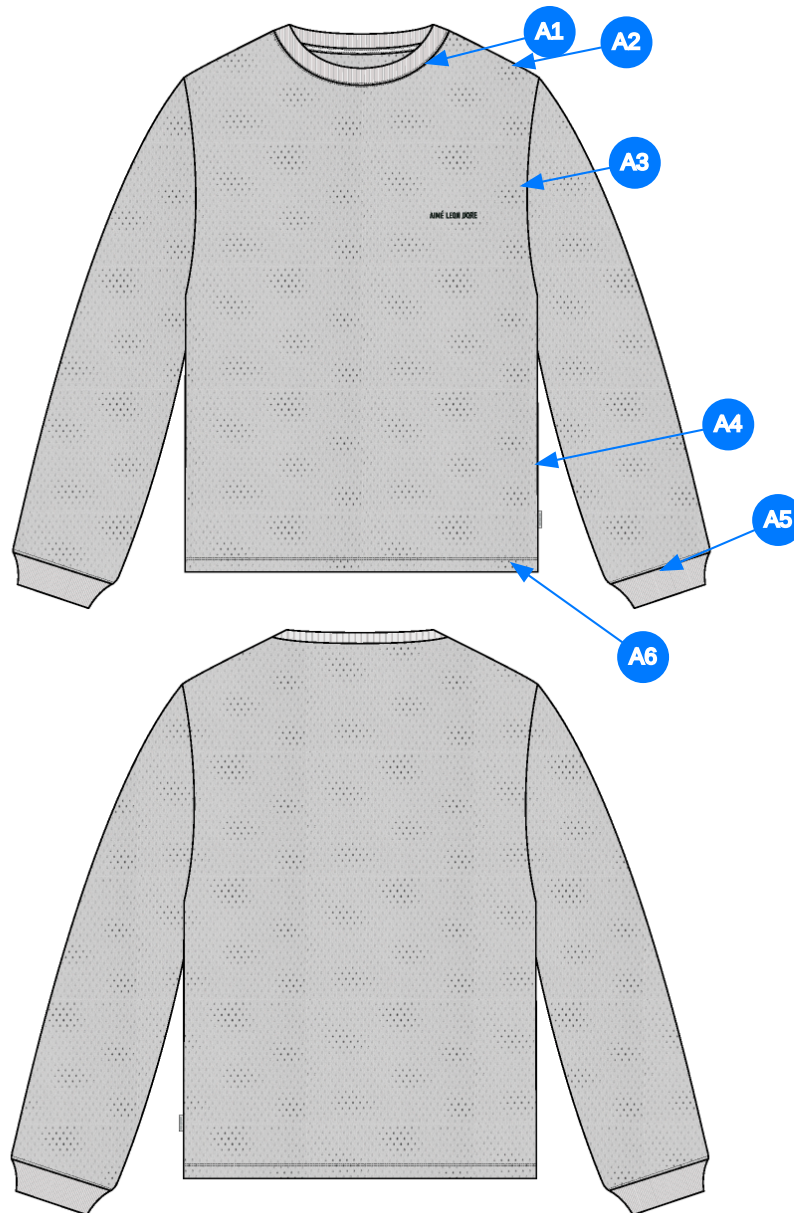


3_Construction Details-1

Comments (6)

- A1 FIT: LS TEE FIT BLOCK
- A2 1X1 RIB DOUBLED @ NECK - JERSEY TAPE ALONG BACK NECK
- A3 ARTWORK @ WL CHEST - SEE ADDITIONAL FILE FOR ARTWORK DETAILS
- A4 ALD WOVEN LABEL @ SIDE SEAM
- A5 1X1 RIB DOUBLED @ SLEEVE CUFF
- A6 VENT @ SIDE SEAM - TURNBACK W/ COVERLOCK STITCH

- 1. fit tham khảo LS TEE FIT BLOCK
- 2. rib tại bo cổ - viền cổ sau bằng vải chính
- 3. hình thêu tại ngực trái
- 4. nhãn cờ tại sườn ngoài
- 5. rib tại bo tay
- 6. xẻ lai tại đường may sườn



Comments (6)

- A1** STRADDLE STITCH @ NECK
- A2** CLEAN SEAM @ SHOULDER
- A3** CLEAN SEAM @ ARMHOLE
- A4** CLEAN SEAM @ SIDE SEAM
- A5** STRADDLE STITCH @ SLEEVE CUFF
- A6** 1/4" DN TS @ BOTTOM HEM

1. điều rỗ tại đường may cổ
2. may sạch tại đường may vai
3. may sạch tại đường may nách
4. may sạch tại đường may sườn
5. điều rỗ tại đường may tay
6. điều 2 kim 1/4" tại lai áo

4_Stitching Details-1

Sample Size: M

POINT OF MEASURE	CODE	HOW TO MEASURE	CRITICAL	TYPE	TOLERANCE	M
Front Body Length	S&K01	HPS to bottom edge	true	Full	1/4 in	28 in
Back Body Length	S&K02	CB neck seam to bottom edge	true	Full	1/4 in	27 1/4 in
Shoulder Seam Forward	S&K07	HPS to seam	false	Full	1/8 in	1/2 in
Shoulder Slope	S&K08	Shoulder point perpendicular to HPS	false	Full	1/4 in	2 1/4 in
Front Neck Drop	S&K04	HPS to neck seam	false	Full	1/8 in	4 1/4 in
Back Neck Drop	S&K05	HPS to neck seam	false	Full	1/8 in	3/4 in
Back Neck Width	S&K06	Seam to seam at back neck, at HPS point	false	Full	1/4 in	7 3/4 in
Neck Trim Height	S&K020	Neck Seam to trim edge	false	Full	1/8 in	7/8 in
Minimum Neck Stretch	S&K199		true	Half	0 in	11 1/2 in
Across Shoulder	S&K09	Seam to seam	false	Half	1/4 in	18 1/2 in
Across Front/Across Back Position from HPS	eos7YR		true	Full	0 in	7 in
Across Front	S&K010	Down from HPS, Seam to seam	false	Half	1/4 in	16 1/2 in
Across Back	S&K011	Down from HPS, Seam to Seam	false	Half	1/4 in	17 in
Chest Width	S&K012	1" Below armhole- edge to edge	true	Half	1/4 in	21 in
Bottom Opening Width- At Edge	S&K013	At bottom edge	true	Half	1/4 in	21 in
Bottom Hem Height	S&K014	Bottom edge to stitch line or trim seam	false	Full	1/8 in	3/4 in
Sleeve Length from CB Neck	S&K032	3-point measure from CB Neck to shoulder point to sleeve edge	true	Full	1/2 in	34 1/2 in
Armhole Drop	S&K016	Below HPS - measure perpendicular	false	Full	1/4 in	11 1/4 in
Bicep Width	S&K017	1" below armhole- edge to edge	false	Half	1/4 in	8 in
Forearm Width	S&K033	9" up from sleeve cuff edge	false	Half	1/4 in	6 3/4 in
Sleeve Opening Width- At Seam	S&K034	Width at Seam	false	Half	1/4 in	5 in
Sleeve Opening Width- At Edge	S&K73	At edge	false	Half	1/4 in	3 3/4 in
Sleeve Cuff Height	S&K36	Cuff edge to seam	false	Full	1/8 in	2 1/2 in
Loop Label Placement at Sideseam	S&K023	Bottom edge to bottom of loop label, at the WL side seam	false	Full	1/8 in	7 in

Development Notes - Anastasiya Zolotova

CREATED ON MAR 10, 2025 4:39 AM

SS26CT019 Mesh LS Tee

Date: 3/9/24

Status:Requesting 1st Proto

TD: Anastasiya

Fit: Please follow SS25CT016 LS Leon Dore Tee.

COMPONENT		QTY	1.  PROTO
FABRIC			
1	IN DEV CODE: TBD Placement: BODY, SLEEVES Notes: FOLLOW REFERENCE SAMPLE		- IN DEV Price: 0.00
2	S24-FRPL01 CODE: UA Poly Rib Placement: NECK TRIM, SLEEVE CUFF TRIM Notes: 1X1 RIB, DOUBLED Supplier: UNAVAILABLE		-  Undefined Price: 0.00
3	ARTWORK CODE: AS CORRESPONDING FILE Placement: WL CHEST Notes: FOLLOW ARTWORK AND POM Supplier: Factory Sourced		- ARTWORK Price: 0.00
LABEL AND TRIM PACKAGE			
4	ALD Woven Loop Label CODE: ALD-ML02 Placement: WL SIDE SEAM Notes: FOLLOW POM Supplier: Colonial	1	-  Parmesan Base / Gold Text Price: 0.00
5	ALD Woven Main Label W/ Size CODE: ALD-ML03 Placement: INTERIOR CENTER BACK NECK Notes: FOLLOW POM Supplier: Colonial Country of Origin: CHINA	1 Piece	- ALD Woven Main Label W/ Size Price: 0.079
Components 5			Total 0.079