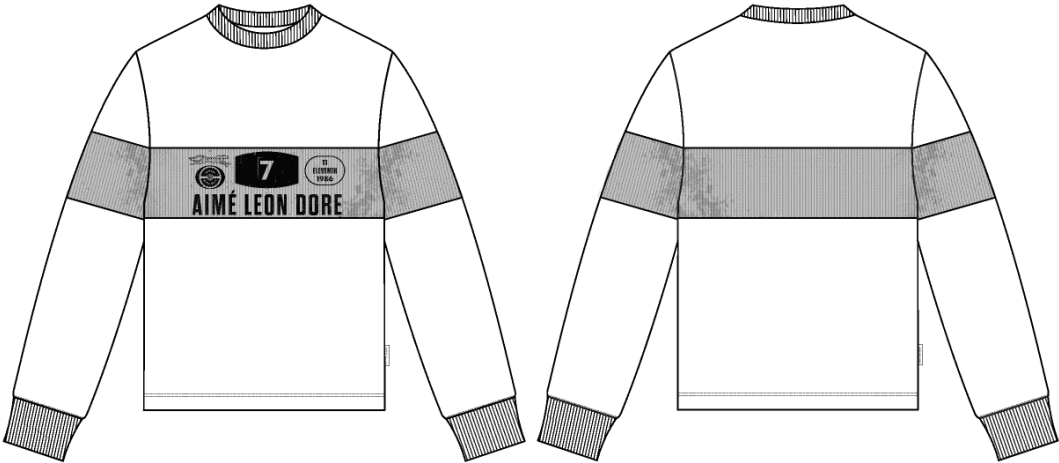


LS Rally Tee

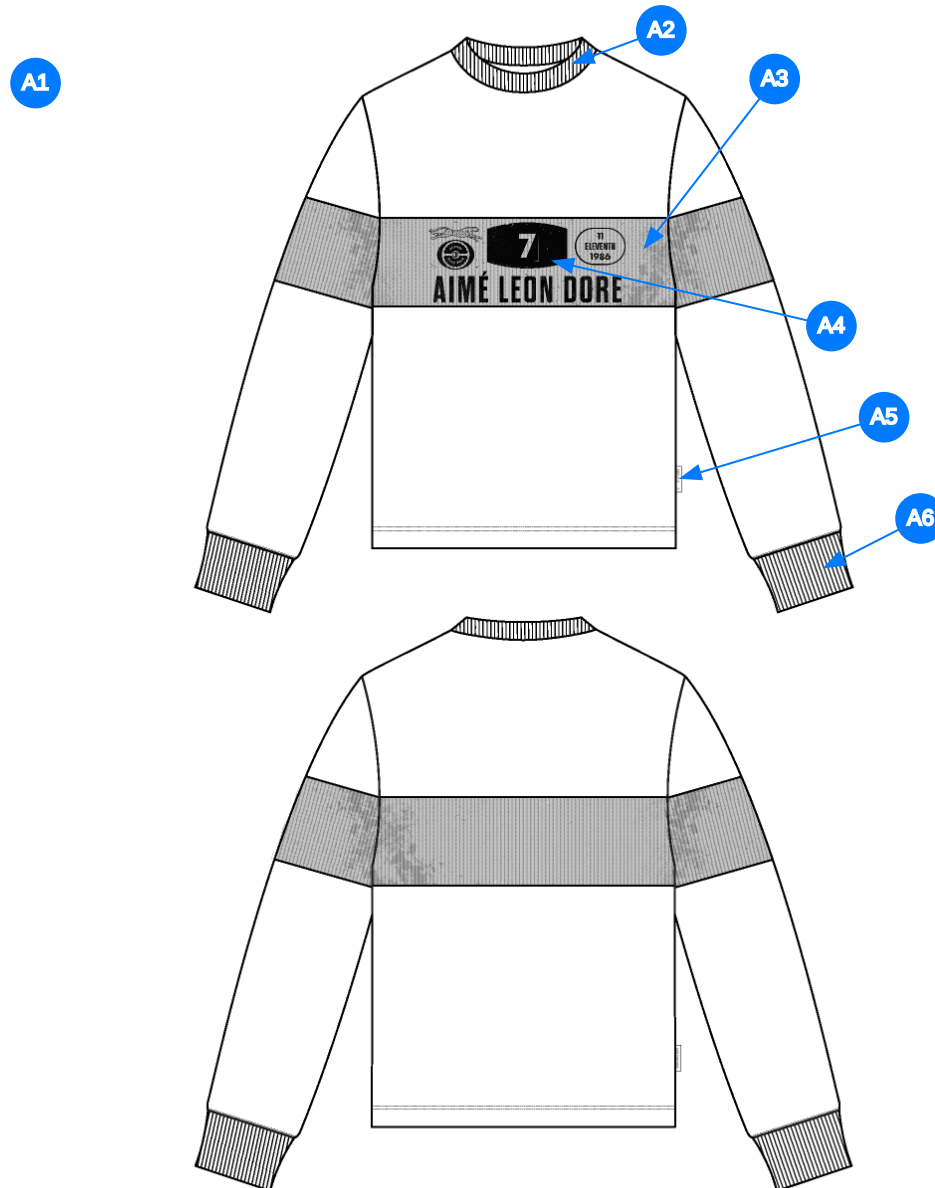
Name	LS Rally Tee
Style No.	SS26CT025
Division	Mens
Category	Tees
Season	Spring/Summer
Year	2026
Size Scale	<div>M</div> -Sample size <div><div>XS</div><div>S</div><div>M</div><div>L</div><div>XL</div><div>XXL</div></div>
Style Status	Development
Factory	UN-AVAILABLE
Designer Name	Wes
TD Name	Anastasiya
Created by/Author	3/12/2025 Jeni Fitzgerald jeni.fitzgerald@aimeleondore.com



1\_B&W-1



2\_CLR-1

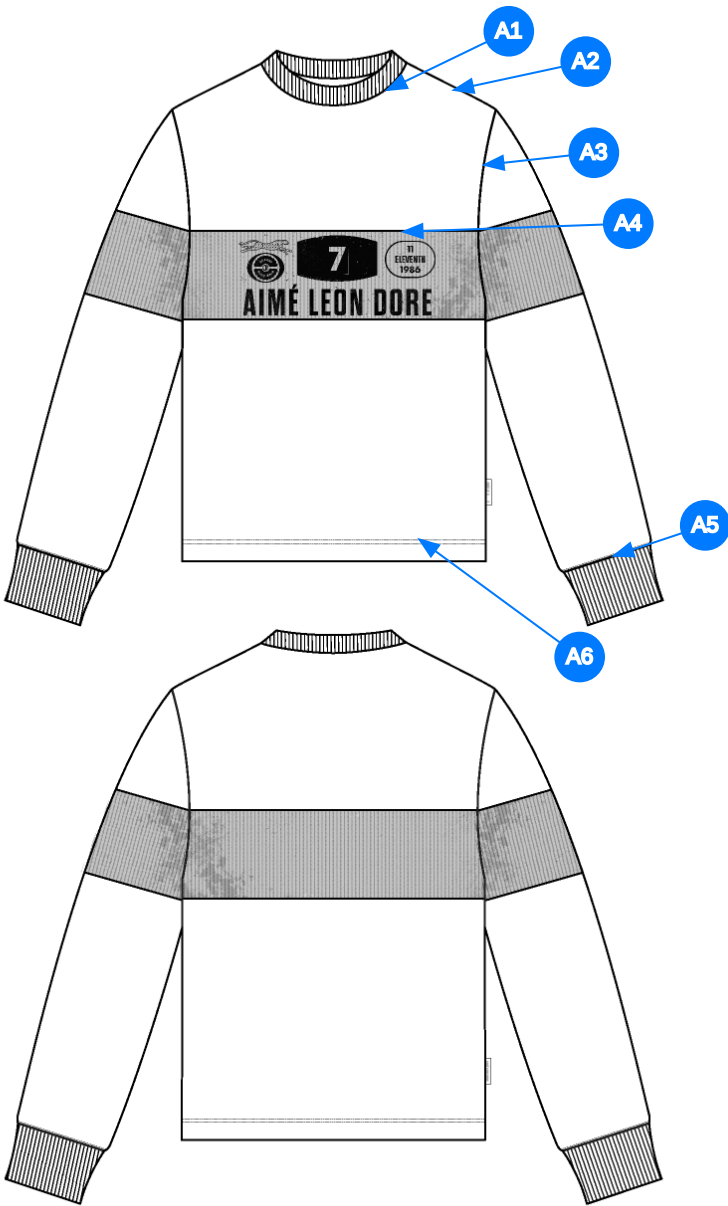


Comments (6)

- A1** LS MOTO JERSEY (SS25CT031)
- A2** 1X1 RIB DOUBLED @ NECK
- A3** SET IN MESH PANEL @ BODY & SLEEVES
- A4** ARTWORK @ MESH PANEL
- A5** ALD WOVEN LABEL @ SIDE SEAM
- A6** 1X1 COTTON RIB DOUBLED @ SLEEVE CUFF

1. fit tham khảo mã SS25CT031
2. rib 1x1 tại cổ
3. phối tại thân và tay
4. artwork tại phối mesh
5. nhãn cờ tại sườn ngoài
6. rib 1x1 tại lại tay

3\_Construction Details-1



Comments (6)

- A1 1/4" SN TS @ NECK
- A2 CLEAN SEAM @ SHOULDER
- A3 CLEAN SEAM @ ARMHOLE
- A4 CLEAN SEAM @ MESH PANEL
- A5 CLEAN SEAM @ SLEEVE CUFF
- A6 1/4" DN TS @ BOTTOM HEM

- 1. điều 1 kim 1/4" tại cổ
- 2. may sạch tại đường may vai
- 3. may sạch tại nách
- 4. may sạch tại phối mesh
- 5. may sạch tại lai tay
- 6. điều 2 kim 1/4" tại lai áo

4\_Stitching Details-1

Sample Size: M

POINT OF MEASURE	CODE	HOW TO MEASURE	CRITICAL	TYPE	TOLERANCE	M
Front Body Length	S&K001	HPS to bottom edge	true	Full	1/4 in	27 1/2 in
Back Body Length	S&K002	CB neck seam to bottom edge	true	Full	1/4 in	26 3/4 in
Shoulder Seam Forward	S&K007	HPS to seam	false	Full	1/8 in	1/2 in
Shoulder Slope	S&K008	Shoulder point perpendicular to HPS	false	Full	1/4 in	2 in
Front Neck Drop	S&K004	HPS to neck seam	false	Full	1/8 in	4 1/4 in
Back Neck Drop	WV005	FROM HPS LEVEL STRAIGHT DOWN TO CB NECK SEAM	true	Full	1/8 in	3/4 in
Back Neck Width	S&K006	Seam to seam at back neck, at HPS point	false	Full	1/4 in	7 1/4 in
Neck Trim Height	S&K254	Neck Seam to trim edge (before folded)	false	Full	1/8 in	1 1/4 in
Across Shoulder Width- Seam to seam	S&K259	Seam to Seam	false	Full	1/4 in	18 in
Across Front/Across Back Position from HPS	eos7YR		true	Full	0 in	7 in
Across Front	S&K010	Straight Down from HPS, Seam Center to Seam Center	false	Half	1/4 in	15 3/4 in
Across Back	S&K011	Straight Down from HPS, Seam Center to Seam Center	false	Half	1/4 in	16 1/4 in
Chest Width	S&K012	1" Below armhole- edge to edge	true	Half	1/4 in	21 1/2 in
Bottom Opening Width- At Edge	S&K013	At bottom edge	true	Half	1/4 in	21 in
Bottom Hem Height	S&K014	Bottom edge to stitch line or trim seam	false	Full	1/8 in	1 in
Sleeve Length from CB Neck	S&K032	3-point measure from CB Neck to shoulder point to sleeve edge	true	Full	1/2 in	34 in
Armhole Drop	S&K016	Below HPS - measure perpendicular	false	Full	1/4 in	11 1/2 in
Bicep Width	S&K017	1" below armhole- edge to edge	false	Half	1/4 in	8 3/4 in
Forearm Width	S&K345	9" up from sleeve cuff edge	false	Half	1/4 in	6 1/2 in
Sleeve Opening Width 1" Above Rib Knit Seam	S&K		true	Half	1/4 in	5 1/4 in
Sleeve Opening Width- At Edge	S&K073	At edge	false	Half	1/4 in	3 3/4 in
Cuff Height	S&K036	Cuff edge to seam	false	Full	1/8 in	2 in
Side Slit Height	S&K093	From bottom edge to top of slit	false	Full	1/8 in	1 3/8 in
Panel Placement from HPS	SVX7VG		true	Full	1/8 in	9 1/2 in
Panel Height at Body and Sleeve	L8AcLL		true	Full	1/8 in	5 in
Loop Label Placement at Sideseam	S&K023	Bottom edge to bottom of loop label, at the WL side seam	false	Full	1/8 in	7 in

## Development Notes - Anastasiya Zolotova

CREATED ON MAR 10, 2025 3:31 AM

SS26CT025 LS Rally Tee

Date: 3/9/24

Status: Requesting 1st Proto






TD: Anastasiya

Fit: Please follow fit of SS25CT038 LS Mesh Tee w/below modifications:

- Please add set in panel, follow measurement page for placement and height
- Ensure panel matches at body and sleeve
- Increase neck trim height

fit: tham khảo mã SS25CT038 và điều chỉnh bên dưới:

1. thêm phối, vị trí và chiều cao theo trang thông số
2. đảm bảo phối thân và tay phải khớp với nhau
3. tăng to bản bo cổ

COMPONENT		QTY	1.  PROTO
FABRIC			
1	<b>TT-SJ30SX2-W120</b> CODE: UA CORE JERSEY Placement: BODY, CB NECK AH TO AH Notes: ADD LUNA DYE Supplier: UNAVAILABLE Width: CW: 120CM Weight: 240 GSM Country of Origin: VIETNAM		-  Jet Black Custom Code: 19-0303 TCX  Price: 0.00
2	<b>WYU2308-4</b> CODE: WYU2308-4 UA COTTON MESH Placement: BODY AND SLEEVE PANELS Notes: ADD LUNA DYE Supplier: UNAVAILABLE Width: 160CM Weight: 250GSM Country of Origin: VIETNAM		-  Coconut Milk Custom Code: 11-0608 TCX  Price: 7.20
3	<b>TT-RIB20SX2</b> CODE: UA CORE 1x1 RIB Placement: NECK TRIM, SLEEVE CUFF TRIN Notes: 1X1 RIB, DOUBLED Supplier: UNAVAILABLE		-  Jet Black Custom Code: 19-0303 TCX  Price: 0.00
4	<b>ARTWORK</b> CODE: AS CORRESPONDING FILE Placement: CF CHEST Notes: FOLLOW ARTWORK FILE AND POM Supplier: Factory Sourced		- ARTWORK  Price: 0.00
LABEL AND TRIM PACKAGE			
5	<b>ALD Woven Loop Label</b> CODE: ALD-ML02 Placement: WL SIDE SEAM Notes: FOLLOW POM Supplier: Colonial	1	-  Parmesan Base / Gold Text  Price: 0.00
6	<b>ALD Woven Main Label W/ Size</b> CODE: ALD-ML03 Placement: INTERIOR CENTER BACK NECK Supplier: Colonial Country of Origin: CHINA	1 Piece	- ALD Woven Main Label W/ Size  Price: 0.079
Components 6			Total 0.567