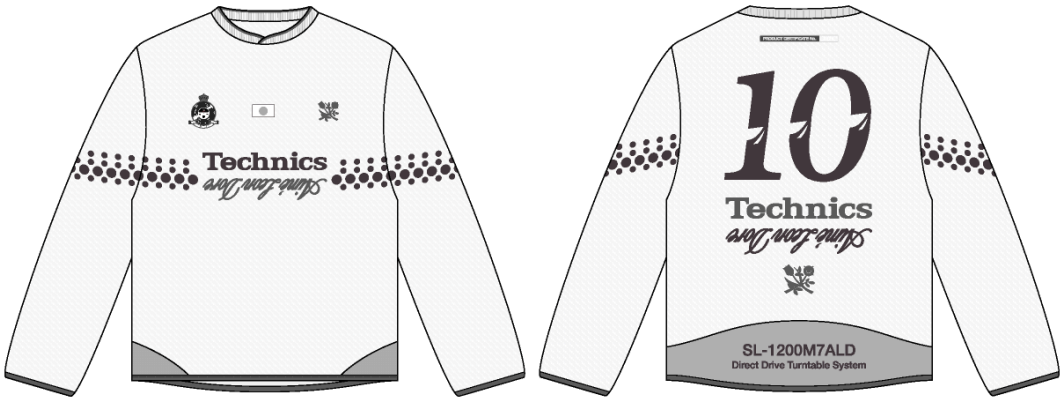


LS Technics Soccer Jersey

Name	LS Technics Soccer Jersey
Style No.	SS26CT095
Division	Mens
Category	Jerseys
Season	Spring/Summer
Year	2026
Size Scale	<div>M</div> -Sample size <div>XS</div> <div>S</div> <div>M</div> <div>L</div> <div>XL</div> <div>XXL</div>
Style Status	Adopted
Factory	UN-AVAILABLE
Designer Name	Wes
TD Name	Anastasiya
Created by/Author	6/13/2025 Anastasiya Zolotova anastasiya.zolotova@aimeleondore.com



1_B&W-1

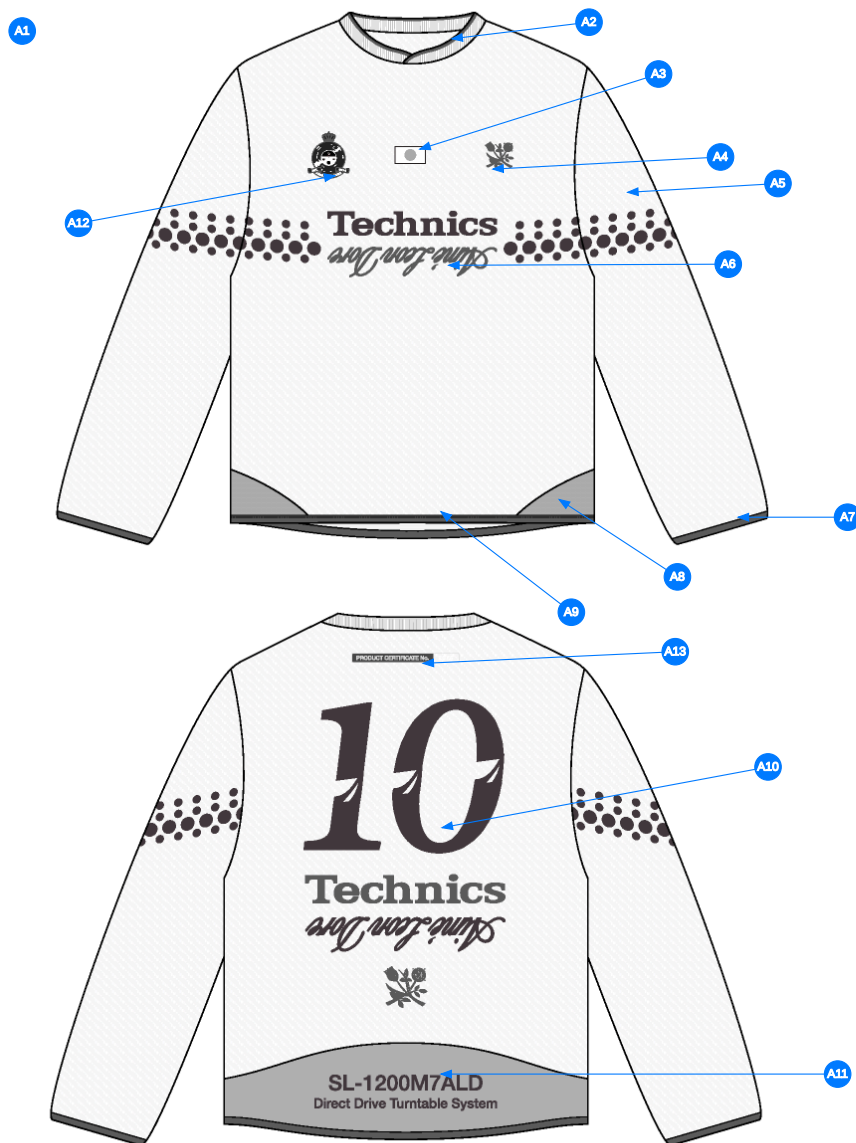


JET BLACK



BRIGHT WHITE

2_CLR-1

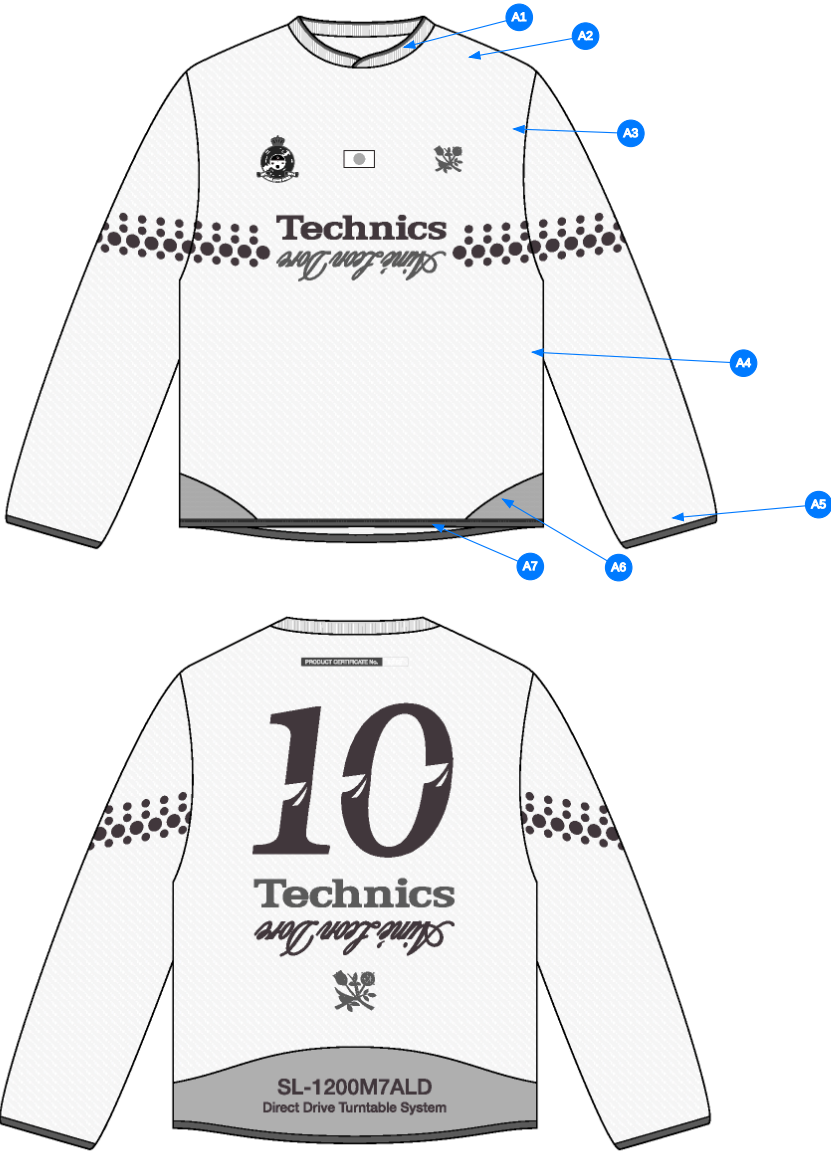


3_Construction Details-1

Comments (13)

- A1** FIT: NB RC56 SOCCER JERSEY (NB25CT003)
- A2** 1X1 RIB DOUBLED W/ TIPPING @ NECK - SEE SEPARATE FILE FOR ARTWORK DETAILS - OVERLAP @ CF
- A3** ARTWORK @ CF CHEST
- A4** ARTWORK @ WL CHEST
- A5** ARTWORK @ SLEEVES - SEE SEPARATE FILE FOR ARTWORK DETAILS
- A6** ARTWORK @ CF
- A7** ELASTIC BINDING @ SLEEVE OPENING
- A8** SET IN PANEL @ BOTTOM HEM - ONE PANEL MESH @ SIDE SEAM
- A9** POLY BINDING @ BOTTOM HEM
- A10** ARTWORK @ CB
- A11** SET IN PANEL @ BOTTOM HEM - SEE SEPARATE FILE FOR DETAILS
- A12** ARTWORK @ WR CHEST
- A13** ARTWORK @ CB NECK

1. fit: tham khảo NB25CT003
2. rib 2 lớp tại cổ - cấu trúc chồng lên nhau tại giữa trước
3. hình in tại giữa trước
4. hình in tại ngực trái
5. hình in tại tay
6. hình in tại giữa trước
7. thun viền tại lại tay
8. phối tại sườn lại
9. thun viền tại lại áo
10. hình in giữa thân sau
11. phối lại thân sau
12. hình in ngực phải
13. hình in giữa cổ sau



Comments (7)

- A1** 1/8" SN TS @ NECK
- A2** CLEAN SEAM @ SHOULDER SEAM
- A3** CLEAN SEAM FINISH @ ARMHOLE
- A4** CLEAN SEAM FINISH @ SIDE SEAM
- A5** EDGE STITCH @ BINDING
- A6** 1/8" SN TS @ SET IN PANELS
- A7** EDGE STITCH @ BINDING

- 1. điều 1 kim 1/8" tại cổ
- 2. may sạch tại đường may vai
- 3. may sạch tại nách
- 4. may sạch tại đường may sườn
- 5. mí điều tại viền lai tay
- 6. điều 1 kim 1/8" tại phối
- 7. mí điều tại viền lai áo

4_Stitching Details-1

RIB ARTWORK
- ARTWORK IS NOT SHOWN TO SCALE BELOW



BRIGHT WHITE C/W



VIOLET INDIGO C/W



	PANTONE 19-3750 TCX Violet Indigo		PANTONE Bright White White		PANTONE BLACK C BLACK		PANTONE Bright White White
---	---	---	----------------------------------	---	-----------------------------	---	----------------------------------

EXECUTION REFERENCE



Rib Artwork (NECK)-1

tham khảo cấu trúc bo cổ

NECK CONSTRUCTION REFERENCE



Neck Construction Reference-1

Sample Size: M

POINT OF MEASURE	HOW TO MEASURE	CRITICAL	TYPE	TOLERANCE	M
Front Body Length	HPS to bottom edge	true	Full	1/2 in	27 3/4 in
Back Body Length	CB neck seam to bottom edge	true	Full	1/2 in	27 in
Shoulder Seam Forward	HPS to seam	false	Full	1/8 in	1/2 in
Shoulder Slope	Shoulder point perpendicular to HPS	false	Full	1/4 in	2 in
Front Neck Drop	HPS to neck seam	false	Full	1/8 in	4 1/4 in
Back Neck Drop	FROM HPS LEVEL STRAIGHT DOWN TO CB NECK SEAM	true	Full	1/8 in	3/4 in
Back Neck Width	Seam to seam at back neck, at HPS point	false	Full	1/4 in	7 1/2 in
Neck Trim Height	Neck Seam to trim edge (before folded)	false	Full	1/8 in	7/8 in
Across Shoulder Width- Seam to seam	Seam to Seam	false	Full	1/4 in	18 1/2 in
Across Front	7" dwn from HPS, Seam to seam	false	Half	3/8 in	16 in
Across Back	7" dwn from HPS, Seam to Seam	false	Half	3/8 in	16 1/2 in
Chest Width	1" Below armhole- edge to edge	true	Half	1/2 in	22 1/4 in
Bottom Opening Width- At Edge	At bottom edge	true	Half	1/2 in	22 1/4 in
Bottom Binding height		false	Full	1/8 in	1/2 in
Sleeve Length from CB Neck	3-point measure from CB Neck to shoulder point to sleeve edge	true	Full	1/2 in	34 1/4 in
Armhole Drop	Below HPS - measure perpendicular	false	Full	1/4 in	11 1/2 in
Bicep Width	1" below armhole- edge to edge	false	Half	1/4 in	8 3/4 in
Forearm Width	9" up from sleeve cuff edge	false	Half	1/4 in	6 3/4 in
Sleeve Opening Width 1" Above Cuff Seam		true	Half	1/4 in	5 1/4 in
Sleeve Opening Width- At Edge	At edge	false	Half	1/4 in	4 1/4 in
Sleeve Binding Height		false	Full	1/8 in	1/2 in
WL Artwork Placement from HPS to Top Edge		true	Full	1/8 in	7 1/4 in
WL Artwork Placement Out from Edge of Laser Artwork		false	Full	1/8 in	2 1/4 in
WR Chest Artwork Centered on WL Artwork		true	Full	1/8 in	0 in
WR Chest Artwork Placement Out from CF Line		false	Full	1/8 in	2 1/4 in
WL Sleeve Artwork Placement from Shoulder Seam		true	Full	1/8 in	4 1/4 in
WR Sleeve Artwork Placement from Shoulder Seam		true	Full	1/8 in	4 1/4 in
WL/WR Sleeve Artwork Centered on Sleeve Fold		true	Full	1/8 in	0 in
CB Artwork Placement Below CB Neck Seam		false	Full	1/8 in	4 1/2 in
Back Artwork Centered on Bottom Back Panel		true	Full	1/8 in	0 in
Back Panel Height		true	Full	1/8 in	5 in
Front Panel Height At Side Seam		true	Full	1/8 in	3 in

Development Notes - Anastasiya Zolotova

CREATED ON NOV 14, 2024 5:07 PM

SS26CT095 LS TECHNICS SOCCER JERSEY
Date: 6/13/25
Status: Requesting 1st Fit
TD: Anastasiya

Fit: Follow measurement page, construction page, and design sketch to make 1st proto.

fit: tham khảo trang thông số, trang cấu trúc, và sketch để làm mẫu 1st proto