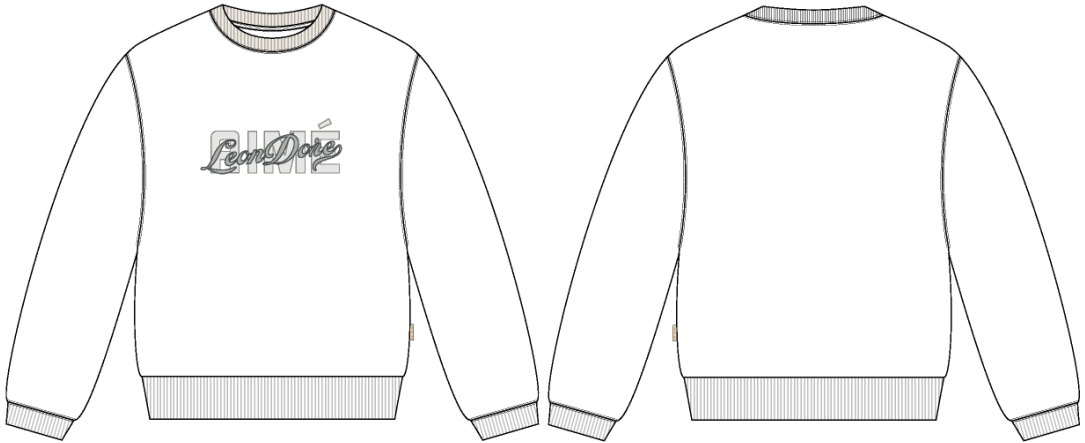


Name	ALD Logo Crewneck
Style No.	SS26CS007
Division	Mens
Category	Sweatshirts
Season	Spring/Summer
Year	2026
Size Scale	M -Sample size
	XS S M L XL XXL
Style Status	Adopted
Factory	UN-AVAILABLE
Designer Name	Wes
TD Name	Anastasiya
Created by/Author	8/27/2025 Anastasiya Zolotova anastasiya.zolotova@aimeleondore.com

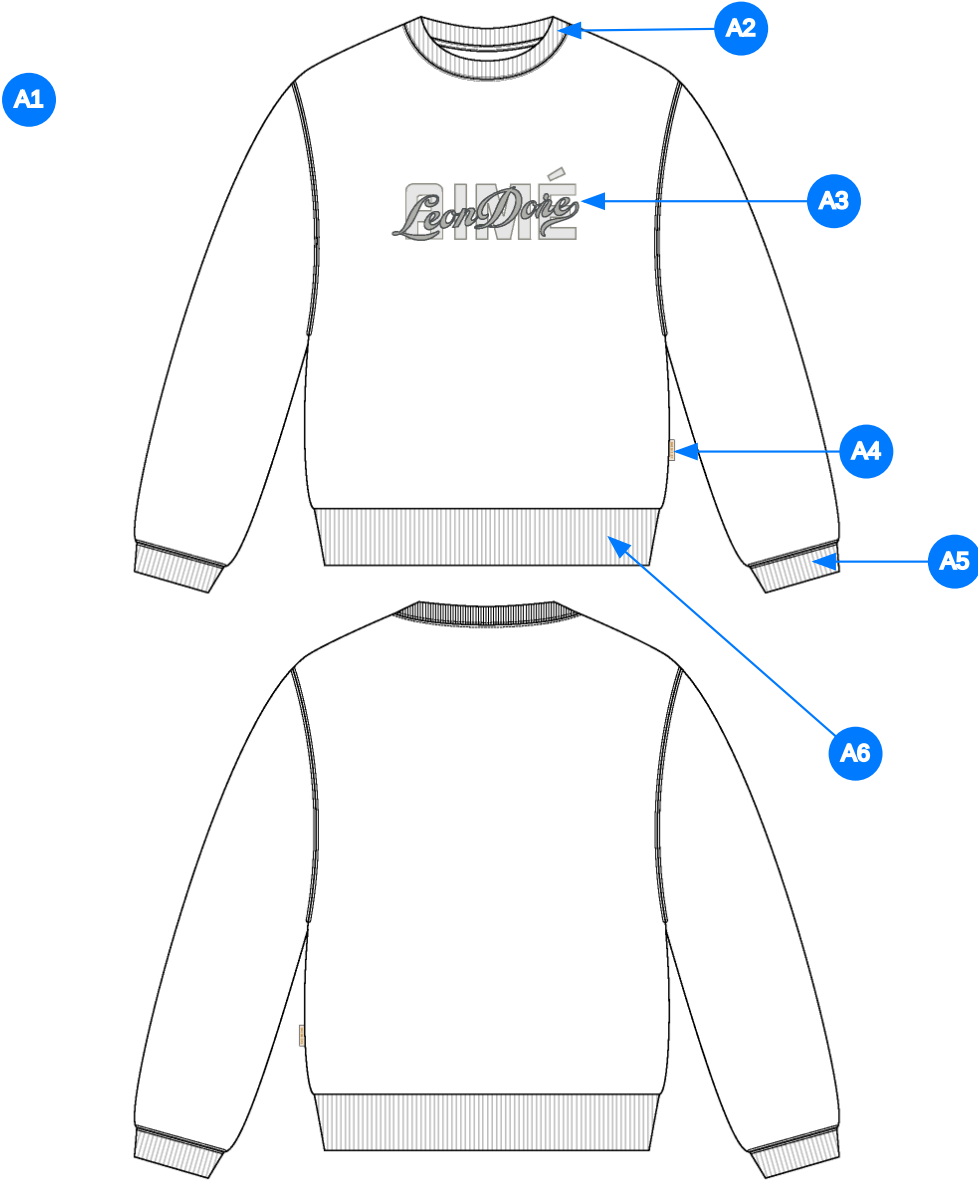
ALD Logo Crewneck



1_B&W-1



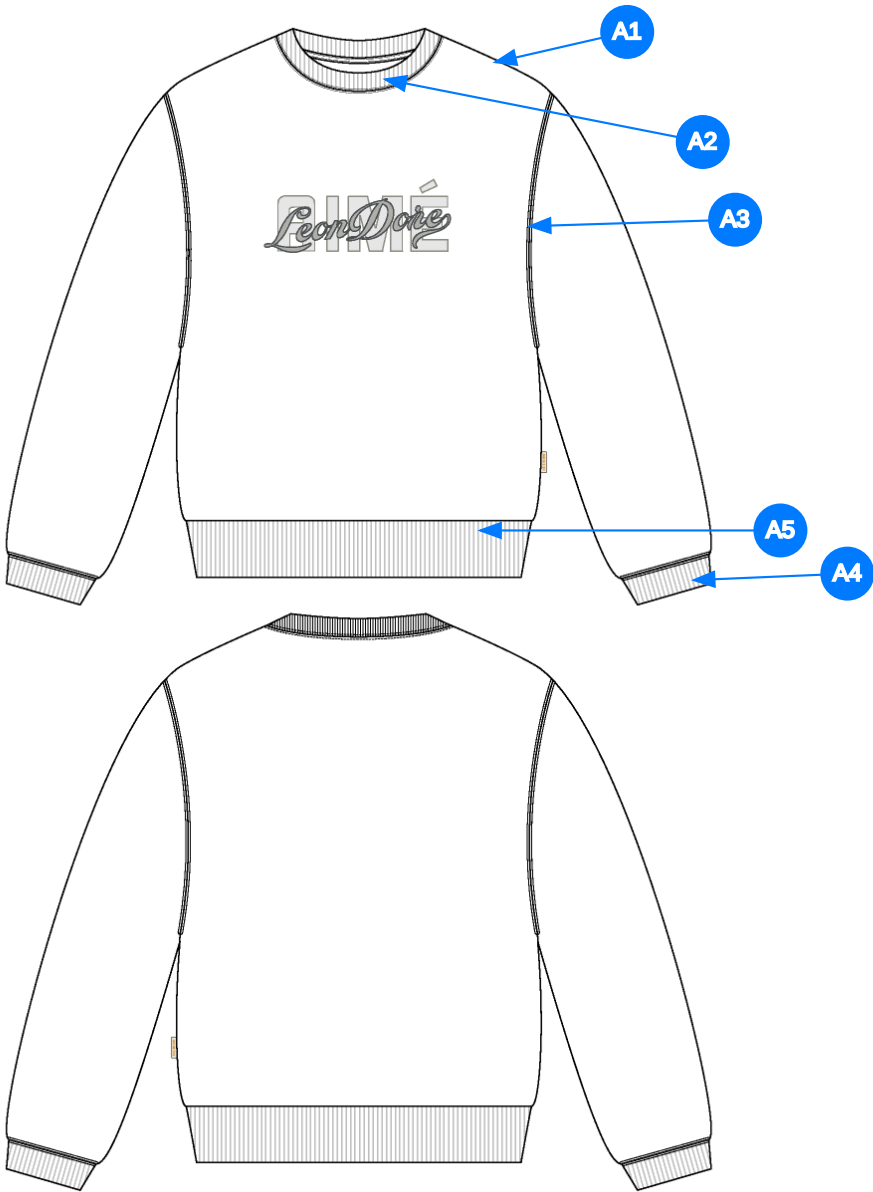
2_CLR-1



Comments (6)

- A1 Fit: Drop Shoulder Fit
- A2 2x2 BOUND RIB @COLLAR
- A3 ARTWORK CENTER CHEST. SEE ARTWORK FILES FOR DETAILS
- A4 ALD WOVEN LABEL @ SIDE SEAM
- A5 2X2 RIB DOUBLED @ SLEEVE CUFFS
- A6 2X2 RIB DOUBLED @ BOTTOM HEM

3_Construction Details-1



Comments (5)

- A1 DOUBLE NEEDLE STRADDLE @SHOULDER
- A2 DOUBLE NEEDLE STRADDLE @FRONT NECK
- A3 DOUBLE NEEDLE STRADDLE @FRONT NECK
- A4 DOUBLE NEEDLE STRADDLE @ CUFF
- A5 DOUBLE NEEDLE STRADDLE @BOTTOM HEM

4_Stitching Details-1

Sample Size: M

POINT OF MEASURE	HOW TO MEASURE	CRITICAL	TYPE	TOLERANCE	M
Front Body Length	HPS to bottom edge	true	Full	1/2 in	27 in
Back Body Length	CB neck seam to bottom edge	true	Full	1/2 in	25 3/4 in
Shoulder Seam Forward	HPS to seam	false	Full	1/8 in	1/2 in
Shoulder Slope	Shoulder point perpendicular to HPS	false	Full	1/4 in	2 in
Front Neck Drop	HPS to neck seam	false	Full	1/8 in	4 in
Back Neck Drop	HPS to neck seam	false	Full	1/8 in	1 1/4 in
Back Neck Width	Seam to seam at back neck, at HPS point	false	Full	1/4 in	7 3/4 in
Neck Trim Height	Neck Seam to trim edge	false	Full	1/8 in	13/16 in
Minimum Neck Stretch		true	Half	0 in	11 1/2 in
Across Shoulder	Seam to seam	false	Half	1/4 in	20 1/2 in
Across Front/Across Back Position from HPS		true	Full	0 in	7 in
Across Front	Down from HPS, Seam to seam	false	Half	1/4 in	19 in
Across Back	Down from HPS, Seam to Seam	false	Half	1/4 in	19 1/2 in
Chest Width	1" Below armhole- edge to edge	true	Half	1/4 in	22 3/4 in
Bottom Opening 2" Above Rib Knit Seam		true	Half	1/4 in	21 3/4 in
Bottom Opening Width- At Seam	Straight with seam relaxed	true	Half	1/2 in	20 1/4 in
Bottom Opening Width- At Edge	At bottom edge	true	Half	1/4 in	17 in
Bottom Hem Height	Bottom edge to stitch line or trim seam	false	Full	1/8 in	2 3/4 in
Sleeve Length from CB Neck	3-point measure from CB Neck to shoulder point to sleeve edge	true	Full	1/2 in	35 in
Armhole Drop	Below HPS - measure perpendicular	false	Full	1/4 in	12 1/2 in
Bicep Width	1" below armhole- edge to edge	false	Half	1/4 in	9 1/2 in
Forearm Width	9" up from sleeve cuff edge	false	Half	1/4 in	7 1/4 in
Sleeve Opening Width 1" Above Rib Knit Seam		true	Half	1/4 in	5 3/8 in
Sleeve Opening Width- At Seam	Width at Seam	false	Half	1/4 in	4 3/4 in
Sleeve Opening Width- At Edge	At edge	false	Half	1/4 in	3 3/4 in
Sleeve Cuff Height	Cuff edge to seam	false	Full	1/8 in	2 3/4 in
CF Artwork Placement below CF Neckline	From CF Neck Seam to Top Edge of Artwork	false	Full	1/8 in	4 in
Loop Label Placement at Sideseam	Bottom edge to bottom of loop label, at the WL side seam	false	Full	1/8 in	7 in

Development Notes - Anastasiya Zolotova

CREATED ON JUL 10, 2025 9:48 PM

SS26CS007 ALD Logo Crewneck

Date:8/27/25

Status: Direct to PPS

TD: Anastasiya

Fit: Updated to follow NOSCS002 Micro Din Crewneck

LÀM THEO FIT MÃ NOSCS002 Micro Din Crewneck (FW25 - C0012-CRW137), KIỂM LẠI THÔNG SỐ