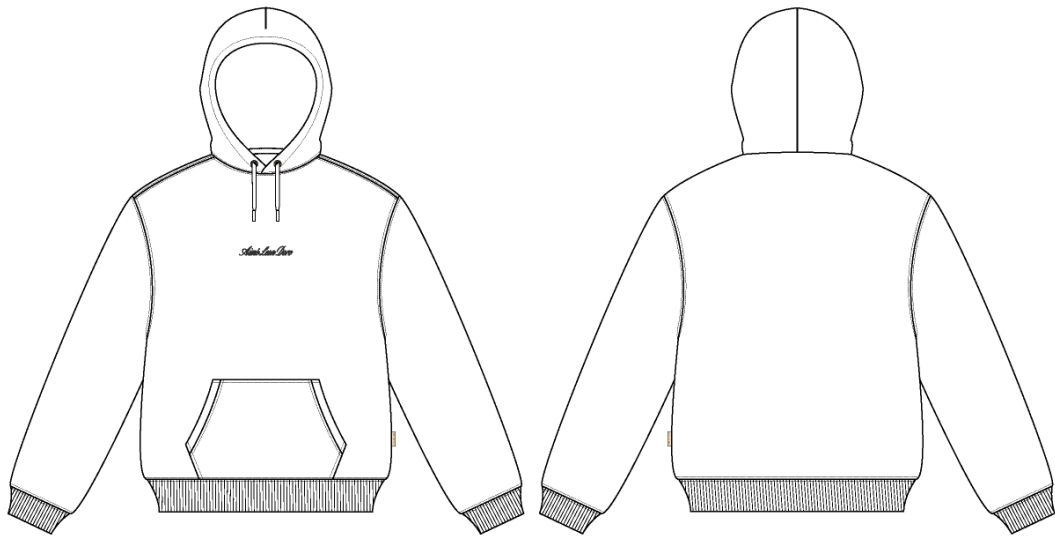


| | |
|-------------------|--|
| Name | Embroidered Logo Hoodie |
| Style No. | SS26CH006 |
| Division | Mens |
| Category | Hoodies |
| Season | Spring/Summer |
| Year | 2026 |
| Size Scale | M -Sample size |
| | <div>XS S M L XL XXL</div> |
| Style Status | Adopted |
| Factory | UN-AVAILABLE |
| Designer Name | Wes |
| TD Name | Anastasiya |
| Created by/Author | 8/27/2025 Anastasiya Zolotova anastasiya.zolotova@aimeleondore.com |

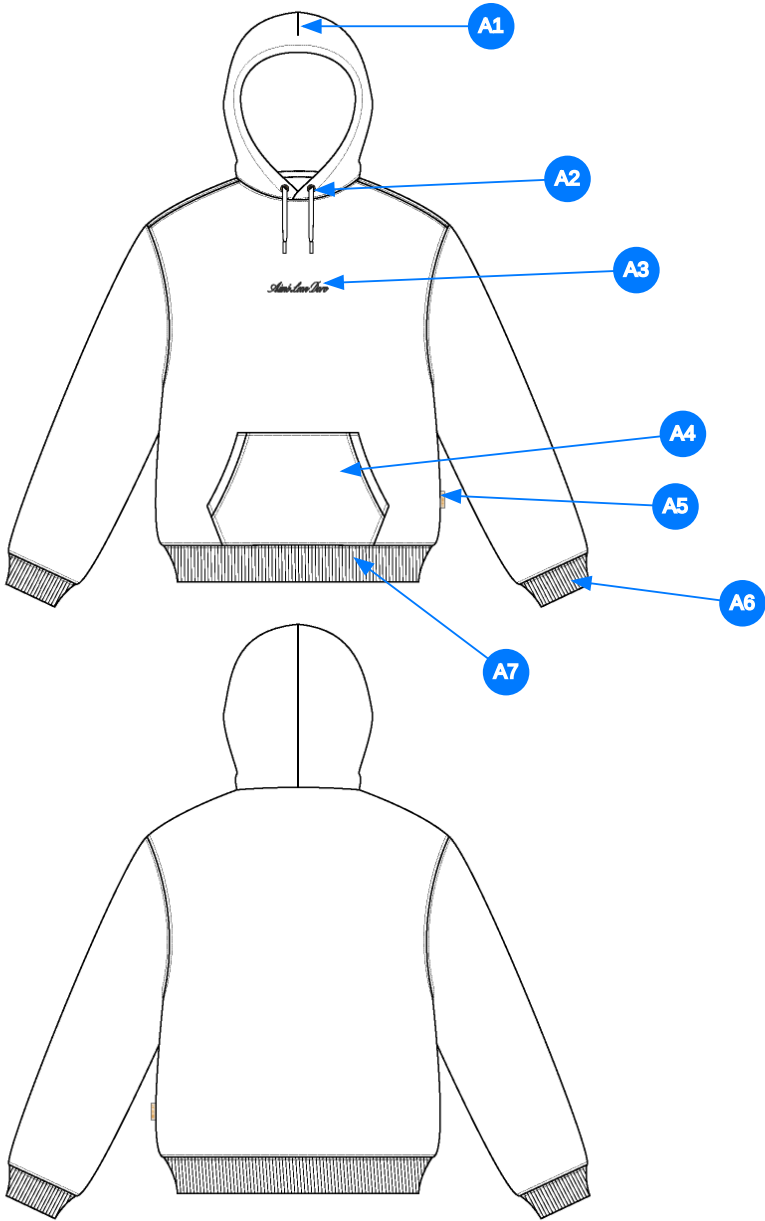
Embroidered Logo Hoodie



1_B&W-1



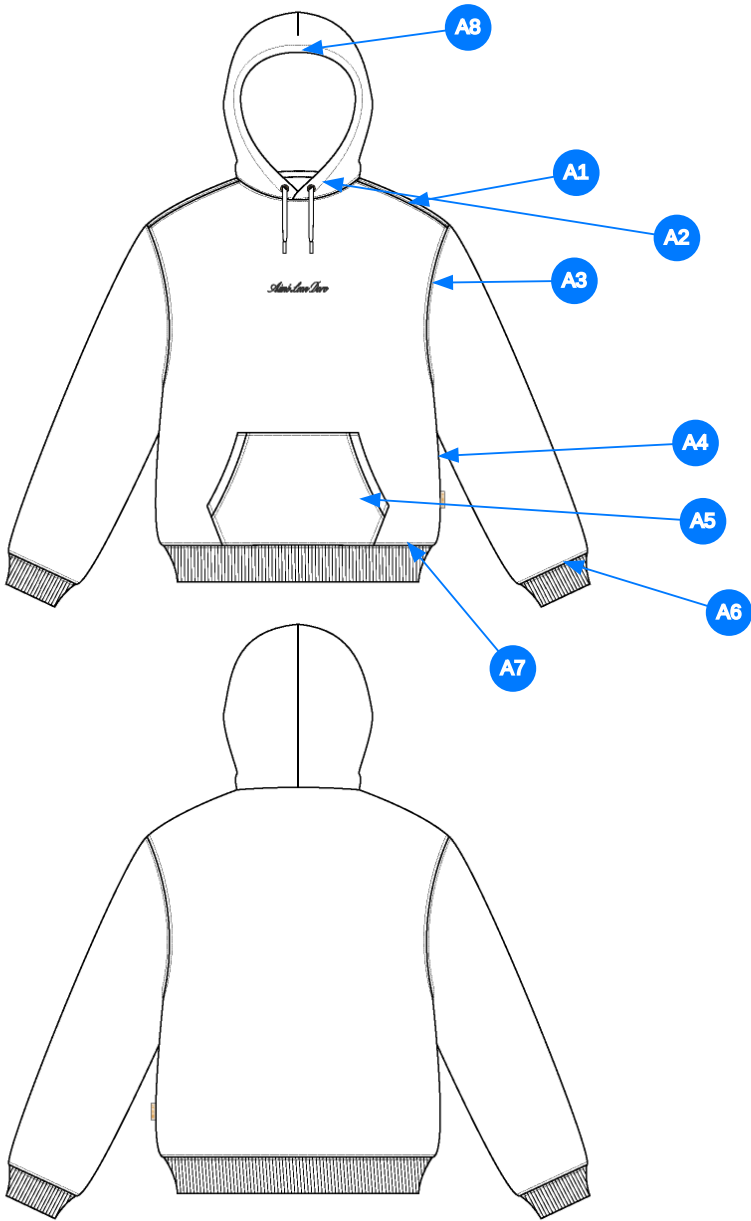
2_CLR-1



Comments (7)

- A1 DART @ HOOD
- A2 METAL EYELETS W/ DRAWCORD @ HOOD - FLAT BRAIDED DRAWCORDS W/ TURN BACK FINISH
- A3 ARTWORK @ CF CHEST - SEE FOLLOWING PAGE FOR ARTWORK DETAILS
- A4 KANGAROO POCKET @ FRONT BODY
- A5 ALD WOVEN LABEL @ SIDE SEAM
- A6 2X2 RIB DOUBLED @ SLEEVE CUFFS
- A7 2X2 RIB DOUBLED @ HEM

3_Construction Details-1



Comments (8)

- A1 STRADDLE STITCH @ SHOULDER SEAM
- A2 STRADDLE STITCH @ NECK
- A3 STRADDLE STITCH @ ARMHOLE
- A4 CLEAN SEAM FINISH @ SIDE SEAM
- A5 1/8" SN TS @ POCKET - APPLIES TO TOP AND BOTTOM EDGES - 1/4" DN TS @ OPENINGS
- A6 STRADDLE STITCH @ SLEEVE CUFF
- A7 STRADDLE STITCH @ BOTTOM HEM
- A8 -BARTACK DRAWCORD @ HOOD TOP EDGE

4_Stitching Details-1

Sample Size: M

| POINT OF MEASURE | HOW TO MEASURE | CRITICAL | TYPE | TOLERANCE | XS | S | M | L | XL | XXL |
|--|---|----------|------|-----------|---------|---------|-----------|--------|----------|----------|
| Front Body Length | HPS to bottom edge | true | Full | 1/2 in | -7/8 in | -7/8 in | 27 in | 7/8 in | 7/8 in | 7/8 in |
| Back Body Length | CB neck seam to bottom edge | true | Full | 1/2 in | -7/8 in | -7/8 in | 26 1/4 in | 7/8 in | 7/8 in | 7/8 in |
| Shoulder Seam Forward | HPS to seam | false | Full | 1/8 in | 0 in | 0 in | 1/2 in | 0 in | 0 in | 0 in |
| Shoulder Slope | Shoulder point perpendicular to HPS | false | Full | 1/4 in | 0 in | 0 in | 2 1/2 in | 0 in | 0 in | 0 in |
| Front Neck Drop | HPS to neck seam | false | Full | 1/8 in | 0 in | -1/8 in | 3 1/2 in | 1/8 in | 1/8 in | 1/8 in |
| Back Neck Drop | HPS to neck seam | false | Full | 1/8 in | 0 in | 0 in | 3/4 in | 0 in | 0 in | 0 in |
| Back Neck Width | Seam to seam at back neck, at HPS point | false | Full | 1/4 in | 0 in | -1/4 in | 9 in | 1/4 in | 1/4 in | 1/4 in |
| Minimum Neck Stretch | | true | Half | 0 in | 0 in | 0 in | 11 1/2 in | 0 in | 0 in | 0 in |
| Across Shoulder Width- Seam to seam | Seam to Seam | false | Full | 1/4 in | -1 in | -1 in | 22 1/2 in | 1 in | 1 1/2 in | 1 1/2 in |
| Across Front/Across Back Position from HPS | | true | Full | 0 in | -1/4 in | -1/4 in | 7 in | 1/4 in | 1/4 in | 1/4 in |
| Across Front | Down from HPS, Seam to seam | false | Half | 1/4 in | -1 in | -1 in | 20 1/2 in | 1 in | 1 1/2 in | 1 1/2 in |
| Across Back | Down from HPS, Seam to Seam | false | Half | 1/4 in | -1 in | -1 in | 21 in | 1 in | 1 1/2 in | 1 1/2 in |
| Chest Width | 1" Below armhole- edge to edge | true | Half | 1/4 in | -1 in | -1 in | 22 1/2 in | 1 in | 1 1/2 in | 1 1/2 in |
| Bottom Opening 2" Above Rib Knit Seam | At bottom edge | true | Half | 1/4 in | -1 in | -1 in | 20 in | 1 in | 1 1/2 in | 1 1/2 in |
| Bottom Opening Width- At Seam | Straight with seam relaxed | true | Half | 1/4 in | -1 in | -1 in | 19 1/2 in | 1 in | 1 1/2 in | 1 1/2 in |
| Bottom Opening Width- At Edge | At bottom edge | true | Half | 1/4 in | -1 in | -1 in | 17 1/2 in | 1 in | 1 1/2 in | 1 1/2 in |
| Bottom Hem Height | Bottom edge to stitch line or trim seam | false | Full | 1/8 in | 0 in | 0 in | 2 1/2 in | 0 in | 0 in | 0 in |
| Sleeve Length from CB Neck | 3-point measure from CB Neck to shoulder point to sleeve edge | true | Full | 1/2 in | -1 in | -1 in | 35 in | 1 in | 1 in | 1 in |
| Armhole Drop | Below HPS - measure perpendicular | false | Full | 1/4 in | -3/8 in | -3/8 in | 13 in | 3/8 in | 1/2 in | 1/2 in |
| Bicep Width | 1" below armhole- edge to edge | false | Half | 1/4 in | -3/8 in | -3/8 in | 10 1/4 in | 3/8 in | 1/2 in | 1/2 in |
| Forearm Width | 9" up from sleeve cuff edge | false | Half | 1/4 in | -1/4 in | -1/4 in | 7 1/2 in | 1/4 in | 3/8 in | 3/8 in |
| Sleeve Opening Width 1" Above Rib Knit Seam | At edge | false | Half | 1/4 in | -1/4 in | -1/4 in | 5 1/4 in | 1/4 in | 3/8 in | 3/8 in |
| Sleeve Opening Width- At Seam | Width at Seam | false | Half | 1/4 in | -1/4 in | -1/4 in | 4 3/4 in | 1/4 in | 3/8 in | 3/8 in |
| Sleeve Opening Width- At Edge | At edge | false | Half | 1/4 in | -1/4 in | -1/4 in | 3 3/4 in | 1/4 in | 1/4 in | 1/4 in |
| Sleeve Cuff Height | Cuff edge to seam | false | Full | 1/8 in | 0 in | 0 in | 2 1/2 in | 0 in | 0 in | 0 in |
| Hood Height at CF | From neck seam to top edge | false | Half | 3/8 in | 0 in | -1/4 in | 15 in | 0 in | 1/4 in | 0 in |
| Hood Height at HPS | | false | Full | 1/8 in | 0 in | -1/4 in | 13 1/2 in | 0 in | 1/4 in | 0 in |
| Hood Width 6" Below Top Edge | Straight from CF edge to CB seam- 6" down | false | Half | 3/8 in | 0 in | -1/4 in | 11 in | 1/4 in | 1/4 in | 1/4 in |
| Exposed Drawcord Length | | false | Full | 1/2 in | 0 in | 0 in | 10 in | 0 in | 0 in | 0 in |
| Hood Tunnel Height | | false | Full | 1/8 in | 0 in | 0 in | 1 in | 0 in | 0 in | 0 in |
| Hood Overlap Width at CF Neck | | false | Full | 1/8 in | 0 in | 0 in | 1 in | 0 in | 0 in | 0 in |
| Drawcord Opening Placement up from Neck Seam | | false | Full | 1/8 in | 0 in | 0 in | 1 1/2 in | 0 in | 0 in | 0 in |
| Kangaroo Pocket Height At Center | Height at center | false | Full | 1/4 in | -1/4 in | -1/4 in | 8 1/2 in | 1/4 in | 1/4 in | 1/4 in |
| Kangaroo Pocket Height at Sides | | false | Full | 1/8 in | -1/8 in | -1/8 in | 3 in | 1/8 in | 1/8 in | 1/8 in |
| Kangaroo Pocket Width at Top Edge | Width at top edge | false | Full | 1/4 in | -1/4 in | -1/4 in | 9 1/2 in | 1/4 in | 1/4 in | 1/4 in |
| Kangaroo Pocket Width at Bottom | Width at Bottom Edge - Extended | false | Full | 1/4 in | -1/4 in | -1/4 in | 12 3/4 in | 1/4 in | 1/4 in | 1/4 in |
| Kangaroo Pocket Opening | | false | Full | 1/8 in | -1/4 in | -1/4 in | 6 1/4 in | 1/4 in | 1/4 in | 1/4 in |
| Kangaroo Pocket Hem Height | Edge to stitch line | false | Full | 1/8 in | 0 in | 0 in | 3/4 in | 0 in | 0 in | 0 in |
| CF Artwork Placement below CF Neckline | From CF Neck Seam to Top Edge of Artwork | false | Full | 1/8 in | -1/8 in | -1/8 in | 3 3/4 in | 1/8 in | 1/8 in | 1/8 in |
| Loop Label Placement at Sideseam | Bottom edge to bottom of loop label, at the WL side seam | false | Full | 1/8 in | 0 in | 0 in | 7 in | 0 in | 0 in | 0 in |

Sample Size: M

| POINT OF MEASURE | HOW TO MEASURE | CRITICAL | TYPE | TOLERANCE | XS | S | M | L | XL | XXL |
|--|---|----------|------|-----------|-----------|-----------|-----------|-----------|-----------|-----------|
| Front Body Length | HPS to bottom edge | true | Full | 1/2 in | 25 1/4 in | 26 1/8 in | 27 in | 27 7/8 in | 28 3/4 in | 29 5/8 in |
| Back Body Length | CB neck seam to bottom edge | true | Full | 1/2 in | 24 1/2 in | 25 3/8 in | 26 1/4 in | 27 1/8 in | 28 in | 28 7/8 in |
| Shoulder Seam Forward | HPS to seam | false | Full | 1/8 in | 1/2 in | 1/2 in | 1/2 in | 1/2 in | 1/2 in | 1/2 in |
| Shoulder Slope | Shoulder point perpendicular to HPS | false | Full | 1/4 in | 2 1/2 in | 2 1/2 in | 2 1/2 in | 2 1/2 in | 2 1/2 in | 2 1/2 in |
| Front Neck Drop | HPS to neck seam | false | Full | 1/8 in | 3 3/8 in | 3 3/8 in | 3 1/2 in | 3 5/8 in | 3 3/4 in | 3 7/8 in |
| Back Neck Drop | HPS to neck seam | false | Full | 1/8 in | 3/4 in | 3/4 in | 3/4 in | 3/4 in | 3/4 in | 3/4 in |
| Back Neck Width | Seam to seam at back neck, at HPS point | false | Full | 1/4 in | 8 3/4 in | 8 3/4 in | 9 in | 9 1/4 in | 9 1/2 in | 9 3/4 in |
| Minimum Neck Stretch | | true | Half | 0 in | 11 1/2 in | 11 1/2 in | 11 1/2 in | 11 1/2 in | 11 1/2 in | 11 1/2 in |
| Across Shoulder Width- Seam to seam | Seam to Seam | false | Full | 1/4 in | 20 1/2 in | 21 1/2 in | 22 1/2 in | 23 1/2 in | 25 in | 26 1/2 in |
| Across Front/Across Back Position from HPS | | true | Full | 0 in | 6 1/2 in | 6 3/4 in | 7 in | 7 1/4 in | 7 1/2 in | 7 3/4 in |
| Across Front | Down from HPS, Seam to seam | false | Half | 1/4 in | 18 1/2 in | 19 1/2 in | 20 1/2 in | 21 1/2 in | 23 in | 24 1/2 in |
| Across Back | Down from HPS, Seam to Seam | false | Half | 1/4 in | 19 in | 20 in | 21 in | 22 in | 23 1/2 in | 25 in |
| Chest Width | 1" Below armhole- edge to edge | true | Half | 1/4 in | 20 1/2 in | 21 1/2 in | 22 1/2 in | 23 1/2 in | 25 in | 26 1/2 in |
| Bottom Opening 2" Above Rib Knit Seam | At bottom edge | true | Half | 1/4 in | 18 in | 19 in | 20 in | 21 in | 22 1/2 in | 24 in |
| Bottom Opening Width- At Seam | Straight with seam relaxed | true | Half | 1/4 in | 17 1/2 in | 18 1/2 in | 19 1/2 in | 20 1/2 in | 22 in | 23 1/2 in |
| Bottom Opening Width- At Edge | At bottom edge | true | Half | 1/4 in | 15 1/2 in | 16 1/2 in | 17 1/2 in | 18 1/2 in | 20 in | 21 1/2 in |
| Bottom Hem Height | Bottom edge to stitch line or trim seam | false | Full | 1/8 in | 2 1/2 in | 2 1/2 in | 2 1/2 in | 2 1/2 in | 2 1/2 in | 2 1/2 in |
| Sleeve Length from CB Neck | 3-point measure from CB Neck to shoulder point to sleeve edge | true | Full | 1/2 in | 33 in | 34 in | 35 in | 36 in | 37 in | 38 in |
| Armhole Drop | Below HPS - measure perpendicular | false | Full | 1/4 in | 12 1/4 in | 12 5/8 in | 13 in | 13 3/8 in | 13 7/8 in | 14 3/8 in |
| Bicep Width | 1" below armhole- edge to edge | false | Half | 1/4 in | 9 1/2 in | 9 7/8 in | 10 1/4 in | 10 5/8 in | 11 1/8 in | 11 5/8 in |
| Forearm Width | 9" up from sleeve cuff edge | false | Half | 1/4 in | 7 in | 7 1/4 in | 7 1/2 in | 7 3/4 in | 8 1/8 in | 8 1/2 in |
| Sleeve Opening Width 1" Above Rib Knit Seam | At edge | false | Half | 1/4 in | 4 3/4 in | 5 in | 5 1/4 in | 5 1/2 in | 5 7/8 in | 6 1/4 in |
| Sleeve Opening Width- At Seam | Width at Seam | false | Half | 1/4 in | 4 1/4 in | 4 1/2 in | 4 3/4 in | 5 in | 5 3/8 in | 5 3/4 in |
| Sleeve Opening Width- At Edge | At edge | false | Half | 1/4 in | 3 1/4 in | 3 1/2 in | 3 3/4 in | 4 in | 4 1/4 in | 4 1/2 in |
| Sleeve Cuff Height | Cuff edge to seam | false | Full | 1/8 in | 2 1/2 in | 2 1/2 in | 2 1/2 in | 2 1/2 in | 2 1/2 in | 2 1/2 in |
| Hood Height at CF | From neck seam to top edge | false | Half | 3/8 in | 14 3/4 in | 14 3/4 in | 15 in | 15 in | 15 1/4 in | 15 1/4 in |
| Hood Height at HPS | | false | Full | 1/8 in | 13 1/4 in | 13 1/4 in | 13 1/2 in | 13 1/2 in | 13 3/4 in | 13 3/4 in |
| Hood Width 6" Below Top Edge | Straight from CF edge to CB seam- 6" down | false | Half | 3/8 in | 10 3/4 in | 10 3/4 in | 11 in | 11 1/4 in | 11 1/2 in | 11 3/4 in |
| Exposed Drawcord Length | | false | Full | 1/2 in | 10 in | 10 in | 10 in | 10 in | 10 in | 10 in |
| Hood Tunnel Height | | false | Full | 1/8 in | 1 in | 1 in | 1 in | 1 in | 1 in | 1 in |
| Hood Overlap Width at CF Neck | | false | Full | 1/8 in | 1 in | 1 in | 1 in | 1 in | 1 in | 1 in |
| Drawcord Opening Placement up from Neck Seam | | false | Full | 1/8 in | 1 1/2 in | 1 1/2 in | 1 1/2 in | 1 1/2 in | 1 1/2 in | 1 1/2 in |
| Kangaroo Pocket Height At Center | Height at center | false | Full | 1/4 in | 8 in | 8 1/4 in | 8 1/2 in | 8 3/4 in | 9 in | 9 1/4 in |
| Kangaroo Pocket Height at Sides | | false | Full | 1/8 in | 2 3/4 in | 2 7/8 in | 3 in | 3 1/8 in | 3 1/4 in | 3 3/8 in |
| Kangaroo Pocket Width at Top Edge | Width at top edge | false | Full | 1/4 in | 9 in | 9 1/4 in | 9 1/2 in | 9 3/4 in | 10 in | 10 1/4 in |
| Kangaroo Pocket Width at Bottom | Width at Bottom Edge - Extended | false | Full | 1/4 in | 12 1/4 in | 12 1/2 in | 12 3/4 in | 13 in | 13 1/4 in | 13 1/2 in |
| Kangaroo Pocket Opening | | false | Full | 1/8 in | 5 3/4 in | 6 in | 6 1/4 in | 6 1/2 in | 6 3/4 in | 7 in |
| Kangaroo Pocket Hem Height | Edge to stitch line | false | Full | 1/8 in | 3/4 in | 3/4 in | 3/4 in | 3/4 in | 3/4 in | 3/4 in |
| CF Artwork Placement below CF Neckline | From CF Neck Seam to Top Edge of Artwork | false | Full | 1/8 in | 3 1/2 in | 3 5/8 in | 3 3/4 in | 3 7/8 in | 4 in | 4 1/8 in |

| | | | | | | | | | | |
|----------------------------------|--|-------|------|--------|------|------|------|------|------|------|
| Loop Label Placement at Sideseam | Bottom edge to bottom of loop label, at the WL side seam | false | Full | 1/8 in | 7 in | 7 in | 7 in | 7 in | 7 in | 7 in |
|----------------------------------|--|-------|------|--------|------|------|------|------|------|------|

Measured Size: M

| POINT OF MEASURE | HOW TO MEASURE | CRITICAL | TYPE | TOLERANCE | EXPECTED | PPS - RCVD | VARIANCE | ADJUST BY +/- | REVISED SPEC | MEASUREMENT NOTES |
|--|---|----------|------|-----------|-----------|------------|----------|---------------|--------------|-------------------|
| Front Body Length | HPS to bottom edge | true | Full | 1/2 in | 27 in | 27 in | 0 in | 0 in | 27 in | |
| Back Body Length | CB neck seam to bottom edge | true | Full | 1/2 in | 26 1/4 in | 26 1/4 in | 0 in | 0 in | 26 1/4 in | |
| Shoulder Seam Forward | HPS to seam | false | Full | 1/8 in | 1/2 in | 1/4 in | -1/4 in | 0 in | 1/2 in | go back to spec |
| Shoulder Slope | Shoulder point perpendicular to HPS | false | Full | 1/4 in | 2 1/2 in | 2 1/2 in | 0 in | 0 in | 2 1/2 in | |
| Front Neck Drop | HPS to neck seam | false | Full | 1/8 in | 3 1/2 in | 3 1/4 in | -1/4 in | 0 in | 3 1/2 in | go back to spec |
| Back Neck Drop | HPS to neck seam | false | Full | 1/8 in | 3/4 in | 3/4 in | 0 in | 0 in | 3/4 in | |
| Back Neck Width | Seam to seam at back neck, at HPS point | false | Full | 1/4 in | 9 in | 9 in | 0 in | 0 in | 9 in | |
| Minimum Neck Stretch | | true | Half | 0 in | 11 1/2 in | 0 in | 0 in | 0 in | 11 1/2 in | |
| Across Shoulder Width- Seam to seam | Seam to Seam | false | Full | 1/4 in | 22 1/2 in | 22 1/2 in | 0 in | 0 in | 22 1/2 in | |
| Across Front/Across Back Position from HPS | | true | Full | 0 in | 7 in | 7 in | 0 in | 0 in | 7 in | |
| Across Front | Down from HPS, Seam to seam | false | Half | 1/4 in | 20 1/2 in | 20 3/4 in | 1/4 in | 0 in | 20 1/2 in | |
| Across Back | Down from HPS, Seam to Seam | false | Half | 1/4 in | 21 in | 21 in | 0 in | 0 in | 21 in | |
| Chest Width | 1" Below armhole- edge to edge | true | Half | 1/4 in | 22 1/2 in | 22 1/2 in | 0 in | 0 in | 22 1/2 in | |
| Bottom Opening 2" Above Rib Knit Seam | At bottom edge | true | Half | 1/4 in | 20 in | 20 1/2 in | 1/2 in | 0 in | 20 in | go back to spec |
| Bottom Opening Width- At Seam | Straight with seam relaxed | true | Half | 1/4 in | 19 1/2 in | 19 1/4 in | -1/4 in | 0 in | 19 1/2 in | |
| Bottom Opening Width- At Edge | At bottom edge | true | Half | 1/4 in | 17 1/2 in | 18 1/2 in | 1 in | 0 in | 17 1/2 in | go back to spec |
| Bottom Hem Height | Bottom edge to stitch line or trim seam | false | Full | 1/8 in | 2 1/2 in | 2 1/2 in | 0 in | 0 in | 2 1/2 in | |
| Sleeve Length from CB Neck | 3-point measure from CB Neck to shoulder point to sleeve edge | true | Full | 1/2 in | 35 in | 35 1/4 in | 1/4 in | 0 in | 35 in | |
| Armhole Drop | Below HPS - measure perpendicular | false | Full | 1/4 in | 13 in | 13 in | 0 in | 0 in | 13 in | |
| Bicep Width | 1" below armhole- edge to edge | false | Half | 1/4 in | 10 1/4 in | 10 1/4 in | 0 in | 0 in | 10 1/4 in | |
| Forearm Width | 9" up from sleeve cuff edge | false | Half | 1/4 in | 7 1/2 in | 7 1/2 in | 0 in | 0 in | 7 1/2 in | |
| Sleeve Opening Width 1" Above Rib Knit Seam | At edge | false | Half | 1/4 in | 5 1/4 in | 5 in | -1/4 in | 0 in | 5 1/4 in | |
| Sleeve Opening Width- At Seam | Width at Seam | false | Half | 1/4 in | 4 3/4 in | 4 3/4 in | 0 in | 0 in | 4 3/4 in | |
| Sleeve Opening Width- At Edge | At edge | false | Half | 1/4 in | 3 3/4 in | 3 3/4 in | 0 in | 0 in | 3 3/4 in | |
| Sleeve Cuff Height | Cuff edge to seam | false | Full | 1/8 in | 2 1/2 in | 2 1/2 in | 0 in | 0 in | 2 1/2 in | |
| Hood Height at CF | From neck seam to top edge | false | Half | 3/8 in | 15 in | 15 in | 0 in | 0 in | 15 in | |
| Hood Height at HPS | | false | Full | 1/8 in | 13 1/2 in | 14 in | 1/2 in | 0 in | 13 1/2 in | go back to spec |
| Hood Width 6" Below Top Edge | Straight from CF edge to CB seam- 6" down | false | Half | 3/8 in | 11 in | 10 3/4 in | -1/4 in | 0 in | 11 in | |
| Exposed Drawcord Length | | false | Full | 1/2 in | 10 in | 0 in | 0 in | 0 in | 10 in | Please Add |
| Hood Tunnel Height | | false | Full | 1/8 in | 1 in | 0 in | 0 in | 0 in | 1 in | |
| Hood Overlap Width at CF Neck | | false | Full | 1/8 in | 1 in | 1 in | 0 in | 0 in | 1 in | |
| Drawcord Opening Placement up from Neck Seam | | false | Full | 1/8 in | 1 1/2 in | 1 3/4 in | 1/4 in | 0 in | 1 1/2 in | go back to spec |
| Kangaroo Pocket Height At Center | Height at center | false | Full | 1/4 in | 8 1/2 in | 8 3/8 in | -1/8 in | 0 in | 8 1/2 in | |
| Kangaroo Pocket Height at Sides | | false | Full | 1/8 in | 3 in | 3 in | 0 in | 0 in | 3 in | |
| Kangaroo Pocket Width at Top Edge | Width at top edge | false | Full | 1/4 in | 9 1/2 in | 9 1/2 in | 0 in | 0 in | 9 1/2 in | |

| | | | | | | | | | | |
|--|--|-------|------|--------|-----------|----------|--------|------|-----------|-----------------|
| Kangaroo Pocket Width at Bottom | Width at Bottom Edge - Extended | false | Full | 1/4 in | 12 3/4 in | 13 in | 1/4 in | 0 in | 12 3/4 in | |
| Kangaroo Pocket Opening | | false | Full | 1/8 in | 6 1/4 in | 6 1/4 in | 0 in | 0 in | 6 1/4 in | |
| Kangaroo Pocket Hem Height | Edge to stitch line | false | Full | 1/8 in | 3/4 in | 3/4 in | 0 in | 0 in | 3/4 in | |
| CF Artwork Placement below CF Neckline | From CF Neck Seam to Top Edge of Artwork | false | Full | 1/8 in | 3 3/4 in | 4 in | 1/4 in | 0 in | 3 3/4 in | go back to spec |
| Loop Label Placement at Sideseam | Bottom edge to bottom of loop label, at the WL side seam | false | Full | 1/8 in | 7 in | 7 in | 0 in | 0 in | 7 in | |

PPS - Sarah Tota

CREATED ON AUG 26, 2025 7:34 PM
PPS: SIZE:M, CREATED AT: 08-25-2025

SS26CH006 Embroidered Logo Hoodie

FITTING DATE: 8/26/25

MODEL/ATTENDEES: Jessica, Cal, Anthony, Megan, Jeni, Anastasiya, Sarah

STATUS: PPS Approved to TOP

*Noted that grommet size is incorrect on PPS, please use correct grommets on bulk

*Noted missing drawcords, please ensure to add for bulk

Fit Comments:

- 1. Shoulder seam forward came in -1/4", go back to spec
- 2. Front neck drop came in -1/4", go back to spec
- 3. Bottom opening 2" above rib knit seam came in +1/2", go back to spec
- 4. Bottom opening width at edge came in +1", go back to spec
- 5. Hood height at HPS came in +1/2", go back to spec
- 6. Drawcord opening placement up from neck seam came in +1/4", go back to spec
- 7. CF artwork placement below CF neckline came in +1/4", go back to spec

Construction/Workmanship:

- 1. Ensure to bar tack drawcords at top edge of hood centered within hood tunnel.
- 1. Đảm bảo đính bộ dây rút ở mép trên của mũ, tại vị trí trung tâm trong đường luồn dây.

- * Chúng tôi nhận thấy kích thước mắt cáo trên mẫu PPS không đúng. Vui lòng sử dụng đúng loại khoen cho sản xuất hàng loạt.
- * Chúng tôi nhận thấy mẫu bị thiếu dây rút. Vui lòng đảm bảo thêm dây rút vào sản phẩm sản xuất hàng loạt.
- 1. Đường may vai: Đường may vai phía trước bị thiếu 1/4 inch. Vui lòng làm lại theo đúng thông số kỹ thuật.
- 2. Hạ cổ trước: Hạ cổ trước bị thiếu 1/4 inch. Vui lòng làm lại theo đúng thông số kỹ thuật.
- 3. Vòng lai (cách bo rib 2 inch): Vòng lai cách đường may bo rib 2 inch bị dư 1/2 inch. Vui lòng làm lại theo đúng thông số kỹ thuật.
- 4. Vòng lai (mép bo): Vòng lai tại mép bo bị dư 1 inch. Vui lòng làm lại theo đúng thông số kỹ thuật.
- 5. Chiều cao mũ: Chiều cao mũ tại đỉnh vai bị dư 1/2 inch. Vui lòng làm lại theo đúng thông số kỹ thuật.
- 6. Vị trí lỗ dây luồn: Vị trí lỗ dây rút so với đường may cổ bị dư 1/4 inch. Vui lòng làm lại theo đúng thông số kỹ thuật.
- 7. Vị trí hình in CF: Vị trí hình in chính giữa thân trước so với đường viền cổ CF bị dư 1/4 inch. Vui lòng làm lại theo đúng thông số kỹ thuật.



Untitled-63-0.jpg