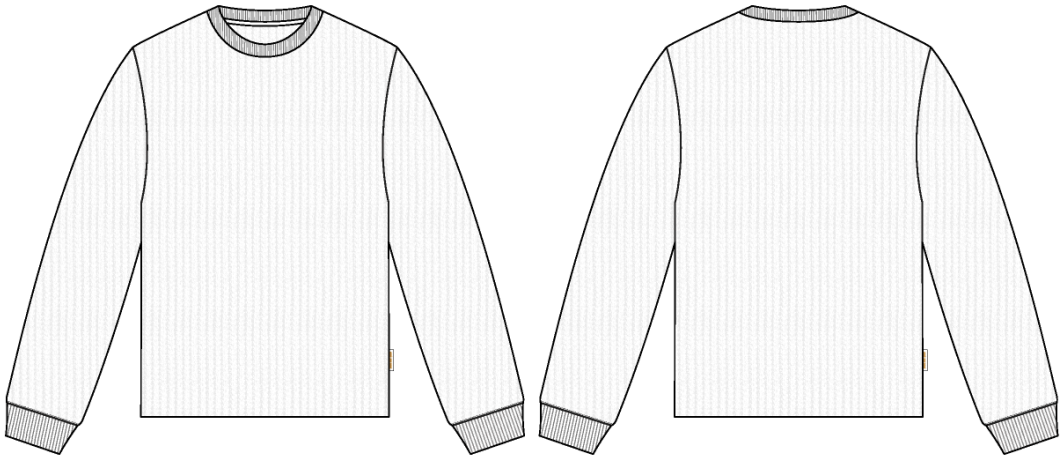
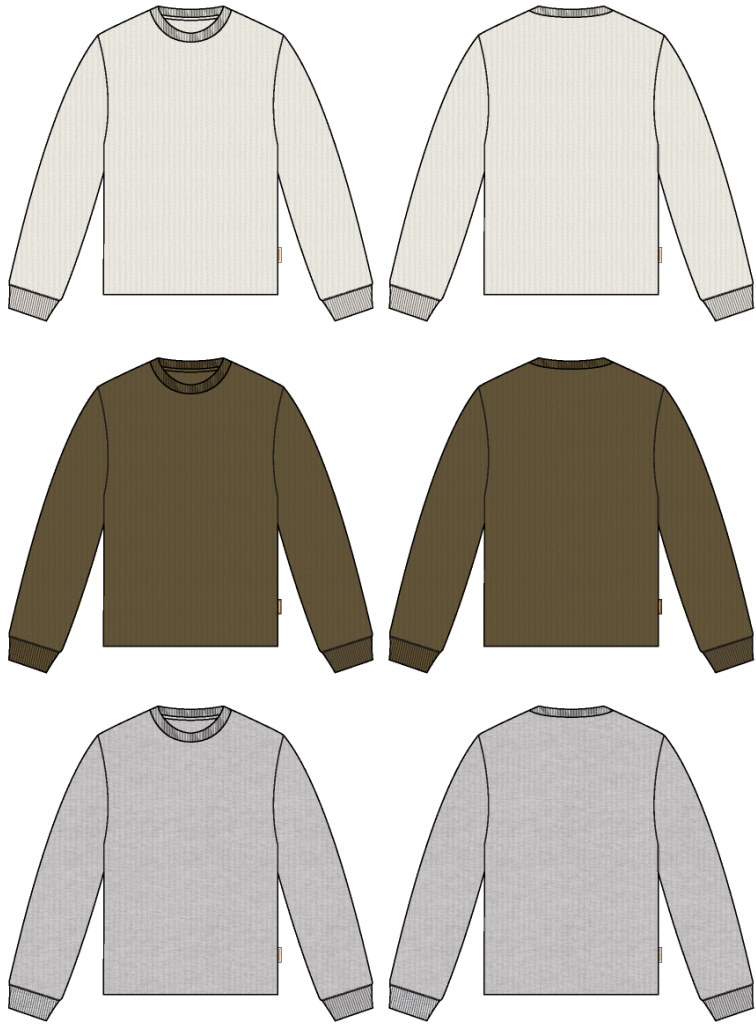


Name	Distressed Waffle Thermal
Style No.	SS26CT098
Division	Mens
Category	Tees
Season	Spring/Summer
Year	2026
Size Scale	M -Sample size
	<div>XS S M L XL XXL</div>
Style Status	Adopted
Factory	UN-AVAILABLE
Designer Name	Wes
TD Name	Anastasiya
Created by/Author	11/26/2025 Sarah Tota sarah.tota@aimeleondore.com

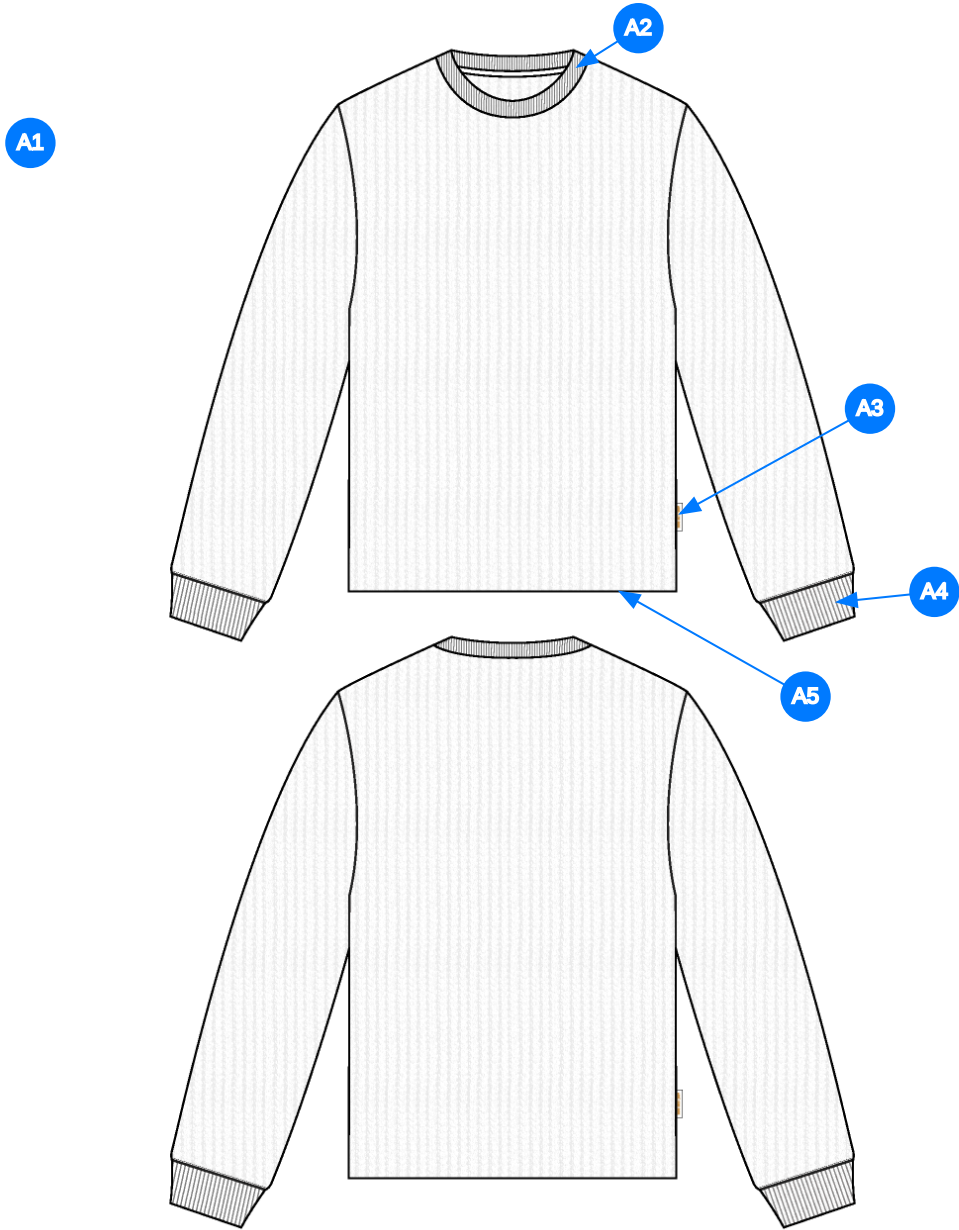
Distressed Waffle Thermal



1_B&W-1



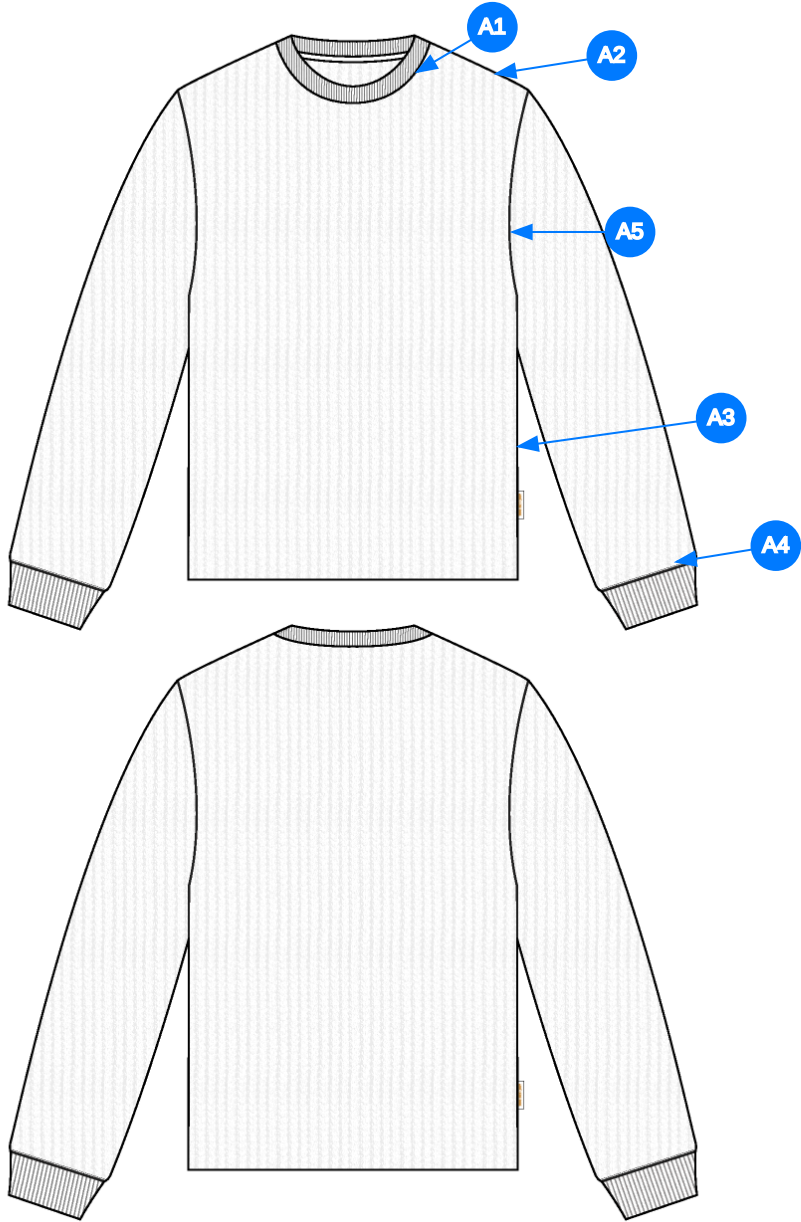
2_CLR-1



Comments (5)

- A1 FIT: LS WAFFLE THERMAL (FW23CT053)
- A2 1X1 RIB @ NECK - DOUBLED NECK (ON FOLD) -NECK TAPE @ BACK NECK
- A3 ALD WOVEN LABEL @ SIDE SEAM
- A4 1X1 RIB @ SLEEVE CUFF - DOUBLED CUFF (ON FOLD)
- A5 RAW EDGE @ BOTTOM HEM - PLEASE ENSURE CUTTING IS STRAIGHT

3_Construction Details-1



Comments (5)

- A1 EDGE STITCH @ NECK
- A2 STRADDLE STITCH @ SHOULDER
- A3 CLEAN SEAM @ SIDE SEAM
- A4 CLEAN SEAM @ CUFF
- A5 STRADDLE STITCH @ ARMHOLE

A1 Điều mép ở Cổ
A2 Đường may khóa ngang ở Vai
A3 Đường may sạch ở đường sườn
A4 Đường may sạch ở bo tay
A5 Đường may khóa ngang ở Nách

4_Stitching Details-1

CONSTRUCTION REFERENCE

LOOKING TO REMAKE PREVIOUS STYLE
INCLUDING RAW HEM AND DISTRESSING ON SLEEVE CUFFS/NECK



5_Construction Reference-1

CONSTRUCTION REFERENCE

LOOKING FOR TWO LAYER OPEN RIB AT NECK AND SLEEVE CUFFS



6_Construction Reference-1

Sample Size: M

POINT OF MEASURE	CODE	HOW TO MEASURE	CRITICAL	TYPE	TOLERANCE	XS	S	M	L	XL	XXL
Front Body Length	S&K01	HPS to bottom edge	true	Full	1/2 in	-7/8 in	-7/8 in	28 1/4 in	7/8 in	7/8 in	7/8 in
Back Body Length	S&K02	CB neck seam to bottom edge	true	Full	1/2 in	-7/8 in	-7/8 in	27 in	7/8 in	7/8 in	7/8 in
Shoulder Slope	S&K08	Shoulder point perpendicular to HPS	false	Full	1/4 in	0 in	0 in	1 3/4 in	0 in	0 in	0 in
Shoulder Seam Forward	S&K07	HPS to seam	false	Full	1/8 in	0 in	0 in	1/2 in	0 in	0 in	0 in
Front Neck Drop	S&K04	HPS to neck seam	false	Full	1/8 in	-1/8 in	-1/8 in	4 in	1/8 in	1/8 in	1/8 in
Back Neck Drop	S&K05	HPS to neck seam	false	Full	1/8 in	0 in	0 in	1 1/4 in	0 in	0 in	0 in
Back Neck Width	S&K06	Seam to seam at back neck, at HPS point	false	Full	1/4 in	-1/4 in	-1/4 in	7 1/2 in	1/4 in	1/4 in	1/4 in
Neck Trim Height	S&K020	Neck Seam to trim edge	false	Full	1/8 in	0 in	0 in	7/8 in	0 in	0 in	0 in
Minimum Neck Stretch	S&K199		true	Half	0 in	0 in	0 in	11 1/2 in	0 in	0 in	0 in
Across Shoulder	S&K09	Seam to seam	false	Half	1/4 in	-3/4 in	-3/4 in	16 3/4 in	3/4 in	1 in	1 in
Across Front/Across Back Position from HPS	eos7YR		true	Full	0 in	-1/4 in	-1/4 in	7 in	1/4 in	1/4 in	1/4 in
Across Front	S&K010		false	Half	1/4 in	-3/4 in	-3/4 in	14 3/4 in	3/4 in	1 in	1 in
Across Back	S&K011		false	Half	1/4 in	-3/4 in	-3/4 in	15 1/2 in	3/4 in	1 in	1 in
Chest Width	S&K012	1" Below armhole- edge to edge	true	Half	1/4 in	-1 in	-1 in	19 1/4 in	1 in	1 1/2 in	1 1/2 in
Bottom Opening Width- At Edge	S&K013	At bottom edge	true	Half	1/4 in	-1 in	-1 in	19 1/4 in	1 in	1 1/2 in	1 1/2 in
Bottom Hem Height	S&K014	Bottom edge to stitch line or trim seam	false	Full	1/8 in	0 in	0 in	0 in	0 in	0 in	0 in
Sleeve Length from CB Neck	S&K032	3-point measure from CB Neck to shoulder point to sleeve edge	true	Full	1/2 in	-1 in	-1 in	34 1/2 in	1 in	1 in	1 in
Armhole Drop	S&K016	Below HPS - measure perpendicular	false	Full	1/4 in	-3/8 in	-3/8 in	11 in	3/8 in	1/2 in	1/2 in
Bicep Width	S&K017	1" below armhole- edge to edge	false	Half	1/4 in	-3/8 in	-3/8 in	7 1/2 in	3/8 in	1/2 in	1/2 in
Forearm Width	S&K033	9" up from sleeve cuff edge	false	Half	1/4 in	-1/4 in	-1/4 in	5 1/2 in	1/4 in	3/8 in	3/8 in
Sleeve Opening Width- At Seam	S&K034	Width at Seam	false	Half	1/4 in	-1/4 in	-1/4 in	4 1/2 in	1/4 in	3/8 in	3/8 in
Sleeve Opening Width- At Edge	S&K73	At edge	false	Half	1/4 in	-1/4 in	-1/4 in	3 1/2 in	1/4 in	1/4 in	1/4 in
Sleeve Cuff Height	S&K36	Cuff edge to seam	false	Full	1/8 in	0 in	0 in	3 in	0 in	0 in	0 in
Loop Label Placement at Sideseam	S&K023	Bottom edge to bottom of loop label, at the WL side seam	false	Full	1/8 in	0 in	0 in	7 in	0 in	0 in	0 in

Sample Size: M

POINT OF MEASURE	CODE	HOW TO MEASURE	CRITICAL	TYPE	TOLERANCE	XS	S	M	L	XL	XXL
Front Body Length	S&K01	HPS to bottom edge	true	Full	1/2 in	26 1/2 in	27 3/8 in	28 1/4 in	29 1/8 in	30 in	30 7/8 in
Back Body Length	S&K02	CB neck seam to bottom edge	true	Full	1/2 in	25 1/4 in	26 1/8 in	27 in	27 7/8 in	28 3/4 in	29 5/8 in
Shoulder Slope	S&K08	Shoulder point perpendicular to HPS	false	Full	1/4 in	1 3/4 in	1 3/4 in	1 3/4 in	1 3/4 in	1 3/4 in	1 3/4 in
Shoulder Seam Forward	S&K07	HPS to seam	false	Full	1/8 in	1/2 in	1/2 in	1/2 in	1/2 in	1/2 in	1/2 in
Front Neck Drop	S&K04	HPS to neck seam	false	Full	1/8 in	3 3/4 in	3 7/8 in	4 in	4 1/8 in	4 1/4 in	4 3/8 in
Back Neck Drop	S&K05	HPS to neck seam	false	Full	1/8 in	1 1/4 in	1 1/4 in	1 1/4 in	1 1/4 in	1 1/4 in	1 1/4 in
Back Neck Width	S&K06	Seam to seam at back neck, at HPS point	false	Full	1/4 in	7 in	7 1/4 in	7 1/2 in	7 3/4 in	8 in	8 1/4 in
Neck Trim Height	S&K020	Neck Seam to trim edge	false	Full	1/8 in	7/8 in	7/8 in	7/8 in	7/8 in	7/8 in	7/8 in
Minimum Neck Stretch	S&K199		true	Half	0 in	11 1/2 in	11 1/2 in	11 1/2 in	11 1/2 in	11 1/2 in	11 1/2 in
Across Shoulder	S&K09	Seam to seam	false	Half	1/4 in	15 1/4 in	16 in	16 3/4 in	17 1/2 in	18 1/2 in	19 1/2 in
Across Front/Across Back Position from HPS	eos7YR		true	Full	0 in	6 1/2 in	6 3/4 in	7 in	7 1/4 in	7 1/2 in	7 3/4 in
Across Front	S&K010		false	Half	1/4 in	13 1/4 in	14 in	14 3/4 in	15 1/2 in	16 1/2 in	17 1/2 in
Across Back	S&K011		false	Half	1/4 in	14 in	14 3/4 in	15 1/2 in	16 1/4 in	17 1/4 in	18 1/4 in
Chest Width	S&K012	1" Below armhole- edge to edge	true	Half	1/4 in	17 1/4 in	18 1/4 in	19 1/4 in	20 1/4 in	21 3/4 in	23 1/4 in
Bottom Opening Width- At Edge	S&K013	At bottom edge	true	Half	1/4 in	17 1/4 in	18 1/4 in	19 1/4 in	20 1/4 in	21 3/4 in	23 1/4 in
Bottom Hem Height	S&K014	Bottom edge to stitch line or trim seam	false	Full	1/8 in	0 in	0 in	0 in	0 in	0 in	0 in
Sleeve Length from CB Neck	S&K032	3-point measure from CB Neck to shoulder point to sleeve edge	true	Full	1/2 in	32 1/2 in	33 1/2 in	34 1/2 in	35 1/2 in	36 1/2 in	37 1/2 in
Armhole Drop	S&K016	Below HPS - measure perpendicular	false	Full	1/4 in	10 1/4 in	10 5/8 in	11 in	11 3/8 in	11 7/8 in	12 3/8 in
Bicep Width	S&K017	1" below armhole- edge to edge	false	Half	1/4 in	6 3/4 in	7 1/8 in	7 1/2 in	7 7/8 in	8 3/8 in	8 7/8 in
Forearm Width	S&K033	9" up from sleeve cuff edge	false	Half	1/4 in	5 in	5 1/4 in	5 1/2 in	5 3/4 in	6 1/8 in	6 1/2 in
Sleeve Opening Width- At Seam	S&K034	Width at Seam	false	Half	1/4 in	4 in	4 1/4 in	4 1/2 in	4 3/4 in	5 1/8 in	5 1/2 in
Sleeve Opening Width- At Edge	S&K73	At edge	false	Half	1/4 in	3 in	3 1/4 in	3 1/2 in	3 3/4 in	4 in	4 1/4 in
Sleeve Cuff Height	S&K36	Cuff edge to seam	false	Full	1/8 in	3 in	3 in	3 in	3 in	3 in	3 in
Loop Label Placement at Sideseam	S&K023	Bottom edge to bottom of loop label, at the WL side seam	false	Full	1/8 in	7 in	7 in	7 in	7 in	7 in	7 in

Measured Size: M

POINT OF MEASURE	CODE	HOW TO MEASURE	CRITICAL	TYPE	TOLERANCE	EXPECTED	PPS - RCVD	VARIANCE	ADJUST BY +/-	REVISED SPEC	MEASUREMENT NOTES
Front Body Length	S&K01	HPS to bottom edge	true	Full	1/2 in	28 1/4 in	28 1/2 in	1/4 in	0 in	28 1/4 in	
Back Body Length	S&K02	CB neck seam to bottom edge	true	Full	1/2 in	27 1/4 in	27 1/4 in	0 in	-1/4 in	27 in	follow revised
Shoulder Slope	S&K08	Shoulder point perpendicular to HPS	false	Full	1/4 in	1 3/4 in	2 in	1/4 in	0 in	1 3/4 in	
Shoulder Seam Forward	S&K07	HPS to seam	false	Full	1/8 in	1/2 in	1/2 in	0 in	0 in	1/2 in	
Front Neck Drop	S&K04	HPS to neck seam	false	Full	1/8 in	4 in	4 in	0 in	0 in	4 in	
Back Neck Drop	S&K05	HPS to neck seam	false	Full	1/8 in	1 1/4 in	1 in	-1/4 in	0 in	1 1/4 in	go back to spec
Back Neck Width	S&K06	Seam to seam at back neck, at HPS point	false	Full	1/4 in	7 1/2 in	7 1/2 in	0 in	0 in	7 1/2 in	
Neck Trim Height	S&K020	Neck Seam to trim edge	false	Full	1/8 in	1 in	1 1/8 in	1/8 in	-1/8 in	7/8 in	follow revised
Minimum Neck Stretch	S&K199		true	Half	0 in	-	-		-	-	
Across Shoulder	S&K09	Seam to seam	false	Half	1/4 in	16 3/4 in	17 in	1/4 in	0 in	16 3/4 in	
Across Front/Across Back Position from HPS	eos7YR		true	Full	0 in	-	-		-	-	
Across Front	S&K010		false	Half	1/4 in	14 3/4 in	15 1/8 in	3/8 in	0 in	14 3/4 in	go back to spec
Across Back	S&K011		false	Half	1/4 in	15 1/2 in	15 1/2 in	0 in	0 in	15 1/2 in	
Chest Width	S&K012	1" Below armhole- edge to edge	true	Half	1/4 in	19 1/4 in	19 5/8 in	3/8 in	0 in	19 1/4 in	go back to spec
Bottom Opening Width- At Edge	S&K013	At bottom edge	true	Half	1/4 in	19 1/4 in	19 3/8 in	1/8 in	0 in	19 1/4 in	
Bottom Hem Height	S&K014	Bottom edge to stitch line or trim seam	false	Full	1/8 in	0 in	0 in	0 in	0 in	0 in	
Sleeve Length from CB Neck	S&K032	3-point measure from CB Neck to shoulder point to sleeve edge	true	Full	1/2 in	34 1/2 in	34 1/2 in	0 in	0 in	34 1/2 in	
Armhole Drop	S&K016	Below HPS - measure perpendicular	false	Full	1/4 in	11 in	11 3/8 in	3/8 in	0 in	11 in	go back to spec
Bicep Width	S&K017	1" below armhole- edge to edge	false	Half	1/4 in	7 1/2 in	7 3/8 in	-1/8 in	0 in	7 1/2 in	
Forearm Width	S&K033	9" up from sleeve cuff edge	false	Half	1/4 in	5 1/2 in	5 3/4 in	1/4 in	0 in	5 1/2 in	
Sleeve Opening Width- At Seam	S&K034	Width at Seam	false	Half	1/4 in	4 1/2 in	4 3/8 in	-1/8 in	0 in	4 1/2 in	
Sleeve Opening Width- At Edge	S&K73	At edge	false	Half	1/4 in	3 1/2 in	3 1/4 in	-1/4 in	0 in	3 1/2 in	
Sleeve Cuff Height	S&K36	Cuff edge to seam	false	Full	1/8 in	3 3/4 in	3 3/4 in	0 in	-3/4 in	3 in	follow revised
Loop Label Placement at Sideseam	S&K023	Bottom edge to bottom of loop label, at the WL side seam	false	Full	1/8 in	7 in	6 3/4 in	-1/4 in	0 in	7 in	go back to spec

PPS - Sarah Tota

CREATED ON NOV 26, 2025 5:02 PM

PPS: SIZE:M, CREATED AT: 11-24-2025

SS26CT098 Distressed Waffle Thermal

FITTING DATE: 11/25/2025**MODEL/ATTENDEES:** Cal, Anastasiya, Sarah, Hyeyoung, Jeni, Wes, Lombardo, Bigio**STATUS:** PPS approved to TOP (pending image of revised construction)**Fit Comments:**

1. Follow revised back body length of 27"
 2. Back neck drop came in -1/4", go back to spec
 3. Across front came in +3/8", go back to spec
 4. Chest width came in +3/8", go back to spec
 5. Armhole drop came in +3/8", go back to spec
 6. Sleeve cap came in -1/4", go back to spec
 7. Follow revised for sleeve cuff height of 3"
 8. Loop label came in -1/4", go back to spec
 9. Follow revised for neck trim height of 7/8"
 10. Minimum neck stretch POM was added to ensure minimum neck stretch is met for XS or let us know if grading needs to be revised
1. Làm theo chiều dài thân sau đã điều chỉnh là 27"
 2. Hạ cổ sau bị thiếu 1/4", quay lại thông số kỹ thuật
 3. Ngang ngực trước bị dư 3/8", quay lại thông số kỹ thuật
 4. Rộng ngực bị dư 3/8", quay lại thông số kỹ thuật
 5. Hạ nách bị dư 3/8", quay lại thông số kỹ thuật
 6. Cao đầu tay bị thiếu 1/4", quay lại thông số kỹ thuật
 7. Làm theo chiều cao bo tay đã điều chỉnh là 3"
 8. Nhân vòng bị thiếu 1/4", quay lại thông số kỹ thuật
 9. Làm theo chiều cao viền cổ đã điều chỉnh là 7/8"
 10. Đã thêm số đo độ căng cổ tối thiểu, đảm bảo đáp ứng độ căng cổ tối thiểu cho size XS hoặc cho chúng tôi biết nếu cần phải điều chỉnh cỡ nhảy size của cổ.

Construction Comments:

1. Updating collar construction to rib on fold - removing raw edge construction
 2. Updating cuff construction to rib on fold - removing raw edge construction
 3. Updating neck seam to edge stitch - see updated stitching details
 4. Updating armhole seam to straddle stitch - see updated stitching details
 5. Updating shoulder seam to straddle stitch - see updated stitching details
1. Cập nhật cấu trúc cổ áo thành bo gấp đôi – loại bỏ cấu trúc viền mép trần
 2. Cập nhật cấu trúc bo tay thành bo gấp đôi – loại bỏ cấu trúc viền mép trần
 3. Cập nhật đường may cổ thành đường may viền mép – xem chi tiết đường may đã cập nhật
 4. Cập nhật đường may nách thành đường may khóa ngang – xem chi tiết đường may đã cập nhật
 5. Cập nhật đường may vai thành đường may khóa ngang – xem chi tiết đường may đã cập nhật



Screenshot 2025-11-26 at 12.04.00 PM.jpg