

Soccer Jersey

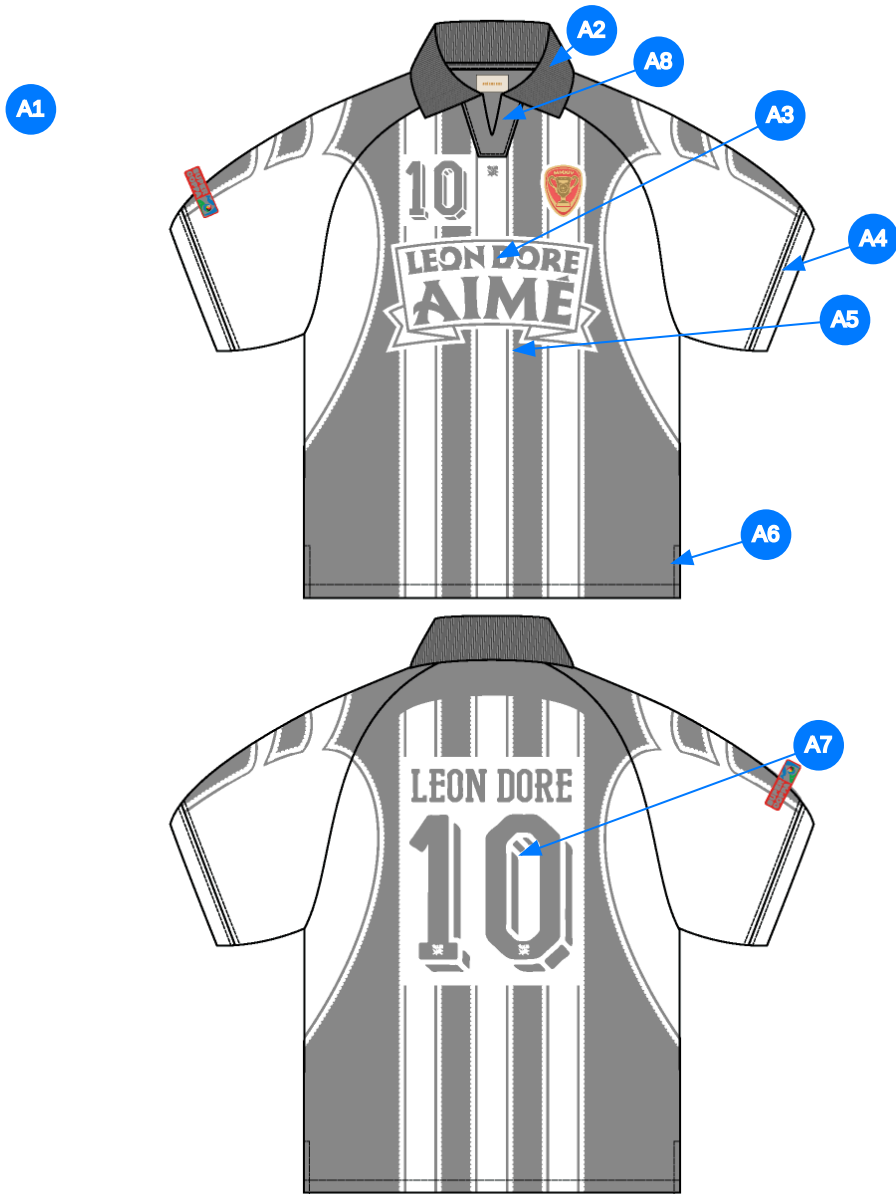
Name	Soccer Jersey
Style No.	SS26CT014
Division	Mens
Category	Tees
Season	Spring/Summer
Year	2026
Size Scale	<div>M</div> -Sample size <div><div>XS</div><div>S</div><div>M</div><div>L</div><div>XL</div><div>XXL</div></div>
Style Status	Adopted
Factory	UN-AVAILABLE
Designer Name	Wes
TD Name	Anastasiya
Created by/Author	12/1/2025 Anastasiya Zolotova anastasiya.zolotova@aimeleondore.com



1\_B&W-1



2\_CLR-1

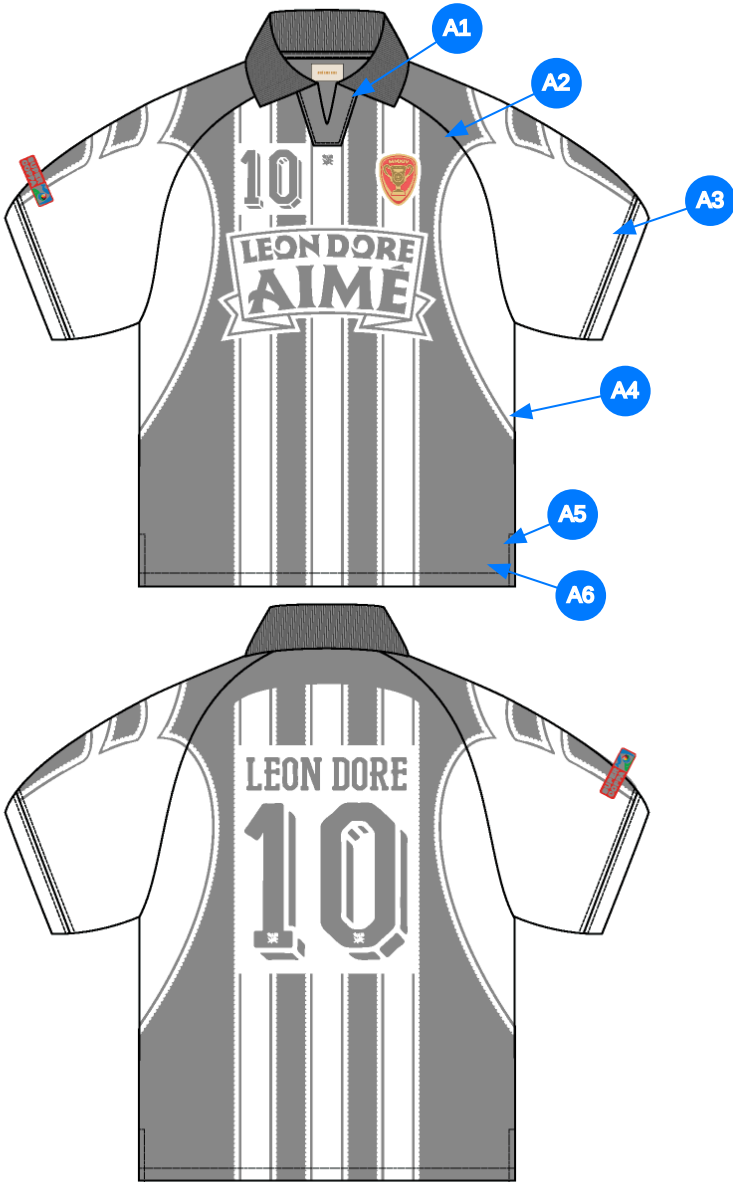


3\_Construction Details-1

Comments (8)

- A1 FIT: NOVELTY JERSEY (SS24CT025)
- A2 FNR @ COLLAR - SEE ADDITIONAL PAGE FOR COLLAR CONSTRUCTION DETAILS - POLY TAPE ALONG NECK
- A3 PRINTED ARTWORK @ BODY & SLEEVES - SEE ADDITIONAL FILE FOR ARTWORK DETAILS
- A4 PIECED ON SELF CUFF @ SLEEVE CUFF
- A5 ARTWORK @ CF - SEE ADDITIONAL FILE FOR ARTWORK DETAILS
- A6 VENT @ SIDE SEAM - TURNBACK W/ COVERLOCK
- A7 PRINTED ARTWORK @ BODY & SLEEVES - SEE ADDITIONAL FILE FOR LAYOUT DETAILS
- A8 SELF @ COLLAR PLACKET





Comments (6)

- A1** 1/4" SN TS @ NECK - EDGESTITCH @ PLACKET
- A2** CLEAN SEAM FINISH @ RAGLAN SEAM
- A3** 1/4" DNTS @ CUFF
- A4** CLEAN SEAM @ SIDE SEAM
- A5** SN TS @ VENT
- A6** 1/4" SN TS @ BOTTOM HEM

4\_Stitching Details-1

Sample Size: M

POINT OF MEASURE	HOW TO MEASURE	CRITICAL	TYPE	TOLERANCE	XS	S	M	L	XL	XXL
Front Body Length	HPS to bottom edge	true	Full	1/2 in	-7/8 in	-7/8 in	28 in	7/8 in	7/8 in	7/8 in
Back Body Length	CB neck seam to bottom edge	true	Full	1/2 in	-7/8 in	-7/8 in	27 1/4 in	7/8 in	7/8 in	7/8 in
Raglan Shoulder Slope	9 1/2" out from CB, at HPS line	false	Full	1/8 in	0 in	0 in	2 1/2 in	0 in	0 in	0 in
Front Neck Drop	HPS to neck seam	false	Full	1/8 in	-1/8 in	-1/8 in	3 1/2 in	1/8 in	1/8 in	1/8 in
Back Neck Drop	HPS to neck seam	false	Full	1/8 in	0 in	0 in	3/4 in	0 in	0 in	0 in
Back Neck Width	Seam to seam at back neck, at HPS point	false	Full	1/4 in	-1/4 in	-1/4 in	6 3/4 in	1/4 in	1/4 in	1/4 in
Minimum Neck Stretch		true	Half	0 in	0 in	0 in	11 1/2 in	0 in	0 in	0 in
CF Placket Length	CF neck drop to bottom of placket	true	Full	1/8 in	0 in	0 in	3 1/4 in	0 in	0 in	0 in
CF Placket Width @ Bottom Edge of Placket		false	Full	1/8 in	0 in	0 in	1 3/4 in	0 in	0 in	0 in
Front Raglan Seam Placement at Neck	HPS to seam straight down	false	Full	1/8 in	-1/8 in	-1/8 in	3 1/2 in	1/8 in	1/8 in	1/8 in
Back Raglan Seam Placement at Neck	HPS to seam straight down	false	Full	1/8 in	-1/8 in	-1/8 in	2 1/4 in	1/8 in	1/8 in	1/8 in
Across Front/Across Back Position from HPS		true	Full	0 in	-1/4 in	-1/4 in	7 in	1/4 in	1/4 in	1/4 in
Across Front	Down from HPS, Seam to seam	false	Half	1/4 in	-3/4 in	-3/4 in	12 1/2 in	3/4 in	1 in	1 in
Across Back	Down from HPS, Seam to Seam	false	Half	1/4 in	-3/4 in	-3/4 in	14 in	3/4 in	1 in	1 in
Chest Width	1" Below armhole- edge to edge	true	Half	1/4 in	-1 in	-1 in	22 1/2 in	1 in	1 1/2 in	1 1/2 in
Bottom Opening Width- At Edge	Straight with seam relaxed	true	Half	1/4 in	-1 in	-1 in	22 1/2 in	1 in	1 1/2 in	1 1/2 in
Side Slit Height	From bottom edge to top of slit	false	Full	1/8 in	0 in	0 in	2 in	0 in	0 in	0 in
Sleeve Length from CB Neck	3-point measure from CB Neck to shoulder point to sleeve edge	true	Full	3/8 in	-3/4 in	-3/4 in	19 in	3/4 in	1 in	1 in
Armhole Drop	Below HPS - measure perpendicular	false	Full	1/4 in	-3/8 in	-3/8 in	11 3/4 in	3/8 in	1/2 in	1/2 in
Bicep Width	1" below armhole- edge to edge	false	Half	1/4 in	-3/8 in	-3/8 in	8 3/4 in	3/8 in	1/2 in	1/2 in
Sleeve Opening Width- At Edge	At edge	false	Half	1/4 in	-1/4 in	-1/4 in	7 in	1/4 in	3/8 in	3/8 in
Sleeve Cuff Height		false	Full	1/8 in	0 in	0 in	7/8 in	0 in	0 in	0 in
Collar Point Length	Neck seam to collar point, along edge	false	Full	1/8 in	0 in	0 in	2 1/2 in	0 in	0 in	0 in
Collar Height at CB	Neck seam to collar edge at CB	false	Full	1/8 in	0 in	0 in	2 1/2 in	0 in	0 in	0 in
Collar Length along the edge	Collar point to collar point, along the edge	false	Full	3/8 in	-5/8 in	-5/8 in	17 in	5/8 in	5/8 in	5/8 in
CF Artwork Placement below Placket - Queens Crest		false	Full	1/8 in	-1/8 in	-1/8 in	3/4 in	1/8 in	1/8 in	1/8 in
CF Artwork Placement below CF Placket - "Leon Dore Aime"		false	Full	1/8 in	-1/8 in	-1/8 in	5 in	1/8 in	1/8 in	1/8 in
CB Artwork Placement below CB Neck Seam	From CB Neck Seam to Top Edge of Artwork	false	Full	1/8 in	0 in	0 in	5 1/2 in	0 in	0 in	0 in
WL Chest Artwork Placement from HPS to Top Edge		true	Full	1/8 in	-1/4 in	-1/4 in	7 1/2 in	1/4 in	1/4 in	1/4 in
WL Chest Artwork Placement Out from CF Line		false	Full	1/8 in	-1/8 in	-1/8 in	3 in	1/8 in	1/8 in	1/8 in
WR Chest Artwork Placement from HPS to Top Edge		false	Full	1/8 in	-1/4 in	-1/4 in	7 1/2 in	1/4 in	1/4 in	1/4 in
WR Chest Artwork Placement Out from CF Line		false	Full	1/8 in	-1/8 in	-1/8 in	1 3/4 in	1/8 in	1/8 in	1/8 in
WR Sleeve Artwork Placement from Hem to Bottom Edge of Artwork		false	Full	1/8 in	0 in	0 in	2 in	0 in	0 in	0 in
WR Sleeve Artwork Centered on Sleeve Fold		true	Full	1/8 in	0 in	0 in	0 in	0 in	0 in	0 in

Sample Size: M

POINT OF MEASURE	HOW TO MEASURE	CRITICAL	TYPE	TOLERANCE	XS	S	M	L	XL	XXL
Front Body Length	HPS to bottom edge	true	Full	1/2 in	26 1/4 in	27 1/8 in	28 in	28 7/8 in	29 3/4 in	30 5/8 in
Back Body Length	CB neck seam to bottom edge	true	Full	1/2 in	25 1/2 in	26 3/8 in	27 1/4 in	28 1/8 in	29 in	29 7/8 in
Raglan Shoulder Slope	9 1/2" out from CB, at HPS line	false	Full	1/8 in	2 1/2 in	2 1/2 in	2 1/2 in	2 1/2 in	2 1/2 in	2 1/2 in
Front Neck Drop	HPS to neck seam	false	Full	1/8 in	3 1/4 in	3 3/8 in	3 1/2 in	3 5/8 in	3 3/4 in	3 7/8 in
Back Neck Drop	HPS to neck seam	false	Full	1/8 in	3/4 in	3/4 in	3/4 in	3/4 in	3/4 in	3/4 in
Back Neck Width	Seam to seam at back neck, at HPS point	false	Full	1/4 in	6 1/4 in	6 1/2 in	6 3/4 in	7 in	7 1/4 in	7 1/2 in
Minimum Neck Stretch		true	Half	0 in	11 1/2 in	11 1/2 in	11 1/2 in	11 1/2 in	11 1/2 in	11 1/2 in
CF Placket Length	CF neck drop to bottom of placket	true	Full	1/8 in	3 1/4 in	3 1/4 in	3 1/4 in	3 1/4 in	3 1/4 in	3 1/4 in
CF Placket Width @ Bottom Edge of Placket		false	Full	1/8 in	1 3/4 in	1 3/4 in	1 3/4 in	1 3/4 in	1 3/4 in	1 3/4 in
Front Raglan Seam Placement at Neck	HPS to seam straight down	false	Full	1/8 in	3 1/4 in	3 3/8 in	3 1/2 in	3 5/8 in	3 3/4 in	3 7/8 in
Back Raglan Seam Placement at Neck	HPS to seam straight down	false	Full	1/8 in	2 in	2 1/8 in	2 1/4 in	2 3/8 in	2 1/2 in	2 5/8 in
Across Front/Across Back Position from HPS		true	Full	0 in	6 1/2 in	6 3/4 in	7 in	7 1/4 in	7 1/2 in	7 3/4 in
Across Front	Down from HPS, Seam to seam	false	Half	1/4 in	11 in	11 3/4 in	12 1/2 in	13 1/4 in	14 1/4 in	15 1/4 in
Across Back	Down from HPS, Seam to Seam	false	Half	1/4 in	12 1/2 in	13 1/4 in	14 in	14 3/4 in	15 3/4 in	16 3/4 in
Chest Width	1" Below armhole- edge to edge	true	Half	1/4 in	20 1/2 in	21 1/2 in	22 1/2 in	23 1/2 in	25 in	26 1/2 in
Bottom Opening Width- At Edge	Straight with seam relaxed	true	Half	1/4 in	20 1/2 in	21 1/2 in	22 1/2 in	23 1/2 in	25 in	26 1/2 in
Side Slit Height	From bottom edge to top of slit	false	Full	1/8 in	2 in	2 in	2 in	2 in	2 in	2 in
Sleeve Length from CB Neck	3-point measure from CB Neck to shoulder point to sleeve edge	true	Full	3/8 in	17 1/2 in	18 1/4 in	19 in	19 3/4 in	20 3/4 in	21 3/4 in
Armhole Drop	Below HPS - measure perpendicular	false	Full	1/4 in	11 in	11 3/8 in	11 3/4 in	12 1/8 in	12 5/8 in	13 1/8 in
Bicep Width	1" below armhole- edge to edge	false	Half	1/4 in	8 in	8 3/8 in	8 3/4 in	9 1/8 in	9 5/8 in	10 1/8 in
Sleeve Opening Width- At Edge	At edge	false	Half	1/4 in	6 1/2 in	6 3/4 in	7 in	7 1/4 in	7 5/8 in	8 in
Sleeve Cuff Height		false	Full	1/8 in	7/8 in	7/8 in	7/8 in	7/8 in	7/8 in	7/8 in
Collar Point Length	Neck seam to collar point, along edge	false	Full	1/8 in	2 1/2 in	2 1/2 in	2 1/2 in	2 1/2 in	2 1/2 in	2 1/2 in
Collar Height at CB	Neck seam to collar edge at CB	false	Full	1/8 in	2 1/2 in	2 1/2 in	2 1/2 in	2 1/2 in	2 1/2 in	2 1/2 in
Collar Length along the edge	Collar point to collar point, along the edge	false	Full	3/8 in	15 3/4 in	16 3/8 in	17 in	17 5/8 in	18 1/4 in	18 7/8 in
CF Artwork Placement below Placket - Queens Crest		false	Full	1/8 in	1/2 in	5/8 in	3/4 in	7/8 in	1 in	1 1/8 in
CF Artwork Placement below CF Placket - "Leon Dore Aime"		false	Full	1/8 in	4 3/4 in	4 7/8 in	5 in	5 1/8 in	5 1/4 in	5 3/8 in
CB Artwork Placement below CB Neck Seam	From CB Neck Seam to Top Edge of Artwork	false	Full	1/8 in	5 1/2 in	5 1/2 in	5 1/2 in	5 1/2 in	5 1/2 in	5 1/2 in
WL Chest Artwork Placement from HPS to Top Edge		true	Full	1/8 in	7 in	7 1/4 in	7 1/2 in	7 3/4 in	8 in	8 1/4 in
WL Chest Artwork Placement Out from CF Line		false	Full	1/8 in	2 3/4 in	2 7/8 in	3 in	3 1/8 in	3 1/4 in	3 3/8 in
WR Chest Artwork Placement from HPS to Top Edge		false	Full	1/8 in	7 in	7 1/4 in	7 1/2 in	7 3/4 in	8 in	8 1/4 in
WR Chest Artwork Placement Out from CF Line		false	Full	1/8 in	1 1/2 in	1 5/8 in	1 3/4 in	1 7/8 in	2 in	2 1/8 in
WR Sleeve Artwork Placement from Hem to Bottom Edge of Artwork		false	Full	1/8 in	2 in	2 in	2 in	2 in	2 in	2 in
WR Sleeve Artwork Centered on Sleeve Fold		true	Full	1/8 in	0 in	0 in	0 in	0 in	0 in	0 in

Measured Size: M

POINT OF MEASURE	HOW TO MEASURE	CRITICAL	TYPE	TOLERANCE	EXPECTED	PPS - RCVD	VARIANCE	ADJUST BY +/-	REVISED SPEC	MEASUREMENT NOTES
Front Body Length	HPS to bottom edge	true	Full	1/2 in	28 in	27 3/4 in	-1/4 in	0 in	28 in	
Back Body Length	CB neck seam to bottom edge	true	Full	1/2 in	27 1/4 in	27 3/8 in	1/8 in	0 in	27 1/4 in	
Raglan Shoulder Slope	9 1/2" out from CB, at HPS line	false	Full	1/8 in	2 1/2 in	2 1/2 in	0 in	0 in	2 1/2 in	
Front Neck Drop	HPS to neck seam	false	Full	1/8 in	3 1/2 in	3 1/2 in	0 in	0 in	3 1/2 in	
Back Neck Drop	HPS to neck seam	false	Full	1/8 in	3/4 in	3/4 in	0 in	0 in	3/4 in	
Back Neck Width	Seam to seam at back neck, at HPS point	false	Full	1/4 in	6 3/4 in	6 3/4 in	0 in	0 in	6 3/4 in	
Minimum Neck Stretch		true	Half	0 in	11 1/2 in	11 1/2 in	0 in	0 in	11 1/2 in	
CF Placket Length	CF neck drop to bottom of placket	true	Full	1/8 in	3 1/4 in	3 in	-1/4 in	0 in	3 1/4 in	Back to Spec
CF Placket Width @ Bottom Edge of Placket		false	Full	1/8 in	1 3/4 in	1 3/4 in	0 in	0 in	1 3/4 in	
Front Raglan Seam Placement at Neck	HPS to seam straight down	false	Full	1/8 in	3 1/2 in	3 1/2 in	0 in	0 in	3 1/2 in	
Back Raglan Seam Placement at Neck	HPS to seam straight down	false	Full	1/8 in	2 1/4 in	2 1/8 in	-1/8 in	0 in	2 1/4 in	
Across Front/Across Back Position from HPS		true	Full	0 in	0 in	0 in	0 in	7 in	7 in	Add
Across Front	Down from HPS, Seam to seam	false	Half	1/4 in	12 1/2 in	13 in	1/2 in	0 in	12 1/2 in	Back to Spec
Across Back	Down from HPS, Seam to Seam	false	Half	1/4 in	14 in	14 1/4 in	1/4 in	0 in	14 in	
Chest Width	1" Below armhole- edge to edge	true	Half	1/4 in	22 1/2 in	22 1/2 in	0 in	0 in	22 1/2 in	
Bottom Opening Width- At Edge	Straight with seam relaxed	true	Half	1/4 in	22 1/2 in	22 3/4 in	1/4 in	0 in	22 1/2 in	
Side Slit Height	From bottom edge to top of slit	false	Full	1/8 in	2 in	1 7/8 in	-1/8 in	0 in	2 in	
Sleeve Length from CB Neck	3-point measure from CB Neck to shoulder point to sleeve edge	true	Full	3/8 in	18 1/2 in	18 1/2 in	0 in	1/2 in	19 in	Increase
Armhole Drop	Below HPS - measure perpendicular	false	Full	1/4 in	11 3/4 in	11 3/4 in	0 in	0 in	11 3/4 in	
Bicep Width	1" below armhole- edge to edge	false	Half	1/4 in	8 3/4 in	9 in	1/4 in	0 in	8 3/4 in	
Sleeve Opening Width- At Edge	At edge	false	Half	1/4 in	7 in	7 in	0 in	0 in	7 in	
Sleeve Cuff Height		false	Full	1/8 in	7/8 in	7/8 in	0 in	0 in	7/8 in	
Collar Point Length	Neck seam to collar point, along edge	false	Full	1/8 in	2 1/2 in	2 1/2 in	0 in	0 in	2 1/2 in	
Collar Height at CB	Neck seam to collar edge at CB	false	Full	1/8 in	2 1/2 in	2 1/2 in	0 in	0 in	2 1/2 in	
Collar Length along the edge	Collar point to collar point, along the edge	false	Full	3/8 in	17 in	16 1/2 in	-1/2 in	0 in	17 in	Back to Spec
CF Artwork Placement below Placket - Queens Crest		false	Full	1/8 in	3/4 in	7/8 in	1/8 in	0 in	3/4 in	
CF Artwork Placement below CF Placket - "Leon Dore Aime"		false	Full	1/8 in	5 in	5 in	0 in	0 in	5 in	
CB Artwork Placement below CB Neck Seam	From CB Neck Seam to Top Edge of Artwork	false	Full	1/8 in	5 1/2 in	5 1/2 in	0 in	0 in	5 1/2 in	
WL Chest Artwork Placement from HPS to Top Edge		true	Full	1/8 in	7 1/2 in	7 1/2 in	0 in	0 in	7 1/2 in	
WL Chest Artwork Placement Out from CF Line		false	Full	1/8 in	3 in	2 7/8 in	-1/8 in	0 in	3 in	
WR Chest Artwork Placement from HPS to Top Edge		false	Full	1/8 in	7 1/2 in	7 1/2 in	0 in	0 in	7 1/2 in	
WR Chest Artwork Placement Out from CF Line		false	Full	1/8 in	1 3/4 in	1 3/4 in	0 in	0 in	1 3/4 in	

WR Sleeve Artwork Placement from Hem to Bottom Edge of Artwork		false	Full	1/8 in	2 in	3 in	1 in	0 in	2 in	Back to Spec
WR Sleeve Artwork Centered on Sleeve Fold		true	Full	1/8 in	0 in	0 in	0 in	0 in	0 in	

## PPS - Anastasiya Zolotova

CREATED ON DEC 1, 2025 5:08 PM

PPS: SIZE:M, CREATED AT: 11-24-2025

SS26CT014 Soccer Jersey

**FITTING DATE:** 11/25/25**MODEL/ATTENDEES:** Anthony, Wes, Lombardo, Cal, Anastasiya, Hyeyoung, Jeni**STATUS:** PPS Approved to TOP (Pending mini marker approval)

\*Sub color on collar.

**Fit Comments:**

1. CF placket length came in -1/4", go back to spec.
2. Across front came in +1/2", go back to spec. See image.
3. Increase sleeve length to 19"
4. Collar length along top edge came in -1/2" go back to spec.
5. WR sleeve artwork placement came in +1", please note artwork placement measured from sleeve edge to bottom edge of artwork, see image.

**Construction:**

1. Change placket stitching to single needle edge stitch, see image. Construction callout updated.
2. CF placket where bar tack is position has loose thread, messy stitching. Please clean up stitching.
3. Bleeding on garment, fty called out mistake pls ensure production does not have bleeding on base color white.
4. For sleeve inseam construction can fty finish self cuff seam allowance on the interior as reference sample, see image.
5. Eliminate top stitching at sleeve inseam exterior.
6. Interior overlock stitching is very messy, with lots of back stitching. Please ensure continuous clean stitching at seam interior. See reference image.
7. Main label needle thread to match label bobbin thread to match body fabric. The bobbin thread is too visible on PPS, improve workmanship.

1. Đổi đường may nẹp thành đường may đơn kim sát mép. Xem hình ảnh. Chú thích cấu trúc đã được cập nhật.
2. Tại vị trí đính bọ trên nẹp giữa thân trước, có chỉ thừa và đường may lộn xộn, không sạch sẽ. Vui lòng làm sạch đường may.
3. Sản phẩm bị lem màu trên vải. Nhà máy đã xác nhận lỗi này. Vui lòng đảm bảo sản xuất đại trà không bị lem màu trên nền vải trắng.
4. Đối với cấu trúc đường may dọc tay áo, nhà máy có thể hoàn thiện đường may viền tự thân ở mặt trong giống như mẫu tham khảo hay không? Xem hình ảnh.
5. Loại bỏ đường may điều ở mặt ngoài của đường may dọc tay áo.
6. Đường may vắt sổ mặt trong rất lộn xộn, có nhiều đường may lùi. Vui lòng đảm bảo đường may liên tục và sạch sẽ ở mặt trong đường may. Xem hình ảnh tham khảo.
7. Chỉ kim may nhấn chính cần khớp với chỉ suốt của nhãn và khớp với màu vải thân chính. Chỉ suốt đang quá lộ rõ trên mẫu PPS. Cần cải thiện tay nghề

1. Độ dài nẹp giữa thân trước bị ngắn hơn 1/4 inch, vui lòng quay lại thông số kỹ thuật đã quy định.
2. Ngang thân trước bị lớn hơn 1/2 inch, vui lòng quay lại thông số kỹ thuật. Xem hình ảnh.
3. Tăng chiều dài tay áo lên 19 inch.
4. Độ dài vòng cổ dọc theo cạnh trên bị ngắn hơn 1/2 inch, vui lòng quay lại thông số kỹ thuật.
5. Vị trí hình in trên tay áo phải người mặc bị lệch 1 inch. Lưu ý: Vị trí hình in/thêu được đo từ cạnh tay áo đến cạnh dưới của hình in. Xem hình ảnh



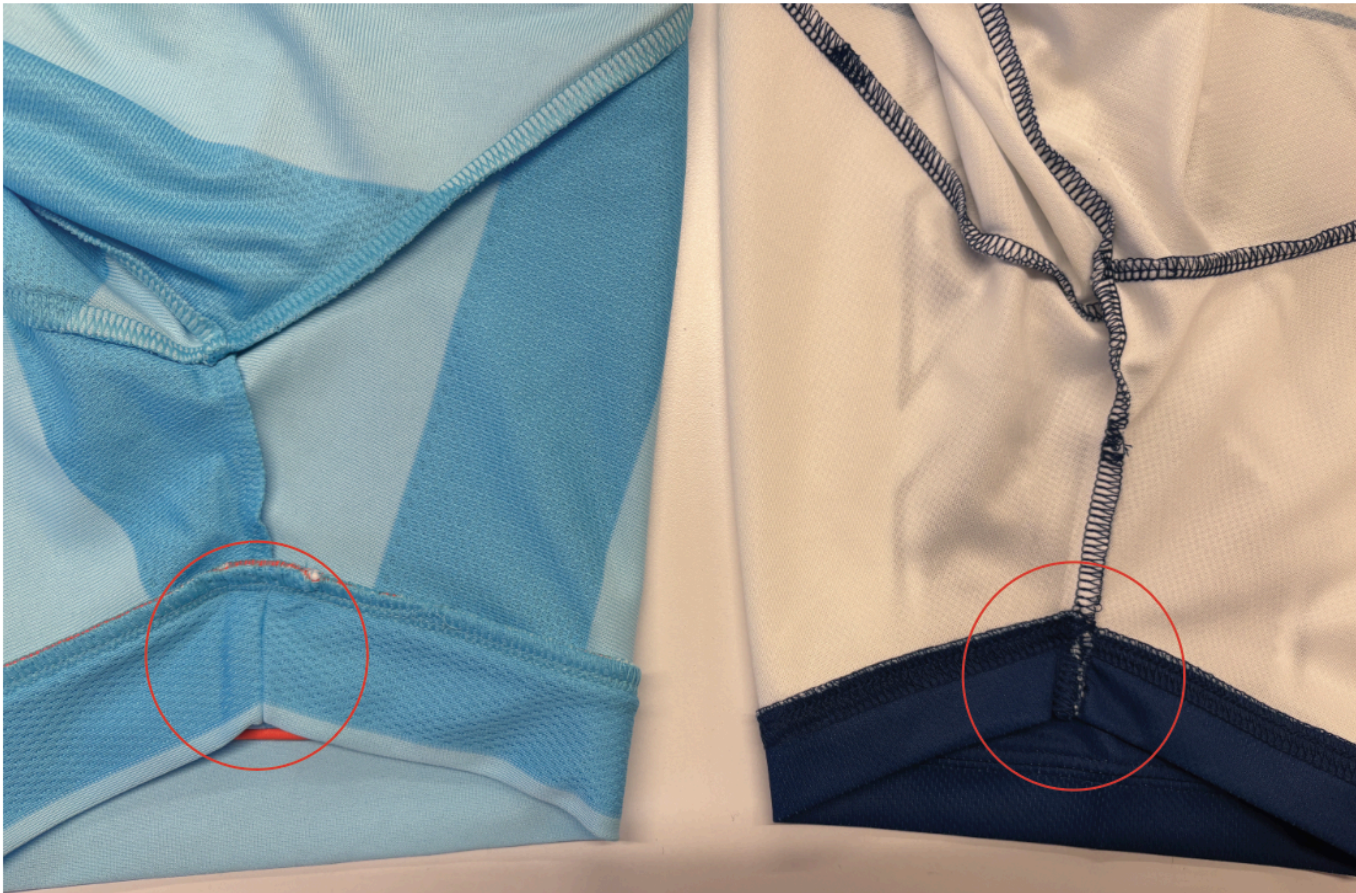


Screen Shot 2025-11-26 at 7.41.38 PM.jpg

Đối với cấu trúc đường may dọc tay áo, nhà máy có thể hoàn thiện đường may viền tự thân ở mặt trong giống như mẫu tham khảo hay không? Xem hình ảnh.

### SS26CT014 Soccer Jersey

For sleeve inseam construction can fty finish self cuff seam allowance on the interior as reference sample, see image.



Screen Shot 2025-12-01 at 4.42.34 PM.jpg



Đường may vắt sổ mặt trong rất lộn xộn, có nhiều đường may lùi. Vui lòng đảm bảo đường may liên tục và sạch sẽ ở mặt trong đường may. Xem hình ảnh tham khảo.

SS26CT014 Soccer Jersey

Interior overlock stitching is very messy, with lots of back stitching.  
Please ensure continuous clean stitching at seam interior. See reference image.



Screen Shot 2025-12-01 at 4.46.00 PM.jpg

Ngang thân trước bị lớn hơn 1/2 inch

SS26CT014 Soccer Jersey

Across front came in +1/2", go back to spec.



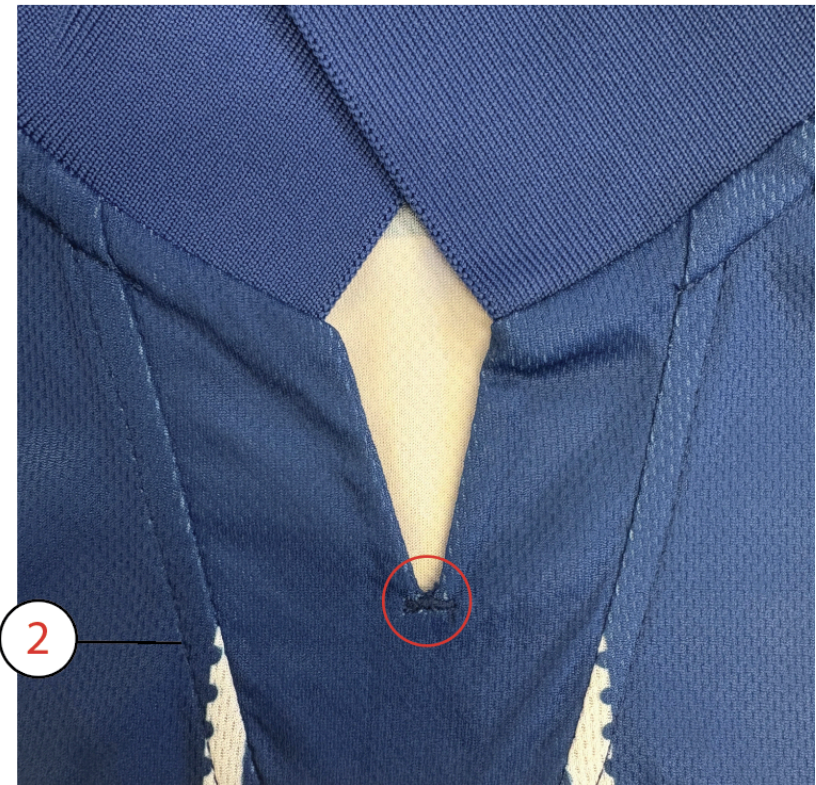
Screen Shot 2025-12-01 at 4.47.39 PM.jpg



1. Tại vị trí đính bọ trên nếp giữa thân trước, có chỉ thừa và đường may lộn xộn, không sạch sẽ. Vui lòng làm sạch đường may
2. Đổi đường may nếp thành đường may đơn kim sát mép. Xem hình ảnh. Chú thích cấu trúc đã được cập nhật.

### SS26CT014 Soccer Jersey

1. CF placket where bar tack is position has loose thread, messy stitching. Please clean up stitching.
2. Change placket to be single needle edge stitch



Screen Shot 2025-12-01 at 4.52.36 PM.jpg



Chỉ kim may nhãn chính cần khớp với chỉ suốt của nhãn và khớp với màu vải thân chính. Chỉ suốt đang quá lộ rõ trên mẫu PPS. Cần cải thiện tay nghề

### SS26CT014 Soccer Jersey

Main label needle thread to match label bobbin thread to match body fabric. The bobbin thread is too visible on PPS, improve workmanship.



Screen Shot 2025-12-01 at 4.55.49 PM.jpg

Sản phẩm bị lem màu trên vải. Nhà máy đã xác nhận lỗi này. Vui lòng đảm bảo sản xuất đại trà không bị lem màu trên nền vải trắng.

**SS26CT014 Soccer Jersey**

Bleeding on garment, fty called out mistake pls ensure production does not have bleeding on base color.



Screen Shot 2025-12-01 at 4.57.41 PM.jpg



Vị trí hình in trên tay áo phải người mặc bị lệch 1 inch. Lưu ý: Vị trí hình in/thêu được đo từ cạnh tay áo đến cạnh dưới của hình in. Xem hình ảnh

**SS26CT014 Soccer Jersey**

WR sleeve artwork placement came in +1", please note artwork placement measured from sleeve edge to bottom edge of artwork, see below.



Screen Shot 2025-12-01 at 4.59.46 PM.jpg