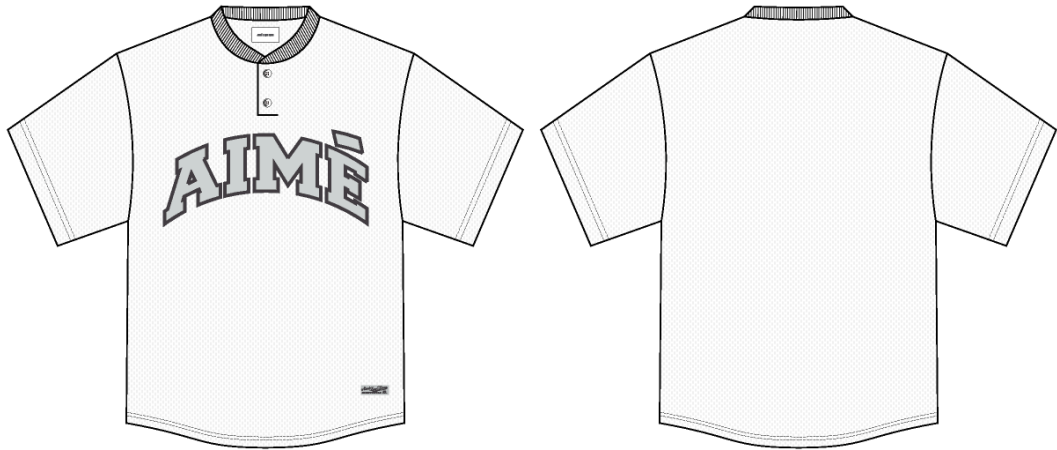


Mesh Practice Jersey

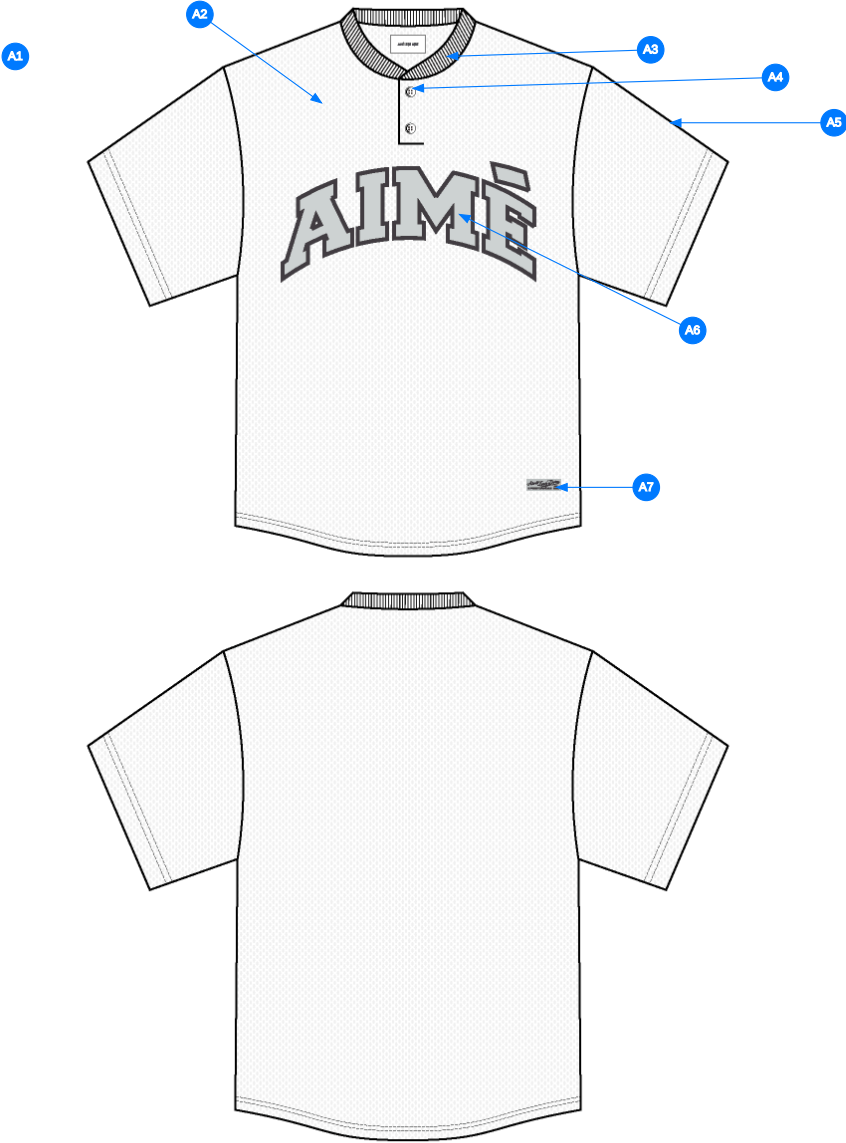
Name	Mesh Practice Jersey
Style No.	SS26CT100
Division	Mens
Category	Jerseys
Season	Spring/Summer
Year	2026
Size Scale	<div>M</div> -Sample size <div><div>XS</div><div>S</div><div>M</div><div>L</div><div>XL</div><div>XXL</div></div>
Style Status	Adopted
Factory	UN-AVAILABLE
Designer Name	Lonz
TD Name	Anastasiya
Created by/Author	9/18/2025 Anastasiya Zolotova anastasiya.zolotova@aimeleondore.com



1\_B&W-1



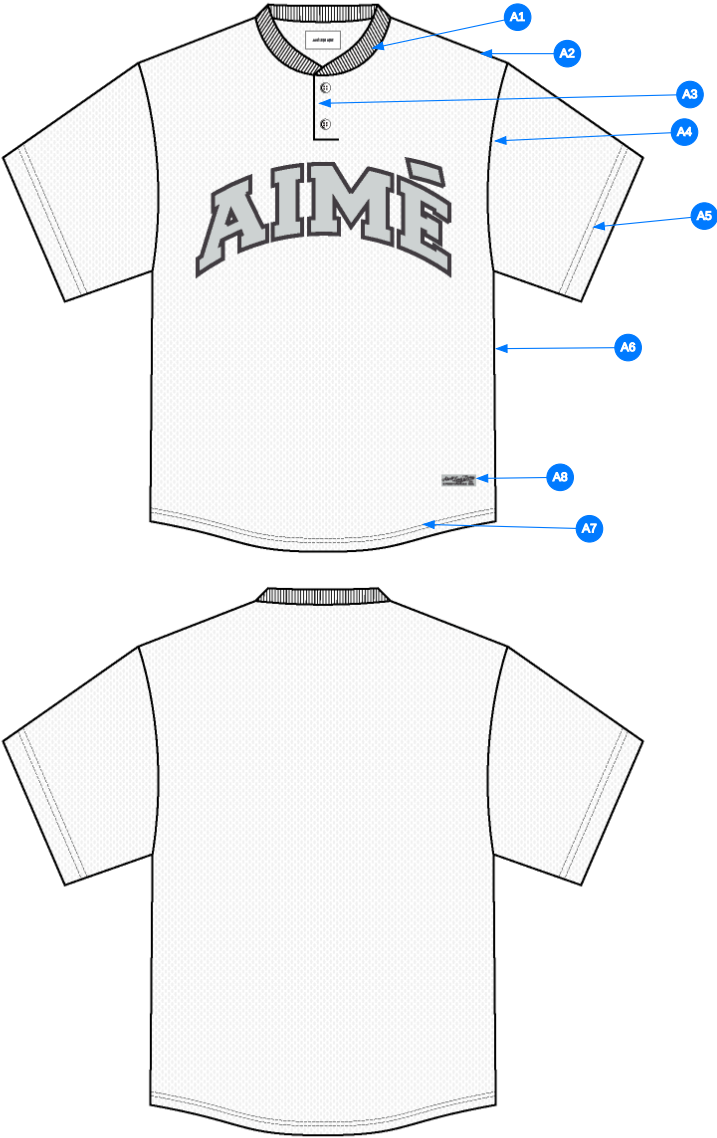
2\_CLR-1



Comments (7)

- A1** FIT: MESH BASEBALL JERSEY (SS24CS005)
- A2** MESH @ BODY & SLEEVES
- A3** 1X1 RIB DOUBLED @ NECK TRIM
- A4** GROWN ON BUTTON PLACKET @ CF
- A5** ARTWORK @ WL SLEEVE - SEE SEPARATE FILE FOR ARTWORK DETAILS
- A6** ARTWORK @ CF - SEE SEPARATE FILE FOR ARTWORK DETAILS
- A7** WOVEN LABEL @ BOTTOM HEM

3\_Construction Details-1



Comments (8)

- A1** 1/8" SN TS @ NECK
- A2** CLEAN SEAM FINISH @ SHOULDER
- A3** CLEAN SEAM FINISH @ BUTTON PLACKET
- A4** CLEAN SEAM FINISH @ ARMHOLE
- A5** 1/4" DN TS @ SLEEVE OPENING
- A6** CLEAN SEAM FINISH @ SIDE SEAM
- A7** 1/4" DN TS @ BOTTOM HEM
- A8** SNES AROUND LABEL

4\_Stitching Details-1

Sample Size: M

POINT OF MEASURE	HOW TO MEASURE	CRITICAL	TYPE	TOLERANCE	XS	S	M	L	XL	XXL
Front Body Length	HPS to bottom edge	true	Full	1/2 in	-7/8 in	-7/8 in	28 in	7/8 in	7/8 in	7/8 in
Back Body Length	CB neck seam to bottom edge	true	Full	1/2 in	-7/8 in	-7/8 in	27 in	7/8 in	7/8 in	7/8 in
Shoulder Seam Forward	HPS to seam	false	Full	1/8 in	0 in	0 in	1/2 in	0 in	0 in	0 in
Shoulder Slope	Shoulder point perpendicular to HPS	false	Full	1/4 in	0 in	0 in	2 in	0 in	0 in	0 in
Front Neck Drop	HPS to neck seam	false	Full	1/8 in	-1/8 in	-1/8 in	4 1/4 in	1/8 in	1/8 in	1/8 in
Back Neck Drop	HPS to neck seam	false	Full	1/8 in	0 in	0 in	1 in	0 in	0 in	0 in
Back Neck Width	Seam to seam at back neck, at HPS point	false	Full	1/4 in	-1/4 in	-1/4 in	7 in	1/4 in	1/4 in	1/4 in
Neck Trim Height	Neck Seam to trim edge (before folded)	false	Full	1/8 in	0 in	0 in	1 in	0 in	0 in	0 in
Across Shoulder	Seam to seam	false	Half	1/4 in	-3/4 in	-3/4 in	20 in	3/4 in	1 in	1 in
Across Front/Across Back Position from HPS		true	Full	0 in	-1/4 in	-1/4 in	7 in	1/4 in	1/4 in	1/4 in
Across Front	Down from HPS, Seam to seam	false	Half	1/4 in	-3/4 in	-3/4 in	17 3/4 in	3/4 in	1 in	1 in
Across Back	Down from HPS, Seam to Seam	false	Half	1/4 in	-3/4 in	-3/4 in	18 1/4 in	3/4 in	1 in	1 in
Chest Width	1" Below armhole- edge to edge	true	Half	1/4 in	-1 in	-1 in	24 in	1 in	1 1/2 in	1 1/2 in
Bottom Opening Width- At Edge	At bottom edge	true	Half	1/4 in	-1 in	-1 in	23 1/2 in	1 in	1 1/2 in	1 1/2 in
Bottom Hem Height	Bottom edge to stitch line or trim seam	false	Full	1/8 in	0 in	0 in	1/2 in	0 in	0 in	0 in
Sleeve Length from CB Neck	3-point measure from CB Neck to shoulder point to sleeve edge	true	Full	3/8 in	-3/4 in	-3/4 in	19 1/2 in	3/4 in	1 in	1 in
Armhole Drop	Below HPS - measure perpendicular	false	Full	1/4 in	-3/8 in	-3/8 in	11 3/4 in	3/8 in	1/2 in	1/2 in
Bicep Width	1" below armhole- edge to edge	false	Half	1/4 in	-3/8 in	-3/8 in	9 3/4 in	3/8 in	1/2 in	1/2 in
Sleeve Opening Width- At Edge	At edge	false	Half	1/4 in	-1/4 in	-1/4 in	8 1/2 in	1/4 in	3/8 in	3/8 in
Sleeve Hem Height		false	Full	1/8 in	0 in	0 in	7/8 in	0 in	0 in	0 in
CF Placket Width	Width of placket edge to edge	false	Full	1/8 in	0 in	0 in	1 1/2 in	0 in	0 in	0 in
CF Placket Length	CF neck drop to bottom of placket	true	Full	1/8 in	0 in	0 in	3 3/4 in	0 in	0 in	0 in
1st Button Placement from CF Neck Edge to Button Center		false	Full	1/8 in	0 in	0 in	3/4 in	0 in	0 in	0 in
Last Button Placement Up from Hem		false	Full	1/8 in	0 in	0 in	7/8 in	0 in	0 in	0 in
Shirt Tail Height		true	Full	1/8 in	0 in	0 in	2 in	0 in	0 in	0 in
CF Artwork Placement below CF Neckline	From CF Neck Seam to Top Edge of Artwork	false	Full	1/8 in	-1/8 in	-1/8 in	4 1/2 in	1/8 in	1/8 in	1/8 in
Small Woven Label Placement Up from Hem Edge		false	Full	1/8 in	0 in	0 in	1 3/4 in	0 in	0 in	0 in
Small Woven Label Placement in from Sideseam		false	Full	1/8 in	0 in	0 in	2 1/4 in	0 in	0 in	0 in
Loop Label Placement at Sideseam	Bottom edge to bottom of loop label, at the WL side seam	false	Full	1/8 in	0 in	0 in	7 in	0 in	0 in	0 in

Sample Size: M

POINT OF MEASURE	HOW TO MEASURE	CRITICAL	TYPE	TOLERANCE	XS	S	M	L	XL	XXL
Front Body Length	HPS to bottom edge	true	Full	1/2 in	26 1/4 in	27 1/8 in	28 in	28 7/8 in	29 3/4 in	30 5/8 in
Back Body Length	CB neck seam to bottom edge	true	Full	1/2 in	25 1/4 in	26 1/8 in	27 in	27 7/8 in	28 3/4 in	29 5/8 in
Shoulder Seam Forward	HPS to seam	false	Full	1/8 in	1/2 in	1/2 in	1/2 in	1/2 in	1/2 in	1/2 in
Shoulder Slope	Shoulder point perpendicular to HPS	false	Full	1/4 in	2 in	2 in	2 in	2 in	2 in	2 in
Front Neck Drop	HPS to neck seam	false	Full	1/8 in	4 in	4 1/8 in	4 1/4 in	4 3/8 in	4 1/2 in	4 5/8 in
Back Neck Drop	HPS to neck seam	false	Full	1/8 in	1 in	1 in	1 in	1 in	1 in	1 in
Back Neck Width	Seam to seam at back neck, at HPS point	false	Full	1/4 in	6 1/2 in	6 3/4 in	7 in	7 1/4 in	7 1/2 in	7 3/4 in
Neck Trim Height	Neck Seam to trim edge (before folded)	false	Full	1/8 in	1 in	1 in	1 in	1 in	1 in	1 in
Across Shoulder	Seam to seam	false	Half	1/4 in	18 1/2 in	19 1/4 in	20 in	20 3/4 in	21 3/4 in	22 3/4 in
Across Front/Across Back Position from HPS		true	Full	0 in	6 1/2 in	6 3/4 in	7 in	7 1/4 in	7 1/2 in	7 3/4 in
Across Front	Down from HPS, Seam to seam	false	Half	1/4 in	16 1/4 in	17 in	17 3/4 in	18 1/2 in	19 1/2 in	20 1/2 in
Across Back	Down from HPS, Seam to Seam	false	Half	1/4 in	16 3/4 in	17 1/2 in	18 1/4 in	19 in	20 in	21 in
Chest Width	1" Below armhole- edge to edge	true	Half	1/4 in	22 in	23 in	24 in	25 in	26 1/2 in	28 in
Bottom Opening Width- At Edge	At bottom edge	true	Half	1/4 in	21 1/2 in	22 1/2 in	23 1/2 in	24 1/2 in	26 in	27 1/2 in
Bottom Hem Height	Bottom edge to stitch line or trim seam	false	Full	1/8 in	1/2 in	1/2 in	1/2 in	1/2 in	1/2 in	1/2 in
Sleeve Length from CB Neck	3-point measure from CB Neck to shoulder point to sleeve edge	true	Full	3/8 in	18 in	18 3/4 in	19 1/2 in	20 1/4 in	21 1/4 in	22 1/4 in
Armhole Drop	Below HPS - measure perpendicular	false	Full	1/4 in	11 in	11 3/8 in	11 3/4 in	12 1/8 in	12 5/8 in	13 1/8 in
Bicep Width	1" below armhole- edge to edge	false	Half	1/4 in	9 in	9 3/8 in	9 3/4 in	10 1/8 in	10 5/8 in	11 1/8 in
Sleeve Opening Width- At Edge	At edge	false	Half	1/4 in	8 in	8 1/4 in	8 1/2 in	8 3/4 in	9 1/8 in	9 1/2 in
Sleeve Hem Height		false	Full	1/8 in	7/8 in	7/8 in	7/8 in	7/8 in	7/8 in	7/8 in
CF Placket Width	Width of placket edge to edge	false	Full	1/8 in	1 1/2 in	1 1/2 in	1 1/2 in	1 1/2 in	1 1/2 in	1 1/2 in
CF Placket Length	CF neck drop to bottom of placket	true	Full	1/8 in	3 3/4 in	3 3/4 in	3 3/4 in	3 3/4 in	3 3/4 in	3 3/4 in
1st Button Placement from CF Neck Edge to Button Center		false	Full	1/8 in	3/4 in	3/4 in	3/4 in	3/4 in	3/4 in	3/4 in
Last Button Placement Up from Hem		false	Full	1/8 in	7/8 in	7/8 in	7/8 in	7/8 in	7/8 in	7/8 in
Shirt Tail Height		true	Full	1/8 in	2 in	2 in	2 in	2 in	2 in	2 in
CF Artwork Placement below CF Neckline	From CF Neck Seam to Top Edge of Artwork	false	Full	1/8 in	4 1/4 in	4 3/8 in	4 1/2 in	4 5/8 in	4 3/4 in	4 7/8 in
Small Woven Label Placement Up from Hem Edge		false	Full	1/8 in	1 3/4 in	1 3/4 in	1 3/4 in	1 3/4 in	1 3/4 in	1 3/4 in
Small Woven Label Placement in from Sideseam		false	Full	1/8 in	2 1/4 in	2 1/4 in	2 1/4 in	2 1/4 in	2 1/4 in	2 1/4 in
Loop Label Placement at Sideseam	Bottom edge to bottom of loop label, at the WL side seam	false	Full	1/8 in	7 in	7 in	7 in	7 in	7 in	7 in

Measured Size: M

POINT OF MEASURE	HOW TO MEASURE	CRITICAL	TYPE	TOLERANCE	EXPECTED	PPS - RCVD	VARIANCE	ADJUST BY +/-	REVISED SPEC	MEASUREMENT NOTES
Front Body Length	HPS to bottom edge	true	Full	1/2 in	28 in	28 1/4 in	1/4 in	0 in	28 in	
Back Body Length	CB neck seam to bottom edge	true	Full	1/2 in	27 in	27 1/4 in	1/4 in	0 in	27 in	
Shoulder Seam Forward	HPS to seam	false	Full	1/8 in	1/2 in	1/2 in	0 in	0 in	1/2 in	
Shoulder Slope	Shoulder point perpendicular to HPS	false	Full	1/4 in	2 in	2 in	0 in	0 in	2 in	
Front Neck Drop	HPS to neck seam	false	Full	1/8 in	4 in	4 1/4 in	1/4 in	1/4 in	4 1/4 in	Keep As Sampe
Back Neck Drop	HPS to neck seam	false	Full	1/8 in	1 in	1 in	0 in	0 in	1 in	
Back Neck Width	Seam to seam at back neck, at HPS point	false	Full	1/4 in	7 in	7 1/4 in	1/4 in	0 in	7 in	
Neck Trim Height	Neck Seam to trim edge (before folded)	false	Full	1/8 in	1 in	1 1/8 in	1/8 in	0 in	1 in	
Across Shoulder	Seam to seam	false	Half	1/4 in	20 in	20 in	0 in	0 in	20 in	
Across Front/Across Back Position from HPS		true	Full	0 in	7 in	7 in	0 in	0 in	7 in	
Across Front	Down from HPS, Seam to seam	false	Half	1/4 in	17 3/4 in	17 3/4 in	0 in	0 in	17 3/4 in	
Across Back	Down from HPS, Seam to Seam	false	Half	1/4 in	18 1/4 in	18 1/4 in	0 in	0 in	18 1/4 in	
Chest Width	1" Below armhole- edge to edge	true	Half	1/4 in	24 in	23 7/8 in	-1/8 in	0 in	24 in	
Bottom Opening Width- At Edge	At bottom edge	true	Half	1/4 in	24 in	23 1/2 in	-1/2 in	-1/2 in	23 1/2 in	Keep As Sample
Bottom Hem Height	Bottom edge to stitch line or trim seam	false	Full	1/8 in	1/2 in	1/2 in	0 in	0 in	1/2 in	
Sleeve Length from CB Neck	3-point measure from CB Neck to shoulder point to sleeve edge	true	Full	3/8 in	19 1/2 in	19 1/2 in	0 in	0 in	19 1/2 in	
Armhole Drop	Below HPS - measure perpendicular	false	Full	1/4 in	11 3/4 in	12 in	1/4 in	0 in	11 3/4 in	
Bicep Width	1" below armhole- edge to edge	false	Half	1/4 in	9 3/4 in	9 3/8 in	-3/8 in	0 in	9 3/4 in	Back to Spec
Sleeve Opening Width- At Edge	At edge	false	Half	1/4 in	8 1/2 in	8 1/2 in	0 in	0 in	8 1/2 in	
Sleeve Hem Height		false	Full	1/8 in	7/8 in	7/8 in	0 in	0 in	7/8 in	
CF Placket Width	Width of placket edge to edge	false	Full	1/8 in	1 1/2 in	1 3/8 in	-1/8 in	0 in	1 1/2 in	
CF Placket Length	CF neck drop to bottom of placket	true	Full	1/8 in	3 3/4 in	3 3/4 in	0 in	0 in	3 3/4 in	
1st Button Placement from CF Neck Edge to Button Center		false	Full	1/8 in	3/4 in	7/8 in	1/8 in	0 in	3/4 in	
Last Button Placement Up from Hem		false	Full	1/8 in	7/8 in	7/8 in	0 in	0 in	7/8 in	
Shirt Tail Height		true	Full	1/8 in	2 in	2 1/8 in	1/8 in	0 in	2 in	
CF Artwork Placement below CF Neckline	From CF Neck Seam to Top Edge of Artwork	false	Full	1/8 in	4 1/4 in	4 1/4 in	0 in	1/4 in	4 1/2 in	Follow Revised
Small Woven Label Placement Up from Hem Edge		false	Full	1/8 in	1 3/4 in	1 3/4 in	0 in	0 in	1 3/4 in	
Small Woven Label Placement in from Sideseam		false	Full	1/8 in	2 1/4 in	2 1/4 in	0 in	0 in	2 1/4 in	
Loop Label Placement at Sideseam	Bottom edge to bottom of loop label, at the WL side seam	false	Full	1/8 in	7 in	7 in	0 in	0 in	7 in	



PPS - Anastasiya Zolotova

CREATED ON SEP 17, 2025 6:49 PM  
PPS: SIZE:M, CREATED AT: 09-16-2025

SS26CT100 Mesh Practice Jersey  
**FITTING DATE:** 9/16/25  
**MODEL/ATTENDEES:** Jessica, Anthony, Cal, Jeni, Anastasiya, Hyeyoung, Sarah  
**STATUS:** PPS Approved to TOP

Fit Comments:

1. Keep front neck drop as sample at 4 1/4"

2. Keep bottom opening as sample at 23 1/2"

3. Back to spec on bicep, came in -3/8"

4. Follow revised artwork placement of 4 1/2" from neck seam to top edge of artwork.
1. Giữ nguyên số đo hạ cổ trước theo mẫu là 4 1/4".

2. Giữ nguyên số đo ngang lai theo mẫu là 23 1/2".

3. Đưa số đo ngang bắp tay về đúng tiêu chuẩn, mẫu đang bị nhỏ hơn 3/8".

4. Làm theo vị trí in đã được chỉnh sửa: từ đường may cổ xuống mép trên của hình in là 4 1/2".



Screen Shot 2025-09-17 at 12.30.08 PM.jpg