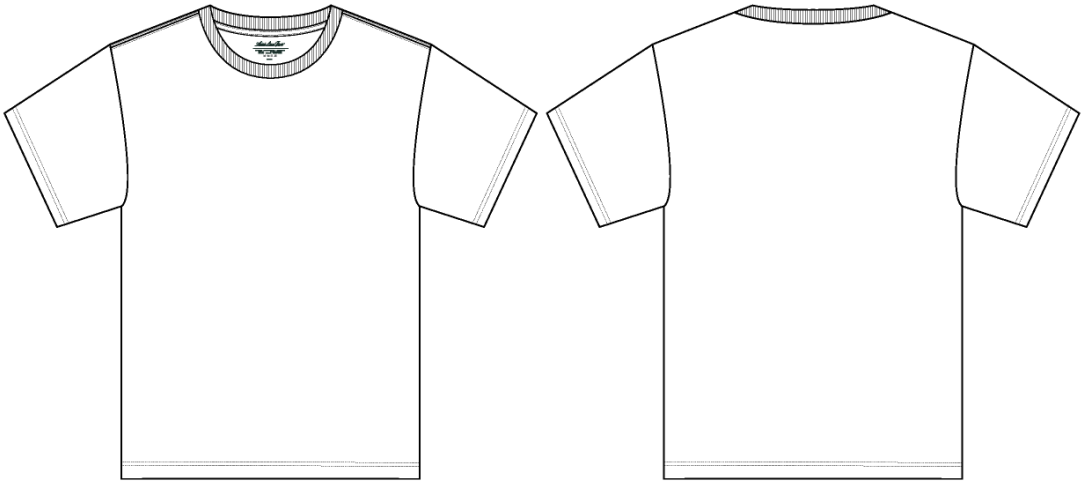
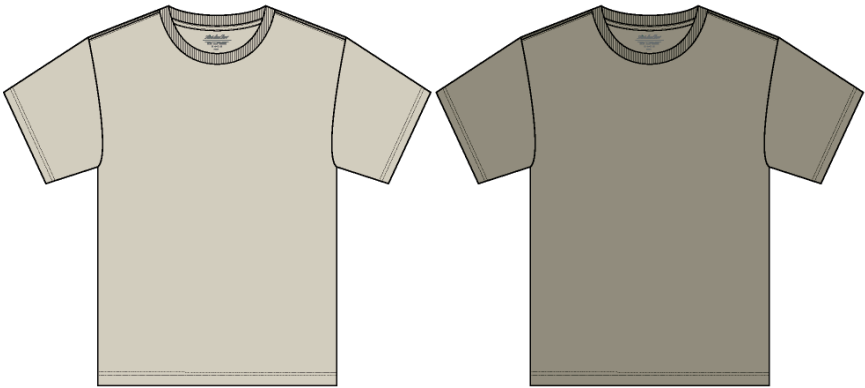


Name	Multi Color T-Shirt 3 Pack
Style No.	SS26CT090
Division	Mens
Category	Tees
Season	Spring/Summer
Year	2026
Size Scale	M -Sample size
	<div>XS S M L XL XXL</div>
Created by/Author	6/10/2025 Anastasiya Zolotova anastasiya.zolotova@aimeleondore.com

Multi Color T-Shirt 3 Pack



1_B&W (6)-1



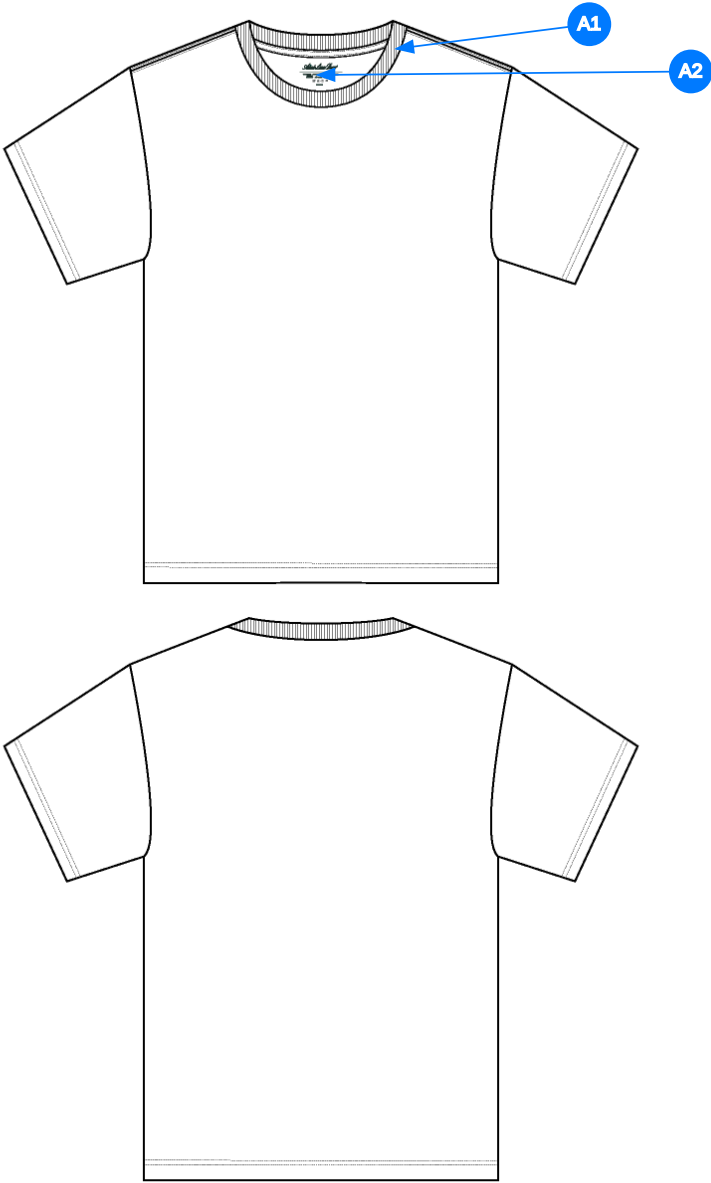
BONE WHITE

LAUREL OAK



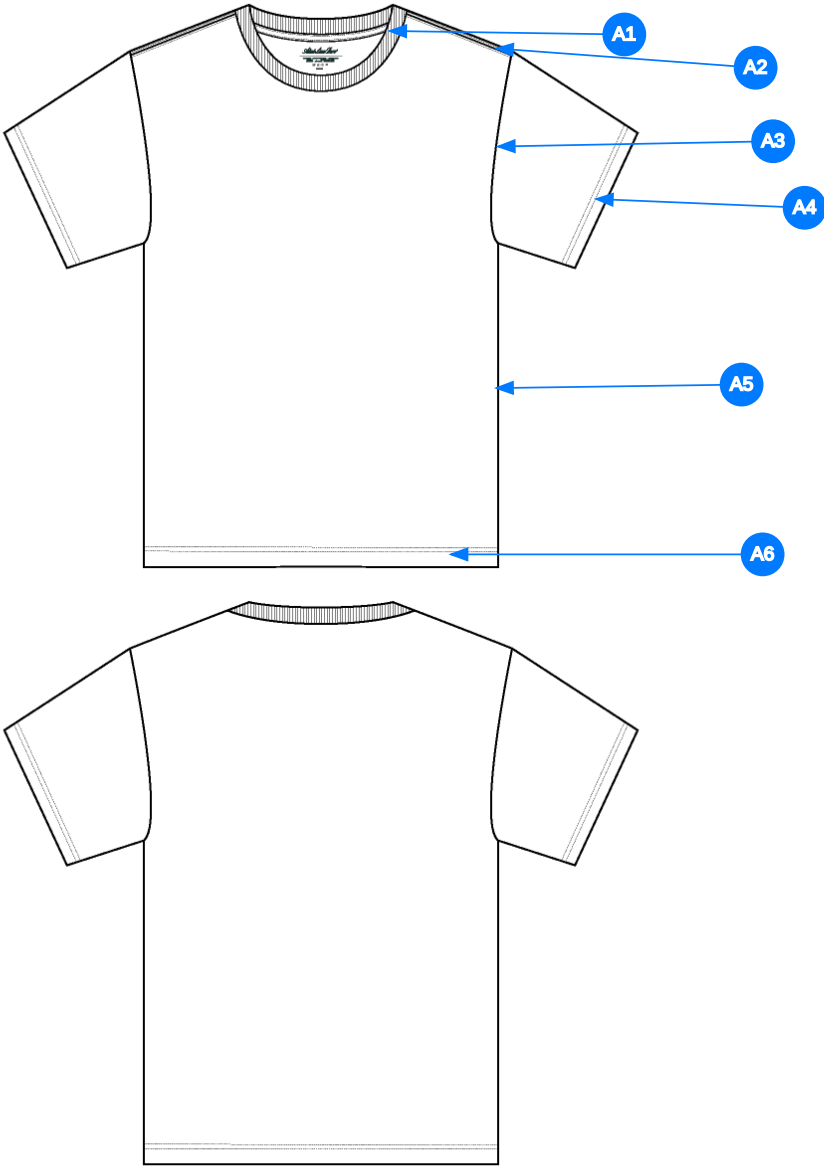
HOT FUDGE

2_CLR (4)-1



- Comments (2)
- A1 1X1 RIB SINGLE @ NECK TRIM - JERSEY TAPE @ CB NECK
 - A2 PRINTED MAIN LABEL @ INTERIOR NECK

3_Construction Details-1



Comments (6)

- A1** CLEAN SEAM FINISH @ NECK TRIM - EDGE STITCH @ JERSEY TAPE
- A2** 1/4" CHAINSTITCH STRADDLE @ SHOULDER SEAM
- A3** CLEAN SEAM FINISH @ ARMHOLE
- A4** 1/8" DN TS @ SLEEVE OPENING - TURN BACK W/ COVERLOCK STITCH
- A5** CLEAN SEAM FINISH @ SIDE SEAM
- A6** 1/8" DN TS @ BOTTOM HEM - TURN BACK W/ COVERLOCK STITCH

4_Stitching Details-1

Sample Size: M

POINT OF MEASURE	HOW TO MEASURE	CRITICAL	TYPE	TOLERANCE	M
Front Body Length	HPS to bottom edge	true	Full	1/2 in	29 in
Back Body Length	CB neck seam to bottom edge	true	Full	1/2 in	28 in
Shoulder Seam Forward	HPS to seam	false	Full	1/8 in	1/2 in
Shoulder Slope	Shoulder point perpendicular to HPS	false	Full	1/4 in	1 3/4 in
Front Neck Drop	HPS to neck seam	false	Full	1/8 in	4 1/4 in
Back Neck Drop	HPS to neck seam	false	Full	1/8 in	1 in
Back Neck Width	Seam to seam at back neck, at HPS point	false	Full	1/4 in	6 3/4 in
Neck Trim Height	Neck Seam to trim edge	false	Full	1/8 in	7/8 in
Minimum Neck Stretch		true	Half	0 in	11 1/2 in
Across Shoulder	Seam to seam	false	Half	1/4 in	18 in
Across Front/Across Back Position from HPS		true	Full	0 in	7 in
Across Front	Down from HPS, Seam to seam	false	Half	1/4 in	15 3/4 in
Across Back	Down from HPS, Seam to Seam	false	Half	1/4 in	16 in
Chest Width	1" Below armhole- edge to edge	true	Half	1/4 in	20 3/4 in
Bottom Opening Width- At Edge	At bottom edge	true	Half	1/4 in	20 3/4 in
Bottom Hem Height	Bottom edge to stitch line or trim seam	false	Full	1/8 in	3/4 in
Sleeve Length from CB Neck - Short	3-point measure from CB Neck to shoulder point to sleeve edge	true	Full	3/8 in	18 1/2 in
Armhole Drop	Below HPS - measure perpendicular	false	Full	1/4 in	10 3/4 in
Bicep Width	1" below armhole- edge to edge	false	Half	1/4 in	8 in
Sleeve Opening Width- At Edge	At edge	false	Half	1/4 in	7 1/8 in
Armhole Hem Height	Edge to seam- trim width	false	Full	1/8 in	3/4 in

Development Notes - Anastasiya Zolotova

CREATED ON JUN 10, 2025 3:33 AM

SS26CT090 Multi Color T-Shirt 3 Pack

Date: 6/10/25

Status: Direct to PPS

TD: Anastasiya

Fit: Follow fit of NOSCT007 Multi Color Packaged Tees