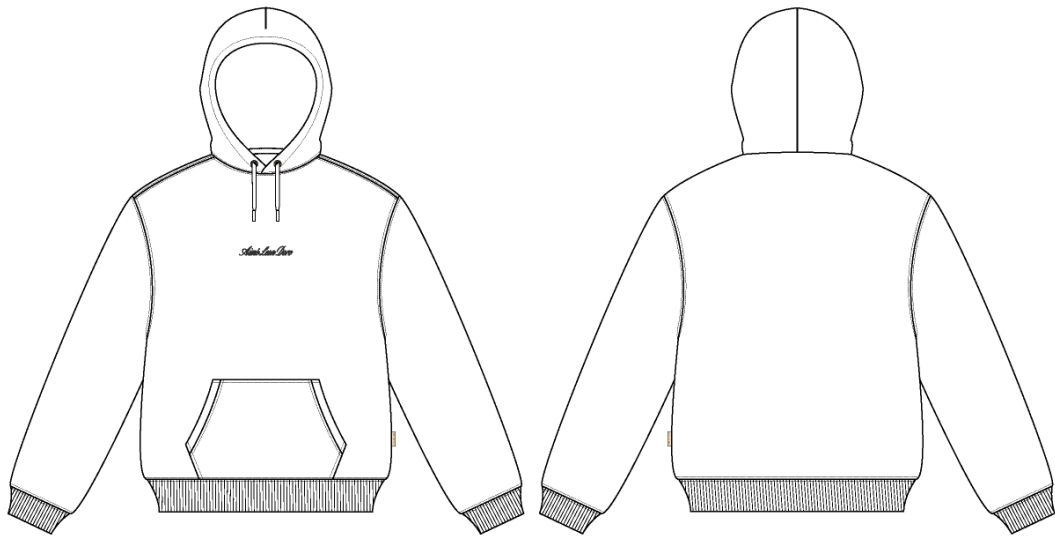


Embroidered Logo Hoodie

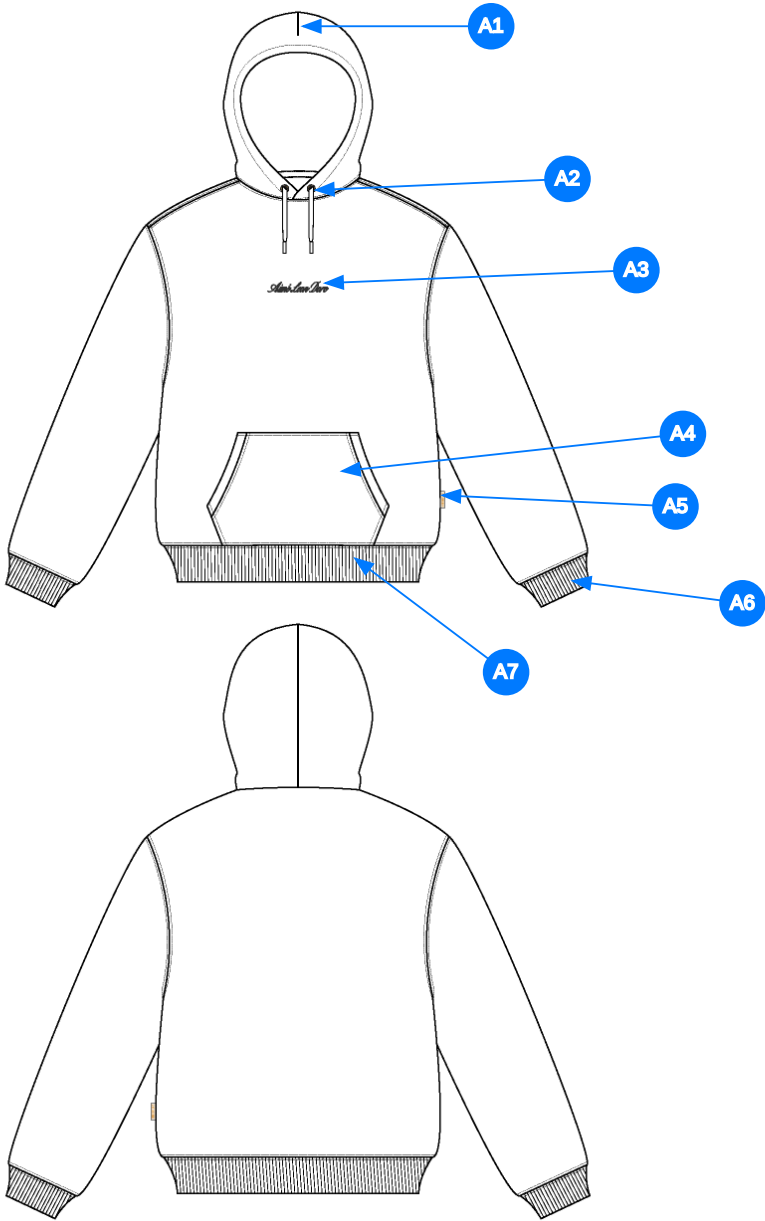
Name	Embroidered Logo Hoodie
Style No.	SS26CH006
Division	Mens
Category	Hoodies
Season	Spring/Summer
Year	2026
Size Scale	<div>M</div> -Sample size <div><div>XS</div><div>S</div><div>M</div><div>L</div><div>XL</div><div>XXL</div></div>
Style Status	Adopted
Factory	UN-AVAILABLE
Designer Name	Wes
TD Name	Anastasiya
Created by/Author	6/6/2025 Anastasiya Zolotova anastasiya.zolotova@aimeleondore.com



1_B&W-1



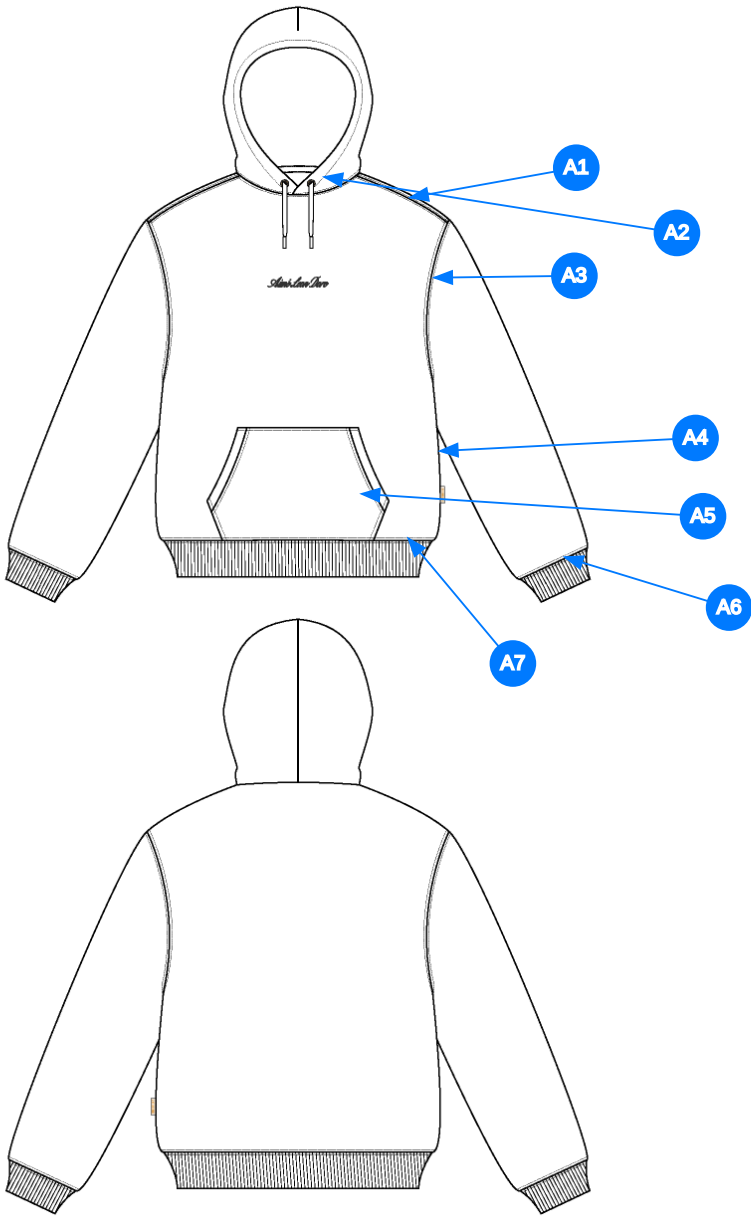
2_CLR-1



Comments (7)

- A1 DART @ HOOD
- A2 METAL EYELETS W/ DRAWCORD @ HOOD - FLAT BRAIDED DRAWCORDS W/ TURN BACK FINISH
- A3 ARTWORK @ CF CHEST - SEE FOLLOWING PAGE FOR ARTWORK DETAILS
- A4 KANGAROO POCKET @ FRONT BODY
- A5 ALD WOVEN LABEL @ SIDE SEAM
- A6 2X1 RIB DOUBLED @ SLEEVE CUFFS
- A7 2X1 RIB DOUBLED @ HEM

3_Construction Details-1



Comments (7)

- A1** STRADDLE STITCH @ SHOULDER SEAM
- A2** STRADDLE STITCH @ NECK
- A3** STRADDLE STITCH @ ARMHOLE
- A4** CLEAN SEAM FINISH @ SIDE SEAM
- A5** 1/8" SN TS @ POCKET - APPLIES TO TOP AND BOTTOM EDGES - 1/4" DN TS @ OPENINGS
- A6** STRADDLE STITCH @ SLEEVE CUFF
- A7** STRADDLE STITCH @ BOTTOM HEM

4_Stitching Details-1

Sample Size: M

POINT OF MEASURE	HOW TO MEASURE	CRITICAL	TYPE	TOLERANCE	M
Front Body Length	HPS to bottom edge	true	Full	1/2 in	27 in
Back Body Length	CB neck seam to bottom edge	true	Full	1/2 in	26 1/4 in
Shoulder Seam Forward	HPS to seam	false	Full	1/8 in	1/2 in
Shoulder Slope	Shoulder point perpendicular to HPS	false	Full	1/4 in	2 1/2 in
Front Neck Drop	HPS to neck seam	false	Full	1/8 in	3 1/2 in
Back Neck Drop	HPS to neck seam	false	Full	1/8 in	3/4 in
Back Neck Width	Seam to seam at back neck, at HPS point	false	Full	1/4 in	9 in
Minimum Neck Stretch		true	Half	0 in	11 1/2 in
Across Shoulder Width- Seam to seam	Seam to Seam	false	Full	1/4 in	22 1/2 in
Across Front/Across Back Position from HPS		true	Full	0 in	7 in
Across Front	Down from HPS, Seam to seam	false	Half	1/4 in	20 1/2 in
Across Back	Down from HPS, Seam to Seam	false	Half	1/4 in	21 in
Chest Width	1" Below armhole- edge to edge	true	Half	1/4 in	22 1/2 in
Bottom Opening 2" Above Rib Knit Seam	At bottom edge	true	Half	1/4 in	20 in
Bottom Opening Width- At Seam	Straight with seam relaxed	true	Half	1/4 in	19 1/2 in
Bottom Opening Width- At Edge	At bottom edge	true	Half	1/4 in	17 1/2 in
Bottom Hem Height	Bottom edge to stitch line or trim seam	false	Full	1/8 in	2 1/2 in
Sleeve Length from CB Neck	3-point measure from CB Neck to shoulder point to sleeve edge	true	Full	1/2 in	35 in
Armhole Drop	Below HPS - measure perpendicular	false	Full	1/4 in	13 in
Bicep Width	1" below armhole- edge to edge	false	Half	1/4 in	10 1/4 in
Forearm Width	9" up from sleeve cuff edge	false	Half	1/4 in	7 1/2 in
Sleeve Opening Width 1" Above Rib Knit Seam	At edge	false	Half	1/4 in	5 1/4 in
Sleeve Opening Width- At Seam	Width at Seam	false	Half	1/4 in	4 3/4 in
Sleeve Opening Width- At Edge	At edge	false	Half	1/4 in	3 3/4 in
Sleeve Cuff Height	Cuff edge to seam	false	Full	1/8 in	2 1/2 in
Hood Height at CF	From neck seam to top edge	false	Half	3/8 in	15 in
Hood Height at HPS		false	Full	1/8 in	13 1/2 in
Hood Width 6" Below Top Edge	Straight from CF edge to CB seam- 6" down	false	Half	3/8 in	11 in
Exposed Drawcord Length		false	Full	1/2 in	10 in
Hood Tunnel Height		false	Full	1/8 in	1 in
Hood Overlap Width at CF Neck		false	Full	1/8 in	1 in
Drawcord Opening Placement up from Neck Seam		false	Full	1/8 in	1 1/2 in
Kangaroo Pocket Height At Center	Height at center	false	Full	1/4 in	8 1/2 in
Kangaroo Pocket Height at Sides		false	Full	1/8 in	3 in
Kangaroo Pocket Width at Top Edge	Width at top edge	false	Full	1/4 in	9 1/2 in
Kangaroo Pocket Width at Bottom	Width at Bottom Edge - Extended	false	Full	1/4 in	12 3/4 in
Kangaroo Pocket Opening		false	Full	1/8 in	6 1/4 in
Kangaroo Pocket Hem Height	Edge to stitch line	false	Full	1/8 in	3/4 in
CF Artwork Placement below CF Neckline	From CF Neck Seam to Top Edge of Artwork	false	Full	1/8 in	3 3/4 in
Loop Label Placement at Sideseam	Bottom edge to bottom of loop label, at the WL side seam	false	Full	1/8 in	7 in

Development Notes - Anastasiya Zolotova

CREATED ON JUN 6, 2025 4:31 AM

SS26CH006 Embroidered Logo Hoodie
Date: 6/6/25
Status: Direct to PPS
TD: Anastasiya

Please follow FB12 fit block(NOSCH002/001)