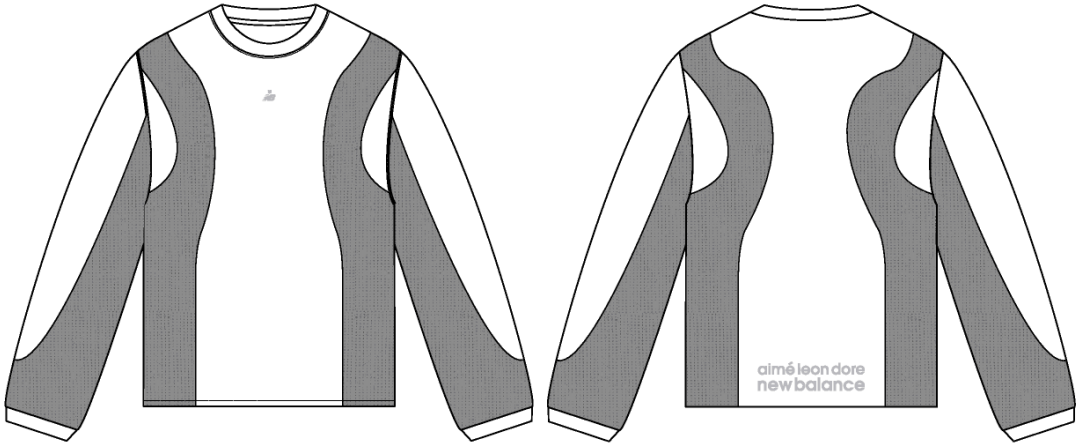


NB LS Top

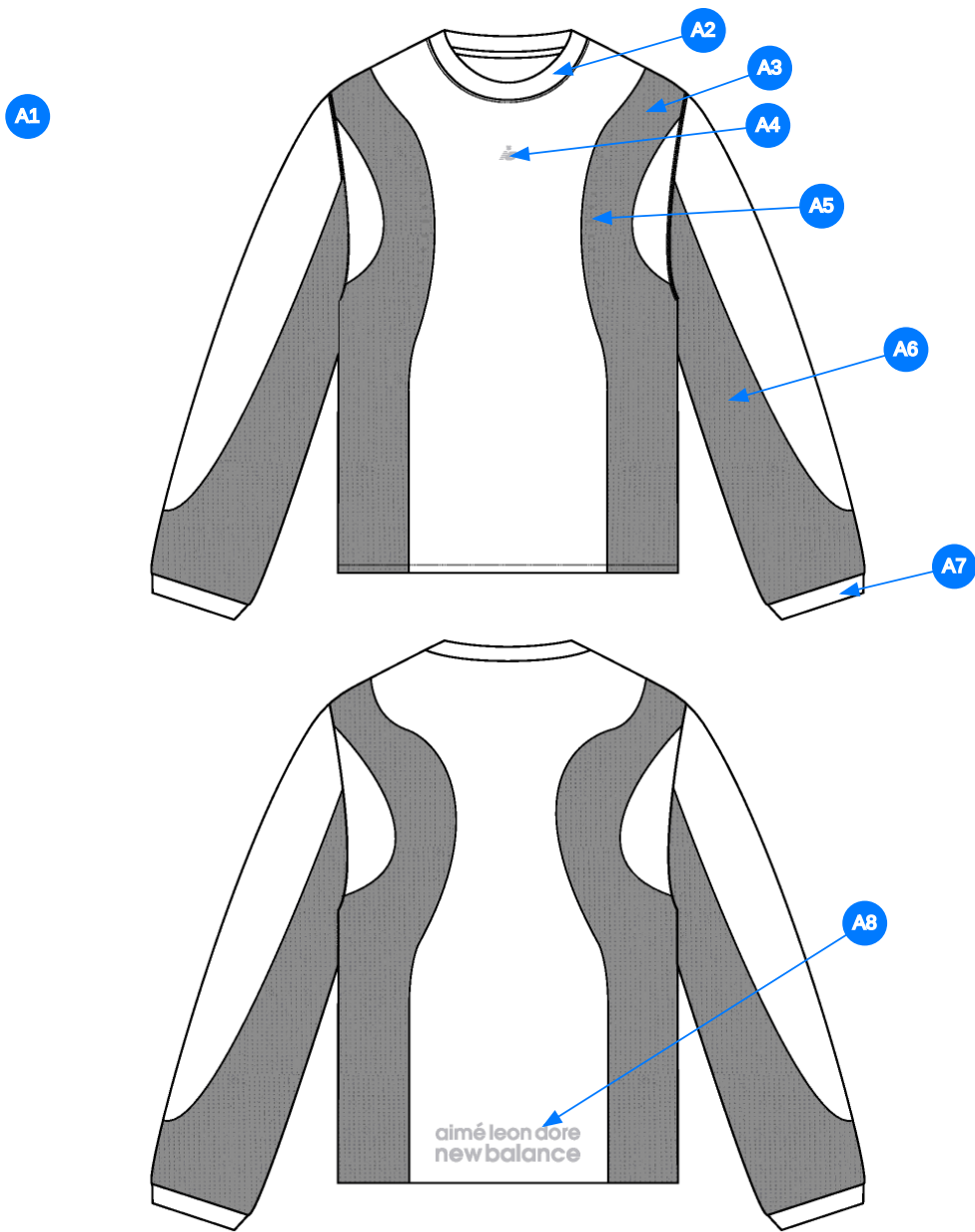
Name	NB LS Top
Style No.	NB26CT001
Division	Mens
Category	Tees
Season	Spring/Summer
Year	2026
Size Scale	<div>M</div> -Sample size <div><div>XS</div><div>S</div><div>M</div><div>L</div><div>XL</div><div>XXL</div></div>
Style Status	Development
Factory	UN-AVAILABLE
Designer Name	Wes
TD Name	Anastasiya
Created by/Author	4/17/2025 Jeni Fitzgerald jeni.fitzgerald@aimeleonore.com



1_B&W-1



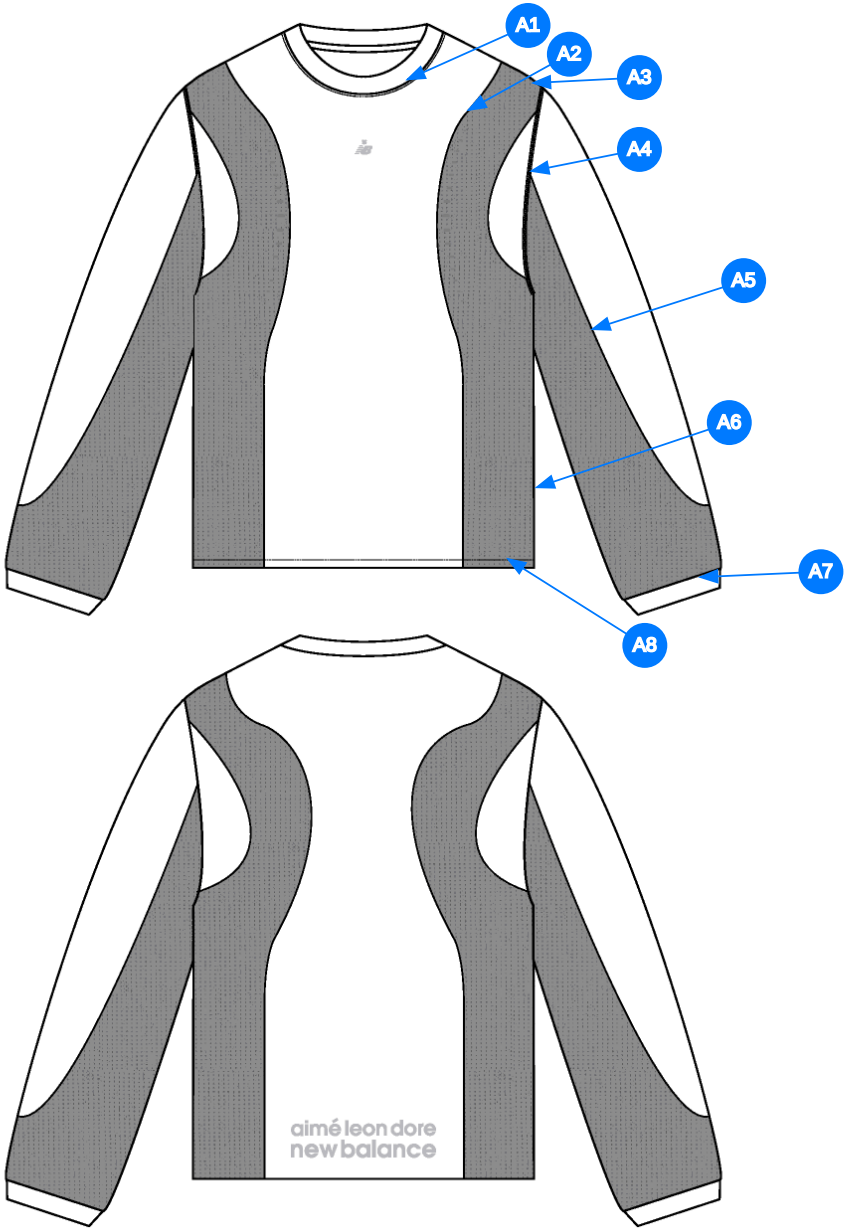
2_CLR-1



Comments (8)

- A1** FIT: NB RC56 LS TOP (NB25CT002)
- A2** SELF FABRIC @ NECK TRIM - POLY TAPE ALONG BACK NECK
- A3** SET IN PANEL @ BODY
- A4** ARTWORK @ CF CHEST - SEE ADDITIONAL FILE FOR ARTWORK DETAILS
- A5** LASER PERFORATION @ PANEL - SEE ADDITIONAL FILE FOR PERFORATION ARTWORK
- A6** SET IN PANEL @ SLEEVES
- A7** SELF FABRIC @ SLEEVE CUFFS
- A8** ARTWORK @ CB - SEE ADDITIONAL FILE FOR ARTWORK DETAILS

3_Construction Details-1



Comments (8)

- A1 1/8" SN TS @ NECK
- A2 CLEAN SEAM FINISH @ BODY PANEL
- A3 COVERLOCK STITCHING @ SHOULDER
- A4 COVERLOCK STITCHING @ ARMHOLE
- A5 CLEAN SEAM FINISH @ SLEEVE PANEL
- A6 COVERLOCK STITCHING @ SIDE SEAM
- A7 CLEAN SEAM FINISH @ SLEEVE CUFF
- A8 1/4" DN TS @ BOTTOM HEM - TURNBACK W/ COVERLOCK FINISH

4_Stitching Details-1

Sample Size: M

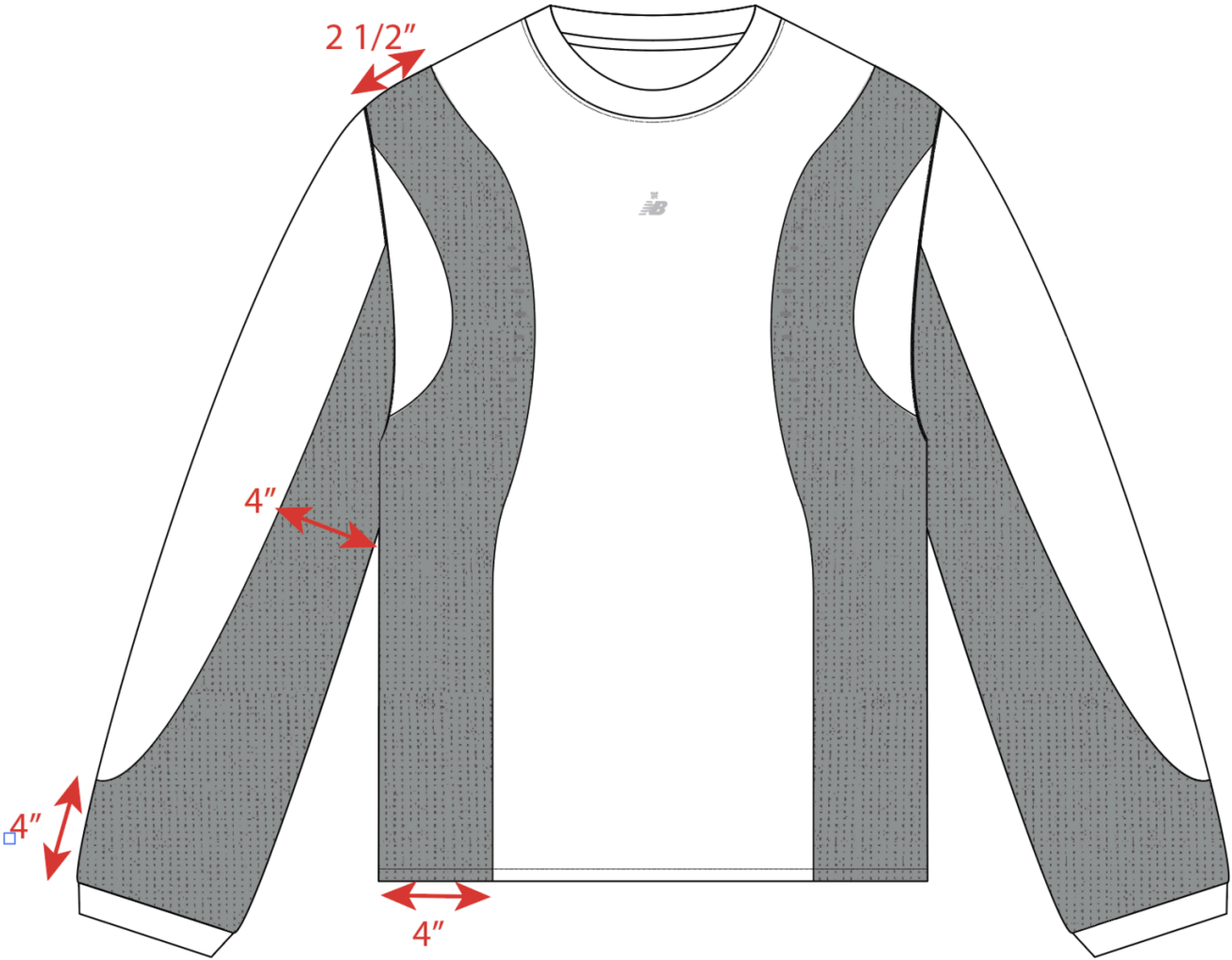
POINT OF MEASURE	CODE	HOW TO MEASURE	CRITICAL	TYPE	TOLERANCE	M
Front Body Length	S&K001	HPS to bottom edge	true	Full	1/2 in	27 3/4 in
Back Body Length	S&K002	CB neck seam to bottom edge	true	Full	1/2 in	27 in
Shoulder Seam Forward	S&K007	HPS to seam	false	Full	1/8 in	3/4 in
Shoulder Slope	S&K008	Shoulder point perpendicular to HPS	false	Full	1/4 in	2 in
Front Neck Drop	S&K004	HPS to neck seam	false	Full	1/8 in	4 1/4 in
Back Neck Drop	WV005	FROM HPS LEVEL STRAIGHT DOWN TO CB NECK SEAM	true	Full	1/8 in	3/4 in
Back Neck Width	S&K006	Seam to seam at back neck, at HPS point	false	Full	1/4 in	7 1/2 in
Neck Trim Height	S&K254	Neck Seam to trim edge (before folded)	false	Full	1/8 in	3/4 in
Across Shoulder Width- Seam to seam	S&K259	Seam to Seam	false	Full	3/8 in	18 in
Across Front/Across Back Position from HPS	eos7YR		true	Full	0 in	7 in
Across Front	S&K010	7" dwn from HPS, Seam to seam	false	Half	3/8 in	15 3/4 in
Across Back	S&K011	7" dwn from HPS, Seam to Seam	false	Half	3/8 in	16 1/4 in
Chest Width	S&K012	1" Below armhole- edge to edge	true	Half	1/2 in	22 1/4 in
Bottom Opening Width- At Edge	S&K013	At bottom edge	true	Half	1/2 in	22 1/4 in
Bottom Hem Height	S&K014	Bottom edge to stitch line or trim seam	false	Full	1/8 in	3/4 in
Sleeve Length from CB Neck	S&K032	3-point measure from CB Neck to shoulder point to sleeve edge	true	Full	1/2 in	34 1/4 in
Armhole Drop	S&K016	Below HPS - measure perpendicular	false	Full	1/4 in	11 1/2 in
Bicep Width	S&K017	1" below armhole- edge to edge	false	Half	1/4 in	8 3/4 in
Forearm Width	S&K345	9" up from sleeve cuff edge	false	Half	1/4 in	6 3/4 in
Sleeve Opening Width 1" Above Cuff Seam	S&K		true	Half	1/4 in	5 1/4 in
Sleeve Opening Width- At Edge	S&K073	At edge	false	Half	1/4 in	4 1/4 in
Cuff Height	S&K036	Cuff edge to seam	false	Full	1/8 in	1 1/2 in
CF Artwork Placement below CF Neckline	S&K112	From CF Neck Seam to Top Edge of Artwork	false	Full	1/8 in	3 in
CB Artwork Placement Above Hem Edge	S&K109		false	Full	1/8 in	1 1/2 in

Development Notes - Anastasiya Zolotova

CREATED ON APR 16, 2025 7:07 PM

NB26CT001 NB LS Top
Date: 4/16/25
Status: Requesting 1st Proto
TD: Anastasiya

Fit: Please follow reference pattern to create 1st proto w/below changes
-Remove flange
-Add paneling at sleeve and body following sketch and below image



Screen Shot 2025-04-16 at 10.50.34 PM.jpg

COMPONENT		QTY	1.  PROTO
FABRIC			
1	IN DEV CODE: TBD Placement: BODY, NECK TRIM, SLEEVE CUFFS Notes: FOLLOW REFERENCE QUALITY: 190 GSM 85% POLYESTER 15% ELASTANE		- IN DEV Price: 0.00
2	IN DEV CODE: TBD Placement: @ BACK NECK Notes: POLY NECK TAPE		- IN DEV Price: 0.00
3	IN DEV CODE: TBD Placement: SET IN PANELS AT BODY AND SLEEVES Notes: FOLLOW REFERENCE QUALITY: 180 GSM 87% NYLON 13% ELASTANE		- IN DEV Price: 0.00
4	ARTWORK CODE: AS CORRESPONDING FILE Placement: CF CHEST Notes: FOLLOW ARTWORK FILE AND POM Supplier: Factory Sourced		- ARTWORK Price: 0.00
5	ARTWORK CODE: AS CORRESPONDING FILE Placement: CB BODY Notes: FOLLOW ARTWORK FILE AND POM Supplier: Factory Sourced		- ARTWORK Price: 0.00
6	ARTWORK CODE: AS CORRESPONDING FILE Placement: SET IN PANELS AT FRONT BODY Notes: LASER PERFORATION, FOLLOW ARTWORK FILE AND POM Supplier: Factory Sourced		- ARTWORK Price: 0.00
LABEL AND TRIM PACKAGE			
Components 6			Total 0.00