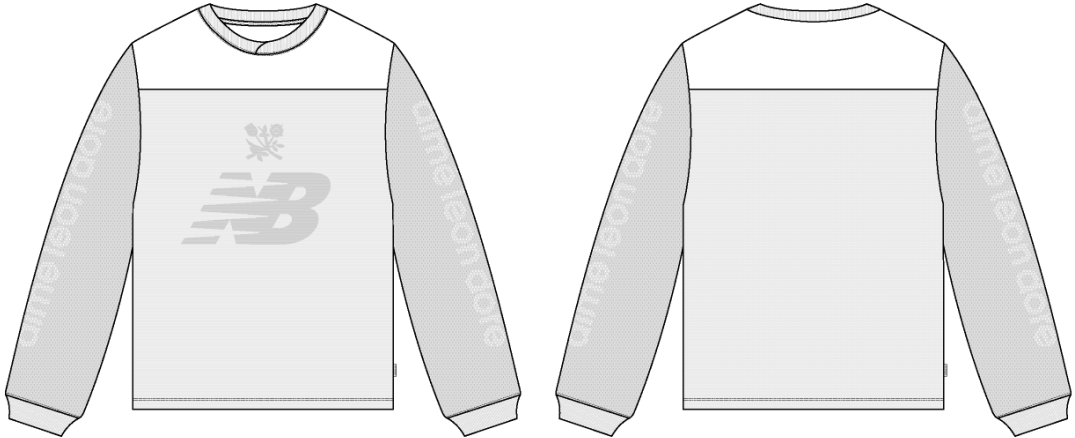


NB Moto Jersey

Name	NB Moto Jersey
Style No.	NB26CT002
Division	Mens
Category	Tees
Season	Spring/Summer
Year	2026
Size Scale	<div>M</div> -Sample size <div><div>XS</div><div>S</div><div>M</div><div>L</div><div>XL</div><div>XXL</div></div>
Style Status	Development
Factory	UN-AVAILABLE
Designer Name	Wes
TD Name	Anastasiya
Created by/Author	4/17/2025 Jeni Fitzgerald jeni.fitzgerald@aimeleondore.com



1\_B&W-1



2\_CLR-1

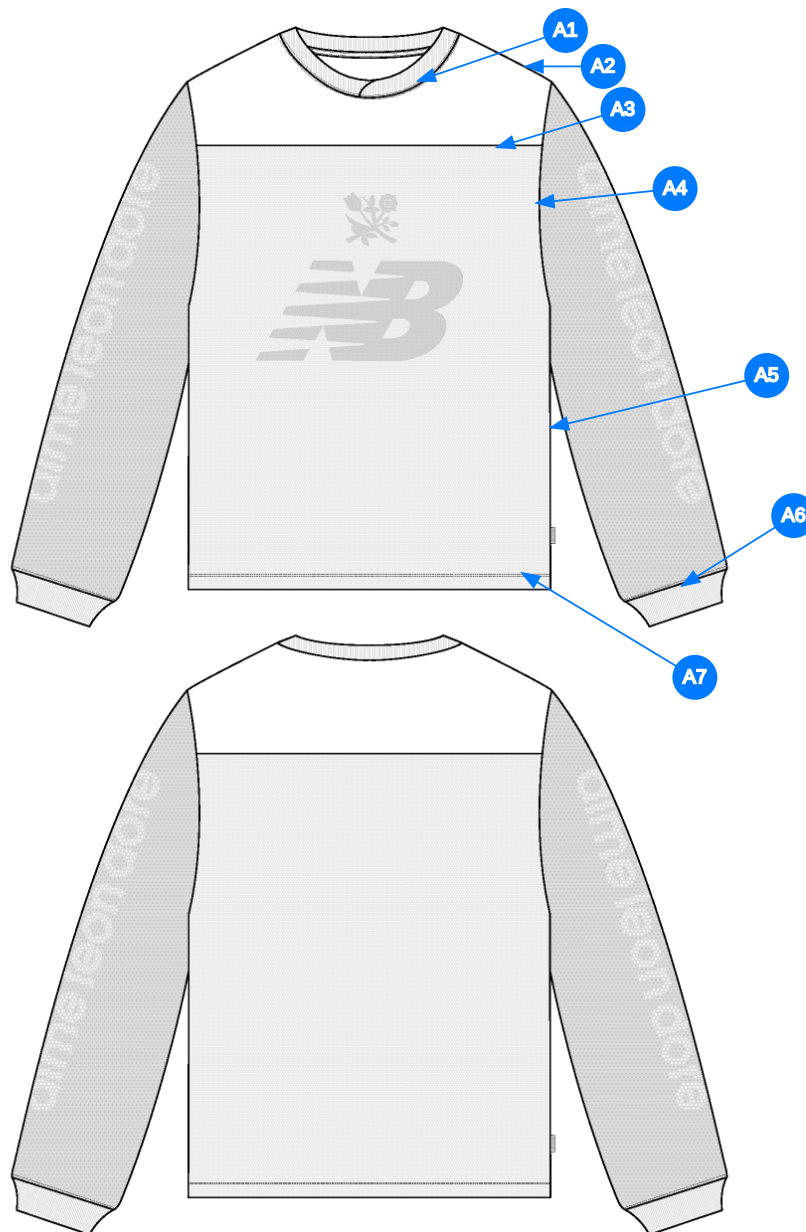


3\_Construction Details-1

Comments (8)

- A1** FIT: NB RC56 TOP (NB25CT002)
- A2** SELF FABRIC @ COLLAR - OVERLAP @ CF (SS25CT020) - POLY TAPE @ CB NECK
- A3** YOKE @ CF CHEST
- A4** MESH SEWN INTO SEAMS @ BODY & SLEEVES - SEE ATTACHED FOR EXECUTION REFERENCE
- A5** ARTWORK PRINTED @ CF CHEST (BASE BODY QUALITY) - SEE ATTACHED FILE FOR ARTWORK DETAILS
- A6** ARTWORK PRINTED @ SLEEVE (BASE BODY QUALITY)
- A7** ALD WOVEN LABEL @ SIDE SEAM
- A8** 1X1 RIB DOUBLED @ SLEEVE CUFF

1. Fit tham khảo NB25CT002
2. Cổ bằng vải chính - cấu trúc chồng lên nhau tại giữa trước - dây tape viền cổ sau
3. Đô tại giữa ngực
4. vải lưới đắp tại thân và tay - xem hình tham khảo
5. hình in tại giữa ngực (in trên nền vải chính)
6. hình in tại tay (in trên nền vải chính)
7. nhãn cờ tại sườn ngoài
8. rib 1x1 tại lai tay



4\_Stitching Details-1

Comments (7)

- A1** 1/4" SN TS @ NECK - COVERLOCK STITCH @ INTERIOR NECK
- A2** CLEAN SEAM @ SHOULDER
- A3** CLEAN SEAM @ CF YOKE
- A4** CLEAN SEAM @ ARMHOLE
- A5** CLEAN SEAM @ SIDE SEAM
- A6** STRADDLE STITCH @ SLEEVE CUFF
- A7** 1/4" DN TS @ BOTTOM HEM - TURNBACK W/ COVERLOCK STITCH

1. điều 1 kim 1/4" tại cổ - vắt sổ bên trong cổ
2. may sạch tại đường may vai
3. may sạch tại đô giữa trước
4. may sạch tại nách
5. may sạch tại đường may sườn
6. điều rế tại lai tay
7. điều 2 kim 1/4" tại lai áo - gấp đôi vắt sổ mặt trong

Sample Size: M

POINT OF MEASURE	CODE	HOW TO MEASURE	CRITICAL	TYPE	TOLERANCE	M
Front Body Length	S&K001	HPS to bottom edge	true	Full	1/2 in	27 3/4 in
Back Body Length	S&K002	CB neck seam to bottom edge	true	Full	1/2 in	27 in
Shoulder Seam Forward	S&K007	HPS to seam	false	Full	1/8 in	3/4 in
Shoulder Slope	S&K008	Shoulder point perpendicular to HPS	false	Full	1/4 in	2 in
Front Neck Drop	S&K004	HPS to neck seam	false	Full	1/8 in	4 1/4 in
Back Neck Drop	WV005	FROM HPS LEVEL STRAIGHT DOWN TO CB NECK SEAM	true	Full	1/8 in	3/4 in
Back Neck Width	S&K006	Seam to seam at back neck, at HPS point	false	Full	1/4 in	7 1/2 in
Neck Trim Height	S&K254	Neck Seam to trim edge (before folded)	false	Full	1/8 in	3/4 in
Across Shoulder Width- Seam to seam	S&K259	Seam to Seam	false	Full	3/8 in	18 in
Across Front/Across Back Position from HPS	eos7YR		true	Full	0 in	7 in
Across Front	S&K010	7" dwn from HPS, Seam to seam	false	Half	3/8 in	15 3/4 in
Across Back	S&K011	7" dwn from HPS, Seam to Seam	false	Half	3/8 in	16 1/4 in
Chest Width	S&K012	1" Below armhole- edge to edge	true	Half	1/2 in	22 1/4 in
Bottom Opening Width- At Edge	S&K013	At bottom edge	true	Half	1/2 in	22 1/4 in
Bottom Hem Height	S&K014	Bottom edge to stitch line or trim seam	false	Full	1/8 in	3/4 in
Sleeve Length from CB Neck	S&K032	3-point measure from CB Neck to shoulder point to sleeve edge	true	Full	1/2 in	34 1/4 in
Armhole Drop	S&K016	Below HPS - measure perpendicular	false	Full	1/4 in	11 1/2 in
Bicep Width	S&K017	1" below armhole- edge to edge	false	Half	1/4 in	8 3/4 in
Forearm Width	S&K345	9" up from sleeve cuff edge	false	Half	1/4 in	6 3/4 in
Sleeve Opening Width 1" Above Cuff Seam	S&K		true	Half	1/4 in	5 1/4 in
Sleeve Opening Width- At Edge	S&K073	At edge	false	Half	1/4 in	4 1/4 in
Cuff Height	S&K036	Cuff edge to seam	false	Full	1/8 in	1 1/2 in
Front/Back Yoke Height	S&K033	HPS to yoke seam	false	Full	1/8 in	6 1/4 in
CF Artwork Placement from Yoke Seam	PEnvmg		true	Full	1/8 in	1 3/4 in
Sleeve Artwork Placement - From Shoulder Seam	RSVfF0		true	Full	1/8 in	2 in

## Development Notes - Anastasiya Zolotova

CREATED ON APR 16, 2025 7:16 PM

NB26CT002 NB Moto Jersey

Date: 4/16/25

Status: Requesting 1st Proto

TD: Anastasiya

Fit: Please follow reference pattern to create 1st proto w/below changes

-Remove flange

Body Construction:

-Sleeve has 2 layers, self and mesh on top.

-Front and back body has 2 layers, self and mesh on top. Please ensure to give ease at top mesh layers.

-Yoke at front and back is only self single layers.

**fit: tham khảo rập làm mẫu proto và thay đổi bên dưới**



**- bỏ flange**

**cấu trúc thân áo:**

**- tay 2 lớp, 1 lớp vải chính và 1 lớp vải lưới đắp trên**

**- thân trước và thân sau 2 lớp, 1 lớp vải chính và 1 lớp vải lưới đắp trên. Đảm bảo tạo độ thoải mái tại lớp vải mesh**

**- đô trước và đô sau chỉ 1 lớp vải chính**

COMPONENT		QTY	1.  PROTO
FABRIC			
1	<b>IN DEV</b> CODE: TBD Placement: BASE, NECK TRIM Notes: FOLLOW REFERENCE QUALITY: 190 GSM 85% POLYESTER 15% ELASTANE		- IN DEV Price: 0.00
2	<b>IN DEV</b> CODE: TBD Placement: @ BACK NECK Notes: POLY NECK TAPE		- IN DEV Price: 0.00
3	<b>IN DEV</b> CODE: TBD Placement: MESH OVERLAY @ BODY AND SLEEVES (NO MESH AT FRONT AND BACK YOKE) Notes: FOLLOW REFERENCE QUALITY: 112 GSM 72% NYLON 28% ELASTANE		- IN DEV Price: 0.00
4	<b>IN DEV</b> CODE: TBD Placement: SLEEVE CUFFS Notes: 1X1 RIB TO MATCH BASE BODY QUALITY		- IN DEV Price: 0.00
5	<b>ARTWORK</b> CODE: AS CORRESPONDING FILE Placement: CF CHEST, BASE BODY QUALITY Notes: FOLLOW ARTWORK FILE AND POM Supplier: Factory Sourced		- ARTWORK Price: 0.00
6	<b>ARTWORK</b> CODE: AS CORRESPONDING FILE Placement: SLEEVES, BASE QUALTY Notes: FOLLOW ARTWORK FILE AND POM Supplier: Factory Sourced		- ARTWORK Price: 0.00
LABEL AND TRIM PACKAGE			
7	<b>ALD Woven Loop Label</b> CODE: ALD-ML02 Placement: WL SIDE SEAM Notes: FOLLOW POM Supplier: Colonial		-  Parmesan Base / Gold Text Price: 0.00
Components 7			Total 0.00