



NB Zip Hoodie

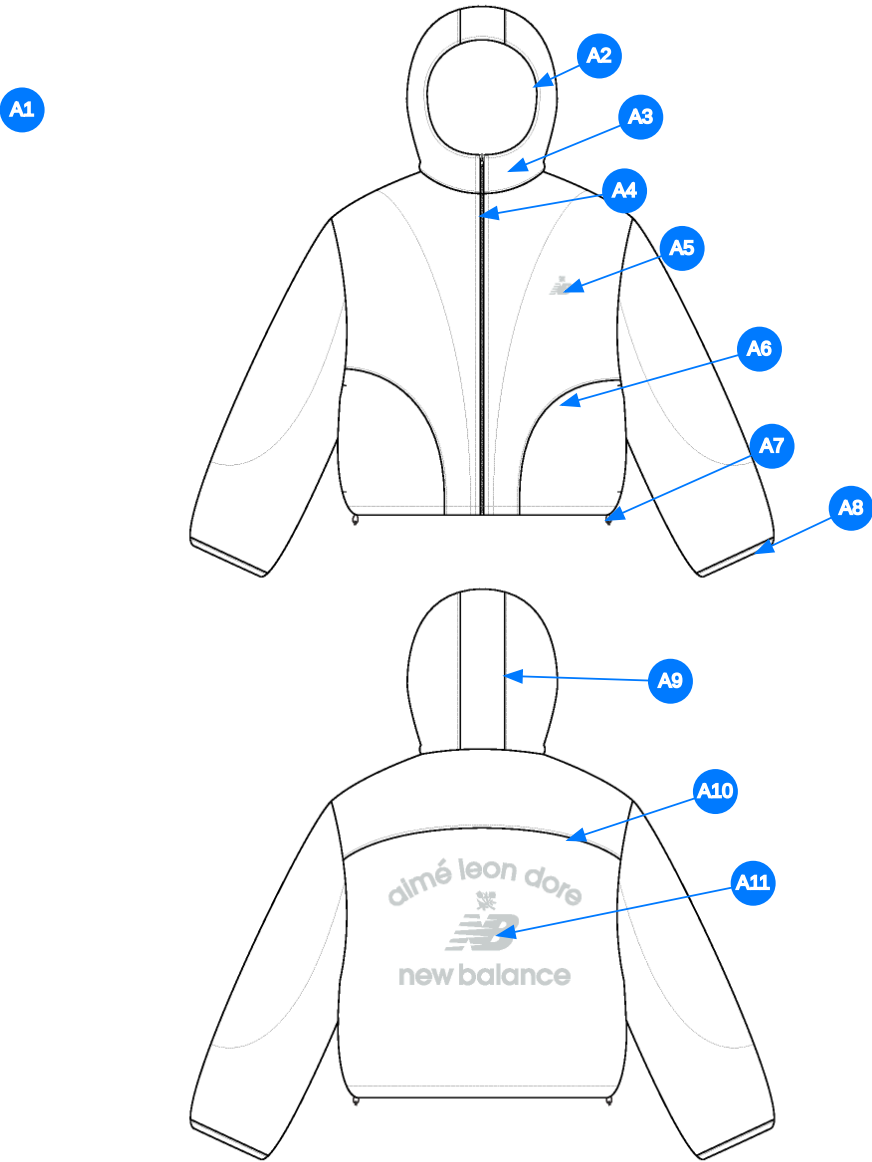
Name	NB Zip Hoodie
Style No.	NB26CH000
Division	Mens
Category	Hoodies
Season	Spring/Summer
Year	2026
Size Scale	<div>M</div> -Sample size <div><div>XS</div><div>S</div><div>M</div><div>L</div><div>XL</div><div>XXL</div></div>
Style Status	Adopted
Factory	UN-AVAILABLE
Designer Name	Wes
TD Name	Anastasiya
Created by/Author	1/8/2026 Anastasiya Zolotova anastasiya.zolotova@aimeleonore.com



1_B&W-1



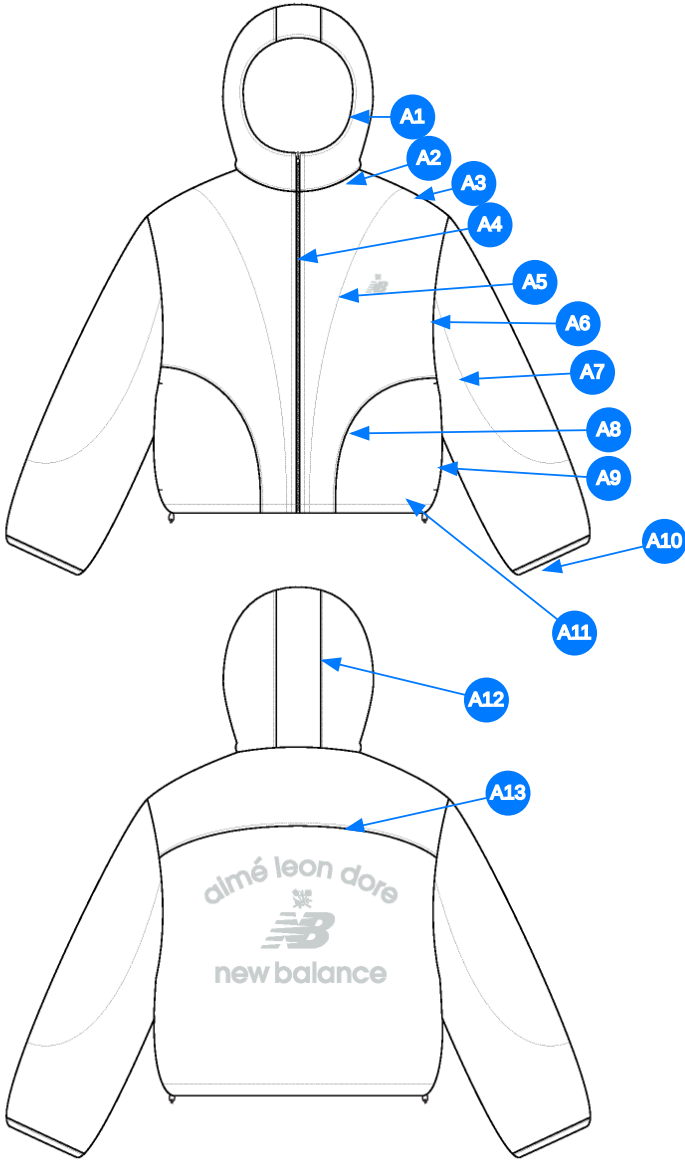
2_CLR-1



Comments (11)

- A1** FIT: SEE ATTACHED REFERENCE FOR FIT
- A2** SELF TURNBACK @ HOOD
- A3** INTERIOR BUNGEE CORD CLOSURE @ HOOD - SEE ADDITIONAL FILE FOR BUNGEE REFERENCE
- A4** ZIPPER CLOSURE @ CF CHEST
- A5** HEAT TRANSFER ARTWORK @ WL CHEST - SEE ADDITIONAL FILE FOR ARTWORK DETAILS
- A6** POCKET @ SIDE SEAM - KNUCKLE SIDE SELF, PALM SIDE SELF - BARTACK @ TOP AND BOTTOM OPENING
- A7** BUNGEE CORD CLOSURE @ BOTTOM HEM - SEE ADDITIONAL FILE FOR BUNGEE REFERENCE
- A8** SELF BINDING @ SLEEVE CUFF - FLAT ELASTIC INSERT
- A9** 3 PIECE HOOD WITH SEAMS @ HOOD
- A10** YOKE @ CB
- A11** HEAT TRANSFER ARTWORK @ CB - SEE ADDITIONAL PAGE FOR ARTWORK DETAILS

3_Construction Details-1



Comments (13)

- A1 SN TURNBACK @ HOOD OPENING
- A2 DTM SN TS @ NECK
- A3 CLEAN SEAM @ SHOULDER SEAM
- A4 DTM SN TS @ ZIPPER CLOSURE
- A5 DTM STITCHING @ BODY
- A6 CLEAN SEAM @ ARMHOLE
- A7 DTM STITCHING @ SLEEVE
- A8 DTM SN TS @ POCKET
- A9 CLEAN SEAM @ POCKET ENTRY
- A10 SN TS @ SLEEVE CUFF
- A11 1/4" SN TS @ BOTTOM HEM
- A12 DTM SN TS @ HOOD SEAMS
- A13 DTM SN TS @ BACK YOKE

4_Stitching Details-1

Sample Size: M

POINT OF MEASURE	HOW TO MEASURE	CRITICAL	TYPE	TOLERANCE	XS	S	M	L	XL	XXL
Front Body Length	HPS to bottom edge	true	Full	1/2 in	-7/8 in	-7/8 in	26 1/4 in	7/8 in	7/8 in	7/8 in
Back Body Length	CB neck seam to bottom edge	true	Full	1/2 in	-7/8 in	-7/8 in	25 1/2 in	7/8 in	7/8 in	7/8 in
CF Zipper Length	From neck to bottom edge	false	Full	1/4 in	-3/4 in	-3/4 in	26 1/2 in	3/4 in	3/4 in	3/4 in
Front Neck Drop	HPS to neck seam	false	Full	1/8 in	-1/8 in	-1/8 in	4 in	1/8 in	1/8 in	1/8 in
Back Neck Drop	HPS to neck seam	false	Full	1/8 in	0 in	0 in	3/4 in	0 in	0 in	0 in
Back Neck Width	Seam to seam at back neck, at HPS point	false	Full	1/4 in	-1/4 in	-1/4 in	8 5/8 in	1/4 in	1/4 in	1/4 in
Shoulder Seam Forward	HPS to seam	false	Full	1/8 in	0 in	0 in	1/2 in	0 in	0 in	0 in
Shoulder Slope	Shoulder point perpendicular to HPS	false	Full	1/4 in	0 in	0 in	2 1/2 in	0 in	0 in	0 in
Across Shoulder	Seam to seam	false	Half	1/4 in	-1 in	-1 in	23 in	1 in	1 1/2 in	1 1/2 in
Across Front/Across Back Position from HPS		true	Full	0 in	-1/4 in	-1/4 in	7 in	1/4 in	1/4 in	1/4 in
Across Front	Straight Down from HPS, Seam to Seam	false	Half	1/4 in	-1 in	-1 in	21 1/2 in	1 in	1 1/2 in	1 1/2 in
Across Back	Straight Down from HPS, Seam to Seam	false	Half	1/4 in	-1 in	-1 in	21 1/2 in	1 in	1 1/2 in	1 1/2 in
Chest Width	1" Below armhole- edge to edge	true	Half	1/4 in	-1 in	-1 in	23 in	1 in	1 1/2 in	1 1/2 in
Bottom Opening Width @ Edge		true	Half	1/4 in	-1 in	-1 in	22 1/2 in	1 in	1 1/2 in	1 1/2 in
Bottom Hem Height		false	Full	1/8 in	0 in	0 in	3/4 in	0 in	0 in	0 in
Sleeve Length from CB Neck	3-point measure from CB Neck to shoulder point to sleeve edge	true	Full	1/2 in	-1 in	-1 in	35 in	1 in	1 in	1 in
Armhole Drop	Below HPS - measure perpendicular	false	Full	1/4 in	-3/8 in	-3/8 in	12 1/2 in	3/8 in	1/2 in	1/2 in
Bicep Width	1" below armhole- edge to edge	false	Half	1/4 in	-3/8 in	-3/8 in	9 3/4 in	3/8 in	1/2 in	1/2 in
Forearm Width	9" up from sleeve cuff edge	false	Half	1/4 in	-1/4 in	-1/4 in	7 1/4 in	1/4 in	3/8 in	3/8 in
Sleeve Opening @ Edge - Extended		true	Half	1/8 in	-1/4 in	-1/4 in	4 3/4 in	1/4 in	1/4 in	1/4 in
Sleeve Opening @ Edge - Relaxed		true	Half	1/8 in	0 in	-1/4 in	4 1/4 in	0 in	1/4 in	1/4 in
Binding Cuff Height		false	Full	1/8 in	0 in	0 in	3/8 in	0 in	0 in	0 in
CF Collar Height		true	Full	1/8 in	0 in	0 in	4 1/2 in	0 in	0 in	0 in
Hood Opening	From Collar Top Edge to Hood Edge	false	Half	3/8 in	0 in	-1/4 in	10 1/2 in	0 in	1/4 in	0 in
Hood Height @ HPS		true	Full	1/4 in	0 in	-1/4 in	13 1/4 in	0 in	1/4 in	0 in
Hood Center Panel Width		false	Full	1/8 in	0 in	0 in	4 in	0 in	0 in	0 in
Hood Width 6" Below Top Edge	Straight from CF edge to CB seam- 6" down	false	Half	3/8 in	-1/4 in	-1/4 in	9 1/2 in	1/4 in	1/4 in	1/4 in
Hood Hem Turnback Height		false	Full	1/8 in	0 in	0 in	7/8 in	0 in	0 in	0 in
Side Seam Pocket Opening		true	Full	1/8 in	-1/4 in	-1/4 in	6 in	1/4 in	1/4 in	1/4 in
Pocket Width at Bottom Edge		true	Full	1/8 in	-1/8 in	-1/8 in	8 in	1/8 in	1/8 in	1/8 in
Pocket Height at Widest		true	Full	1/8 in	-1/8 in	-1/8 in	9 in	1/8 in	1/8 in	1/8 in
Pocket Opening Placement from Bottom Edge	To Bottom Edge of Pocket	true	Full	1/8 in	0 in	0 in	2 1/2 in	0 in	0 in	0 in
Back Yoke Height at Center		false	Full	1/8 in	0 in	0 in	6 1/2 in	0 in	0 in	0 in
WL Artwork Placement from HPS to Top Edge		true	Full	1/8 in	-1/4 in	-1/4 in	7 1/2 in	1/4 in	1/4 in	1/4 in
WL Artwork Placement Out from CF Line		false	Full	1/8 in	-1/8 in	-1/8 in	3 in	1/8 in	1/8 in	1/8 in
CB Artwork Placement Below Yoke Seam		false	Full	1/8 in	0 in	0 in	2 in	0 in	0 in	0 in
Loop Label Placement at Sideseam	Bottom edge to bottom of loop label, at the WL side seam	false	Full	1/8 in	0 in	0 in	7 in	0 in	0 in	0 in

Sample Size: M

POINT OF MEASURE	HOW TO MEASURE	CRITICAL	TYPE	TOLERANCE	XS	S	M	L	XL	XXL
Front Body Length	HPS to bottom edge	true	Full	1/2 in	24 1/2 in	25 3/8 in	26 1/4 in	27 1/8 in	28 in	28 7/8 in
Back Body Length	CB neck seam to bottom edge	true	Full	1/2 in	23 3/4 in	24 5/8 in	25 1/2 in	26 3/8 in	27 1/4 in	28 1/8 in
CF Zipper Length	From neck to bottom edge	false	Full	1/4 in	25 in	25 3/4 in	26 1/2 in	27 1/4 in	28 in	28 3/4 in
Front Neck Drop	HPS to neck seam	false	Full	1/8 in	3 3/4 in	3 7/8 in	4 in	4 1/8 in	4 1/4 in	4 3/8 in
Back Neck Drop	HPS to neck seam	false	Full	1/8 in	3/4 in	3/4 in	3/4 in	3/4 in	3/4 in	3/4 in
Back Neck Width	Seam to seam at back neck, at HPS point	false	Full	1/4 in	8 1/8 in	8 3/8 in	8 5/8 in	8 7/8 in	9 1/8 in	9 3/8 in
Shoulder Seam Forward	HPS to seam	false	Full	1/8 in	1/2 in	1/2 in	1/2 in	1/2 in	1/2 in	1/2 in
Shoulder Slope	Shoulder point perpendicular to HPS	false	Full	1/4 in	2 1/2 in	2 1/2 in	2 1/2 in	2 1/2 in	2 1/2 in	2 1/2 in
Across Shoulder	Seam to seam	false	Half	1/4 in	21 in	22 in	23 in	24 in	25 1/2 in	27 in
Across Front/Across Back Position from HPS		true	Full	0 in	6 1/2 in	6 3/4 in	7 in	7 1/4 in	7 1/2 in	7 3/4 in
Across Front	Straight Down from HPS, Seam to Seam	false	Half	1/4 in	19 1/2 in	20 1/2 in	21 1/2 in	22 1/2 in	24 in	25 1/2 in
Across Back	Straight Down from HPS, Seam to Seam	false	Half	1/4 in	19 1/2 in	20 1/2 in	21 1/2 in	22 1/2 in	24 in	25 1/2 in
Chest Width	1" Below armhole- edge to edge	true	Half	1/4 in	21 in	22 in	23 in	24 in	25 1/2 in	27 in
Bottom Opening Width @ Edge		true	Half	1/4 in	20 1/2 in	21 1/2 in	22 1/2 in	23 1/2 in	25 in	26 1/2 in
Bottom Hem Height		false	Full	1/8 in	3/4 in	3/4 in	3/4 in	3/4 in	3/4 in	3/4 in
Sleeve Length from CB Neck	3-point measure from CB Neck to shoulder point to sleeve edge	true	Full	1/2 in	33 in	34 in	35 in	36 in	37 in	38 in
Armhole Drop	Below HPS - measure perpendicular	false	Full	1/4 in	11 3/4 in	12 1/8 in	12 1/2 in	12 7/8 in	13 3/8 in	13 7/8 in
Bicep Width	1" below armhole- edge to edge	false	Half	1/4 in	9 in	9 3/8 in	9 3/4 in	10 1/8 in	10 5/8 in	11 1/8 in
Forearm Width	9" up from sleeve cuff edge	false	Half	1/4 in	6 3/4 in	7 in	7 1/4 in	7 1/2 in	7 7/8 in	8 1/4 in
Sleeve Opening @ Edge - Extended		true	Half	1/8 in	4 1/4 in	4 1/2 in	4 3/4 in	5 in	5 1/4 in	5 1/2 in
Sleeve Opening @ Edge - Relaxed		true	Half	1/8 in	4 in	4 in	4 1/4 in	4 1/4 in	4 1/2 in	4 3/4 in
Binding Cuff Height		false	Full	1/8 in	3/8 in	3/8 in	3/8 in	3/8 in	3/8 in	3/8 in
CF Collar Height		true	Full	1/8 in	4 1/2 in	4 1/2 in	4 1/2 in	4 1/2 in	4 1/2 in	4 1/2 in
Hood Opening	From Collar Top Edge to Hood Edge	false	Half	3/8 in	10 1/4 in	10 1/4 in	10 1/2 in	10 1/2 in	10 3/4 in	10 3/4 in
Hood Height @ HPS		true	Full	1/4 in	13 in	13 in	13 1/4 in	13 1/4 in	13 1/2 in	13 1/2 in
Hood Center Panel Width		false	Full	1/8 in	4 in	4 in	4 in	4 in	4 in	4 in
Hood Width 6" Below Top Edge	Straight from CF edge to CB seam- 6" down	false	Half	3/8 in	9 in	9 1/4 in	9 1/2 in	9 3/4 in	10 in	10 1/4 in
Hood Hem Turnback Height		false	Full	1/8 in	7/8 in	7/8 in	7/8 in	7/8 in	7/8 in	7/8 in
Side Seam Pocket Opening		true	Full	1/8 in	5 1/2 in	5 3/4 in	6 in	6 1/4 in	6 1/2 in	6 3/4 in
Pocket Width at Bottom Edge		true	Full	1/8 in	7 3/4 in	7 7/8 in	8 in	8 1/8 in	8 1/4 in	8 3/8 in
Pocket Height at Widest		true	Full	1/8 in	8 3/4 in	8 7/8 in	9 in	9 1/8 in	9 1/4 in	9 3/8 in
Pocket Opening Placement from Bottom Edge	To Bottom Edge of Pocket	true	Full	1/8 in	2 1/2 in	2 1/2 in	2 1/2 in	2 1/2 in	2 1/2 in	2 1/2 in
Back Yoke Height at Center		false	Full	1/8 in	6 1/2 in	6 1/2 in	6 1/2 in	6 1/2 in	6 1/2 in	6 1/2 in
WL Artwork Placement from HPS to Top Edge		true	Full	1/8 in	7 in	7 1/4 in	7 1/2 in	7 3/4 in	8 in	8 1/4 in
WL Artwork Placement Out from CF Line		false	Full	1/8 in	2 3/4 in	2 7/8 in	3 in	3 1/8 in	3 1/4 in	3 3/8 in
CB Artwork Placement Below Yoke Seam		false	Full	1/8 in	2 in	2 in	2 in	2 in	2 in	2 in
Loop Label Placement at Sideseam	Bottom edge to bottom of loop label, at the WL side seam	false	Full	1/8 in	7 in	7 in	7 in	7 in	7 in	7 in

Measured Size: M

POINT OF MEASURE	HOW TO MEASURE	CRITICAL	TYPE	TOLERANCE	EXPECTED	PPS - RCVD	VARIANCE	ADJUST BY +/-	REVISED SPEC	MEASUREMENT NOTES
Front Body Length	HPS to bottom edge	true	Full	1/2 in	26 1/4 in	26 1/4 in	0 in	0 in	26 1/4 in	
Back Body Length	CB neck seam to bottom edge	true	Full	1/2 in	25 1/2 in	25 1/4 in	-1/4 in	0 in	25 1/2 in	
CF Zipper Length	From neck to bottom edge	false	Full	1/4 in	26 1/2 in	26 1/4 in	-1/4 in	0 in	26 1/2 in	
Front Neck Drop	HPS to neck seam	false	Full	1/8 in	4 in	4 1/8 in	1/8 in	0 in	4 in	
Back Neck Drop	HPS to neck seam	false	Full	1/8 in	3/4 in	3/4 in	0 in	0 in	3/4 in	
Back Neck Width	Seam to seam at back neck, at HPS point	false	Full	1/4 in	8 5/8 in	8 7/8 in	1/4 in	0 in	8 5/8 in	
Shoulder Seam Forward	HPS to seam	false	Full	1/8 in	1/2 in	1/2 in	0 in	0 in	1/2 in	
Shoulder Slope	Shoulder point perpendicular to HPS	false	Full	1/4 in	2 1/2 in	2 1/2 in	0 in	0 in	2 1/2 in	
Across Shoulder	Seam to seam	false	Half	1/4 in	23 in	23 1/4 in	1/4 in	0 in	23 in	
Across Front/Across Back Position from HPS		true	Full	0 in	7 in	7 in	0 in	0 in	7 in	
Across Front	Straight Down from HPS, Seam to Seam	false	Half	1/4 in	21 1/2 in	21 1/2 in	0 in	0 in	21 1/2 in	
Across Back	Straight Down from HPS, Seam to Seam	false	Half	1/4 in	21 1/2 in	21 1/2 in	0 in	0 in	21 1/2 in	
Chest Width	1" Below armhole- edge to edge	true	Half	1/4 in	23 in	23 1/8 in	1/8 in	0 in	23 in	
Bottom Opening Width @ Edge		true	Half	1/4 in	22 1/2 in	22 3/4 in	1/4 in	0 in	22 1/2 in	
Bottom Hem Height		false	Full	1/8 in	3/4 in	3/4 in	0 in	0 in	3/4 in	
Sleeve Length from CB Neck	3-point measure from CB Neck to shoulder point to sleeve edge	true	Full	1/2 in	35 in	35 in	0 in	0 in	35 in	
Armhole Drop	Below HPS - measure perpendicular	false	Full	1/4 in	12 1/2 in	12 1/2 in	0 in	0 in	12 1/2 in	
Bicep Width	1" below armhole- edge to edge	false	Half	1/4 in	9 3/4 in	9 3/4 in	0 in	0 in	9 3/4 in	
Forearm Width	9" up from sleeve cuff edge	false	Half	1/4 in	7 1/4 in	7 1/4 in	0 in	0 in	7 1/4 in	
Sleeve Opening @ Edge - Extended		true	Half	1/8 in	4 3/4 in	4 3/4 in	0 in	0 in	4 3/4 in	
Sleeve Opening @ Edge - Relaxed		true	Half	1/8 in	4 1/4 in	4 1/4 in	0 in	0 in	4 1/4 in	
Binding Cuff Height		false	Full	1/8 in	3/8 in	3/8 in	0 in	0 in	3/8 in	
CF Collar Height		true	Full	1/8 in	4 1/2 in	4 1/2 in	0 in	0 in	4 1/2 in	
Hood Opening	From Collar Top Edge to Hood Edge	false	Half	3/8 in	10 in	10 1/2 in	1/2 in	1/2 in	10 1/2 in	Keep As Sample
Hood Height @ HPS		true	Full	1/4 in	13 1/4 in	13 3/8 in	1/8 in	0 in	13 1/4 in	
Hood Center Panel Width		false	Full	1/8 in	4 in	4 in	0 in	0 in	4 in	
Hood Width 6" Below Top Edge	Straight from CF edge to CB seam- 6" down	false	Half	3/8 in	9 1/2 in	9 1/2 in	0 in	0 in	9 1/2 in	
Hood Hem Turnback Height		false	Full	1/8 in	7/8 in	7/8 in	0 in	0 in	7/8 in	
Side Seam Pocket Opening		true	Full	1/8 in	6 in	6 in	0 in	0 in	6 in	
Pocket Width at Bottom Edge		true	Full	1/8 in	8 in	8 in	0 in	0 in	8 in	
Pocket Height at Widest		true	Full	1/8 in	9 in	9 in	0 in	0 in	9 in	
Pocket Opening Placement from Bottom Edge	To Bottom Edge of Pocket	true	Full	1/8 in	2 1/2 in	2 1/2 in	0 in	0 in	2 1/2 in	
Back Yoke Height at Center		false	Full	1/8 in	6 1/2 in	6 1/2 in	0 in	0 in	6 1/2 in	
WL Artwork Placement from HPS to Top Edge		true	Full	1/8 in	7 1/2 in	7 1/2 in	0 in	0 in	7 1/2 in	
WL Artwork Placement Out from CF Line		false	Full	1/8 in	3 in	3 1/8 in	1/8 in	0 in	3 in	
CB Artwork Placement Below Yoke Seam		false	Full	1/8 in	2 in	2 in	0 in	0 in	2 in	

Loop Label Placement at Sideseam	Bottom edge to bottom of loop label, at the WL side seam	false	Full	1/8 in	7 in	0 in	0 in	0 in	7 in	
----------------------------------	--	-------	------	--------	------	------	------	------	------	--

PPS - Anastasiya Zolotova

CREATED ON JAN 8, 2026 7:57 PM

PPS: SIZE:M, CREATED AT: 01-05-2026

NB26CH000 NB Zip Hoodie

FITTING DATE: 1/6/26**MODEL/ATTENDEES:** Bigs, Cal, Lombardo, Anastasiya, Hyeyoung, Jeni, Sarah**STATUS:** PPS Requesting Photo of 2nd PPS w/Construction + Stitching Updates**Fit Comments:**

1. Keep hood opening as sample at 10 1/2".
1. Giữ nguyên thông số mở vòng cổ (vòng mũ) như mẫu là 10 1/2"

Grading:

1. Updated sleeve opening relaxed and extended opening please validate.
1. Đã cập nhật thông số cửa tay lúc để êm và lúc kéo căng, xướng vui lòng xác nhận lại.
2. Does fty suggest to grade center hood panel width?
2. Xướng có đề xuất nhảy size cho độ rộng của mảnh dọc giữa mũ không?
3. See pocket grading and confirm.
3. Xem bảng nhảy size của túi và xác nhận lại.

Construction/Workmanship:

1. Please change all stitching to tonal.
 2. Please improve workmanship across all seams. The seams are wavy.
 3. The hood facing is uneven, see image.
 4. Is there a way to improve top stitching workmanship at front panel top stitching where artwork disrupts the stitching? See image.
 5. The bungee construction at hood and hem don't allow for continuous stitching along the tunnel and the finishing looks very mess. Is there any way to improve if we keep current construction?
 6. If there is time for 2nd PPS can fty revise construction at hem and hood opening to be buttonhole thread eyelet 1" apart centered on tunnel?
1. Vui lòng thay đổi toàn bộ chỉ may sang màu chỉ cùng màu với vải
 2. Vui lòng cải thiện tay nghề may trên tất cả các đường may. Các đường may hiện đang bị sóng/nhăn.
 3. Phần đắp mũ không đều, xem hình ảnh đính kèm
 4. Có cách nào cải thiện đường diễu ở thân trước tại những vị trí hình in đè lên đường may không? (Hình in làm đường diễu bị đứt quãng hoặc không đều)
 5. Kết cấu dây chun ở mũ và lai áo làm đường may dọc theo ống luồng dây không được liên tục, khiến thành phẩm trông rất cầu thả/lộn xộn.
 6. Nếu kịp làm mẫu PPS lần 2, xướng có thể sửa lại kết cấu ở lai và vòng mũ thành: làm khuy mắt phượng (thread eyelet) cách nhau 1", nằm chính giữa ống luồng dây không?

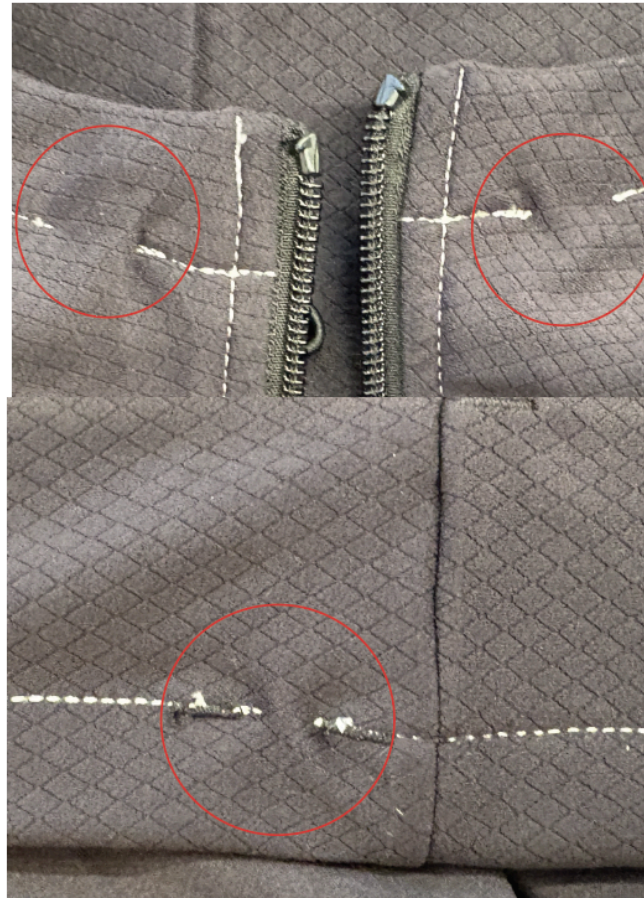


Screen Shot 2026-01-08 at 12.00.54 PM.jpg

Kết cấu dây chun ở mũ và lai áo làm đường may dọc theo ống
luồn dây không được liên tục, khiến thành phẩm trông rất cầu
thả/lộn xộn.

NB26CH000 NB Zip Hoodie

The bungee construction at hood and hem don't allow for continuous stitching along the tunnel and the finishing looks very mess. Is there any way to improve if we keep current construction?



Screen Shot 2026-01-08 at 5.28.12 PM.jpg

Nếu kịp làm mẫu PPS lần 2, xường có thể sửa lại kết cấu ở lai và vòng mũ thành: làm khuy mắt phượng (thread eyelet) cách nhau 1", nằm chính giữa ống luồng dây không?

NB26CH000 NB Zip Hoodie

If there is time for 2nd PPS can fty revise construction at hem and hood opening to be buttonhole thread eyelet 1" apart?



Screen Shot 2026-01-08 at 5.30.11 PM.jpg

Phần nắp mũ không đều, xem hình ảnh đính kèm.

NB26CH000 NB Zip Hoodie

The hood facing is uneven, see image.



Screen Shot 2026-01-08 at 5.33.04 PM.jpg

Có cách nào cải thiện đường diều ở thân trước tại những vị trí hình in đè lên đường may không? (Hình in làm đường diều bị đứt quãng hoặc không đều).

NB26CH000 NB Zip Hoodie

Is there a way to improve top stitching workmanship at front panel top stitching where artwork disrupts the stitching?



Screen Shot 2026-01-08 at 5.34.40 PM.jpg