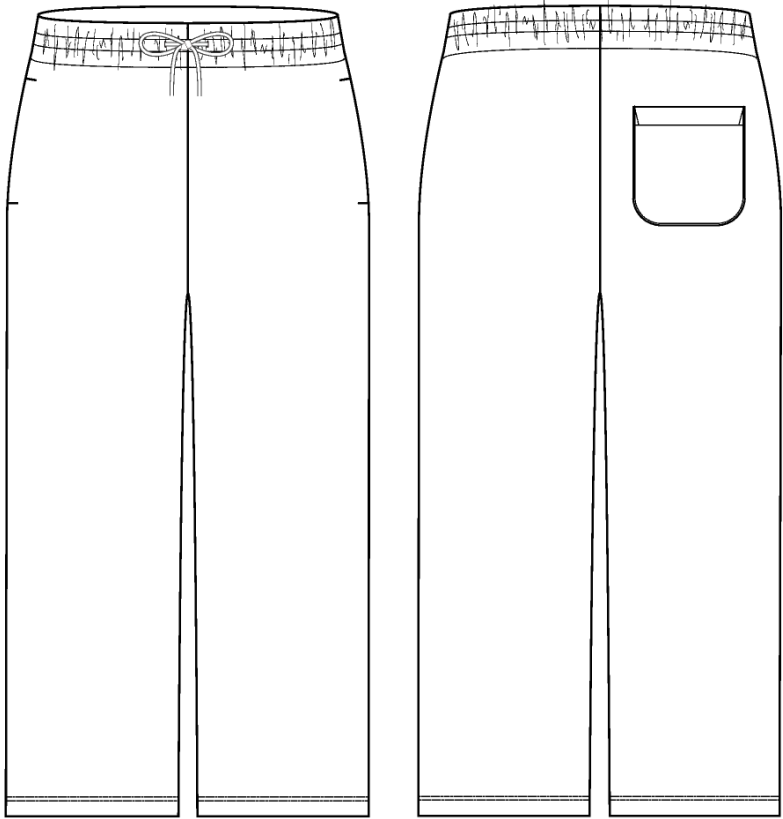
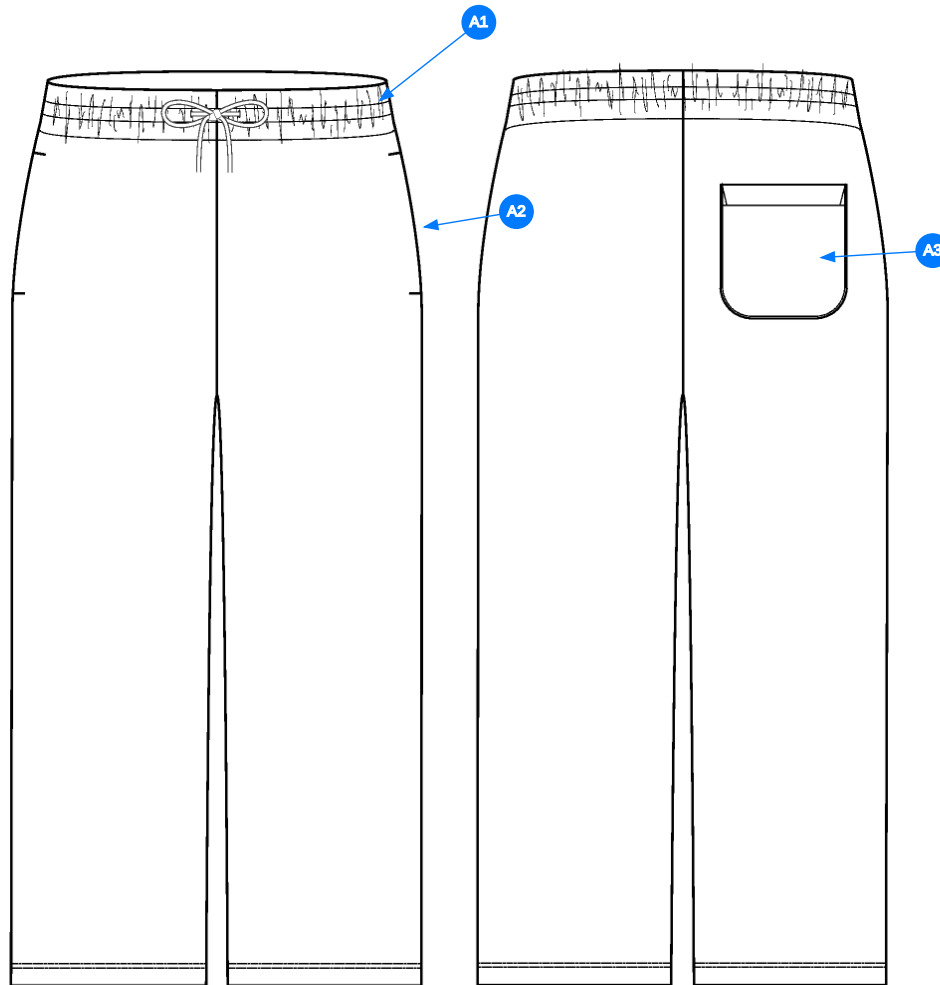


Sweatpant (Open Bottom)

Name	Sweatpant (Open Bottom)
Style No.	FB14
Division	Mens
Category	Sweatpants
Year	2023
Size Scale	M -Sample size
	XS S M L XL XXL
Factory	UN-AVAILABLE
Created by/Author	11/11/2025
	Anastasiya Zolotova
	anastasiya.zolotova@aimeleondore.com



1_B&W-1

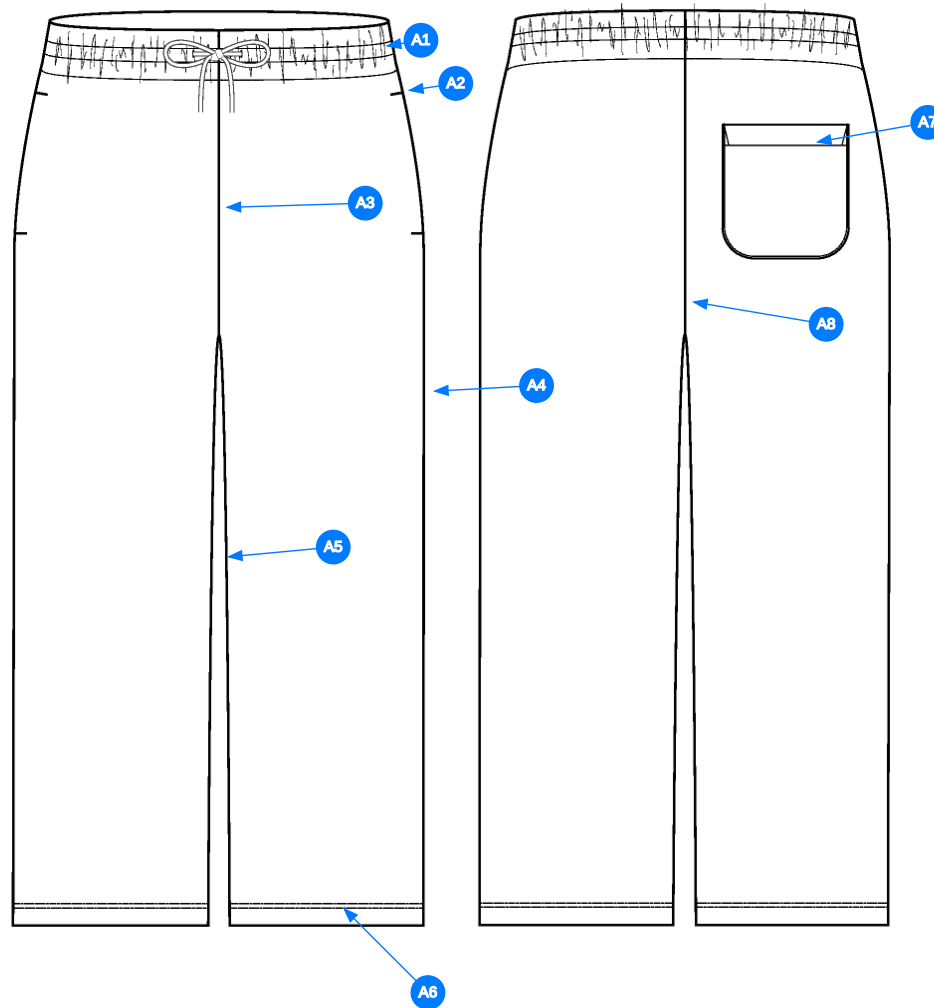


Comments (3)

- A1** GROWN ON ELASTICATED WAISTBAND W/ EXTERIOR DRAWCORDS - ROUND BRAIDED DRAWCORDS - KNOTTED FINISH W/ FRAYED ENDS
- A2** ON SEAM POCKETS @ SIDE SEAM - USE COTTON JERSEY FOR KNUCKLE SIDE - USE SELF FABRIC FOR PALM SIDE
- A3** SELF FABRIC PATCH POCKET

1. lưng thun liền, dây luồn tròn cột đầu/ đánh toi.
2. túi sườn - sử dụng vải jersey làm lót túi mặt mu bàn tay - sử dụng vải chính làm lót túi mặt lòng bàn tay
3. túi sau bằng vải chính.

2_Construction-1



Comments (8)

- A1** 1/4" DN TS @ WAISTBAND
- A2** SN EDGESTITCH @ POCKETS - BAR TACK @ TOP & BOTTOM
- A3** CLEAN SEAM FINISH @ FRONT RISE
- A4** CLEAN SEAM FINISH @ SIDE SEAM
- A5** CLEAN SEAM FINISH @ INSEAM
- A6** 1/4 " DN TS @ BOTTOM HEM
- A7** EDGE STITCH @ PATCH POCKET
- A8** CLEAN SEAM FINISH @ BACK RISE SEAM

1. điều 2 kim 1/4" tại lưng quần
2. mí điều tại túi - bộ cạnh trên và cạnh dưới túi
3. may sạch tại đáy trước
4. may sạch tại sườn ngoài
5. may sạch tại sườn trong
6. điều 2 kim 1/4" tại lai quần
7. mí điều tại túi sau
8. may sạch tại đường may đáy sau

3_Stitching-1

Measured Size: M

POINT OF MEASURE	HOW TO MEASURE	CRITICAL	TYPE	TOLERANCE	EXPECTED	1ST FIT - RCVD	VARIANCE	ADJUST BY +/-	REVISED SPEC	MEASUREMENT NOTES
Waistband Height	Waist seam to top edge	false	Full	1/8 in	2 in	2 in	0 in	0 in	2 in	
Waist Width Relaxed	Straight at top edge-garment relaxed	true	Half	1/4 in	15 3/8 in	15 1/2 in	1/8 in	0 in	15 3/8 in	
Waist Width Extended	Straight, with waist or elastic stretched	true	Half	1/4 in	21 in	20 1/2 in	-1/2 in	0 in	21 in	Back to Spec
Distance Between Drawcord Exit		false	Full	1/8 in	1 1/2 in	1 5/8 in	1/8 in	0 in	1 1/2 in	
Exposed Drawcord Length		false	Full	1/2 in	10 in	10 in	0 in	0 in	10 in	
Front Rise	Crotch seam to waistband top edge	true	Half	1/4 in	13 1/4 in	13 1/2 in	1/4 in	0 in	13 1/4 in	
Back Rise	Crotch seam to waistband top edge	true	Half	1/4 in	17 in	17 in	0 in	0 in	17 in	
Low Hip Position Below Waistband Top Edge		true	Full	0 in	8 in	8 in	0 in	0 in	8 in	
Low Hip Width	3-pt measurement taken 8" down from waistband top edge	true	Half	1/4 in	21 1/2 in	21 3/4 in	1/4 in	0 in	21 1/2 in	
Thigh Width	1" below crotch point	false	Half	1/4 in	13 1/4 in	13 3/4 in	1/2 in	1/2 in	13 3/4 in	Keep as Sample
Knee Width	12" down from the crotch point	false	Half	1/4 in	11 1/2 in	11 1/4 in	-1/4 in	0 in	11 1/2 in	
Calf Width	Measured 18" down from Crotch point	false	Half	1/4 in	10 3/4 in	10 1/2 in	-1/4 in	0 in	10 3/4 in	
Leg Opening width at edge		false	Half	1/8 in	10 in	10 in	0 in	0 in	10 in	
Inseam Length	Crotch point to leg opening, along seam	true	Full	3/8 in	29 1/2 in	29 1/4 in	-1/4 in	1 in	30 1/2 in	Increase 11.11
Bottom Hem Height	Bottom edge to stitch line or trim seam	false	Full	1/8 in	1 in	1 in	0 in	0 in	1 in	
Front Pocket Placement Below Waistband	Waistband seam to top of pocket	false	Full	1/4 in	3/4 in	3/4 in	0 in	0 in	3/4 in	
Front Pocket Opening Length		true	Full	1/4 in	6 1/4 in	6 in	-1/4 in	0 in	6 1/4 in	
Pocket Bag Height	Top edge to bottom edge of pocket bag inside	false	Full	1/8 in	11 1/2 in	11 1/2 in	0 in	0 in	11 1/2 in	
Pocket Bag Width		false	Full	1/8 in	7 in	6 1/2 in	-1/2 in	0 in	7 in	Back to Spec
WR Back Pocket Placement Below Waistband Seam Outer Corner	Waistband seam to top of pocket	false	Full	1/4 in	2 1/4 in	2 1/4 in	0 in	0 in	2 1/4 in	
WR Back Pocket Placement Below Waistband Seam Inner Corner		false	Full	1/8 in	2 3/8 in	2 3/8 in	0 in	0 in	2 3/8 in	
Back Pocket Placement from CB Rise	Inside edge of pocket to CB rise seam	false	Full	1/4 in	2 1/4 in	2 in	-1/4 in	0 in	2 1/4 in	
Back Pocket Hem Height	Edge to stitch line	false	Full	1/8 in	3/4 in	3/4 in	0 in	0 in	3/4 in	
Back Pocket Width	Width of pocket at widest	false	Full	1/4 in	5 3/4 in	5 3/4 in	0 in	0 in	5 3/4 in	
Back Pocket Height	Top edge to bottom edge	false	Full	1/4 in	6 1/4 in	6 in	-1/4 in	0 in	6 1/4 in	

1st Fit - Anastasiya Zolotova

CREATED ON OCT 8, 2025 7:35 PM
1ST FIT: SIZE:M, CREATED AT: 10-06-2025

11/11/25:
Increase inseam to 30 1/2"

FB14 Sweatpant
FITTING DATE: 10/7/25
MODEL/ATTENDEES: Anthony, Jessica, Cal, Jeni, Anastasiya, Hyeyoung, Sarah
STATUS: Fit Block Approved

Update Below NOS Styles:

- 1. Please apply to NOSCP002 - need separate pattern for elasticated leg opening.
- 2. Please apply to NOSCP003 - need separate pattern due to pieced on waistband and elasticated leg opening.
- 3. NOSCP001 - need separate pattern due to pieced on waistband.

Fit Comments:

- 1. The pattern corrections were executed as requested, thank you!
- 2. Waist extended came in -1/2", go back to spec.
- 3. Keep thigh 13 3/4" as sample.
- 4. Pocket bag width came in -1/2", go back to spec.

Workmanship:

- 1. WR inseam is shorter than WL
- 2. WR bottom hem is more angled toward the inseam. Front and back inseam length might not match or inseam stretched out, or fabric cut slightly off the pattern shape.
Please fix.

fit comment:

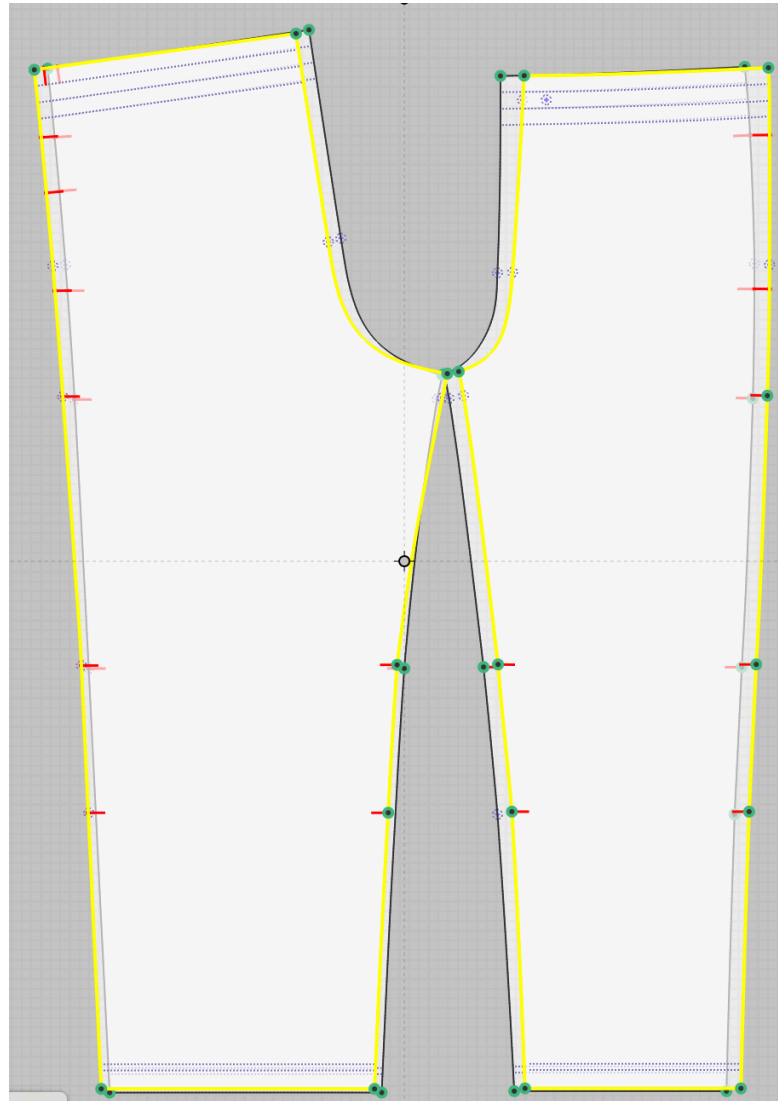
- 1. rập đã được chỉnh sửa theo đúng yêu cầu
- 2. lưng quần đo êm hực -1/2", điều chỉnh thông số trong dung sai
- 3. giữa đùi như mẫu 13 3/4"
- 4. rộng túi hực -1/2", điều chỉnh thông số trong dung sai

workmanship

- 1. sườn trong quần phải ngắn hơn quần trái
- 2. lai quần phải nghiêng nhiều hơn về phía sườn trong. Chiều dài sườn trong phía trước và phía sau có thể không khớp hoặc sườn trong bị giãn, hoặc vải cắt hơi lệch so với rập. Vui lòng sửa lại.



Screen Shot 2025-10-08 at 3.35.16 PM.jpg



Screen Shot 2025-10-08 at 3.33.45 PM.jpg



IMG_2199.jpg



IMG_2200.jpg



IMG_2201.jpg