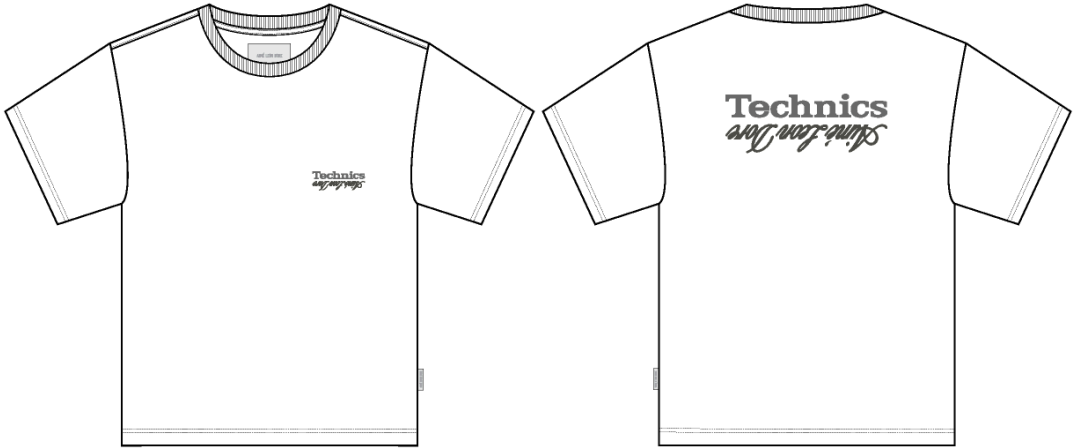


SS Technics Tee

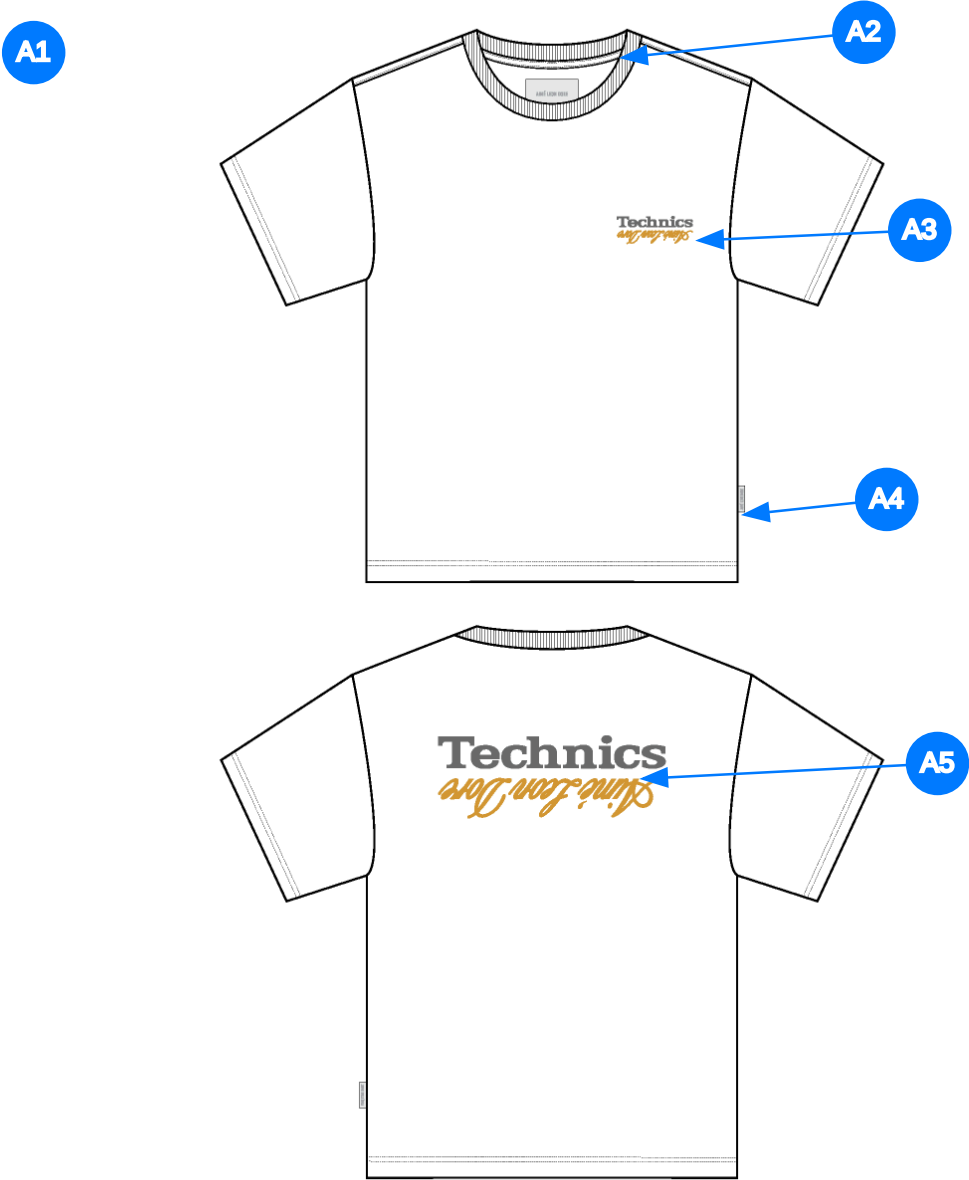
Name	SS Technics Tee
Style No.	SS26CT096
Description	Fit: Boxy
Division	Mens
Category	Tees
Season	Spring/Summer
Year	2026
Size Scale	<div>M -Sample size</div> <div><div>XS</div><div>S</div><div>M</div><div>L</div><div>XL</div><div>XXL</div></div>
Style Status	Adopted
Factory	UN-AVAILABLE
Designer Name	Victor
TD Name	Anastasiya
Created by/Author	9/4/2025 Anastasiya Zolotova anastasiya.zolotova@aimeleondore.com



1\_B&W-1



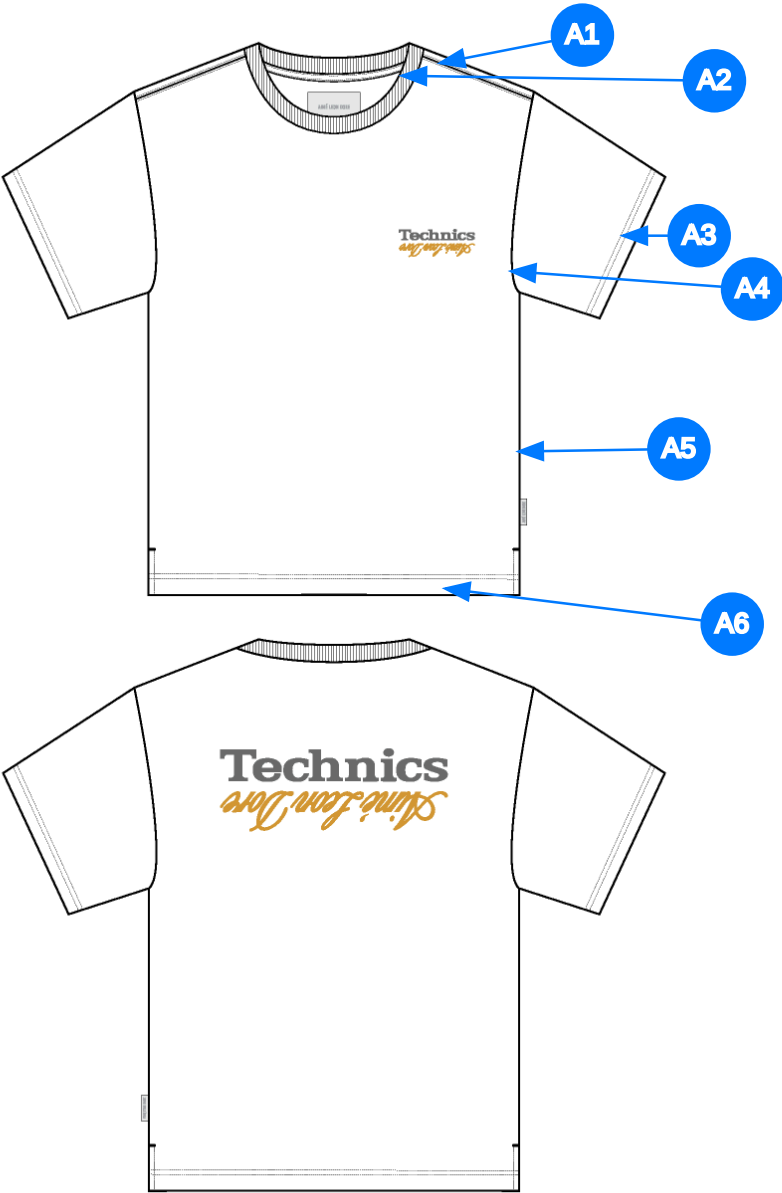
2\_CLR-1



Comments (5)

- A1 BOXY FIT POCKET TEE
- A2 1X1 RIB DOUBLED @ NECK - JERSEY TAPE ALONG BACK NECK & SHOULDER
- A3 ARTWORK @ WL CHEST - SEE SEPARATE FILE FOR ARTWORK DETAILS
- A4 ALD WOVEN LABEL @ SIDE SEAM
- A5 ARTWORK @ CB - SEE SEPARATE FILE FOR ARTWORK DETAILS

3\_Construction Details-1



- Comments (6)
- A1 STRADDLE STITCH @ SHOULDER SEAM
  - A2 STRADDLE STITCH @ NECK
  - A3 1/4" DN TS @ SLEEVE HEM - TURNBACK W/ COVERLOCK STITCH
  - A4 CLEAN SEAM FINISH @ ARMHOLE
  - A5 CLEAN SEAM FINISH @ SIDE SEAM
  - A6 1/4" DN TS @ BOTTOM HEM - TURNBACK W/ COVERLOCK STITCH

4\_Stitching Details-1

Sample Size: M

POINT OF MEASURE	HOW TO MEASURE	CRITICAL	TYPE	TOLERANCE	M
Front Body Length	HPS to bottom edge	true	Full	1/2 in	27 in
Back Body Length	CB neck seam to bottom edge	true	Full	1/2 in	26 in
Shoulder Seam Forward	HPS to seam	false	Full	1/8 in	1/2 in
Shoulder Slope	Shoulder point perpendicular to HPS	false	Full	1/4 in	2 in
Front Neck Drop	HPS to neck seam	false	Full	1/8 in	4 1/4 in
Back Neck Drop	HPS to neck seam	false	Full	1/8 in	1 in
Back Neck Width	Seam to seam at back neck, at HPS point	false	Full	1/4 in	7 3/4 in
Neck Trim Height	Neck Seam to trim edge	false	Full	1/8 in	13/16 in
Minimum Neck Stretch		true	Half	0 in	11 1/2 in
Across Shoulder	Seam to seam	false	Half	1/4 in	21 in
Across Front/Across Back Position from HPS		true	Full	0 in	7 in
Across Front	Down from HPS, Seam to seam	false	Half	1/4 in	20 in
Across Back	Down from HPS, Seam to Seam	false	Half	1/4 in	20 in
Chest Width	1" Below armhole- edge to edge	true	Half	1/4 in	22 1/2 in
Bottom Opening Width- At Edge	At bottom edge	true	Half	1/4 in	22 1/2 in
Bottom Hem Height	Bottom edge to stitch line or trim seam	false	Full	1/8 in	1 in
Sleeve Length from CB Neck	3-point measure from CB Neck to shoulder point to sleeve edge	true	Full	3/8 in	19 1/4 in
Armhole Drop	Below HPS - measure perpendicular	false	Full	1/4 in	11 1/2 in
Bicep Width	1" below armhole- edge to edge	false	Half	1/4 in	8 7/8 in
Sleeve Opening Width- At Edge	At edge	false	Half	1/4 in	8 in
Sleeve Hem Height	Edge to seam- trim width	false	Full	1/8 in	1 in
WL Artwork Placement from HPS to Top Edge		true	Full	1/8 in	7 3/4 in
WL Artwork Placement Out from CF Line		false	Full	1/8 in	2 1/4 in
CB Artwork Placement below CB Neck Seam	From CB Neck Seam to Top Edge of Artwork	false	Full	1/8 in	4 in
Loop Label Placement at Sideseam	Bottom edge to bottom of loop label, at the WL side seam	false	Full	1/8 in	7 in

Sample Size: M

POINT OF MEASURE	HOW TO MEASURE	CRITICAL	TYPE	TOLERANCE	M
Front Body Length	HPS to bottom edge	true	Full	1/2 in	27 in
Back Body Length	CB neck seam to bottom edge	true	Full	1/2 in	26 in
Shoulder Seam Forward	HPS to seam	false	Full	1/8 in	1/2 in
Shoulder Slope	Shoulder point perpendicular to HPS	false	Full	1/4 in	2 in
Front Neck Drop	HPS to neck seam	false	Full	1/8 in	4 1/4 in
Back Neck Drop	HPS to neck seam	false	Full	1/8 in	1 in
Back Neck Width	Seam to seam at back neck, at HPS point	false	Full	1/4 in	7 3/4 in
Neck Trim Height	Neck Seam to trim edge	false	Full	1/8 in	13/16 in
Minimum Neck Stretch		true	Half	0 in	11 1/2 in
Across Shoulder	Seam to seam	false	Half	1/4 in	21 in
Across Front/Across Back Position from HPS		true	Full	0 in	7 in
Across Front	Down from HPS, Seam to seam	false	Half	1/4 in	20 in
Across Back	Down from HPS, Seam to Seam	false	Half	1/4 in	20 in
Chest Width	1" Below armhole- edge to edge	true	Half	1/4 in	22 1/2 in
Bottom Opening Width- At Edge	At bottom edge	true	Half	1/4 in	22 1/2 in
Bottom Hem Height	Bottom edge to stitch line or trim seam	false	Full	1/8 in	1 in
Sleeve Length from CB Neck	3-point measure from CB Neck to shoulder point to sleeve edge	true	Full	3/8 in	19 1/4 in
Armhole Drop	Below HPS - measure perpendicular	false	Full	1/4 in	11 1/2 in
Bicep Width	1" below armhole- edge to edge	false	Half	1/4 in	8 7/8 in
Sleeve Opening Width- At Edge	At edge	false	Half	1/4 in	8 in
Sleeve Hem Height	Edge to seam- trim width	false	Full	1/8 in	1 in
WL Artwork Placement from HPS to Top Edge		true	Full	1/8 in	7 3/4 in
WL Artwork Placement Out from CF Line		false	Full	1/8 in	2 1/4 in
CB Artwork Placement below CB Neck Seam	From CB Neck Seam to Top Edge of Artwork	false	Full	1/8 in	4 in
Loop Label Placement at Sideseam	Bottom edge to bottom of loop label, at the WL side seam	false	Full	1/8 in	7 in

Development Notes - Anastasiya Zolotova

CREATED ON JAN 10, 2025 9:55 PM

SS26CT096 SS Technics Tee  
Date: 9/4/25  
Status: Direct to PPS  
TD: Anastasiya

Fit: Please follow FB091 "Boxy Tee" T-Shirt Fit

THEO FIT MÃ FB091 BOXY TEE