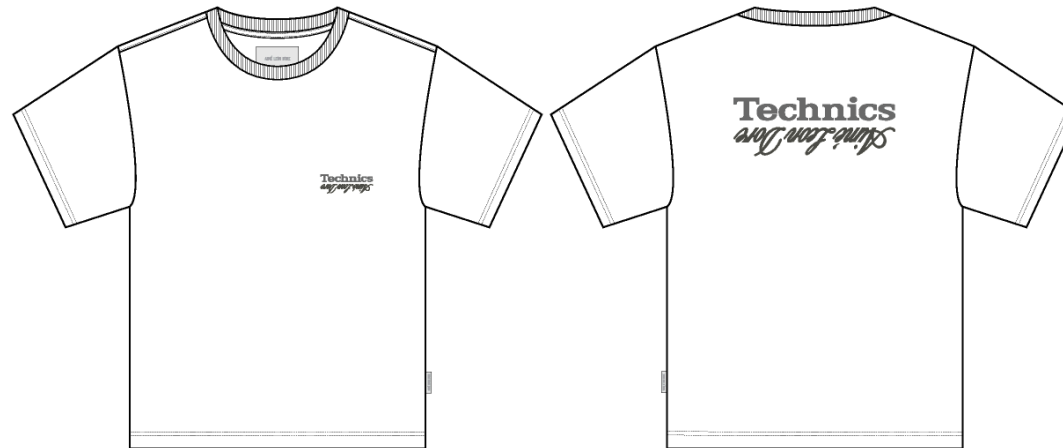


SS Technics Tee

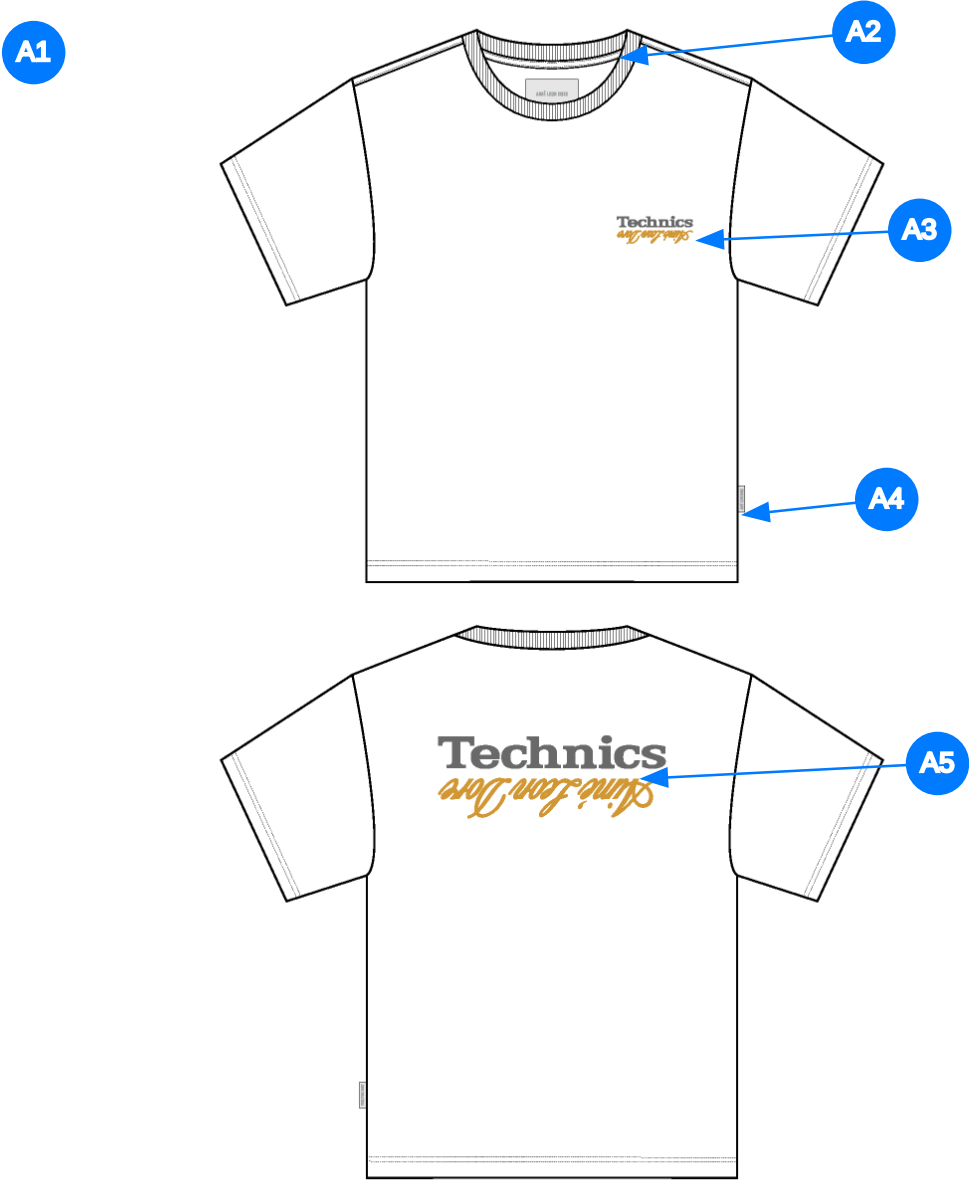
Name	SS Technics Tee
Style No.	SS26CT096
Description	Fit: Boxy
Division	Mens
Category	Tees
Season	Spring/Summer
Year	2026
Size Scale	<div>M -Sample size</div> <div><div>XS</div><div>S</div><div>M</div><div>L</div><div>XL</div><div>XXL</div></div>
Style Status	Adopted
Factory	UN-AVAILABLE
Designer Name	Victor
TD Name	Anastasiya
Created by/Author	10/3/2025 Anastasiya Zolotova anastasiya.zolotova@aimeleondore.com



1_B&W-1



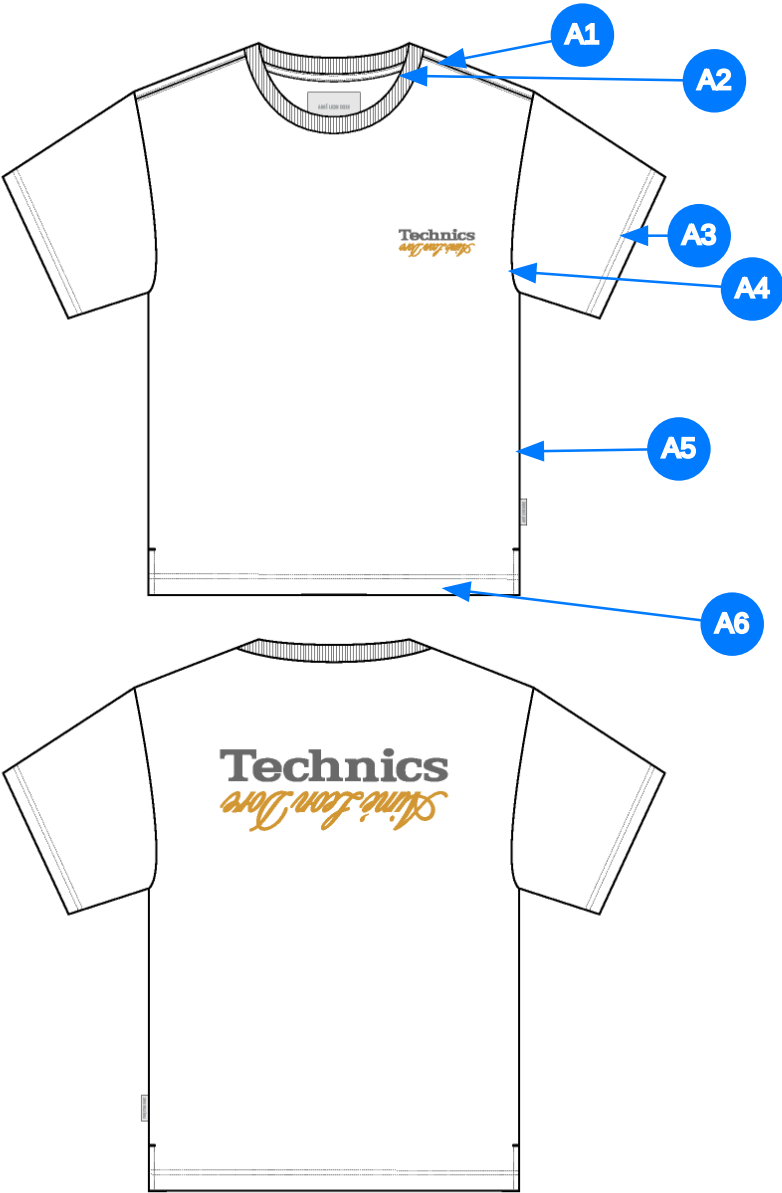
2_CLR-1



Comments (5)

- A1 BOXY FIT POCKET TEE
- A2 1X1 RIB DOUBLED @ NECK - JERSEY TAPE ALONG BACK NECK & SHOULDER
- A3 ARTWORK @ WL CHEST - SEE SEPARATE FILE FOR ARTWORK DETAILS
- A4 ALD WOVEN LABEL @ SIDE SEAM
- A5 ARTWORK @ CB - SEE SEPARATE FILE FOR ARTWORK DETAILS

3_Construction Details-1



- Comments (6)
- A1 STRADDLE STITCH @ SHOULDER SEAM
 - A2 STRADDLE STITCH @ NECK
 - A3 1/4" DN TS @ SLEEVE HEM - TURNBACK W/ COVERLOCK STITCH
 - A4 CLEAN SEAM FINISH @ ARMHOLE
 - A5 CLEAN SEAM FINISH @ SIDE SEAM
 - A6 1/4" DN TS @ BOTTOM HEM - TURNBACK W/ COVERLOCK STITCH

4_Stitching Details-1

Sample Size: M

POINT OF MEASURE	HOW TO MEASURE	CRITICAL	TYPE	TOLERANCE	XS	S	M	L	XL	XXL
Front Body Length	HPS to bottom edge	true	Full	1/2 in	-7/8 in	-7/8 in	27 in	7/8 in	7/8 in	7/8 in
Back Body Length	CB neck seam to bottom edge	true	Full	1/2 in	-7/8 in	-7/8 in	26 in	7/8 in	7/8 in	7/8 in
Shoulder Seam Forward	HPS to seam	false	Full	1/8 in	0 in	0 in	1/2 in	0 in	0 in	0 in
Shoulder Slope	Shoulder point perpendicular to HPS	false	Full	1/4 in	0 in	0 in	2 in	0 in	0 in	0 in
Front Neck Drop	HPS to neck seam	false	Full	1/8 in	-1/8 in	-1/8 in	4 1/4 in	1/8 in	1/8 in	1/8 in
Back Neck Drop	HPS to neck seam	false	Full	1/8 in	0 in	0 in	1 in	0 in	0 in	0 in
Back Neck Width	Seam to seam at back neck, at HPS point	false	Full	1/4 in	-1/4 in	-1/4 in	7 3/4 in	1/4 in	1/4 in	1/4 in
Neck Trim Height	Neck Seam to trim edge	false	Full	1/8 in	0 in	0 in	13/16 in	0 in	0 in	0 in
Minimum Neck Stretch		true	Half	0 in	0 in	0 in	11 1/2 in	0 in	0 in	0 in
Across Shoulder	Seam to seam	false	Half	1/4 in	-3/4 in	-3/4 in	21 in	3/4 in	1 in	1 in
Across Front/Across Back Position from HPS		true	Full	0 in	-1/4 in	-1/4 in	7 in	1/4 in	1/4 in	1/4 in
Across Front	Down from HPS, Seam to seam	false	Half	1/4 in	-3/4 in	-3/4 in	20 in	3/4 in	1 in	1 in
Across Back	Down from HPS, Seam to Seam	false	Half	1/4 in	-3/4 in	-3/4 in	20 in	3/4 in	1 in	1 in
Chest Width	1" Below armhole- edge to edge	true	Half	1/4 in	-1 in	-1 in	22 1/2 in	1 in	1 1/2 in	1 1/2 in
Bottom Opening Width- At Edge	At bottom edge	true	Half	1/4 in	-1 in	-1 in	22 1/2 in	1 in	1 1/2 in	1 1/2 in
Bottom Hem Height	Bottom edge to stitch line or trim seam	false	Full	1/8 in	0 in	0 in	1 in	0 in	0 in	0 in
Sleeve Length from CB Neck	3-point measure from CB Neck to shoulder point to sleeve edge	true	Full	3/8 in	-3/4 in	-3/4 in	19 1/4 in	3/4 in	1 in	1 in
Armhole Drop	Below HPS - measure perpendicular	false	Full	1/4 in	-3/8 in	-3/8 in	11 1/2 in	3/8 in	1/2 in	1/2 in
Bicep Width	1" below armhole- edge to edge	false	Half	1/4 in	-3/8 in	-3/8 in	8 7/8 in	3/8 in	1/2 in	1/2 in
Sleeve Opening Width- At Edge	At edge	false	Half	1/4 in	-1/4 in	-1/4 in	8 in	1/4 in	3/8 in	3/8 in
Sleeve Hem Height	Edge to seam- trim width	false	Full	1/8 in	0 in	0 in	1 in	0 in	0 in	0 in
WL Artwork Placement from HPS to Top Edge		true	Full	1/8 in	-1/4 in	-1/4 in	8 in	1/4 in	1/4 in	1/4 in
WL Artwork Placement Out from CF Line		false	Full	1/8 in	-1/8 in	-1/8 in	2 3/8 in	1/8 in	1/8 in	1/8 in
CB Artwork Placement below CB Neck Seam	From CB Neck Seam to Top Edge of Artwork	false	Full	1/8 in	0 in	0 in	4 in	0 in	0 in	0 in
Loop Label Placement at Sideseam	Bottom edge to bottom of loop label, at the WL side seam	false	Full	1/8 in	0 in	0 in	7 in	0 in	0 in	0 in

Sample Size: M

POINT OF MEASURE	HOW TO MEASURE	CRITICAL	TYPE	TOLERANCE	XS	S	M	L	XL	XXL
Front Body Length	HPS to bottom edge	true	Full	1/2 in	25 1/4 in	26 1/8 in	27 in	27 7/8 in	28 3/4 in	29 5/8 in
Back Body Length	CB neck seam to bottom edge	true	Full	1/2 in	24 1/4 in	25 1/8 in	26 in	26 7/8 in	27 3/4 in	28 5/8 in
Shoulder Seam Forward	HPS to seam	false	Full	1/8 in	1/2 in	1/2 in	1/2 in	1/2 in	1/2 in	1/2 in
Shoulder Slope	Shoulder point perpendicular to HPS	false	Full	1/4 in	2 in	2 in	2 in	2 in	2 in	2 in
Front Neck Drop	HPS to neck seam	false	Full	1/8 in	4 in	4 1/8 in	4 1/4 in	4 3/8 in	4 1/2 in	4 5/8 in
Back Neck Drop	HPS to neck seam	false	Full	1/8 in	1 in	1 in	1 in	1 in	1 in	1 in
Back Neck Width	Seam to seam at back neck, at HPS point	false	Full	1/4 in	7 1/4 in	7 1/2 in	7 3/4 in	8 in	8 1/4 in	8 1/2 in
Neck Trim Height	Neck Seam to trim edge	false	Full	1/8 in	13/16 in	13/16 in	13/16 in	13/16 in	13/16 in	13/16 in
Minimum Neck Stretch		true	Half	0 in	11 1/2 in	11 1/2 in	11 1/2 in	11 1/2 in	11 1/2 in	11 1/2 in
Across Shoulder	Seam to seam	false	Half	1/4 in	19 1/2 in	20 1/4 in	21 in	21 3/4 in	22 3/4 in	23 3/4 in
Across Front/Across Back Position from HPS		true	Full	0 in	6 1/2 in	6 3/4 in	7 in	7 1/4 in	7 1/2 in	7 3/4 in
Across Front	Down from HPS, Seam to seam	false	Half	1/4 in	18 1/2 in	19 1/4 in	20 in	20 3/4 in	21 3/4 in	22 3/4 in
Across Back	Down from HPS, Seam to Seam	false	Half	1/4 in	18 1/2 in	19 1/4 in	20 in	20 3/4 in	21 3/4 in	22 3/4 in
Chest Width	1" Below armhole- edge to edge	true	Half	1/4 in	20 1/2 in	21 1/2 in	22 1/2 in	23 1/2 in	25 in	26 1/2 in
Bottom Opening Width- At Edge	At bottom edge	true	Half	1/4 in	20 1/2 in	21 1/2 in	22 1/2 in	23 1/2 in	25 in	26 1/2 in
Bottom Hem Height	Bottom edge to stitch line or trim seam	false	Full	1/8 in	1 in	1 in	1 in	1 in	1 in	1 in
Sleeve Length from CB Neck	3-point measure from CB Neck to shoulder point to sleeve edge	true	Full	3/8 in	17 3/4 in	18 1/2 in	19 1/4 in	20 in	21 in	22 in
Armhole Drop	Below HPS - measure perpendicular	false	Full	1/4 in	10 3/4 in	11 1/8 in	11 1/2 in	11 7/8 in	12 3/8 in	12 7/8 in
Bicep Width	1" below armhole- edge to edge	false	Half	1/4 in	8 1/8 in	8 1/2 in	8 7/8 in	9 1/4 in	9 3/4 in	10 1/4 in
Sleeve Opening Width- At Edge	At edge	false	Half	1/4 in	7 1/2 in	7 3/4 in	8 in	8 1/4 in	8 5/8 in	9 in
Sleeve Hem Height	Edge to seam- trim width	false	Full	1/8 in	1 in	1 in	1 in	1 in	1 in	1 in
WL Artwork Placement from HPS to Top Edge		true	Full	1/8 in	7 1/2 in	7 3/4 in	8 in	8 1/4 in	8 1/2 in	8 3/4 in
WL Artwork Placement Out from CF Line		false	Full	1/8 in	2 1/8 in	2 1/4 in	2 3/8 in	2 1/2 in	2 5/8 in	2 3/4 in
CB Artwork Placement below CB Neck Seam	From CB Neck Seam to Top Edge of Artwork	false	Full	1/8 in	4 in	4 in	4 in	4 in	4 in	4 in
Loop Label Placement at Sideseam	Bottom edge to bottom of loop label, at the WL side seam	false	Full	1/8 in	7 in	7 in	7 in	7 in	7 in	7 in

Measured Size: M

POINT OF MEASURE	HOW TO MEASURE	CRITICAL	TYPE	TOLERANCE	EXPECTED	PPS - RCVD	VARIANCE	ADJUST BY +/-	REVISED SPEC	MEASUREMENT NOTES
Front Body Length	HPS to bottom edge	true	Full	1/2 in	27 in	27 in	0 in	0 in	27 in	
Back Body Length	CB neck seam to bottom edge	true	Full	1/2 in	26 in	25 3/4 in	-1/4 in	0 in	26 in	
Shoulder Seam Forward	HPS to seam	false	Full	1/8 in	1/2 in	1/2 in	0 in	0 in	1/2 in	
Shoulder Slope	Shoulder point perpendicular to HPS	false	Full	1/4 in	2 in	2 in	0 in	0 in	2 in	
Front Neck Drop	HPS to neck seam	false	Full	1/8 in	4 1/4 in	4 1/4 in	0 in	0 in	4 1/4 in	
Back Neck Drop	HPS to neck seam	false	Full	1/8 in	1 in	1 1/8 in	1/8 in	0 in	1 in	
Back Neck Width	Seam to seam at back neck, at HPS point	false	Full	1/4 in	7 3/4 in	7 1/4 in	-1/2 in	0 in	7 3/4 in	back to spec
Neck Trim Height	Neck Seam to trim edge	false	Full	1/8 in	13/16 in	13/16 in	0 in	0 in	13/16 in	
Minimum Neck Stretch		true	Half	0 in	11 1/2 in	11 1/2 in	0 in	0 in	11 1/2 in	
Across Shoulder	Seam to seam	false	Half	1/4 in	21 in	21 in	0 in	0 in	21 in	
Across Front/Across Back Position from HPS		true	Full	0 in	7 in	7 in	0 in	0 in	7 in	
Across Front	Down from HPS, Seam to seam	false	Half	1/4 in	20 in	20 in	0 in	0 in	20 in	
Across Back	Down from HPS, Seam to Seam	false	Half	1/4 in	20 in	19 3/4 in	-1/4 in	0 in	20 in	
Chest Width	1" Below armhole- edge to edge	true	Half	1/4 in	22 1/2 in	22 1/2 in	0 in	0 in	22 1/2 in	
Bottom Opening Width- At Edge	At bottom edge	true	Half	1/4 in	22 1/2 in	22 1/2 in	0 in	0 in	22 1/2 in	
Bottom Hem Height	Bottom edge to stitch line or trim seam	false	Full	1/8 in	1 in	1 in	0 in	0 in	1 in	
Sleeve Length from CB Neck	3-point measure from CB Neck to shoulder point to sleeve edge	true	Full	3/8 in	19 1/4 in	19 1/4 in	0 in	0 in	19 1/4 in	
Armhole Drop	Below HPS - measure perpendicular	false	Full	1/4 in	11 1/2 in	11 5/8 in	1/8 in	0 in	11 1/2 in	
Bicep Width	1" below armhole- edge to edge	false	Half	1/4 in	8 7/8 in	8 7/8 in	0 in	0 in	8 7/8 in	
Sleeve Opening Width- At Edge	At edge	false	Half	1/4 in	8 in	8 in	0 in	0 in	8 in	
Sleeve Hem Height	Edge to seam- trim width	false	Full	1/8 in	1 in	1 in	0 in	0 in	1 in	
WL Artwork Placement from HPS to Top Edge		true	Full	1/8 in	7 3/4 in	8 in	1/4 in	1/4 in	8 in	keep as sample
WL Artwork Placement Out from CF Line		false	Full	1/8 in	2 1/4 in	2 in	-1/4 in	1/8 in	2 3/8 in	follow revised
CB Artwork Placement below CB Neck Seam	From CB Neck Seam to Top Edge of Artwork	false	Full	1/8 in	4 in	4 in	0 in	0 in	4 in	
Loop Label Placement at Sideseam	Bottom edge to bottom of loop label, at the WL side seam	false	Full	1/8 in	7 in	7 in	0 in	0 in	7 in	

PPS - Sarah Tota

CREATED ON SEP 30, 2025 9:13 PM
PPS: SIZE:M, CREATED AT: 09-29-2025

SS26CT096 SS Technics Tee
FITTING DATE: 09/30/2025
MODEL/ATTENDEES: Anthony, Cal, Anastasiya, Sarah, Hyeyoung, Jeni, Wes
STATUS: Approved to TOP

Fit Comments:

- 1. Back neck width came in -1/2", go back to spec
- 2. Keep measurement as sample for WL artwork placement from HPS of 8"
- 3. Increase WL artwork placement from CF to 2 3/8"

- 1. Rộng cổ sau bị nhỏ hơn 1/2" (-1/2"), vui lòng đưa về đúng tiêu chuẩn.
- 2. Giữ nguyên số đo vị trí hình in ngực trái từ đỉnh vải theo mẫu là 8".
- 3. Tăng vị trí hình in ngực trái từ đường giữa thân trước lên 2 3/8".

Construction/Artwork Comments:

- 1. Remove side slits
- 1. Loại bỏ xẻ tà bên hông.



Untitled-94-0.jpg